



Autogenerering af hydrostratigrafiske modeller fra boreriger og SkyTEM

Marker, Pernille Aabye; Bauer-Gottwein, Peter; Foged, Nikolaj; Vest Christiansen, Anders; Auken, Esben; Mosegaard, Klaus; He, Xin; Refsgaard, Jens Christian

Publication date:
2015

Document Version
Peer reviewed version

[Link back to DTU Orbit](#)

Citation (APA):

Marker, P. A. (Author), Bauer-Gottwein, P. (Author), Foged, N. (Author), Vest Christiansen, A. (Author), Auken, E. (Author), Mosegaard, K. (Author), He, X. (Author), & Refsgaard, J. C. (Author). (2015). Autogenerering af hydrostratigrafiske modeller fra boreriger og SkyTEM. Sound/Visual production (digital)

General rights

Copyright and moral rights for the publications made accessible in the public portal are retained by the authors and/or other copyright owners and it is a condition of accessing publications that users recognise and abide by the legal requirements associated with these rights.

- Users may download and print one copy of any publication from the public portal for the purpose of private study or research.
- You may not further distribute the material or use it for any profit-making activity or commercial gain
- You may freely distribute the URL identifying the publication in the public portal

If you believe that this document breaches copyright please contact us providing details, and we will remove access to the work immediately and investigate your claim.

Autogenerering af hydrostratigrafiske modeller fra boringer og SkyTEM

Pernille Aabye Marker (paam@env.dtu.dk)

Peter Bauer-Gottwein

Department of Environmental Engineering, Technical University of Denmark

Nikolaj Foged, Anders Vest Christiansen, Esben Auken

HydroGeophysics Group, Department of Geoscience, Aarhus University, Denmark

Klaus Mosegaard

Niels Bohr Institute, University of Copenhagen, Denmark

Xin He, Jens Christian Refsgaard

Geological survey of Denmark and Greenland, Denmark

HydroGeophysics Group
AARHUS UNIVERSITY



Niels Bohr Institutet



GEUS

DTU Environment

Department of Environmental Engineering

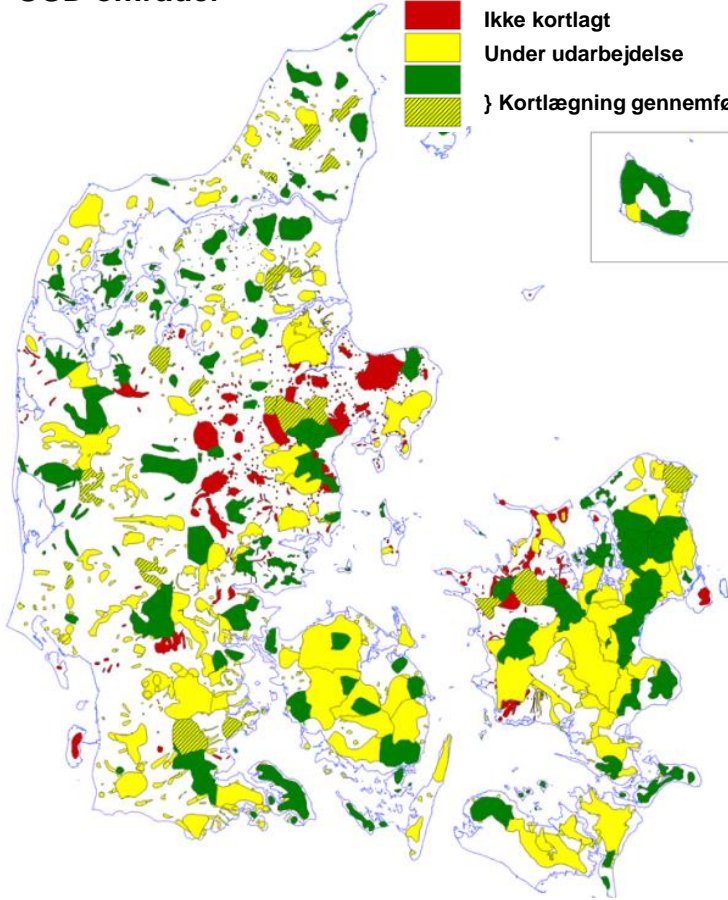


EM data og grundvandsmodeller

OSD områder

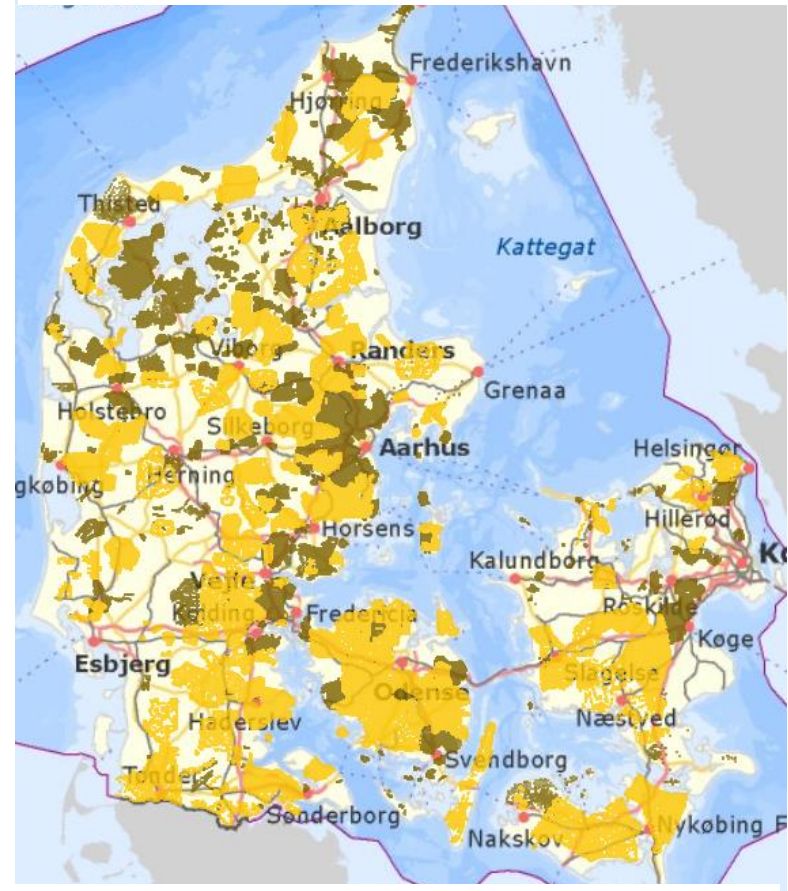
2011 status

- Ikke kortlagt
- Under udarbejdelse
- Kortlægning gennemført
- Kortlægning gennemført



<http://gk.geus.info/xpdf/20110624-faglige-resultater-2010-med-omslag-endelig.pdf>

TEM og SkyTEM sonderinger, GERDA 04 November 2014



Brun er TEM, gul er SkyTEM

Motivation

- **Forvaltning af grundvandsressourcer**
 - Grundvandsudnyttelse
 - Forurening
 - Indvindingsoplande

- **Strukturel geologisk usikkerhed** er den dominerende usikkerhedskilde i grundvandsmodellering

- **Prædiktioner** fra grundvandsmodeller er følsomme overfor ændringer i den hydrostratigrafiske model

- Grundvandsmodeller er **non-unique'e** i forhold til hydrostratigrafien

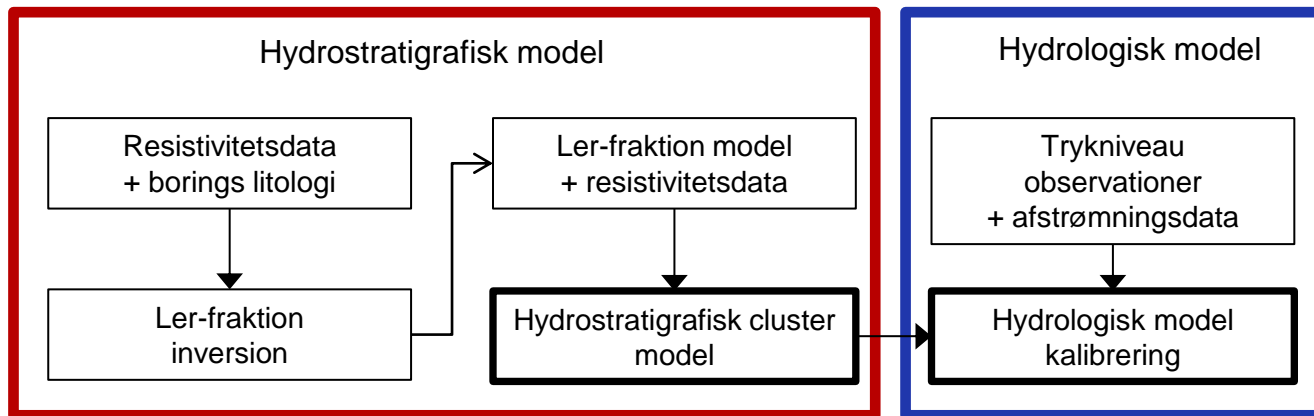
Metode

Geofysisk og lithologisk data  **struktur**

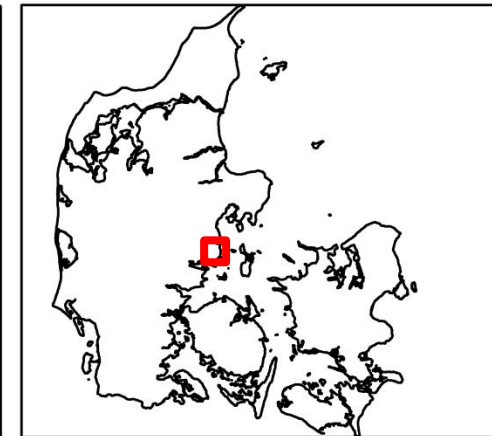
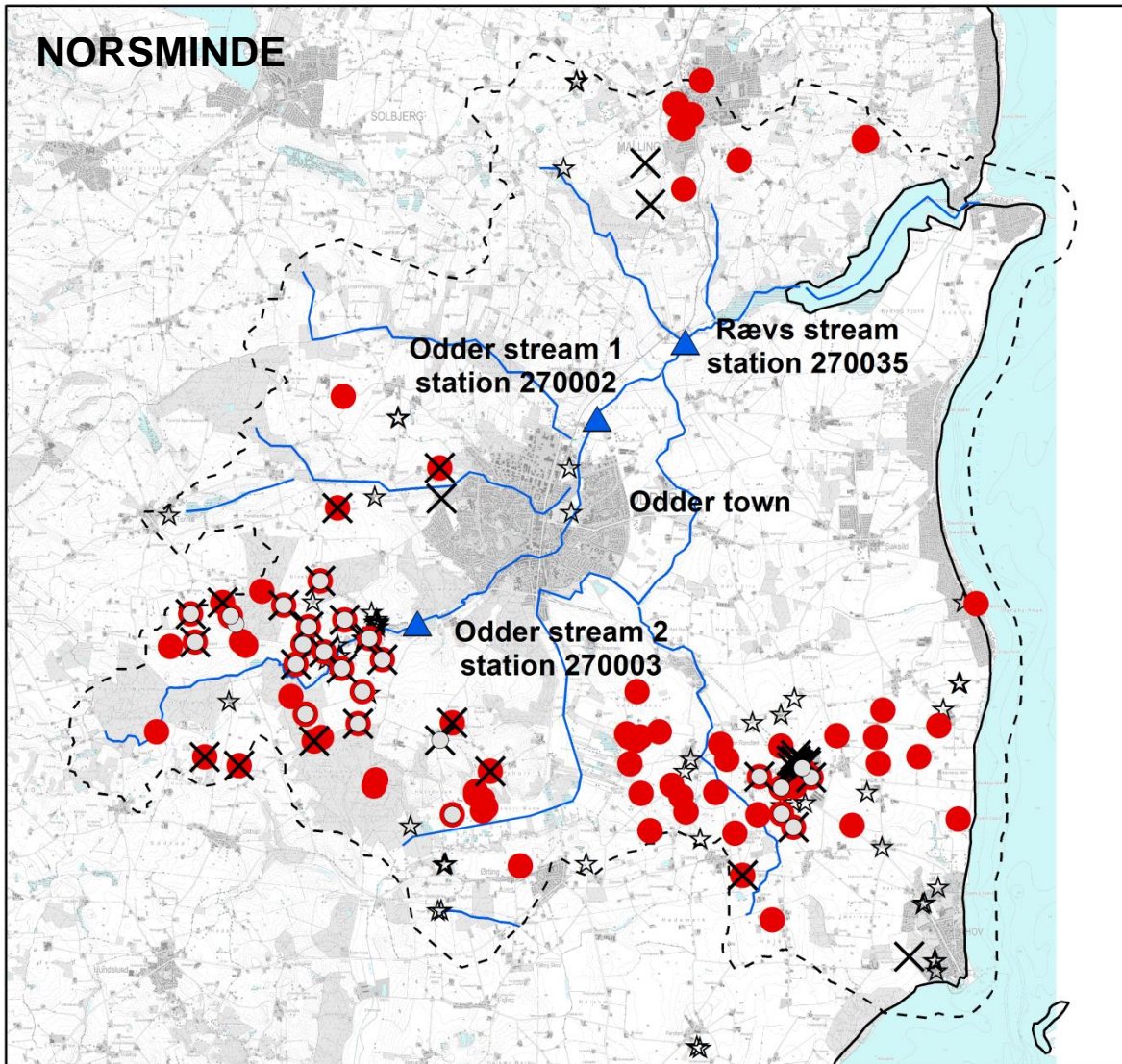
- Ler-fraktion inversion
- Cluster analyse

Hydrologisk data  **hydrauliske parametre**

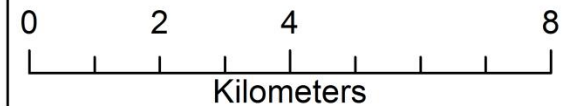
- Hydrologisk model kalibrering





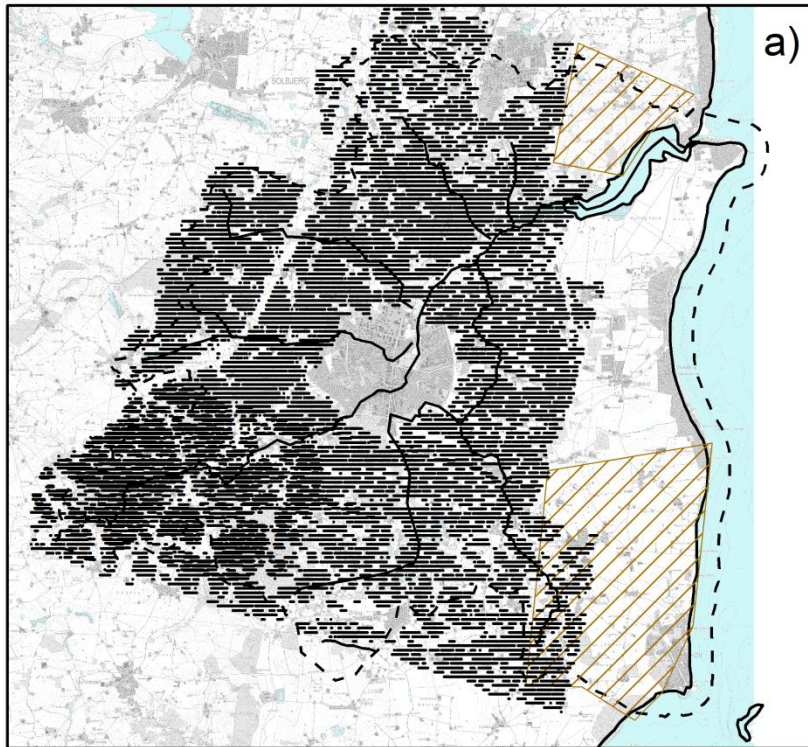


- Head observation 1995-1999
- ✕ Head observation 2008-2011
- Head observation 2000-2003
- ▲ Gauging station
- ☆ Abstraction well
- Stream
- - - Hydrological model domain

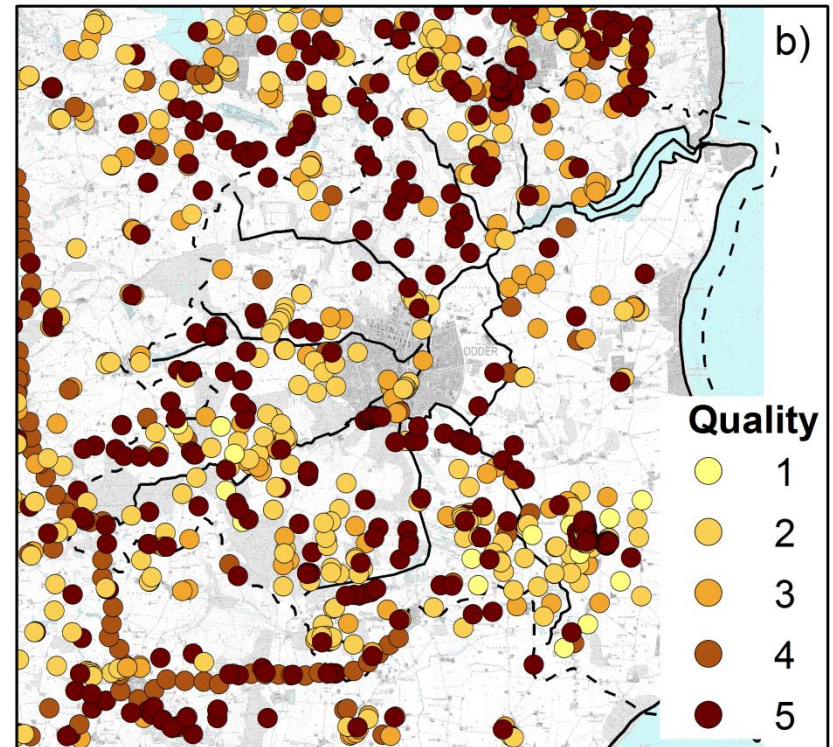


TEM (skraveret brun) og
SkyTEM (sorte punkter)

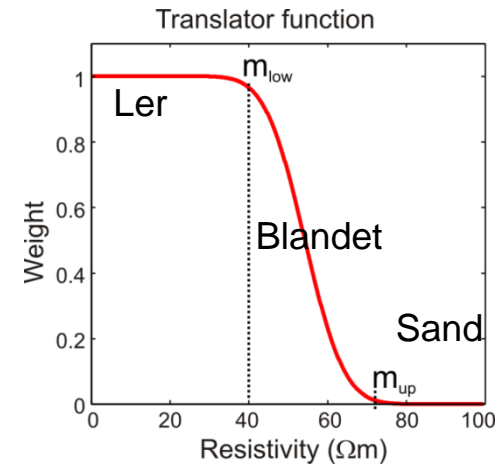
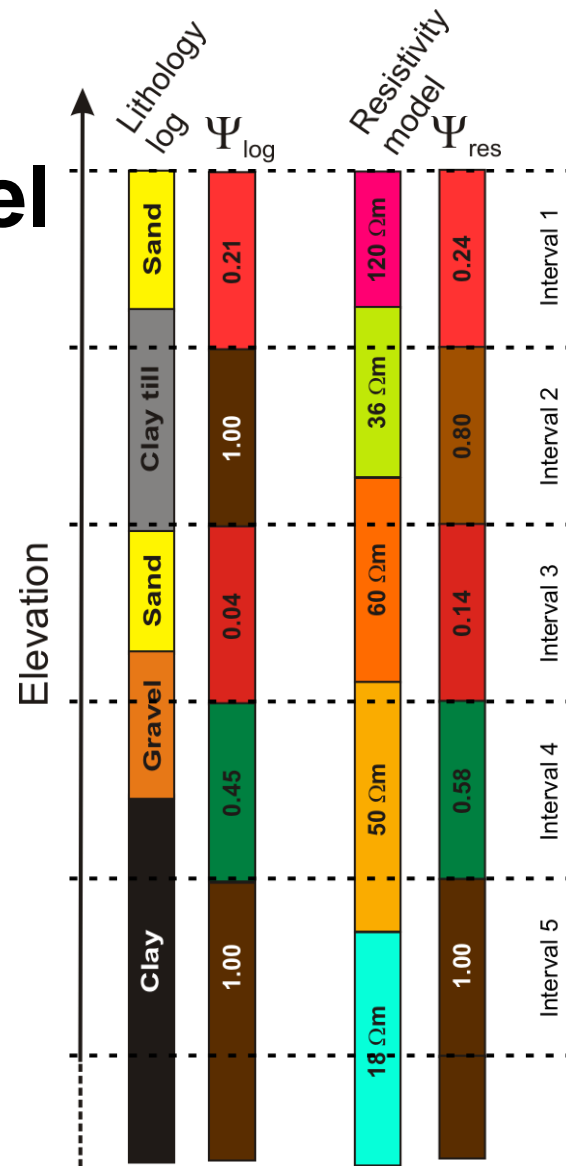
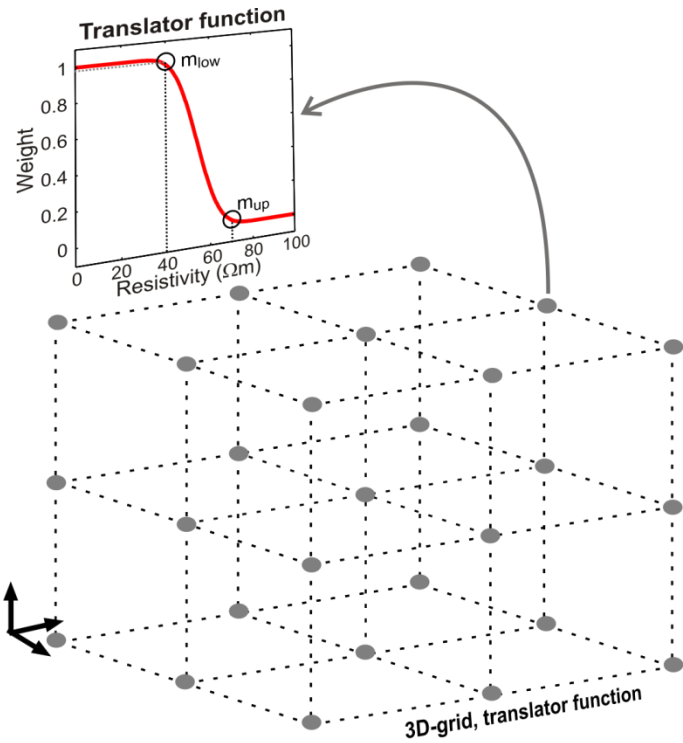
0 2.5 5 10 Kilometers

Litologiske boringer

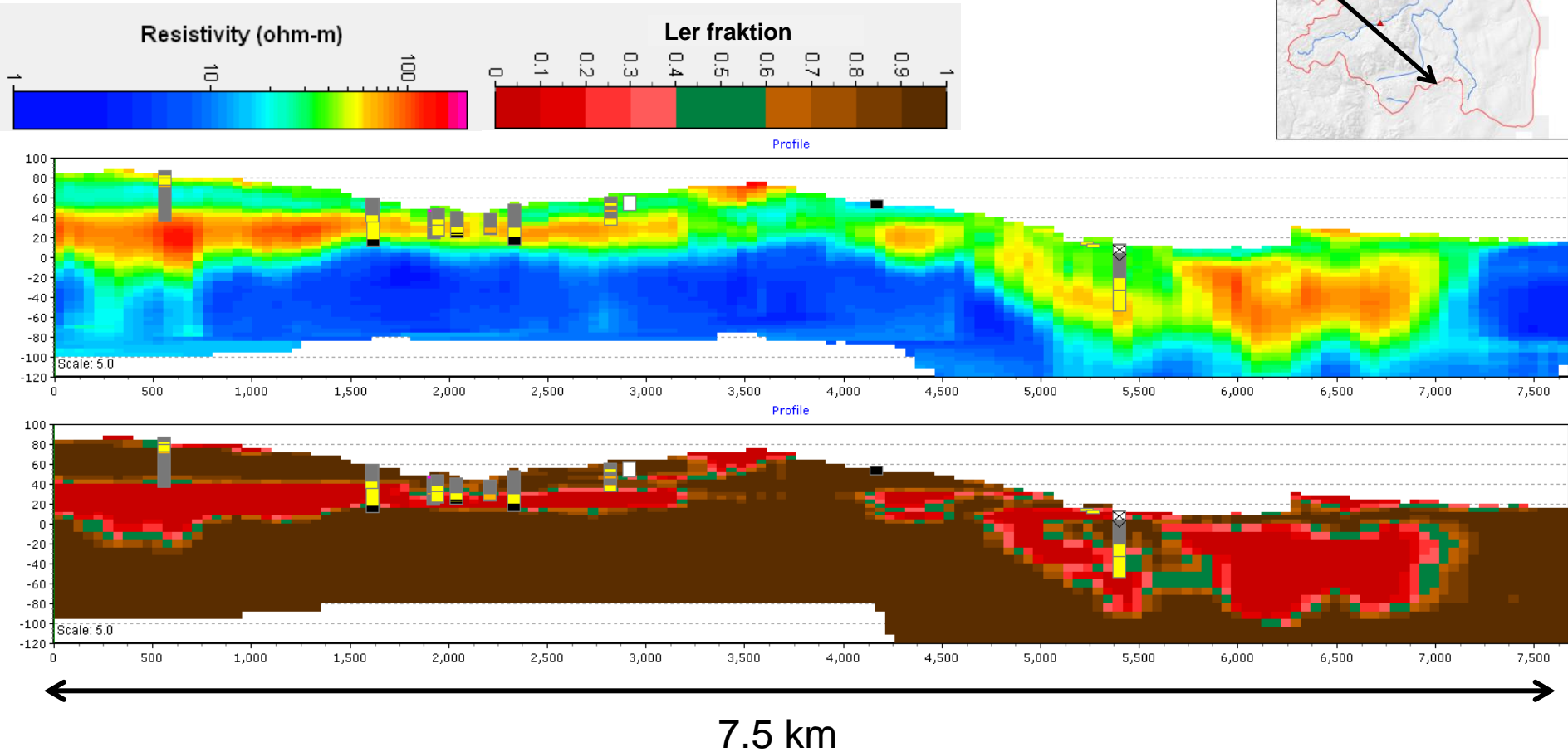
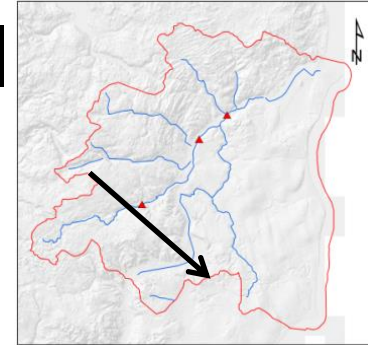


Ler-fraction model

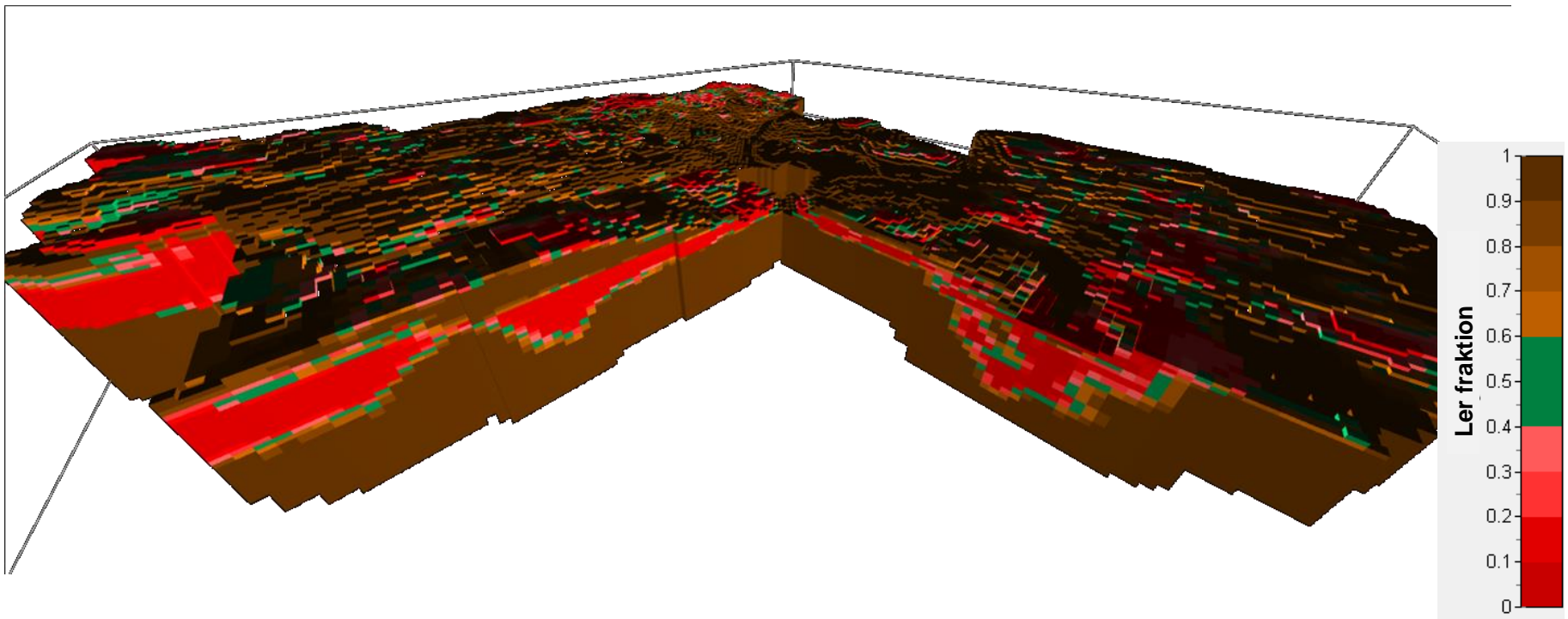


Foged, N., Marker, P. A., Christansen, A. V., Bauer-Gottwein, P., Jørgensen, F., Høyer, A.-S., and Auken, E.: Large-scale 3-D modeling by integration of resistivity models and borehole data through inversion, *Hydrol. Earth Syst. Sci.*, 18, 4349-4362, doi:10.5194/hess-18-4349-2014, 2014.

Resistivitets- og ler-fraktion model

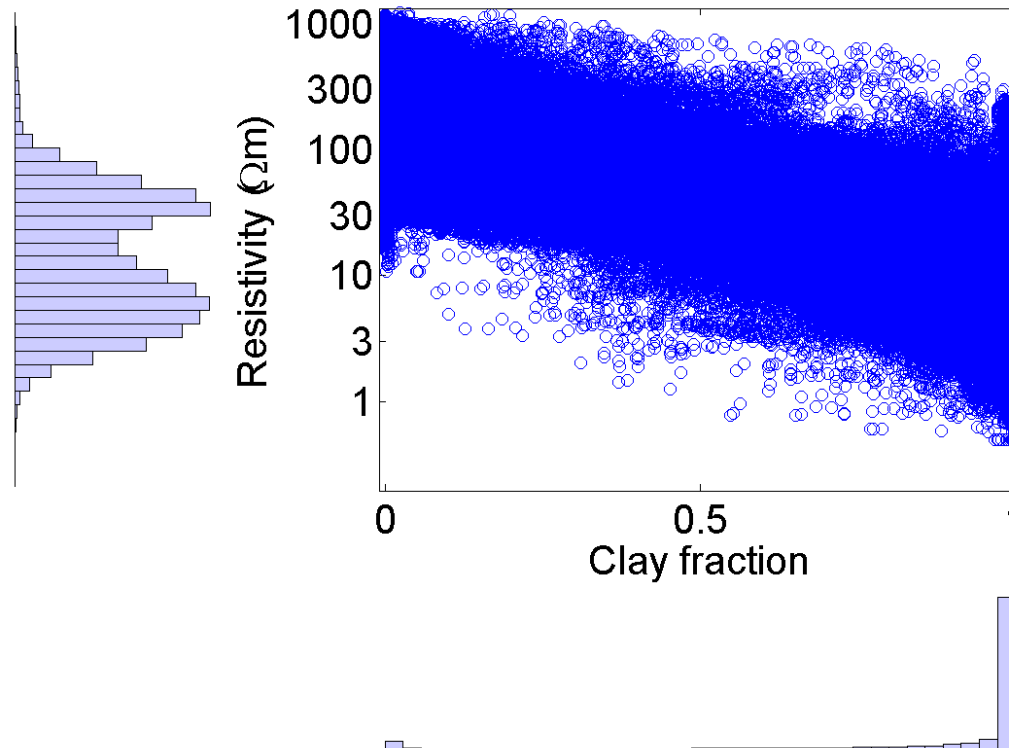


3D ler-fraktion model

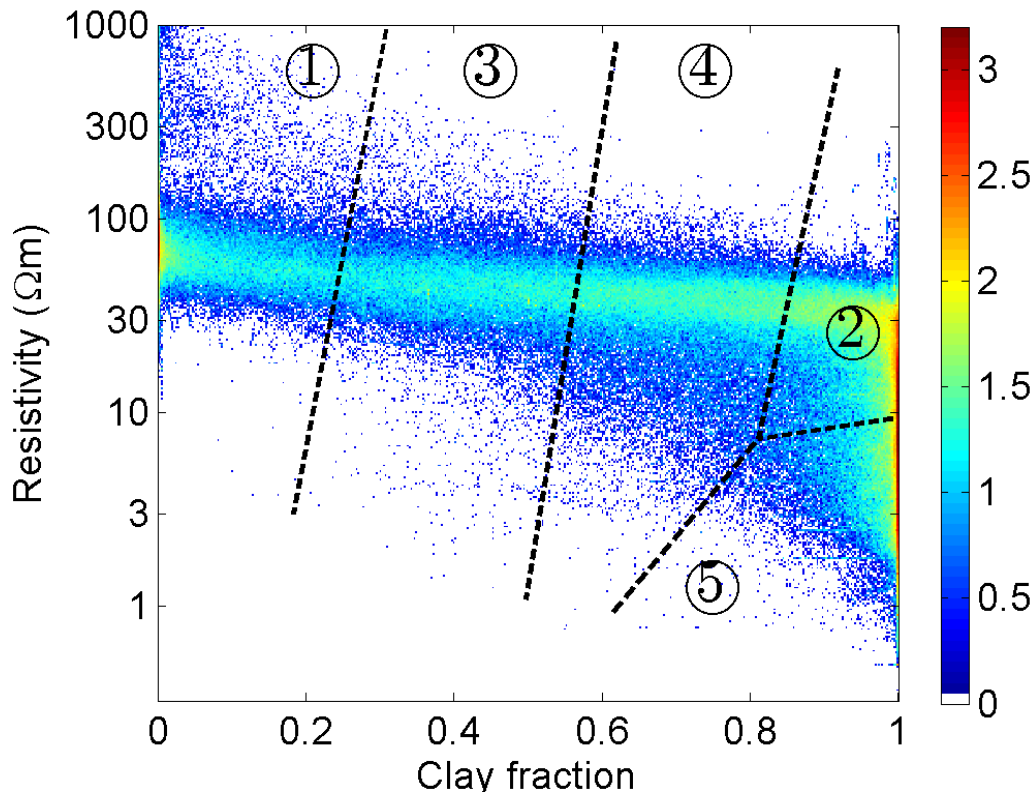


K-means cluster analyse

- Inddeling af undergrunden i zoner
- Information i resistivitetsdata og ler-fraktion værdier

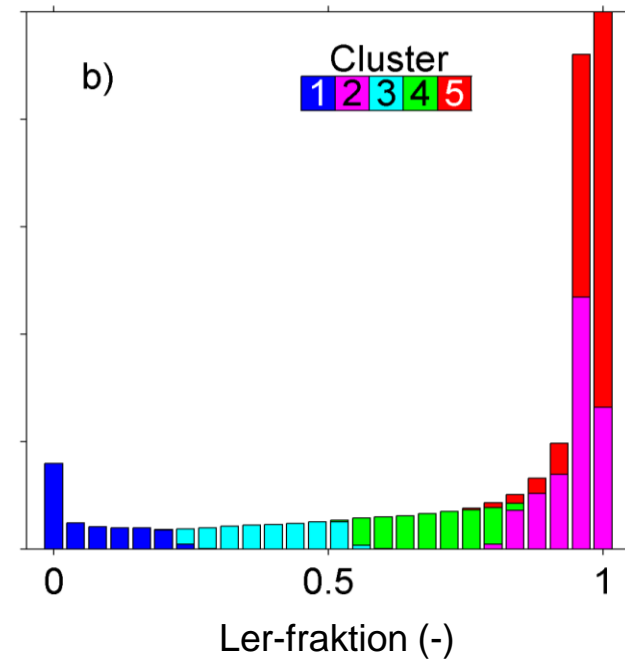
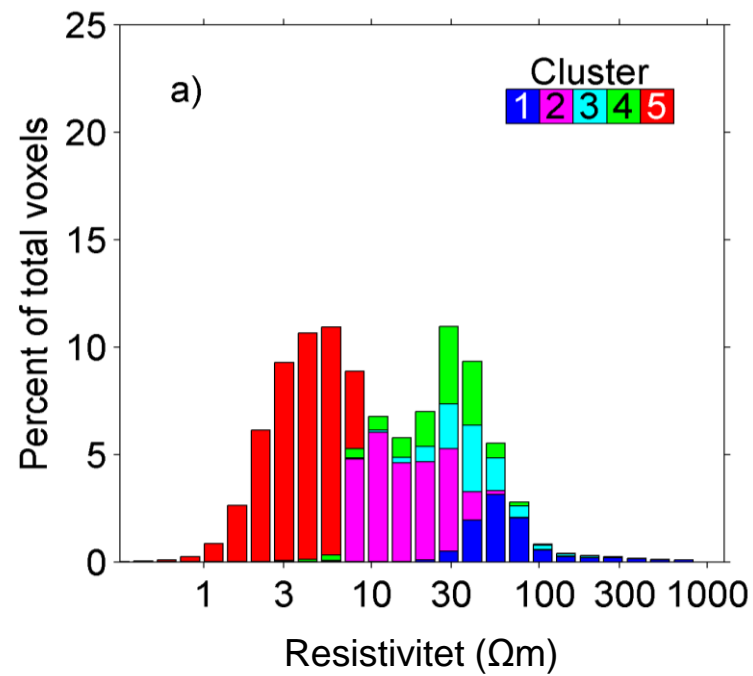


Inddeling af datarum

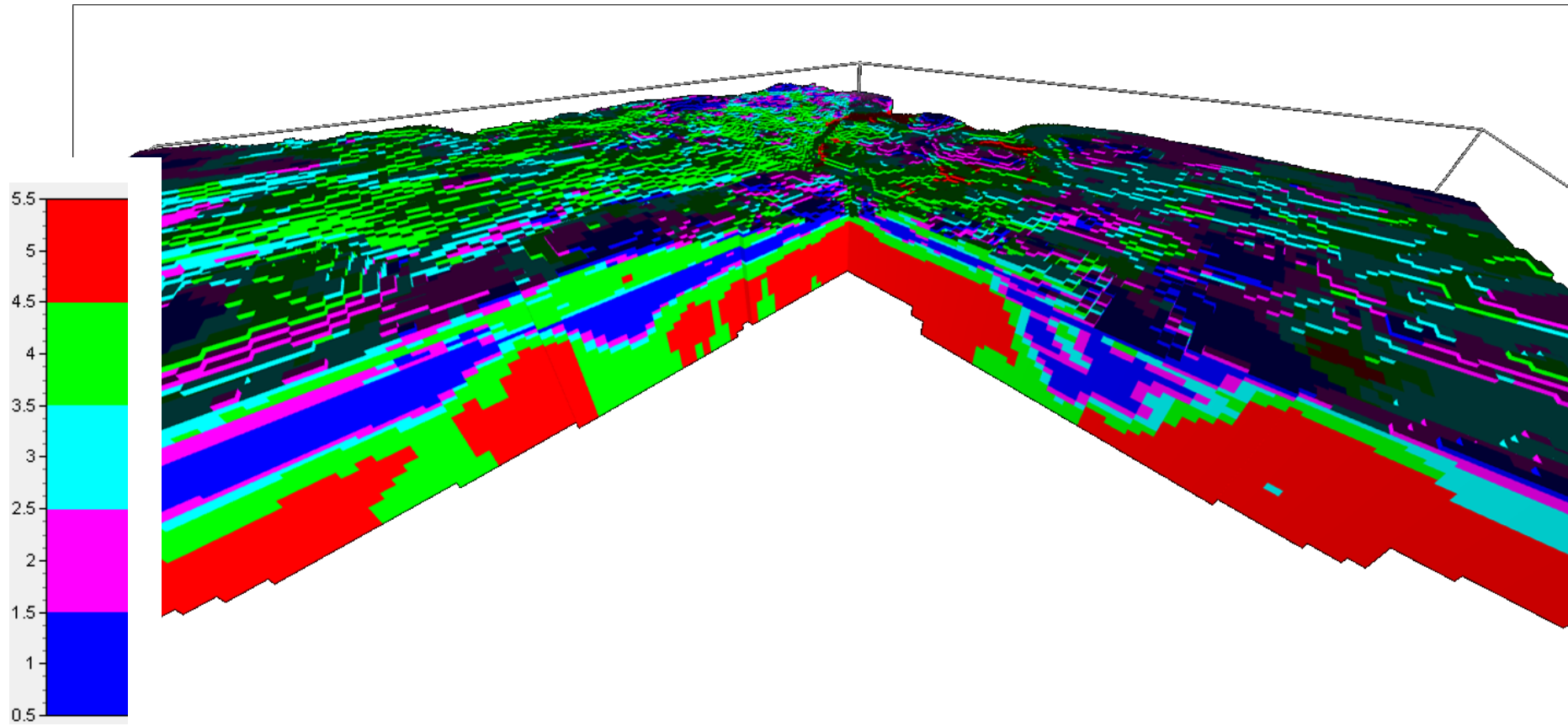


Farveskala angiver antal datapunkter (logaritmisk)

Cluster-model



3D cluster-model



Integreret hydrologisk model

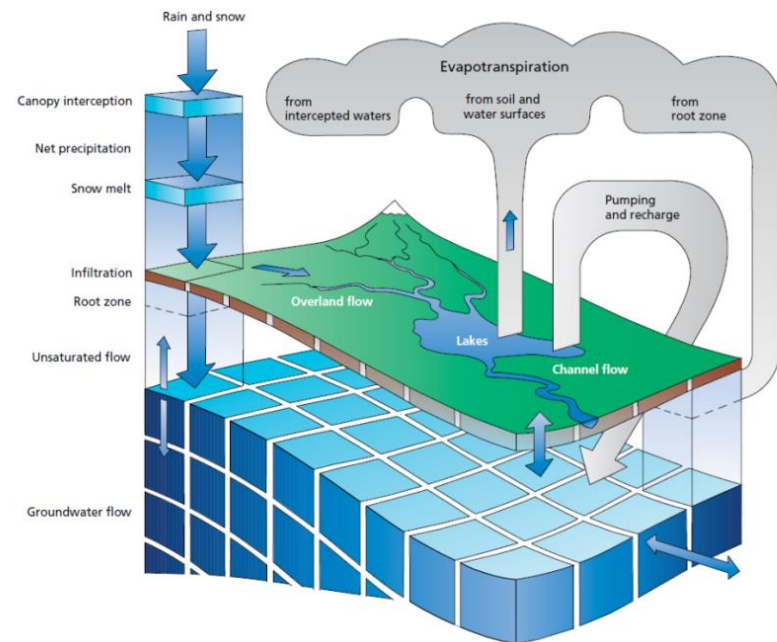
MIKE-SHE model

Hydrologisk forcing

- Daglig klima data
- Grundvandsindvinding

Observationer

- Trykniveau
- Vandføringer



Kalibrering af hydrologisk model

$$\Phi = \Phi_{head} + \Phi_{discharge} = w_{H,i} \sum_{i=1}^{N_H} \left(\frac{obsH_i - simH_i}{\sigma_H} \right)^2 + w_{D,i} \sum_{i=1}^{N_D} \left(\frac{obsD_i - simD_i}{\sigma_{D,i}} \right)^2$$

σ_H	std dev trykniveau
$\sigma_{D,i}$	std dev vandføring
$w_{H,i}$	subjektiv vægt, trykniveau
$w_{D,i}$	subjektiv vægt, vandføring
N_H	antal trykniveau observationer
N_D	antal vandføring observationer
obs	observeret
sim	simuleret

Performance kriterier

$$\text{RMSE} = \sqrt{\frac{1}{N} \sum_{i=1}^N (\text{obs}_i - \text{sim}_i)^2}$$

Spredningen på residualerne

$$\text{RMSE}_w = \sqrt{\frac{1}{N} \sum_{i=1}^N \left(\frac{\text{obs}_i - \text{sim}_i}{\sigma_i} \right)^2}$$

Vægtet RMSE; hvis = 1 er data fitted til én standardafvigelse

$$\text{ME} = \frac{1}{N} \sum_{i=1}^N (\text{obs}_i - \text{sim}_i)$$

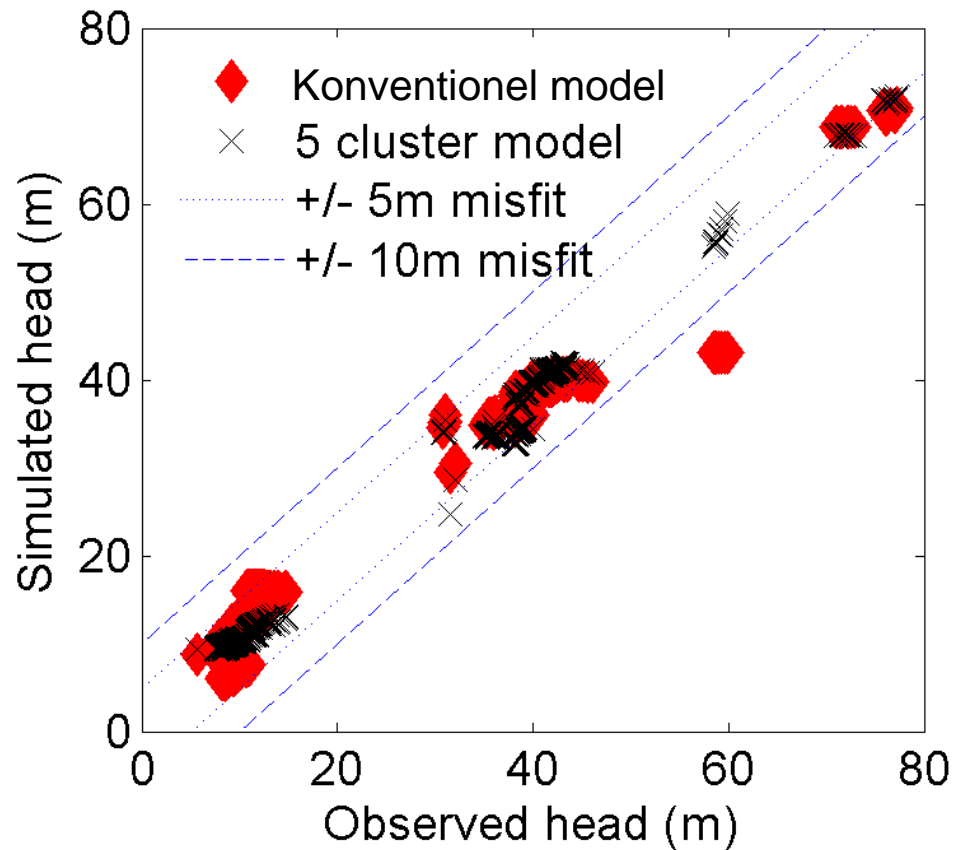
Middelfejl; mål for bias

Benchmarking

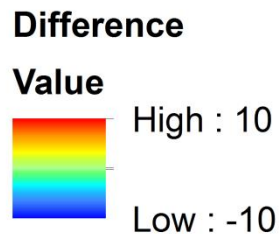
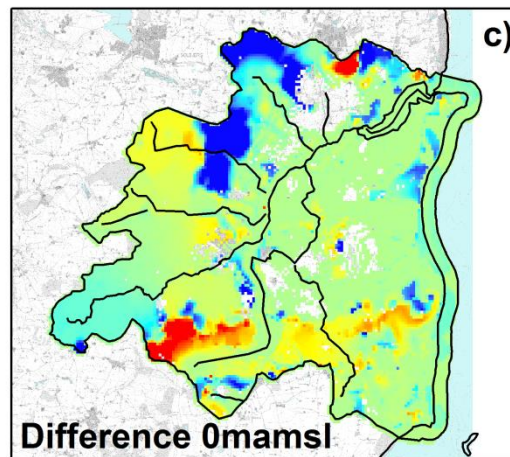
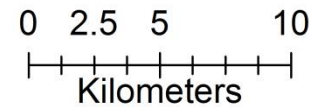
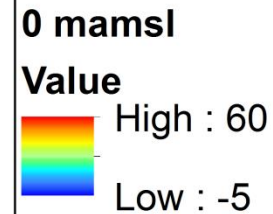
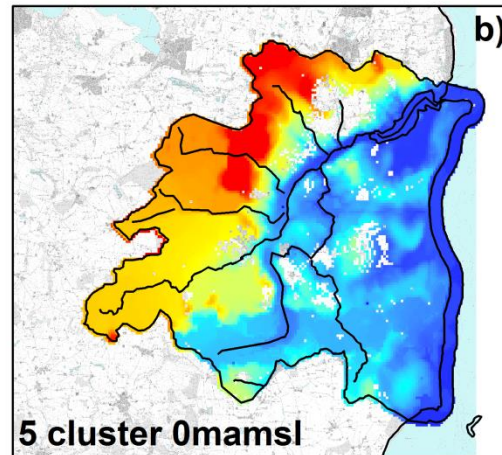
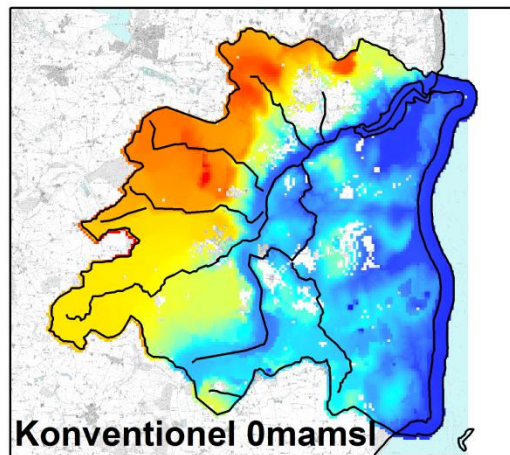
- 5-cluster model performance sammenlignet med konventionel hydrostratigrafisk model

		Konventionel model			5-cluster model		
		Weighted RMSE (-)	RMSE	ME	Weighted RMSE (-)	RMSE	ME
Calibration 2000-2003	Head (m)	2.81	3.27	-0.0762	2.14	2.57	0.00310
	Discharge (m ³ /s)	0.326	0.267	-0.0259	0.338	0.278	-0.0107
Validation 1995-1999	Head (m)	2.85	3.24	-0.926	1.76	2.19	-1.01
	Discharge (m ³ /s)	0.446	0.180	-0.0501	0.524	0.203	-0.0354
Validation 2008-2011	Head (m)	3.27	3.97	-0.899	2.64	3.34	-1.28
	Discharge (m ³ /s)	0.501	0.124	-0.0853	0.526	0.120	-0.0809

Simuleret trykniveau, 1995-1999

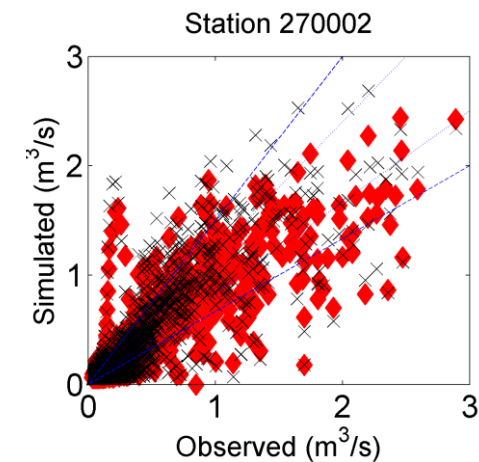
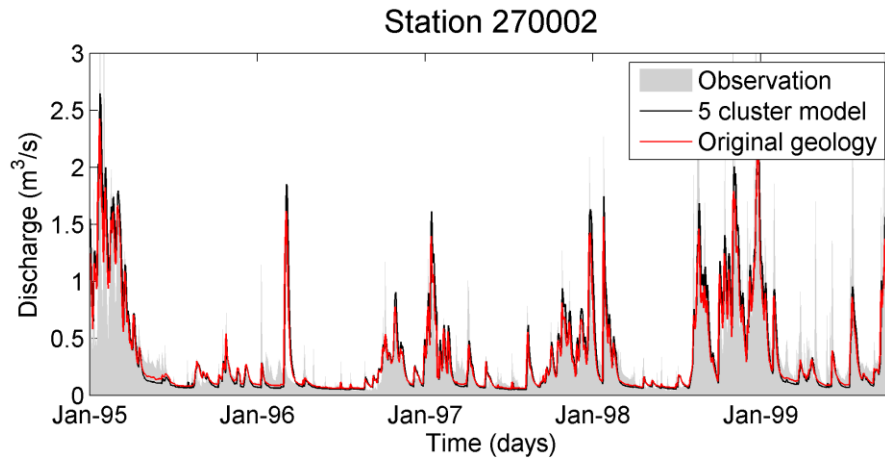
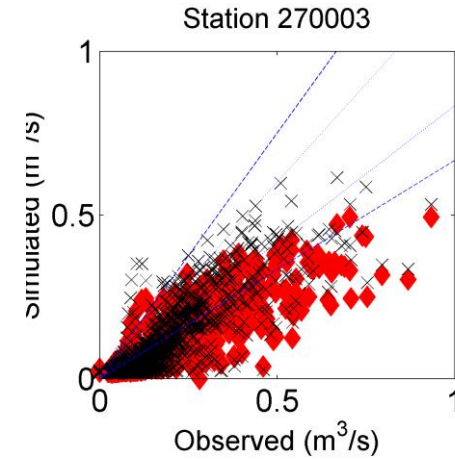
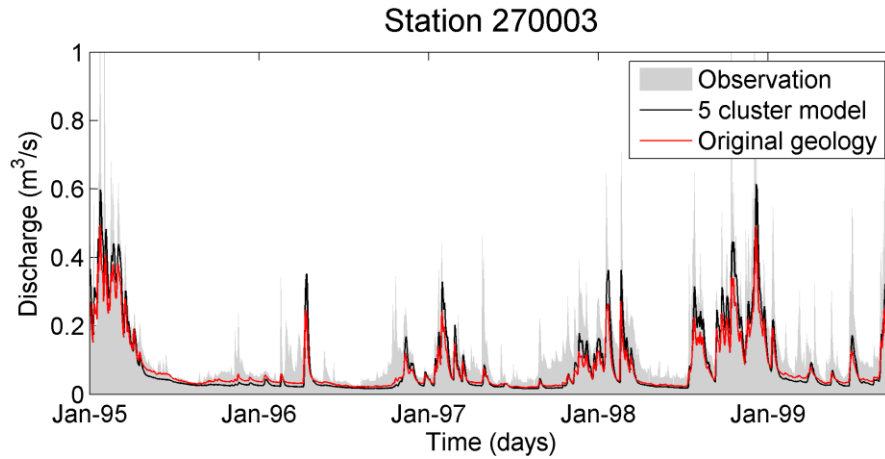
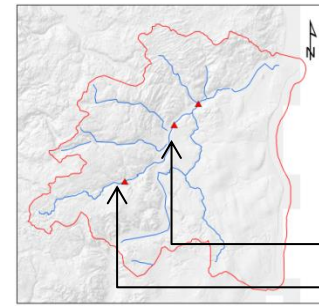


Simuleret trykniveau, kote 0m

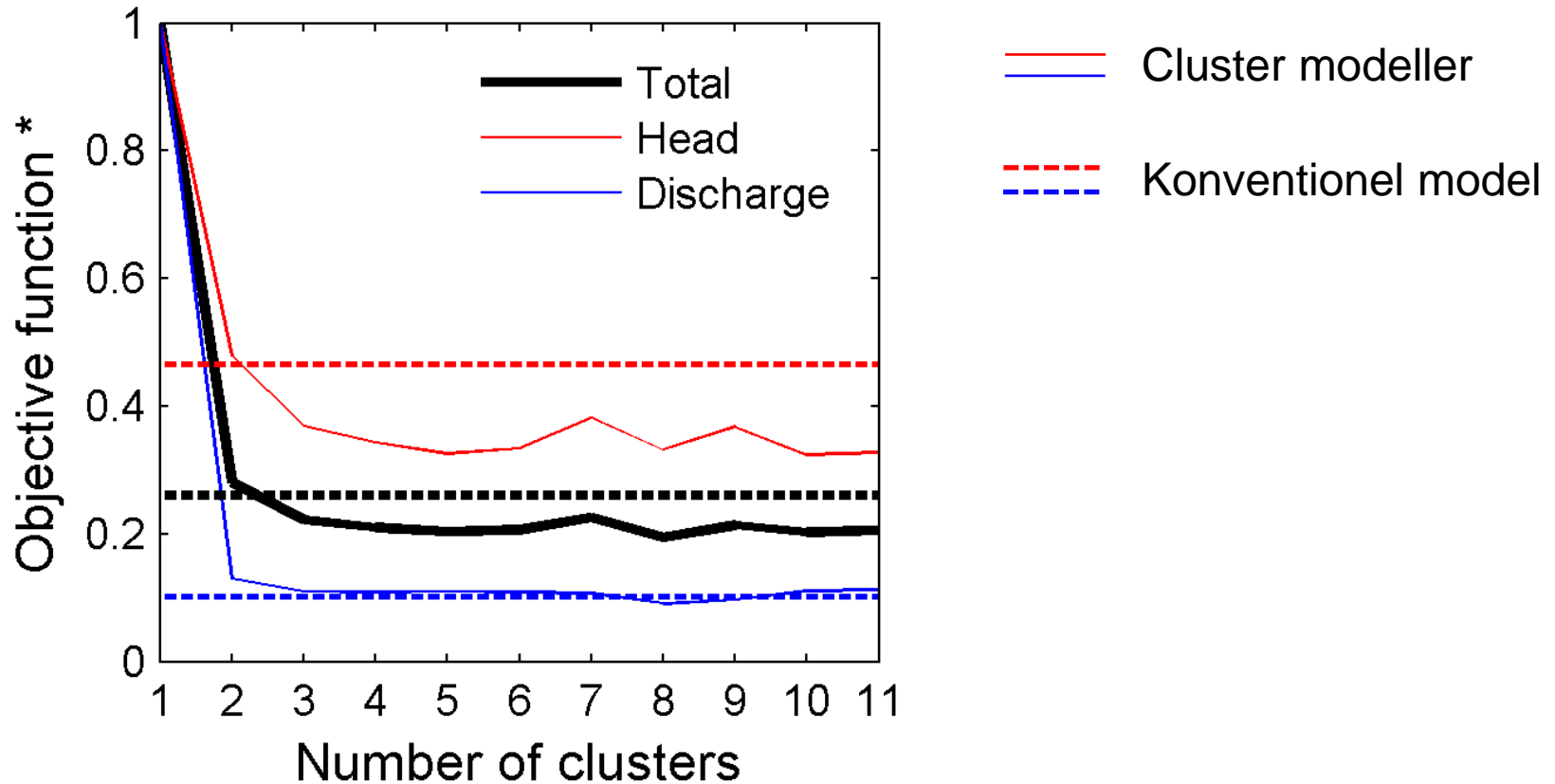


Forskellen på simuleret trykniveau fra de to modeller

Afstrømningsdata 1995-1999



Hvor mange zoner?



Konklusion

- Vi kan ud fra geofysisk resistivitetsdata og ler-fraktion model inddele undergrunden i zoner, hvis hydrauliske ledningsevne kan estimeres i hydrologisk kalibrering
 - Resultat sammenligneligt med konventionel hydrostratigrafisk model
- Semi-automatisk og drevet af data → mindre ressourcekrævende
- Udnyttelse af rumlig information i geofysikken
- Mulighed for metodestandardisering i hydrostratigrafisk modelopbygning

Fortsættelse

- Usikkerhedsanalyse ved generering af ensemble