



Gravity changes in mid-west Greenland from GOCE gravity model and gradient data using ground and airborne gravity

Tscherning, Carl Christian; Herceg, Matija; Fredenslund Levinsen, Joanna

Publication date:
2014

Document Version
Peer reviewed version

[Link back to DTU Orbit](#)

Citation (APA):

Tscherning, C. C., Herceg, M., & Fredenslund Levinsen, J. (2014). *Gravity changes in mid-west Greenland from GOCE gravity model and gradient data using ground and airborne gravity*. Poster session presented at European Geosciences Union General Assembly 2014, Vienna, Austria.

General rights

Copyright and moral rights for the publications made accessible in the public portal are retained by the authors and/or other copyright owners and it is a condition of accessing publications that users recognise and abide by the legal requirements associated with these rights.

- Users may download and print one copy of any publication from the public portal for the purpose of private study or research.
- You may not further distribute the material or use it for any profit-making activity or commercial gain
- You may freely distribute the URL identifying the publication in the public portal

If you believe that this document breaches copyright please contact us providing details, and we will remove access to the work immediately and investigate your claim.

Gravity changes in mid-west Greenland from GOCE gravity model and gradient data using ground and airborne gravity

Carl Christian Tscherning¹, Matija Herceg², Joanna Fredenslund Levinsen³

(1) University of Copenhagen, Niels Bohr Institute, Denmark, (2) University of Copenhagen, IGN, Denmark, (3) DTU Space, Denmark

Introduction

GOCE TRF (terrestrial reference frame) vertical anomalous gradients (Tzz) from two periods have been used to determine gravity anomalies changes in mid-west Greenland, where a large mass-loss has been detected using GRACE (Fig. 1). As additional data were used the GOCE DIR-3 model and ground gravity at the coast on solid rock, where no mass loss is expected.

The methods of Least-Squares Collocation (LSC) and the Reduced Point Mass (RPM) methods have been used, however only LSC included the ground data.

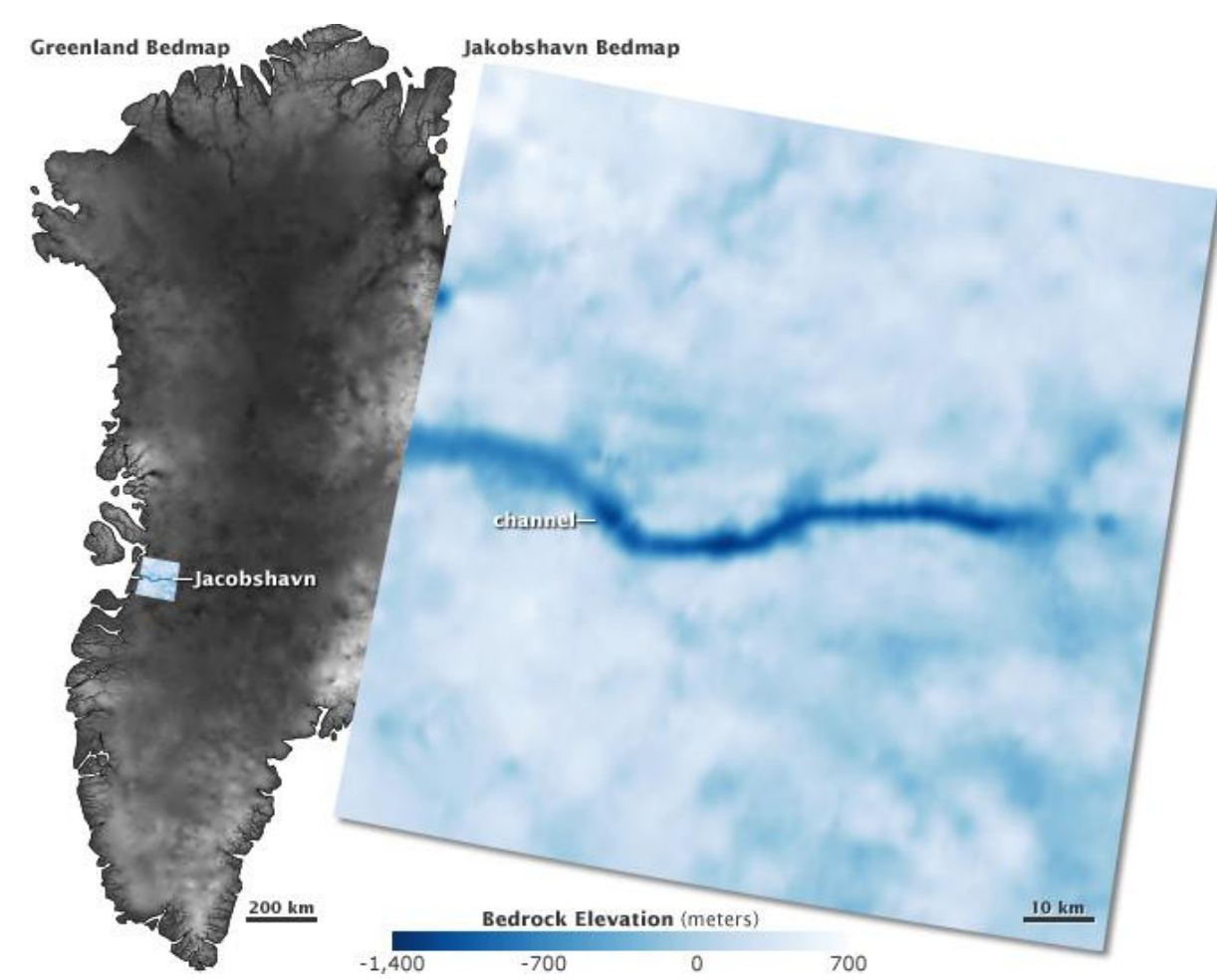


Figure 1: Greenland and Jakobshavn Isbrae bedmap elevations. Figure credit: NASA Earth Observatory

Data used

In this study, we have used GOCE Tzz gravity gradient component data from two periods (from October 2010 to September 2011, and from October 2011 to September 2012) to predict gravity anomaly.

The GOCE DIR-3 [Brusima et al., 2010] model was also used in the remove-restore procedure, where the contribution from the DIR-3 model up to sph. harm. d/o 120 has been subtracted and later added back to the calculated gravity anomalies and GOCE gravity gradients.

In order to enhance the calculation of gravity anomalies, ground gravity from Western-Greenland [Kejlsø, 1958; Svejgaard 1959] was used. The data have been measured at sites (solid rock), where we do not expect any gravity change due to the mass changes (see Fig. 4).

Furthermore data from the airborne gravity survey project (GAP) 1991-1992 [Brozena et al., 1992] was compared to the DIR-3 model.

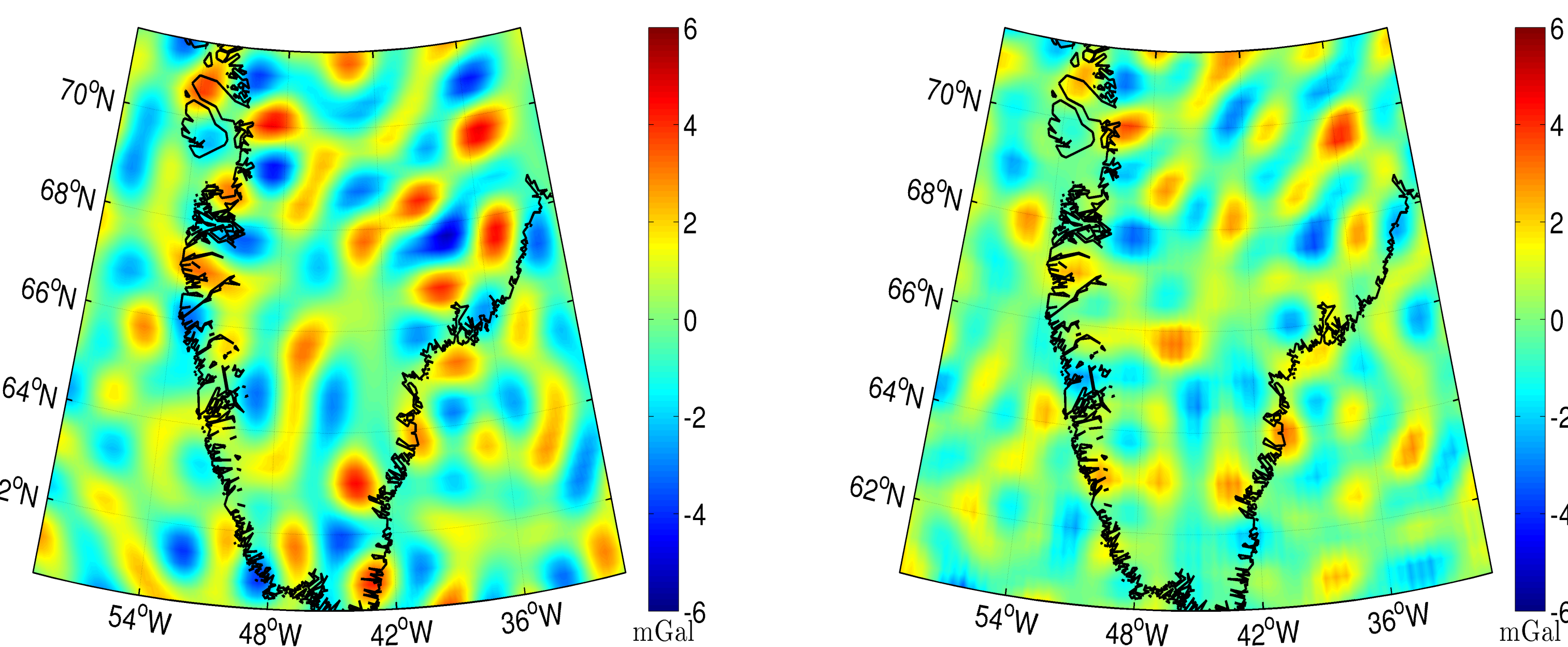


Figure 2: Comparison of predicted gravity anomaly found using LSC (left) and the RPM (right) respectively. The observation period is from 2011 to 2012.

Calculations

Using the gravity gradients, gravity anomalies have been computed at height of 2km from each of the two data sets using either LSC or RPM. The two methods give nearly identical results if only gradients are used (see Fig. 2). But the estimated error (from LSC) is between 12 and 15 mgal. This is much larger than the gravity change expected using the known mass-loss at the Jakobshavn Isbrae [Levinsen et al., 2013], which is approximately 2 mgal (corresponds to the ice height change of 50 m) for the period 04.08.2007 to 02.08.2008 (Fig 3.), and yearly trend is shown on figure 5..)

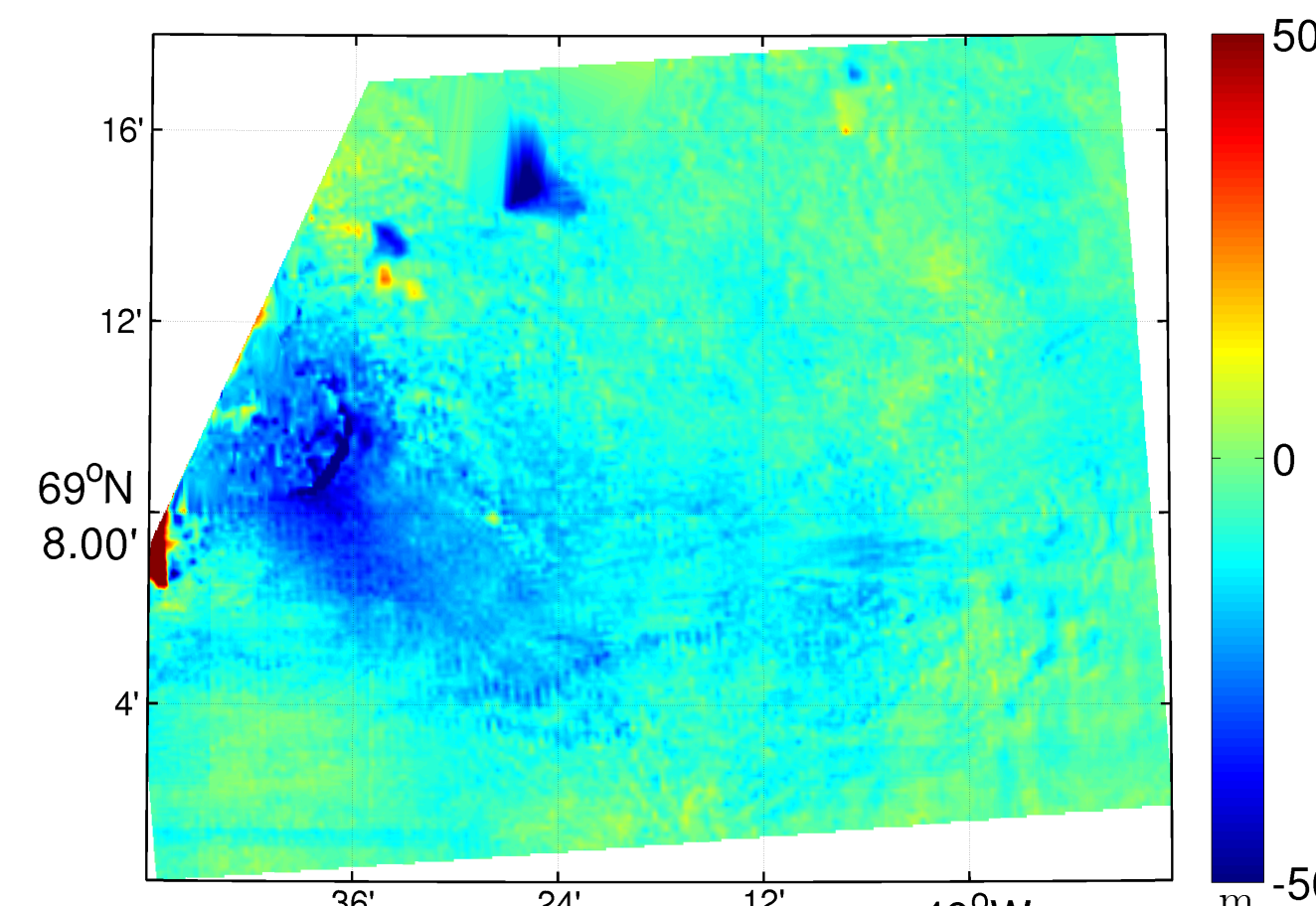


Figure 3: Surface elevation changes over Jakobshavn Isbrae drainage basin. Obtained by co-registering stereoscopic imagery from SPOT-5 to laser scanner. The observation period is from 04.08.2007 to 02.08.2008.

Results

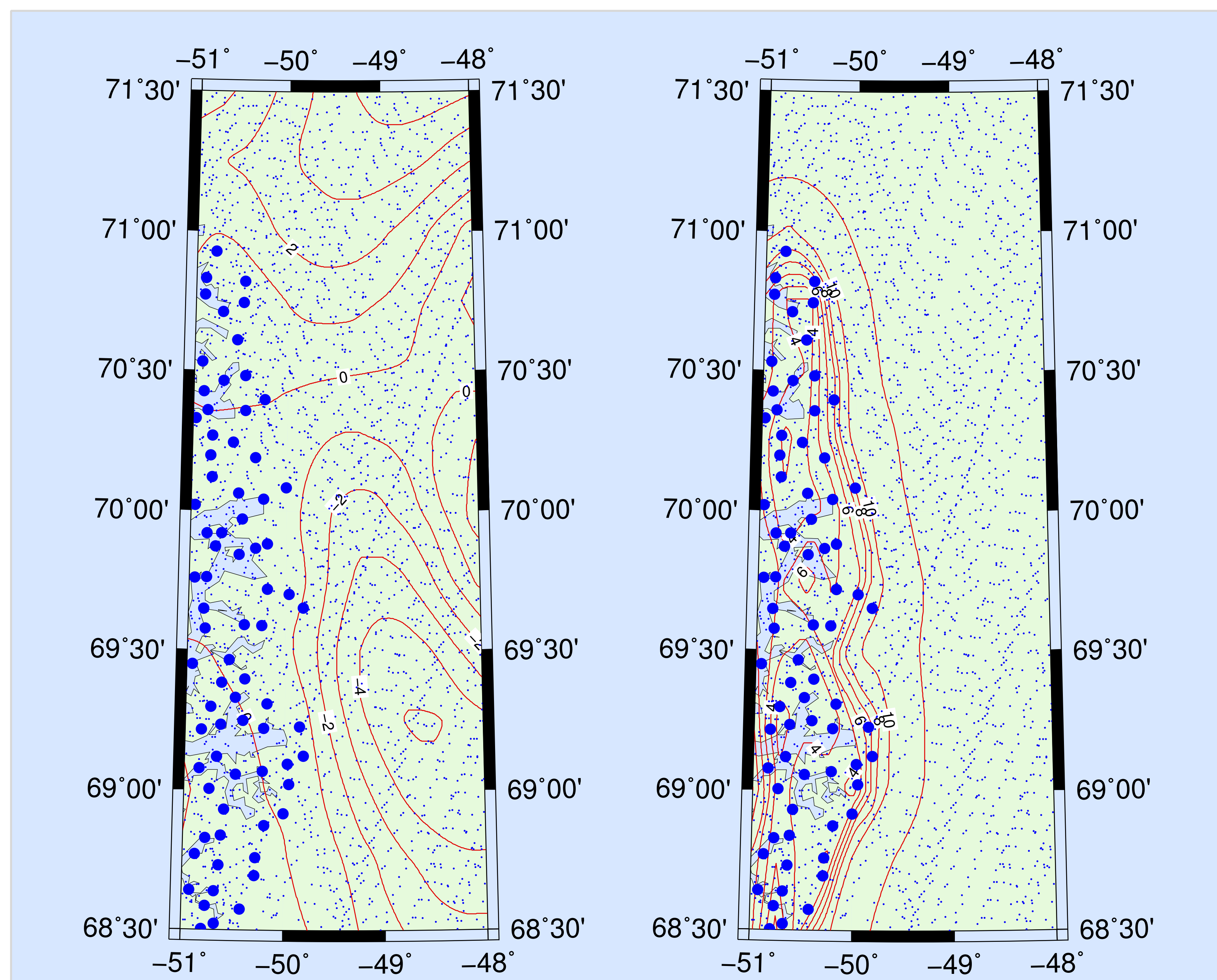


Figure 4: Differences between gravity anomalies (mgal) from 2011 to 2012 (left), and (right) error estimates of predicted anomalies (mgal). The location of GOCE data used is shown as small blue dots and ground gravity data as large blue dots.

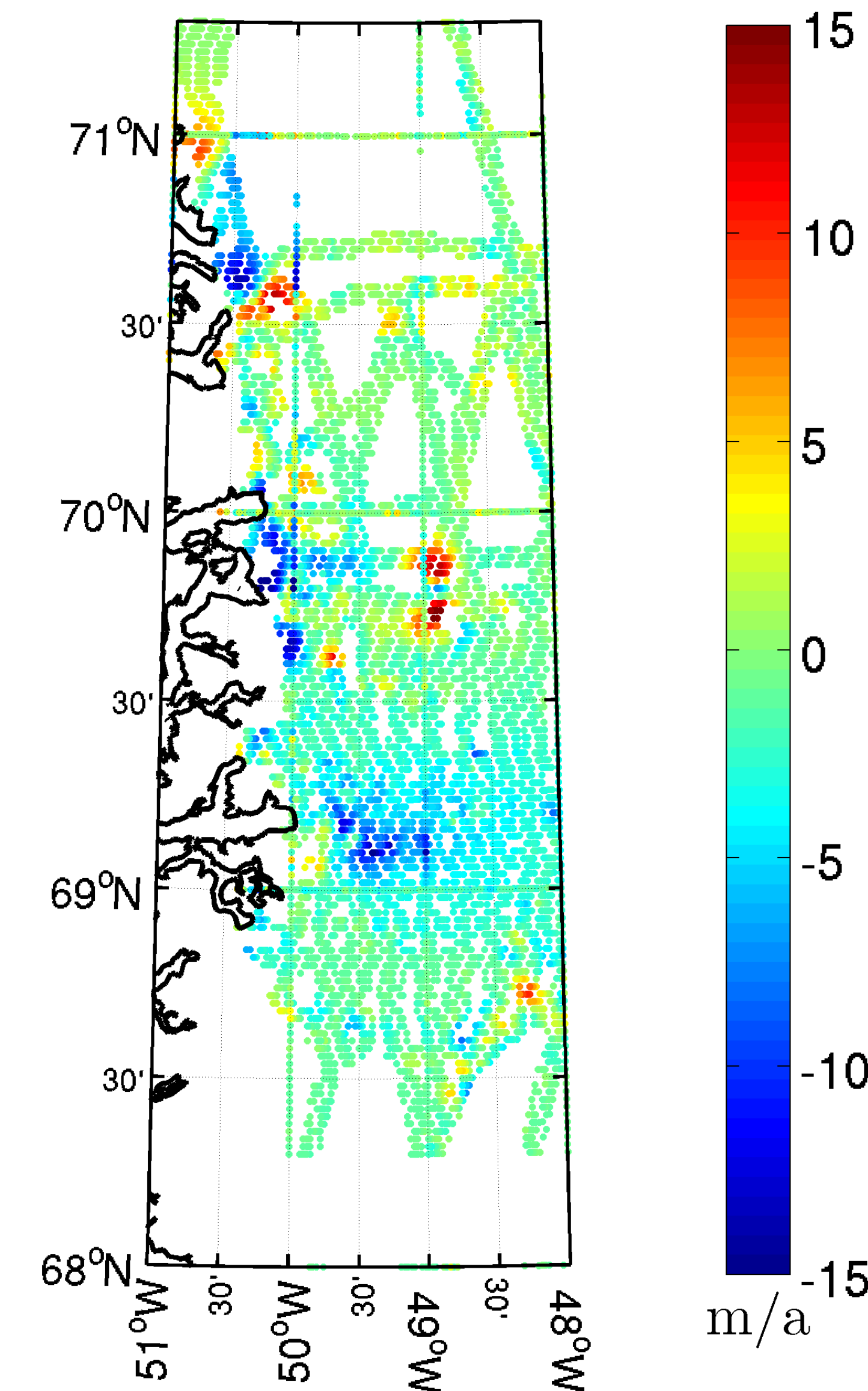


Figure 5: Surface elevation changes over Jakobshavn Isbrae. Obtained from ATM and PROMICE (2009-2012).

Results

The gravity anomaly differences vary from -4 to 2 mgal (Fig 4., left). It is negative, -2 mgal, (showing mass loss) around the Jakobshavn Isbrae (latitude 69°15', longitude 49°-50° W, where the yearly mass-loss has been estimated to correspond to -2 mgal (Fig 3.). The computed change range has estimated error from 2 to 10 mgal from West to East. This shows the capability of using GOCE Tzz and ground gravity to determine mass changes.

By introducing extra ground gravity observations (108 values) from West Greenland the prediction error was significantly reduced close to the coast, see Fig. 4. The differences between the gravity anomaly prediction for 2011 and 2012 are also shown in Fig. 4 (right).

Additional results

The GOCE DIR-3 model was also used to evaluate gravity values in the points of the Greenland airborne gravity survey performed in 1991 and 1992. The differences had a mean value of 0.9 and a standard deviation of 17.3 mgal for all of Greenland. In the South-West area the mean of the differences was 0.15 mgal and the standard deviation 7.14. This indicate that possibly no total mass loss has occurred in Greenland from 1992 to 2012.

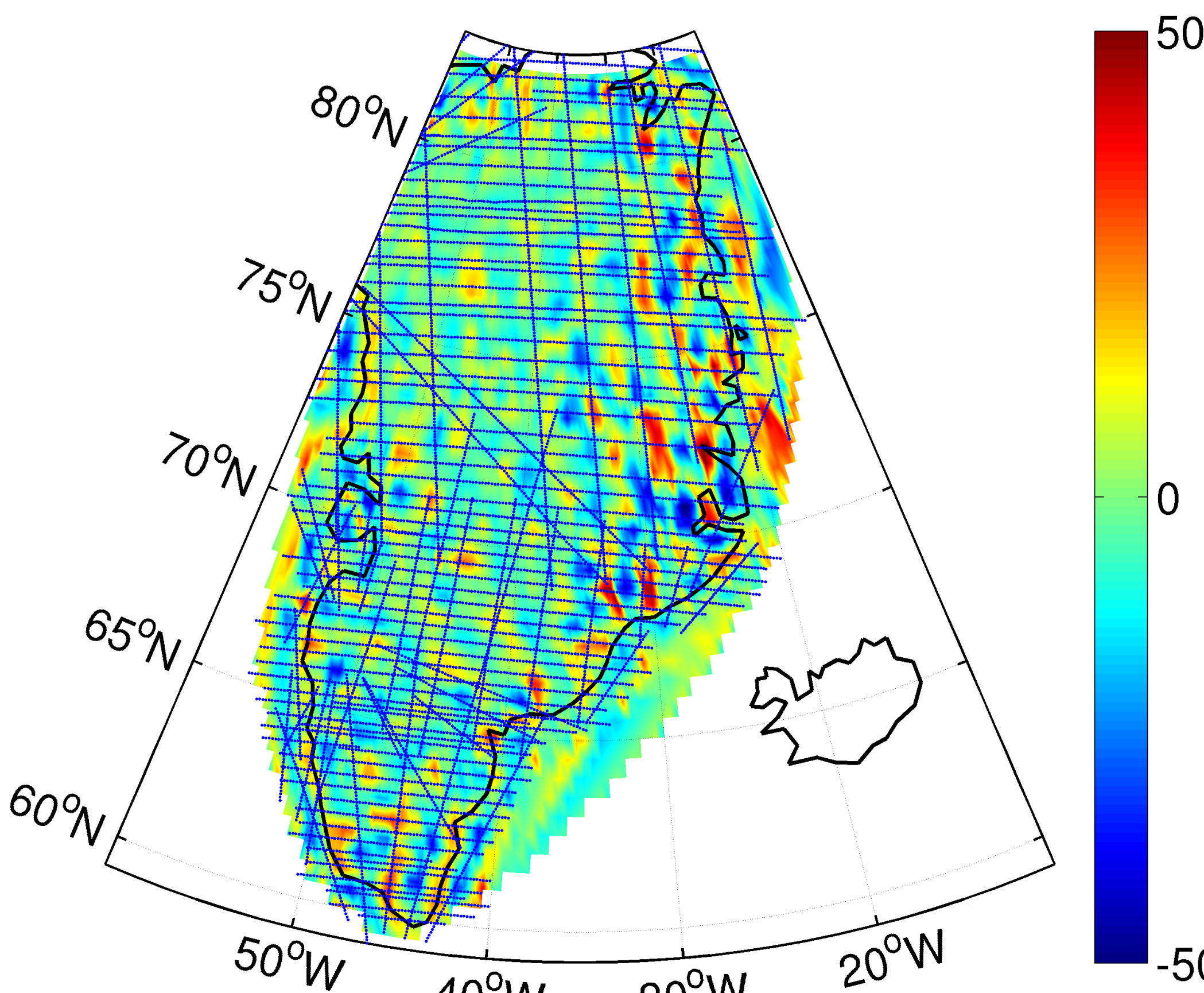


Figure 6: Differences of gravity anomalies calculated using the GOCE DIR-3 model with the observed GAP airborne gravity anomalies. Units are mgal.

Conclusions

- The use of GOCE data for the determination of mass changes is very difficult due to the data error of 5 to 10 mE, which propagates to an error of estimated ground gravity anomalies in an area like Greenland of 15-20 mgal. If gravity data located at points where no changes of gravity can be expected is added to the GOCE gradient data, improvement in the prediction of gravity anomaly changes caused by ice mass can be made. In this study, the largest mass changes have been detected close to the west Greenland coast, as it was reported by results based on GRACE [Sørensen [2010]. We have seen that mass loss of the expected order of magnitude for the period 2011-2012 in the Jakobshavn Isbrae area have been detected.

- Predicted ice mass loss inside the area of Jakobshavn Isbrae glacier and increase outside of the area was verified using ATM data.
- Further improvement can be made by removing the gravity effect of topography from GOCE Tzz gradients.

- Improvements may be also expected by using data from the final part of the GOCE mission during 2013 where the satellite was in a lower orbit. - Gravity anomalies calculated from the GOCE DIR-3 solution and compared with existing airborne data from 1991 and 1992 indicates that the total mass changes may be zero in this 20 year period.

- Older high quality gravity data observed at points, where no mass changes are expected, may as shown be used to enhance the use of satellite gravity data (and to reduce prediction error) for the study of other phenomena like ground-water changes in other areas.

References

- Brozena, J., M. Chalona, R. Forsberg and G. Mader (1992), The Greenland Aerogeophysical Project. EOS, AGU, DOI 10.1007/978-1-4613-9255-2_19
Bruinsma S.L., J. C. Marty, G. Balmino, R. Biancale, C. Foerste, O. Abrikosov, and H. Neumayer (2010), GOCE Gravity Field Recovery by Means of the Direct Numerical Method, (In: Lacoste-Francis, H. (eds.), Proceedings of the ESA Living Planet Symposium, ESA Publication SP 686), The 2010 ESA Living Planet Symposium, Bergen, Norway, 28 June - 2 July 2010.
Herceg, M. (2012), GOCE data for ocean modelling. PhD Thesis, Department of Geodesy, Technical University of Denmark, Copenhagen, Denmark
Johannessen, J.A., G. Balmino, C. Le Provost, R. Rummel, R. Sabadini, H. Suenkel, C. C. Tscherning, P. Visser, P. Woodworth, C. H. Hughes, P. Le Grand, N. Sneeuw, F. Perosanz, M. Aguirre-Martinez, H. Rebhan and M. Drinkwater (2003), The European Gravity Field and Steady-State Ocean Circulation Explorer Mission: Impact on Geophysics, Surveys of Geophysics, Vol. 24, no. 4, pp. 339-386, DOI 10.1023/B:GEO.0000004264.04667.5e
Levinsen, J. F., I. M. Howat and C. C. Tscherning (2013), Improving maps of ice sheet surface elevation change using combined laser altimeter and stereoscopic elevation model data. J. Glaciology, Vol. 59, no. 215, p. 525-532, DOI: 10.3189/2013jog12j114
Tscherning, C. C. (2013), Developments in the implementation and use of Least-Squares Collocation. IAG Proceedings 143, IAG2013
Tscherning, C. C., F. Rubek and R. Forsberg (1998), Combining Airborne and ground Gravity using Collocation. In: Forsberg, R., M. Feissel, R. Dietrich (Eds): Geodesy on the Move. Proceeding IAG Scientific Assembly, Rio de Janeiro, Sept. 1997, IAG Symp. Vol. 119, pp. 18-23, Springer V, DOI 10.1007/978-3-642-72245-5_3