



46200 Planning and Development of Wind Farms: Wind resource assessment using the WAsP software

Mortensen, Niels Gylling

Publication date:
2015

Document Version
Publisher's PDF, also known as Version of record

[Link back to DTU Orbit](#)

Citation (APA):
Mortensen, N. G. (2015). *46200 Planning and Development of Wind Farms: Wind resource assessment using the WAsP software*. DTU Wind Energy. DTU Wind Energy E No. 70(ed.2)

General rights

Copyright and moral rights for the publications made accessible in the public portal are retained by the authors and/or other copyright owners and it is a condition of accessing publications that users recognise and abide by the legal requirements associated with these rights.

- Users may download and print one copy of any publication from the public portal for the purpose of private study or research.
- You may not further distribute the material or use it for any profit-making activity or commercial gain
- You may freely distribute the URL identifying the publication in the public portal

If you believe that this document breaches copyright please contact us providing details, and we will remove access to the work immediately and investigate your claim.

46200 Planning and Development of Wind Farms: Wind resource assessment using the WAsP software



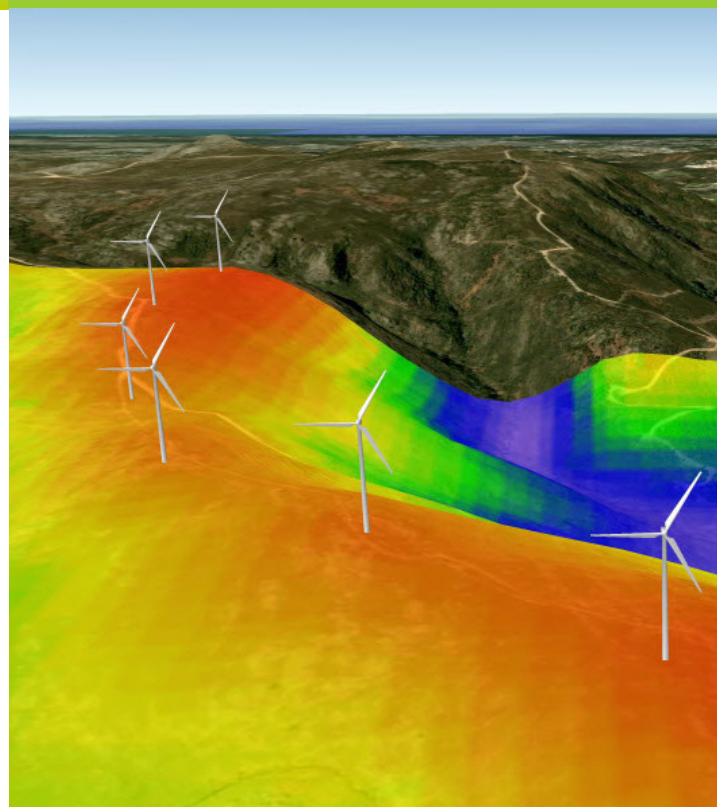
Department of Wind Energy E Report 2015

Niels G. Mortensen

DTU Wind Energy E-70 (ed.2)

December 2015

DTU Wind Energy
Department of Wind Energy



Authors: Niels G. Mortensen

Title: Wind resource assessment using the WAsP software

Department: Wind Energy

Summary (max 2000 characters):

These course notes are intended for the three-week course *46200 Planning and Development of Wind Farms* given each year at the Technical University of Denmark. The purpose of the course notes is to give an introduction to wind resource assessment and siting issues using the WAsP suite of programs.

DTU Wind Energy E-70 (ed.2)

December 2015

ISBN no.

978-87-93278-58-5

Project no.

44501 E-10

Sponsorship

DTU Wind Energy

Front page

Prospective wind farm site in northern Portugal, with a coloured representation of the wind resource draped over the terrain.

(© 2009 Google. Image © 2009

DigitalGlobe. Data SIO, NOAA,

U.S. Navy, NGA, GEBCO)

Pages: 42

Tables: 3

Figures: 25

References: 18

Technical University of Denmark

Department of Wind Energy

Frederiksborgvej 399

Building 118

4000 Roskilde

Denmark

Telephone 46775027

nimo@dtu.dk

www.vindenergi.dtu.dk

Contents

1 Introduction 5

- 1.1 Observation-based wind resource assessment 6
- 1.2 Numerical wind atlas methodologies 7
- 1.3 Wind resource assessment procedure 8
- 1.4 Energy yield assessment procedure 9

2 Meteorological measurements 10

- 2.1 Design of a measurement programme 10
- 2.2 Quality assurance 10

3 Wind-climatological inputs 11

- 3.1 Wind data analysis 11
- 3.2 Observed wind climate 12

4 Topographical inputs 13

- 4.1 Elevation map 13
- 4.2 Land cover map 14
- 4.3 Sheltering obstacles 16

5 Wind farm inputs 16

- 5.1 Wind farm layout 16
- 5.2 Wind turbine generator 17

6 WAsP modelling 17

- 6.1 Modelling parameters 17
- 6.2 WAsP analysis 19
- 6.3 WAsP application 20
- 6.4 Validation of the modelling 21
- 6.5 Special considerations 23

7 Additional technical losses 25

8 Modelling error and uncertainty 26

- 8.1 Prediction biases 27
- 8.2 Sensitivity analysis 28
- 8.3 Uncertainty estimation 28

9 Wind conditions and site assessment 30

- 9.1 Extreme wind and turbulence intensity 31
- 9.2 IEC site assessment 32

References 32

Acknowledgements 34

Appendices

- A WAsP best practice and checklist 35
- B Note on the use of SAGA GIS 37
- C Digitisation of the land cover (roughness) map 41
- D The Global Wind Atlas 42

46200 Planning and Development of Wind Farms

The general course objectives, learning objectives and contents for DTU 46200 are listed below for reference. The [full course description](#) is given in the [DTU Course Catalogue](#). The present notes are related to the wind resource assessment and siting parts only.

General course objectives

The student is provided with an overview of the steps in planning and managing the development of a new wind farm. The student is introduced to wind resource assessment and siting, wind farm economics and support mechanisms for wind energy. An overview of the various environmental impacts from wind farms is offered.

Learning objectives

A student who has met the objectives of the course will be able to:

- Describe the methodologies of wind resource assessment and their advantages and limitations.
- Explain the steps in the selection of a site for measurement of the wind resource and good practice for measurement of the wind resource.
- Calculate the annual energy production using the WAsP software for simple wind farm cases in terrain within the operational envelope of the WAsP model.
- Identify and describe factors adding to the uncertainty of the wind resource and wind farm production estimates.
- Estimate the most important key financial numbers of a wind project and explain their relevance.
- Identify the main environmental impacts from a wind farm and suggest mitigation measures.
- List the three most common policy tools for support of wind energy projects
- Explain the steps in the development of a wind farm layout considering annual energy production, wind turbine loads and environmental impact.
- Explain the main steps in developing the grid connection of a wind farm

Contents

An introduction to market, policy and support mechanisms relevant to wind energy. Wind resources and wind conditions: anemometry; design and siting of meteorological stations; wind distributions; observed, generalised and predicted wind climates; observational and numerical wind atlases, elevation maps and land cover, roughness classes and roughness maps; sheltering obstacles; wind farm wake effects, micro-scale flow modelling (WAsP), wind resource mapping; wind farm layout; wind farm annual energy production.

The procedure for obtaining an environmental permit for a wind farm. The various types of environmental impacts from a wind farm. Introduction to wind farm economics. Introduction to grid connection. The students will work in groups of 3 or 4. The group work will be documented in a report and be presented orally by all course participants.

1 Introduction

Wind resource assessment is the process of estimating the wind resource or wind power potential at one or several sites, or over an area. One common and well-known result of the assessment could be a wind resource map, see Figure 1.

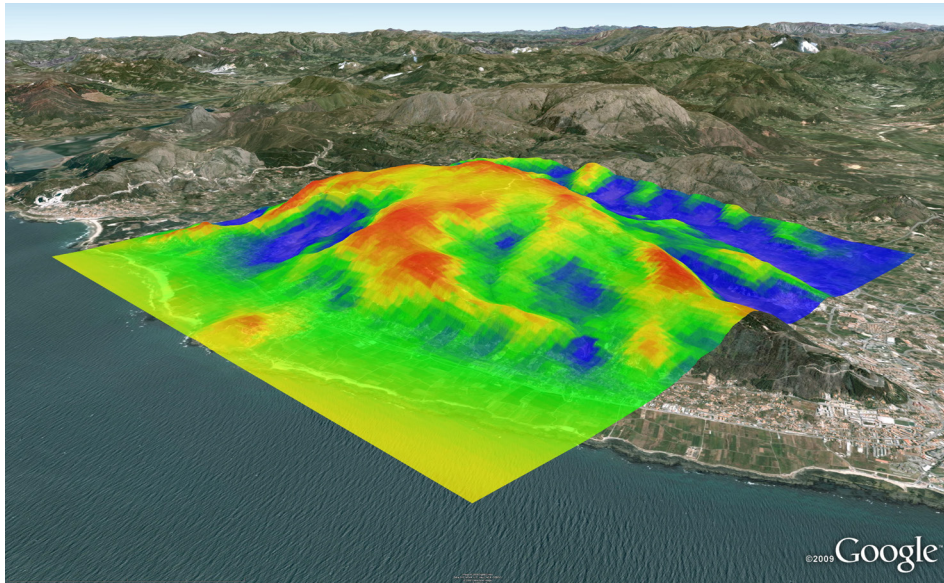


Figure 1. Wind resource map for Serra Santa Luzia region in Northern Portugal. (Image © 2009 DigitalGlobe. Data SIO, NOAA, U.S. Navy, NGA, GEBCO. © 2009 Cnes/Spot Image. Image © 2009 GeoEye).

The wind resource map usually shows the variation over an area of the mean wind speed or power density for a given height above ground level. While this may provide a good indication of the relative magnitude of the wind resource, a more realistic estimate is obtained when the sector-wise wind speed distributions are combined with the power curve of a given wind turbine to obtain a power production map, see Figure 2.

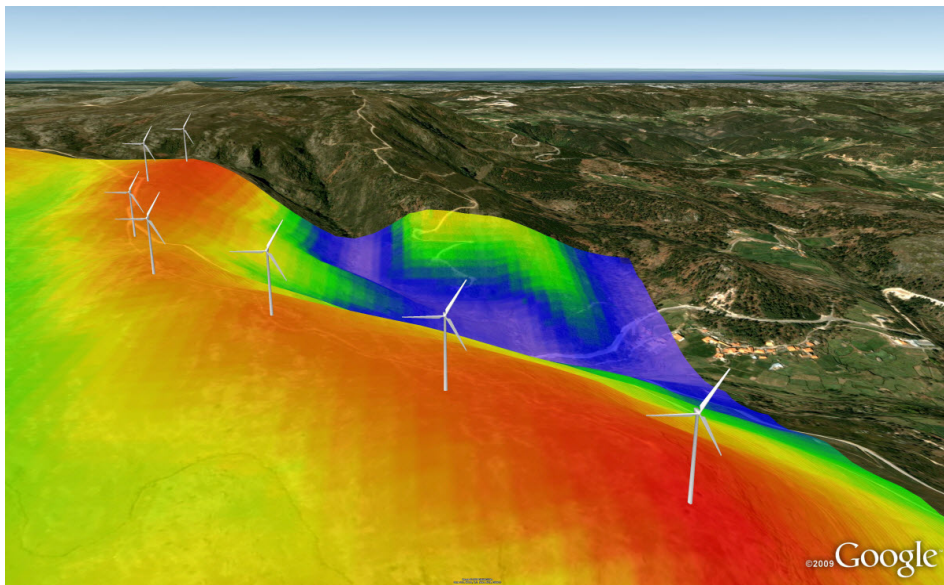


Figure 2. Power production map for a sample wind farm in Northern Portugal. (Image © 2009 DigitalGlobe. Data SIO, NOAA, U.S. Navy, NGA, GEBCO).

As can be deduced from Figure 3, WAsP is then based on two fundamental assumptions: first, the generalised wind climate is assumed to be nearly the same at the predictor (met. station) and predicted sites (wind turbines) and, secondly, the past (historic wind data) are assumed to be representative of the future (the 20-y life time of the wind turbines). The reliability of any given WAsP prediction depends very much on the extent to which these two assumptions are fulfilled.

1.2 Numerical wind atlas methodologies

WAsP has become part of a much larger framework of wind atlas methodologies, which also encompasses mesoscale modelling and satellite imagery analysis. This framework has been developed over the last decades at Risø and DTU (Frank *et al.*, 2001; Badger *et al.*, 2006; Hansen *et al.*, 2007) in order to be able to assess the wind resources of diverse geographical regions where abundant high-quality, long-term measurement data does not exist and where important flow features may be due to regional-scale topography. Figure 4 is a schematic presentation of the entire framework.

<div>Mesoscale</div> <div>Measurements</div> <div>Microscale</div>	Pre-processing Wind classes Terrain elevation Terrain roughness Input specifications Model setup	Modelling Mesoscale model; e.g. KAMM, WRF, MC2, MM5 or similar.	Post-processing Predicted wind climate Regional wind climate Predicted wind resource for selected terrain site coordinates	Numerical WA Mesoscale maps Database of results WAsP *.LIB files Uncertainties Parameters
	Met. stations Siting Design Construction Installation Operation	Wind data Data collection Quality control Wind database Wind statistics Observed wind climate	Verification Meso- and microscale results vs. measured data Adjust model and model parameters to fit data Satellite imagery (offshore sites only)	Applications Best practices Courses and training Microscale flow model Wind farm wake model ⇒ Wind farm AEP
	Pre-processing Wind speed distributions Wind direction distribution Terrain elevation Terrain roughness Sheltering obstacles	Modelling Microscale model: Linearised, e.g. WAsP, MS-Micro or similar. Non-linear, e.g. CFD (Computational Fluid Dynamics).	Post-processing Regional wind climate Predicted wind climate Predicted wind resource for selected terrain site coordinates	Observational WA Microscale maps Database of results WAsP *.LIB files Uncertainties Parameters

Figure 4. Overview of state-of-the-art wind atlas methodologies (Hansen *et al.*, 2007).

Wind resource assessment based on mesoscale modelling, the *numerical wind atlas*, can provide reliable data for physical planning on national, regional or local scales, as well as data for wind farm siting, project development, wind farm layout design and micro-siting of wind turbines. Bankable estimates of the power production from prospective wind farms require additional on-site wind measurements for one or more years.

The present course notes thus describe mainly the ‘grey’, ‘green’ and ‘yellow’ parts of the diagram above, i.e. what is referred to as the *observational wind atlas* methodology. Different inputs to the WAsP modelling are described in Sections 2 to 5; the modelling itself is described in Section 6, and the modelling errors and uncertainties in Section 8. Section 7 lists the different types of additional losses in the wind farm and Section 9 contains a very brief cookbook approach to site assessment using WAsP Engineering.

In addition to the present course notes, the WAsP help system (Mortensen *et al.*, 2014) contains a *Quick Start Tutorial* section which illustrates the essentials of the WAsP software user interface.

1.3 Wind resource assessment procedure

The descriptions above and in the remainder of these notes reflect closely the structure and terminology of the wind atlas methodology and the WAsP implementation of this. In more general terms, the steps in the wind resource assessment procedure can be illustrated as is shown in Figure 6.

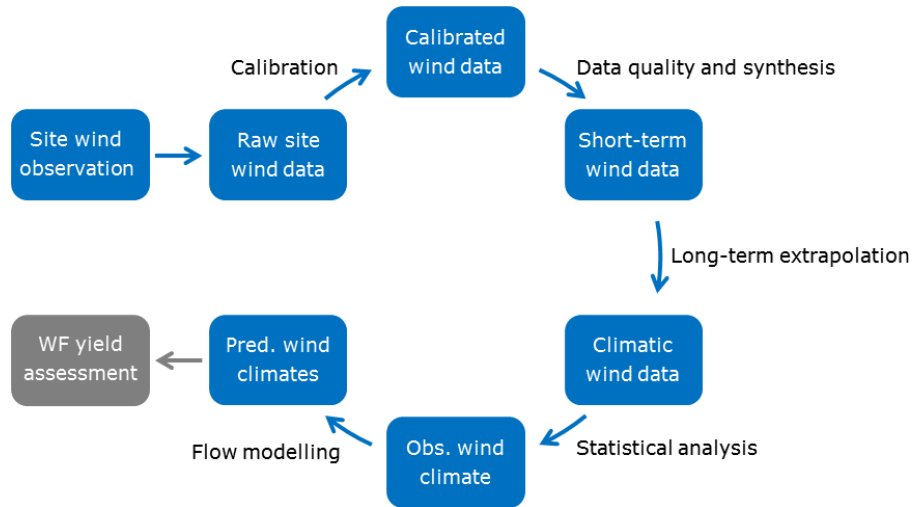


Figure 5. Overview of the steps in the wind resource assessment procedure.

Wind measurements are made at the wind farm site mast; usually every 10 minutes all year round. These raw site wind data are converted into calibrated wind data by the data logging system, employing calibration expressions for each individual instrument.

The quality and integrity of the calibrated wind data are then assessed; e.g. by visual inspection of the time-series and by data analyses, as described in Section 3. Missing data may be substituted with values derived from other similar or redundant sensors.

The aim is to establish the most accurate, reliable and complete data set for the site mast. Next, this data set must be seen in the context of the long-term wind climate at the site and an adjusted data set representing the long-term climatology should be established.

The analyses so far are mostly carried out using the wind data time-series. When a data set representing the long-term climatology at the site has been established, this can be used to calculate the statistics of the wind climate: the distributions of wind speed and wind direction, as well as the mean values, standard deviations and other statistics.

The last step in the wind resource assessment procedure shown in Figure 5 is to predict or estimate the long-term wind climates at the prediction sites, which are most often the turbine sites in a wind farm. The tool used for this step is a microscale flow model which has the ability to extrapolate the observed wind climate to the prediction sites.

There are several kinds of ‘prediction’ or ‘estimation’ at play here: first, we estimate what the wind climate has been like in the past at our site mast, by referencing our observations to a suitable long-term data set. Secondly, we try to predict what the wind climate has been like at our wind turbine sites, by extrapolating the observed wind climate to those sites.

Finally, we often (silently) make the assumption (and prediction) that the predicted wind climate is representative of what is going to happen in the future; say, the over the lifetime of the wind turbines.

1.4 Energy yield assessment procedure

We can focus on the energy yield assessment procedure in a similar way as above and identify the following steps (Figure 6):

1. **Site wind climate = Site wind data ± [long-term extrapolation effects]**
Using a *long-term extrapolation procedure*, the site wind data are referenced and adjusted according to the long-term climatology of the area.
2. **Reference AEP = Wind climate at hub height plus [power curve]**
The reference AEP is calculated using the predicted wind climate at hub height at the mast location and the site-specific wind turbine power curve. However, most of the time this step is surpassed and the gross AEP is calculated directly.
3. **Gross AEP = Reference AEP ± [terrain effects]**
Using a *flow model*, the observed wind climate at the mast site is transformed to the predicted wind climates at the wind turbine sites of the wind farm. The ‘flow modelling’ part of Figure 6 includes both vertical and horizontal extrapolations.
4. **Potential AEP = Gross AEP – [wake losses]**
Using a *wake model*, the wake losses at each turbine site are estimated and subtracted from the gross AEP. This corresponds to the WAsP ‘net AEP’.
5. **Net AEP = Potential AEP – [technical losses]**
The additional *technical (operational) losses* in the wind farm are subsequently estimated and subtracted from the potential AEP to get the net AEP value at the point of common coupling (PCC).
6. **P_{90} AEP = Net AEP – 1.282 × [uncertainty estimate]**
The aggregate *uncertainty* of the entire energy yield process is estimated and the net AEP is adjusted to obtain a net value corresponding to a certain probability of exceedance, e.g. the P_{90} value as shown above.

By dividing the prediction process into these steps we have isolated the different model calculation results and it is therefore fairly straightforward to compare different methods and models (Mortensen *et al.*, 2012, 2015). Figure 6 illustrates the steps in the procedure.

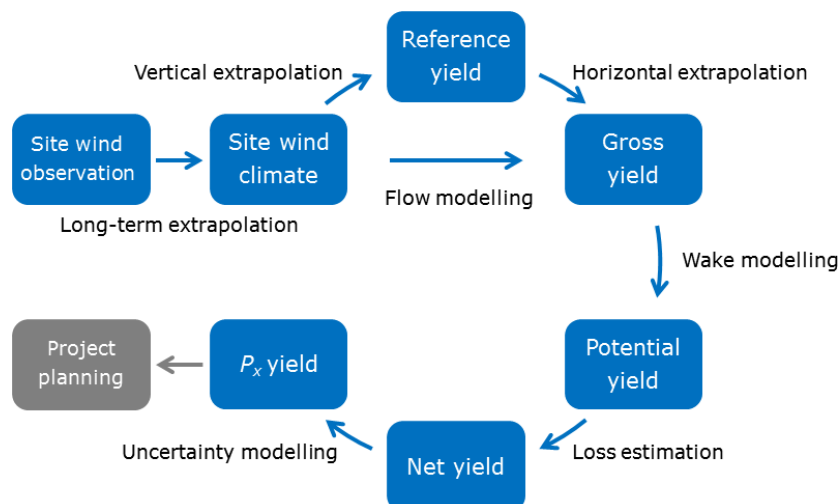


Figure 6. Overview of steps in the wind farm energy yield assessment procedure.

These steps and their definitions are not universally agreed or even used; however, IEC and Measnet working groups are addressing these issues at the moment.

2 Meteorological measurements

WAsP predictions are mostly based on the *observed wind climate* at the met. station site; i.e. time-series data of measured wind speeds and directions over one or several years that have been binned into intervals of wind direction (the wind rose) and wind speed (the histograms). Therefore, the quality of the measurement data has direct implications for the quality of the WAsP predictions of wind climate and annual energy production. In short, the wind data must be *accurate*, *representative* and *reliable*.

2.1 Design of a measurement programme

It is beyond the scope of these course notes to describe best practice for wind measurements in detail, but the aspects discussed below are particularly important.

If possible, the measurement programme should be designed based on a preliminary WAsP analysis of the wind farm site. Such design ensures that the measurements will be representative of the site, i.e. that the mast site(s) represent the relevant ranges of elevation, land cover, exposure, ruggedness index, etc. found on the site. In short, we apply the *WAsP similarity principle* (Landberg *et al.*, 2003) as much as possible when siting the mast(s). This design analysis may conveniently be based on SRTM elevation data and land cover information from satellite imagery such as Google Earth.

It is equally important in the design stage to use an observed wind climate that resembles the wind climate that may be observed at the wind farm site; e.g. by using data from a nearby met. station or modelled data from the region. A representative wind rose is particularly valuable as this may be used to determine the design of the mast layout; e.g. the optimum boom direction is at an angle of 90° (lattice mast) or 45° (tubular mast) to the prevailing wind direction. The height of the top (reference) anemometer should be similar to that of the wind turbine hub height; preferably $> 2/3 h_{\text{hub}}$.

Anemometers should be individually calibrated according to international or at least traceable standards. Several levels of anemometry should be installed in order to obtain a high data recovery rate (above 90-95%) and for analyses of the vertical wind profiles. Air temperature (preferably at hub height) and barometric pressure should be measured in order to be able to calculate air density, which is used to select the appropriate wind turbine power curve data set.

It is extremely valuable – and sometimes required for bankable estimates – to install two or more masts at the wind farm site; cross-prediction between such masts will provide assessments of the accuracy and uncertainty of the flow modelling over the site. Two or more masts are also required in complex and steep terrain, where ruggedness index (RIX) and Δ RIX analyses – as well as WAsP CFD calculations – are necessary.

2.2 Quality assurance

For projects where the measurement campaign has already been initiated or carried out, it is important to try to assess the quality of the collected wind data, as well as to ensure the quality of any and all site data used for the analysis. A site inspection trip is required and should be part of any (commercial) WAsP study – whether it is a second opinion, due diligence or feasibility study.

A number of WAsP Site/Station Inspection checklists and forms exist for planning the site visit and for recording the necessary information. The positions of the met. mast(s) and turbine sites are particularly important. Bring a handheld GPS (Global Positioning

System) for the site visit and note down the projection and datum settings; change these if required. Determine the coordinates of all masts, turbine sites, landmarks and other characteristic points on site (repeated readings over several days increase the accuracy).

Documentation of the mast setup and site may be done by taking photos of the station and its surroundings ($12 \times 30^\circ$ -sector panorama). Use a compass when taking the sector pictures. Download the GPS data and photographs to your PC as soon as possible (daily).

The characteristics of anemometers and wind vanes deteriorate over time and after one or a few years they may not operate according to specifications. An important part of operating a wind-monitoring mast is therefore to exchange the instruments at regular intervals, as well as rehabilitating and recalibrating instruments in stock.

3 Wind-climatological inputs

The wind-climatological input to WAsP is given in the *observed wind climate*, which contains the wind direction distribution (wind rose) and the sector-wise distributions of mean wind speed (histograms), see Figure 7. The observed wind climate file should also contain the wind speed sensor (anemometer) height above ground level in metres and the geographical coordinates of the mast site: latitude and longitude. The latitude is used by WAsP to calculate the Coriolis parameter.

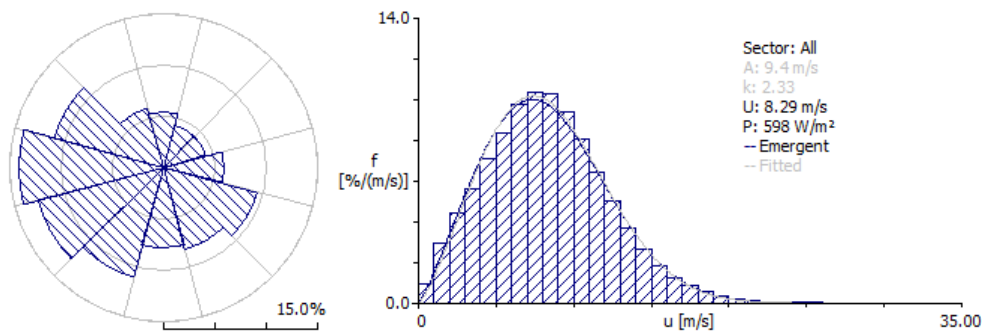


Figure 7. Sample observed wind climate from Sprogø 1977-99; wind rose to the left and omni-directional wind speed distribution to the right (data courtesy of Sund & Bælt).

Wind speeds must be given in metres per second [ms^{-1}] and wind directions in degrees clockwise from north [$^\circ$], i.e. from 0° (north) through 360° . The wind direction indicates the direction from which the wind blows. The observed wind climate is usually given for 12 sectors and the wind speed histograms using 1 ms^{-1} wind speed bins.

3.1 Wind data analysis

The wind data analysis and calculation of the observed wind climate may conveniently be done using the *WAsP Climate Analyst*. Whether the wind data are measured by the organisation carrying out the analysis or by a third party, a number of data characteristics must be known, such as: the data file structure, time stamp definition, data resolution (discretisation), calm thresholds, and any flag values used for calms and missing data. This information may be collected by filling out a WAsP Data Description Form; in the subsequent analysis all input values in the Climate Analyst should correspond to the data specifications.

In the Climate Analyst, the time traces of wind direction and speed, as well as a polar representation of concurrent data, can be plotted and inspected, see Figure 8.

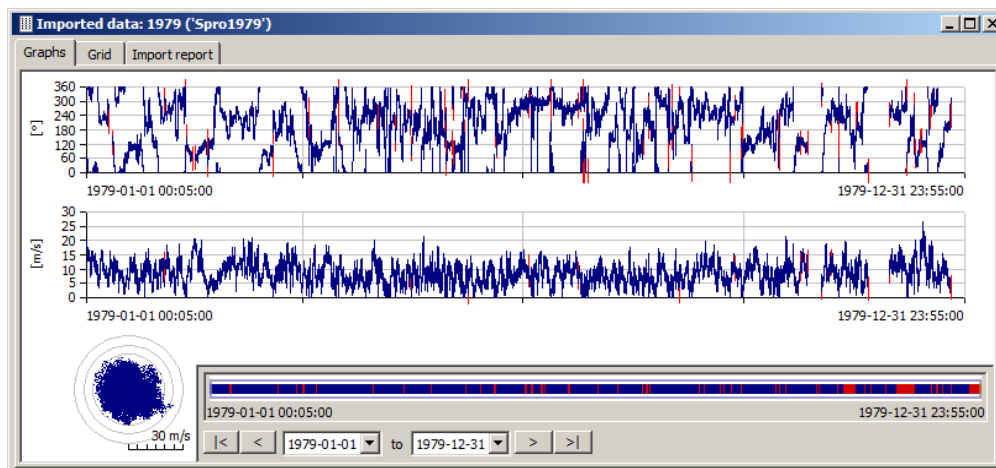


Figure 8. Time traces of wind direction (upper, 0-360°) and wind speed (lower, 0-30 m/s) from Sprogø for the year 1979. The graphic in the lower left of the Climate Analyst window shows concurrent data in a polar representation (data courtesy of Sund & Bælt).

The Climate Analyst checks the time stamps and observation intervals upon input of each data file, and also checks for missing records in the data series. However, the main quality assurance (QA) is done by visual inspection of the time series and polar plot, as well as the resulting observed wind climate. Things to look out for are e.g.:

1. Are there any spikes or sudden drops in the data series?
2. Are there periods of constant data values in the data series?
3. Are there periods of missing data in the data series?
4. Are there any unusual patterns in the data series?
5. Are there any unusual patterns in the polar scatter plot?
6. Do the wind speed time traces follow each other for different anemometers?
7. Do the wind direction time traces follow each other for different vanes?
8. Do the measured and Weibull-derived values of U and P compare well?
9. Does the calm class ($0-1 \text{ ms}^{-1}$) in the histogram look realistic?

Finally, the observed wind climate is calculated and exported to an OWC file. The OWC file can subsequently be inserted into the WASP hierarchy, as a child of a meteorological station member.

3.2 Observed wind climate

The observed wind climate (OWC) should represent as closely as possible the long-term wind climate at anemometer height at the position of the meteorological mast. Therefore, an integer number of full years must be used when calculating the OWC, in order to avoid any *seasonal bias*. For the same reason, the data recovery rate must be quite high (> 90-95%) and any missing observations should preferably be distributed randomly over the entire period.

Wind data series from prospective wind farm sites rarely cover more than one or a few full years, so they must be evaluated within the context of the long-term wind climate, in order to avoid any *long-term* or *climatological bias*. Comparisons to near-by, long-term meteorological stations or to long-term modelled data for the area can be made using simple (or complicated) measure-correlate-predict (MCP) techniques.

WAsP uses Weibull distributions to represent the sector-wise wind speed distributions and the so-called *emergent* distribution for the total (omni-directional) distribution. The difference between the fitted (and emergent) and the observed wind speed distributions should therefore be small: less than about 1% for mean power density (which is used for the Weibull fitting) and less than a few per cent for mean wind speed.

4 Topographical inputs

The topographical inputs to WAsP are given in a *vector map*, which can contain height contour lines, roughness change lines and lines with no attributes (say the border of the wind farm site). In addition, nearby sheltering obstacles may be specified in a separate *obstacle group*, which can be shown on the map too.

Map coordinates and elevations must be specified in meters and given in a Cartesian map coordinate system. The map projection and datum should be specified in the Map Editor so this information is embedded in the map file. All metric coordinates used in the WAsP workspace should of course refer to the same map coordinate system. Obstacle distances and dimensions must likewise be given in meters.

The Map Editor can do the transformation from one map coordinate system to another; the Geo-projection utility program in the Tools menu can further transform single points, lists of points and lists of points given in an ASCII data file.

4.1 Elevation map

The elevation map contains the *height contours* of the terrain. These may be digitised directly from a scanned paper map – as described in the Map Editor Help facility – or may be obtained from a database of previously digitised height contours, established by e.g. the Survey and Cadastre of a country or region. Alternatively, they can also be generated from gridded or random spot height data using contouring software.

The elevation map should extend at least several (2-3) times the horizontal scale of significant orographic features from any site – meteorological mast, reference site, turbine site or resource grid point. This is typically 5-10 km. A widely cited rule for the minimum extent of the WAsP map is $\max(100 \times h, 10 \text{ km})$, where h is the height of the calculation point above ground level; this is usually sufficient for the elevation map.

The accuracy and detail of the elevation map are most critical close to the site(s), therefore it is recommended to add all *spot heights* within the wind farm site and close to the meteorological mast(s); one can also interpolate or digitise extra contours if necessary. The contour interval should be small ($\leq 10 \text{ m}$) close to calculation sites, whereas the contour interval can be larger further away from these sites ($\geq 10 \text{ m}$).

Non-rectangular maps (circular, elliptic, irregular) are allowed and sometimes preferred, in order to reduce the number of points in the map, while at the same time retaining model calculation accuracy. There is no limitation to the size of the map, but the calculation time is proportional to the computer memory used for the map data.

The final elevation map should be checked for outliers and errors by checking the range of elevations in the map. An elevation map generated from a gridded data set could also be compared to a scanned paper map of the same area. If comparing the relief to Google Earth, it should be borne in mind that the GE representation of the 3D terrain is usually smoother than the WAsP representation.

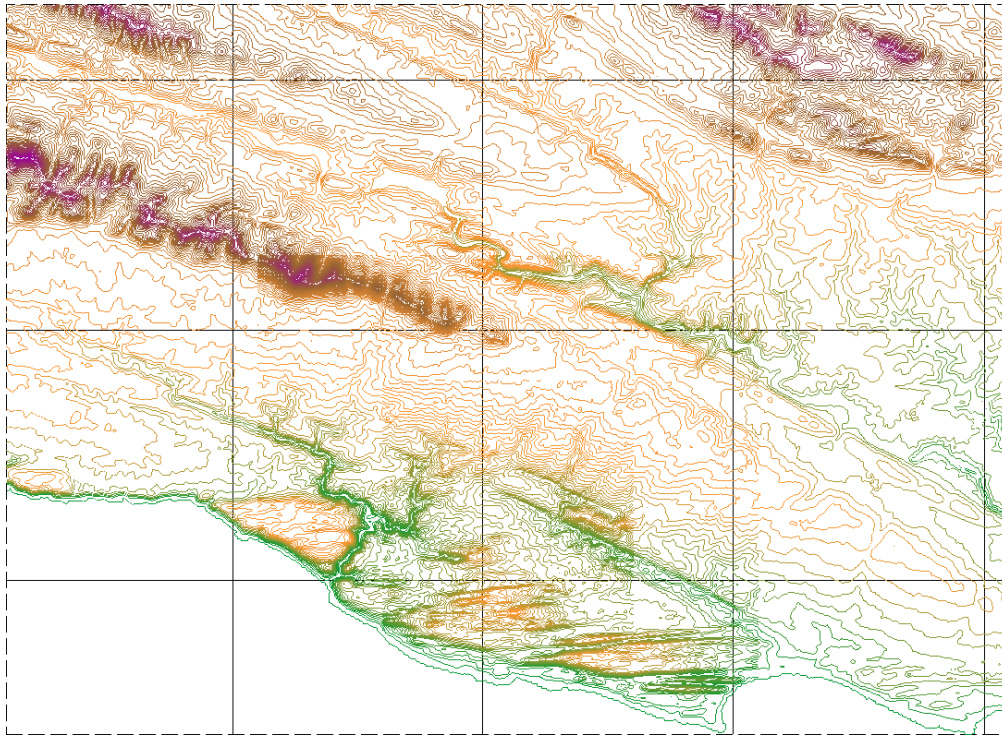


Figure 9. Elevation map for a meteorological station in South Africa (data courtesy of the WASA project). Three contour intervals are used: 5 m close the site and 10 and 20 m further away. Map grid lines are shown for every 10 km.

Contour maps from gridded data

High-resolution gridded (raster) elevation data exist for many parts of the world, one such data set is derived from the Shuttle Radar Topography Mission (SRTM). The Map Editor can employ SRTM data directly for making elevation vector maps.

For other gridded data sets, it is necessary to construct the height contours (vector map) from the raster data. One freely available software program that can be used to make WASP vector maps from gridded data is described in appendix B: “A note on the use of SAGA GIS”.

4.2 Land cover map

The land cover (roughness length) map contains a classification of the land cover, where each class/area is characterised by a specific roughness length value, z_0 . The *roughness change lines* may be digitised from a scanned paper map, aerial photograph or satellite imagery as described in the Map Editor help facility. They may also be obtained from a database of previously digitised land cover, established by e.g. the Survey and Cadastre of a country or region. The Corine database covering the EU countries is an example of one such database, see Figure 10.

Internal boundary layer theory suggests that the roughness map should extend to at least $100 \times h$ from any site – meteorological mast, reference site, turbine site or resource grid point – where h is the height of the WASP calculation. However, it turns out that this is not enough, and at least 50% are often added to this number. For a wind turbine with a hub height of 80 m, the roughness map will therefore be about $25 \times 25 \text{ km}^2$. For a wind farm of 80-m turbines, the extent of the wind farm area should be added to this size. Likewise, the extent of any resource grid should be added.

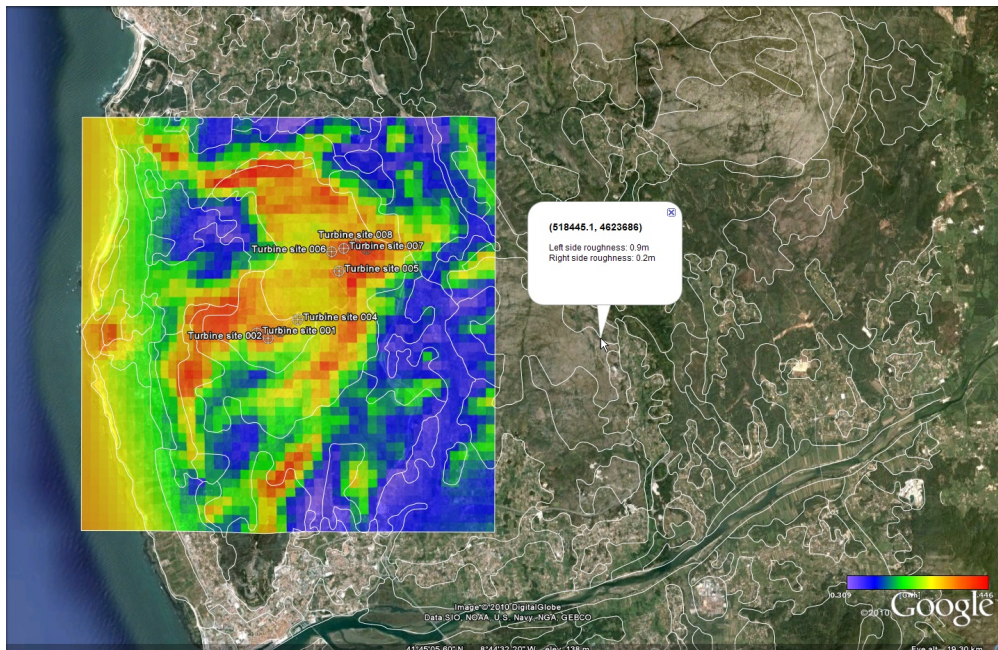


Figure 10. Land cover map for a site in Northern Portugal. The thin white lines show a land cover classification derived from the Corine 25-ha vector data set. A transformation table is needed for translating the land cover codes to roughness lengths.

Roughness lengths must be specified in meters and the roughness length of water surfaces must be set to 0.0 m in WAsP! This is because WAsP also uses this value as a flag value: ‘0 m’ indicates a water surface, whereas a small roughness length means a smooth land surface (snow, sand, bare soil or the like).

The final roughness map should be checked systematically for errors, since these may give rise to erratic results in the WAsP calculations. Check the range of roughness length values in the main window of the Map Editor, and check for *dead ends* and *cross points* in the map display window (View > Nodes, Dead ends and Cross points). Some map editing will be needed to eliminate any dead ends and cross points.

When there are no more dead ends and cross points in the map, the consistency of the roughness values must be checked (View > Line Face Roughness errors) – there must be no *line face roughness (LFR) errors*! Finally, the roughness classification and values should be verified against a scanned paper map or by viewing the roughness change lines in Google Earth. The map may also be verified during a visit to the site.

All maps and images of the terrain are snap shots of the state of the terrain surface. The land cover and roughness length information used should of course correspond to the modelling scenario: use a historic (or present-day) map for modelling the meteorological mast(s) and use a present-day (or future) map for modelling the wind farm sites.

Roughness maps from gridded data

High-resolution gridded (raster) land cover data exist for many parts of the world. The current version of WAsP or the Map Editor cannot employ such data directly, so it is necessary to construct the roughness change lines (vector map) from the raster data. There is currently no standard procedure for making vector roughness maps from raster land cover data; however, some techniques have been demonstrated using GIS systems or the WAsP Terrain Workshop. In addition, work is in progress to make the WAsP models use gridded elevation and land cover data directly.

4.3 Sheltering obstacles

Terrain features such as houses, walls, shelter belts, or a group of trees, that are quite close to the WASP calculation site may be treated as *sheltering obstacles* and modelled using the shelter model of WASP, see Figure 3. The following simple rule-of-thumb may be used to determine which model to use:

- If the point of interest (anemometer, turbine hub or other calculation point) is closer to an obstacle than about 50 obstacle heights (H) and its height lower than about 3 obstacle heights – then treat the feature as a sheltering obstacle and use the shelter model.
- If the point of interest is further away than $50H$ and/or higher than $3H$, then treat the feature as a roughness element, i.e. adding to the roughness of the terrain.

5 Wind farm inputs

The wind farm inputs to WASP consist of the layout of the wind farm (turbine site coordinates) and the characteristics of the wind turbine generator(s): hub height, rotor diameter and the site-specific power and thrust curves.

5.1 Wind farm layout

WASP does not contain any advanced layout design tools, so the layout must be done free-hand or calculated in e.g. MS Excel. Turbine site coordinates may then be copied and pasted into WASP. Free-hand layouts may be established quickly in the vector map by pressing the Ctrl-key and then dragging a turbine site (cloning) to a new turbine position. Distance circles around the turbine positions can be shown in the *Spatial* view as an aid in keeping a certain distance between the turbine positions.

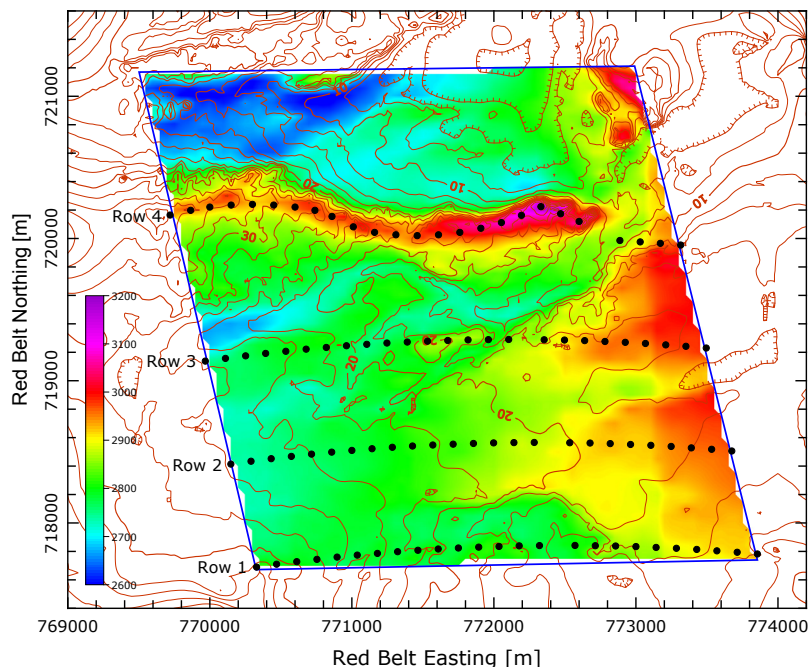


Figure 11. Sample wind farm layout in Zafarana, Egypt (Mortensen et al., 2005). The layout is mainly determined by the available land, the wind resource and aesthetics. Row 1-3 follow simple arcs, in which the positions were calculated using MS Excel; row 4 follow a terrain feature and the positions were originally drafted by hand.

5.2 Wind turbine generator

It is important to use *site-specific* wind turbine generator data (i.e. power and thrust coefficient curves) when calculating the AEP of the wind farm. These may be chosen by selecting the right performance table in the wind turbine generator window in WAsP; where the tables correspond to specific values of air density and/or noise level. If such data do not exist already, they have to be obtained from the wind turbine manufacturer.

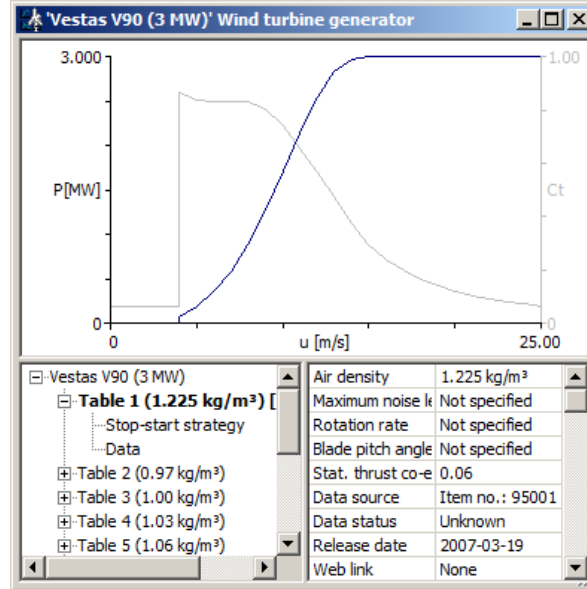


Figure 12. Power and thrust curves for a Vestas V90 3-MW wind turbine. Different tables (lower left) correspond to different air densities or sound levels.

6 WAsP modelling

Most WAsP studies in the past have been carried out using the default parameters of WAsP. With version 10, project air density was added as a parameter and this is now regularly changed as described below. The wind atlas structure is also often changed because of the many masts and turbines with heights between 50 and 100 meters. Finally, more users have begun tweaking the heat flux values in order to better model the vertical wind profiles.

6.1 Modelling parameters

A few modelling parameters may be changed at an early stage in the WAsP calculations: site air density, plus heights and roughness classes in the generalised wind climate.

Site air density

An estimate of the site air density must be made at any wind turbine or wind farm site in order to calculate a realistic wind power density and annual energy production (AEP). Air density can be calculated from measurements of atmospheric pressure and ambient air temperature at the site:

$$\rho = \frac{B \times 100}{R \times (T + 273.15)} \quad (1)$$

where ρ is air density (kg m^{-3}), B is atmospheric pressure (hPa), R is the gas constant for dry air ($287.05 \text{ J kg}^{-1} \text{ K}^{-1}$) and T is air temperature ($^{\circ}\text{C}$).

If measurements of atmospheric pressure have not been carried out, the *Air Density Calculator* of WAsP can be used to estimate the air density from site elevation and the annual average air temperature at the site. A comparison of measured and WAsP-derived mean air densities for 10 sites in South Africa (Mortensen *et al.*, 2014) and eight sites in NE China (Mortensen *et al.*, 2010) is shown in Figure 13.

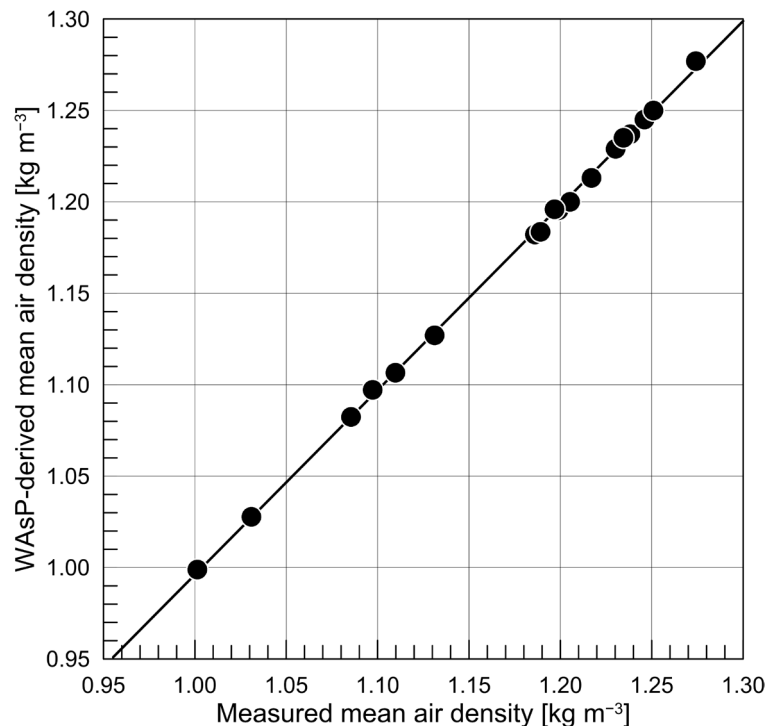


Figure 13. Measured and estimated mean air densities for 10 stations in South Africa (Mortensen *et al.*, 2014) and eight stations in NE China (Mortensen *et al.*, 2010).

If measurements of air temperature are not carried out, an annual average air temperature at the site must be estimated and input to the air density calculator.

The appropriate performance table in the *Wind turbine generator member* of WAsP is then selected using the calculated or estimated site air density.

Wind atlas structure

The generalised wind climate (wind atlas data set) is specified for five standard heights above ground level and five land cover (roughness) classes. These standard conditions should span the characteristics of all calculation sites in the project and WAsP is then able to interpolate between these conditions. However, the standard settings may also be adapted to the project in question.

The default heights in the WAsP wind atlas are 10, 25, 50, 100 and 200 m a.g.l. If the wind turbine hub heights or anemometer heights are somewhere between these values, one or more of these heights may be adapted to the project characteristics; e.g. 10, 20, 40, 62 and 100 m, see Figure 14. A maximum of five heights can be specified.

The default roughness classes in the wind atlas correspond to roughness lengths (z_0) of 0, 0.03, 0.10, 0.40 and 1.5 m. If large parts of the terrain has a roughness length somewhere between or outside of these values, e.g. like the low values of many desert surfaces, one or more of these values may be adapted to the project.

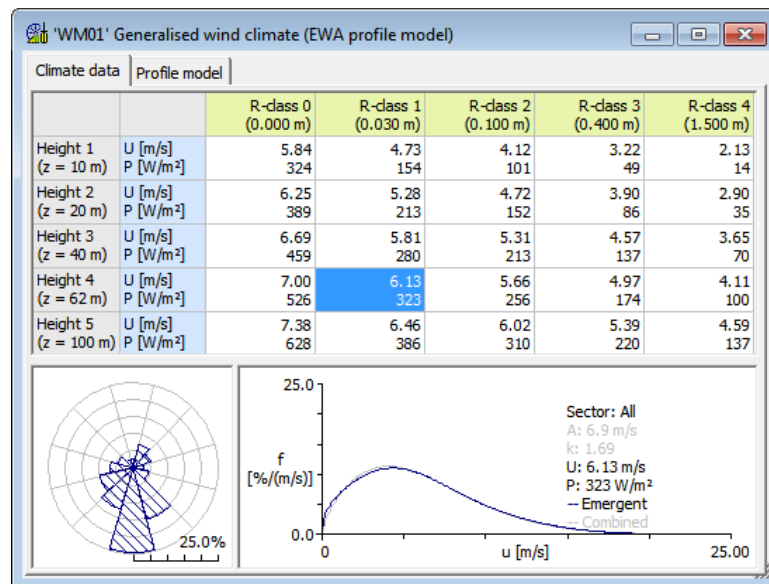


Figure 14. Sample wind atlas data set where the heights are adapted to site conditions. Data courtesy of the Wind Atlas for South Africa (WASA) project.

Atmospheric stability

WASP contains a stability model which employs separate mean and RMS heat flux values for over-land and over-water conditions; where over-water conditions are defined as areas of the vector map where the roughness length $z_0 = 0$ m. The default wind profile over land corresponds to slightly stable conditions and the wind profile over water to near-neutral conditions; the exact heat flux values are given in the WASP project configuration.

The default heat flux values were originally determined for the European Wind Atlas (Troen and Petersen, 1989) but have also worked well for many other parts of the world. Note, that the heat fluxes are not identical to what can be measured using e.g. a sonic anemometer, but have the same qualitative meaning.

The mean (and rarely RMS) heat flux value may be adjusted to site conditions – in order to tweak the wind profile slightly – but this should only be done following careful analysis and improvement of the elevation and land cover map. Furthermore, mast flow distortion should be evaluated and taken into account in the analysis. Since the WASP heat flux values cannot be determined objectively (in the present version), they must be based on careful wind profile analysis, see Figure 18.

6.2 WASP analysis

WASP *analysis* is the transformation of the wind climate observed at a meteorological station to the generalised (also called regional) wind climate. A typical WASP analysis as it appears the WASP hierarchy is shown in Figure 15.

The generalised wind climate may be *dynamic*, as indicated in Figure 15 by the small mast in the icon; or *static*, if the wind atlas data set is simply a previously calculated data file. The dynamic generalised wind climate may contain a map, which is then specific to the met. station site. The met. station can contain an obstacle group, which is then specific to the met. mast. The map and obstacle group should of course correspond to the conditions in the time period when the wind measurements were taken. Dynamic generalised wind climates are preferred over static because they reflect changes directly.

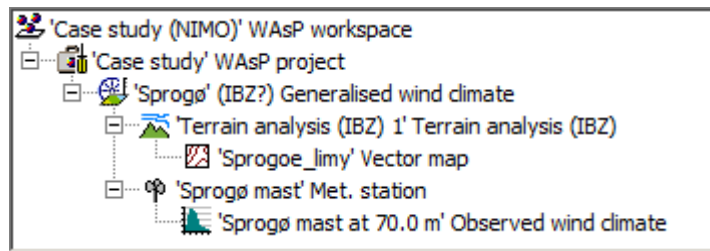


Figure 15. The observed wind climate is always child of a met. station, which is always child of a generalised wind climate (wind atlas).

6.3 WASP application

WASP application is the transformation of the generalised wind climate (wind atlas) to the predicted wind climate at one or more sites, such as those of the *turbine site*, *wind farm*, *reference site* or *resource grid* members of the WASP hierarchy. A typical WASP application as it appears in the WASP hierarchy is shown in Figure 16.

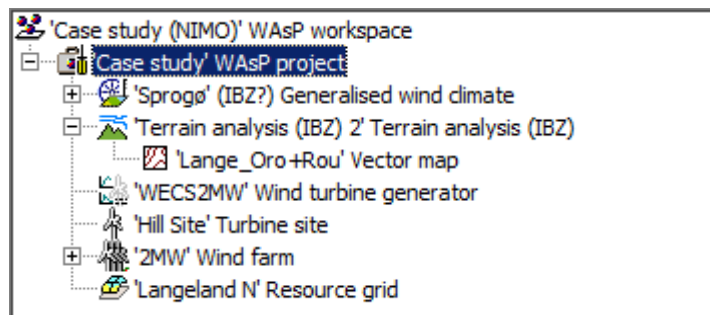


Figure 16. The generalised wind climate, terrain analysis with vector map, and wind turbine generator are inputs to the application; the turbine site, wind farm and resource grid contain the prediction outputs.

While this setup is the most common, it is also possible for the wind atlas member to be a child of any of the calculating members shown in Figure 16, including a turbine site group. In this way, more masts may be used at the same time for the predictions.

Wind farm

A wind farm consists of a number of wind turbines, which may be arranged in *turbine site groups*. The PARK wake model is invoked automatically for the wind turbines in a wind farm; however, two or more 1st-level wind farms in the hierarchy do not interact. So, all the wind turbines that should be part of a given wake calculation must be in the same (1st level) wind farm. The WASP wake model (PARK) was designed for small and medium-sized wind farms where the distances between turbines are larger than $3-4D$.

Reference site

The reference site member is used to relate wind farm power production to the wind speed and direction measured at a nearby mast, i.e. to establish a *wind farm power curve*.

Wind resource grid

The wind resource grid corresponds to a regular grid of wind turbines, but no wake calculations are done. The results for each site correspond to the free-stream values of the wind climate and wind resource. Remember, that the map requirements mentioned above should be fulfilled for all the sites in a resource grid.

6.4 Validation of the modelling

In general, predictions are based on data from only one set of instruments – anemometer and wind vane – on one mast. While this is sufficient to perform the calculations and get some results, additional instruments on the same mast – and/or on another nearby mast – add significant value to a wind farm project.

The vertical wind profile

If wind speeds have been measured at two or more heights along the mast, it is possible to investigate whether WAsP is able to model the vertical wind profile at the site. This comparison may be used to adjust the terrain descriptions and also (sometimes) the atmospheric stability settings. The top anemometer is almost always used as the reference level because flow distortion is the least here. The procedure is then:

1. Use the observed wind climate (OWC) from the reference anemometer to calculate the generalised wind climate (GWC).
2. Insert a *Turbine site* in the map at the location of the meteorological mast.
3. Set the calculation height to the height of the reference anemometer.
4. Update all calculations (right-click menu or press the F9 function key).
5. Select the *Turbine site* and go to **Tools > Utility scripts** menu.
6. Invoke the “Turbine site vertical profile (Excel)” script.

MS Excel will now start and show WAsP predictions for several levels between 5 and 100 m a.g.l. at the site of the mast:

	A	B	C	D	E	F	G	H	I	J	K	L	M	N
1	Vertical wind profile report for 'sample mast'													
2	Produced on 18-Jan-10 at 21:49:01 by licenced user: Niels G Mortensen, Risø DTU, Denmark using WAsP version: 10.00.0172													
3														
4														
5														
6	Height a.g.l. [m]	Wind speed [m/s]												
7	All	1	2	3	4	5	6	7	8	9	10	11	12	
8	5	4.017342	3.437093	3.385987	2.959598	2.747965	2.92288	3.653958	4.233381	4.954257	4.010661	4.404575	4.879427	3.673184
9	10	4.778338	4.108764	4.047634	3.538049	3.315913	3.495979	4.36762	5.050647	5.833756	4.791917	5.226694	5.761702	4.389956
10	15	5.22339	4.501592	4.434642	3.876382	3.648389	3.831076	4.784868	5.528591	6.348233	5.248875	5.707489	6.27756	4.809092
11	20	5.539163	4.780331	4.709351	4.116523	3.884345	4.068764	5.080805	5.867702	6.713354	5.573218	6.048628	6.643468	5.1064
12	25	5.784071	4.996504	4.922334	4.30271	4.067426	4.25315	5.310397	6.130723	6.996489	5.824692	6.313185	6.927314	5.337041
13	30	5.98417	5.173143	5.096429	4.454902	4.217036	4.403745	5.497878	6.345604	7.227928	6.030244	6.529345	7.159145	5.525425
14	35	6.191618	5.359593	5.280247	4.615584	4.373329	4.562576	5.695744	6.573075	7.459208	6.247375	6.752895	7.390657	5.724256
15	40	6.371313	5.521091	5.439489	4.75477	4.508734	4.700157	5.867142	6.77013	7.659561	6.435465	6.946542	7.591197	5.89649
16	45	6.529812	5.663546	5.579951	4.877542	4.628196	4.821514	6.018316	6.943915	7.836272	6.601378	7.117339	7.768096	6.048408
17	50	6.671567	5.790936	5.705569	4.987356	4.73507	4.930031	6.153491	7.099325	7.994325	6.749775	7.270115	7.92628	6.18423
18	55	6.822623	5.928301	5.841008	5.105746	4.849542	5.047028	6.299309	7.267208	8.158498	6.909879	7.432631	8.090635	6.330742
19	60	6.96054	6.053701	5.964658	5.21383	4.954065	5.153837	6.432426	7.420467	8.308382	7.056045	7.580996	8.24068	6.464495
20	65	7.087402	6.169053	6.078401	5.313255	5.050237	5.252095	6.554883	7.561452	8.446251	7.190507	7.717474	8.378715	6.587537
21	70	7.20486	6.275863	6.18372	5.405313	5.139289	5.343059	6.668264	7.691994	8.573903	7.315	7.84384	8.506509	6.701455
22	75	7.351367	6.410903	6.317372	5.521668	5.250849	5.458055	6.811697	7.857915	8.727277	7.473113	8.001231	8.6601	6.846293
23	80	7.488419	6.537225	6.442396	5.630515	5.355222	5.565618	6.94586	8.013122	8.870749	7.621028	8.148458	8.803776	6.981787
24	85	7.617153	6.655885	6.559839	5.732759	5.45328	5.666661	7.071886	8.158912	9.005518	7.759967	8.28676	8.938731	7.10906
25	90	7.738529	6.767755	6.670567	5.829155	5.545835	5.761923	7.190705	8.296375	9.132585	7.890965	8.41715	9.065975	7.229061
26	95	7.85335	6.873582	6.775311	5.92034	5.633663	5.852029	7.3031	8.426399	9.25278	8.014885	8.540487	9.186337	7.34256
27	100	7.962283	6.973976	6.874671	6.006847	5.717021	5.937517	7.409725	8.549753	9.36681	8.132438	8.657498	9.300525	7.450245
28														
29														
30														
31	Height a.g.l. [m]	Power density [W/m ²]												
32	All	1	2	3	4	5	6	7	8	9	10	11	12	
33	5	90.67463	57.6144	70.63794	50.56802	28.77478	43.7169	58.40134	92.96373	140.7464	88.46982	109.341	133.9559	74.82545
34	10	140.9604	89.61904	107.338	76.58202	46.10551	66.727	92.35217	145.845	217.8561	137.5537	169.5371	209.1899	115.7008
35	15	177.3518	113.0136	133.4338	94.98447	58.99471	83.26733	117.3431	184.5091	273.61	173.4721	213.5798	263.7581	145.4858
36	20	206.9046	131.8631	154.6662	110.0923	69.44804	96.4274	137.5501	215.7278	318.716	202.3028	248.7251	307.9539	169.1701

Figure 17. Results of running the “Turbine site vertical profile (Excel)” script in WAsP are shown in MS Excel. The “All” column is the omni-directional wind profile; sector-wise wind profiles (here, 1-12) are also calculated.

Column A contains the height above ground level, column B the total (omni-directional) mean wind speed predicted by WAsP for the different heights. Columns C to N show the sector-wise wind speed profiles. The vertical profiles of power density are given below the wind speed profiles.

Plot columns A and B to obtain the wind speed profile graph; then plot the measured mean wind speeds from any other level at the mast with symbols, in order to compare the WAsP-predicted profile to the measurements, see Figure 18 below. Measurements at all levels should of course refer to the same period of time.

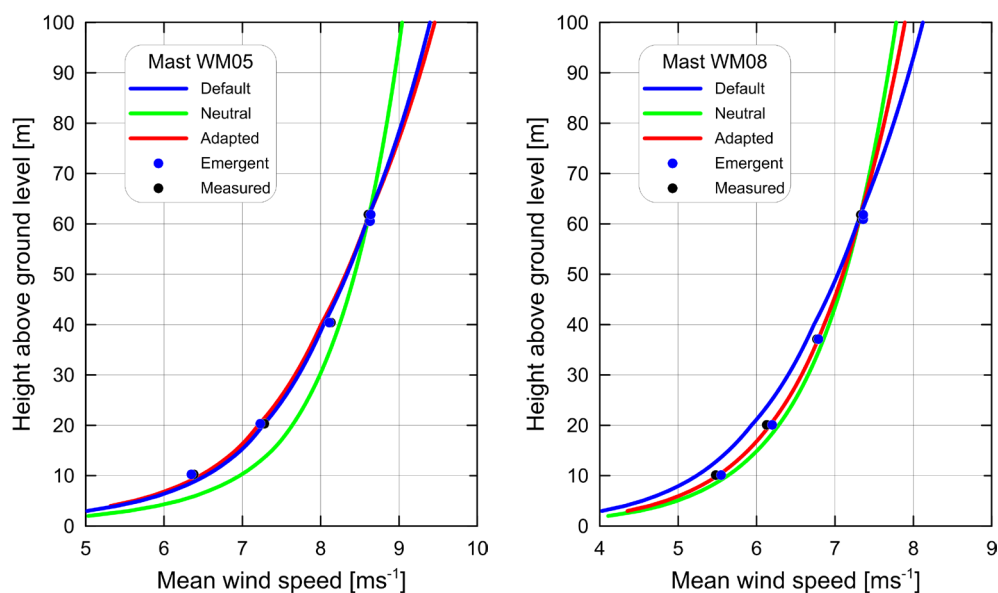


Figure 18. Measured and modelled vertical wind profiles at two sites in South Africa (data courtesy of the WASA project). The blue profile was modelled using the default setup of WAsP 11; the green profile is a strictly neutral (logarithmic) wind profile, and the red profile has been adapted to the local conditions by changing the heat flux values in WAsP slightly.

The wind speed profile graph may now be adjusted by adjusting the terrain descriptions, i.e. the roughness length map and the elevation map. If these are thought to be reliable, the wind profile can further be tweaked a bit by changing the heat flux values in the *Profile model* tab of the *Generalised wind climate* window. In Figure 18, the measured wind profile at mast WM05 is modelled well using the default heat flux values; whereas the measured wind profile at mast WM08 is much closer to neutral conditions. Here, the mean heat flux value was changed from -40 to -10 W m^{-2} in order to get a good model description of the observed wind profile.

Note, that the wind speed measurements will rarely fit exactly to the wind speed profile, partly because the lower levels will always be influenced by flow distortion from the mast itself. In order to avoid this, one could model the wind speed profile in certain sectors only, where flow distortion is expected to be small. However, in this case there is a risk that these data are not representative of the average, annual site conditions.

Cross predictions between masts

If wind speed and direction have been measured at two or more masts within the wind farm site – or within the region in which the regional wind climate is assumed to be similar – it is possible to validate to what degree WAsP is able to model the wind speed variations across the wind farm site. This information may be used to adjust the terrain descriptions and (sometimes) the atmospheric stability settings in order to improve the WAsP modelling of the wind farm site.

The top anemometers are almost always used as reference levels. The procedure is then:

- | Site | | 01 | 06 | 07 | 08 | 09 | 10 | Obs. |
|------|-----------|-----|-----|--------|-----|-----|--------|------|
| 01 | U [m/s] | 4.2 | 3.4 | 3.3 | 4.1 | 4.4 | 4.5 | 4.3 |
| 06 | U [m/s] | 5.6 | 4.6 | 4.4 | 5.7 | 6.1 | 6.3 | 4.6 |
| 07 | U [m/s] | 6.5 | 5.5 | 5.3 | 6.9 | 7.2 | 7.4 | 5.4 |
| 08 | U [m/s] | 6.9 | 5.2 | 4.8 | 6.2 | 6.8 | 7.2 | 6.2 |
| 09 | U [m/s] | 5.8 | 4.6 | 4.4 | 5.7 | 6.1 | 6.4 | 6.1 |
| 10 | U [m/s] | 5.6 | 4.4 | 4.1 | 5.2 | 5.5 | 5.6 | 5.7 |
| | | | | | | | | |
| | 0-10% | | | 10-25% | | | 25-40% | |

The cross predictions may be improved by adjusting the terrain descriptions, i.e. the roughness length map and the elevation map. If these are thought to be reliable, the cross prediction results may further be tweaked a bit by changing the heat flux values in the generalised wind climate window. In complex (steep) terrain – as in the example above – the cross predictions may be significantly influenced by the ruggedness of the terrain. In such cases, a ruggedness index (RIX) analysis should be carried out and one might try to find the relation between prediction error and ΔRIX or, better yet, run WAsP CFD.

This section covers three special types of terrain, where some adjustment of the WASP modelling is necessary or which violate the *operational envelope* of the WASP models.

Off-shore and near-shore conditions are generally within the operational envelope of the WASP models, but there are a few special issues to take into account. First of all, the wake decay constant, k , should be changed to offshore conditions (in the Settings tab of the Wind farm window); a value of $k = 0.05$ is recommended. Secondly, the roughness length of the sea surface – like any other water surface in WASP – should of course be set to 0.0 meters.

WasP expects to encounter elevation or roughness change lines within 20 km from any site; for sites far offshore this may not happen and the model may throw an error. This can be remedied by changing the model interpolation radius in the project parameters or by adding a combined elevation/roughness change line around wind farm site itself.

There are no standard procedures for modelling of tidal flats or sea ice; in such cases it is recommended to study the effects through sensitivity analysis. The influence of air density and the heat flux values are treated in the same way as over land.

Referencing short-term measurements at an offshore site to the long-term climatology may be difficult because of the lack of nearby long-term stations. Here, different kinds of reanalysis data or numerical wind atlas data may be used.

The default wake model in WAsP was not designed for very large offshore wind farms; the Fuga wake model is designed to handle such large arrays of wind turbines.

Forested terrain

WAsP does not contain specific models or procedures for modelling the wind flow in, above and around forests. Forests are simply specified in the vector map by roughness change lines. This works well when the forest is far away from the sites. If the meteorological mast or wind turbines are situated some distance within a forest, the effective modelling height (anemometer height or hub height) should be taken as the nominal height minus a *displacement length*. This displacement length – as well as the roughness length – is a function of the height of the trees and the stand density, but is often around 2/3 of the tree heights. Close to the forest edge, the flow may be quite complicated and WAsP cannot be expected to provide reliable results.

Steep terrain

WAsP was originally designed for gentle and not too steep terrain, in which the wind can follow the terrain surface, i.e. where the flow is *attached*. In steep terrain, where *flow separation* occurs, the flow modelling results will be biased. Flow separation occurs when the terrain slopes are larger than about 30% (17°) on a downwind slope to about 40% (22°) on an upwind slope (Wood, 1995).

WAsP evaluates the steepness of the terrain using the so-called *ruggedness index* RIX (Bowen and Mortensen, 1995), which is defined as the fraction of the terrain around a given site steeper than a critical slope (default value 30%). Complex or steep terrain is then when $RIX > 0$ for one or more sites. Analyses at wind farm sites suggest that the prediction error is proportional to the difference in ruggedness indices between the predicted site (wind turbine) and the predictor site (meteorological mast), see Figure 19.

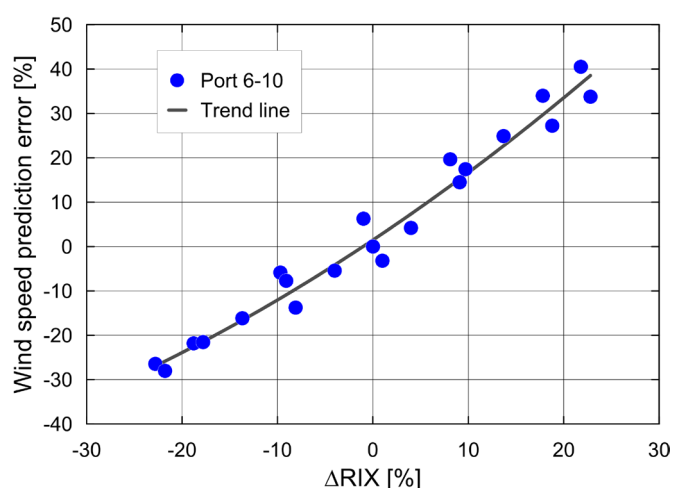


Figure 19. WAsP wind speed prediction error in per cent as a function of the difference in ruggedness indices, $\Delta RIX [\%]$, between the predicted site and the predictor site. Data points represent cross-predictions between 5 masts in N Portugal.

Qualitatively, WAsP will overestimate the mean wind speed significantly if the terrain around the predicted site (turbine site) has a larger fraction of steep slopes than the predictor site (met. mast). And, conversely, WAsP will underestimate the mean wind speed if the predicted site has a smaller fraction of steep slopes. If the two sites are quite similar, the prediction errors seem to be small – even when both sites are characterised by large ruggedness indices.

The relation between prediction error and difference in ruggedness indices has been used to correct WAsP predictions in steep and complex terrain, where $|\Delta RIX|$ is larger than about 5% (Mortensen *et al.*, 2006, 2008). Because of the empirical nature of the relation, this requires that the local slope of the fitted line in Figure 19 can be established; i.e. there must be two or more met. masts on the site. If $|\Delta RIX|$ is smaller than 5%, the correction scheme is rarely used.

Access to CFD-model (EllipSys) calculations has been implemented in WAsP version 11. It is strongly recommended to employ the CFD model in complex terrain; the RIX analysis will help determine when this is necessary.

7 Additional technical losses

The AEP calculated by WAsP is the so-called *potential annual energy production*, that can be produced by the wind farm when wake losses only have been taken into account. This, however, is not the production that will be fed into the electrical grid at the point of common coupling (PCC). Several additional (operational) losses will occur between the wind turbine rotor(s) and the PCC, these losses are summarised in Table 1.

Table 1. Additional technical losses, which are not taken into account by WAsP, may be grouped into the following five categories (European Wind Energy Association, 2009). Typical values for an onshore wind farm in NW Europe are listed too.

Loss category	Technical loss type	Typical value
1 Availability	<ul style="list-style-type: none"> turbine availability balance of plant availability grid availability 	97% > 99% > 99%
2 Electrical	<ul style="list-style-type: none"> operational electrical losses wind farm consumption 	1-2%
3 Turbine performance	<ul style="list-style-type: none"> power curve adjustments high-wind hysteresis control losses (SCADA) 	1-2%
4 Environmental	<ul style="list-style-type: none"> blade degradation and fouling degradation due to icing high and low temperature 	1-2%
5 Curtailments	<ul style="list-style-type: none"> wind sector management grid curtailment noise, visual and environmental 	Design dependent
6 Other	<ul style="list-style-type: none"> anything not treated above 	

These losses must be estimated for each project in question and subtracted from the AEP calculated by WAsP, in order to obtain the metered production at the PCC. Because the losses are given as a fraction of the WAsP result, these need to be factored together. The

additional losses vary greatly, but are often about 5-10% of the WAsP AEP in total. Evidently, it is paramount to know which production statistic is being used for a WAsP validation study. For wind farm economic analyses, the production fed into the electrical grid should be used; this is our best estimate of the AEP or the so-called P_{50} value.

Now that all the steps in the prediction procedure (using WAsP) have been described, it might be a good idea to revisit Section 1.4 and Figure 6. WAsP does not provide a result for each and every step automatically, but such results can of course be calculated or derived. What WAsP does provide directly is then:

- Site wind climates – the observed and generalised wind climates
- Wind farm gross yield – the ‘WAsP gross’ annual energy production
- Wind farm potential yield – the ‘WAsP net’ annual energy production

8 Modelling error and uncertainty

The difference between a WAsP prediction and the correct value is the *modelling error*. In general, the correct (or *reference*) value is not known exactly, even when predicting another cup anemometer or a wind turbine, where the wind speed or yield have been measured. This is because these numbers are also determined with some uncertainty. However, such measurements are likely close estimates of the reference values.

The modelling *uncertainty* (or *precision*) should always be estimated. The uncertainty is an estimate of the likely distribution of the modelling errors, and it is composed of all the uncertainties related to the entire assessment procedure. The different uncertainty factors tend to be random in nature and are often not correlated. In addition, the modelling results may be *biased*. The bias (or *trueness*) represents any systematic deviation of the modelling result from the reference value. Any biases should be estimated and possibly corrected for. Figure 20 illustrates the meaning of uncertainty, precision, and trueness (bias); *accurate* estimates have low uncertainty and trueness values.

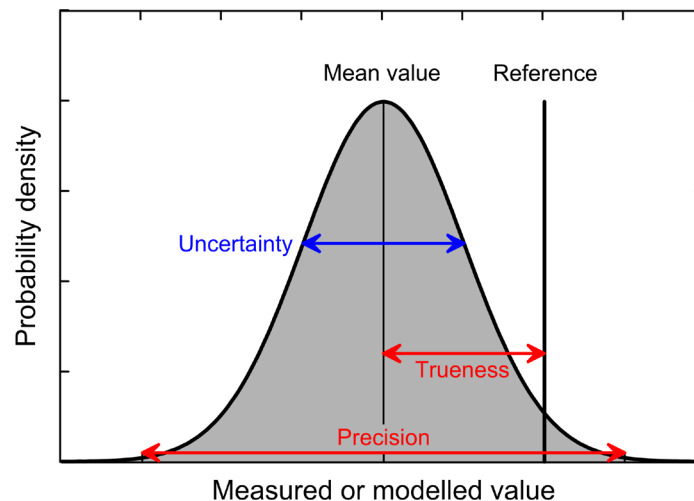


Figure 20. Modelling uncertainty and bias. The ‘Mean value’ might correspond to the WAsP prediction (P_{50}); the ‘Reference’ is the correct value we are trying to predict. The standard deviation of the normal distribution shown is 10% and the bias shown is 20%.

The normal distribution shown in Figure 20 can be plotted to show the exceedance probability as a function of the annual energy production, see Figure 21.

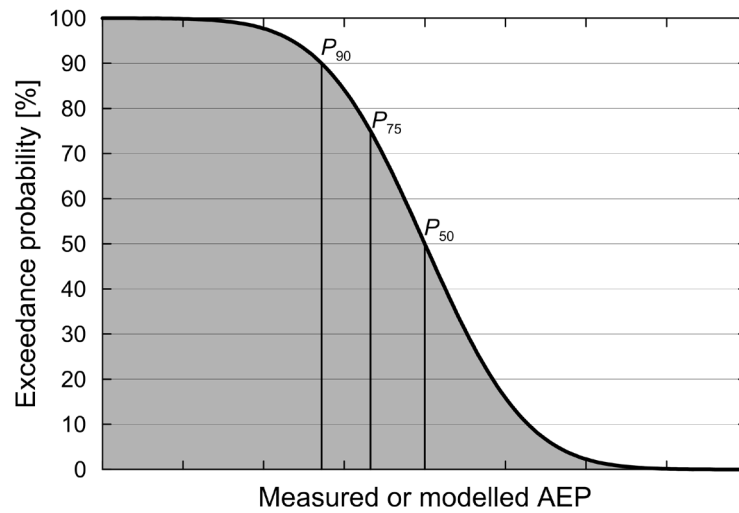


Figure 21. Exceedance probability curve corresponding to the normal distribution shown in Figure 20. The P_{50} -value corresponds to the mean value in Figure 20.

Also shown in Figure 21 are the P_{90} , P_{75} and P_{50} values, which correspond to exceedance probabilities of 90%, 75% and 50%, respectively. Different standard deviations of the normal distribution (different uncertainty estimates) will result in different exceedance curves. With a large standard deviation (uncertainty), the differences between the P_{90} , P_{75} and P_{50} values become large; with a small standard deviation the differences will be small, see Figure 22.

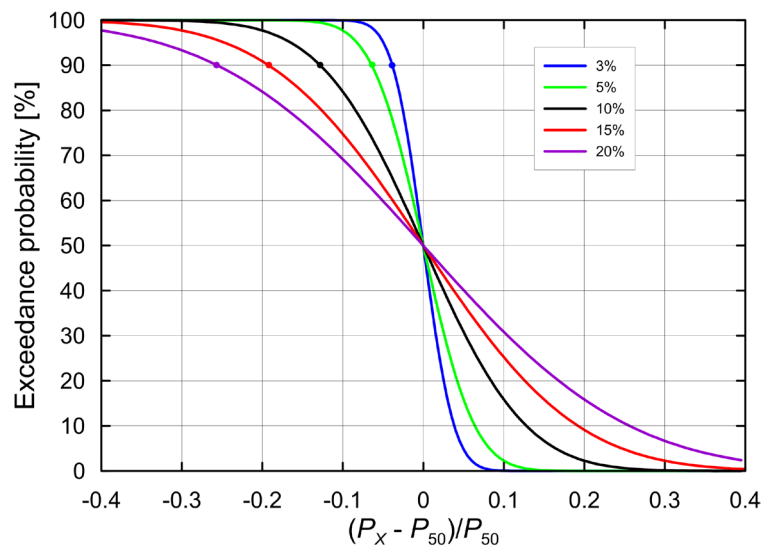


Figure 22. Exceedance probability curves corresponding to normal distributions with different standard deviations: 20, 15, 10, 5 and 3%, respectively. The steeper the central part of the curve, the smaller the standard deviation. The P_{90} values are indicated too.

8.1 Prediction biases

There are many examples of possible biases in a WAsP prediction, but they may be small and difficult to estimate and are often treated as simply adding to the uncertainty. As an example, mean wind speeds measured with a cup anemometer are inherently biased because of the behaviour of the instrument in a turbulent flow; however, these turbulent biases are often treated as part of the overall measurement uncertainty.

Large biases can occur in complex (steep) terrain where $|\Delta\text{RIX}|$ is larger than about 5%. Applying the IBZ model of WAsP in such terrain can lead to large biases depending on the ΔRIX values of the turbine sites. Here, the predictions should be corrected according to a RIX analysis or, better yet, the CFD model of WAsP should be used.

8.2 Sensitivity analysis

Sensitivity analysis (SA) is the study of how the variation (uncertainty) in the output of a mathematical model can be apportioned, qualitatively or quantitatively, to different sources of variation in the input of the model (Wikipedia, 2010). In other words, it is the process of systematically changing the input data and parameters in the WAsP modelling in order to determine the effects of such changes on the output; which in this case is the estimated annual energy production (AEP) of a wind turbine or a wind farm. Sensitivity analysis thus investigates the robustness and uncertainty of the microscale modelling.

Table 2. Comprehensive sensitivity analyses for a 70-m mast on a hill in Northern China.

Parameter	Input change	Change in predicted AEP @ h		
		75 m	100 m	125 m
U calibration	+1%	1.5%	1.4%	1.3%
Anemometer height	−1%	0.3%	0.3%	0.3%
Adapted atlas heights	standard $\rightarrow h$	0.9%	0.0%	1.8%
Direction offset	+10°	0.7%	0.2%	0.0%
Air density	−2.5%	−1.4%	−1.3%	−1.2%
Stability	\rightarrow neutral	−1.4%	−6.1%	−9.0%
Heat flux	+10 Wm ^{−2}	0.2%	1.1%	1.7%
BG roughness	half of 5 cm	0.4%	0.4%	0.2%
BG roughness	double of 5 cm	0.0%	−0.4%	−0.5%
Position of mast	± 10 m	0.2%	0.2%	0.1%
Elevation detail	SRTM 3 only	−0.2%	−0.6%	−0.8%

Table 2 shows results for a sample WAsP calculation in NE China: The changes in the predicted AEP at 75, 100 and 125 m a.g.l. when changing the inputs to the modelling. In this case, the uncertainty was minimised by using calibrated anemometers, adapting the wind atlas heights, adjusting the heat flux values, and adding details to the SRTM map.

8.3 Uncertainty estimation

The European Wind Energy Technology Platform (TPWind) recently proposed a ‘3% vision’, stating that “current techniques must be improved so that, given the geographic coordinates of any wind farm (flat terrain, complex terrain or offshore, in a region covered by extensive data sets or largely unknown) predictions with an uncertainty of less than 3% can be made concerning the annual energy production and other wind conditions”. This 3% vision is illustrated in Figure 23.

Also shown in Figure 23 is the result of a WAsP validation study, where actual wind farm productions from 20 operating wind farms were compared to the original WAsP predictions. The numerical wind atlas (NWA) data are from the Wind Atlas for Egypt (Mortensen *et al.*, 2005) and the CREYAP results from Mortensen *et al.* (2015).

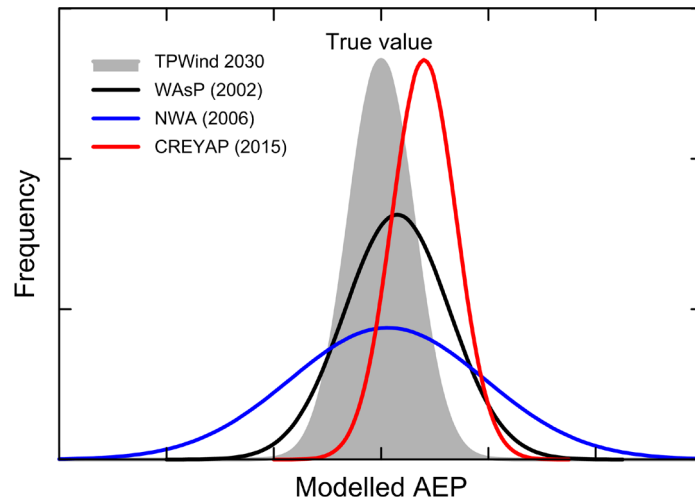


Figure 23. Sample AEP distributions: TPWind goal for 2030, WAsP validation study of operating wind farms, numerical wind atlas study, and industry benchmark study.

Unlike the technical losses described above, the sources of uncertainty have not been classified in a similar systematic way. The *EWEA Comparison of Resource and Energy Yield Assessment Procedures* (Mortensen *et al.*, 2012, 2015) show that a broad selection of significant players in the wind energy industry applies quite different classifications and evaluation practices. Some sources of uncertainty seem to be generally accepted, though the exact definition and calculation are not always clear. Commonly accepted sources of uncertainty are listed in Table 3; DNV KEMA (2013) has a slightly different table of uncertainty factors.

Table 3. Commonly used sources of uncertainty by category and type.

Uncertainty category	Uncertainty type	Typical values
1 Wind data	• wind measurements	2-5% on wind speed
	• long-term extrapolation	1-3% on wind speed
2 Future wind variability	• inter-annual variability	2-6% on wind speed
	• climate change	?
3 Spatial variation (flow modelling)	• vertical extrapolation	0-5% on wind speed
	• horizontal extrapolation	0-5% on wind speed
4 Power conversion	• power curve	5-10% on AEP
	• metering	0-2% on AEP
5 Plant performance and losses	• wake effects	0-5% on AEP
	• technical losses	0-2% on AEP
6 Other	• air density	0-2% on AEP

Every wind farm yield assessment report should contain an estimation of the uncertainty of the energy yield estimation. The total uncertainty on the energy yield prediction is usually calculated by applying the equation for an independent stochastic process to combine the main uncertainties. Only the main uncertainties are estimated and these are assumed to be Gaussian distributed. With these assumptions, it is also possible to calculate the exceedance statistics, i.e. find yield levels with a certain probability of those levels being exceeded. The aggregate uncertainty for the estimation of the yield of an onshore wind farm in Europe is often between 10 and 15% of AEP. An estimated uncertainty larger than 15% or lower than 10% should be highlighted and discussed.

9 Wind conditions and site assessment

WAsP can estimate the mean wind climate at all the sites in a wind farm – and anywhere else in the terrain. To estimate, say, the 50-y extreme wind speed and the turbulence intensity at the turbine sites in a wind farm take a bit more. In this chapter, a simple step-by-step introduction to WAsP Engineering and the Windfarm Assessment Tools is given, in order to derive the necessary results. Note, that the focus of course 46200 is on the IEC 61400-1 standard and not on the details of these software packages.

One estimate of the 50-y extreme wind speed may be derived from the measurements at the meteorological mast: here, the Climate Analyst can provide the *observed extreme wind climate*. This can be obtained by right-clicking **Results** and choose **Create an Oewc**, see Figure 24.

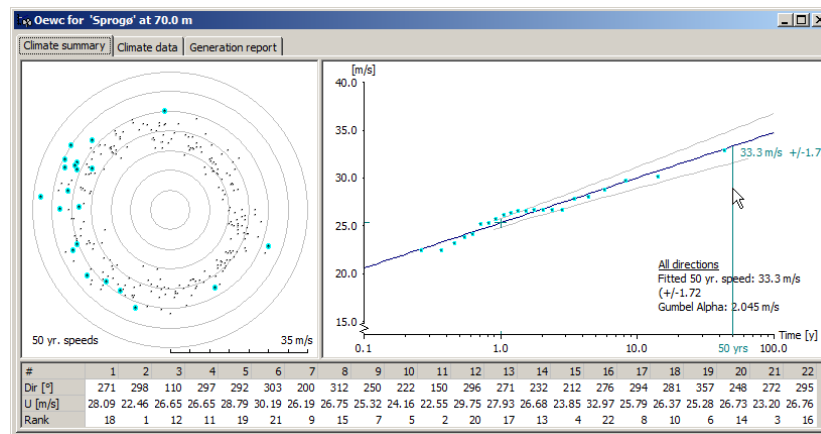


Figure 24. Sample observed extreme wind climate from Sprogø 1977-99; single events in a polar representation to the left and the extreme wind speed distribution with Gumbel fit to the right (data courtesy of Sund & Bælt). The 50-y extreme wind 70 m a.g.l. at this site is 33.3 ms^{-1} , cf. Figure 7 for information on the mean wind climate.

The turbulence intensity can be calculated from the measurements of wind speed and standard deviation of wind speed, see Figure 25.

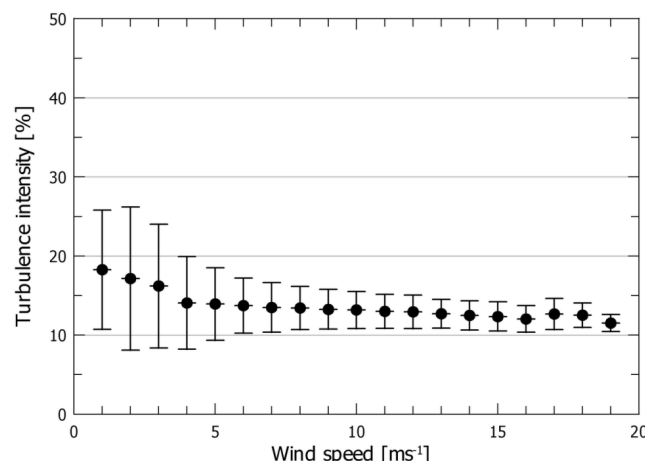


Figure 25. Observed turbulence intensities at a meteorological mast. The measurements have been binned in intervals of 1 ms^{-1} ; mean values and standard deviations of the turbulence intensities in each bin are shown.

However, if the mast is not at hub height or is situated in a terrain which is not similar to the terrain at the wind farm site, the observed extreme winds and turbulence intensities may not be representative of the turbine sites.

9.1 Extreme wind and turbulence intensity

It is possible to use *WAsP Engineering* to estimate the extreme winds and turbulence intensities at the turbine sites in the wind farm, without knowing every detail of the software or models. See the WAsP Engineering help file for more information.

First, you need to make a few input files to WAsP Engineering. In the Climate Analyst, you need to calculate and save the observed extreme wind climate:

1. Right-click **Results** and choose **Create an Oewc**
2. Right-click the Oewc and **Export to file...** it to an *.oewc file

In WAsP, you need to export the different site locations and the wind atlas to files:

1. Right-click the met. station and **Extract site location** to a *.wsg file
2. Right-click the wind farm and **Extract site locations** to a *.wsg file
3. Right-click the generalised wind climate and **Export to file...** Choose type *.lib

In WAsP Engineering, you need to set up a project for the wind farm:

1. From the **File** menu, choose **Create new project...**
2. Choose **Use Vector Map** and select the WAsP vector map for the project setup
3. Provide the **latitude** and **select an area** for the project
4. Define the flow **domain structure** according to the [recommendations given on the WAsP home page](#).
5. Right-click the **Sites** member and choose **Insert site locations from file**
6. Insert the met. station and the wind farm turbine sites in this way. The calculation height(s) of the sites should now be shown in the **Heights** pane.
7. From the **Insert** menu, choose **Observed extreme wind climate from file...** Select the *.oewc file that was exported from the Climate Analyst. And provide the met. mast coordinates.

Now, the basic WAsP Engineering project has been set up and you can do some calculations. For example, to estimate the extreme winds at the sites, do the following:

1. Right-click the parent object of the met. station and choose **Calculate a generalised extreme wind climate**. NB: This may be a lengthy calculation¹.
2. Left-click your wind farm, hub height and generalised extreme wind climate in the hierarchy in order to select objects for further calculation.
3. In the **Tools** menu, choose **Scripts** and then **Applied EWC report: 50 y winds for all sites and heights**.

Check the results in the MS Word file that opens; this will give you information about the 50-y extreme winds at the sites.

1) You can speed up extreme wind calculations in two ways: 1) Press **Edit | Project settings | Climate calculations** and modify the interpolation scheme, or 2) press **Edit | Re-define project domain** and reduce the flow model domain. Consider your choices carefully as the need for detail depends on the terrain.

9.2 IEC site assessment

To make a full IEC 61400-1 site assessment, a combination of WAsP and WAsP Engineering results need to be post-processed in the *Wind farm Assessment Tool* (WAT):

1. Left-click a group of turbines, the hub height of these turbines and the regional extreme wind climate in the hierarchy in order to select these for calculation.
2. In the **Tools** menu, choose **Prepare data for WAT**
3. Select the *.lib file you exported from WAsP
4. Select the appropriate wind turbine generator file (*.wtg or *.pow)
5. Choose **Display the results in Excel** and press **OK**

Check the results in the MS Excel file that opens; this will contain information about the 50-y extreme wind speed, terrain inclination, wind rose, Weibull A - and k -parameters, speed-up factor, wind direction deflection, wind shear exponent (α), turbulence intensity (u , v , and w components), standard deviation of wind speed and flow angle.

Windfarm Assessment Tool (WAT)

The WAT tool is needed to estimate the effective turbulence intensity:

1. Right-click on **Terrain Maps | Elevation grid** and save the map in Surfer format.
2. Save and close the Excel Workbook
3. Open WAT and select **File | New | Import WAsP/WEng data** to import data from the Excel Workbook and the wind turbine generator file².
4. Select turbine class and turbulence category according to the turbine certificate.
5. Select **Edit | Add Terrain data** and load the Surfer file.
6. Select an appropriate Wöhler exponent for the weakest part of the turbine, typically $m = 10$ for glass fibre blades.
7. Select **Wind farm overview | Flow conditions** and check whether all turbine sites obey IEC 61400-1 site assessment rules. Select individual sites and use **reports for selected site** to investigate specific problems.

The WAT tool can also be used for wind farm technical loss and uncertainty estimation.

References

- Badger, J., N.G. Mortensen and J.C. Hansen (2006). The KAMM/WAsP Numerical Wind Atlas – A powerful ingredient for wind energy planning. In: Proceedings CD-ROM. *Great Wall World Renewable Energy Forum and Exhibition*, Beijing, 23-27 October 2006. [PDF copy](#).
- Bowen, A.J. and N.G. Mortensen (2004). WAsP prediction errors due to site orography. Risø-R-995(EN). Risø National Laboratory, Roskilde. 65 pp. [PDF copy](#).
- Brower, M.C. [et al.] (2012). *Wind Resource Assessment: A Practical Guide to Developing a Wind Project*. John Wiley and Sons Inc., Hoboken, New Jersey. 280 p.

2) For a complex wind farm with more than one turbine type you can 1) organize the WAsP Engineering project in groups with similar turbines, 2) prepare WAT data for each group and hub height, and 3) import and merge group results in WAT.

DNV KEMA (2013). [Framework for the Categorisation of Losses and Uncertainty for Wind Energy Assessments](#). [Accessed on 23 November 2015]. [PDF copy](#).

European Wind Energy Association (2009). *Wind Energy – The Facts. A Guide to the Technology, Economics and Future of Wind Power*. Earthscan Ltd., London. 488 pp. ISBN 978184407710. Can be downloaded from www.wind-energy-the-facts.org.

Frank, H.P., O. Rathmann, N.G. Mortensen and L. Landberg (2001). The numerical wind atlas – the KAMM/WAsP method. Risø-R-1252(EN). 60 pp. [PDF copy](#).

Hansen, J.C., N.G. Mortensen, J. Badger, N.-E. Clausen and P. Hummelshøj (2007). Opportunities for wind resource assessment using both numerical and observational wind atlases – modelling, verification and application. In Proceedings of *Wind Power Shanghai 2007*, Shanghai (CN), 1-3 Nov 2007. (Chinese Renewable Energy Industry Association, Shanghai, 2007) p. 320-330. [PDF copy](#).

Landberg, L., N.G. Mortensen, O. Rathmann, L. Myllerup (2003). The similarity principle – on using models correctly. Proceedings of the *2003 European Wind Energy Conference and Exhibition*, Madrid (ES), 16-19 Jun 2003. (European Wind Energy Association, Brussels, 2003) 3 pp. [PDF copy](#).

Mortensen, N.G., J.C. Hansen, J. Badger, B.H. Jørgensen, C.B. Hasager, L. Georgy Youssef, U. Said Said, A. Abd El-Salam Moussa, M. Akmal Mahmoud, A. El Sayed Yousef, A. Mahmoud Awad, M. Abd-El Raheem Ahmed, M. A.M. Sayed, M. Hussein Korany, M. Abd-El Baky Tarad (2005). *Wind Atlas for Egypt, Measurements and Modelling 1991-2005*. New and Renewable Energy Authority, Egyptian Meteorological Authority and Risø National Laboratory. ISBN 87-550-3493-4. 258 pp.

Mortensen, N.G., A.J. Bowen and I. Antoniou (2006). Improving WAsP predictions in (too) complex terrain. In: Proceedings of the *2006 European Wind Energy Conference and Exhibition*, Athens, 27 Feb - 2 Mar 2006. (European Wind Energy Association, Brussels, 2006) 9 pp. [PDF copy](#).

Mortensen, N.G., A. Tindal and L. Landberg (2008). Field validation of the Δ RIX performance indicator for flow in complex terrain. *2008 European Wind Energy Conference and Exhibition*, Brussels (BE), 31 Mar - 3 Apr 2008. [PDF copy](#).

Mortensen, N.G., Z. Yang, J.C. Hansen, O. Rathmann and M. Kelly (2010). Meso- and Micro-scale Modelling in China: Wind atlas analysis for 12 meteorological stations in NE China (Dongbei). Risø-I-3072(EN). 71 pp. [PDF copy](#).

Mortensen, N.G., H. Ejlsing Jørgensen, M. Anderson, and K. Hutton (2012). *Comparison of resource and energy yield assessment procedures*. In Proceedings EWEA – The European Wind Energy Association. 10 pp. (paper), 15 pp. (presentation). [PDF copy](#).

Mortensen, N.G., D.N. Heathfield, O. Rathmann and Morten Nielsen (2014). *Wind Atlas Analysis and Application Program: WAsP 11 Help Facility*. Department of Wind Energy, Technical University of Denmark, Roskilde, Denmark. 366 topics. [CHM copy](#).

Mortensen, N.G., J.C. Hansen, M.C. Kelly, S. Szewczuk, E. Mabilile and E. Prinsloo (2014). *Wind Atlas for South Africa (WASA) – Observational wind atlas for 10 met. stations in Northern, Western and Eastern Cape provinces*. Department of Wind Energy, Technical University of Denmark (DTU) and Council for Scientific and Industrial Research (CSIR). April 2014, 63 pp. Also DTU Wind Energy Report-E-72. [PDF copy](#).

Mortensen, N.G., M. Nielsen, and H. Ejlsing Jørgensen (2015). *Comparison of Resource and Energy Yield Assessment Procedures 2011-2015: What have we learned and what needs to be done?*. In Proceedings of the EWEA Annual Event and Exhibition 2015. European Wind Energy Association (EWEA). [PDF copy](#).

Troen, I. and E.L. Petersen (1989). *European Wind Atlas*. Risø National Laboratory, Roskilde. 656 pp. ISBN 87-550-1482-8. [PDF copy](#).

Wood, N. (1995) The onset of separation in neutral, turbulent flow over hills. *Boundary-Layer Meteorology* **76**, 137-164.

Other resources

Energi- og Miljødata (2002). *Case studies calculating wind farm production*. Energi- og Miljødata, main report 26 pp. + 20 case studies 320 pp. In total 346 pp. Can be downloaded from [www.emd.dk](http://www.emd.dk/reports) ([reports](#) and [data](#)).

Measnet Procedure: *Evaluation of Site-Specific Wind Conditions*. Version 1, November 2009, 53 pp. Can be downloaded from www.measnet.com.

Recommended Practices for Wind Turbine Testing and Evaluation, “11. Wind speed measurement and use of cup anemometry”, IEA, Edition 1, second print, 1999.

IEC 61400: Wind turbine generator systems.

Irish Wind Energy Association (2012). *Best Practice Guidelines for the Irish Wind Energy Industry*. 87 pp. Can be downloaded from www.iwea.com

Wind Atlases of the World web site: www.wasp.dk/dataandtools

Wind Atlas for South Africa download site: wasadata.csir.co.za/wasa1/WASAData

Course software

The following software tools are available at the WAsP web site www.wasp.dk:

WAsP 11.4.25 ([WAsP-11-4-ReleaseE-Build25.msi](#))

WAsP Map Editor 11.3.3.360 ([MapEditor-11-3-ReleaseC-Build360.msi](#))

WAsP Climate Analyst 3.0.157 ([Waca-3-0-ReleaseG-Build157.msi](#))

WAsP Weibull Explorer 2009.06.19 ([Weibull2009-06-19.msi](#))

WAsP Engineering 3.1.118 ([WEng-3-1-ReleaseE2-Build118.msi](#))

Windfarm Assessment Tool 4.0.137 ([WindfarmAssessmentTool-4-0-ReleaseA-Build137.msi](#))

Fuga offshore wake model 2.9.6.1 ([Fuga-2-9-ReleaseA-Build6-64.exe](#))

Acknowledgements

The WAsP software is developed and maintained by a large team of scientists, software designers, programmers, and technical support staff at DTU Wind Energy and World in a Box Oy. Without this team effort there would be no software, no training courses and no course notes like these. The help and support of the WAsP team are gratefully acknowledged; Morten Nielsen specifically helped with the procedures and text in Section 9.

A WAsP best practice and checklist

This list of requirements, best practices and recommendations is not exhaustive, but is meant to provide a brief summary of some important considerations regarding WAsP modelling. More information is available in the WAsP help system and at www.wasp.dk.

Measurement programme

- ☐ Design measurement programme based on preliminary WAsP analysis
 - Use SRTM elevation and water body data + land cover from Google Earth
- ☐ Follow WAsP similarity principle as much as possible when siting the mast(s)
- ☐ Height of reference anemometer(s) similar to hub height (preferably $> 2/3 h_{\text{hub}}$)
- ☐ Optimum boom direction is oriented @ 90° (lattice) or @ 45° (tubular) to the prevailing wind direction.
- ☐ Deploy 2 or more masts for horizontal extrapolation and validation
- ☐ Deploy 2 or more masts if RIX and Δ RIX analyses are required
- ☐ Deploy 2 or more levels on masts for wind profile analyses and validation
- ☐ Deploy 2 or more levels on masts for redundancy in instrumentation
- ☐ Measure temperature (@ hub height) and pressure for air density calculations
- ☐ Are anemometers calibrated according to international/traceable standards?

Wind data analysis

- ☐ Collect required information, e.g. by filling out a WAsP Data Description Form
- ☐ All fields in Climate Analyst protocol editor should correspond to data spec's
- ☐ Plot and inspect time traces of all meteorological measurements
- ☐ Visual inspection of time-series – in particular reference wind speed and direction
- ☐ Visual inspection of polar scatter plot – any patterns or gaps?

Observed wind climate

- ☐ Use an integer number of whole years when calculating the OWC
- ☐ Check Weibull fit: is power density discrepancy $< 1\%$?
- ☐ Check Weibull fit: is mean wind speed discrepancy $< \text{a few per cent}$?
- ☐ Check within context of long-term wind climate (MCP)

Elevation map(s)

- ☐ Size of map: should extend at least several (2-3) times the horizontal scale of significant terrain features from any site – meteorological mast, reference site, wind turbine site or resource grid point. This is typically 5-10 km.
- ☐ Coordinates and elevations must be in meters
- ☐ Set map projection and datum in the Map Editor
- ☐ Add spot heights within wind farm site; interpolate contours if necessary
- ☐ High-resolution contours around calculation sites: contour interval ≤ 10 m
- ☐ Low-resolution contours away from calculation sites: contour interval ≥ 10 m
- ☐ Non-rectangular maps are allowed (circular, elliptic, etc.)
- ☐ Check range of elevations in final map

Roughness/land cover map(s)

- ☐ Size: map should extend at least $\max(150 \times h, 10 \text{ km})$ from any site – meteorological mast, reference site, turbine site or resource grid point.
- ☐ Coordinates and roughness lengths must be in meters
- ☐ Set map projection and datum in the Map Editor
- ☐ Set roughness length of water surfaces to 0.0 m!

- ☐ Check range of roughness length values in final map
- ☐ Map date should correspond to modelling scenario (met. mast or wind farm) – use two maps in hierarchy if necessary.
- ☐ Check for dead ends and cross points – and edit map as needed
- ☐ Check consistency of roughness values – there must be no LFR-errors!

Sheltering obstacles

- ☐ Is site closer to obstacle than 50 obstacle heights and height lower than about 3 obstacle heights?
- ☐ If yes to both, treat as sheltering obstacle; if no, treat as *roughness element*

WAsP modelling – site visit

- ☐ Go on a site visit! Use e.g. the WAsP Site/Station Inspection Checklists
- ☐ Print and bring the WAsP forms for recording the necessary information
- ☐ Bring GPS and check projection and datum settings – change if required
- ☐ Determine coordinates of all masts, sites, landmarks and other characteristic points on site.
- ☐ Bring sighting compass and determine boom directions and check wind vane calibration.
- ☐ Take photos of station and surroundings (12 × 30°-sector panorama)
- ☐ Download GPS data and photographs to PC as soon as possible (daily)

WAsP modelling – parameters

- ☐ Wind atlas structure: roughness classes should span and represent the site conditions.
- ☐ Wind atlas structure: standard heights should span and represent the project conditions.
- ☐ Adjust off- & on-shore mean- and RMS-heat fluxes values to site conditions (*caution!*)
- ☐ Ambient climate: Set air density to site-specific value (WAsP 10 only)

WAsP modelling – analysis and application

- ☐ Get site-specific (density, noise, ...) wind turbine generator data from the wind turbine manufacturer.
- ☐ Within forest: effective height = nominal height minus displacement length
- ☐ Complex or steep terrain is when $RIX > 0$ for one or more sites (terrain slope angles $> 17^\circ$ or 30%).
- ☐ Make RIX and ΔRIX analyses if $RIX > 0$ for any calculation site

WAsP modelling – offshore

- ☐ Roughness length of sea (and other water) surfaces: set to 0.0 m in WAsP!
- ☐ Add combined elevation/roughness change line around wind farm site
- ☐ Change wake decay constant to offshore conditions

WAsP modelling – sensitivity analyses and uncertainties

- ☐ Sensitivity of results to background roughness value and other important parameters.
- ☐ Identify and try to estimate the main uncertainties
- ☐ Estimate technical losses and uncertainty for calculation of net AEP @ PCC

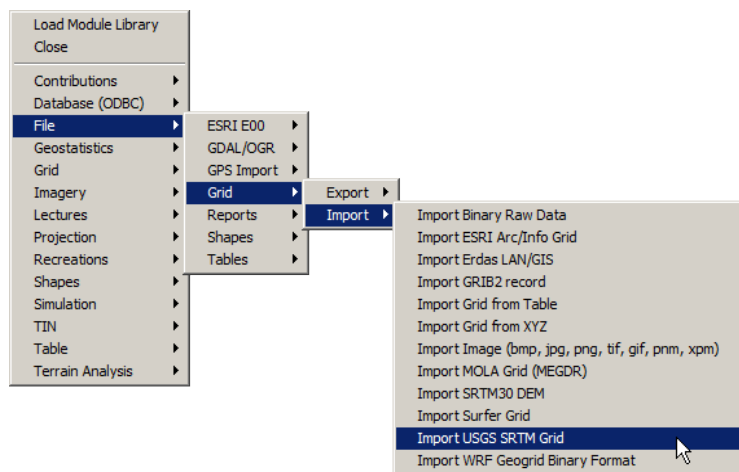
B Note on the use of SAGA GIS

The WAsP Map Editor now supports direct import of SRTM elevation and coastline data; therefore it is not necessary to use SAGA GIS (or similar software) for this task. However, this GIS tool may still come in handy for processing other elevation data sets in grid format. This section contains a brief guide to making such vector maps, using the SRTM data as an example.

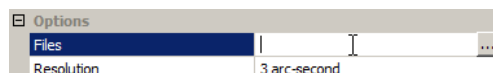
SAGA (System for Automated Geo-scientific Analyses) is a GIS system developed by University of Göttingen; the home page is www.saga-gis.org. SAGA GIS can be used to make WAsP height contour (vector) maps from different kinds of gridded (raster) data. SAGA is a Free Open Source Software (FOSS).

Processing an SRTM grid for WAsP use

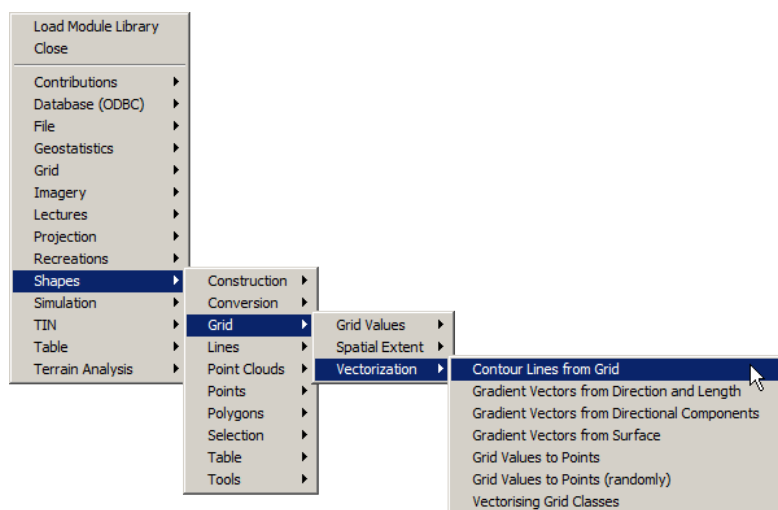
SRTM elevation data can be downloaded from dds.cr.usgs.gov/srtm/ (version 2.1) or e4ftl01.cr.usgs.gov/SRTM/ (version 3). Once you have downloaded and unzipped a $1^{\circ} \times 1^{\circ}$ tile, import the grid from the **Modules** menu:



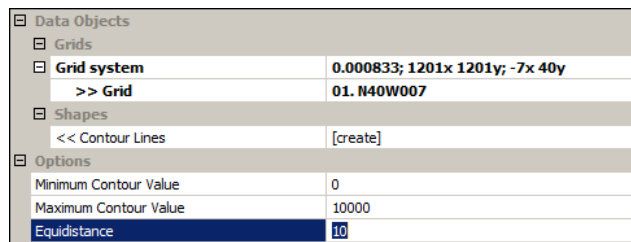
Left-click in the white field next to **Files** and enter or select the grid file name (*.hgt):



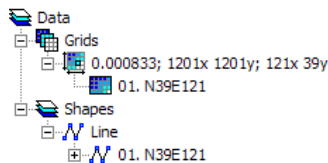
Make the height contours from the **Modules** menu, selecting the range and contour interval:



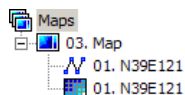
Set the grid system and contour interval in the **Contour lines from grid** window:



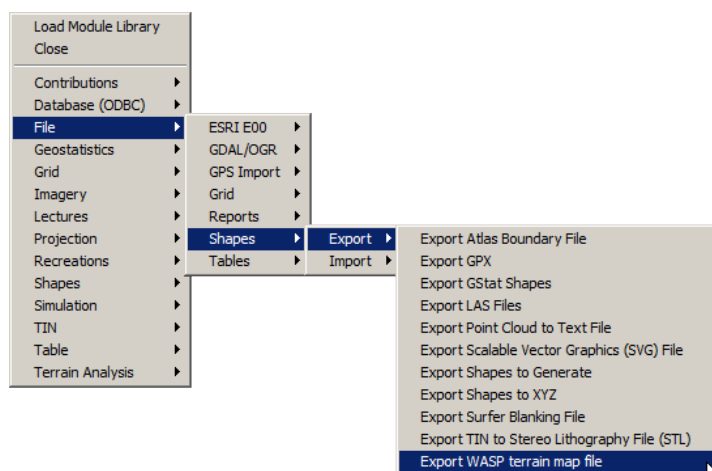
The **Data** workspace (**Tree view**) should now look something like this:



where the **Grids** section contains the SRTM grid and the **Shapes** section the contour lines. Double-click the grid, e.g. “01. N39E121”, to display it – same goes for the Shape “01. N39E121”. The **Maps** workspace could look something like this:



Finally, export the height contours to a WASP terrain map file from the **Modules** menu:



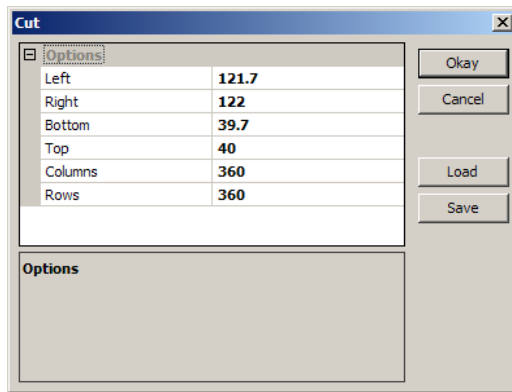
Each SRTM3 grid file covers a $1^\circ \times 1^\circ$ tile and contains 1201×1201 cells; an SRTM1 (US only) grid file also covers a $1^\circ \times 1^\circ$ tile but contains 3601×3601 cells. This is sometimes too much information to process or too large an area. The imported SRTM grid can be trimmed from the **Modules** menu:

Grid > Construction > Cutting [interactive]

First, show the grid in a **Map** window. Next, start the **Cutting** tool, select the grid system and grid and click **Okay**. Next, select the **Action** pointer (the black arrow) in the toolbar:

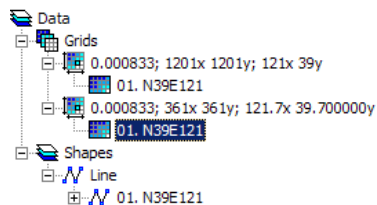


In the **Map** window, drag out (left click and drag) the approximate area for the sub-grid that you would like to extract. A **Cut** window now pops up:

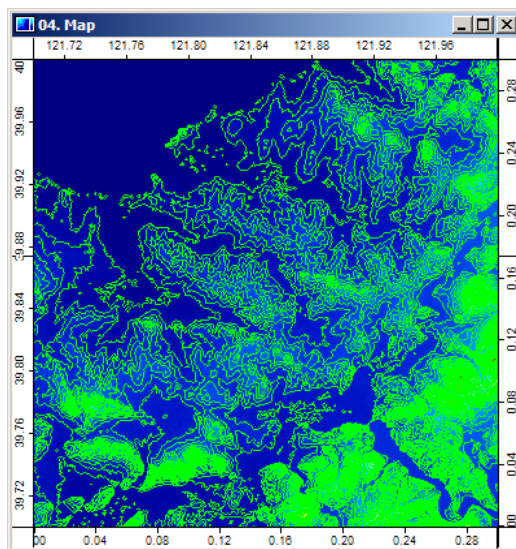


The sub-grid configuration may be changed here. Press **Okay** to continue. Finally, you must stop the interactive cutting module again by deselecting it in the **Modules** menu. You will not be able to use other modules before this interactive one has been shut down!

The **Data** workspace should now look something like this:



The new (sub)grid can be contoured and exported as a WAsP map file as described above.

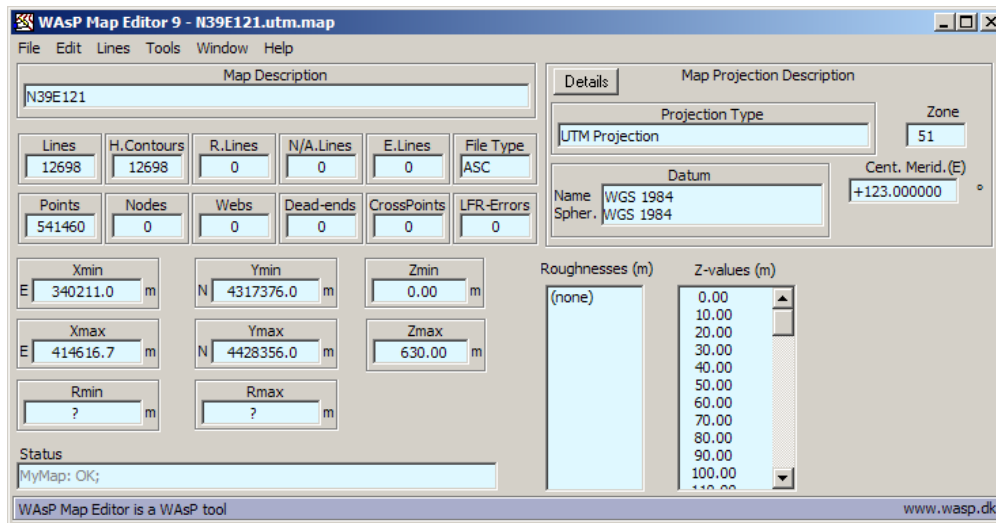


The coordinates of the exported WAsP map file are geographical latitude and longitude; these must be transformed to a metric coordinate system in the WAsP Map Editor:

1. **Open** the map in the Map Editor.
2. Click **Yes** to switch to geographic Lat-Lon coordinate system, and then **Ok** twice.
3. Next, select **Tools > Transform > Projection**.
4. Select **Global Projections > UTM projection** for the Projection Type.

5. Leave Datum as WGS 1984 (or change to other) global/local datum.
6. Press Ok to transform map coordinates.

The map editor window could now look something like this:



Processing an SWBD shape file separately

The *SRTM Water Body Data* (SWBD) set contains coastlines, lakes, and rivers in SHP format. When importing SRTM elevation data through the **File > Import from database > SRTM maps** in the Map Editor, the relevant coastlines, lakes and rivers will be downloaded as well. However, this information can also be downloaded separately from dds.cr.usgs.gov/srtm/version2_1/SWBD/. SAGA GIS can read such files, and so can the WAsP Map Editor.

Once you have downloaded and unzipped a $1^\circ \times 1^\circ$ tile, import the SHP file from the Map Editors **File > Import > ESRI shape file maps**. Note that the SWBD data contain lines along the tile boundaries; these lines are artefacts of the data set and have to be removed. The coastlines in a vector map should just end at the border of the map.

Bathymetry data

ETOPO1 is a 1 arc-minute global relief model of Earth's surface that integrates land topography and ocean bathymetry. It was built from numerous global and regional data sets, and is available in "Ice Surface" (top of Antarctic and Greenland ice sheets) and "Bedrock" (base of the ice sheets) versions. Historic ETOPO2v2 and ETOPO5 global relief grids are deprecated but still available. See [DEM Portal](#).

The General Bathymetric Chart of the Oceans (GEBCO) is made up of an international group of experts in ocean mapping. They develop and make available bathymetric data sets and data products, see [Gebco 2014](#).

The EMODnet Bathymetry portal is being developed by a European partnership. The partners combine expertise and experience of collecting, processing, and managing of bathymetric data together with expertise in distributed data infrastructure development and operation and providing OGC services (WMS, WFS, and WCS) for viewing and distribution, see [Portal for Bathymetry](#).

C Digitisation of the land cover (roughness) map

The land cover (roughness length) map can be digitised from a scanned paper map, aerial photograph or satellite imagery as described in the Map Editor Help file. However, there are a few other options; these are described below.

Digitising lines directly in Google Earth

You can also digitise roughness change lines directly in Google Earth:

1. Un-tick the **Layers | Terrain** feature in Google Earth so the terrain appears flat
2. Make a folder in the GE hierarchy to contain the roughness change lines
3. Right-click on this folder and select the **Add** part of the menu
4. Select **Path** (polyline) or **Polygon** (polygon, i.e. a closed line)
5. Start digitising the first land cover / roughness change line
6. Continue digitising land cover / roughness change lines
7. When done, right-click the folder and choose **Save Place As...**
8. Choose the GE *.kml (or *.kmz) format and save the roughness lines to a file

The kml / kmz file can now be imported directly into the Map Editor (**File > Import**):

1. First, **Import** the kml / kmz file
2. Change coordinate system in **Tools | Transform | Projection** from geographic to metric of choice.
3. Show the map graphic and set the properties for each line; several lines can be selected (left-click, Ctrl+left-click, ...) and changed in one operation.
4. Finally, **Save** or **Save As** the WAsP *.map file

Importing Google Earth imagery into WAsP and the Map Editor

Google Earth (GE) images can be imported into WAsP and the Map Editor:

1. Insert a Terrain analysis / Vector map into the WAsP hierarchy
2. Show the vector map in a new spatial view
3. Click the “Synchronise view with virtual globe” (GE) icon
4. Click the “Frame current view in virtual globe” icon (four purple markers)
5. Go to GE where four purple markers have now been inserted in the image
6. Select **Edit** and **Copy Image** in GE
7. Go back to WAsP
8. Right-click the vector map and select **Insert spatial image from clipboard...**

The GE image can now be seen in the spatial view of WAsP. To use it in the Map Editor:

1. Right-click the spatial image in the hierarchy and select **Export to file...**
2. Save the image to disk file. A scaling file is saved automatically as well
3. This image is saved with scaling information and can now be loaded as a background map in the Map Editor.

D The Global Wind Atlas

As described above, topographical information for WAsP modelling is available and can be downloaded from the internet. A similar development is now taking place for wind-climatological information. Different reanalysis data sets have been available for some time, but in coarse spatial resolutions. In 2015, DTU published the first global, high-resolution wind climate data set accounting for high-resolution topographical effects.

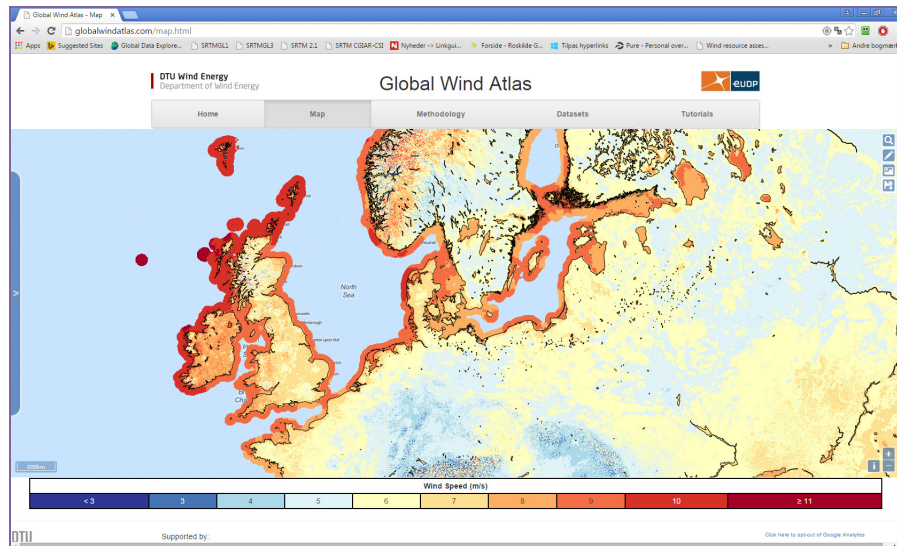


Figure 1. The [Global Wind Atlas](#) web interface provided by DTU Wind Energy.

The Global Wind Atlas data set and web tools were designed for aggregation, upscaling analysis and energy integration modelling for energy planners and policy makers. It is therefore not correct to use the data and tools for detailed wind farm siting and wind farm energy yield assessments. However, the data may be used for project preparation, design of the measurement campaign and similar; WAsP-compatible regional wind climate files (*.lib) can be downloaded anywhere in the world for this purpose.

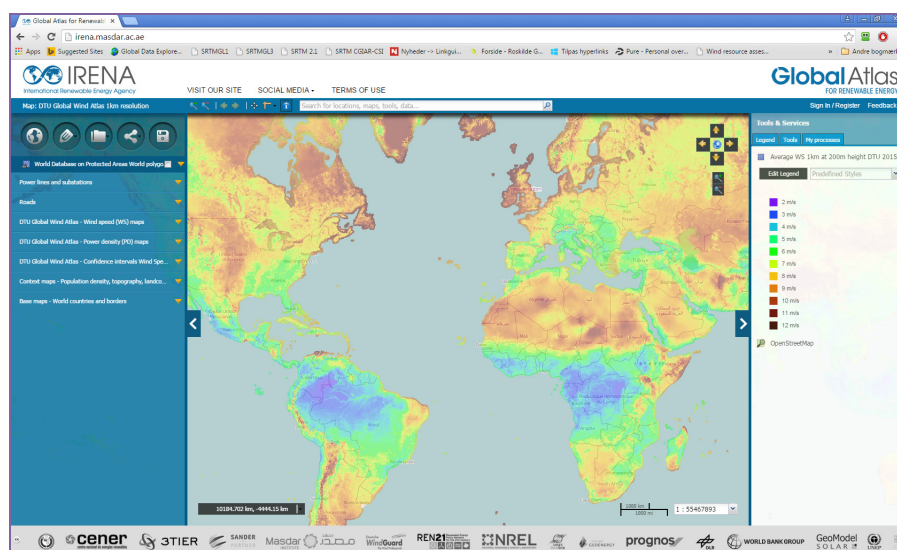


Figure 2. The Global Wind Atlas in IRENA's [Global Atlas for Renewable Energy](#).

DTU Wind Energy is a department of the Technical University of Denmark with a unique integration of research, education, innovation and public/private sector consulting in the field of wind energy. Our activities develop new opportunities and technology for the global and Danish exploitation of wind energy. Research focuses on key technical-scientific fields, which are central for the development, innovation and use of wind energy and provides the basis for advanced education at the education.

We have more than 240 staff members of which approximately 60 are PhD students. Research is conducted within nine research programmes organized into three main topics: Wind energy systems, Wind turbine technology and Basics for wind energy.

Technical University of Denmark

Department of Wind Energy

Frederiksborgvej 399

Building 118

4000 Roskilde

Denmark

Telephone 46 77 50 85

info@vindenergi.dtu.dk

www.vindenergi.dtu.dk