



## Copper deficiency can limit nitrification in biological rapid sand filters for drinking water production

Wagner, Florian Benedikt; Nielsen, Peter Borch; Boe-Hansen, Rasmus; Albrechtsen, Hans-Jørgen

*Published in:*  
Water Research

*Link to article, DOI:*  
[10.1016/j.watres.2016.03.025](https://doi.org/10.1016/j.watres.2016.03.025)

*Publication date:*  
2016

*Document Version*  
Peer reviewed version

[Link back to DTU Orbit](#)

### *Citation (APA):*

Wagner, F. B., Nielsen, P. B., Boe-Hansen, R., & Albrechtsen, H-J. (2016). Copper deficiency can limit nitrification in biological rapid sand filters for drinking water production. *Water Research*, 95, 280-288. <https://doi.org/10.1016/j.watres.2016.03.025>

---

### General rights

Copyright and moral rights for the publications made accessible in the public portal are retained by the authors and/or other copyright owners and it is a condition of accessing publications that users recognise and abide by the legal requirements associated with these rights.

- Users may download and print one copy of any publication from the public portal for the purpose of private study or research.
- You may not further distribute the material or use it for any profit-making activity or commercial gain
- You may freely distribute the URL identifying the publication in the public portal

If you believe that this document breaches copyright please contact us providing details, and we will remove access to the work immediately and investigate your claim.

1 **Copper deficiency can limit nitrification in biological rapid sand filters**  
2 **for drinking water production**

3 *Florian Benedikt Wagner<sup>a\*</sup>, Peter Borch Nielsen<sup>b</sup>, Rasmus Boe-Hansen<sup>b</sup>, Hans-Jørgen Albrechtsen<sup>a</sup>*

4 <sup>a</sup> *Department of Environmental Engineering, Technical University of Denmark, Miljøvej 113, 2800 Kgs. Lyngby, Denmark*

5 <sup>b</sup> *Krüger A/S, Gladsaxevej 363, 2860 Søborg, Denmark*

6 *\* Corresponding author. Tel.: +45 45251478. E-mail address: flowa@env.dtu.dk (F.B. Wagner).*

7

8 **Keywords**

9 Ammonium, Biological filtration, Copper, Drinking water, Nitrification, Nutrient limitations

10

11 **Abstract**

12 Incomplete nitrification in biological filters during drinking water treatment is problematic, as it compromises  
13 drinking water quality. Nitrification problems can be caused by a lack of nutrients for the nitrifying  
14 microorganisms. Since copper is an important element in one of the essential enzymes in nitrification, we  
15 investigated the effect of copper dosing on nitrification in different biological rapid sand filters treating  
16 groundwater. A lab-scale column assay with filter material from a water works demonstrated that addition of a  
17 trace metal mixture, including copper, increased ammonium removal compared to a control without addition.  
18 Subsequently, another water works was investigated in full-scale, where copper influent concentrations were  
19 below 0.05 µg Cu L<sup>-1</sup> and nitrification was incomplete. Copper dosing of less than 5 µg Cu L<sup>-1</sup> to a full-scale  
20 filter stimulated ammonium removal within one day, and doubled the filter's removal from 0.22 to 0.46 g NH<sub>4</sub>-N  
21 m<sup>-3</sup> filter material h<sup>-1</sup> within 20 days. The location of ammonium and nitrite oxidation shifted upwards in the  
22 filter, with an almost 14-fold increase in ammonium removal rate in the filter's top 10 cm, within 57 days of

23 dosing. To study the persistence of the stimulation, copper was dosed to another filter at the water works for 42  
24 days. After dosing was stopped, nitrification remained complete for at least 238 days. Filter effluent  
25 concentrations of up to  $1.3 \mu\text{g Cu L}^{-1}$  confirmed that copper fully penetrated the filters, and determination of  
26 copper content on filter media revealed a buildup of copper during dosing. The amount of copper stored on filter  
27 material gradually decreased after dosing stopped; however at a slower rate than it accumulated. Continuous  
28 detection of copper in the filter effluent confirmed a release of copper to the bulk phase. Overall, copper dosing  
29 to poorly performing biological rapid sand filters increased ammonium removal rates significantly, achieving  
30 effluent concentrations of  $< 0.01 \text{ mg NH}_4\text{-N L}^{-1}$ , and had a long-term effect on nitrification performance.

31

## 32 **1. Introduction**

33 During treatment of groundwater for drinking water production, ammonium is commonly removed through  
34 nitrification in biological rapid sand filters. Nitrification is a two-step process: ammonia oxidizing archaea  
35 (Martens-Habbena and Stahl, 2011) and bacteria oxidize ammonia to nitrite, which is further oxidized to nitrate  
36 by nitrite oxidizing bacteria (Prosser, 1989). The presence of nitrifying organisms in biological groundwater  
37 filters is well established (de Vet et al., 2011; Gülay et al., 2014; Lee et al., 2014).

38 Even though biological filters are commonly used to remove ammonium, nitrification is sometimes incomplete  
39 (Lee et al., 2014), leaving ammonium residues in the finished water. This is problematic for the drinking water  
40 quality, since incomplete nitrification can lead to biological aftergrowth in non-disinfected distribution systems  
41 (Rittmann et al., 2012), which can involve oxygen depletion, taste and odor problems, material corrosion, and  
42 accumulation of the toxic intermediate nitrite (Lytle et al., 2007). In chloraminated distribution systems,  
43 nitrification may decrease the disinfectant residual, thereby increasing bacterial regrowth potential and the risk  
44 of violating disinfectant residual standards (Zhang et al., 2009). In systems without disinfection during drinking  
45 water distribution, biologically stable drinking water is achieved by maintaining low nutrient levels in the

46 finished water. For example, the EU drinking water directive specifies a guideline for ammonium of 0.5 mg NH<sub>4</sub>  
47 L<sup>-1</sup>. The EU member states are allowed to establish stricter values; as for instance Denmark, where water works  
48 effluent guidelines for ammonium and nitrite are 0.05 mg NH<sub>4</sub> L<sup>-1</sup> (0.039 mg NH<sub>4</sub>-N L<sup>-1</sup>) and 0.01 mg NO<sub>2</sub> L<sup>-1</sup>  
49 (0.003 mg NO<sub>2</sub>-N L<sup>-1</sup>), respectively (Miljøministeriet, 2014).

50 To achieve low effluent concentrations of ammonium and nitrite, nitrifying microorganisms need an adequate  
51 amount of nutrients for growth and activity, to be available during water treatment in biological filters.

52 Otherwise, nitrification can be incomplete. For example lack of phosphorus can limit nitrification in groundwater  
53 treatment (de Vet et al., 2012). Besides phosphorus, nitrifiers also need trace metals for growth and activity,  
54 albeit required in comparably low concentrations. Earlier studies (Ensign et al., 1993; Pedroni et al., 1997)  
55 indicated the particular importance of copper for nitrification. The activity of the enzyme ammonia  
56 monooxygenase, which catalyzes the first step in the oxidation of ammonia to nitrite, was greatly increased *in*  
57 *vitro* under addition of copper (Ensign et al., 1993). Additionally, the loss of enzyme activity *in vivo* under  
58 addition of copper-selective chelators (e.g. allylthiourea), emphasizes the requirement of copper for ammonia  
59 monooxygenase (Sayavedra-Soto and Arp, 2011). Both ammonia oxidizing bacteria (Arp et al., 2007) and  
60 archaea (Leininger et al., 2006) have the genetic inventory to express this enzyme.

61 Processes such as copper complexation and adsorption in soil, copper sulfide formation under reducing  
62 conditions in anoxic groundwater, or low copper content in aquifer material (Adriano, 1986) can lead to  
63 decreased concentrations of copper in groundwater for drinking water production. During treatment in biological  
64 rapid sand filters, water phase concentrations can be further reduced due to copper sorption to iron-oxide  
65 (Benjamin et al., 1996) and manganese-oxide coated sand (Han et al., 2006), which may decrease the availability  
66 of copper for nitrifying microorganisms in the filters. Complexation with organic and/or inorganic ligands  
67 (Sylva, 1976), substrate diffusion limitations, and competition for nutrients by other microorganisms in the filter  
68 (de Vet et al., 2011) can further decrease copper availability.

69 At present, only little is known about copper deficiency in biological rapid sand filters for groundwater treatment  
70 and its importance for limitations of nitrification activity. Therefore, we investigated the effect of copper dosing  
71 on nitrification activity in potentially copper limited biological rapid sand filters. Specific questions were:

- 72 • Can dosing of copper to the influent water of biological filters, subject to incomplete nitrification,  
73 stimulate the removal of ammonium and nitrite?
- 74 • How fast does ammonium removal increase, and what is the corresponding magnitude of dosed  
75 copper? How persistent is the effect of copper dosing after it has been stopped?
- 76 • How are ammonium and nitrite removal patterns over filter depth affected by the dosing? What is  
77 the increase in removal capacity for ammonium at certain depths of a filter?

78 Two approaches were used in the study: (1) the potential of a trace metal mixture containing copper to stimulate  
79 ammonium removal was investigated employing a lab-scale column assay, and (2) the effect of controlled  
80 copper dosing on nitrification was examined with water and sand depth-sampling of two full-scale filters, in a  
81 280 day comprehensive study at a groundwater treatment plant.

82

## 83 **2. Materials and Methods**

### 84 2.1 *Lab-scale study with trace metals*

85 Potential stimulation of ammonium removal by addition of a broad mixture of trace metals was investigated in a  
86 lab-scale column assay (Tatari et al., 2013), under controlled conditions. The assay uses lab-scale columns,  
87 packed with full-scale filter media, and operated inside a refrigerator, in order to match the temperature at the  
88 water treatment plant. Complete mixing in the assay prevents stratification of nitrification activity in the columns  
89 (Tatari et al., 2013), which makes it possible to reproduce depth-specific nitrification kinetics of a full-scale filter  
90 media sample.

91 Filter media from a secondary biological rapid sand filter (filter number 4) at Langerød full-scale groundwater  
 92 treatment plant (GWTP), Denmark, was used. Anoxic groundwater with high alkalinity (Table 1) is treated at  
 93 this plant with simple stairs aeration and a de-ironing primary sand filter, followed by two secondary biological  
 94 filters in parallel. The secondary filters have been suffering from incomplete nitrification for several years. With  
 95 effluent concentrations of 0.32 mg NH<sub>4</sub>-N L<sup>-1</sup>, the filters remove only approx. 50 % of the influent ammonium  
 96 (Table 1).

97 **Table 1: Water quality characteristics along the treatment at groundwater treatment plants (GWTP)**  
 98 **investigated.**

	Langerød GWTP			Nærum GWTP		
	Raw water	Secondary filter influent	Secondary filter effluent	Raw water	Filter influent	Filter effluent (before Cu dosing)
Temp [°C]	9.1	9.3	9.3	9.2	9.6	9.6
pH [-]	7.4	7.6	7.7	7.5	7.7	7.6
Dissolved oxygen [mg L <sup>-1</sup> ]	0.3	10.2	9.1	<0.1	9.8	8.9
NH <sub>4</sub> <sup>+</sup> [mg N L <sup>-1</sup> ]	1.09	0.62	0.32	0.35	0.34	0.17
NO <sub>2</sub> <sup>-</sup> [mg N L <sup>-1</sup> ]	0.017	0.003	0.001	0.006	0.006	0.009
NO <sub>3</sub> <sup>-</sup> [mg N L <sup>-1</sup> ]	0.04	0.41	0.86	0.33	0.33	0.50
total Fe [mg L <sup>-1</sup> ]	3.00	0.13	0.01	2.25	2.07	0.01
Mn [mg L <sup>-1</sup> ]	0.12	0.02	0.01	0.09	0.09	0.01
H <sub>2</sub> S [mg L <sup>-1</sup> ]	0.02	n.m.	<0.02	<0.02	<0.02	<0.02
CH <sub>4</sub> [mg L <sup>-1</sup> ]	0.07	n.m.	<0.01	0.01	<0.01	<0.01
P [mg L <sup>-1</sup> ]	0.274	0.027	0.022	0.020	0.018	<0.01
Alkalinity [as mg HCO <sub>3</sub> <sup>-</sup> L <sup>-1</sup> ]	363	364	357	358	348	342
Ca [mg L <sup>-1</sup> ]	85	n.m.	83	113	n.m.	106
Cl <sup>-</sup> [mg L <sup>-1</sup> ]	56	n.m.	51	69	n.m.	66
SO <sub>4</sub> <sup>2-</sup> [mg L <sup>-1</sup> ]	8	n.m.	9	49	n.m.	44
NVOC [mg L <sup>-1</sup> ]	2.6	n.m.	2.5	2.1	n.m.	1.7

n.m.: not measured

99

100 Two lab-scale columns were packed with sand from 30 cm depth of the secondary filter (0.8 – 1.4 mm quartz)  
 101 and filter effluent water was used as influent substrate, enriched with ammonium (stock solution was prepared  
 102 from NH<sub>4</sub>Cl; analytical grade). In one of the columns, extra trace metals were added. Trace metals stock solution  
 103 (adapted from Verhagen and Laanbroek, 1991) was prepared from NiCl<sub>2</sub> · 6 H<sub>2</sub>O, CoCl<sub>2</sub> · 6 H<sub>2</sub>O, CuCl<sub>2</sub> · 2 H<sub>2</sub>O,

104 ZnCl<sub>2</sub>, Na<sub>2</sub>MoO<sub>4</sub> · 2 H<sub>2</sub>O, Na<sub>2</sub>WO<sub>4</sub> · 2 H<sub>2</sub>O, H<sub>3</sub>BO<sub>3</sub>, and Na<sub>2</sub>EDTA (all analytical grade). Concentrations of the  
105 extra trace metals added to the substrate of the column were: 6 µg Ni L<sup>-1</sup>, 6 µg Co L<sup>-1</sup>, 6 µg Cu L<sup>-1</sup>, 33 µg Zn L<sup>-1</sup>,  
106 10 µg Mo L<sup>-1</sup>, 18 µg W L<sup>-1</sup>, and 11 µg B L<sup>-1</sup>. The other column was a control without addition of metals.

107 The lab-scale columns were first operated for 54 h at the volumetric ammonium loading rate (ALR) of the full-  
108 scale system of 2.0 g NH<sub>4</sub>-N m<sup>-3</sup> filter material h<sup>-1</sup>. When ammonium concentrations in the effluent of the  
109 columns became lower than approx. 0.2 mg NH<sub>4</sub>-N L<sup>-1</sup>, loading was increased simultaneously for both columns,  
110 to avoid primary substrate limitations. After 54 h of operation, ALR was increased to 5.4 g NH<sub>4</sub>-N m<sup>-3</sup> h<sup>-1</sup>, and  
111 after 236 h, furthermore increased to 8.0 g NH<sub>4</sub>-N m<sup>-3</sup> h<sup>-1</sup>, until the experiment was stopped after 289 h.

112 Ammonium influent concentrations were 1.2 mg NH<sub>4</sub>-N L<sup>-1</sup> for the lowest ALR and 2.1 mg NH<sub>4</sub>-N L<sup>-1</sup> for the  
113 two higher ALRs. Effluent water was sampled and ammonium concentrations were analyzed. The effect of trace  
114 metals addition was quantified by comparing the volumetric ammonium removal rates (ARRs) of both columns,  
115 at the different ALRs. ALRs and ARR for the lab-scale study were calculated as described in Tatari et al.  
116 (2013), and have the units [g NH<sub>4</sub>-N m<sup>-3</sup> h<sup>-1</sup>], where m<sup>-3</sup> refers to the volume of filter material in the column.  
117 During the experiment, effluent pH, concentration of dissolved oxygen and temperature were monitored.

## 118 2.2 Long-term full-scale study of copper dosing

119 Subsequent to the lab-scale study, we carried out a full-scale investigation. Here only copper was dosed as trace  
120 metal, because of its specific importance for nitrification (Ensign et al., 1993; Sayavedra-Soto and Arp, 2011).  
121 The study lasted for 280 days and was conducted at Nærum GWTP, Denmark

### 122 2.2.1 Characteristics of the groundwater treatment plant

123 Nærum GWTP treats anoxic groundwater, abstracted from a limestone aquifer, also relatively high in alkalinity  
124 (Table 1), with stairs aeration prior to six identical single-stage biological rapid sand filters in parallel. Filters are  
125 identical in terms of filter material, backwash procedure, and construction and therefore hydraulic and substrate  
126 loading rates. Since de-ironing primary filtration is not used, the iron load to the biological filters at Nærum is

127 considerably higher than to the secondary filters at Langerød (Table 1). The plant runs intermittently for approx.  
128 12 h per day, with operating intervals of approx. 4 h, interrupted by 4 h breaks. During operation, total treatment  
129 flow is  $190 \text{ m}^3 \text{ h}^{-1}$ , resulting in around  $32 \text{ m}^3 \text{ h}^{-1}$  per filter. Dividing the volumetric flow rate per filter ( $32 \text{ m}^3 \text{ h}^{-1}$ )  
130 by the cross-sectional area of a filter ( $19.2 \text{ m}^2$ ), the hydraulic loading rate is calculated to be  $1.7 \text{ m h}^{-1}$ . The active  
131 layer (0.8-1.4 mm quartz; assumed active for removal of contaminants) of the filters is 0.6 m deep, and is  
132 followed by 5 layers of support material of different grain sizes, resulting in a total depth of 1.15 m. After  
133 treatment of  $2,500 \text{ m}^3$  of water per filter, filters are backwashed with a 6 minute air scour, followed by a water  
134 backwash at a rate of  $30 \text{ m h}^{-1}$  for 4.5 minutes. Ever since the filter material and piping were replaced in 2012,  
135 the GWTP has not been able to completely remove influent ammonium, having average effluent concentrations  
136 of around  $0.17 \pm 0.05 \text{ mg NH}_4\text{-N L}^{-1}$  (n=8, sampled in between July 2012 and March 2014).

### 137 2.2.2 *Experimental design*

138 Experiments were conducted with two full-scale filters. The first experiment (at Filter 4) aimed at determining  
139 how copper dosing affects nitrification over time and over filter depth. Copper was added to the filter for 117  
140 days, employing electrolysis with a rod-shaped copper electrode of 4 mm diameter. The electrode was installed  
141 in the box-shaped inlet structure of the filter. During filter operation, water passed the electrolysis system in the  
142 inlet structure, resulting in a continuous release and concentrations of  $0.050 - 1 \text{ } \mu\text{g Cu L}^{-1}$ . During non-operation  
143 intervals, copper was released into a volume of  $0.03 \text{ m}^3$  of water, confined by the inlet structure. When operation  
144 started, the copper enriched water volume flowed out and mixed with a water volume on top of the filter,  
145 resulting in pulse concentrations at the top of the filter of up to  $5 \text{ } \mu\text{g Cu L}^{-1}$ . Hence, copper was added both  
146 continuously during filter operation and as a pulse spike in the beginning of each operation interval. The  
147 decrease in length of the copper electrode was regularly measured, to determine the amount of copper released  
148 during the 117 day dosing period. Influent and effluent water from Filter 4 was analyzed on site for ammonium  
149 with an ammonium auto-analyzer (Hach Lange, AMTAX™ sc) at a frequency of 30 min, in order to capture the  
150 effect of copper dosing on ammonium removal. Water over depth of Filter 4 was sampled before copper dosing



151 (day 0), and subsequently after 7, 12, 23, 37, 57, 85, and 117 days with copper dosing, as well as 116 days after  
152 copper dosing was stopped.

153 A second experiment (at Filter 5) investigated the persistence of the effect of copper dosing on nitrification over  
154 filter depth after dosing was stopped. Copper was added to the filter for 42 days, employing the same method as  
155 previously described for Filter 4. Water samples over depth of the filter were collected before copper dosing (day  
156 0), and after 14 and 42 days with copper dosing. On day 42, the electrode was removed, and further water depth  
157 sampling was conducted at 14, 84, and 238 days after copper dosing was stopped. Furthermore, 11 influent and  
158 effluent water samples were taken during the dosing. After dosing was stopped, water was sampled every 2-3  
159 weeks for 238 days, resulting in 14 additional measurements, besides the depth samples.

160 For both experiments, the effect of copper dosing on nitrification was evaluated by comparing ammonium  
161 removal performance before dosing to performance with dosing. The ammonium loading rate to the filters at the  
162 plant was stable during the whole experimental period ( $0.50 \pm 0.01 \text{ g NH}_4\text{-N m}^{-3} \text{ h}^{-1}$ ); the start and respectively  
163 stop of copper dosing were therefore the only interventions made in the experiments, and changes in removal  
164 performance could thus be related to these interventions. Effluent ammonium concentrations of a third full-scale  
165 filter, which did not receive copper dosing, were additionally monitored as a control. Influent and effluent  
166 concentrations of dissolved oxygen, pH and temperature were monitored during both experiments.

### 167 *2.2.3 Water and media sampling*

168 Water over depth of the filters was collected through a PTFE tube, inside a supporting rigid stainless steel  
169 sampling probe. The probe was inserted into the filters at an angle of  $45^\circ$ , to depths of 5, 10, 20, 30, 40, 50, 60,  
170 75, 85, and 95 cm. Water was extracted with a peristaltic pump (Ole Dich, 101 ACR) at a rate of  $25 \text{ mL min}^{-1}$ .  
171 Influent water was sampled from the top of the filters and effluent water from a sampling tap. Sampling of a full  
172 water depth profile was completed within 1 h, during which the sampled filter was under full operation, at  
173 constant flow. Water depth samples were always collected at the same time within a filter cycle, one day after

174 filter backwash. Samples for ammonium and nitrite were immediately filtered through a sterile 0.2 µm filter  
175 (Sartorius, Minisart®), stored at 4 °C, and analyzed within 24 h; or frozen at -20 °C and analyzed within 2  
176 weeks. Influent and effluent samples for total copper were collected unfiltered and immediately acidified with 65  
177 % nitric acid (Merck, Suprapur®) to pH < 2, and stored at 4 °C until analysis. Samples for dissolved copper  
178 were filtered through a 0.2 µm filter before acidifying.

179 Core samples of filter media from 0 to 40 cm filter depth were collected from Filter 4 using an acrylic glass tube  
180 (Length: 60 cm, internal diameter: 5.2 cm), close to where water samples over filter depth were taken. The filter  
181 was backwashed just before sampling, and samples were collected one day before copper dosing started (day -1),  
182 after 22 and 116 days with copper dosing, as well as 115 days after dosing was stopped. Cores were subdivided  
183 into four 10-cm sections and sub-samples were transported to the laboratory for homogenization and further  
184 analysis of the metal content on the sand. Knowing the copper content on sand [mg Cu kg<sup>-1</sup> wet sand] and the  
185 sand wet bulk density of 1,733 kg m<sup>-3</sup>, the total amount of copper in the top 40 cm of the filter was calculated for  
186 the respective sampling days.

#### 187 2.2.4 Calculation of ammonium loading and removal rates

188 The volumetric Ammonium Loading Rate of the full-scale system at Nærum GWTP was calculated as  $ALR =$   
189  $Qc_{in}/A\Delta z$ , where  $Q$  is the filter flow rate,  $c_{in}$  is the influent concentration of ammonium,  $A$  is the filter cross  
190 section area, and  $\Delta z$  is the full filter depth (115 cm). The volumetric Ammonium Removal Rate was defined as  
191  $ARR = Q(c_{in}-c_{out})/A\Delta z$ , where  $c_{out}$  is the filter effluent concentration of ammonium. When referring to an ARR  
192 of a specific layer of the filter,  $c_{in}$  and  $c_{out}$  are the ammonium influent and effluent concentrations to and from  
193 this layer.  $\Delta z$  is the depth of that specific layer (e.g.: for calculating the ARR of the support material (60-115 cm  
194 depth),  $c_{in}$  and  $c_{out}$  are the ammonium concentrations at 60 and 115 cm depth, respectively, and  $\Delta z$  is 0.55 m).  
195 The unit of the ALR and the ARR is [g NH<sub>4</sub>-N m<sup>-3</sup> h<sup>-1</sup>], where m<sup>-3</sup> refers to volume of filter material.

196

197 2.3 *Analytical methods*

198 Ammonium and nitrite were determined with colorimetric methods according to APHA 4500-NH<sub>3</sub>-F and APHA  
199 4500-NO<sub>2</sub>-B (APHA, AWWA, WEF, 2005) with quantification limits of 0.01 and 0.002 mg N L<sup>-1</sup>, respectively.  
200 For the ammonium auto-analyzer monitoring influent and effluent ammonium concentrations of full-scale Filter  
201 4, the quantification limit was 0.02 mg NH<sub>4</sub>-N L<sup>-1</sup>.

202 To determine the content of metals on the filter material, sub-samples were digested in triplicates using  
203 microwave assisted acid digestion (Anton Paar; Multiwave 3000 SOLV – Microwave Reaction System) with  
204 HNO<sub>3</sub> and HCl, analogous to EPA method 3051A (USEPA, 2007a). Copper in water samples and the digest was  
205 determined by inductively coupled plasma mass spectrometry (Agilent Technologies, 7700 Series ICP-MS),  
206 analogous to EPA method 6020A (USEPA, 2007b), with a quantification limit of 0.050 µg Cu L<sup>-1</sup>.

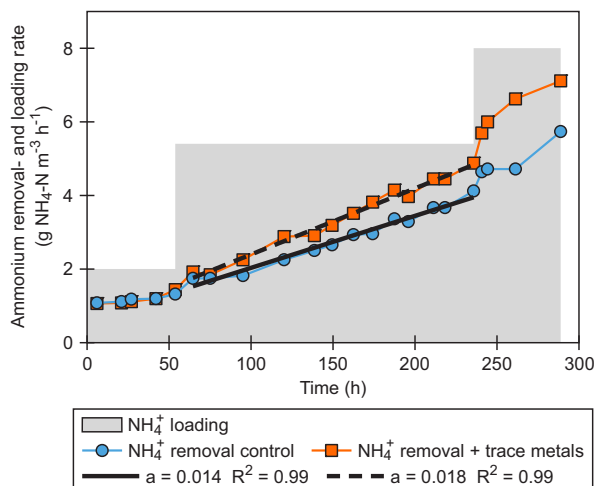
207 Dissolved oxygen and pH during all experiments were measured with a hand held meter (WTW, Multi 3430,  
208 with FDO<sup>®</sup> 925 and SenTix<sup>®</sup> 940 probes). Total alkalinity (as HCO<sub>3</sub><sup>-</sup>) was determined by the titrimetric method  
209 according to APHA 2320 (APHA, AWWA, WEF, 2005).

210

211 **3. Results and Discussion**

212 3.1 *Effect of trace metals on ammonium removal in the lab-scale study*

213 Volumetric ammonium removal rates (ARRs) of a lab-scale column with trace metal addition were compared to  
214 ARRs of a control, at different volumetric ammonium loading rates (ALRs) (Fig. 1). During the experiment,  
215 effluent concentration of dissolved oxygen was never lower than 4.5 mg L<sup>-1</sup> and influent water to the columns  
216 was well-buffered, with an average total alkalinity concentration of 6.1 meq HCO<sub>3</sub><sup>-</sup> L<sup>-1</sup>. The average pH was  
217 7.84. Nitrification limitation by the above factors was therefore excluded. The average temperature during the  
218 lab-experiments was 7.2 ± 1.4 °C.



219

220 **Figure 1: Lab-scale study with trace metals. Volumetric ammonium removal rate (ARR) for the control**  
 221 **column and for the column with additional trace metals, for the three different volumetric ammonium**  
 222 **loading rates (ALR) applied (shaded area). The depicted lines show linear regression fits to the removal**  
 223 **rate data when columns were operated at a loading rate of 5.4 g NH<sub>4</sub>-N m<sup>-3</sup> h<sup>-1</sup>. “a”: slope of regressions,**  
 224 **“R<sup>2</sup>”: coefficient of determination.**

225

226 At an ALR of 2.0 g NH<sub>4</sub>-N m<sup>-3</sup> h<sup>-1</sup> during the first 54 h of the experiment, ARR in the column with added trace  
 227 metals was on average 1.1 g NH<sub>4</sub>-N m<sup>-3</sup> h<sup>-1</sup>, and therefore not substantially different (< 10 %) from the control.  
 228 When the ALR was increased to 5.4 g NH<sub>4</sub>-N m<sup>-3</sup> h<sup>-1</sup> (between 65 and 236 h), the ARR was on average 17 %  
 229 higher for the column with added trace metals. Linear regressions for this period (n=13, R<sup>2</sup>=0.99) showed that  
 230 the ARR of the control increased with 0.014 g NH<sub>4</sub>-N m<sup>-3</sup> h<sup>-1</sup>, per hour. In contrast, the change over time for the  
 231 column with added trace metals was 0.018 g NH<sub>4</sub>-N m<sup>-3</sup> h<sup>-1</sup> per hour (Fig. 1), i.e. the ARR increased faster under  
 232 trace metal addition. At 236 h, the ARR of the column with trace metals was 4.9 g NH<sub>4</sub>-N m<sup>-3</sup> h<sup>-1</sup> and therefore  
 233 20 % higher than 4.1 g NH<sub>4</sub>-N m<sup>-3</sup> h<sup>-1</sup> in the control. During the ALR phase of 8.0 g NH<sub>4</sub>-N m<sup>-3</sup> h<sup>-1</sup>, ARR was on  
 234 average 22 % higher for the column with added trace metals, compared to the control. Nitrogen balances showed  
 235 that oxidized ammonium was present as nitrite and/or nitrate (data not shown).

236 The experiment demonstrated that a trace metal mixture, including copper, stimulated ammonium removal in a  
 237 lab-scale column, which was packed with sand from a full-scale biological filter. Influent concentration of

238 copper in the column with added trace metals was  $5.9 \mu\text{g Cu L}^{-1}$ , which was on the lower end of 5 - 100  $\mu\text{g Cu L}^{-1}$ ,  
239 <sup>1</sup>, reported to stimulate activity of *Nitrosomonas europaea* in pure culture (Zhang et al., 2009, and references  
240 therein). An even higher concentration of  $6,350 \mu\text{g Cu L}^{-1}$  was needed to stimulate the activity of the enzyme  
241 ammonia monooxygenase *in vitro* (Ensign et al., 1993). On the other hand, metals such as  $\text{Ni}^{2+}$ ,  $\text{Co}^{2+}$ , and  $\text{Zn}^{2+}$ ,  
242 tested at a concentration range of 1 and 5000  $\mu\text{M}$ , were not able to stimulate ammonium oxidation activity  
243 (Ensign et al., 1993). Inherently due to the different type of study (*in vitro*, with cell extracts), copper  
244 concentrations can hardly be compared to our study. However, due to the specific requirement of copper for  
245 nitrification (Ensign et al., 1993; Sayavedra-Soto and Arp, 2011), and because copper concentrations in the raw  
246 water of the GWTP of the following full-scale study were extremely low ( $< 0.050 \mu\text{g L}^{-1}$ ), the subsequent  
247 investigation focused on controlled dosing of copper only.

### 248 3.2 *Response of ammonium removal in full-scale to copper dosing*

249 Influent and effluent ammonium concentrations of Filter 4 at Nærum GWTP were monitored at high frequency  
250 with an auto-analyzer to study the full-scale filter's response to the dosing of copper. The GWTP was initially  
251 designed for a volumetric ammonium loading rate (ALR) to the filters of  $1.5 \text{ g NH}_4\text{-N m}^{-3} \text{ h}^{-1}$ , but was actually  
252 operated under a much lower ALR of  $0.5 \text{ g NH}_4\text{-N m}^{-3} \text{ h}^{-1}$ . Yet, the filters were not able to remove the decreased  
253 loading. Before dosing of copper, filter effluent ammonium concentrations were stable at approx.  $0.18 \text{ mg NH}_4\text{-}$   
254  $\text{N L}^{-1}$  (Fig. 2), equivalent to a volumetric ammonium removal rate (ARR) of  $0.22 \text{ g NH}_4\text{-N m}^{-3} \text{ h}^{-1}$ , and a removal  
255 efficiency of only 44 % of the applied load. Copper influent concentration to the filter was  $< 0.050 \mu\text{g total Cu L}^{-1}$   
256 <sup>1</sup> (Table 2).

257

258

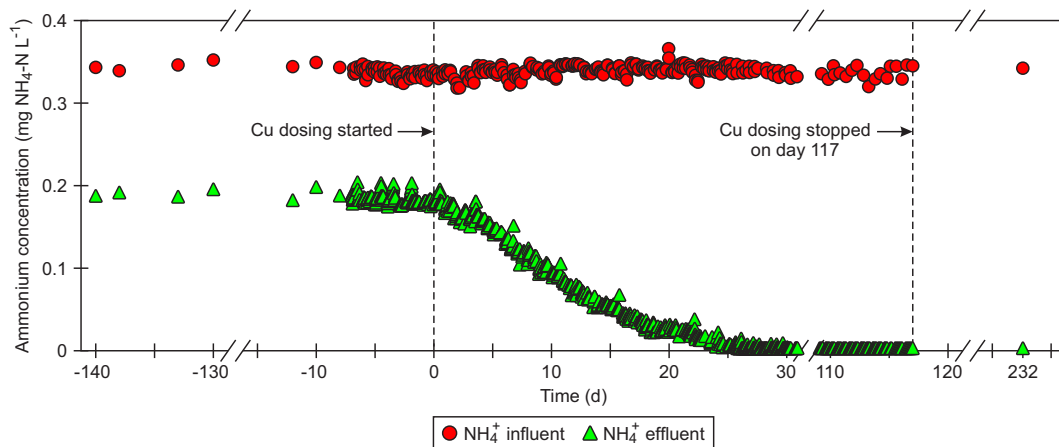
259

260 **Table 2: Copper concentrations in filter influent and effluent in relation to copper dosing, for Filter 4 and**  
 261 **5. All samples were collected at least 1 h after start of filter operation periods. Dissolved copper is**  
 262 **reported for selected samples in ( ).**

		<b>Cu concentration [<math>\mu\text{g L}^{-1}</math>]</b>		
		<b>Day</b>	<b>Influent</b>	<b>Effluent</b>
<b>Filter 4</b>				
265	Before Cu dosing	-62	<0.050	n.m.
		-20	<0.050	n.m.
		-6	<0.050	n.m.
		0	<0.050	<0.050
267	During Cu dosing	1	0.120 (0.098)	<0.050 (<0.050)
		5	0.310	0.139
		7	0.177	0.108
		11	0.482	0.196
		12	<0.050	0.082
		19	0.591 (0.193)	0.126 (0.161)
		23	0.610	0.431
		37	0.400	0.383
		57	0.245	0.289
		85	0.650 (0.139)	0.255 (0.221)
117	0.131 (0.123)	1.330 (0.190)		
271	After Cu dosing	117	<0.050	<0.050
		121	<0.050	0.089
		232	<0.050	<0.050
<b>Filter 5</b>				
273	Before Cu dosing	-106	<0.050	n.m.
		-58	<0.050	n.m.
		-16	<0.050	n.m.
		-2	<0.050	n.m.
275	During Cu dosing	0	<0.050	<0.050
		1	0.157	n.m.
		4	0.968 (0.431)	0.158 (0.083)
		7	0.077	0.078
		14	0.176	0.124
		39	0.303	<0.050
277	After Cu dosing	42	0.093	0.201
		42	<0.050	0.062
		56	<0.050	0.980 (0.162)
		126	<0.050	0.169 (0.114)
280	<0.050	0.115 (0.068)		

n.m.: not measured

279 Shortly after the onset of copper dosing, ammonium removal in the filter responded (Fig. 2). Within the first day  
 280 after the start of dosing, effluent ammonium concentrations started to decrease; latterly during 20 days with  
 281 copper dosing, effluent concentrations dropped to approx.  $0.02 \text{ mg NH}_4\text{-N L}^{-1}$ . With an average influent  
 282 concentration of  $0.341 \text{ mg NH}_4\text{-N L}^{-1}$ , the ARR for full filter depth was  $0.46 \text{ g NH}_4\text{-N m}^{-3} \text{ h}^{-1}$ , more than twice as  
 283 high as the ARR of approx.  $0.22 \text{ g NH}_4\text{-N m}^{-3} \text{ h}^{-1}$  before copper dosing. After 23 days of dosing, effluent  
 284 concentrations of Filter 4 were below quantification limit ( $< 0.02 \text{ mg NH}_4\text{-N L}^{-1}$ ) and remained at this level  
 285 while copper was dosed during 117 days (Fig. 2). While ammonium removal of Filter 4 increased, the control  
 286 filter, which did not receive copper dosing, showed no change in removal performance. 20 days after dosing  
 287 started, the ARR of the control filter was only  $0.23 \text{ g NH}_4\text{-N m}^{-3} \text{ h}^{-1}$ , which was comparable to the removal  
 288 performance of Filter 4 before dosing. Average alkalinity and effluent dissolved oxygen during the experiment  
 289 were  $5.6 \pm 0.1 \text{ meq L}^{-1}$  and  $8.3 \pm 0.23 \text{ mg L}^{-1}$ . The average pH was  $7.6 \pm 0.2$ , and copper dosing did not change  
 290 the pH during the experiment.



291

292 **Figure 2: Ammonium influent and effluent concentrations of full-scale Filter 4. Filter effluent**  
 293 **concentration of ammonium was stable before copper dosing started on day 0. Dosing lasted for 117 days.**  
 294 **All data shown is from samples collected while filter was under operation at constant flow.**

295

296 The mass of copper dosed to Filter 4 during the first 22 days corresponds to an average dosing concentration of  
 297  $0.4 \text{ } \mu\text{g total Cu L}^{-1}$ , calculated from  $4.6 \pm 0.2 \text{ g}$  of copper released into the filter and a total volume of  $11,917 \text{ m}^3$

298 treated by the filter during that period. From day 23 until 117 when dosing was stopped, an additional  $17.4 \pm 0.2$   
299 g of copper were released, totaling to  $22.0 \pm 0.3$  g of copper released during the dosing period. During the  
300 continuous dosing phases the influent water had  $< 1 \mu\text{g total Cu L}^{-1}$  (Table 2), which was lower than the 5 – 30  
301  $\mu\text{g Cu L}^{-1}$  needed to stimulate *Nitrosomonas europaea* in pure culture (Loveless and Painter, 1968). However,  
302 this pure culture study, with an isolate from an activated sludge system, and a culture medium containing EDTA  
303 as chelating agent, is not comparable to our drinking water system with low ammonium concentrations. A rapid  
304 stimulation of nitrification in biological filters due to copper dosing, as observed in our experiment, has not  
305 previously been reported.

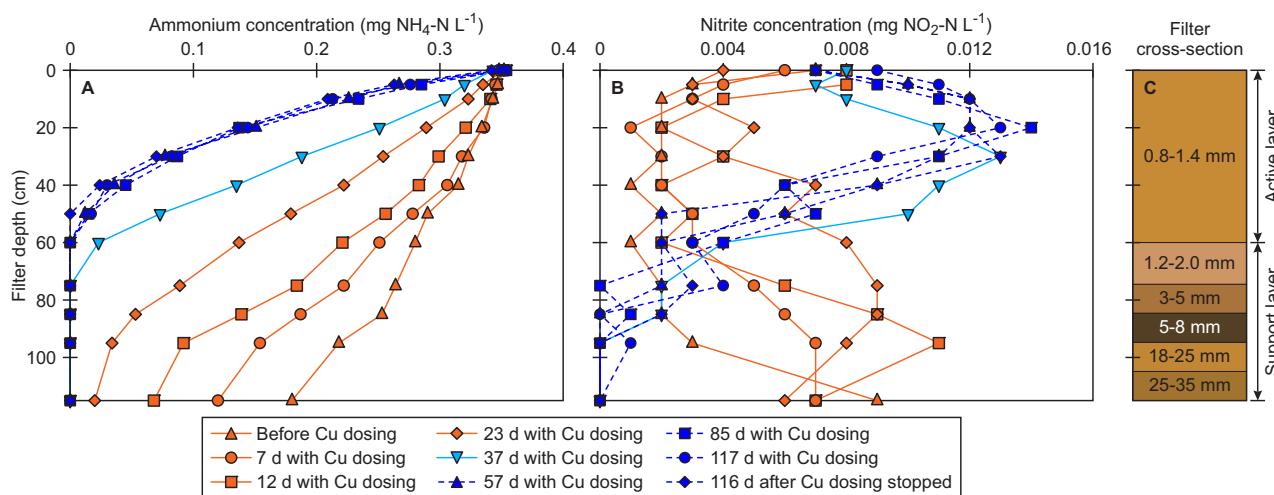
306 Filter influent concentrations of copper without dosing were low (Table 2) due to raw water copper  
307 concentrations at the GWTP of  $< 0.050 \mu\text{g total Cu L}^{-1}$  (n=4, sampled between 62 days before and 5 days with  
308 copper dosing). Processes such as sorption and complexation during treatment in the filter may even further  
309 decrease copper availability for nitrification. It should be noted that insufficiently low copper concentrations  
310 may not be limited to groundwater, but may also be a problem in surface water, since available water phase  
311 concentrations can be low in lake- and river water, where copper can be bound in organic complexes (Xue et al.,  
312 1996) or in bottom sediments (Sanchez and Lee, 1973). Our findings showed that copper dosing can successfully  
313 remove nitrification limitations due to copper deficiency during groundwater treatment, and we suggest that  
314 nitrification limitation by lack of copper should be considered also at water treatment plants treating surface  
315 water, when ammonium removal is incomplete.

### 316 3.3 *Effect of copper dosing on ammonium and nitrite removal over full-scale depth*

317 Water sampling over depth of Filter 4 additionally revealed the effect of copper on ammonium profiles over  
318 filter depth. Before copper dosing, the ammonium concentration decreased slowly over the full depth of Filter 4  
319 (Fig. 3A), from  $0.352$  to  $0.280 \text{ mg NH}_4\text{-N L}^{-1}$  in the top 60 cm, and further down to  $0.180 \text{ mg NH}_4\text{-N L}^{-1}$  in the  
320 effluent of the filter. This observation was surprising, since the deeper section from 60 to 115 cm is the support



321 material of the filter (Fig. 3C), which is not designed to remove ammonium. Yet it shows that a filter's support  
 322 layers can also be active for biological removal, and not only act as bearing layers for the active layers. Contrary  
 323 to previous reports (Lee et al., 2014), removal in this filter was not stratified with most activity in the top part.  
 324 The higher ammonium removal in the deeper parts of the filter (especially from 85-115 cm; Fig. 3A) increased  
 325 the concentration of nitrite, due to too short contact time for further oxidation to nitrate, leading to a nitrite  
 326 concentration of 0.009 mg NO<sub>2</sub>-N L<sup>-1</sup> in the effluent (Fig. 3B). Consequently, the filter failed to meet both  
 327 quality standards, for ammonium and for nitrite.



328

329 **Figure 3: Ammonium (A) and nitrite (B) concentrations over depth of Filter 4, over time in relation to**  
 330 **copper dosing. C illustrates a cross-section of the filter, with the active layer from 0-60 cm depth, and the**  
 331 **support layer from 60-115 cm depth.**

332

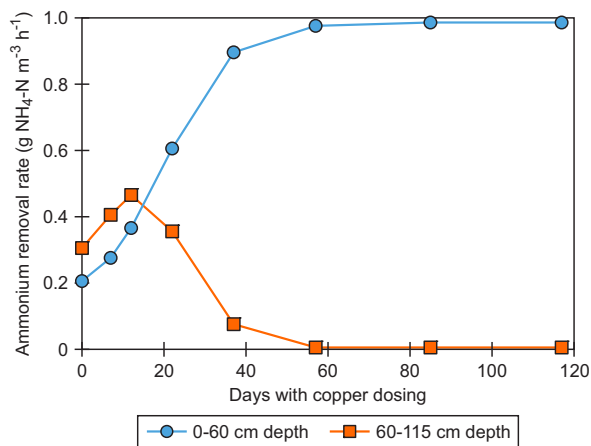
333 Right after the onset of copper dosing, ammonium removal was mainly stimulated in the deeper layer of the  
 334 filter (7 & 12 d with Cu dosing, Fig. 3A), where removal activity prior to dosing was highest. Within 12 days,  
 335 0.116 mg NH<sub>4</sub>-N L<sup>-1</sup> were removed from 75-115 cm depth, compared to 0.084 mg NH<sub>4</sub>-N L<sup>-1</sup> before dosing.  
 336 With dosing, copper fully penetrated the filter, as demonstrated by an average copper effluent concentration of  
 337 0.15 μg Cu L<sup>-1</sup> (n=7) (Table 2) during the first 23 days. Copper dosing moved ammonium removal further  
 338 upwards in the filter, until a steady state, stratified removal was reached between 37 and 57 days with copper

339 dosing. All ammonium was then removed in the active layer (0-60 cm) of the filter (Fig. 3A & C). The same  
340 effect of copper was later observed in the second experiment with Filter 5, described in detail in section 3.5.  
341 Ammonium removal profiles over depth of Filter 4 remained unchanged during continued dosing of copper for  
342 60 more days (117 d with Cu dosing, Fig. 3A). Peaks in nitrite concentrations were observed below sections in  
343 the filter where ammonium oxidation was highest (Fig. 3A & B); with breakthrough of nitrite until ammonium  
344 was removed in the active layer of the filter. Shifting the ammonium removal from the deeper layers to the active  
345 layer with copper dosing also resulted in sufficient contact time for nitrite oxidation. It may furthermore be a  
346 possibility that copper had stimulated the nitrite oxidizing bacteria itself, as copper is contained in the enzyme  
347 nitrite oxidoreductase (Meincke et al., 1992), essential to nitrite oxidizers. A mass balance showed that oxidized  
348 ammonium was present as nitrate and/or nitrite (data not shown), meaning that ammonium removal processes  
349 other than nitrification were negligible. Considering influent and effluent ammonium concentrations only, the  
350 system was at steady-state after 23 days (Fig. 2). Water sampling over depth, however, revealed that after 23  
351 days the ammonium removal pattern still changed over filter depth (Fig. 3A).

#### 352 3.4 *Increase in ammonium removal capacity with copper dosing*

353 To quantify the effect of copper on the filter's ammonium removal capacity, the ARR for specific layers of the  
354 filter was calculated from the ammonium profiles over filter depth. Before copper dosing, the ARR of the  
355 support material (60-115 cm) was  $0.30 \text{ g NH}_4\text{-N m}^{-3} \text{ h}^{-1}$ , slightly higher than the ARR of the active layer (0-60  
356 cm) of  $0.20 \text{ g NH}_4\text{-N m}^{-3} \text{ h}^{-1}$  (day 0, Fig. 4). The ARR of the active layer increased when copper dosing shifted  
357 ammonium removal upwards in the filter. Also, the ARR of the support material increased after the onset of  
358 copper dosing. However, it decreased again after approx. 12 days (Fig. 4), because with increasing ammonium  
359 removal in the upper layers, ammonium concentrations were decreased when reaching the support material (e.g.  
360 23 d with Cu dosing, Fig. 3A), resulting in a decrease of the actual ARR of the support material. Hence, no  
361 ammonium removal occurred in the support material on days 57, 85, and 117 (Fig. 4), when ammonium was

362 completely removed in the active layer of the filter (Fig. 3A). The ARR of the active layer increased almost 5-  
363 fold during 57 days with copper dosing, to  $0.98 \text{ g NH}_4\text{-N m}^{-3} \text{ h}^{-1}$  (Fig. 4).



364

365 **Figure 4: Volumetric ammonium removal rates (ARR) of the active layer (0-60 cm) and the support layer**  
366 **(60-115 cm) of Filter 4, over time in relation to copper dosing.**

367

368 Based on full filter depth (0-115 cm), the ARR was  $0.22 \text{ g NH}_4\text{-N m}^{-3} \text{ h}^{-1}$  before copper dosing, which was the  
369 maximum removal capacity of the filter, given the applied normal operating and loading conditions. Copper  
370 dosing increased the ARR to  $0.5 \text{ g NH}_4\text{-N m}^{-3} \text{ h}^{-1}$ , and thus increased the ammonium removal capacity. The  
371 initial ability of the support material to remove ammonium before all ammonium was oxidized in the active  
372 layer, indicated extra ammonium removal capacity in the deeper layers of the filter. However, the maximum  
373 removal capacity of the filter with copper dosing was unknown, since the filter was, at that point, limited by  
374 ammonium, and the ALR to the full-scale system could not be further increased through increasing either flow or  
375 ammonium concentration. Information about the maximum removal capacity of a biological filter is important,  
376 since it provides indications about filter performance under dynamic operating conditions, such as varying flow  
377 rates or shifting wells and therefore influent water composition (Lee et al., 2014).

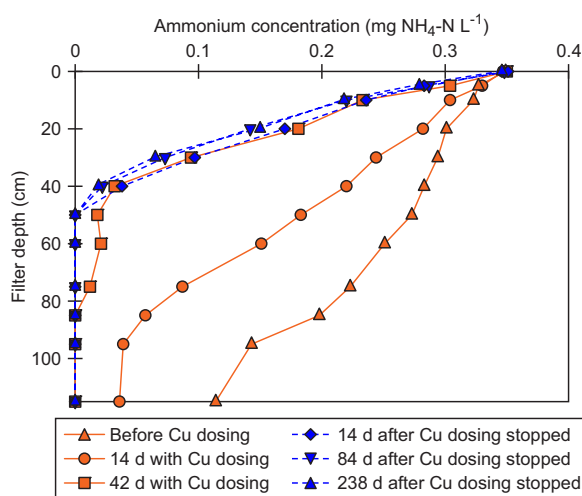
378 Considering the top 10 cm layer of the filter, the ARR increased almost 14-fold within 57 days of dosing, from  
379 0.15 to 2.03 g NH<sub>4</sub>-N m<sup>-3</sup> h<sup>-1</sup>, revealing a considerable increase in removal capacity of the filter material in this  
380 layer. The strong increase in removal rates throughout the active layer allowed for a complete nitrification,  
381 including the complete oxidation of nitrite. This increase due to copper dosing therefore enabled the remediation  
382 of incomplete nitrification.

### 383 3.5 *Persistence of stimulated ammonium removal*

384 To investigate the persistence of removal performance, ammonium depth profiles and effluent concentrations  
385 were monitored after copper dosing was stopped. A profile over depth of Filter 4, measured 116 days after the  
386 copper electrode was removed, demonstrated that copper dosing had a long-term positive effect on ammonium  
387 removal. The ammonium removal pattern over depth was unchanged, compared to the profile before dosing was  
388 stopped (117 d with Cu dosing & 116 d after Cu dosing stopped, Fig. 3A).

389 Whereas dosing to Filter 4 lasted for 117 days, copper was dosed in a second experiment with Filter 5 for only  
390 42 days. Water depth sampling before the onset of dosing denoted an ammonium profile comparable to the one  
391 of Filter 4 (Fig. 5 & Fig. 3A), even though ammonium removal was initially slightly higher in Filter 5. After the  
392 onset of copper dosing to Filter 5, nitrification responded promptly, and ammonium effluent concentrations  
393 stabilized at < 0.01 mg NH<sub>4</sub>-N L<sup>-1</sup> within 22 days. Ammonium removal was also shifted upwards in the filter, as  
394 was previously observed in Filter 4; and after 42 days with copper dosing, the ammonium removal pattern  
395 approached the steady-state pattern exhibited in the first experiment (Fig. 5 & 57 d with Cu dosing, Fig. 3A).  
396 Removal over depth was even marginally improved 14 days after dosing stopped, and, furthermore, maintained  
397 at later times, e.g. 84 and 238 days after dosing stopped (Fig. 5). Effluent ammonium concentrations, measured  
398 every 2-3 weeks for 238 days after dosing stopped, were < 0.01 mg NH<sub>4</sub>-N L<sup>-1</sup> (n=14). These observations  
399 therefore confirm the effect of copper dosing on nitrification and its long-lasting properties, as previously  
400 demonstrated for Filter 4. After dosing started, Filter 5 was, as in the case of Filter 4, fully penetrated with

401 copper effluent concentrations of  $0.11 \mu\text{g Cu L}^{-1}$  (n=5). After dosing was stopped, influent copper concentrations  
 402 decreased back to  $< 0.050 \mu\text{g Cu L}^{-1}$  (Table 2). Potential explanations for the continued stimulation are discussed  
 403 below in section 3.6. This second experiment showed a clear long-term effect, even though copper was dosed for  
 404 a shorter period than in the first experiment. This has highly practical and economic implications, as continuous  
 405 dosing of copper was not necessary for keeping ammonium removal performance high.



406

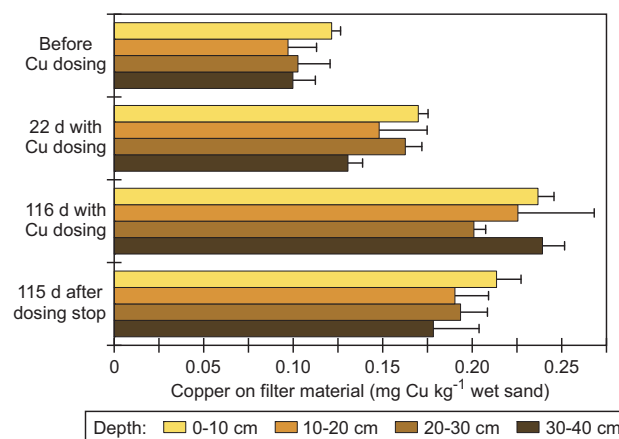
407 **Figure 5: Ammonium concentrations over depth of Filter 5, over time in relation to copper dosing. Copper**  
 408 **dosing to this filter lasted for 42 days.**

409

### 410 3.6 *Distribution of copper in the filter*

411 Since copper can readily sorb to iron-oxide (Benjamin et al., 1996) and manganese-oxide coated sand (Han et  
 412 al., 2006), we investigated the distribution of copper on the top 40 cm sand of Filter 4, before, during, and after  
 413 copper dosing. Although influent iron is primarily removed in the top 20 cm of the filter (Supplementary  
 414 information, Fig. 1-SI), copper penetrated deeper during dosing and was also accumulated on the filter media  
 415 below 20 cm (Fig. 6). Out of the  $4.6 \pm 0.2 \text{ g Cu}$  dosed during the first 22 days,  $0.6 \pm 0.2 \text{ g}$  accumulated in the top  
 416 40 cm of the filter (calculated from the mean of triplicate media analysis  $\pm$  standard deviation, and sand wet bulk  
 417 density). The total amount of copper in this layer was then  $2.0 \pm 0.2 \text{ g}$ , compared to  $1.4 \pm 0.1 \text{ g}$  before dosing

418 started. Continued copper dosing increased accumulation further to a total of  $3.0 \pm 0.2$  g from 0 to 40 cm depth  
 419 of the filter until day 116, when the dosing was stopped and copper content on sand started to decrease again.  
 420 Nevertheless, the amount on sand 115 days after dosing stopped only decreased to  $2.6 \pm 0.1$  g Cu, corresponding  
 421 to a wash out of  $0.4 \pm 0.2$  g. This was still approx. 85 % higher than the initial amount, showing that copper was  
 422 released slower than it accumulated on the media. A release to the water phase was demonstrated through  
 423 measurements for both filters, as copper was detected in the effluent after dosing of the metal was stopped  
 424 (Table 2). This may have made copper available in the bulk phase and could possibly explain the sustained  
 425 nitrification performance (as described in 3.5). Since microbial communities in such filters are organized as a  
 426 biofilm on the sand (Güluy et al., 2014), copper might furthermore have been (re-)cycled within the biofilm  
 427 itself, and/or became available to the biofilm after desorption from sand (Simpson, 2008) without actual release  
 428 to the bulk water phase. In addition, persisting increased ammonium removal might have been caused by  
 429 biomass growth during copper dosing, with subsequent low (internal and external) decay (Loosdrecht and  
 430 Henze, 1999).



431

432 **Figure 6: Copper content on sand over depth (0-40 cm) of Filter 4, before copper dosing, 22 and 116 days**  
 433 **with dosing, and 115 days after dosing was stopped. All samples were collected right after filter backwash.**  
 434 **Error bars give the standard deviation of the results from triplicate metal extractions for each sand sub-**  
 435 **sample.**

436

437 A fraction of copper in the water phase was present as dissolved copper (Table 2), which includes free hydrated  
438  $\text{Cu}^{2+}$  ions and copper complexed with organic and inorganic ligands. The other fraction in the water phase (the  
439 difference between total copper and dissolved copper) was sorbed to suspended particles or bound in complexes  
440 too large to pass through the 0.2  $\mu\text{m}$  pore size filter used for sample filtration. Both sorption and complexation  
441 are able to considerably reduce the concentration of free copper (Sylva, 1976) and even though certain  
442 microorganisms may be able to use complexed forms of copper, free  $\text{Cu}^{2+}$  is generally considered the  
443 bioavailable form, controlling growth and activity of nitrifiers (Amin et al., 2013; Jacquot et al., 2014). Since  
444 high alkalinity and pH levels decrease the concentration of free  $\text{Cu}^{2+}$  (Zhang and Edwards, 2010), free  $\text{Cu}^{2+}$  was  
445 likely lower than the measured concentrations of dissolved copper, given the water chemistry as specified in  
446 Table 1. Since copper dosing concentrations were low and the highest measured effluent concentrations were <  
447 1.4  $\mu\text{g}$  total  $\text{Cu}$   $\text{L}^{-1}$  (Table 2), the national guideline for water treatment plants effluent of 100  $\mu\text{g}$  total  $\text{Cu}$   $\text{L}^{-1}$  was  
448 not challenged, and effluent concentrations were several orders of magnitude lower than the health-based  
449 guideline of 2,000  $\mu\text{g}$   $\text{Cu}$   $\text{L}^{-1}$  at the consumer's tap (WHO, 2011); these effluent levels remain insignificant  
450 compared to release from copper premise plumbing. In any case, nutrient dosing concentrations should be kept  
451 as low as possible when used for enhancement of biological treatment, inherent to maintain biological stability in  
452 the distribution system.

453

#### 454 **4. Conclusions**

- 455 • Ammonium removal was stimulated in a lab-scale column packed with full-scale filter sand under  
456 addition of a trace metal mixture containing copper. Stimulation was more pronounced at increased  
457 ammonium loading rates.
- 458 • Controlled dosing of copper to a full-scale biological filter decreased ammonium effluent concentrations  
459 from a stable level of 0.18  $\text{mg}$   $\text{NH}_4\text{-N}$   $\text{L}^{-1}$  prior to dosing, to 0.02  $\text{mg}$   $\text{NH}_4\text{-N}$   $\text{L}^{-1}$  within 20 days.

- 460 • Nitrification was stimulated over full filter depth and ammonium and nitrite removal shifted upwards in  
461 the filter with copper dosing, leading to stratified removal. The ammonium removal rate of a filter's top  
462 10 cm increased almost 14-fold within 57 days of dosing, thereby increasing the filter material's removal  
463 capacity.
- 464 • The observed stimulation persisted even after copper dosing was stopped. With 42 days of copper dosing  
465 to a filter, ammonium removal activity remained high for at least 238 days after dosing was stopped,  
466 demonstrating that continuous dosing was not necessary.
- 467 • Copper dosing concentrations were low at  $< 5 \mu\text{g Cu L}^{-1}$  and stimulated ammonium removal in full-scale  
468 within only 1 day. Copper fully penetrated the filter, with effluent concentrations of up to  $1.3 \mu\text{g Cu L}^{-1}$ ,  
469 several orders of magnitude below health based drinking water guidelines. Out of  $4.6 \pm 0.2 \text{ g Cu}$  dosed  
470 during 22 days, approx. 13 % accumulated on filter media in the top 40 cm.
- 471 • After dosing stopped, copper content on filter media in the top 40 cm decreased slower than it had  
472 accumulated during dosing. Effluent copper measurements substantiated a release of copper to the bulk  
473 phase, which may possibly explain the observed long-term effect on nitrification.

474 Overall, our study demonstrated that poor nitrification performance, due to copper deficiency in groundwater  
475 based biological rapid sand filters, could be effectively remediated through dosing of copper. Dosing at low  
476 concentrations ( $\sim \mu\text{g Cu L}^{-1}$ ) was a powerful tool for increasing ammonium removal rates and capacity of  
477 biological filters, and had a long-term effect on removal performance. We believe that these findings can have a  
478 high impact on the water treatment industry.

479

## 480 **Acknowledgments**

481 This work was supported by the Danish Council for Strategic Research via the project DW Biofilters and the  
482 Urban Water Tech Research School. The authors gratefully acknowledge help from Jimmi Jørgensen at Nærum



483 GWTP, Torben Weng at Langerød GWTP, and Charlotte Loewe Jensen from Krüger A/S, and thank Carson O.  
484 Lee and Karolina Tatari for their assistance in this project.

485

486 **References**

487 Adriano, D.C., 1986. Trace elements in the terrestrial environment. Springer Verlag Berlin Heidelberg New  
488 York Tokyo, New York, NY.

489 Amin, S.A., Moffett, J.W., Martens-Habbena, W., Jacquot, J.E., Han, Y., Devol, A., Ingalls, A.E., Stahl, D.A.,  
490 Armbrust, E.V., 2013. Copper requirements of the ammonia-oxidizing archaeon *Nitrosopumilus maritimus*  
491 SCM1 and implications for nitrification in the marine environment. *Limnol. Oceanogr.* 58, 2037–2045.  
492 doi:10.4319/lo.2013.58.6.2037

493 APHA, AWWA, WEF, 2005. Standard methods for the examination of water and wastewater, 21st ed. American  
494 Public Health Association, Washington, DC.

495 Arp, D.J., Chain, P.S.G., Klotz, M.G., 2007. The impact of genome analyses on our understanding of ammonia-  
496 oxidizing bacteria\*. *Annu. Rev. Microbiol.* 61, 503–528. doi:10.1146/annurev.micro.61.080706.093449

497 Benjamin, M.M., Sletten, R.S., Bailey, R.P., Bennett, T., 1996. Sorption and filtration of metals using iron-  
498 oxide-coated sand. *Water Res.* 30, 2609–2620. doi:10.1016/S0043-1354(96)00161-3

499 de Vet, W.W.J.M., Kleerebezem, R., van der Wielen, P.W.J.J., Rietveld, L.C., van Loosdrecht, M.C.M., 2011.  
500 Assessment of nitrification in groundwater filters for drinking water production by qPCR and activity  
501 measurement. *Water Res.* 45, 4008–4018. doi:10.1016/j.watres.2011.05.005

502 de Vet, W.W.J.M., van Loosdrecht, M.C.M., Rietveld, L.C., 2012. Phosphorus limitation in nitrifying  
503 groundwater filters. *Water Res.* 46, 1061–1069. doi:10.1016/j.watres.2011.11.075

504 Ensign, S.A., Hyman, M.R., Arp, D.J., 1993. In vitro activation of ammonia monooxygenase from *Nitrosomonas*  
505 *europaea* by copper. *J. Bacteriol.* 175, 1971–1980.

506 Gülay, A., Tatari, K., Musovic, S., Mateiu, R. V, Albrechtsen, H.-J., Smets, B.F., 2014. Internal porosity of  
507 mineral coating supports microbial activity in rapid sand filters for groundwater treatment. *Appl. Environ.*  
508 *Microbiol.* 80, 7010–7020. doi:10.1128/AEM.01959-14

509 Han, R., Zou, W., Zhang, Z., Shi, J., Yang, J., 2006. Removal of copper(II) and lead(II) from aqueous solution  
510 by manganese oxide coated sand I. Characterization and kinetic study. *J. Hazard. Mater.* 137, 384–395.  
511 doi:10.1016/j.jhazmat.2006.02.021

512 Jacquot, J.E., Horak, R.E.A., Amin, S.A., Devol, A.H., Ingalls, A.E., Armbrust, E.V., Stahl, D.A., Moffett, J.W.,  
513 2014. Assessment of the potential for copper limitation of ammonia oxidation by Archaea in a dynamic  
514 estuary. *Mar. Chem.* 162, 37–49. doi:10.1016/j.marchem.2014.02.002

515 Lee, C.O., Boe-Hansen, R., Musovic, S., Smets, B., Albrechtsen, H.-J., Binning, P., 2014. Effects of dynamic  
516 operating conditions on nitrification in biological rapid sand filters for drinking water treatment. *Water Res.*  
517 48, 226–236. doi:10.1016/j.watres.2014.07.001

518 Leininger, S., Urich, T., Schloter, M., Schwark, L., Qi, J., Nicol, G.W., Prosser, J.I., Schuster, S.C., Schleper, C.,  
519 2006. Archaea predominate among ammonia-oxidizing prokaryotes in soils. *Nature* 442, 806–809.  
520 doi:10.1038/nature04983

521 Loosdrecht, M. Van, Henze, M., 1999. Maintenance, endogeneous respiration, lysis, decay and predation. *Water*  
522 *Sci. Technol.* 39, 107–117. doi:10.1016/S0273-1223(98)00780-X

- 523 Loveless, J.E., Painter, H.A., 1968. The influence of metal ion concentrations and pH value on the growth of a  
524 Nitrosomonas strain isolated from activated sludge. *J. Gen. Microbiol.* 52, 1–14. doi:10.1099/00221287-52-  
525 1-1
- 526 Lytle, D.A., Sorg, T.J., Muhlen, C., Wang, L., Rahrig, M., French, K., 2007. Biological nitrification in a full-  
527 scale and pilot-scale iron removal drinking water treatment plant. *J. Water Supply Res. Technol.* 56, 125–  
528 136. doi: 10.2166/aqua.2007.092
- 529 Martens-Habbena, W., Stahl, D.A., 2011. Nitrogen metabolism and kinetics of ammonia-oxidizing archaea.  
530 *Methods Enzymol.* 496, 465–487. doi:10.1016/B978-0-12-386489-5.00019-1
- 531 Meincke, M., Bock, E., Kastrau, D., Kroneck, P.M.H., 1992. Nitrite oxidoreductase from *Nitrobacter*  
532 *hamburgensis*: redox centers and their catalytic role. *Arch. Microbiol.* 158, 127–131.  
533 doi:10.1007/BF00245215
- 534 Miljøministeriet, 2014. Statutory order on water quality and surveillance of water supply facilities. (In Danish;  
535 Bekendtgørelse om vandkvalitet og tilsyn med vandforsyningsanlæg). BEK nr 292 af 26/03/2014  
536 Gældende. Danish Ministry of Environment
- 537 Pedroni, M., Davoli, D., Cavagnoli, G., Madoni, P., Cucchi, A., Rossi, F., 1997. Biological ammonium removal  
538 from drinking water: evaluation of water-plants performance. (In Italian; Rimozione biologica  
539 dell'ammoniaca dalle acque potabili: valutazione dei parametri di processo). *IA Ing. Ambient.* 26, 642-649.
- 540 Prosser, J.I., 1989. Autotrophic nitrification in bacteria, in: Rose, A.H., Tempest, D.W. (Eds.), *Advances in*  
541 *microbial physiology*. Academic Press, 125-181.
- 542 Rittmann, B.E., Tang, Y., Meyer, K., Bellamy, W.D., 2012. Biological processes. Chpt. 17 in *Water Treatment*  
543 *Plant Design*. American Water Works Association.

544 Sanchez, I., Lee, G., 1973. Sorption of copper on Lake Monona sediments—effect of NTA on copper release  
545 from sediments. *Water Res.* 7, 587-593. doi:10.1016/0043-1354(73)90058-4

546 Sayavedra-Soto, L.A., Arp, D.J., 2011. Ammonia-oxidizing bacteria: Their biochemistry and molecular biology,  
547 in: Ward, B.B., Arp, D.J., Klotz, M.G. (Eds.), *Nitrification*. ASM Press, Washington, DC, 11–37.

548 Simpson, D., 2008. Biofilm processes in biologically active carbon water purification. *Water Res.* 42, 2839–  
549 2848. doi:10.1016/j.watres.2008.02.025

550 Sylva, R., 1976. The environmental chemistry of copper (II) in aquatic systems. *Water Res.* 10, 789–792.  
551 doi:10.1016/0043-1354(76)90097-X

552 Tatari, K., Smets, B.F., Albrechtsen, H.-J., 2013. A novel bench-scale column assay to investigate site-specific  
553 nitrification biokinetics in biological rapid sand filters. *Water Res.* 47, 6380–6387.  
554 doi:10.1016/j.watres.2013.08.005

555 USEPA, 2007a. Microwave assisted acid digestion of sediments, sludges, soils, and oils, EPA 3051A. USEPA  
556 Off. Res. Dev. Washingt.

557 USEPA, 2007b. Inductively Coupled Plasma-Mass Spectrometry, EPA 6020A. USEPA Off. Res. Dev. Washingt.

558 Verhagen, F.J.M., Laanbroek, H.J., 1991. Competition for ammonium between nitrifying and heterotrophic  
559 bacteria in dual energy-limited chemostats. *Appl. Envir. Microbiol.* 57, 3255–3263.

560 WHO, 2011. Guidelines for drinking-water quality, 4th ed. World Heal. Organ. Geneva, Switz.

561 Xue, H., Oestreich, A., Kistler, D., Sigg, L., 1996. Free cupric ion concentrations and Cu complexation in  
562 selected Swiss lakes and rivers. *Aquat. Sci.* 58, 69-87. doi:10.1007/BF00877641

563 Zhang, Y., Edwards, M., 2010. Nutrients and metals effects on nitrification in drinking water systems. J. Am.  
564 Water Work. Assoc. 102, 56-66.

565 Zhang, Y., Love, N., Edwards, M., 2009. Nitrification in drinking water systems. Crit. Rev. Environ. Sci.  
566 Technol. 39, 153–208. doi:10.1080/10643380701631739

567