



Wind power variability and power system reserves

Sørensen, Poul Ejnar; Litong-Palima, Marisciel; Hahmann, Andrea N.; Heunis, Schalk; Ntusi, Marathon; Hansen, Jens Carsten

Publication date:
2016

Document Version
Publisher's PDF, also known as Version of record

[Link back to DTU Orbit](#)

Citation (APA):
Sørensen, P. E. (Author), Litong-Palima, M. (Author), Hahmann, A. N. (Author), Heunis, S. (Author), Ntusi, M. (Author), & Hansen, J. C. (Author). (2016). Wind power variability and power system reserves. Sound/Visual production (digital)

General rights

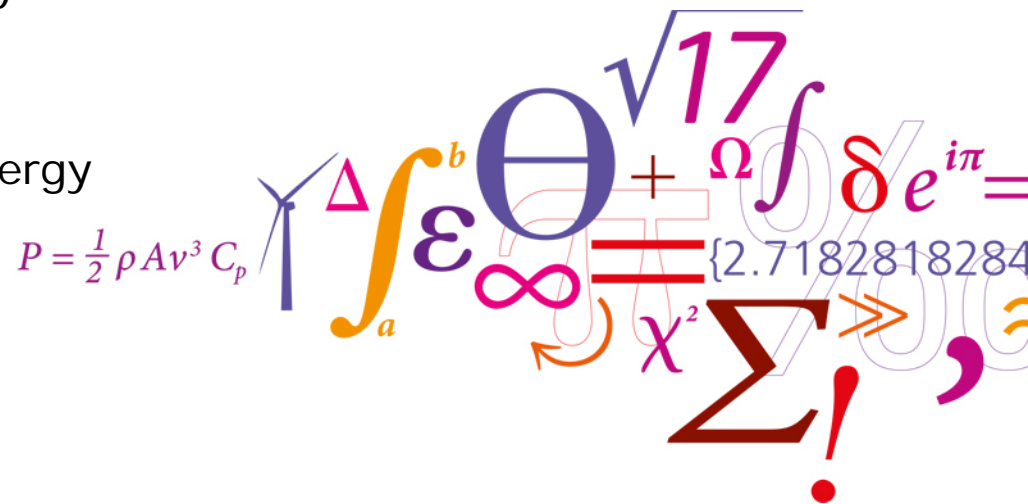
Copyright and moral rights for the publications made accessible in the public portal are retained by the authors and/or other copyright owners and it is a condition of accessing publications that users recognise and abide by the legal requirements associated with these rights.

- Users may download and print one copy of any publication from the public portal for the purpose of private study or research.
- You may not further distribute the material or use it for any profit-making activity or commercial gain
- You may freely distribute the URL identifying the publication in the public portal

If you believe that this document breaches copyright please contact us providing details, and we will remove access to the work immediately and investigate your claim.

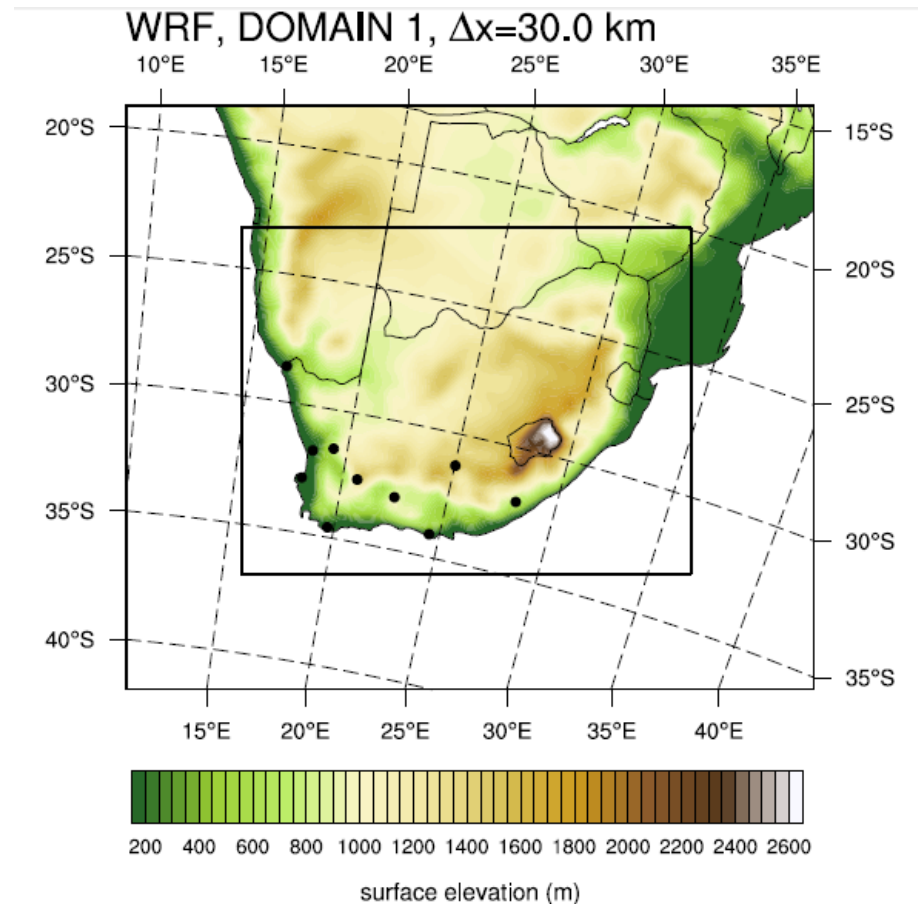
Wind Power variability and power system reserves

Poul Sørensen, DTU Wind Energy
 Marisciel Litong-Palima, DTU Wind Energy
 Andrea Hahmann, DTU Wind Energy
 Schalk Heunis, EOH Enerweb
 Marathon Ntusi, ESKOM
 Jens Carsten Hansen, DTU Wind Energy



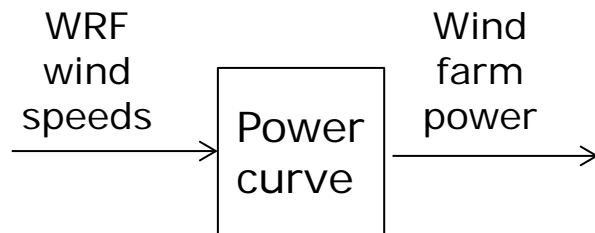
Weather Research and Forecasting (WRF)

- WRF used in the Wind Atlas of South Africa (A. Hahmann et.al.)
- New WRF run to include all South Africa
 - 1990-2014
 - Outer domain 1 $\Delta x=30\text{km}$
 - Inner domain 2 $\Delta x=10\text{km}$
 - Time resolution $\Delta T=1\text{h}$
 - Light nudging
- Stored data
 - Wind speed (height 80m, 100 m and 125m)
 - Wind direction (same heights)
 - Air density
 - Horizontal irradiation
 - Air temperature
 - Wind speed 10m height

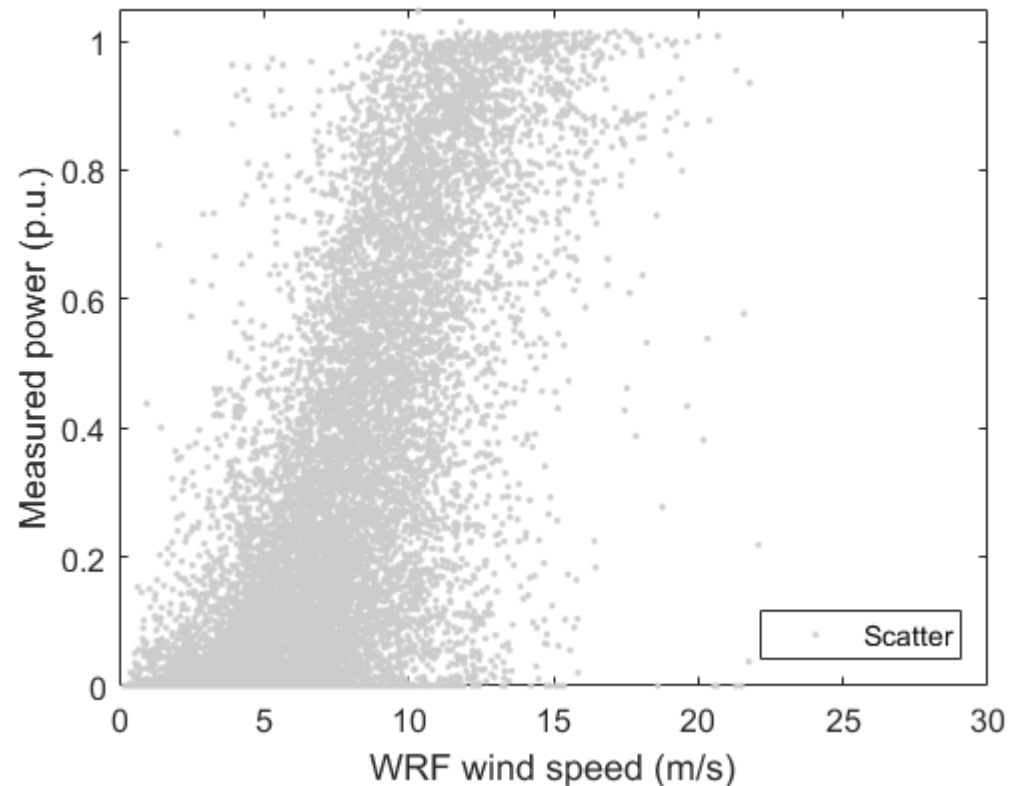


Power curve estimation using WRF wind speeds and measured power

- Power curves needed to model wind power using WRF data:

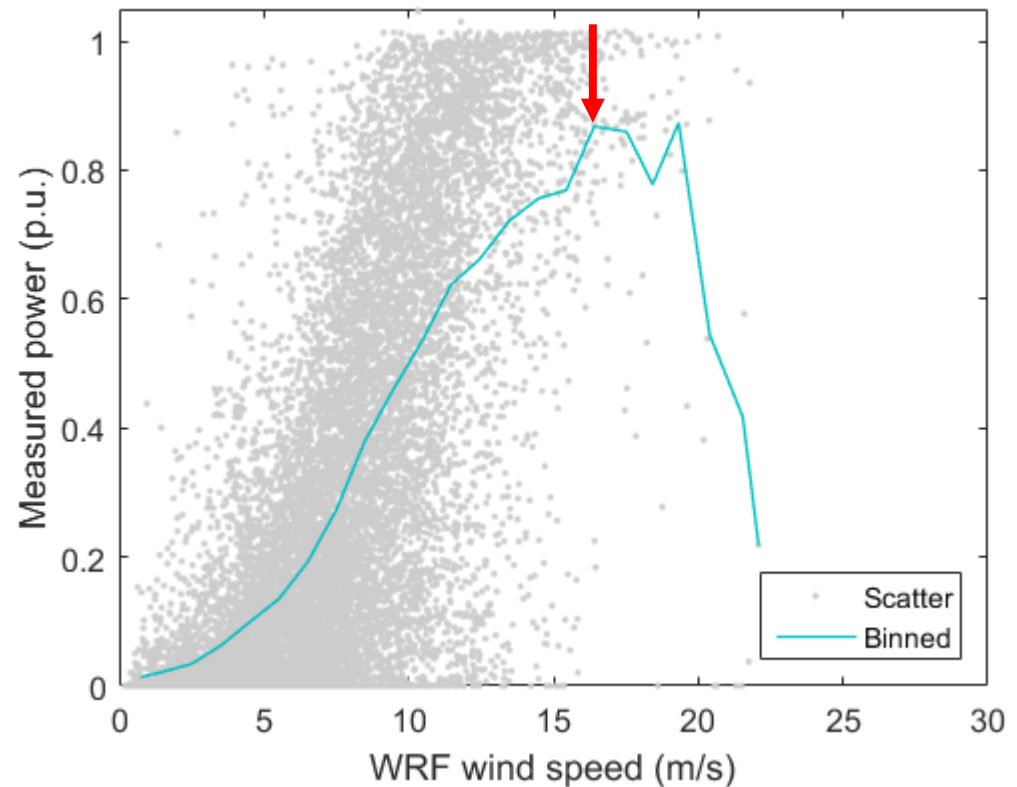
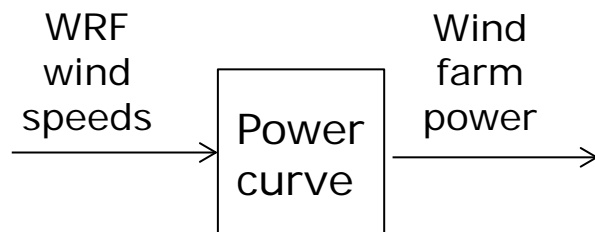


- The example shows high scatter between WRF wind speeds and generated wind farm power in same hour
- A major reason for the high scatter here is that WRF runs are only lightly *nudged*, which ensures inclusion of mesoscale effects



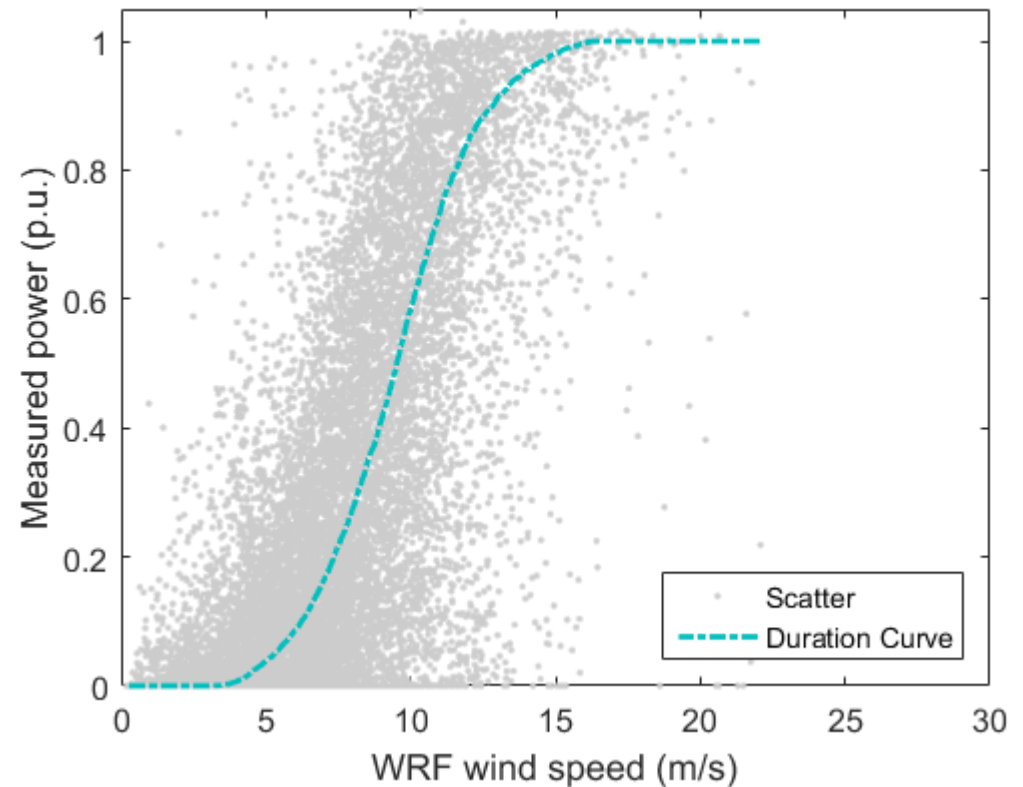
Power curve using standard method of binning

- Usually power curves are generated using method of binning (IEC 61400-12 series):
 - Bin (ws,p) data into ws intervals
 - Calculate average ws and average p in each interval
- **Problem: averaging lowers maximum value and alters the wind power production**



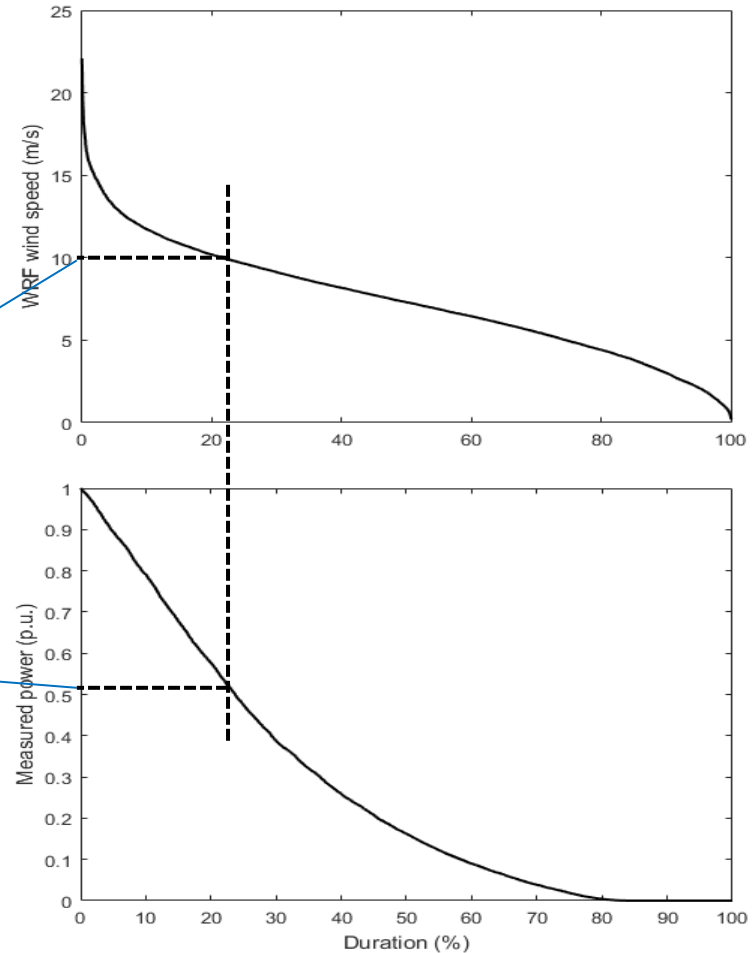
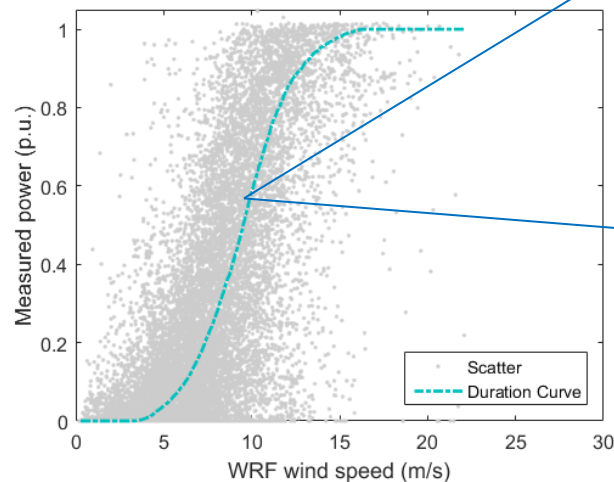
Power curves from duration curves

- Alternative method to estimate power curve:
 - "Duration Curve" method



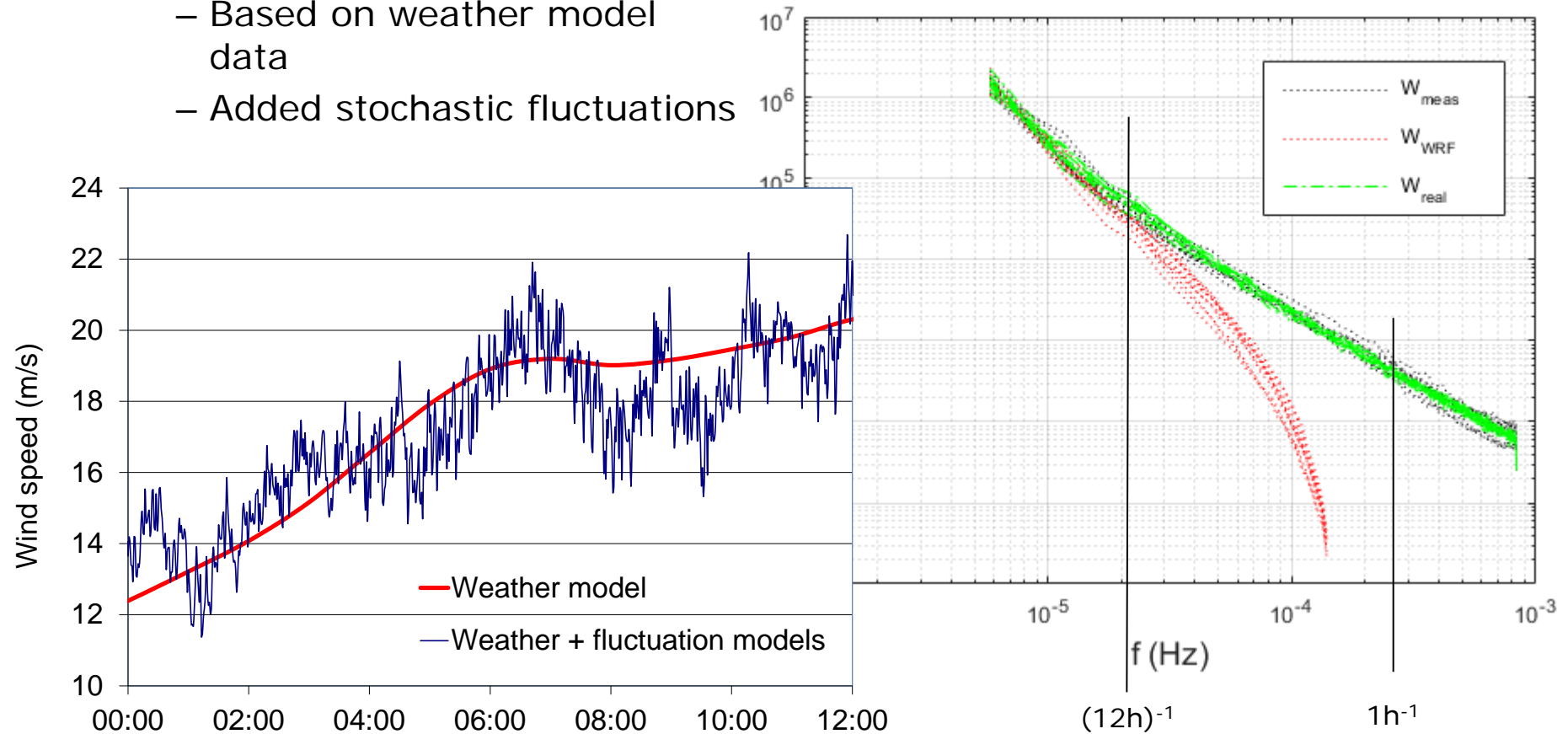
Power curves from duration curves

- Approach:
 1. Sort wind speed data to generate ws duration curve
 2. Sort power data *independently* to generate p duration curve
 3. Pair ws and p data with same quantile

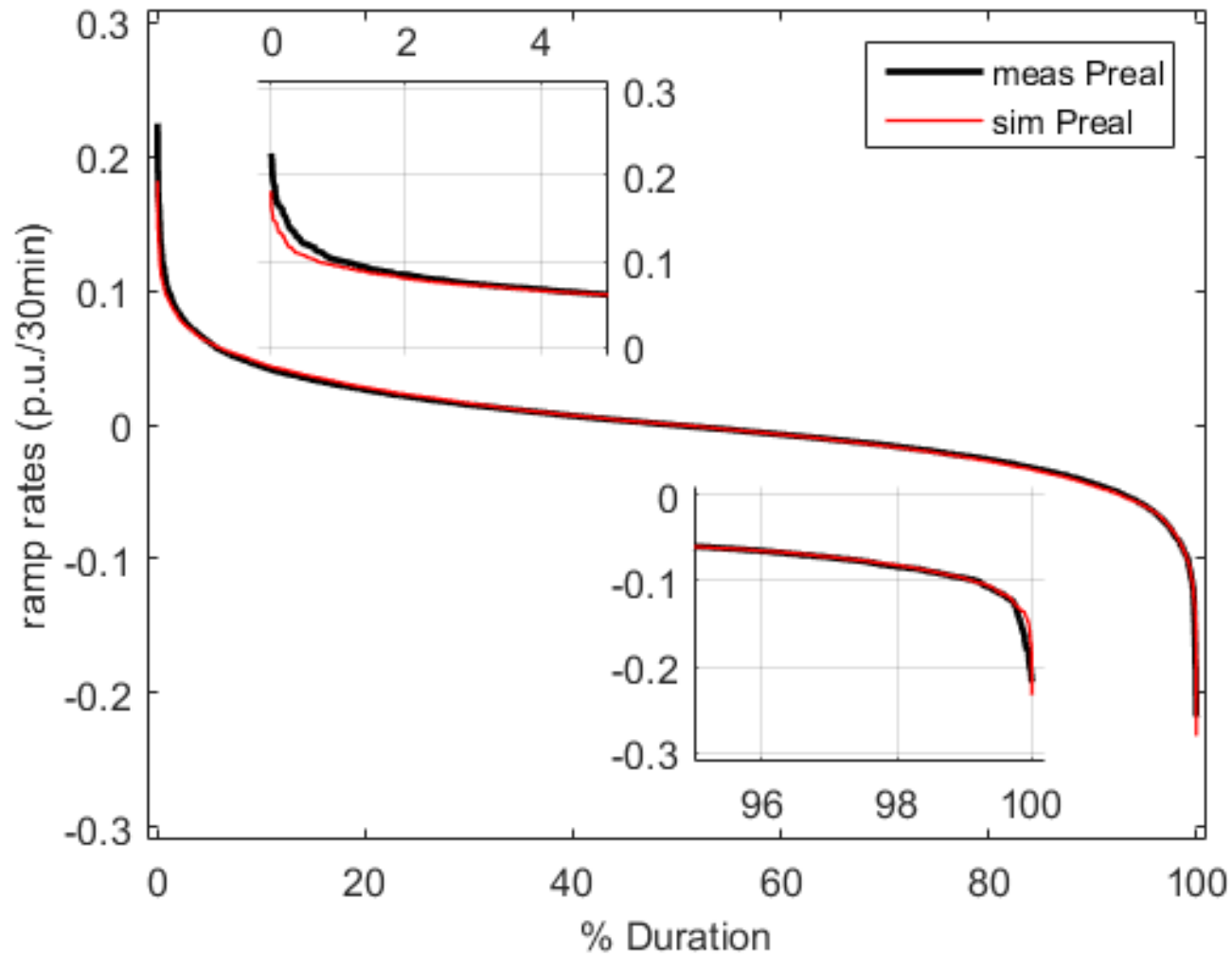


CorWind – Simulation of long term wind speed fluctuations

- Basic CorWind idea
 - Based on weather model data
 - Added stochastic fluctuations

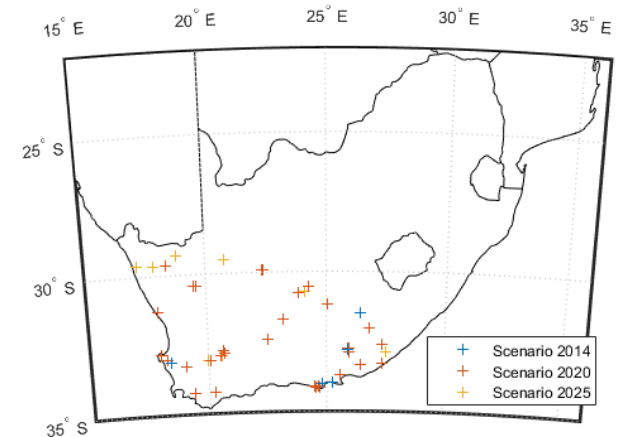


Validation: 30 minutes ramp rate sim and meas **system level** (8 wind farms)



Simulation cases

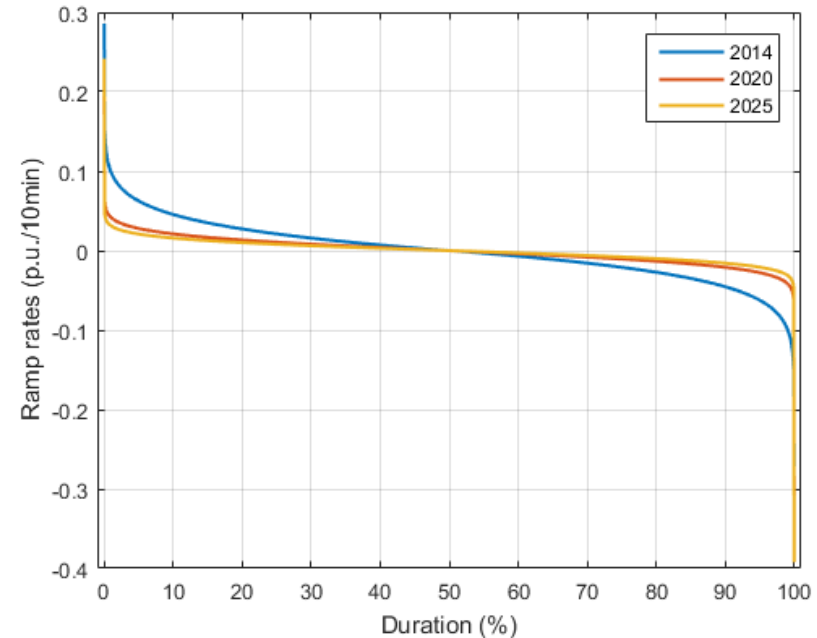
- Cases
 - 2014 Reference (Past) case
 - 2020 Planned development case.
 - 2025 Future case to be considered in the grid development plans.
- 5% of electricity from wind in 2025



Variable	2014	2020	2025
Installed wind capacity [MW]	460	3800	7400
Wind capacity factor [%]	26.2	31.4	30.5
Consumption [TWh/y]	231	356	404
Penetration [%]	0.5	2.9	4.9

Wind power ramp rate statistics

- Relative (per-unit vs. installed wind power capacity) ramp rates decrease with increasing capacities
 - Biggest change between 2014 and 2020
- Reason: spatial smoothing



Case year	2014	2020	2025
Mean absolute ramp rate [p.u./10 min]	0.028	0.013	0.010

Reserves in ESKOM power system

- Different reserve categories reserves (SA grid code):
 - Instantaneous reserves – Used to arrest the frequency at acceptable limits following a contingency [max 10 s activation – min 10 min duration]
 - Regulating reserves – Used for second-by-second balancing of supply and demand, and under AGC control [max 10 min activation – min 1 h duration].
 - 10-minute reserves – To balance supply and demand for changes between the Day ahead market and real-time, such as load forecast errors and unit unreliability [max 10 min activation – min 2 h duration].
 - Emergency reserves – Used when the interconnected power system (IPS) is not in a normal condition, and to return the IPS to a normal condition while slower reserves are being activated [max 10 min activation – min 2 h duration].
 - Supplemental reserves – Used to ensure an acceptable day-ahead risk [max 2-6 h activation – min 2 h duration].

SA regulating reserves requirements

- SA Ancillary Services Technical Requirements 2015/16 – 2019/20. Rev. 1
ESKOM 28-10-2014
 - **Regulating reserves** should be **sufficient to cover the genuine load variations** within the hour

Table 2: Regulating up and down reserve requirements

Reserve	Period	2015/16	2016/17	2017/18	2018/19	2019/20
		MW	MW	MW	MW	MW
Regulating up	Summer (Pk/off pk)	450	450	500	500	550
	Winter (Pk/off pk)	550	550	600	600	650
Regulating down	Summer (Pk/off pk)	450	450	500	500	550
	Winter (Pk/off pk)	550	550	600	600	650

Influence of wind on regulating reserves requirements

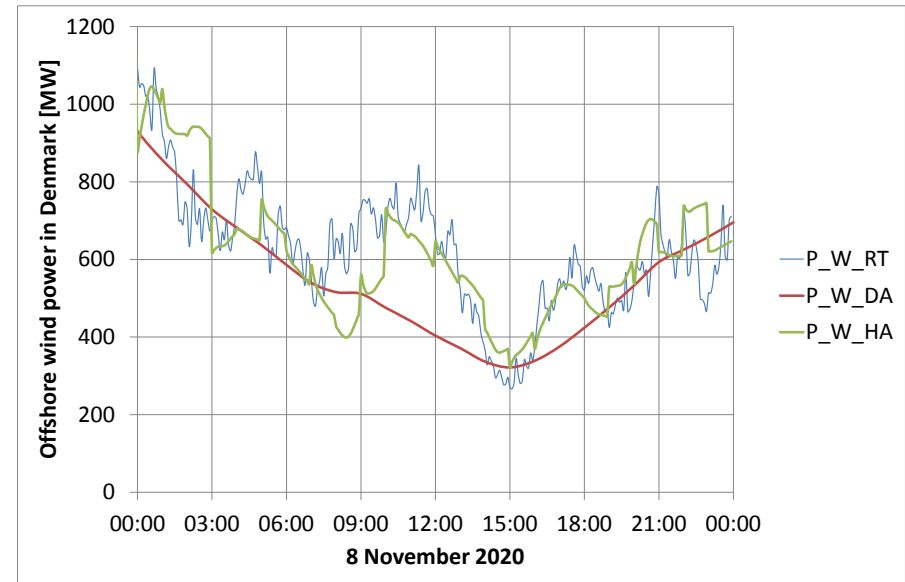
- With wind power in system, regulating reserves should cover variations of

$$\text{residual load} = \text{consumption load} - \text{wind generation}$$
- This increases variations compared to system without wind
- With South African wind penetration cases, the *increase is very small*:

Variable	Season	2014	2020	2025
Consumption variations [MW]	Summer	400	550	700
	Winter	500	650	800
Wind variations [MW]	-	29	106	155
Wind penetration	-	0.5	2.9	4.9
Total variations [MW]	Summer	401	560	717
	Winter	501	659	815
Increase due to wind [%]	Summer	0.3	1.8	2.4
	Winter	0.2	1.4	1.9

Using HA forecast to update planned production

- The Danish TSO Energinet.dk uses **forecasts** to balance power system before hour of operation
- CorWind can simulate wind power forecasts in addition to real time wind power generation
- Similar hour-ahead balancing in South Africa would **reduce** the real time error to be balanced with **expensive automatic** regulating reserves (see table)



Case year	2014	2020	2025
Installed [MW]	460	3800	7400
Day-ahead error [MW]	35	179	318
Hour-ahead error [MW]	25	118	200
Error reduction [MW]	10	61	118

Conclusions

- The presented work is a ***pilot application*** of the ***CorWind*** methodology to ***simulate correlated wind power*** time series and apply the simulations to ***assess the need for reserves***.
- The main conclusions of the work are that
 - ***Ramp rates*** of simulated wind power time series are ***validated*** against measured time series
 - The ***normalized ramp rates*** of wind power will be reduced significantly from 2014 to 2020 because of the ***spatial smoothing***.
 - With the moderate ***5%*** wind power penetration in 2025, the ***impact*** of wind power fluctuations on need for regulating reserves is ***quite small***.
 - ***Hour-ahead balancing*** would lead to significant ***reduction*** of the need for ***expensive (automatic)*** regulating reserves caused by wind power forecast errors.