



Thermovision in Arctic

Vladyková, Petra

Publication date:
2008

[Link back to DTU Orbit](#)

Citation (APA):
Vladyková, P. (2008). *Thermovision in Arctic*. Poster session presented at European Blower Door Symposium.

General rights

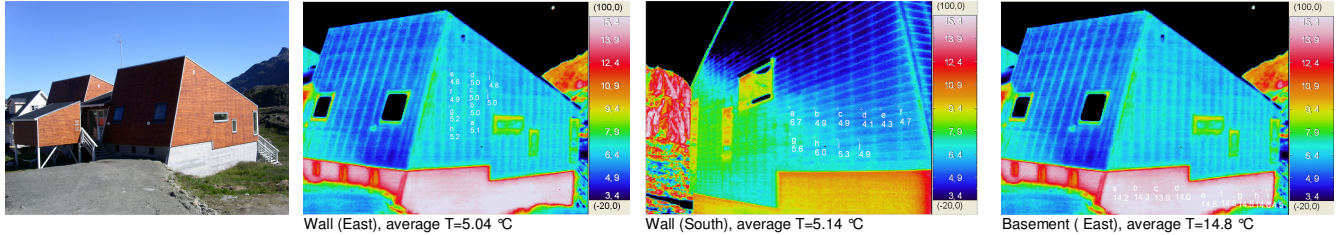
Copyright and moral rights for the publications made accessible in the public portal are retained by the authors and/or other copyright owners and it is a condition of accessing publications that users recognise and abide by the legal requirements associated with these rights.

- Users may download and print one copy of any publication from the public portal for the purpose of private study or research.
- You may not further distribute the material or use it for any profit-making activity or commercial gain
- You may freely distribute the URL identifying the publication in the public portal

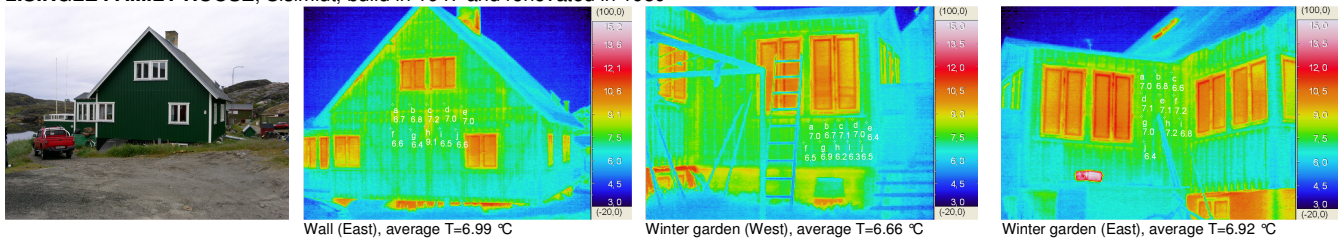
If you believe that this document breaches copyright please contact us providing details, and we will remove access to the work immediately and investigate your claim.

Matrix method is to define a matrix consisting of 10 points (a-j) on the wall surface and obtaining the average, min & max temperature and the temperature difference of the surface which depends on the emissivity of a material. Emissivity $\epsilon_{wood} = 0.95$, $\epsilon_{concrete} = 0.94$.

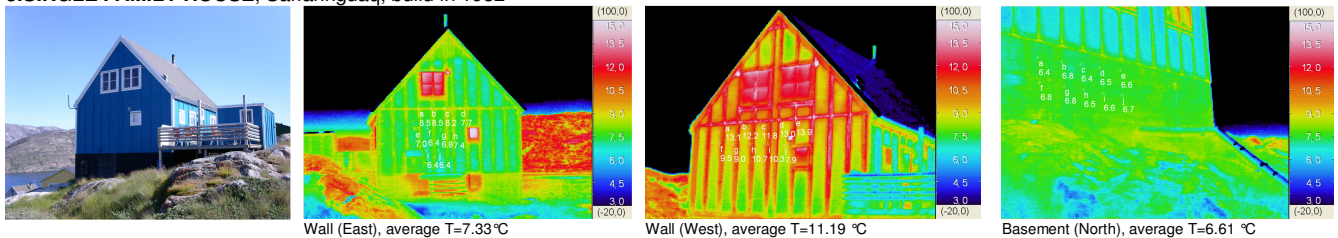
1. LOW ENERGY HOUSE, Sisimiut, build in 2005



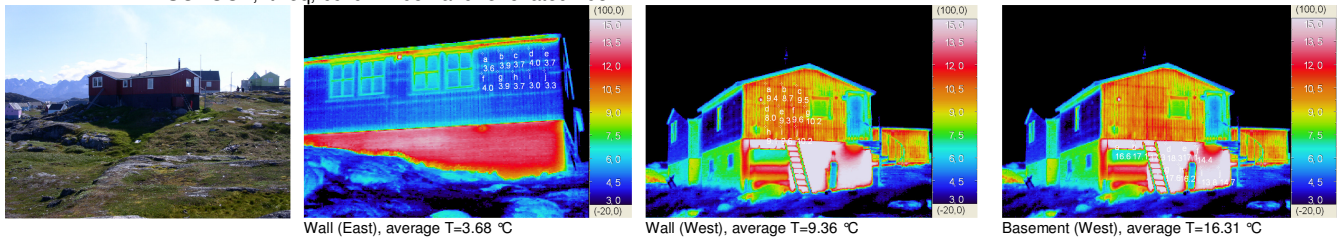
2. SINGLE FAMILY HOUSE, Sisimiut, build in 1947 and renovated in 1989



3. SINGLE FAMILY HOUSE, Sarfannguaq, build in 1982



4. ELEMENTARY SCHOOL, Itilleq, build in 1952 and renovated 1984



Building	Insulation thickness [mm]	Average T [°C]	ΔT [°C]	Results
1.LEH, Sisimiut	Wall: 300 mm	4.95 - 5.01	1.7	Homogeneous wall where the temperature field is very uniform.
2.SF, Sisimiut	Wall: 175 mm Winter garden: 50 mm	6.2 - 9.1	2.9	More insulation and better windows. Problem: joint part of house and winter garden.
3.SF, Sarfannguaq	Wall: 150 mm	5.7 - 13.9 (West: 7.9 - 13.9)	3.4 (6.0)	Insulate walls and basement walls, with special focus on west side of house.
4.ES, Itilleq	Wall = 130 mm	3.0 - 10.2 (West: 8.2 - 10.2)	7.2 (2.0)	Complaints: cold air through basement. Insulate basement and close exhaust holes.

Conclusion: The matrix method represents a simple method for the evaluation of current state of buildings in Sisimiut, Greenland, to determine the situation of walls or thermal insulation (thermal bridges, connection points, exhaust ventilation, etc.)

More results upon request in the report: "Arctic field work in building technology".