



The Danish National Travel Survey Annual Statistical Report for Denmark for 2022

Christiansen, Hjalmar; Baescu, Oana

Publication date:
2023

Document Version
Publisher's PDF, also known as Version of record

[Link back to DTU Orbit](#)

Citation (APA):
Christiansen, H., & Baescu, O. (2023). *The Danish National Travel Survey: Annual Statistical Report for Denmark for 2022*.

General rights

Copyright and moral rights for the publications made accessible in the public portal are retained by the authors and/or other copyright owners and it is a condition of accessing publications that users recognise and abide by the legal requirements associated with these rights.

- Users may download and print one copy of any publication from the public portal for the purpose of private study or research.
- You may not further distribute the material or use it for any profit-making activity or commercial gain
- You may freely distribute the URL identifying the publication in the public portal

If you believe that this document breaches copyright please contact us providing details, and we will remove access to the work immediately and investigate your claim.



Hjalmar Christiansen
Oana Baescu

Center for Transport Analytics
April 3rd 2023

The Danish National Travel Survey Annual Statistical Report

Denmark

2022

Data version TU0622v1

Annual Statistical Report

Denmark 2022

The survey

The Danish National Travel Survey (in Danish: Transportvaneundersøgelsen, TU) is a continuous survey of travel patterns for Danish Residents over 6 years of age. The basic survey design consists of one-person, one-day interviews, conducted at random days during the year. Please refer to www.tudata.dk for more information on the survey.

Using this report

This report may be distributed and cited freely, with proper reference to the report, the Danish National Travel Survey and DTU. The survey may be referenced by DOI: 10.11581/dtu:00000034

Contents of the report

The aim and content of this report is a statistical picture of the transport patterns 2022 for residents over 6 years of age in Denmark, exclusive Greenland and the Faroe Islands.

The tables and figures of this report are, unless otherwise stated, based on persons born 2016 or earlier, resident within the borders of Denmark.

Table 1: Data foundation

Residents in Denmark	Women	Men	2022 total
Number of interviews	5 625	5 510	11 135
Number of trips	17 529	16 196	33 725

Data version: TU0622v1

Due to rounded figures, columns and rows may only approximately account to the stated sum.

The - is used in tables, when a combination has not been observed in the survey. 0.0 indicates, that the combination has been observed, but evaluates as 0.0 .

Table of Contents

This report contains the following tables and figures:

Main results

Table 2: Key figures, by gender page 5

Modes of transport

Table 3: Mileage and travel time by mode page 6

Table 4: Modal split, journeys by mode chain type page 6

Table 5: Time series, modal split, journeys by chain type group page 7

Figure 6: Time series, modal split, journeys by chain type group page 7

Figure 7: Time series, collective share of journeys page 7

Table 8: Time series, modal split by mileage page 8

Figure 9: Time series, modal split by mileage (grouped) page 8

Figure 10: Time series, collective bus market share by mileage page 8

Table 11: Journeys by length and chain type page 9

Table 12: Total road mileage and travel time, sum per day page 10

Table 13: Average working day vs. average day traffic page 11

Table 14: Local and regional road mileage page 11

Purpose

Table 15: Trips, distance and total travel time by purpose page 12

Table 16: Journeys, distance and travel time by primary purpose page 13

Figure 17: Purpose distribution by trips and journeys page 13

Table 18: Trips by purpose group and mode chain type page 14

Table 19: Travel time by purpose group and mode chain type page 15

Table 20: Mileage (PKM) by mode and purpose group page 16

Figure 21: Mileage by purpose group page 17

Table 22: Vehicle mileage by mode and purpose group page 18

Table 23: Journeys by purpose group and mode chain type page 19

Commuting

Table 24: Commuter journeys by chaintype page 20

Table 25: Time series, modal split, workplace commuting page 21

Figure 26: Time series, commuter modal split page 21

Figure 27: Collective share of workplace commuting page 21

Socioeconomics

Table 28: Gender, mileage and travel time by mode page 22

Table 29: Gender, journeys and travel time by chaintype page 23

Table 30: Gender, journey primary purpose page 23

Table 31: Age groups, mileage by mode page 24

Table 32: Age groups, journeys by chain type page 25

Table 33: Age groups, journey primary purpose page 25

Table 34: Occupation groups, mileage by mode page 26

Table 35: Occupation groups, journeys by chain type page 27

Table 36: Occupation groups, journey primary purpose page 27

Table 37: Income groups, mileage by mode page 28

Table 38: Income groups, journeys by chain type page 29

Table 39: Income groups, journey primary purpose page 29

Definitions

Annual Average Day Traffic	Any traffic statistic calculated as average of all 365 days in the year. This definition is understood, when 'per day' is stated. [Danish: Årsdøgntrafik, abbrev. AADT or ÅDT]
Business Trip	<i>Business Trips</i> are any trips, with trip purpose as a professional activity, conducted at a destination elsewhere than the ordinary workplace. Notice the difference to Commercial Transport . [Danish: erhvervstur]
Chain Type	Mode <i>Chain Type</i> is a qualitative aggregation of the modes on a trip or journey , such that all cases with collective transport are classified as such. [Danish: kædetype]
Collective Transport	<i>Collective Transport</i> is any mode of transport, where independent travellers are transported by the same physical vehicle, if only route and time is identical. This definition is almost, but not quite the same as public transport. Public transport generally includes e.g. taxis, which are not collective.
Commercial Transport	<i>Commercial Transport</i> is defined as any transport activity, where the actual movement is the commercial purpose. This is different from the business trips , where the commercial activity is done at each destination. Classic examples on <i>Commercial Transport</i> are bus drivers and train drivers. However, the category also includes driving schools, police patrols and certain other jobs. [Danish: erhvervstransport]
Journey	A <i>Journey</i> is defined as the entire chain from home, return home. Each <i>Journey</i> consists of at least 2 trips : outbound and homebound. [Danish: rejse]
Means (of transport)	The individual, physical vehicle of transport: "My red bicycle".
Mode (of transport)	Generic classification of transport modes: buses, trains etc.
Primary Destination	The <i>Primary Destination</i> of a journey is defined by the stay with the longest dwell time. [Danish: primært ophold]
Primary Mode	The <i>Primary Mode</i> of a trip or journey is the mode of transport with the greatest, aggregated, travel distance. [Danish: primært transportmiddel]
Primary Purpose	The <i>Primary Purpose</i> of a journey is defined as the purpose at the primary destination , ie. the stay with the greatest dwell time. [Danish: primært formål]
Train	The category <i>Train</i> includes all railborne modes of transport, including Metro and Light Rail/Trams. [Danish: tog]
Trip	A <i>Trip</i> is defined as the movement from one destination to the next. A <i>Trip</i> applies one or more means of transport. [Danish: tur]
Trip Purpose	The <i>Trip Purpose</i> is defined as the purpose at the end of the trip , directing towards the primary destination of the journey . [Danish: turformål]

Main results

Table 2: Key figures, by gender

	Women	Men	Total >= 6y	
Average, total number of trips	3.1	3.2	3.2	trips per person per day
- excl. commercial transport	3.1	3.0	3.1	trips per person per day
Nonmobile rate (0 trip rate)	18%	17%	18%	(rate on avg. day)
	Women	Men	Total >= 6y	
Average, total travel time	57.8	60.0	58.9	mins per person per day
	Women	Men	Total >= 6y	
Average, total mileage	32.7	42.3	37.5	km per person per day
- hereof motorized modes	30.0	39.7	34.8	km per person per day
- hereof bicycle	1.2	1.5	1.4	km per person per day
- total, excl. commercial transport	32.6	40.7	36.6	km per person per day
	Women	Men	Total >= 6y	
Avg. trip length, excl. commercial transport	10.4	13.7	12.0	kilometers per trip
	Women	Men	Total	
Bicycle ownership	65.5%	64.9%	65.2%	(share of pop. >=6y)
Driving licence	85.5%	91.2%	88.3%	(share of pop. >=18y)

Modes of transport

Table 3: Mileage and travel time by mode

Mode (excl. commercial transport)	Personal mileage		Vehicle mileage		Travel time	
	km/pers/day	%	km/pers/day	%	mins/pers/day	%
Walk or run	1.3	3.4%			15.9	27.8%
Skateb., roller skates etc.	0.0	0.0%			0.1	0.1%
SUM Walk etc.	1.3	3.4%			16.0	27.9%
Bicycle	1.4	3.8%	1.4	5.8%	5.5	9.7%
Moped 30 km/h	0.0	0.1%	0.0	0.2%	0.1	0.2%
Disability moped (electric)	0.0	0.0%			0.0	0.1%
Electric scooter etc.	0.0	0.0%			0.0	0.1%
SUM Bicycle etc.	1.4	3.9%	1.4	6.0%	5.7	10.0%
Moped 45 km/h	0.0	0.1%	0.0	0.2%	0.1	0.1%
Motorcycle	0.1	0.2%	0.1	0.2%	0.1	0.1%
Passenger car	26.8	73.2%	19.7	83.6%	28.3	49.5%
Taxi cab	0.1	0.2%			0.1	0.2%
Van	2.1	5.8%	2.0	8.3%	1.8	3.1%
Lorry	0.5	1.4%	0.4	1.6%	0.3	0.4%
Tractor, working vehicle	0.0	0.1%	0.0	0.1%	0.0	0.1%
Tourist coach, rented bus	0.5	1.5%	0.0	0.1%	0.5	0.8%
SUM Car etc.	30.2	82.4%	22.2	94.0%	31.1	54.4%
Collective, public bus	0.7	1.8%			1.5	2.5%
Dial-a-ride, flex. transport	0.1	0.3%			0.1	0.2%
SUM Collective road	0.8	2.2%			1.6	2.8%
S-train (Cph suburban rail)	0.6	1.7%			0.8	1.4%
Copenhagen Metro	0.1	0.4%			0.3	0.4%
Light rail / tram	0.0	0.1%			0.1	0.1%
Other train	2.0	5.3%			1.3	2.2%
SUM Train	2.7	7.5%			2.4	4.2%
Horse carriage, horse	0.0	0.0%			0.0	0.1%
Ferry, water bus	0.1	0.4%			0.2	0.4%
Leisure boat	0.0	0.1%			0.2	0.3%
Airplane	0.1	0.2%			0.0	0.0%
SUM Other	0.2	0.6%			0.4	0.8%
Total	36.6	100%	23.6	100%	57.3	100%

Table 4: Modal split, journeys by mode chain type

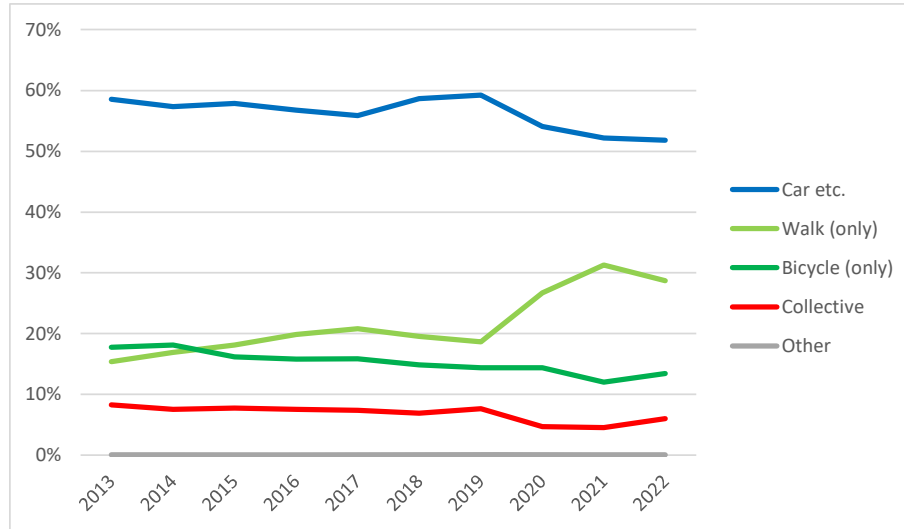
Journey chain type (incl. commercial transport)	All journeys		Journeys <10km		Travel time	
	pr pers pr day	%	pr pers pr day	%	mins/pers/day	%
Walk (only)	0.37	28.7%	0.36	52.1%	11.8	19.9%
Bicycle (only)	0.17	13.4%	0.13	18.4%	5.5	9.4%
Car etc. as driver	0.51	40.0%	0.14	20.6%	25.2	42.7%
Car etc. as passenger	0.15	12.0%	0.05	7.4%	7.8	13.2%
SUM Car etc.	0.67	52.0%	0.19	28.0%	33.0	55.9%
Train	0.02	1.3%	0.00	0.6%	1.5	2.5%
Collective bus	0.02	1.3%	0.00	0.6%	1.4	2.4%
Train + bus in combination	0.01	0.8%	0.00	0.1%	1.5	2.6%
Train/bus comb. w/bicycle	0.01	1.0%	0.00	0.0%	1.5	2.6%
Train/bus comb. w/car	0.02	1.4%	0.00	0.2%	2.5	4.2%
SUM Collective	0.07	5.8%	0.01	1.4%	8.5	14.4%
Other	0.00	0.1%	0.00	0.0%	0.2	0.3%
Total	1.28	100%	0.70	100%	58.9	100%

Table 5: Time series, modal split, journeys by chain type group
(population 10-84 years of age, journey modal split with confidence intervals)

	Walk	Bicycle	Car etc.	Collective	Other
2013	15.4% ±1.0%	17.7% ±0.9%	58.6% ±1.1%	8.3% ±0.6%	0.1% ±0.0%
2014	16.9% ±0.9%	18.1% ±0.8%	57.3% ±1.1%	7.6% ±0.5%	0.1% ±0.1%
2015	18.1% ±1.0%	16.2% ±0.9%	57.9% ±1.1%	7.7% ±0.5%	0.1% ±0.1%
2016	19.9% ±1.0%	15.8% ±0.8%	56.7% ±1.1%	7.5% ±0.5%	0.1% ±0.1%
2017	20.8% ±0.9%	15.9% ±0.8%	55.9% ±1.1%	7.4% ±0.5%	0.1% ±0.0%
2018	19.5% ±1.0%	14.9% ±0.8%	58.7% ±1.2%	6.9% ±0.5%	0.0% ±0.0%
2019	18.7% ±0.9%	14.4% ±0.8%	59.2% ±1.0%	7.6% ±0.5%	0.1% ±0.0%
2020	26.7% ±0.8%	14.4% ±0.6%	54.1% ±0.8%	4.7% ±0.4%	0.1% ±0.1%
2021	31.3% ±1.1%	12.0% ±0.7%	52.2% ±1.1%	4.5% ±0.4%	0.1% ±0.0%
2022	28.7% ±1.1%	13.4% ±0.8%	51.8% ±1.1%	6.0% ±0.5%	0.1% ±0.1%

Figure 6: Time series, modal split, journeys by chain type group

Graphical illustration of table 5, above.



Modal Split is reported at the journey level, because the choice of bicycle or car generally applies to the entire journey from home, until return home. Collective Transport is reported as such, including any intermediate walking trips on the journey.

Figure 7: Time series, collective share of journeys

Graphical illustration of collective (public) transport share of journeys, from table 5 above.

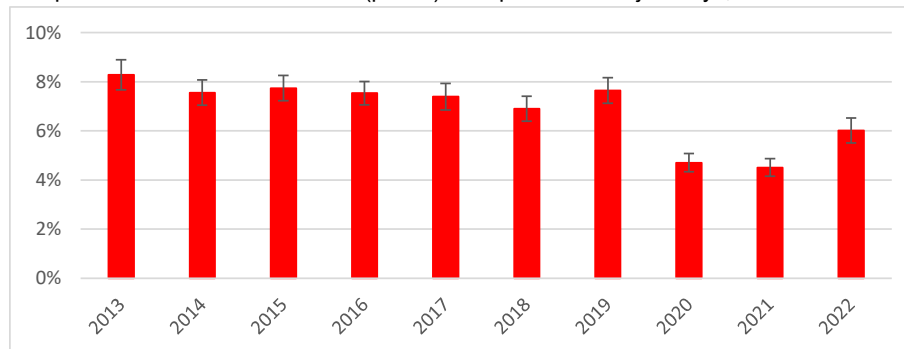


Table 8: Time series, modal split by mileage

(population 10-84 years of age, modal split by mileage with confidence intervals)

	Walk etc.	Bicycle etc.	Car etc.	Collect. bus	Train	Other
2013	2.0% ±0.1%	4.2% ±0.3%	82.3% ±1.3%	3.1% ±0.5%	7.8% ±1.1%	0.6% ±0.3%
2014	2.1% ±0.1%	4.5% ±0.3%	82.8% ±1.3%	2.9% ±0.4%	7.1% ±1.0%	0.6% ±0.3%
2015	2.2% ±0.1%	4.0% ±0.3%	82.6% ±1.5%	3.0% ±0.5%	7.2% ±1.2%	1.0% ±0.4%
2016	2.3% ±0.2%	3.9% ±0.3%	82.6% ±1.4%	3.2% ±0.6%	7.4% ±1.2%	0.5% ±0.3%
2017	2.4% ±0.1%	4.0% ±0.3%	83.0% ±1.3%	2.9% ±0.4%	7.0% ±1.2%	0.6% ±0.3%
2018	2.1% ±0.1%	3.5% ±0.3%	84.2% ±1.4%	2.6% ±0.4%	6.8% ±1.2%	0.7% ±0.3%
2019	2.1% ±0.1%	3.3% ±0.3%	84.1% ±1.1%	2.9% ±0.5%	6.7% ±1.0%	0.9% ±0.4%
2020	3.3% ±0.1%	4.1% ±0.3%	85.5% ±0.9%	1.8% ±0.4%	4.7% ±0.8%	0.6% ±0.3%
2021	4.2% ±0.2%	3.5% ±0.3%	85.5% ±1.1%	1.9% ±0.4%	4.4% ±0.9%	0.5% ±0.3%
2022	3.3% ±0.2%	3.8% ±0.3%	82.2% ±1.7%	2.5% ±0.5%	7.5% ±1.6%	0.6% ±0.4%

Figure 9: Time series, modal split by mileage (grouped)

Graphical illustration of table 8, above.

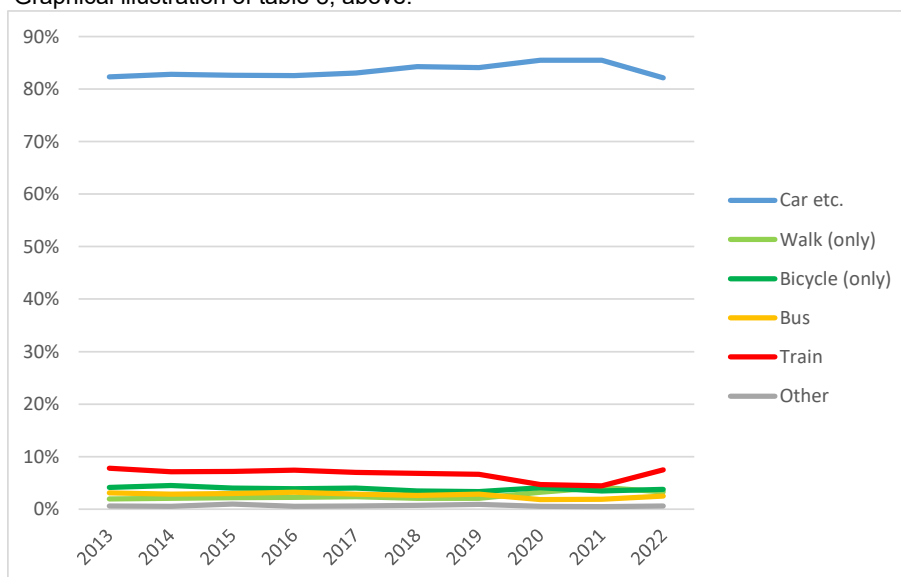


Figure 10: Time series, collective bus market share by mileage

Graphical illustration of collective (public) bus share of mileage (PKM), from table 8

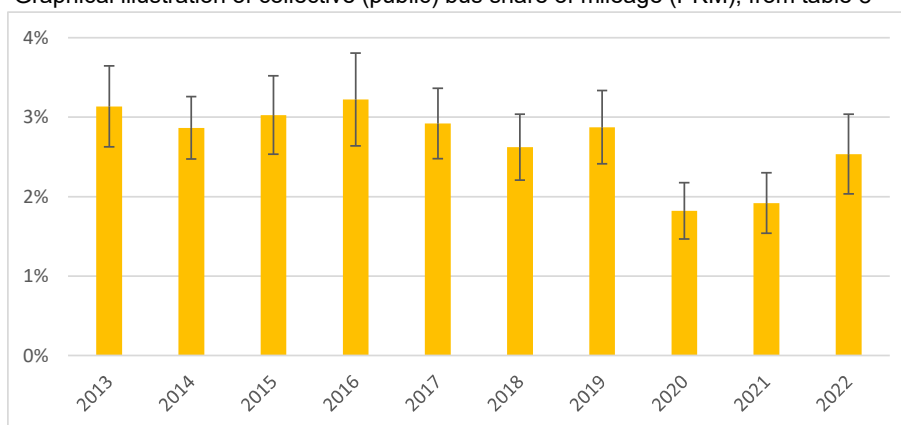


Table 11c: Length and chain type, share of all journeys

Share of journeys	< 2 km	2-3.9 km	4-9.9 km	10-19 km	20-49 km	>= 50 km (*)	SUM
Walk (only)	13.1%	9.6%	5.6%	0.4%	0.0%	0.0%	28.7%
Bicycle (only)	1.8%	3.3%	4.9%	2.5%	0.8%	0.1%	13.4%
SUM Car etc.	1.1%	4.1%	10.1%	10.3%	13.2%	13.2%	52.0%
SUM Collective	0.0%	0.0%	0.8%	1.4%	1.9%	1.7%	5.8%
Total	16.0%	17.1%	21.4%	14.5%	16.0%	15.0%	100%

Table 12: Total road mileage and travel time, sum per day

Defined as trips with course within Denmark, for Danish residents.

(incl. commercial transport)	Personal Mileage (PKM)		Vehicle Mileage (VKM)		Travel time	
	'000 km/day	%	'000 km/day	%	'000 h/day	%
Walk or run	7 009	3.6%			1 478	29.2%
Skateb., roller skates etc.	20	0.0%			6	0.1%
SUM Walk etc.	7 029	3.7%			1 484	29.3%
Bicycle	7 668	4.0%	7 613	5.6%	515	10.2%
Moped 30 km/h	247	0.1%	247	0.2%	10	0.2%
Disability moped (electric)	29	0.0%			4	0.1%
Electric scooter etc.	57	0.0%			3	0.1%
SUM Bicycle etc.	8 001	4.2%	7 860	5.8%	533	10.5%
Moped 45 km/h	216	0.1%	216	0.2%	7	0.1%
Motorcycle	322	0.2%	322	0.2%	6	0.1%
Passenger car	149 504	77.7%	109 960	80.8%	2 631	52.0%
Taxi cab	468	0.2%	144	0.1%	9	0.2%
Van	13 088	6.8%	11 940	8.8%	166	3.3%
Lorry	5 403	2.8%	4 626	3.4%	23	0.5%
Tractor, working vehicle	150	0.1%	146	0.1%	4	0.1%
Tourist coach, rented bus	2 984	1.6%	151	0.1%	45	0.9%
SUM Car etc.	172 134	89.5%	127 505	93.7%	2 892	57.2%
Collective, public bus	4 158	2.2%	434	0.3%	135	2.7%
Dial-a-ride, flex. transport	972	0.5%	286	0.2%	12	0.2%
SUM Collective road	5 130	2.7%	720	0.5%	147	2.9%
Horse carriage, horse	37	0.0%			4	0.1%
Total	192 331	100%	136 085	100%	5 060	100%

Table 12a: Average car occupation in Denmark

The average car occupancy is calculated by dividing passenger mileage with vehicle (driver) mileage from table 12 above. This calculation omits any passengers under 6 years of age.

	PKM	VKM	Avg. car occupation
Passenger car	149 504	109 960	1.36
Van	13 088	11 940	1.10
Passenger car+van+taxi	163 060	122 044	1.34

Purpose

Table 15: Trips, distance and total travel time by purpose

Trips for persons resident in Denmark, as number of trips, personal mileage and total travelttime.

Trip Purpose	Num trips		Mileage (PKM)		Total travel time	
	trips/pers/day	%	km/pers/day	%	mins/pers/day	%
Workplace (commute)	0.48	15.2%	9.3	24.9%	11.9	20.4%
School/educational	0.19	5.9%	1.4	3.7%	3.1	5.3%
SUM Commute	0.67	21.1%	10.7	28.6%	15.1	25.7%
Escorting to/from activity	0.18	5.6%	1.6	4.1%	2.2	3.8%
Escorting to/from transport	0.05	1.4%	0.4	1.1%	0.5	0.9%
Collect/bring objects	0.08	2.4%	0.6	1.6%	1.0	1.7%
Shopping	0.58	18.3%	2.8	7.4%	5.7	9.7%
Social/health	0.06	1.8%	0.8	2.0%	1.1	1.8%
School excursions etc.	0.00	0.1%	0.1	0.4%	0.2	0.3%
Other errand	0.06	1.8%	0.6	1.5%	0.9	1.5%
SUM Errands	1.00	31.5%	6.8	18.1%	11.6	19.8%
Home, perm. residence	0.00	0.2%	0.2	0.6%	0.2	0.3%
After-school, youth club	0.01	0.2%	0.0	0.1%	0.1	0.1%
Nursery, crèche, day care	0.01	0.3%	0.0	0.1%	0.1	0.1%
Visit family/friends	0.29	9.0%	5.9	15.7%	6.9	11.9%
Do sports	0.15	4.6%	1.0	2.6%	1.9	3.3%
Entertainment (incl. church)	0.17	5.4%	2.7	7.2%	3.9	6.6%
Allotment/summer cottage	0.02	0.7%	1.3	3.6%	1.2	2.1%
Leisure round trip	0.43	13.6%	1.1	3.0%	9.9	16.9%
Holiday, excursion	0.11	3.3%	2.3	6.2%	3.3	5.7%
Meetings in private context	0.02	0.7%	0.3	0.9%	0.4	0.7%
Other leisure activity	0.05	1.4%	0.4	1.2%	0.8	1.3%
SUM Leisure	1.25	39.4%	15.4	41.1%	28.8	49.2%
Meetings, conferences	0.02	0.7%	1.0	2.5%	0.8	1.4%
Customer or client visit	0.05	1.5%	1.0	2.7%	0.9	1.5%
Business services, trade	0.04	1.3%	1.3	3.4%	0.9	1.5%
Other business	0.02	0.5%	0.5	1.3%	0.5	0.9%
SUM Business trips	0.13	4.1%	3.7	10.0%	3.1	5.3%
Commercial tr. of goods	0.09	2.9%	0.7	1.8%		
Commercial tr. of persons	0.03	1.0%	0.2	0.4%		
Other commercial transp.	0.00	0.1%	0.0	0.0%		
SUM Commercial Tr.	0.12	3.9%	0.8	2.3%		
Total	3.18	100%	37.5	100%	58.5	100%

The purpose distribution is shown by 2 alternative definitions. By trip purpose above reflects the individual trips and destinations, whereas the journey primary purpose (overleaf) reflects the longest stay on the journey. Travel time for commercial transport has been omitted for technical reasons. This omission induces a small difference in total travel time.

Table 16: Journeys, distance and travel time by primary purpose

Primary purpose (journey)	Journeys		Mileage (PKM)		Total travel time	
	per pers/day	%	km/pers/day	%	mins/pers/day	%
Workplace (commute)	0.23	18.3%	10.9	29.1%	13.8	23.4%
School/educational	0.09	7.0%	1.5	3.9%	3.3	5.6%
SUM Commute	0.32	25.3%	12.4	33.0%	17.0	29.0%
Escorting to/from activity	0.05	3.8%	1.1	2.8%	1.5	2.6%
Escorting to/from transport	0.01	1.0%	0.2	0.7%	0.3	0.6%
Collect/bring objects	0.03	2.1%	0.4	1.2%	0.8	1.3%
Shopping	0.23	18.0%	2.2	5.9%	4.9	8.3%
Social/health	0.02	1.9%	0.8	2.1%	1.0	1.7%
School excursions etc.	0.00	0.1%	0.2	0.4%	0.2	0.4%
Other errand	0.02	1.7%	0.5	1.2%	0.8	1.3%
SUM Errands	0.37	28.5%	5.4	14.3%	9.6	16.3%
Home, perm. residence	0.00	0.3%	0.4	1.0%	0.4	0.6%
After-school, youth club	0.00	0.2%	0.0	0.1%	0.1	0.1%
Nursery, crèche, day care	0.00	0.4%	0.0	0.1%	0.1	0.1%
Visit family/friends	0.12	9.5%	6.2	16.7%	7.6	12.9%
Do sports	0.07	5.2%	0.9	2.5%	1.9	3.2%
Entertainment (incl. church)	0.07	5.5%	2.6	7.0%	3.8	6.5%
Allotment/summer cottage	0.01	0.7%	1.5	4.0%	1.5	2.5%
Leisure round trip	0.21	16.2%	1.0	2.7%	9.4	16.0%
Holiday, excursion	0.04	3.5%	2.5	6.6%	3.4	5.8%
Meetings in private context	0.01	0.7%	0.3	0.9%	0.4	0.7%
Other leisure activity	0.02	1.6%	0.5	1.3%	0.8	1.4%
SUM Leisure	0.56	43.8%	16.0	42.8%	29.4	50.0%
Meetings, conferences	0.01	0.5%	0.9	2.4%	0.8	1.3%
Customer or client visit	0.01	0.6%	0.8	2.1%	0.7	1.2%
Business services, trade	0.01	0.8%	1.2	3.3%	0.9	1.6%
Other business	0.00	0.3%	0.4	1.1%	0.4	0.6%
SUM Business trips	0.03	2.2%	3.3	8.8%	2.7	4.7%
Commercial tr. of goods	0.00	0.1%	0.3	0.9%		
Commercial tr. of persons	0.00	0.0%	0.1	0.1%		
Other commercial transp.	0.00	0.0%	0.0	0.0%		
SUM Commercial Tr.	0.00	0.1%	0.4	1.1%		
Total	1.28	100%	37.4	100%	58.7	100%

Figure 17: Purpose distribution by trips and journeys

Comparison of main totals from table 15 and 16, above.

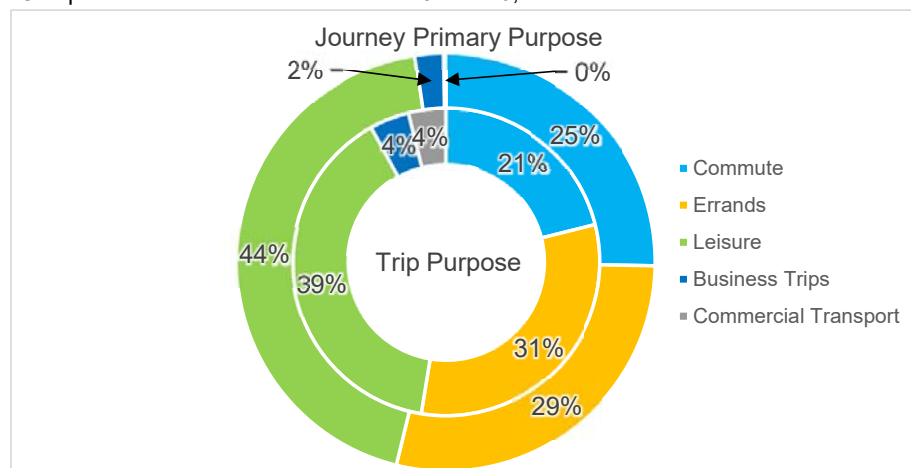


Table 18: Trips by purpose group and mode chain type
(excl. commercial transport)

Trips per person per day	Workplace	Educational	Errands	Leisure	Business	SUM
Walk (only)	0.03	0.04	0.21	0.56	0.00	0.84
Bicycle (only)	0.10	0.06	0.11	0.13	0.01	0.40
Driver of passenger car	0.28	0.01	0.53	0.30	0.06	1.17
Passenger car, passenger	0.01	0.04	0.11	0.20	0.00	0.37
Driver of other vehicle	0.02	0.00	0.01	0.01	0.05	0.10
Passenger in other vehicle	0.00	0.00	0.01	0.01	0.00	0.02
SUM Car etc.	0.32	0.06	0.66	0.51	0.11	1.66
Train	0.01	0.01	0.01	0.02	0.00	0.04
Collective bus	0.01	0.02	0.01	0.02	0.00	0.05
Train + bus in combination	0.01	0.00	0.00	0.01	0.00	0.02
Train/bus comb. w/bicycle	0.01	0.00	0.00	0.00	0.00	0.02
Train/bus comb. w/car	0.00	0.00	0.00	0.01	0.00	0.01
SUM Collective	0.04	0.03	0.02	0.05	0.00	0.15
Other	-	-	-	0.00	0.00	0.00
Total	0.48	0.19	1.00	1.25	0.13	3.05

Table 18a: Purpose distribution for mode chain types

Share of trips w/mode	Workplace	Educational	Errands	Leisure	Business	SUM
Walk (only)	3%	4%	25%	66%	0%	100%
Bicycle (only)	24%	15%	27%	32%	3%	100%
Driver of passenger car	24%	1%	45%	25%	5%	100%
Passenger car, passenger	4%	12%	30%	54%	1%	100%
SUM Car etc.	19%	4%	40%	31%	7%	100%
SUM Collective	30%	21%	13%	32%	3%	100%
Total	16%	6%	33%	41%	4%	100%

Table 18b: Modal split by purpose group

Share of trips w/purpose	Workplace	Educational	Errands	Leisure	Business	SUM
Walk (only)	6%	20%	21%	45%	3%	28%
Bicycle (only)	20%	32%	11%	10%	8%	13%
Driver of passenger car	57%	7%	53%	24%	44%	38%
Passenger car, passenger	3%	23%	11%	16%	2%	12%
Driver of other vehicle	5%	0%	1%	1%	38%	3%
Passenger in other vehicle	0%	2%	1%	1%	2%	1%
SUM Car etc.	65%	32%	66%	41%	86%	54%
Train	3%	3%	1%	1%	1%	1%
Collective bus	2%	9%	1%	1%	0%	2%
Train + bus in combination	1%	1%	0%	0%	0%	1%
Train/bus comb. w/bicycle	3%	3%	0%	0%	1%	1%
Train/bus comb. w/car	1%	1%	0%	0%	1%	0%
SUM Collective	9%	17%	2%	4%	4%	5%
Total	100%	100%	100%	100%	100%	100%

Table 18c: All trips by mode and purpose

Share of total trips	Workplace	Educational	Errands	Leisure	Business	SUM
Walk (only)	0.9%	1.2%	7.0%	18.4%	0.1%	27.6%
Bicycle (only)	3.2%	1.9%	3.5%	4.2%	0.3%	13.2%
SUM Car etc.	10.3%	2.0%	21.6%	16.8%	3.7%	54.3%
SUM Collective	1.4%	1.0%	0.6%	1.6%	0.2%	4.8%
Total	15.8%	6.1%	32.7%	41.0%	4.3%	100%

Table 19: Travel time by purpose group and mode chain type
(excl. commercial transport)

Minutes per person per day	Workplace	Educational	Errands	Leisure	Business	SUM
Walk (only)	0.3	0.4	2.0	10.4	0.1	13.2
Bicycle (only)	1.6	0.6	1.0	2.2	0.1	5.5
Driver of passenger car	7.1	0.3	6.0	7.4	1.2	21.9
Passenger car, passenger	0.3	0.4	1.6	5.1	0.1	7.4
Driver of other vehicle	0.4	0.0	0.2	0.3	1.1	2.1
Passenger in other vehicle	0.0	0.1	0.2	0.4	0.1	0.8
SUM Car etc.	7.8	0.8	7.9	13.1	2.6	32.2
Train	0.6	0.2	0.2	0.7	0.1	1.9
Collective bus	0.3	0.6	0.3	0.7	0.0	1.9
Train + bus in combination	0.4	0.1	0.2	0.5	0.0	1.2
Train/bus comb. w/bicycle	0.7	0.2	0.0	0.3	0.1	1.3
Train/bus comb. w/car	0.2	0.1	0.0	0.6	0.1	1.1
SUM Collective	2.2	1.3	0.7	2.8	0.4	7.4
Other	-	-	-	0.2	0.0	0.2
Total	11.9	3.1	11.6	28.8	3.1	58.5

Table 19a: Distribution, travel time for each mode chain type

Share of time w/chain type	Workplace	Educational	Errands	Leisure	Business	SUM
Walk (only)	3%	3%	15%	79%	0%	100%
Bicycle (only)	30%	11%	18%	39%	2%	100%
Driver of passenger car	32%	1%	27%	34%	6%	100%
Passenger car, passenger	3%	6%	21%	68%	1%	100%
SUM Car etc.	24%	3%	25%	41%	8%	100%
SUM Collective	30%	17%	10%	39%	5%	100%
Total	20%	5%	20%	49%	5%	100%

Table 19b: Distribution, travel time for each purpose group

Share of travel time w/purp	Workplace	Educational	Errands	Leisure	Business	SUM
Walk (only)	3%	12%	17%	36%	2%	23%
Bicycle (only)	14%	20%	8%	8%	3%	9%
Driver of passenger car	59%	10%	51%	26%	40%	37%
Passenger car, passenger	2%	13%	13%	18%	3%	13%
Driver of other vehicle	3%	0%	2%	1%	37%	4%
Passenger in other vehicle	0%	3%	2%	1%	3%	1%
SUM Car etc.	65%	27%	68%	46%	84%	55%
Train	5%	7%	2%	3%	3%	3%
Collective bus	3%	19%	2%	2%	0%	3%
Train + bus in combination	3%	3%	1%	2%	2%	2%
Train/bus comb. w/bicycle	6%	7%	0%	1%	2%	2%
Train/bus comb. w/car	2%	4%	0%	2%	5%	2%
SUM Collective	18%	41%	6%	10%	11%	13%
Total	100%	100%	100%	100%	100%	100%

Table 19c: Distribution, total travel time

Share of total travel time	Workplace	Educational	Errands	Leisure	Business	SUM
Walk (only)	0.6%	0.7%	3.4%	17.8%	0.1%	22.5%
Bicycle (only)	2.8%	1.1%	1.7%	3.7%	0.1%	9.4%
SUM Car etc.	13.3%	1.4%	13.5%	22.4%	4.4%	55.0%
SUM Collective	3.7%	2.2%	1.3%	4.9%	0.6%	12.6%
Total	20.4%	5.3%	19.8%	49.2%	5.3%	100%

Table 20c: Distribution, mileage by mode and purpose group
(excl. commercial transport)

Share mileage (PKM)	Workplace	Educational	Errands	Leisure	Business	SUM
Walk or run	0.2%	0.2%	0.5%	2.5%	0.0%	3.4%
Skateb., roller skates etc.	0.0%	0.0%	0.0%	0.0%	-	0.0%
SUM Walk etc.	0.2%	0.2%	0.5%	2.5%	0.0%	3.4%
Bicycle	1.3%	0.4%	0.6%	1.4%	0.1%	3.8%
Moped 30 km/h	0.0%	0.0%	0.0%	0.0%	0.0%	0.1%
Disability moped (electric)	0.0%	-	0.0%	0.0%	-	0.0%
Electric scooter etc.	0.0%	0.0%	0.0%	0.0%	0.0%	0.0%
SUM Bicycle etc.	1.4%	0.4%	0.6%	1.4%	0.1%	3.9%
Moped 45 km/h	0.0%	-	0.0%	0.1%	-	0.1%
Motorcycle	0.1%	-	0.0%	0.1%	-	0.2%
Passenger car	19.8%	1.6%	15.9%	31.9%	4.0%	73.2%
Taxi cab	0.0%	0.0%	0.0%	0.1%	0.0%	0.2%
Van	0.9%	0.0%	0.5%	0.6%	3.8%	5.8%
Lorry	0.1%	-	0.0%	0.4%	0.9%	1.4%
Tractor, working vehicle	0.0%	0.0%	-	0.0%	0.1%	0.1%
Tourist coach, rented bus	0.0%	0.2%	0.4%	0.7%	0.2%	1.5%
SUM Car etc.	21.0%	1.9%	16.8%	33.7%	9.0%	82.4%
Collective, public bus	0.3%	0.6%	0.2%	0.7%	0.0%	1.8%
Dial-a-ride, flex. transport	0.0%	0.1%	0.0%	0.2%	-	0.3%
SUM Collective road	0.3%	0.6%	0.2%	1.0%	0.0%	2.2%
S-train (Cph suburban rail)	0.8%	0.1%	0.1%	0.5%	0.1%	1.7%
Copenhagen Metro	0.1%	0.0%	0.1%	0.2%	0.0%	0.4%
Light rail / tram	0.0%	0.0%	0.0%	0.0%	0.0%	0.1%
Other train	1.6%	0.5%	0.2%	2.3%	0.7%	5.3%
SUM Train	2.5%	0.7%	0.4%	3.0%	0.9%	7.5%
Horse carriage, horse	-	-	-	0.0%	-	0.0%
Ferry, water bus	0.0%	0.0%	0.0%	0.3%	0.0%	0.4%
Leisure boat	-	-	-	0.1%	-	0.1%
Airplane	-	-	-	-	0.2%	0.2%
SUM Other	0.0%	0.0%	0.0%	0.4%	0.2%	0.6%
Total	25.4%	3.8%	18.6%	42.0%	10.2%	100%

Figure 21: Mileage by purpose group
(mileage (PKM), trip purpose excl. commercial transport)

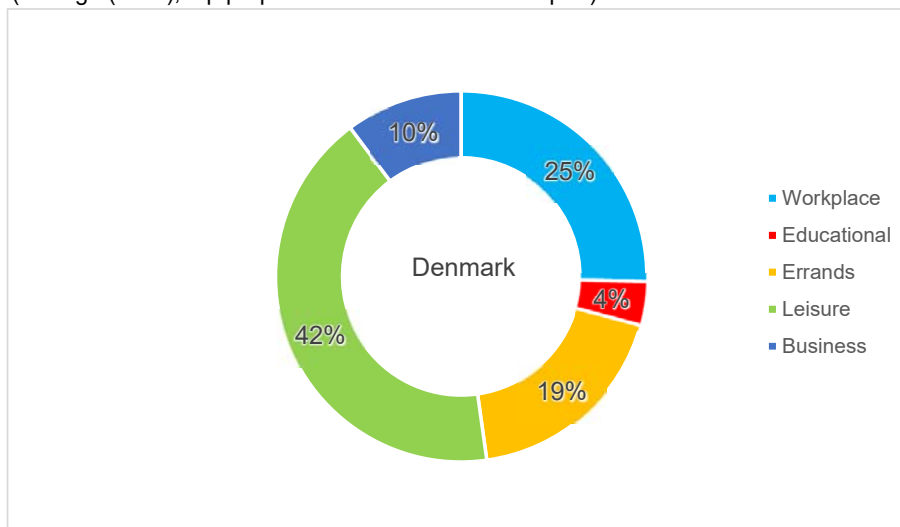


Table 22: Vehicle mileage by mode and purpose group

(persons resident in Denmark, drivers purpose, road traffic excl. commercial transport)

km per person per day	Workplace	Educational	Errands	Leisure	Business	SUM
Bicycle	0.5	0.1	0.2	0.5	0.0	1.4
Moped 30 km/h	0.0	0.0	0.0	0.0	0.0	0.0
Disability moped (electric)	0.0	-	0.0	0.0	-	0.0
Electric scooter etc.	0.0	0.0	0.0	0.0	0.0	0.0
SUM Bicycle etc.	0.5	0.2	0.2	0.5	0.0	1.4
Moped 45 km/h	0.0	-	0.0	0.0	-	0.0
Motorcycle	0.0	-	0.0	0.0	-	0.1
Passenger car	7.0	0.3	4.5	6.6	1.3	19.7
Taxi cab	-	-	-	-	-	-
Van	0.3	0.0	0.2	0.2	1.3	2.0
Lorry	0.0	-	0.0	0.0	0.3	0.4
Tractor, working vehicle	0.0	-	-	0.0	0.0	0.0
Tourist coach, rented bus	-	-	-	-	0.0	0.0
SUM Car etc.	7.4	0.3	4.7	6.9	3.0	22.2
Total	7.9	0.5	4.9	7.4	3.0	23.6

Table 22a: Distribution, vehicle mileage for each mode

Share mileage w/mode	Workplace	Educational	Errands	Leisure	Business	SUM
SUM Bicycle etc.	35%	11%	16%	36%	2%	100%
Passenger car	35%	2%	23%	34%	7%	100%
Van	16%	0%	8%	10%	66%	100%
SUM Car etc.	33%	1%	21%	31%	14%	100%
Total	33%	2%	21%	31%	13%	100%

Table 22b: Distribution, vehicle mileage for each purpose group

Share mileage w/purpose	Workplace	Educational	Errands	Leisure	Business	SUM
Bicycle	6%	32%	4%	7%	1%	6%
Moped 30 km/h	0%	2%	0%	0%	0%	0%
Disability moped (electric)	0%	-	0%	0%	-	0%
Electric scooter etc.	0%	0%	0%	0%	0%	0%
SUM Bicycle etc.	6%	34%	5%	7%	1%	6%
Moped 45 km/h	0%	-	0%	0%	-	0%
Motorcycle	0%	-	0%	0%	-	0%
Passenger car	89%	66%	92%	90%	44%	83%
Van	4%	1%	3%	3%	42%	8%
SUM Car etc.	94%	66%	95%	93%	99%	94%
Total	100%	100%	100%	100%	100%	100%

Table 22c: Distribution, vehicle mileage

Share of total mileage	Workplace	Educational	Errands	Leisure	Business	SUM
Bicycle	2.1%	0.6%	0.9%	2.1%	0.1%	5.8%
Moped 30 km/h	0.0%	0.0%	0.1%	0.1%	0.0%	0.2%
Disability moped (electric)	0.0%	-	0.0%	0.0%	-	0.0%
Electric scooter etc.	0.0%	0.0%	0.0%	0.0%	0.0%	0.0%
SUM Bicycle etc.	2.1%	0.6%	1.0%	2.2%	0.1%	6.0%
Moped 45 km/h	0.0%	-	0.0%	0.1%	-	0.2%
Motorcycle	0.2%	-	0.0%	0.1%	-	0.2%
Passenger car	29.4%	1.3%	19.0%	28.1%	5.7%	83.5%
Van	1.3%	0.0%	0.7%	0.8%	5.5%	8.3%
Lorry	0.2%	-	0.0%	0.0%	1.4%	1.6%
Tractor, working vehicle	0.0%	-	-	0.0%	0.1%	0.1%
Tourist coach, rented bus	-	-	-	-	0.1%	0.1%
SUM Car etc.	31.1%	1.3%	19.7%	29.1%	12.8%	94.0%
Total	33.2%	1.9%	20.7%	31.3%	12.9%	100%

Table 23: Journeys by purpose group and mode chain type

Journeys per person per day	Workplace	Educational	Errands	Leisure	Business	SUM
Walk (only)	0.01	0.01	0.09	0.25	0.00	0.37
Bicycle (only)	0.05	0.03	0.04	0.06	0.00	0.17
Driver of passenger car	0.13	0.01	0.19	0.14	0.01	0.48
Passenger car, passenger	0.01	0.02	0.04	0.08	0.00	0.15
Driver of other vehicle	0.01	0.00	0.01	0.01	0.01	0.04
Passenger in other vehicle	0.00	0.00	0.00	0.00	0.00	0.01
SUM Car etc.	0.15	0.03	0.23	0.23	0.03	0.67
Train	0.01	0.00	0.00	0.01	0.00	0.02
Collective bus	0.00	0.01	0.00	0.00	0.00	0.02
Train + bus in combination	0.00	0.00	0.00	0.00	0.00	0.01
Train/bus comb. w/bicycle	0.01	0.00	0.00	0.00	0.00	0.01
Train/bus comb. w/car	0.01	0.00	0.00	0.01	0.00	0.02
SUM Collective	0.02	0.02	0.01	0.02	0.00	0.07
Other	-	-	-	0.00	0.00	0.00
Total	0.23	0.09	0.37	0.56	0.03	1.28

Table 23a: Distribution journey count for each mode

Share journeys w/mode	Workplace	Educational	Errands	Leisure	Business	SUM
Walk (only)	3%	4%	24%	69%	0%	100%
Bicycle (only)	28%	17%	22%	33%	1%	100%
Driver of passenger car	28%	1%	39%	29%	3%	100%
Passenger car, passenger	3%	14%	25%	56%	0%	100%
SUM Car etc.	23%	4%	35%	34%	4%	100%
SUM Collective	33%	23%	10%	32%	3%	100%
Total	18%	7%	29%	44%	2%	100%

Table 23b: Modal split (journeys) by purpose groups

Share journeys w/purpose	Workplace	Educational	Errands	Leisure	Business	SUM
Walk (only)	4%	16%	24%	45%	3%	29%
Bicycle (only)	20%	32%	10%	10%	5%	13%
Driver of passenger car	57%	7%	51%	24%	40%	37%
Passenger car, passenger	2%	23%	10%	15%	2%	11%
Driver of other vehicle	5%	0%	1%	1%	42%	3%
Passenger in other vehicle	0%	2%	0%	1%	2%	1%
SUM Car etc.	65%	33%	63%	40%	86%	52%
Train	2%	2%	1%	1%	1%	1%
Collective bus	1%	7%	1%	1%	0%	1%
Train + bus in combination	1%	1%	0%	1%	0%	1%
Train/bus comb. w/bicycle	3%	3%	0%	0%	2%	1%
Train/bus comb. w/car	2%	5%	0%	1%	2%	1%
SUM Collective	10%	19%	2%	4%	7%	6%
Total	100%	100%	100%	100%	100%	100%

Table 23c: Distribution, all journeys

Share of all journeys	Workplace	Educational	Errands	Leisure	Business	SUM
Walk (only)	0.8%	1.1%	7.0%	19.8%	0.1%	28.7%
Bicycle (only)	3.7%	2.2%	3.0%	4.4%	0.1%	13.4%
SUM Car etc.	11.9%	2.3%	18.1%	17.7%	2.0%	52.0%
SUM Collective	1.9%	1.3%	0.6%	1.8%	0.2%	5.8%
Total	18.3%	7.0%	28.5%	43.8%	2.4%	100%

Commuting

Table 24: Commuter journeys by chaintype

Journeys with primary purpose workplace or education, by mode chain type.

Share of commuter journeys	Workplace	Educational	Commute total
Walk (only)	4.5%	16.2%	7.7%
Bicycle (only)	20.2%	31.9%	23.5%
Driver of passenger car	57.5%	7.2%	43.5%
Passenger car, passenger	2.2%	23.5%	8.1%
Driver of other vehicle	0.1%	1.6%	0.5%
Non-collective bus	4.9%	0.2%	3.6%
Passenger in other vehicle	0.3%	0.5%	0.4%
SUM Car etc.	65.0%	32.9%	56.1%
Train	2.4%	2.4%	2.4%
Collective bus	1.3%	7.3%	3.0%
Train + bus in combination	1.5%	1.2%	1.4%
Train/bus comb. w/bicycle	3.0%	2.7%	2.9%
Train/bus comb. w/car	2.1%	5.4%	3.1%
SUM Collective	10.3%	19.0%	12.8%
Other	-	-	-
Total	100%	100%	100%

Extract defined as journeys with primary target workplace or educational place. This includes journeys with business trip or school excursions, if the permanent commuter destination is the primary target on the journey. Notice, that the primary target is defined as the destination with the longest dwell time.

Table 25: Time series, modal split, workplace commuting

Journeys with primary target workplace for Danish residents, by mode chain group. Calculated on basis of persons 10-84 years of age, with confidence interval.

	Walk	Bicycle	Car etc.	Collective	Other
2013	3.1% ±0.9%	21.9% ±1.8%	63.2% ±1.8%	11.7% ±1.4%	0.0% ±0.0%
2014	3.6% ±0.8%	21.9% ±1.8%	63.5% ±2.1%	11.0% ±1.4%	0.0% ±0.1%
2015	3.4% ±0.8%	20.0% ±1.9%	65.6% ±2.0%	11.1% ±1.4%	-
2016	3.3% ±0.8%	19.9% ±1.6%	64.9% ±1.8%	11.8% ±1.2%	-
2017	3.8% ±0.8%	20.5% ±1.7%	65.9% ±2.1%	9.8% ±1.4%	0.0% ±0.0%
2018	3.4% ±0.7%	19.9% ±1.7%	68.3% ±2.0%	8.4% ±1.1%	-
2019	4.8% ±1.1%	18.2% ±1.9%	66.8% ±2.0%	10.2% ±1.3%	-
2020	4.5% ±1.0%	19.4% ±1.7%	69.6% ±2.0%	6.5% ±1.1%	0.0% ±0.1%
2021	4.0% ±0.9%	16.8% ±1.6%	71.7% ±1.9%	7.4% ±1.2%	0.0% ±0.0%
2022	4.4% ±1.1%	20.2% ±1.9%	65.2% ±2.1%	10.3% ±1.4%	-

Figure 26: Time series, commuter modal split

Illustration of table 25, above.

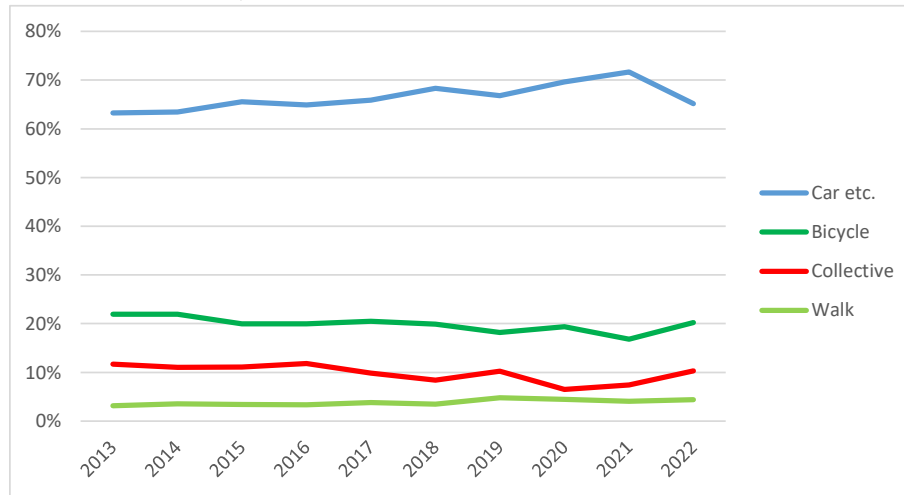


Figure 27: Collective share of workplace commuting

Illustration of collective commuter journeys from table 25, above, with confidence interval.

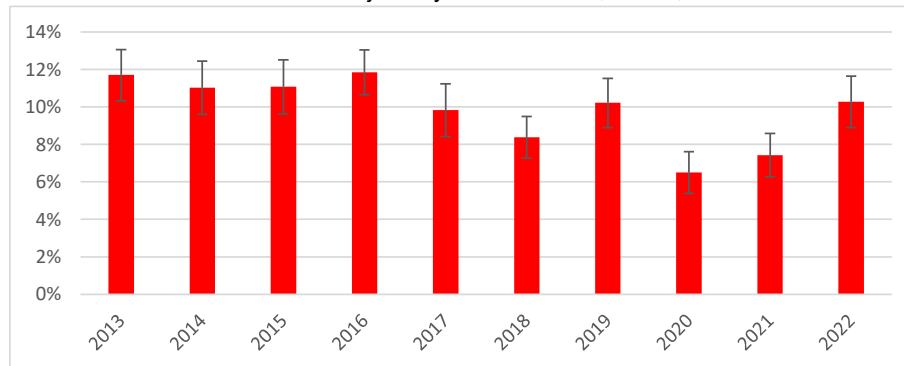


Table 31: Age groups, mileage by mode

km per person per day, excl. commerc. transp.	6-17 yrs	18-30 yrs	31-50 yrs	51-65 yrs	>=66 yrs
Walk or run	1.0	1.4	1.2	1.3	1.3
Skateb., roller skates etc.	0.0	0.0	0.0	0.0	-
SUM Walk etc.	1.0	1.4	1.2	1.3	1.3
Bicycle	1.2	1.5	1.7	1.5	0.8
Moped 30 km/h	0.1	0.0	0.0	0.1	0.0
Disability moped (electric)	-	-	0.0	0.0	0.0
Electric scooter etc.	0.0	0.0	0.0	0.0	-
SUM Bicycle etc.	1.4	1.6	1.7	1.5	0.8
Moped 45 km/h	-	0.0	0.0	0.0	0.1
Motorcycle	-	0.0	0.1	0.1	0.0
Passenger car	15.2	26.8	34.1	35.2	15.2
Taxi cab	0.1	0.0	0.1	0.1	0.0
Van	0.1	2.3	3.2	3.6	0.3
Lorry	-	0.2	0.9	1.0	0.0
Tractor, working vehicle	0.0	0.0	0.0	0.1	0.0
Tourist coach, rented bus	0.9	0.5	0.7	0.2	0.5
SUM Car etc.	16.3	29.7	39.2	40.3	16.1
Collective, public bus	1.6	1.1	0.3	0.4	0.3
Dial-a-ride, flex. transport	0.4	0.3	-	0.0	0.0
SUM Collective road	2.1	1.4	0.3	0.5	0.3
S-train (Cph suburban rail)	0.4	0.8	1.0	0.5	0.1
Copenhagen Metro	0.2	0.3	0.2	0.1	0.0
Light rail / tram	0.0	0.1	0.0	0.0	0.0
Other train	1.4	3.8	1.9	2.1	0.5
SUM Train	2.0	5.0	3.1	2.7	0.7
Horse carriage, horse	-	-	0.0	-	-
Ferry, water bus	0.1	0.2	0.1	0.1	0.1
Leisure boat	0.0	0.0	0.0	0.0	-
Airplane	-	-	0.2	-	-
SUM Other	0.2	0.2	0.4	0.1	0.1
Total	22.9	39.3	45.8	46.5	19.4

Table 31a: Age groups, modal split (PKM)

Share of personal mileage	6-17 yrs	18-30 yrs	31-50 yrs	51-65 yrs	>=66 yrs
SUM Walk etc.	4%	4%	3%	3%	7%
SUM Bicycle etc.	6%	4%	4%	3%	4%
Moped 45 km/h	-	0%	0%	0%	1%
Motorcycle	-	0%	0%	0%	0%
Passenger car	66%	68%	74%	76%	78%
Taxi cab	1%	0%	0%	0%	0%
Van	0%	6%	7%	8%	1%
Lorry	-	0%	2%	2%	0%
Tractor, working vehicle	0%	0%	0%	0%	0%
Tourist coach, rented bus	4%	1%	2%	0%	3%
SUM Car etc.	71%	76%	85%	87%	83%
SUM Collective road	9%	4%	1%	1%	2%
S-train (Cph suburban rail)	2%	2%	2%	1%	1%
Metro + Light rail	1%	2%	1%	1%	0%
Other train	6%	10%	4%	4%	3%
SUM Train	9%	13%	7%	6%	3%
SUM Other	1%	1%	1%	0%	1%
Total	100%	100%	100%	100%	100%

Table 32: Age groups, journeys by chain type

Journeys per person per day	6-17 yrs	18-30 yrs	31-50 yrs	51-65 yrs	>=66 yrs
Walk (only)	0.28	0.43	0.34	0.35	0.45
Bicycle (only)	0.27	0.18	0.17	0.16	0.11
Car etc. as driver	0.00	0.43	0.78	0.69	0.40
Car etc. as passenger	0.48	0.13	0.08	0.09	0.11
SUM Car etc.	0.48	0.56	0.86	0.78	0.51
Train	0.02	0.03	0.02	0.01	0.01
Collective bus	0.05	0.02	0.01	0.01	0.01
Train + bus in combination	0.02	0.02	0.01	0.01	0.00
Train/bus comb. w/bicycle	0.01	0.02	0.02	0.01	0.00
Train/bus comb. w/car	0.04	0.03	0.02	0.01	0.01
SUM Collective	0.13	0.12	0.07	0.05	0.02
Other	0.00	0.00	0.00	0.00	-
Total	1.16	1.28	1.44	1.33	1.09

Table 32a: Age groups, modal split (journeys)

Share of journeys	6-17 yrs	18-30 yrs	31-50 yrs	51-65 yrs	>=66 yrs
Walk (only)	24.1%	33.5%	23.3%	26.0%	41.5%
Bicycle (only)	23.1%	14.0%	12.1%	11.7%	10.2%
Car etc. as driver	0.3%	33.3%	53.9%	51.7%	36.5%
Car etc. as passenger	41.1%	10.0%	5.7%	6.6%	10.1%
SUM Car etc.	41.4%	43.2%	59.6%	58.4%	46.6%
Train	1.3%	2.5%	1.3%	0.9%	0.5%
Collective bus	4.5%	1.5%	0.6%	0.7%	0.6%
Train + bus in combination	1.3%	1.5%	0.7%	0.6%	0.2%
Train/bus comb. w/bicycle	1.0%	1.6%	1.2%	0.9%	0.1%
Train/bus comb. w/car	3.2%	2.1%	1.1%	0.9%	0.5%
SUM Collective	11.3%	9.2%	4.9%	3.9%	1.8%
Other	0.1%	0.1%	0.1%	0.0%	-
Total	100%	100%	100%	100%	100%

Table 33: Age groups, journey primary purpose

Share of journeys	6-17 yrs	18-30 yrs	31-50 yrs	51-65 yrs	>=66 yrs
Workplace (commute)	2.2%	21.6%	26.7%	25.4%	1.2%
School/educational	39.7%	9.6%	0.4%	0.1%	-
SUM Commute	41.9%	31.2%	27.1%	25.5%	1.2%
SUM Errands	10.5%	23.9%	34.3%	27.4%	39.7%
Home, perm. residence	0.7%	0.3%	0.1%	0.3%	0.0%
After-school, youth club	1.3%	-	-	-	-
Nursery, crèche, day care	2.8%	-	-	-	-
Visit family/friends	10.6%	11.3%	7.0%	8.7%	12.7%
Do sports	9.4%	7.0%	3.9%	4.0%	4.0%
Entertainment (incl. church)	5.5%	7.7%	5.3%	4.6%	5.1%
Allotment/summer cottage	0.6%	0.2%	0.6%	0.9%	1.3%
Leisure round trip	8.0%	11.4%	13.6%	19.5%	28.5%
Holiday, excursion	6.3%	3.3%	3.2%	2.7%	3.0%
Meetings in private context	0.5%	0.6%	0.6%	0.7%	1.0%
Other leisure activity	1.6%	1.1%	1.1%	1.7%	2.7%
SUM Leisure	47.4%	43.0%	35.4%	43.3%	58.3%
SUM Business trips	0.1%	1.8%	3.1%	3.5%	0.7%
SUM Commercial Tr.	0.1%	0.1%	0.1%	0.3%	0.0%
Total	100%	100%	100%	100%	100%

Table 34: Occupation groups, mileage by mode

km per person per day, excl. commerc. transp.	Students	Earners	Unemployed	Pensioners	Average
Walk or run	1.2	1.2	1.5	1.4	1.3
Skateb., roller skates etc.	0.0	0.0	-	-	0.0
SUM Walk etc.	1.2	1.2	1.5	1.4	1.3
Bicycle	1.4	1.7	0.6	0.8	1.4
Moped 30 km/h	0.1	0.0	0.1	0.0	0.0
Disability moped (electric)	-	0.0	-	0.0	0.0
Electric scooter etc.	0.0	0.0	0.0	-	0.0
SUM Bicycle etc.	1.5	1.7	0.7	0.9	1.4
Moped 45 km/h	0.0	0.0	-	0.1	0.0
Motorcycle	-	0.1	0.0	-	0.1
Passenger car	17.9	36.7	17.9	16.2	26.8
Taxi cab	0.1	0.1	0.0	0.0	0.1
Van	0.2	4.1	0.2	0.3	2.1
Lorry	0.0	1.0	-	0.0	0.5
Tractor, working vehicle	0.0	0.0	-	0.0	0.0
Tourist coach, rented bus	0.9	0.5	0.2	0.4	0.5
SUM Car etc.	19.1	42.5	18.3	17.1	30.2
SUM Collective road	2.2	0.5	0.3	0.3	0.8
S-train (Cph suburban rail)	0.6	0.9	0.1	0.1	0.6
Copenhagen Metro	0.2	0.1	0.1	0.0	0.1
Light rail / tram	0.0	0.0	0.0	0.0	0.0
Other train	1.8	2.8	1.0	0.5	2.0
SUM Train	2.7	3.9	1.2	0.6	2.7
Horse carriage, horse	-	0.0	-	-	0.0
Ferry, water bus	0.1	0.2	0.1	0.1	0.1
Leisure boat	0.0	0.0	-	0.0	0.0
Airplane	-	0.1	-	-	0.1
SUM Other	0.1	0.3	0.1	0.1	0.2
Total	26.8	50.1	22.1	20.4	36.6

Table 34a: Occupation groups, modal split (PKM)

Share of personal mileage	Students	Earners	Unemployed	Pensioners	Average
SUM Walk etc.	5%	2%	7%	7%	3%
SUM Bicycle etc.	6%	3%	3%	4%	4%
Moped 45 km/h	0%	0%	-	0%	0%
Motorcycle	-	0%	0%	-	0%
Passenger car	67%	73%	81%	80%	73%
Taxi cab	0%	0%	0%	0%	0%
Van	1%	8%	1%	1%	6%
Lorry	0%	2%	-	0%	1%
Tractor, working vehicle	0%	0%	-	0%	0%
Tourist coach, rented bus	3%	1%	1%	2%	1%
SUM Car etc.	71%	85%	83%	84%	82%
SUM Collective road	8%	1%	2%	1%	2%
S-train (Cph suburban rail)	2%	2%	1%	1%	2%
Metro + Light rail	1%	1%	0%	0%	1%
Other train	7%	6%	4%	2%	5%
SUM Train	10%	8%	5%	3%	7%
SUM Other	0%	1%	1%	1%	1%
Total	100%	100%	100%	100%	100%

Table 35: Occupation groups, journeys by chain type

Journeys per person per day	Students	Earners	Unemployed	Pensioners	Average
Walk (only)	0.36	0.31	0.51	0.46	0.37
Bicycle (only)	0.26	0.17	0.09	0.12	0.17
Car etc. as driver	0.11	0.75	0.42	0.41	0.51
Car etc. as passenger	0.36	0.09	0.12	0.11	0.15
SUM Car etc.	0.47	0.84	0.54	0.52	0.67
Train	0.02	0.02	0.01	0.01	0.02
Collective bus	0.05	0.01	0.02	0.01	0.02
Train + bus in combination	0.02	0.01	0.00	0.00	0.01
Train/bus comb. w/bicycle	0.02	0.02	0.01	0.00	0.01
Train/bus comb. w/car	0.04	0.02	0.01	0.01	0.02
SUM Collective	0.14	0.07	0.06	0.02	0.07
Other	0.00	0.00	-	0.00	0.00
Total	1.22	1.39	1.20	1.13	1.28

Table 35a: Occupation groups, modal split (journeys)

Share of journeys	Students	Earners	Unemployed	Pensioners	Average
Walk (only)	29.2%	22.6%	42.6%	41.1%	28.7%
Bicycle (only)	21.1%	12.1%	7.7%	10.6%	13.4%
Car etc. as driver	8.8%	54.0%	35.1%	36.2%	40.0%
Car etc. as passenger	29.3%	6.2%	9.7%	10.1%	12.0%
SUM Car etc.	38.1%	60.2%	44.8%	46.2%	52.0%
Train	2.0%	1.3%	1.2%	0.6%	1.3%
Collective bus	3.7%	0.6%	1.8%	0.6%	1.3%
Train + bus in combination	1.4%	0.8%	0.3%	0.3%	0.8%
Train/bus comb. w/bicycle	1.3%	1.2%	0.8%	0.1%	1.0%
Train/bus comb. w/car	3.1%	1.1%	0.9%	0.5%	1.4%
SUM Collective	11.5%	5.0%	4.9%	2.0%	5.8%
Other	0.1%	0.1%	-	0.0%	0.1%
Total	100%	100%	100%	100%	100%

Table 36: Occupation groups, journey primary purpose

Share of journeys	Students	Earners	Unemployed	Pensioners	Average
Workplace (commute)	5.2%	31.6%	1.6%	0.5%	18.3%
School/educational	33.0%	0.2%	0.5%	-	7.0%
SUM Commute	38.1%	31.8%	2.1%	0.5%	25.3%
SUM Errands	16.8%	26.6%	48.2%	41.0%	28.5%
Home, perm. residence	0.6%	0.2%	0.3%	0.0%	0.3%
After-school, youth club	0.8%	-	-	-	0.2%
Nursery, crèche, day care	1.7%	-	-	-	0.4%
Visit family/friends	10.6%	7.8%	11.6%	12.5%	9.5%
Do sports	8.7%	4.3%	5.5%	4.0%	5.2%
Entertainment (incl. church)	6.7%	5.2%	7.4%	4.8%	5.5%
Allotment/summer cottage	0.4%	0.6%	0.8%	1.3%	0.7%
Leisure round trip	8.5%	14.5%	17.5%	28.7%	16.2%
Holiday, excursion	5.1%	2.9%	3.1%	3.4%	3.5%
Meetings in private context	0.6%	0.5%	1.4%	1.0%	0.7%
Other leisure activity	1.2%	1.3%	1.6%	2.7%	1.6%
SUM Leisure	44.8%	37.4%	49.0%	58.4%	43.8%
SUM Business trips	0.2%	3.9%	0.7%	0.1%	2.2%
SUM Commercial Tr.	0.0%	0.3%	-	-	0.1%
Total	100%	100%	100%	100%	100%

Table 37: Income groups, mileage by mode

(personal, yearly income (DKK), personal mileage excl. commercial transport)

PKM per person per day	<= 150 000	151-250 000	251-350 000	351-500 000	> 500 000
SUM Walk etc.	1.1	1.1	1.2	1.3	1.2
Bicycle	1.4	1.7	1.4	1.7	2.4
Moped 30 km/h	0.0	0.1	0.1	-	0.0
Disability moped (electric)	0.0	0.0	0.0	0.0	-
Electric scooter etc.	0.0	0.0	-	0.0	0.1
SUM Bicycle etc.	1.4	1.8	1.5	1.7	2.5
Moped 45 km/h	-	0.0	0.1	0.0	-
Motorcycle	0.0	-	0.1	0.1	0.2
Passenger car	17.2	21.6	30.3	35.9	44.0
Taxi cab	0.1	0.0	0.0	0.0	0.2
Van	0.2	1.7	2.2	4.6	6.7
Lorry	-	-	2.3	1.6	0.8
Tractor, working vehicle	-	0.0	0.2	0.0	0.0
Tourist coach, rented bus	0.8	0.2	0.0	0.9	1.3
SUM Car etc.	18.3	23.5	35.3	43.2	53.3
Collective, public bus	1.3	0.4	0.6	0.2	0.5
Dial-a-ride, flex. transport	0.3	-	0.1	0.0	-
SUM Collective road	1.7	0.4	0.7	0.2	0.5
S-train (Cph suburban rail)	0.2	0.2	0.6	0.6	1.1
Copenhagen Metro	0.2	0.1	0.1	0.2	0.1
Light rail / tram	0.1	0.0	0.0	0.0	0.0
Other train	1.3	0.6	1.8	3.4	3.7
SUM Train	1.8	0.9	2.5	4.3	5.0
Horse carriage, horse	-	-	-	0.1	-
Ferry, water bus	0.3	0.2	0.2	0.1	0.1
Leisure boat	0.0	-	0.0	-	0.0
Airplane	-	-	-	-	-
SUM Other	0.3	0.2	0.2	0.1	0.2
Total	24.5	27.9	41.4	50.8	62.5

Table 37a: Income groups, modal split (PKM)

Share of personal mileage	<= 150 000	151-250 000	251-350 000	351-500 000	> 500 000
SUM Walk etc.	4%	4%	3%	3%	2%
SUM Bicycle etc.	6%	6%	4%	3%	4%
Moped 45 km/h	-	0%	0%	0%	-
Motorcycle	0%	-	0%	0%	0%
Passenger car	70%	77%	73%	71%	70%
Taxi cab	1%	0%	0%	0%	0%
Van	1%	6%	5%	9%	11%
Lorry	-	-	6%	3%	1%
Tractor, working vehicle	-	0%	1%	0%	0%
Tourist coach, rented bus	3%	1%	0%	2%	2%
SUM Car etc.	75%	84%	85%	85%	85%
SUM Collective road	7%	2%	2%	0%	1%
S-train (Cph suburban rail)	1%	1%	1%	1%	2%
Metro + Light rail	1%	1%	0%	0%	0%
Other train	5%	2%	4%	7%	6%
SUM Train	7%	3%	6%	8%	8%
SUM Other	1%	1%	0%	0%	0%
Total	100%	100%	100%	100%	100%

Table 38: Income groups, journeys by chain type

(personal, yearly income, DKK)

Journeys per person per day	<= 150 000	151-250 000	251-350 000	351-500 000	> 500 000
Walk (only)	0.31	0.38	0.30	0.34	0.31
Bicycle (only)	0.27	0.18	0.18	0.17	0.21
Car etc. as driver	0.11	0.53	0.68	0.71	0.80
Car etc. as passenger	0.41	0.08	0.09	0.07	0.06
SUM Car etc.	0.52	0.61	0.78	0.79	0.86
Train	0.01	0.01	0.01	0.02	0.02
Collective bus	0.04	0.02	0.02	0.01	0.00
Train + bus in combination	0.01	0.00	0.03	0.01	0.01
Train/bus comb. w/bicycle	0.01	0.01	0.01	0.02	0.03
Train/bus comb. w/car	0.03	0.01	0.01	0.02	0.01
SUM Collective	0.11	0.05	0.07	0.07	0.07
Other	0.00	-	-	0.00	0.00
Total	1.20	1.22	1.33	1.37	1.45

Table 38a: Income groups, modal split (journey chain type)

Share of journeys	<= 150 000	151-250 000	251-350 000	351-500 000	> 500 000
Walk (only)	26%	31%	23%	25%	22%
Bicycle (only)	22%	15%	13%	12%	14%
Car etc. as driver	9%	43%	52%	52%	55%
Car etc. as passenger	34%	7%	7%	5%	4%
SUM Car etc.	43%	50%	59%	58%	59%
Train	1%	1%	0%	2%	1%
Collective bus	3%	1%	2%	1%	0%
Train + bus in combination	1%	0%	2%	1%	0%
Train/bus comb. w/bicycle	1%	1%	1%	1%	2%
Train/bus comb. w/car	2%	1%	0%	1%	1%
SUM Collective	9%	4%	5%	5%	5%
Other	0%	-	-	0%	0%
Total	100%	100%	100%	100%	100%

Table 39: Income groups, journey primary purpose

(personal income, DKK)

Share of journeys	<= 150 000	151-250 000	251-350 000	351-500 000	> 500 000
Workplace (commute)	3%	14%	28%	31%	30%
School/educational	32%	2%	1%	0%	0%
SUM Commute	35%	16%	29%	32%	30%
SUM Errands	19%	35%	31%	27%	27%
Home, perm. residence	1%	0%	0%	0%	0%
After-school, youth club	1%	-	-	-	-
Nursery, crèche, day care	2%	-	-	-	-
Visit family/friends	11%	13%	9%	7%	7%
Do sports	9%	5%	4%	5%	6%
Entertainment (incl. church)	5%	7%	4%	6%	7%
Allotment/summer cottage	0%	1%	1%	1%	1%
Leisure round trip	9%	18%	13%	15%	13%
Holiday, excursion	5%	1%	3%	1%	2%
Meetings in private context	1%	1%	1%	1%	1%
Other leisure activity	2%	3%	2%	1%	2%
SUM Leisure	46%	49%	37%	37%	39%
SUM Business trips	0%	1%	3%	4%	4%
SUM Commercial Tr.	0%	-	0%	0%	0%
Total	100%	100%	100%	100%	100%