



Pore size estimation in axon-mimicking microfibers with diffusion-relaxation MRI

Canales-Rodríguez, Erick J; Pizzolato, Marco; Zhou, Feng-Lei; Barakovic, Muhamed; Thiran, Jean-Philippe; Jones, Derek K; Parker, Geoffrey J M; Dyrby, Tim Bjørn

Published in:
Magnetic Resonance in Medicine

Link to article, DOI:
[10.1002/mrm.29991](https://doi.org/10.1002/mrm.29991)

Publication date:
2024

Document Version
Peer reviewed version

[Link back to DTU Orbit](#)

Citation (APA):
Canales-Rodríguez, E. J., Pizzolato, M., Zhou, F-L., Barakovic, M., Thiran, J-P., Jones, D. K., Parker, G. J. M., & Dyrby, T. B. (in press). Pore size estimation in axon-mimicking microfibers with diffusion-relaxation MRI. *Magnetic Resonance in Medicine*. <https://doi.org/10.1002/mrm.29991>

General rights

Copyright and moral rights for the publications made accessible in the public portal are retained by the authors and/or other copyright owners and it is a condition of accessing publications that users recognise and abide by the legal requirements associated with these rights.

- Users may download and print one copy of any publication from the public portal for the purpose of private study or research.
- You may not further distribute the material or use it for any profit-making activity or commercial gain
- You may freely distribute the URL identifying the publication in the public portal

If you believe that this document breaches copyright please contact us providing details, and we will remove access to the work immediately and investigate your claim.

RESEARCH ARTICLE

Magnetic Resonance in Medicine

Pore size estimation in axon-mimicking microfibers with diffusion-relaxation MRI

Erick J. Canales-Rodríguez^{1,2}  | Marco Pizzolato^{2,3}  | Feng-Lei Zhou^{4,5}  |
 Muhamed Barakovic⁶  | Jean-Philippe Thiran^{1,7,8}  | Derek K. Jones⁹  |
 Geoffrey J. M. Parker^{4,10,11}  | Tim B. Dyrby^{2,3} 

Correspondence

Erick J. Canales-Rodríguez, Signal Processing Laboratory (LTS5), EPFL-STI-IEL-LTS5, Station 11, CH-1015 Lausanne, Switzerland.
 Email: erick.canalesrodriguez@epfl.ch

Funding information

Wellcome Trust, Grant/Award Numbers: 096646/Z/11/Z, 104943/Z/14/Z; EPSRC, Grant/Award Number: EP/M020533/1; European Research Council, Grant/Award Number: 101044180; Schweizerischer Nationalfonds zur Förderung der Wissenschaftlichen Forschung, Grant/Award Number: PZ00P2_185814; Danmarks Frie Forskningsfond, Grant/Award Number: 10.46540/3105-00129B; UCL Department of Medical Physics and Biomedical Engineering; the NIHR UCLH Biomedical Research Centre

Abstract

Purpose: This study aims to evaluate two distinct approaches for fiber radius estimation using diffusion-relaxation MRI data acquired in biomimetic microfiber phantoms that mimic hollow axons. The methods considered are the spherical mean power-law approach and a T_2 -based pore size estimation technique.

Theory and Methods: A general diffusion-relaxation theoretical model for the spherical mean signal from water molecules within a distribution of cylinders with varying radii was introduced, encompassing the evaluated models as particular cases. Additionally, a new numerical approach was presented for estimating effective radii (i.e., MRI-visible mean radii) from the ground truth radii distributions, not reliant on previous theoretical approximations and adaptable to various acquisition sequences. The ground truth radii were obtained from scanning electron microscope images.

Results: Both methods show a linear relationship between effective radii estimated from MRI data and ground-truth radii distributions, although some discrepancies were observed. The spherical mean power-law method overestimated fiber radii. Conversely, the T_2 -based method exhibited higher sensitivity to smaller fiber radii, but faced limitations in accurately estimating the radius in one particular phantom, possibly because of material-specific relaxation changes.

Conclusion: The study demonstrates the feasibility of both techniques to predict pore sizes of hollow microfibers. The T_2 -based technique, unlike the spherical mean power-law method, does not demand ultra-high diffusion gradients, but requires calibration with known radius distributions. This research contributes to the ongoing development and evaluation of neuroimaging techniques for fiber radius estimation, highlights the advantages and limitations of both methods, and provides datasets for reproducible research.

KEYWORDS

biomimetic phantoms, diffusion MRI, fiber radius, microstructure, T_2 relaxometry

For affiliations refer to page 13

This is an open access article under the terms of the [Creative Commons Attribution](https://creativecommons.org/licenses/by/4.0/) License, which permits use, distribution and reproduction in any medium, provided the original work is properly cited.

© 2024 The Authors. *Magnetic Resonance in Medicine* published by Wiley Periodicals LLC on behalf of International Society for Magnetic Resonance in Medicine.

1 | INTRODUCTION

Accurately measuring the diameter of axons *in vivo* has been a crucial goal in diffusion MRI (dMRI),^{1–13} because the axon diameter modulates the speed of action potentials along the axon and may serve as a biomarker of axonal degeneration.^{14–17} However, existing dMRI techniques are affected by a resolution limit, or diameter lower-bound, below which smaller axons cannot be detected. This limit is determined by the experimental setup, particularly the strength of the diffusion encoding gradient and the SNR.^{7,18} Unfortunately, dMRI signals collected in 3T clinical scanners equipped with diffusion gradients below 80 mT/m have a higher resolution limit,¹⁸ allowing only the detection of large axons. For additional discussions, the reader is referred to Edgar et al.,¹⁹ Dyrby et al.,²⁰ Caminiti et al.,²¹ and Innocenti et al.^{22,23} As a result, dMRI-based diameter estimation techniques are primarily implemented in advanced human “Connectom” scanners with stronger diffusion gradients (i.e., 300 mT/m)²⁴ and preclinical scanners.⁷ A recent study has shown that the effective radius—defined as the “apparent” MRI-visible mean axon radius representing the entire axon radius distribution within a voxel—can be estimated by eliminating two crucial confounding factors from the dMRI signal that affected previous studies: extra-axonal water and axonal orientation dispersion.² This method is referred to as the spherical mean power-law approach.

Alternatively, in porous media and tissues, pore and cell sizes can be estimated using a surface-based T_2 relaxation model.^{25–30} This model predicts a linear dependence between the inverse of the intra-pore/cell T_2 and the surface-to-volume ratio of the confining pore/cell geometry,³¹ which is proportional to the inverse of the radius for a cylinder. However, this technique cannot be directly applied in living tissue to estimate axon radius because the T_2 measured by conventional quantitative MRI techniques is affected by both the intra-axonal and extra-axonal water compartments. To overcome this limitation, we recently proposed a new diffusion-relaxation MRI approach for quantifying axon radii^{32,33} based on estimating the intra-axonal T_2 relaxation time.³⁴

In practice, both approaches for estimating axon radii—the spherical mean power-law method² and the T_2 -based pore size estimation technique³³—involve collecting a first dMRI dataset using a fixed echo time ($TE > 50$ ms) long enough to attenuate the myelin water dMRI signal,³⁵ and multiple diffusion gradients orientations with a high b -value (e.g., $b \geq 4000$ – 6000 s/mm² for *in vivo* data) to attenuate the extra-axonal dMRI signal.³⁶ This way, the acquisition parameters act as a filter, significantly reducing the contribution of water molecules from

all white matter compartments to the measured dMRI signal, but not the intra-axonal space. The difference between the two acquisition approaches lies in how the second data block is acquired. The spherical mean power-law method requires measuring another dMRI dataset using the same TE and much higher b -values (e.g., $b \geq 10\,000$ s/mm² for *in vivo* data) with ultra-strong diffusion gradients only available on specific scanners. This is needed to reduce the resolution limit.¹⁸ On the other hand, the T_2 -based pore size estimation method requires collecting another dMRI dataset using the same b -value used in the first acquisition block, but using different TE s. In both techniques, the dimensionality of the data is reduced before fitting the models by computing the orientation-averaged spherical mean signal, which is a rotationally invariant metric that does not depend on the underlying fiber orientation distribution.³⁷ This strategy effectively reduces the number of parameters estimated in the diffusion and relaxation models.

In the spherical mean power-law approach,² the intra-axonal radial diffusivity D_{\perp} is calculated from the dMRI data acquired with high and ultra-high b -values, which is then converted into a radius by using the van Gelderen model based on the Gaussian phase distribution approximation.³⁸ Conversely, for the T_2 -based pore size estimation method,³³ the intra-axonal T_2 time is determined from the dMRI data acquired using multiple TE s, following the approach suggested by McKinnon and Jensen.³⁴ The intra-axonal T_2 is subsequently converted into a radius using a surface-based relaxation model^{30,39} that requires a calibration process to determine the T_2 surface relaxivity, an unknown parameter that depends on the relaxation properties of the inner axon surface.³³ The main practical disadvantage of the calibration step is that it requires knowing the ground-truth radius in some brain regions, which is information that is not always available.

Although both methods hold great promise for accurate pore/cell size estimation, a systematic evaluation of these techniques in a controlled setting with a known ground truth has yet to be conducted. Additionally, the absence of a comprehensive multi-contrast diffusion-relaxation model for the spherical mean signal generated by water molecules within a distribution of pore sizes (or axon radii) represents a notable limitation that hinders our ability to elucidate the theoretical relationship between these techniques.

To overcome these limitations, this study outlines the following objectives: (1) formulate a theoretical diffusion-relaxation model capable of encompassing both the spherical mean power-law and T_2 -based methods. This formulation shall be helpful to clarify the main assumptions underpinning each approach. (2) Evaluate

both techniques using diffusion-relaxation MRI data acquired in biomimetic phantoms where the ground truth is known. These phantoms consist of co-electrospun hollow axon-mimicking microfibers with non-circular cross-sections and different radii distributions. (3) Introduce a novel numerical approach for calculating effective radius from radius distributions measured via scanning electron microscopy (SEM). This numerical approach is necessary to circumvent the limitations associated with previous approximated analytical expressions, which are not accurate for the range of pore sizes in the used phantoms.

2 | THEORY

2.1 | Intra-pore diffusion-relaxation MRI model

This section introduces a diffusion-relaxation model for the spherical mean MRI signal generated by water molecules filling the intra-pore space of a distribution of cylinders with different radii. This formulation unifies into a single model the two techniques evaluated in this study:

$$\bar{S}(b, TE) = k \frac{\int P(r) r^2 \bar{S}_{\text{Rel}}(TE, r) \bar{S}_{\text{Diff}}(b, r) dr}{\int P(r) r^2 dr}, \quad (1)$$

where the spherical mean diffusion-relaxation signal $\bar{S}(b, TE)$ depends on the b -value and TE, k is a constant proportional to the total intra-pore volume, r denotes the radius, $P(r)$ is the radius distribution, and the volumetric correction factor r^2 accounts for the volume-weighted nature of the measured MRI signal (i.e., the signal intensity from each cylinder is proportional to the number of water molecules inside the cylinder, and therefore, to its volume).

The T_2 relaxation-weighted MRI signal $\bar{S}_{\text{Rel}}(TE, r)$ for a cylinder with radius r is

$$\bar{S}_{\text{Rel}}(TE, r) = \exp\left(-\frac{TE}{T_2^i(r)}\right), \quad (2)$$

where the intra-pore transversal relaxation time T_2^i depends on r , according to Brownstein and Tarr,³¹ Barakovic et al.,³³ and Zimmerman and Brittin.³⁹

$$\frac{1}{T_2^i} = \frac{1}{T_2^b} + \frac{2\rho_2}{r}, \quad (3)$$

where T_2^b denotes the T_2 relaxation time of the bulk (free) water filling the cylinders and ρ_2 is the T_2 surface relaxivity depending on the phantom material.

The spherical mean diffusion-weighted signal $\bar{S}_{\text{Diff}}(b, r)$ from a cylinder with radius r , in Eq. (1), is modeled as

$$\bar{S}_{\text{Diff}}(b, r) = \sqrt{\frac{\pi}{4}} \exp(-D_{\perp}(r)b) \frac{\text{erf}\left(\sqrt{b(D_{\parallel} - D_{\perp}(r))}\right)}{\sqrt{b(D_{\parallel} - D_{\perp}(r))}}, \quad (4)$$

which is the spherical mean signal equation for an axis-symmetric diffusion tensor,^{2,13,36,37,40,41} where erf denotes the error function, and the radial diffusivity D_{\perp} depends on r according to the van Gelderen model,³⁸ defined in Eq. (A1) in Appendix A.

In the following two subsections, we will examine the necessary approximations required to derive the T_2 -based pore size estimation technique³³ and the spherical mean power-law method² from the more general model presented in Eqs. (1–4).

2.2 | Intra-pore pure relaxation MRI model: T_2 -based estimation technique

When the data is measured using a diffusion gradient that is not sufficiently strong, the sensitivity of the diffusion-weighted signal to the cylinder radius is significantly reduced,¹⁸ that is, the diffusion signal becomes proportional to the signal from a cylinder with infinitesimal radius, $\bar{S}_{\text{Diff}}(b, r) \propto \bar{S}_{\text{Diff}}(b, r \rightarrow 0)$. In such cases, $\bar{S}_{\text{Diff}}(b, r)$ can be treated as a constant and moved outside the integral in Eq. (1). As a result, the general diffusion-relaxation model becomes a pure relaxation model:

$$\bar{S}(TE) = K \frac{\int P(r) r^2 \bar{S}_{\text{Rel}}(TE, r) dr}{\int P(r) r^2 dr}, \quad (5)$$

where K is a constant to be estimated that absorbed the diffusion signal. Similar to the spherical mean power-law method described in the next subsection, the integral in Eq. (5) is approximated by the relaxation signal from a single cylinder with an effective radius characterizing the whole distribution

$$\bar{S}(TE) \approx K \bar{S}_{\text{Rel}}(TE, r_{\text{eff-MRI-R}}). \quad (6)$$

Notably, the T_2 -based pore size estimation technique, as proposed in Barakovic et al.,³³ relies on the pure relaxation model defined in Eq. (6). Note that $r_{\text{eff-MRI-R}}$ denotes the effective MRI-visible radius resulting from the relaxation process.

2.3 | Intra-pore pure diffusion MRI model: Spherical mean power-law

If the relaxation signal $\bar{S}_{\text{Rel}}(\text{TE}, r)$ can be neglected in Eq. (1), (e.g., by assuming that T_2^i is a constant independent of r) when $\rho_2 \rightarrow 0$, then it can be treated as a constant term and moved outside the integral. Accordingly, the diffusion-relaxation model is simplified, resulting in a pure diffusion model

$$\bar{S}(b) \approx \beta \frac{\int P(r) r^2 \bar{S}_{\text{Diff}}(b, r) dr}{\int P(r) r^2 dr}, \quad (7)$$

where β is a constant to be estimated that absorbed the relaxation signal. The integral in Eq. (7) is approximated by the spherical mean diffusion signal from a cylinder with an effective radius:

$$\bar{S}(b) \approx \beta \bar{S}_{\text{Diff}}(b, r_{\text{eff-MRI-D}}), \quad (8)$$

where $r_{\text{eff-MRI-D}}$ denotes the effective MRI-visible radius resulting from the diffusion process. Notice that $r_{\text{eff-MRI-D}}$ and the effective radius calculated from the relaxation process described in the previous subsection $r_{\text{eff-MRI-R}}$ are not necessarily equal, as the MRI signals from both modalities may have different sensitivities to pore size.

It is important to note that the spherical mean power-law technique for estimating axon radius presented in Veraart et al.² is based on Eq. (8). In that study, however, the authors simplified the model by using two additional approximations (1): the term involving the error function in Eq. (4) was omitted because it tends to one for the axon radii found in the brain; and (2) the van Gelderen model defined by Eq. (A1) relating D_{\perp} and r was replaced by the wide pulse approximation derived by Neuman,⁴² which is valid for small radii and long pulses ($\Delta \gg \delta \gg r^2/D_{\parallel}$); for more details see Eq. (A2) in Appendix A. However, because these approximations are not valid for large radii, such as those measured in our phantoms, in this study we estimated the axon radii using the more general expressions given by Eqs. (8), (4), and (A1) using the van Gelderen model, as suggested by Andersson et al.⁴³

For theoretical purposes only, in Appendix A Eq. (A3) (see also Figure C1 of Appendix C), we introduce a new approximation for a broader application in the regime of medium-pulse times, $\Delta \gg \delta \gg r^2/D_{\parallel}$, which is more accurate than Neuman's approximation for both small and large radii.

2.4 | Numerical effective radius

We evaluate the relaxation and diffusion models in Eqs. (6) and (8) by comparing the effective radii $r_{\text{eff-MRI-R}}$ and

$r_{\text{eff-MRI-D}}$ estimated from the MRI data with the actual effective radius of the biomimetic phantoms determined from the underlying radius distribution $P(r)$, which was measured in our study using SEM. However, the method for estimating the actual effective radius from $P(r)$ has a significant limitation. The standard formula for calculating the effective radius $r_{\text{eff}} \approx (\langle r^6 \rangle / \langle r^2 \rangle)^{1/4}$ from the 6th and 4th moments of $P(r)$ ^{2,44} was derived under the wide pulse approximation by Neuman. Therefore, it is only valid for small radii,⁴³ much smaller than the ones measured in the phantoms. Hence, this formula cannot be used in the evaluation. For further information, refer to Figure C1 in Appendix C.

To address this issue, we propose a new numerical approach to estimate effective radius from $P(r)$, which is valid for radius distributions with both small and large radii. This approach generates the synthetic relaxation $\bar{S}_{\text{Rel-SEM}}$ and diffusion $\bar{S}_{\text{Diff-SEM}}$ signals produced by the actual radius distribution $P(r)$. The synthetic signals are generated by discretizing the integrals in Eqs. (5) and (7) using the measured radii, respectively:

$$\begin{aligned} \bar{S}_{\text{Rel-SEM}}(\text{TE}, \rho_2) &\approx K \sum_{i=1}^N \left(\frac{r_i^2}{\sum_{j=1}^N r_j^2} \right) \bar{S}_{\text{Rel}}(\text{TE}, r_i, \rho_2), \\ \bar{S}_{\text{Diff-SEM}}(b) &\approx \beta \sum_{i=1}^N \left(\frac{r_i^2}{\sum_{j=1}^N r_j^2} \right) \bar{S}_{\text{Diff}}(b, r_i), \end{aligned} \quad (9)$$

where $\{r_i, i = 1, \dots, N\}$ denotes the set of N radii measured per phantom.

By using the same equations used to predict the effective radius from the MRI data, (i.e., Eqs. [6] and [8]), it is then possible to estimate the SEM-based effective radii $r_{\text{eff-SEM-R}}$ and $r_{\text{eff-SEM-D}}$ from these synthetic signals for the assumed relaxation and diffusion models.

Additionally, for the pure relaxation model, we consider a further approximation to estimate the effective radius by calculating the ratio of the second and first moments of $P(r)$, $r_{\text{eff-SEM}} = \langle r^2 \rangle / \langle r \rangle$. This approximation is based on a Taylor expansion of the relaxation model, presented in Appendix B. Notice that $r_{\text{eff-SEM}}$ provides an approximation to the value of $r_{\text{eff-SEM-R}}$. It is estimated directly from the radius distribution and does not involve generating a synthetic relaxation signal.

3 | METHODS

3.1 | Phantom construction and characterization

Five phantom samples consisting of micron-scale hollow fibers mimicking axons in white matter were built using the co-electrospinning technique⁴⁵ to produce microfibers with a different distribution of inner fiber radius per

phantom. Each phantom was constructed by concatenating various phantom samples (layer substrates) created to have similar distributions of fiber radii.

The inner fiber radii of each phantom were measured using five SEM images taken from different phantom samples. The SEM images were captured using a Phenom ProX desktop SEM (Thermo Fisher Scientific) with an accelerating voltage of 5 kV. The ImageJ software (imagej.nih.gov/ij) was used to analyze the SEM images, following the methods described in Zhou et al.⁴⁶ and Huang et al.⁴⁷ Specifically, for each sample, the SEM images underwent a process of binarization and thresholding. Subsequently, the intra-fiber area of each pore was determined using the “Analyze Particles” feature in ImageJ. The automated measurements of each intra-fiber area (A_i) were then transformed into the corresponding inner fiber radius under the assumption that the cross-section of the pore is circular. This transformation was achieved through the formula $r_i = \sqrt{A_i/\pi}$, where r_i represents the inner fiber radius of each i th measured pore. Therefore, the inner fiber radius is defined as the radius of a cylinder with the same cross-sectional area (or volume) as the pore, ensuring that the computed radius reflects the pore’s volumetric properties.

Phantom 1, 3, 4, and 5 were composed of parallel fibers with different radii, whereas Phantom 2 comprised two groups of parallel fibers with an inter-fiber angle of 90°. Phantom 1 and Phantom 2 were designed to have similar distributions of fiber radius.

All phantoms were placed inside 15 mL centrifuge tubes filled with de-ionized water. An additional control tube only containing de-ionized free water was also studied. The control tube was used to estimate the diffusion coefficient and T_2 relaxation time of the de-ionized water.

3.2 | Data acquisition

Diffusion-relaxation and multi-shell dMRI data were collected using a 7T Bruker preclinical scanner at the Danish Research Center for Magnetic Resonance (DRCMR). Airflow at a controlled room temperature was applied around the sample to ensure a steady sample temperature during the acquisition. The diffusion-relaxation protocol used to fit the pure relaxation model (i.e., T_2 -based technique) had the following acquisition parameters: a b -value of 5000 s/mm² (diffusion gradient, $G = 166.8$ mT/m; diffusion times, $\Delta/\delta = 35/9$ ms) acquired in 48 equidistant diffusion directions distributed over the unit sphere; a repetition time TR of 6100 ms; a voxel-size of $2 \times 2 \times 2$ mm³; and one $b = 0$ s/mm² image per TE. The acquisition was repeated for six TEs: [51, 75, 100, 150, 200, 250] ms.

The multi-shell dMRI acquisition protocol used to fit the pure diffusion model (i.e., spherical mean power-law) consisted of using five high b -values: $b = [5000, 6000, 7000, 8000, 10\,000]$ s/mm² with respective diffusion gradients $G = [166.8, 182.7, 197.3, 210.95, 235.85]$ mT/m. The TE was set to 51 ms, and one $b = 0$ s/mm² (b_0) image was acquired per b -value. The other experimental parameters, such as TR, Δ , δ , voxel size, and the number of diffusion directions, were kept the same as in the diffusion-relaxation acquisition sequence. To evaluate the SNR in our experiments, we used the following approach. For each voxel, we calculated the SNR as the ratio of the mean value to the SD across the set of five b_0 images. Subsequently, the mean SNR was determined from the individual voxelwise SNR values within a mask comprising the five phantoms, yielding a mean SNR value of 34. In our experiments, we opted to use the raw data without preprocessing because the phantom data remained unaffected by motion. Introducing any denoising step was avoided to prevent unwanted smoothing effects and partial volume contamination, especially given the small size of the phantoms.

3.3 | Estimation

Like in previous studies,^{34,48-50} we assumed that for $b \geq 5000$ s/mm² the signals originating from water molecules outside the intra-fiber compartment, which likely experience larger diffusion displacements, are highly attenuated. This assumption allows us to focus on the signals originating within the intra-fiber compartment. We computed the spherical mean signal $\bar{S}(TE, b)$ by averaging the signal measurements over all the diffusion gradient directions^{37,51-53} for each b -value and TE.

From the diffusion-relaxation data acquired at different TEs, we estimated the relaxation time within the intra-fiber compartment T_2^i by fitting the mono-exponential relaxation model^{34,49,50} defined by Eqs. (6) and (2). To perform the fitting, we used the non-linear “L-BFGS-B” optimization method available in Scipy.⁵⁴ Subsequently, we implemented a calibration approach to estimate ρ_2 , which enables us to calculate $r_{\text{eff-MRI-R}}$ from the intra-fiber T_2^i times using Eq. (3). The following subsection provides additional information on the calibration procedure.

To obtain the effective radius from the pure diffusion model $r_{\text{eff-MRI-D}}$ (i.e., spherical mean power-law method) we fitted Eqs. (8), (4) and (A1) to the multi-shell dMRI data. In Eq. (10), we included the first $m = 18$ terms in the series to capture the diffusion behavior within the fibers accurately.²

The estimated radii $r_{\text{eff-MRI-R}}$ and $r_{\text{eff-MRI-D}}$ were compared with the SEM-based effective radii $r_{\text{eff-SEM-R}}$ and $r_{\text{eff-SEM-D}}$ derived from the underlying radius distributions

$P(r)$, respectively. The effective radii $r_{\text{eff-SEM-R}}$ and $r_{\text{eff-SEM-D}}$ were calculated as described in the numerical effective radius subsection using custom in-house software.

3.4 | T_2 -based calibration to estimate the surface relaxivity

To predict the fiber radius $r_{\text{eff-MRI-R}}$ from the intra-fiber relaxation time T_2^i , it is necessary to determine the values of T_2^b and ρ_2 in Eq. (3). In porous media, the parameter T_2^b is typically neglected as its value is significantly larger than T_2^i . In our study, we used the control tube to estimate it and found $T_2^b \approx 3s$. The surface relaxivity ρ_2 was calculated for each phantom by minimizing the mean squared difference between the measured diffusion-relaxation data $\bar{S}(\text{TE})$ and the synthetic relaxation signal $\bar{S}_{\text{Rel-SEM}}(\text{TE}, \rho_2)$ generated by Eq. (9) using the actual radius distribution measured by SEM.

Once these parameters (T_2^b and ρ_2) are computed, the fiber radius can be estimated. Two approaches were considered in this study to evaluate the accuracy of the radius estimation, (1) assuming a constant surface relaxivity for all phantoms by calculating the mean ($\bar{\rho}_2$); and (2) using the individual optimal surface relaxivity value estimated for each phantom.

4 | RESULTS

4.1 | Electron microscopy analysis

The SEM analysis was conducted to examine the morphology of the phantom fibers. Figure 1 shows an example of SEM micrographs, visually representing the fiber structure. The inner fiber radius distribution for each phantom is depicted in Figure 2, allowing for a comprehensive understanding of the variations in fiber radii. Although all phantoms exhibit a significant proportion of fiber radii that resemble those observed in human brains, it is important to note the presence of a notable population of larger radii ranging from 4 to 10 μm .

Table 1 provides quantitative data on the average fiber radius for each phantom and the sample size, that is, the number of radii that were measured for the analysis.

4.2 | T_2 -based pore size estimation

The T_2 -based calibration analysis performed to estimate the surface relaxivity revealed that most phantoms exhibited a similar surface relaxivity value, with a mean of $\bar{\rho}_2 = 3.7 \pm 0.6 \text{ nm/ms}$. However, Phantom 3 showed a reduced surface relaxivity, $\rho_2 = 2.0 \text{ nm/ms}$, deviating from the average value observed in the other phantoms.

The comparison between the effective radii $r_{\text{eff-MRI-R}}$ calculated from the measured diffusion-relaxation data, assuming that all the phantoms have the same surface relaxivity $\bar{\rho}_2$, and the SEM-based effective radii $r_{\text{eff-SEM-R}}$ is presented in Figure 3A. The estimates align closely with the “ $y=x$ line of identity”, indicating a nearly perfect linear relationship, except for Phantom 3, which substantially differs from this linear trend. The regression line fitted to the data has an intercept of 0.66 μm and a slope of 0.88.

The correlation coefficient (R) measuring the strength of the linear relationship between the two radii sets was not statistically significant, $R = 0.66$, $p = 0.228$. However, excluding Phantom 3 from the analysis made it statistically significant ($R = 0.95$, $p = 0.046$), indicating a strong linear relationship between the estimated radii for the remaining phantoms.

Figure 3B shows the measured MRI data and the generated synthetic signals from the ground truth radii distributions as a function of TE. Overall, there is a close agreement between the two data sets for all phantoms, except for Phantom 3, which exhibits notable discrepancies.

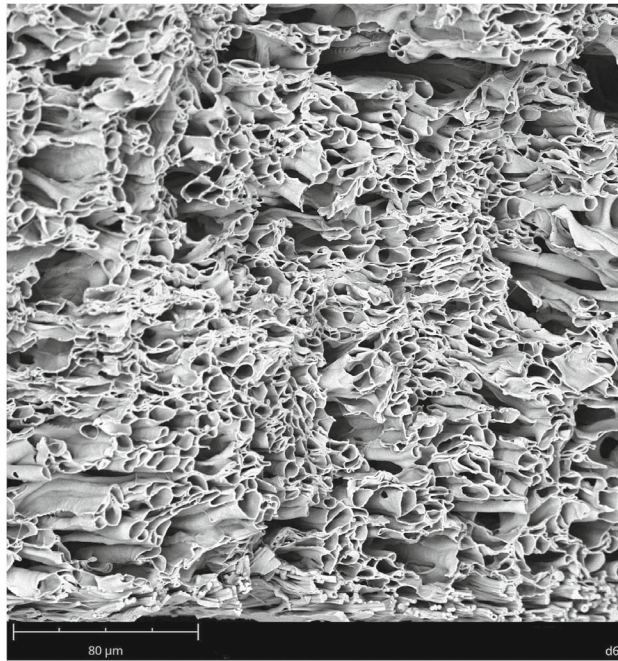
The analysis considering a different surface relaxivity for each phantom is presented in Figure 4. Figure 4A displays the regression line comparing the effective radii, demonstrating a perfect agreement between the estimated radii and the radii derived from the SEM-measured distributions. The regression line has an intercept of $-0.0046 \mu\text{m}$ and a slope of 1.001, indicating a nearly one-to-one correspondence between the two sets of radii. The correlation coefficient is 1.0, with a significant p -value of $7e-9$, confirming the strong linear relationship. Figure 4B compares the measured diffusion-relaxation data and the synthetic signals generated from the respective SEM-based radii distributions. The two data sets show excellent agreement, with close correspondence across the entire range of TE values.

In Figure 5, the linear relationship between the estimated effective radius $r_{\text{eff-MRI-R}}$ and the approximated effective radius derived from the second and first moments of the radius distribution, $r_{\text{eff-SEM}} = \langle r^2 \rangle / \langle r \rangle$, is depicted. The regression analysis demonstrates a strong linear relationship between the radii, as indicated by the intercept of 0.15 μm and the slope of 0.93. The correlation coefficient ($R = 0.93$) indicates a high degree of linear association between $r_{\text{eff-MRI-R}}$ and $r_{\text{eff-SEM}}$, which is statistically significant, $p = 0.0046$.

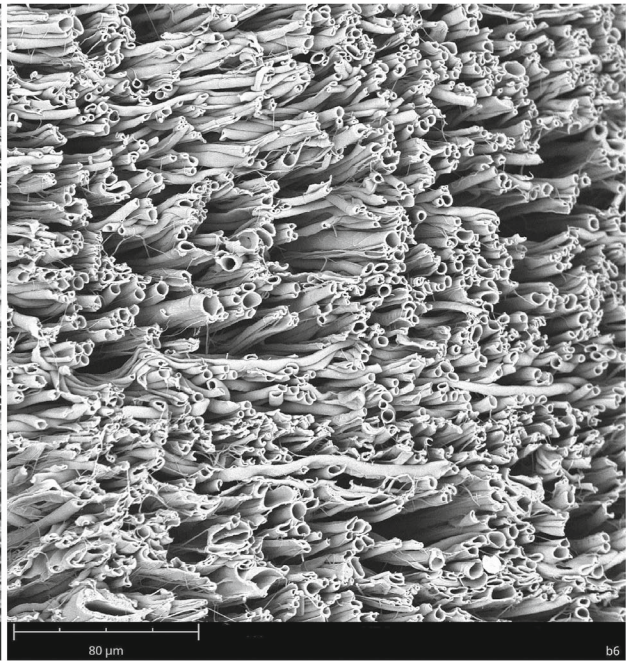
4.3 | Diffusion-based pore size estimation

The diffusion-based pore size estimation analysis is presented in Figure 6. Figure 6A demonstrates the linear

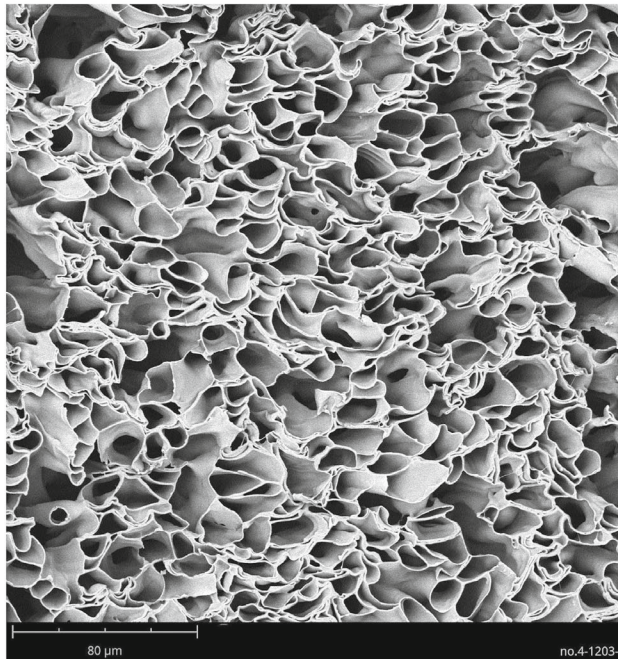
Phantoms 1 and 2



Phantom 3



Phantom 4



Phantom 5

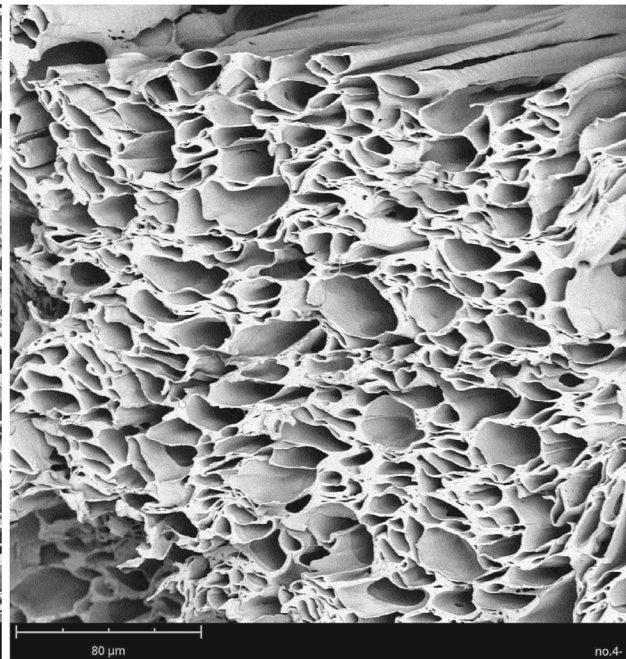


FIGURE 1 Scanning electron micrographs depicting the microscopic morphology of the biomimetic phantom samples. All phantom samples are presented on the same length scale (80 μm). Phantom 1 and Phantom 2 are shown together as they were constructed using similar distributions of fiber radii.

relationship between the fiber radii estimated from the multi-shell dMRI data using the spherical mean power-law approach and the radii derived from the SEM images. The statistically significant correlation coefficient ($R=0.91$, $p=0.031$) confirms the strength of this relationship. The intercept and slope of the regression line are 2.32 μm and 0.57, respectively. Figure 6B compares

the measured multi-shell dMRI data and the synthetic diffusion signals generated from the SEM-based radius distribution. The plot shows the decay rates of the diffusion signals as a function of the b -value. It is observed that the synthetic diffusion signals exhibit lower decay rates compared to the measured data for all phantoms.

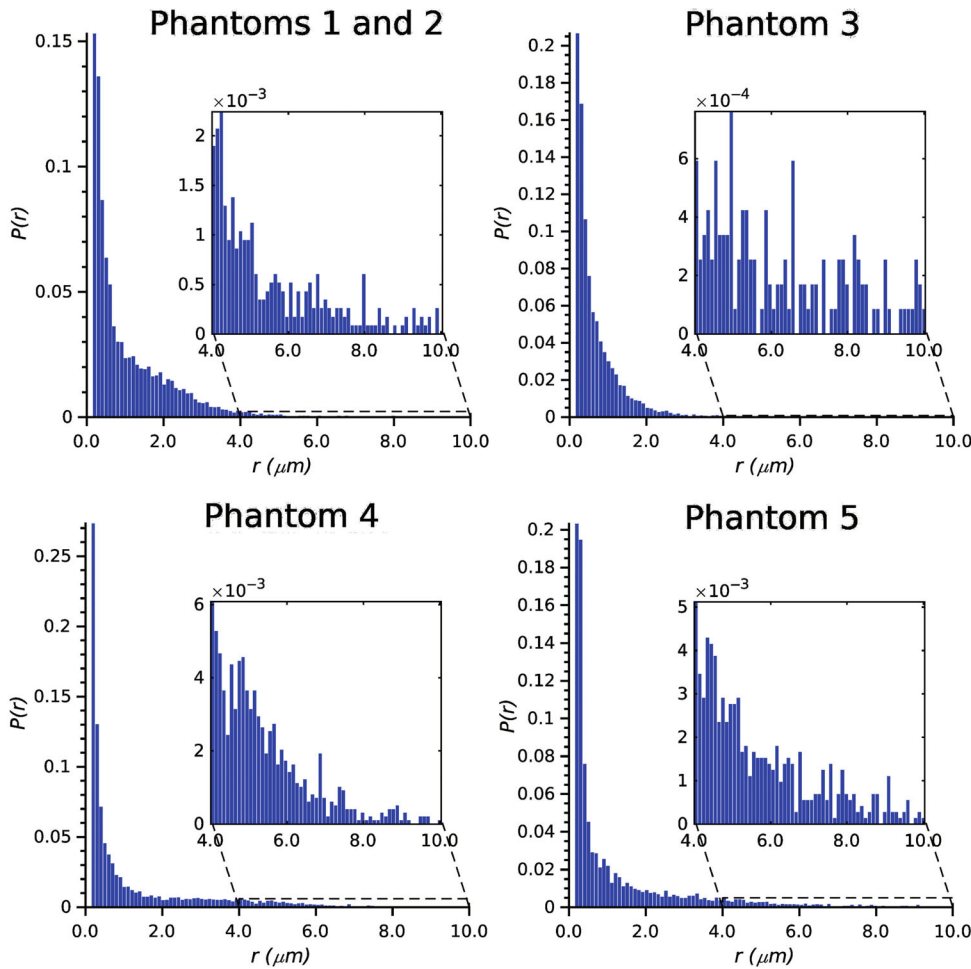


FIGURE 2 Radius distribution per phantom estimated using scanning electron microscopy. Phantom 1 and Phantom 2 are displayed together as both were built using similar distributions. The right tail of each distribution is zoomed in to visualize the distribution of the largest fibers. The mean radius and number of radii measured for each phantom are reported in Table 1.

TABLE 1 Mean radius $\langle r \rangle$ per phantom, calculated from the radius distributions depicted in Figure 2.

Phantom	$\langle r \rangle \mu\text{m}$	N
Phantoms 1 and 2	1.07	11 618
Phantom 3	0.70	11 827
Phantom 4	1.18	9880
Phantom 5	1.21	7246

Note: The number of measured radii N using scanning electron microscopy is reported.

5 | DISCUSSION

We evaluated the spherical mean power-law method² and the T_2 -based pore size estimation technique³³ using diffusion-relaxation MRI data acquired in biomimetic phantoms consisting of hollow axon-mimicking microfibers with non-circular cross-sections and different radii distributions. While the T_2 -based pore size estimation technique requires a single high b -value and multiple (at least two) TEs, the spherical mean power-law method relies on a single TE and multiple

(at least two) high b -values with very strong diffusion gradients. Notably, the T_2 -based approach has more modest demands on the b -value than the diffusion-based spherical mean power-law technique. However, the T_2 -based estimation approach relies on a calibration step that requires knowledge of the ground-truth radius distribution in specific regions to determine its surface relaxivity.

The linear relationship between the T_2 -based effective radii estimated from the diffusion-relaxation MRI data and the ground truth radius distributions, as depicted in Figures 3–5, highlights the overall agreement between the estimates. However, it is worth noting that the estimation approach assuming a constant surface relaxivity for all phantoms was not accurate for Phantom 3, as evident from Figure 3A. This deviation is attributed to the smaller surface relaxivity estimated for Phantom 3. Consequently, the predicted radius for Phantom 3 was considerably higher, leading to a mismatch between the generated synthetic signal and the measured data, as shown in Figure 3B. The linear correlation coefficient for the estimated effective radii was not statistically significant. However, on removing Phantom 3 from the analysis, the

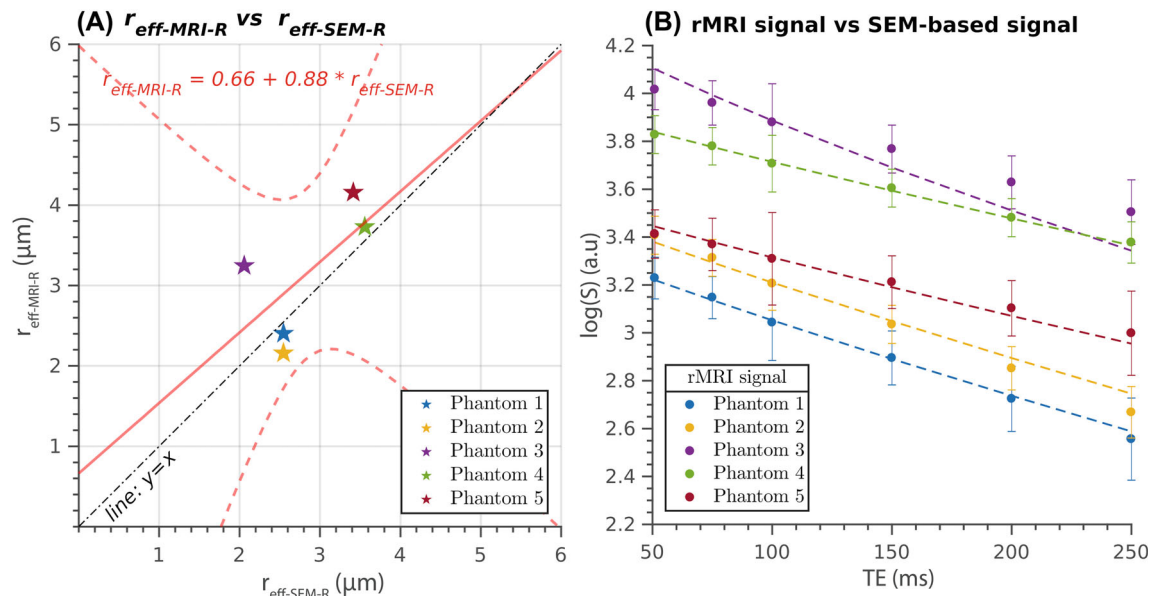


FIGURE 3 (A) Presents the relationship between the T₂-based inner fiber radius (y-axis, $r_{\text{eff-MRI-R}}$) predicted using the measured diffusion-relaxation data with a fixed surface relaxivity of $\bar{\rho}_2 = 3.7$ nm/ms and the effective radius estimated from the synthetic relaxation signal generated using the radius distribution obtained from scanning electron microscopy (SEM) images (x-axis, $r_{\text{eff-SEM-R}}$). The scatter plot represents the radius estimated from the mean signal for all voxels within each phantom. The regression line compares the estimates, whereas the reference line ($y = x$) indicates perfect linear agreement. (B) Displays the logarithm of the measured relaxation MRI (rMRI) data represented by the mean value and standard deviation across all voxels per phantom, along with the SEM-based generated synthetic signal as a function of the TE in the whole interval.

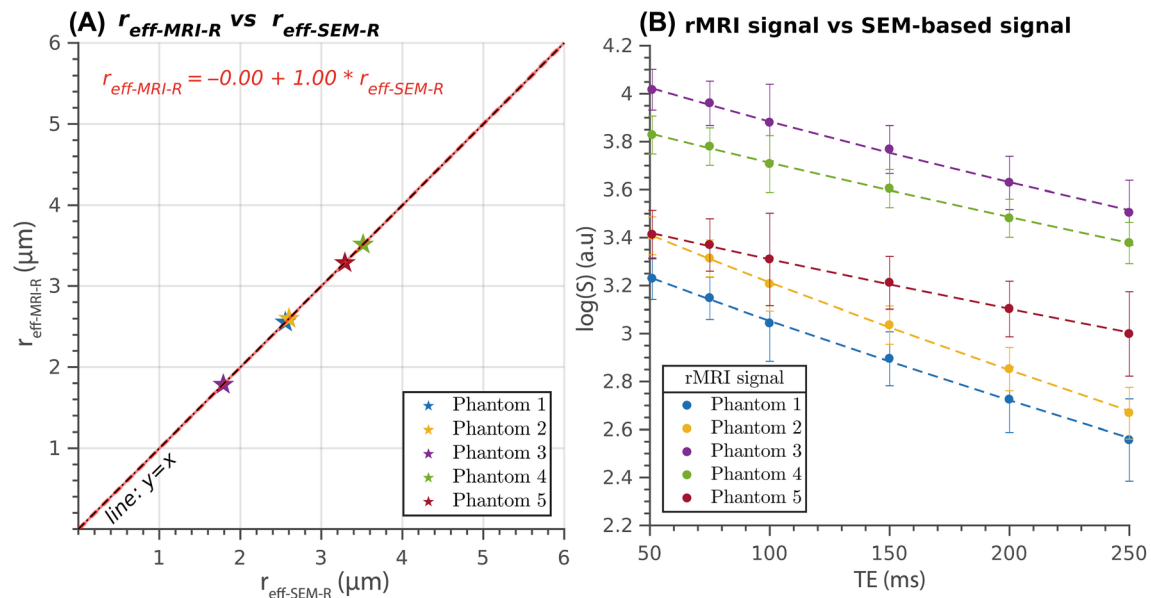


FIGURE 4 (A) Presents the relationship between the T₂-based inner fiber radius (y-axis, $r_{\text{eff-MRI-R}}$) predicted using the measured diffusion-relaxation data with the surface relaxivity estimated individually for each phantom, and the effective radius calculated from the synthetic relaxation signal generated using the radius distribution obtained from scanning electron microscopy (SEM) images (x-axis, $r_{\text{eff-SEM-R}}$). The scatter plot represents the radius estimated from the mean signal for all voxels within each phantom. The regression line compares the estimates, whereas the reference line ($y = x$) indicates perfect linear agreement. (B) Displays the logarithm of the measured relaxation MRI (rMRI) data represented by the mean value and SD across all voxels per phantom, along with the SEM-based generated synthetic signal as a function of the TE in the whole interval.

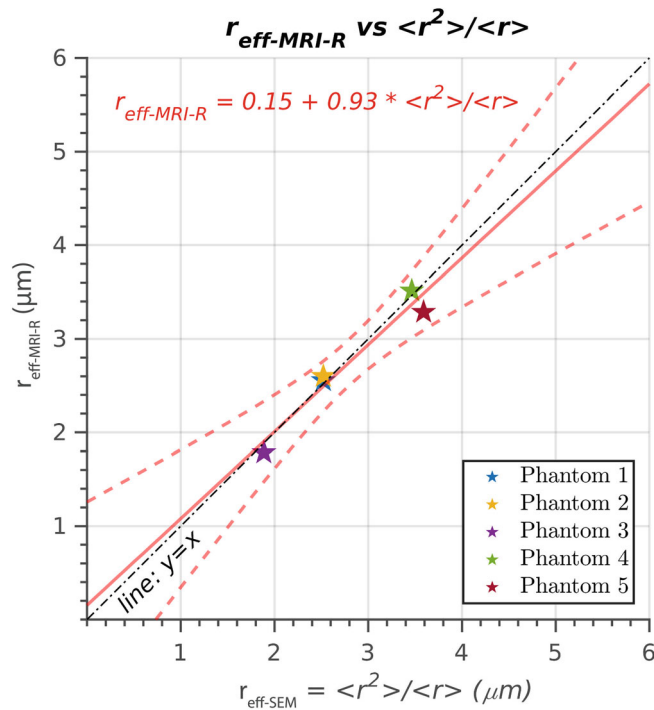


FIGURE 5 The linear relationship between the T_2 -based inner fiber radius (y-axis, $r_{\text{eff-MRI-R}}$) predicted using the measured diffusion-relaxation data with the surface relaxivity estimated individually for each phantom (as in Figure 4) and the effective radius calculated from the moments of the radii distributions (x-axis, $r_{\text{eff-SEM}} = \langle r^2 \rangle / \langle r \rangle$). The scatter plot represents the radius estimated from the mean signal across all voxels within each phantom. In addition to the regression line comparing both estimates, the reference line ($y = x$) is provided for visualizing perfect linear agreement between the two measures.

linear correlation coefficient became statistically significant, indicating a strong relationship between the estimated effective radii for the remaining phantoms. The reason behind the discrepancy in surface relaxivity for Phantom 3 remains uncertain. One plausible hypothesis is that, at the time of scanning, Phantom 3 underwent a natural degradation process typical of this type of material,⁵⁵ resulting in altered interactions between water molecules and the pore surface. This hypothesis is further supported by the observation that, a few weeks after the MRI acquisitions, the white color of Phantom 3—unlike the other phantoms—turned to a light white-pink color, indicating a change in its properties. Despite this issue, we decided to include the results of Phantom 3 in our study to provide a comprehensive analysis and present the complete findings.

The analysis using the individual surface relaxivity estimated for each phantom revealed a remarkable agreement between the effective radii, as demonstrated in Figure 4A. Although this type of analysis is not practically feasible because of the requirement of knowing the

radius distribution for each phantom, it serves as a valuable tool for model validation. Validating a model involves verifying whether the synthetic signal predicted by the model closely matches the measured data. Although this criterion alone is insufficient to validate a model, as an incorrect over-parameterized model can still fit the data, it provides a necessary condition. In this study, the predicted synthetic signal for the relaxation model strongly agreed (Figure 4B) with the measured data. To further explore the relationship between the T_2 -based effective radius and the radius distribution, we conducted an additional analysis by replacing the effective radius used in Figure 4, estimated from the synthetic signals, with the effective radius calculated from the ratio of the second and first moments of the radius distribution. The results in Figure 5 demonstrate that this relationship provides a good approximation.

Moreover, the spherical mean power-law method exhibited a statistically significant linear relationship between the effective radii estimated from the multi-shell dMRI data and the ground truth radius distributions, as demonstrated in Figure 6A, corroborating the sensitivity of this technique. However, the intercept of the linear regression line deviated considerably from zero, indicating an overestimation of the effective radius, particularly for phantoms with smaller radii. A closer examination of the synthetic signals generated by this model using the ground truth radius distributions (Figure 6B) revealed notable discrepancies with the measured dMRI data. Specifically, the measured signals displayed a faster attenuation (i.e., a steeper slope of the logarithm of the signal as a function of the b -value), suggesting the presence of additional processes not accounted for in the model, which contributed to signal attenuation. One possible explanation for this discrepancy is the presence of numerical errors in accurately measuring the radius distribution used to generate the synthetic signals. However, although numerical errors cannot be entirely ruled out, they are unlikely to be the main contributor to the observed discrepancies because the SEM analysis measured several 1000s of fiber radii per phantom (Table 1).

On comparing the effective radii obtained from the T_2 -based and diffusion-based techniques, Figures 3–5 and 6, it is evident that these methods exhibit different sensitivities to spatial scales. Notably, the T_2 -based approach demonstrates a higher sensitivity to smaller radii, resulting in smaller effective radii than the diffusion-based method. To further support this observation, we refer to Figure C2 in Appendix C, where we present plots of the diffusion and relaxation signals as a function of the radius for the specific acquisition protocols used in this study. Consistently with our findings, these plots highlight that the T_2 -based method has a lower resolution limit for detecting small cylindrical fibers than the diffusion-based method.

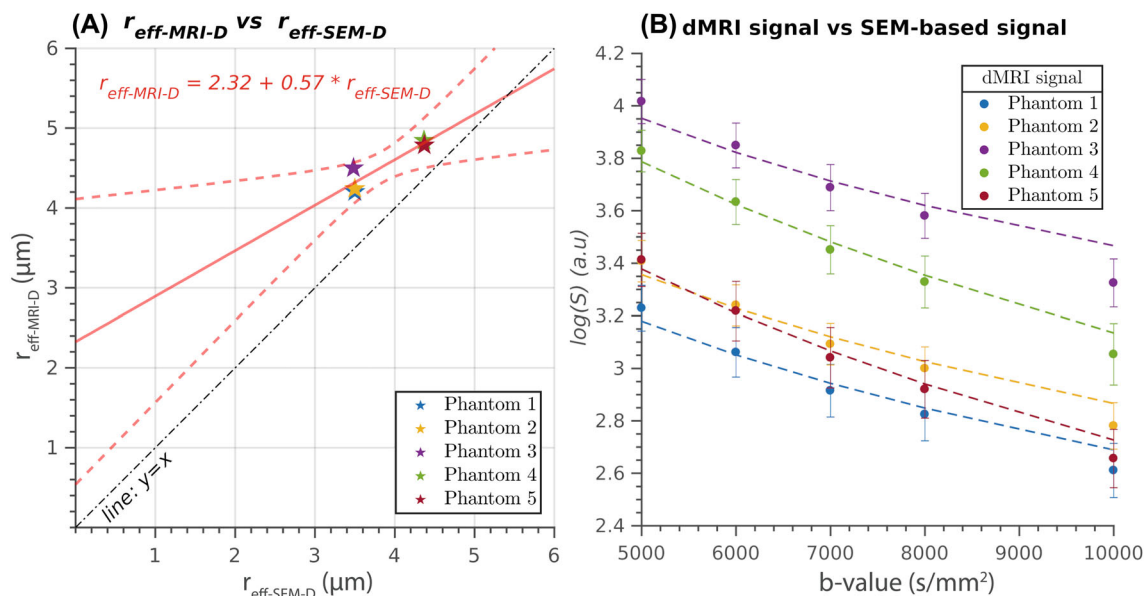


FIGURE 6 (A) Illustrates the linear relationship between the diffusion MRI (dMRI)-based fiber radius (y-axis, $r_{\text{eff-MRI-D}}$) estimated from the measured multi-shell dMRI data using the spherical mean power-law approach and the effective radius (x-axis, $r_{\text{eff-SEM-D}}$) calculated from the synthetic diffusion signal generated using the radii distributions measured from the scanning electron microscopy (SEM) images. Each data point represents the radius estimate obtained from the mean signal of all voxels within each phantom. The regression line compares the estimates from both methods, whereas the “ $y=x$ line of identity” is a reference for perfect agreement. (B) Depicts the logarithm of the measured multi-shell diffusion data (dMRI) and the SEM-based generated synthetic signal as a function of the b -value in the whole interval. The data points correspond to the mean values and SDs across all voxels within each phantom.

Nevertheless, the radii estimated by the spherical mean power-law method showed less variability.

Another contribution of this study is the numerical approach to estimate the effective radius from the underlying radius distribution. This approach offers several advantages as it does not rely on specific theoretical approximations. It can be applied more universally to different acquisition sequences, MRI contrasts, and materials with varying pore sizes. By comparing the generated synthetic signals with the measured data, this numerical approach allows us to assess the ability of the used relaxation or diffusion models to explain the observed data. It is worth noting that previous studies proposed an expression for estimating the effective radius in dMRI based on the assumptions that the dMRI signal from the intra-fiber compartment can be approximated by the wide pulse or Neuman limit and that the diffusion model can be well-approximated by a first-order Taylor expansion, resulting in $r_{\text{eff-SEM}} = (\langle r^6 \rangle / \langle r^2 \rangle)^{1/4}$.^{2,44} However, these assumptions only hold for a population of microfibers with radii smaller than $2.5 \mu\text{m}$ and do not apply to our study. In Figure C1 of Appendix C, we conducted a supplementary analysis revealing that the signals derived from these approximations do not align with those predicted by the van Gelderen model across the entire range of measured radii in the phantoms. As a result, the new numerical approach proposed in this study becomes crucial for

accurately determining the effective radius from the radius distribution.

Additionally, we introduced a general diffusion-relaxation theoretical model for the spherical mean signal originating from water molecules within a distribution of cylinders with varying radii. The two evaluated models are specific cases of this more comprehensive model. Examining the approximations made by each model provides valuable insights into their underlying assumptions. The pure-relaxation model provides a correct approximation for data acquired with high b -values, which effectively attenuates the extra-fiber signal. However, the diffusion gradients should not be strong enough to reduce the sensitivity of the data to the diffusion process inside the cylindrical pores. This setting may be more appropriate for clinical scanners with weaker diffusion gradients ($\sim <100 \text{ mT/m}$). Conversely, the spherical mean power-law approach represents the solution to the general diffusion-relaxation model when the relaxation effect is neglected. In this case, it is less straightforward to determine how acquisition parameters should be adjusted to mitigate the influence of relaxation on the measured signal. Interestingly, by considering Eqs. (1), (7), and (8) it is possible to demonstrate that neglecting the relaxation effect in the spherical mean power-law approach leads to an effective radius estimate corresponding to a distorted radius distribution $\tilde{P}(r)$, which right-hand tail is inflated,

leading to overestimated radii $\tilde{r}_{\text{eff-MRI-D}}$. This theoretical prediction aligns with the findings presented in Figure 6. For more technical details, see Appendix D.

It is important to mention that this is not the first study using phantoms of hollow axon-mimicking fibers. Similar phantoms built with the co-electrospinning technique^{45,56-58} have been used previously to validate other dMRI techniques, including diffusion tensor imaging and fiber tracking,^{45,59} microscopic fractional anisotropy using q-space trajectory encoding,⁶⁰ anomalous diffusion,⁶¹ estimation of pore sizes in tumor tissue phantoms,^{62,63} as well as to investigate the stability and reproducibility of various dMRI-derived parameters,⁶⁴ the validation of multidimensional dMRI sequences with spectrally modulated gradients,⁶⁵ and to estimate pore sizes in similar complex microfiber environments using multi-shell dMRI.⁴⁷

This study has some limitations. First, the inner fiber radii estimated from SEM images are assumed to be the ground truth. However, the substrates generated per phantom are heterogeneous because it is not possible to control the resulting distributions of pore sizes in a precise way. As a result, different substrates from the same phantom had different distributions of pore sizes. To tackle this limitation, various SEM images from different substrates were used to estimate the mean effective radii per phantom. Accordingly, the effective radius predicted by the relaxation and diffusion models used the mean signal for all the voxels in the phantoms, and a voxelwise analysis was not possible. Second, the SEM-based radii were calculated by approximating intra-fiber pores as cylinders because of the inherent challenge of accurately representing irregular pore surfaces using MRI-based methods. This approximation, although essential, introduces potential biases. For example, we do not know how the irregularity of the pore shape can deviate the measured dMRI data from the signal generated by a cylinder with the same volume (or cross-sectional surface area). Therefore, such potential discrepancies might have affected our results and could explain the signal differences observed in Figure 6B. However, it is worth noting that this issue is present in any clinical application of the evaluated methods. In brain data, there are other factors affecting the interpretation of results, including the effects of beading (radius variations along the axon), undulations (local variations in direction along the axon), and fiber dispersion.^{43,66,67} Addressing these limitations would require a more comprehensive technique capable of modeling these factors, which is beyond the scope of our work. Third, although the used phantoms have a significant population of fibers with small radii, like those found in postmortem white matter axons (i.e., $<1\ \mu\text{m}$)^{21,23,68,69} the proportion of fibers with larger sizes is much higher. Therefore, our findings should not be considered a strong

demonstration of the validity of the used techniques for estimating axon radius in brain white matter. Such a demonstration should require MRI data and histological analyses from the same brains. Fourth, as a single radial diffusivity and intra-fiber T_2 were estimated per phantom, the predicted radius is the effective radius. To determine the whole radius distribution, future studies should generalize the used models to estimate distributions of diffusivities or T_2 times, respectively.⁷⁰⁻⁷⁷ Fifth, all our analyses used raw diffusion-relaxation MRI data without preprocessing, so the Rician bias⁷⁸ may partially affect our results. Nevertheless, we verified that the SNR of our data was 34 and visually inspected the data to confirm our images were not dominated by noise. In a preliminary analysis (results not presented), we denoised the data using the Marchenko-Pastur Principal Component Analysis⁷⁹ method and attenuated the Rician bias accordingly. However, we noted that the preprocessed data were slightly over-smoothed, and the correlation analysis comparing the estimated radii produced worse results. Therefore, we opted to use the raw data to avoid the smoothing effects and prevent contamination of the diffusion-relaxation MRI signal by voxels outside the phantoms. Finally, despite our multi-shell dMRI acquisition protocol used high and well-separated b -values (from 5000 to 10 000 s/mm^2) to attenuate the dMRI signals from the extra-fiber pores significantly and to get “enough” signal contrast to estimate the intra-fiber radial diffusivity, these b -values are not necessarily the optimal ones to assess the fiber radius. For example, in a previous study, b -values up to 30 000 s/mm^2 were used to estimate axon radii in the human white matter.⁸⁰ Therefore, our findings are specific to the implemented acquisition protocols and should not be extrapolated to other acquisition sequences and parameters.

6 | CONCLUSIONS

This study demonstrates the feasibility of using intra-fiber T_2 times derived from diffusion-relaxation MRI data to predict the inner pore sizes of hollow axon-mimicking phantom fibers, as validated against measurements obtained from SEM images. Additionally, it confirms the sensitivity of the spherical mean power-law approach in estimating intra-fiber pore sizes from multi-shell dMRI data. The T_2 -based estimation approach relies on a calibration step that requires knowledge of the ground-truth radius distribution in specific regions (phantoms) to determine its surface relaxivity. This limitation is absent in the pure dMRI model. However, the T_2 -based estimation technique offers the advantage of using a smaller b -value. In contrast, the ultra-high diffusion gradients required

by the dMRI-based approach are only achievable in preclinical or “Connectom” 3T human scanners.

AFFILIATIONS

¹Signal Processing Laboratory 5 (LTS5), Ecole Polytechnique Fédérale de Lausanne (EPFL), Lausanne, Switzerland

²Danish Research Centre for Magnetic Resonance (DRCMR), Centre for Functional and Diagnostic Imaging and Research, Copenhagen University Hospital Amager and Hvidovre, Copenhagen, Denmark

³Department of Applied Mathematics and Computer Science, Technical University of Denmark (DTU), Kongens Lyngby, Denmark

⁴Centre for Medical Image Computing, Department of Medical Physics and Biomedical Engineering, University College London (UCL), London, UK

⁵MicroPhantoms Limited, Cambridge, UK

⁶Translational Imaging in Neurology (ThINk) Basel, Department of Biomedical Engineering, University Hospital Basel and University of Basel, Basel, Switzerland

⁷Radiology Department, Centre Hospitalier Universitaire Vaudois and University of Lausanne, Lausanne, Switzerland

⁸Centre d'Imagerie Biomédicale (CIBM), EPFL, Lausanne, Switzerland

⁹Cardiff University Brain Research Imaging Centre (CUBRIC), Cardiff University, Cardiff, UK

¹⁰Department of Neuroinflammation, Queen Square Institute of Neurology, University College London (UCL), London, UK

¹¹Bioxydyn Limited, Manchester, UK

ACKNOWLEDGMENTS

Erick J. Canales-Rodríguez is supported by the Swiss National Science Foundation, Ambizione grant PZ00P2_185814. Marco Pizzolato acknowledges funding from Danmarks Frie Forskningsfond with case number 10.46540/3105-00129B. Feng-Lei Zhou was supported by the NIHR UCLH Biomedical Research Centre grant and UCL Department of Medical Physics and Biomedical Engineering and EPSRC (EP/M020533/1; CMIC Pump-Priming Award). This research was partially funded by a Wellcome Trust Investigator Award (096646/Z/11/Z) and a Wellcome Trust Strategic Award (104943/Z/14/Z). For the purpose of open access, the author has applied a CC BY public copyright license to any Author Accepted Manuscript version arising from this submission. Tim B. Dyrby has received funding from the European Research Council (ERC) under the European Union's Horizon Europe research and innovation programme (101044180). Views and opinions expressed are, however, those of the author(s) only and do not necessarily reflect those of the European Union or the European Research Council. Neither the European Union nor the granting authority can be held responsible for them.

CONFLICT OF INTEREST STATEMENT

Geoffrey Parker is a shareholder and director of Bioxydyn Limited, a company with an interest in imaging

biomarkers. He is also a shareholder and director of Queen Square Analytics Limited, a company with an interest in neuroimaging. Fenglei Zhou provides consultancy on MRI phantom development at MicroPhantoms, which provides imaging phantom services. The other authors have nothing to disclose.

DATA AVAILABILITY STATEMENT

The acquired MRI datasets and estimation scripts will be freely available at <https://github.com/ejcanalesr/diffusion-relaxation-biomimetic-phantoms> to facilitate reproducible research.

ORCID

Erick J. Canales-Rodríguez  <https://orcid.org/0000-0001-6421-2633>

Marco Pizzolato  <https://orcid.org/0000-0003-2455-4596>

Feng-Lei Zhou  <https://orcid.org/0000-0002-8348-4658>

Muhammed Barakovic  <https://orcid.org/0000-0001-8557-9223>

Jean-Philippe Thiran  <https://orcid.org/0000-0003-2938-9657>

Derek K. Jones  <https://orcid.org/0000-0003-4409-8049>

Geoffrey J. M. Parker  <https://orcid.org/0000-0003-2934-2234>

Tim B. Dyrby  <https://orcid.org/0000-0003-3361-9734>

REFERENCES

- De Santis S, Jones DK, Roebroek A. Including diffusion time dependence in the extra-axonal space improves in vivo estimates of axonal diameter and density in human white matter. *Neuroimage*. 2016;130:91-103. doi:10.1016/j.neuroimage.2016.01.047
- Veraart J, Nunes D, Rudrapatna U, et al. Noninvasive quantification of axon radii using diffusion MRI. *Elife*. 2020;9:e49855. doi:10.7554/eLife.49855
- Fan Q, Nummenmaa A, Witzel T, et al. Axon diameter index estimation independent of fiber orientation distribution using high-gradient diffusion MRI. *Neuroimage*. 2020;222:117197. doi:10.1016/j.neuroimage.2020.117197
- Pizzolato M, Wassermann D, Deriche R, Thiran JP, Fick R. Orientation-dispersed apparent axon diameter via multi-stage spherical mean optimization. *Mathematics and Visualization*. Springer; 2019:91-101. doi:10.1007/978-3-030-05831-9_8
- Mandal D, Ning L, Rath Y. In-vivo estimation of axon radii from clinical scanners. In: *2023 IEEE 20th International Symposium on Biomedical Imaging (ISBI)*. IEEE Computer Society; 2023:1-5.
- Duval T, McNab JA, Setsompop K, et al. In vivo mapping of human spinal cord microstructure at 300 mT/m. *Neuroimage*. 2015;118:494-507. doi:10.1016/J.NEUROIMAGE.2015.06.038
- Dyrby TB, Søgaard LV, Hall MG, Ptito M, Alexander DC. Contrast and stability of the axon diameter index from microstructure imaging with diffusion MRI. *Magn Reson Med*. 2013;70:711-721. doi:10.1002/mrm.24501
- Assaf Y, Blumenfeld-Katzir T, Yovel Y, Basser PJ. AxCaliber: a method for measuring axon diameter distribution

- from diffusion MRI. *Magn Reson Med*. 2008;59:1347-1354. doi:10.1002/mrm.21577
9. Alexander DC. A general framework for experiment design in diffusion MRI and its application in measuring direct tissue-microstructure features. *Magn Reson Med*. 2008;60:439-448. doi:10.1002/mrm.21646
 10. Assaf Y, Basser PJ. Composite hindered and restricted model of diffusion (CHARMED) MR imaging of the human brain. *Neuroimage*. 2005;27:48-58. doi:10.1016/j.neuroimage.2005.03.042
 11. Assaf Y, Freidlin RZ, Rohde GK, Basser PJ. New modeling and experimental framework to characterize hindered and restricted water diffusion in brain white matter. *Magn Reson Med*. 2004;52:965-978. doi:10.1002/mrm.20274
 12. Barakovic M, Girard G, Schiavi S, et al. Bundle-specific axon diameter index as a new contrast to differentiate white matter tracts. *Front Neurosci*. 2021;15:646034. doi:10.3389/FNINS.2021.646034
 13. Pizzolato M, Canales-Rodríguez EJ, Andersson M, Dyrby TB. Axial and radial axonal diffusivities and radii from single encoding strongly diffusion-weighted MRI. *Med Image Anal*. 2023;86:102767. doi:10.1016/J.MEDIA.2023.102767
 14. Costa AR, Pinto-Costa R, Sousa SC, Sousa MM. The regulation of axon diameter: from axonal circumferential contractility to activity-dependent axon swelling. *Front Mol Neurosci*. 2018;11:319. doi:10.3389/FNMOL.2018.00319
 15. Drakesmith M, Harms R, Rudrapatna SU, Parker GD, Evans CJ, Jones DK. Estimating axon conduction velocity in vivo from microstructural MRI. *Neuroimage*. 2019;203:116186. doi:10.1016/J.NEUROIMAGE.2019.116186
 16. Waxman SG, Bennett MVI. Relative conduction velocities of small myelinated and non-myelinated fibres in the central nervous system. *Nat New Biol*. 1972;238:217-219. doi:10.1038/newbio238217a0
 17. Oliveira R, Pelentritou A, Di Domenicantonio G, De Lucia M, Lutti A. In vivo estimation of axonal morphology from magnetic resonance imaging and electroencephalography data. *Front Neurosci*. 2022;16:874023. doi:10.3389/fnins.2022.874023
 18. Nilsson M, Lasić S, Drobnjak I, Topgaard D, Westin CF. Resolution limit of cylinder diameter estimation by diffusion MRI: the impact of gradient waveform and orientation dispersion. *NMR Biomed*. 2017;30:30. doi:10.1002/nbm.3711
 19. Edgar JM, Griffiths IR. *White Matter Structure: A Microscopist's View*. In: Diffusion MRI (2nd ed.). San Diego: Academic Press; 2014:127-153. doi:10.1016/B978-0-12-396460-1.00007-X
 20. Dyrby TB, Innocenti GM, Bech M, Lundell H. Validation Strategies for the Interpretation of Microstructure Imaging Using Diffusion MRI. *Neuroimage*. 2018;182:62-79. doi:10.1016/j.neuroimage.2018.06.049
 21. Caminiti R, Carducci F, Piervincenzi C, et al. Diameter, length, speed, and conduction delay of callosal axons in macaque monkeys and humans: comparing data from histology and magnetic resonance imaging diffusion tractography. *J Neurosci*. 2013;33:14501-14511. doi:10.1523/JNEUROSCI.0761-13.2013
 22. Innocenti GM, Vercelli A, Caminiti R. The diameter of cortical axons depends both on the area of origin and target. *Cereb Cortex*. 2014;24:2178-2188. doi:10.1093/cercor/bht070
 23. Innocenti GM, Caminiti R, Aboitiz F. Comments on the paper by Horowitz et al. (2014). *Brain struct Funct*. 2015;220:1789-1790. doi:10.1007/s00429-014-0974-7
 24. Jones DK, Alexander DC, Bowtell R, et al. Microstructural imaging of the human brain with a "super-scanner": 10 key advantages of ultra-strong gradients for diffusion MRI. *Neuroimage*. 2018;182:8-38. doi:10.1016/j.neuroimage.2018.05.047
 25. Müller-Petke M, Dlugosch R, Lehmann-Horn J, Ronczka M. Nuclear magnetic resonance average pore-size estimations outside the fast-diffusion regime. *Geophysics*. 2015;80:D195-D206. doi:10.1190/geo2014-0167.1
 26. Sørland GH, Djurhuus K, Widerøe HC, Lien JR, Skauge A. Absolute pore size distribution from NMR. *Diffusion Fundamentals*. 2007;5:4.1-4.5. [https://diffusion.uni-leipzig.de/pdf/volume5/diff_fund_5\(2007\)4.pdf](https://diffusion.uni-leipzig.de/pdf/volume5/diff_fund_5(2007)4.pdf)
 27. Mohnke O, Hughes B. Jointly deriving NMR surface relaxivity and pore size distributions by NMR relaxation experiments on partially desaturated rocks. *Water Resour Res*. 2014;50:5309-5321. doi:10.1002/2014WR015282
 28. Hurlimann MD, Latour LL, Sotak CH. Diffusion measurement in sandstone core: NMR determination of surface-to-volume ratio and surface relaxivity. *Magn Reson Imaging*. 1994;12:325-327.
 29. Slijkerman WFJ, Hofman JP. Determination of surface relaxivity from NMR diffusion measurements. *Magn Reson Imaging*. 1998;16:541-544. doi:10.1016/S0730-725X(98)00058-7
 30. Brownstein KR, Tarr CE. Spin-lattice relaxation in a system governed by diffusion. *J Magn Reson*. 1977;26:17-24. doi:10.1016/0022-2364(77)90230-X
 31. Brownstein KR, Tarr CE. Importance of classical diffusion in NMR studies of water in biological cells. *Phys Rev A*. 1979;19:2446-2453. doi:10.1103/PhysRevA.19.2446
 32. Barakovic M, Pizzolato M, Granziera C, Thiran J-P, Jones DK, Canales-Rodríguez EJ. Is the intra-axonal T2 relaxation time related to the axonal calibre? A diffusion-relaxation and histological data study. In: ISMRM 2022, Abstract 0180. London, UK 2022.
 33. Barakovic M, Pizzolato M, Tax CMW, et al. Estimating axon radius using diffusion-relaxation MRI: calibrating a surface-based relaxation model with histology. *Front Neurosci*. 2023;17:1209521. doi:10.3389/FNINS.2023.1209521
 34. McKinnon ET, Jensen JH. Measuring intra-axonal T2 in white matter with direction-averaged diffusion MRI. *Magn Reson Med*. 2019;81:2985-2994. doi:10.1002/MRM.27617
 35. Mackay A, Whittall K, Adler J, Li D, Paty D, Graeb D. In vivo visualization of myelin water in brain by magnetic resonance. *Magn Reson Med*. 1994;31:673-677. doi:10.1002/mrm.1910310614
 36. Jensen JH, Russell Glenn G, Helpert JA. Fiber ball imaging. *Neuroimage*. 2016;124:824-833. doi:10.1016/j.neuroimage.2015.09.049
 37. Kaden E, Kelm ND, Carson RP, Does MD, Alexander DC. Multi-compartment microscopic diffusion imaging. *Neuroimage*. 2016;139:346-359. doi:10.1016/j.neuroimage.2016.06.002
 38. van Gelderen P, Despres D, van Zijl PC, et al. Evaluation of restricted diffusion in cylinders. Phosphocreatine in rabbit leg muscle. *J Magn Reson B*. 1994;103:255-260. doi:10.1006/JMRB.1994.1038
 39. Zimmerman JR, Brittin WE. Nuclear magnetic resonance studies in multiple phase systems: lifetime of a water molecule in an adsorbing phase on silica gel. *J Phys Chem*. 1957;61:1328-1333. doi:10.1021/j150556a015

40. Kroenke CD, Ackerman JJH, Yablonskiy DA. On the nature of the NAA diffusion attenuated MR signal in the central nervous system. *Magn Reson Med*. 2004;52:1052-1059. doi:10.1002/mrm.20260
41. Anderson AW. Measurement of fiber orientation distributions using high angular resolution diffusion imaging. *Magn Reson Med*. 2005;54:1194-1206. doi:10.1002/mrm.20667
42. Neuman CH. Spin echo of spins diffusing in a bounded medium. *J Chem Phys*. 1974;60:4508-4511. doi:10.1063/1.1680931
43. Andersson M, Pizzolato M, Kjer HM, Skodborg KF, Lundell H, Dyrby TB. Does powder averaging remove dispersion bias in diffusion MRI diameter estimates within real 3D axonal architectures? *Neuroimage*. 2022;248:118718. doi:10.1016/j.neuroimage.2021.118718
44. Burcaw LM, Fieremans E, Novikov DS. Mesoscopic structure of neuronal tracts from time-dependent diffusion. *Neuroimage*. 2015;114:18-37. doi:10.1016/j.neuroimage.2015.03.061
45. Hubbard PL, Zhou FL, Eichhorn SJ, Parker GJM. Biomimetic phantom for the validation of diffusion magnetic resonance imaging. *Magn Reson Med*. 2015;73:299-305.
46. Zhou FL, Parker GJM, Eichhorn SJ, Hubbard Cristinacce PL. Production and cross-sectional characterization of aligned co-electrospun hollow microfibrillar bulk assemblies. *Mater Charact*. 2015;109:25-35. doi:10.1016/j.matchar.2015.09.010
47. Huang CC, Hsu CCH, Zhou FL, et al. Validating pore size estimates in a complex microfiber environment on a human MRI system. *Magn Reson Med*. 2021;86:1514-1530.
48. Pizzolato M, Andersson M, Canales-Rodríguez EJ, Thiran JP, Dyrby TB. Axonal T2 estimation using the spherical variance of the strongly diffusion-weighted MRI signal. *Magn Reson Imaging*. 2022;86:118-134.
49. Barakovic M, Tax CMW, Rudrapatna U, et al. Resolving bundle-specific intra-axonal T2 values within a voxel using diffusion-relaxation tract-based estimation. *Neuroimage*. 2021;227:117617. doi:10.1016/j.neuroimage.2020.117617
50. Tax CMW, Kleban E, Chamberland M, Baraković M, Rudrapatna U, Jones DK. Measuring compartmental T2-orientational dependence in human brain white matter using a tiltable RF coil and diffusion-T2 correlation MRI. *Neuroimage*. 2021;236:117967. doi:10.1016/j.neuroimage.2021.117967
51. Kaden E, Kruggel F, Alexander DC. Quantitative mapping of the per-axon diffusion coefficients in brain white matter. *Magn Reson Med*. 2016;75:1752-1763. doi:10.1002/mrm.25734
52. Lasić S, Szczepankiewicz F, Eriksson S, Nilsson M, Topgaard D. Microanisotropy imaging: quantification of microscopic diffusion anisotropy and orientational order parameter by diffusion MRI with magic-angle spinning of the q-vector. *Front Phys*. 2014;2:2. doi:10.3389/fphy.2014.00011
53. Edén M. Computer simulations in solid-state NMR. III Powder averaging. *Concepts Magn Reson Part A*. 2003;18A:24-55. doi:10.1002/CMR.A.10065
54. Virtanen P, Gommers R, Oliphant TE, et al. SciPy 1.0: fundamental algorithms for scientific computing in python. *Nat Methods*. 2020;17:261-272. doi:10.1038/s41592-019-0686-2
55. Bosworth LA, Downes S. Physicochemical characterisation of degrading polycaprolactone scaffolds. *Polym Degrad Stab*. 2010;95:2269-2276. doi:10.1016/J.POLYMDEGRADSTAB.2010.09.007
56. Zhou FL, Hubbard PL, Eichhorn SJ, Parker GJM. Coaxially electrospun axon-mimicking fibers for diffusion magnetic resonance imaging. *ACS Appl Mater Interfaces*. 2012;4:6311-6316. doi:10.1021/am301919s
57. Zhou FL, Li Z, Gough JE, Hubbard Cristinacce PL, Parker GJM. Axon mimicking hydrophilic hollow polycaprolactone microfibres for diffusion magnetic resonance imaging. *Mater Des*. 2018;137:394-403. doi:10.1016/j.matdes.2017.10.047
58. Zhou FL, McHugh DJ, Li Z, Gough JE, Williams GR, Parker GJ. Coaxial electrospun biomimetic copolymer fibres for application in diffusion magnetic resonance imaging. *Bioinspir Biomim*. 2021;16:046016. doi:10.1088/1748-3190/ABEDCF
59. Teh I, Zhou FL, Hubbard Cristinacce PL, Parker GJM, Schneider JE. Biomimetic phantom for cardiac diffusion MRI. *J Magn Reson Imaging*. 2016;43:594-600. doi:10.1002/jmri.25014
60. Kerkelä L, Nery F, Callaghan R, et al. Comparative analysis of signal models for microscopic fractional anisotropy estimation using q-space trajectory encoding. *Neuroimage*. 2021;242:118445. doi:10.1016/j.neuroimage.2021.118445
61. Ye AQ, Cristinacce PLH, Zhou FL, Yin Z, Parker GJM, Magin RL. Diffusion tensor MRI phantom exhibits anomalous diffusion. *2014 36th Annual International Conference of the IEEE Engineering in Medicine and Biology Society, EMBC 2014*. Vol 2014. Annu Int Conf IEEE Eng Med Biol Soc; 2014:746-749.
62. McHugh DJ, Zhou FL, Wimpenny I, et al. A biomimetic tumor tissue phantom for validating diffusion-weighted MRI measurements. *Magn Reson Med*. 2018;80:147-158.
63. Zhou FL, Wu HH, McHugh DJ, et al. Co-electrospraying of tumour cell mimicking hollow polymeric microspheres for diffusion magnetic resonance imaging. *Mater Sci Eng C*. 2019;101:217-227. doi:10.1016/j.msec.2019.03.062
64. Grech-Sollars M, Zhou FL, Waldman AD, Parker GJM, Hubbard Cristinacce PL. Stability and reproducibility of co-electrospun brain-mimicking phantoms for quality assurance of diffusion MRI sequences. *Neuroimage*. 2018;181:395-402. doi:10.1016/j.neuroimage.2018.06.059
65. Lundell H, Nilsson M, Dyrby TB, et al. Multidimensional diffusion MRI with spectrally modulated gradients reveals unprecedented microstructural detail. *Sci Rep*. 2019;9:1-12. doi:10.1038/s41598-019-45235-7
66. Lee HH, Papaioannou A, Kim SL, Novikov DS, Fieremans E. A time-dependent diffusion MRI signature of axon caliber variations and beading. *Commun Biol*. 2020;3:354.
67. Lee HH, Jespersen SN, Fieremans E, Novikov DS. The impact of realistic axonal shape on axon diameter estimation using diffusion MRI. *Neuroimage*. 2020;223:117228. doi:10.1016/j.neuroimage.2020.117228
68. Caminiti R, Ghaziri H, Galuske R, Hof PR, Innocenti GM. Evolution amplified processing with temporally dispersed slow neuronal connectivity in primates. *Proc Natl Acad Sci U S A*. 2009;106:19551-19556. doi:10.1073/PNAS.0907655106
69. Andersson M, Kjer HM, Rafael-Patino J, et al. Axon morphology is modulated by the local environment and impacts the noninvasive investigation of its structure-function relationship. *Proc Natl Acad Sci U S A*. 2020;117:33649-33659. doi:10.1073/PNAS.2012533117/SUPPL_FILE/PNAS.2012533117.SAPP.PDF
70. Canales-Rodríguez EJ, Pizzolato M, Piredda GFGF, et al. Comparison of non-parametric T2 relaxometry methods for myelin water quantification. *Med Image Anal*. 2021;69:101959. doi:10.1016/j.media.2021.101959

71. Yu T, Canales-Rodríguez EJ, Pizzolato M, et al. *Model-Informed Machine Learning for Multi-Component T2 Relaxometry*. Elsevier; 2020:101940. doi:10.1016/j.media.2020.101940
72. Canales-Rodríguez EJ, Pizzolato M, Yu T, et al. Revisiting the T2 spectrum imaging inverse problem: Bayesian regularized non-negative least squares. *Neuroimage*. 2021;244:118582. doi:10.1016/j.neuroimage.2021.118582
73. Canales-Rodríguez EJ, Alonso-Lana S, Verdolini N, et al. Age- and gender-related differences in brain tissue microstructure revealed by multi-component T2 relaxometry. *Neurobiol Aging*. 2021;106:68-79. doi:10.1016/J.NEUROBIOLAGING.2021.06.002
74. Piredda GF, Hilbert T, Canales-Rodríguez EJ, et al. Fast and high-resolution myelin water imaging: accelerating multi-echo GRASE with CAIPIRINHA. *Magn Reson Med*. 2021;85:209-222. doi:10.1002/mrm.28427
75. MacKay A, Laule C, Vavasour I, Bjarnason T, Kolind S, Mädlar B. Insights into brain microstructure from the T2 distribution. *Magn Reson Imaging*. 2006;24:515-525. doi:10.1016/j.mri.2005.12.037
76. Daducci A, Canales-Rodríguez EJ, Zhang H, Dyrby TB, Alexander DC, Thiran J-PP. Accelerated microstructure imaging via convex optimization (AMICO) from diffusion MRI data. *Neuroimage*. 2015;105:32-44. doi:10.1016/j.neuroimage.2014.10.026
77. Benjamini D, Basser PJ. Water mobility spectral imaging of the spinal cord: parametrization of model-free laplace MRI. *Magn Reson Imaging*. 2019;56:187-193. doi:10.1016/j.mri.2018.12.001
78. Gudbjartsson H, Patz S. The Rician distribution of noisy MRI data. *Magn Reson Med*. 1995;34:910-914. doi:10.1002/MRM.1910340618
79. Veraart J, Novikov DS, Christiaens D, Ades-aron B, Sijbers J, Fieremans E. Denoising of diffusion MRI using random matrix theory. *Neuroimage*. 2016;142:394-406. doi:10.1016/j.neuroimage.2016.08.016
80. Veraart J, Raven EP, Edwards LJ, Weiskopf N, Jones DK. The variability of MR axon radii estimates in the human white matter. *Hum Brain Mapp*. 2021;42:2201-2213. doi:10.1002/hbm.25359

How to cite this article: Canales-Rodríguez EJ, Pizzolato M, Zhou F-L, et al. Pore size estimation in axon-mimicking microfibers with diffusion-relaxation MRI. *Magn Reson Med*. 2024;1-18. doi: 10.1002/mrm.29991

APPENDIX A

The van Gelderen model,³⁸ which is based on the Gaussian phase distribution approximation, relates the radial diffusivity D_{\perp} and the radius r as:

$$D_{\perp} = \frac{2\gamma^2 G^2 r^4}{bD_0} \sum_{m=1}^{\infty} \frac{t_c}{\alpha_m^6 (\alpha_m^2 - 1)} \times \left[2 \frac{\alpha_m^2}{t_c} \delta - 2 + 2e^{-\frac{\alpha_m^2 \delta}{t_c}} + 2e^{-\frac{\alpha_m^2 \Delta}{t_c}} - e^{-\frac{\alpha_m^2 (\Delta - \delta)}{t_c}} - e^{-\frac{\alpha_m^2 (\Delta + \delta)}{t_c}} \right], \quad (\text{A1})$$

where $D_0 \equiv D_{\parallel}$ is the free diffusion coefficient, which is equal to the intra-fiber parallel diffusivity when there is no restriction along the principal axes of the cylinders, γ denotes the gyromagnetic ratio, $\delta/\Delta/G$ are the duration/separation/strength of the diffusion gradient, respectively, $t_c = r^2/D_{\parallel}$, $b = \gamma^2 G^2 \delta^2 (\Delta - \delta/3)$, and α_m are the roots of the derivative of the Bessel function of the first kind of order 1, $J'_1(\alpha_m) = 0$.

In the Neuman limit,⁴² that is, $\Delta \gg \delta \gg r^2/D_{\parallel}$, Eq. (A1) becomes

$$D_{\perp}(r) \approx \frac{7}{48} \frac{\gamma^2 G^2 \delta r^4}{bD_{\parallel}}. \quad (\text{A2})$$

In this work, we derived a new solution with a less restrictive limit. For $\Delta \gg \delta$ and $\delta \in (0, \sim r^2/D_{\parallel})$, Eq. (A1) becomes,

$$\begin{aligned} D_{\perp}(r) &\approx \frac{2\gamma^2 G^2 r^4}{bD_{\parallel}} \sum_{m=1}^{\infty} \frac{t_c}{\alpha_m^6 (\alpha_m^2 - 1)} \left[2\alpha_m^2 \frac{\delta}{t_c} - 2 + 2e^{-\alpha_m^2 \frac{\delta}{t_c}} \right] \\ &= \frac{4\gamma^2 G^2 r^4}{bD_{\parallel}} \sum_{m=1}^{\infty} \left[\frac{\alpha_m^2 \delta}{\alpha_m^6 (\alpha_m^2 - 1)} - \frac{t_c}{\alpha_m^6 (\alpha_m^2 - 1)} + \frac{t_c}{\alpha_m^6 (\alpha_m^2 - 1)} e^{-\alpha_m^2 \frac{\delta}{t_c}} \right] \\ &= \frac{4\gamma^2 G^2 r^4}{bD_{\parallel}} \left[\sum_{m=1}^{\infty} \frac{\alpha_m^2 \delta}{\alpha_m^6 (\alpha_m^2 - 1)} - t_c \sum_{m=1}^{\infty} \frac{1}{\alpha_m^6 (\alpha_m^2 - 1)} \right. \\ &\quad \left. + t_c \sum_{m=1}^{\infty} \frac{1}{\alpha_m^6 (\alpha_m^2 - 1)} e^{-\alpha_m^2 \frac{\delta}{t_c}} \right] \\ &= \frac{4\gamma^2 G^2 r^4}{bD_{\parallel}} \left[\delta \frac{7}{48 \times 4} - t_c \frac{7}{48 \times 4} \times \frac{12}{41} + t_c \frac{7}{48 \times 4} \times \frac{12}{41} e^{-\alpha_1^2 \frac{\delta}{t_c}} \right] \\ &= \frac{4\gamma^2 G^2 r^4}{bD_{\parallel}} \left[\delta \frac{7}{48 \times 4} - t_c \frac{7}{48 \times 4} \frac{12}{41} \left(1 - e^{-\alpha_1^2 \frac{\delta}{t_c}} \right) \right] \\ &= \frac{7}{48} \frac{\gamma^2 G^2 r^4}{bD_{\parallel}} \left[\delta - t_c \frac{12}{41} \left(1 - e^{-\alpha_1^2 \frac{\delta}{t_c}} \right) \right] \\ &= \frac{7}{48} \frac{\gamma^2 G^2 r^4}{bD_{\parallel}} \left[\delta - \frac{r^2}{D_{\parallel}} \frac{12}{41} \left(1 - e^{-\alpha_1^2 \frac{D_{\parallel} \delta}{r^2}} \right) \right]. \end{aligned} \quad (\text{A3})$$

To derive the previous expression, we used the following approximations:

$$\begin{aligned} \sum_{m=1}^{\infty} \frac{\alpha_m^2}{\alpha_m^6 (\alpha_m^2 - 1)} &\approx \frac{7}{48 \times 4}, \\ \sum_{m=1}^{\infty} \frac{1}{\alpha_m^6 (\alpha_m^2 - 1)} e^{-\alpha_m^2 \frac{\delta}{t_c}} &\approx \frac{1}{\alpha_1^6 (\alpha_1^2 - 1)} e^{-\alpha_1^2 \frac{\delta}{t_c}}, \\ \sum_{m=1}^{\infty} \frac{1}{\alpha_m^6 (\alpha_m^2 - 1)} &\approx \frac{1}{\alpha_1^6 (\alpha_1^2 - 1)} \approx \frac{7}{48 \times 4} \times \frac{12}{41}. \end{aligned} \quad (\text{A4})$$

Note that in Eq. (A3), the radial diffusivity is non-negative $D_{\perp}(r) \geq 0$ for all radii satisfying the condition:

$$1 - \frac{12}{41} \frac{r^2}{D_{\parallel} \delta} \left(1 - e^{-\alpha_1^2 \frac{D_{\parallel} \delta}{r^2}} \right) \geq 0. \quad (\text{A5})$$

It can be shown that the inequality in Eq. (A5) is valid for all values of r . For instance, in the limit of small r , $\delta \gg$

t_c , Eq. (A3) becomes equal to Eq. (A2). Moreover, in the limit of large radii, the exponential term in Eq. (A5) can be expanded using the Taylor series, and we obtain

$$1 - \frac{12}{41} \frac{r^2}{D_{\parallel} \delta} \left(1 - 1 + \alpha_1^2 \frac{D_{\parallel} \delta}{r^2} \right) = 1 - \frac{\alpha_1^2 12}{41} = 0.0078, \quad (\text{A6})$$

fulfilling the inequality $D_1(r) \geq 0$

APPENDIX B

The effective radius can be determined using the following derivation:

$$\begin{aligned} \exp\left(-\frac{2TE\rho_2}{r_{\text{eff-MRI-R}}}\right) &\approx \frac{\int P(r)r^2 \exp\left(-\frac{2TE\rho_2}{r}\right) dr}{\int P(r)r^2 dr} \\ &\approx \frac{\int P(r)r^2 \left(1 - \frac{2TE\rho_2}{r}\right) dr}{\int P(r)r^2 dr}, \quad \text{for } \frac{2TE\rho_2}{r} \ll 1 \\ &= 1 - \frac{2TE\rho_2 \int P(r)r dr}{\int P(r)r^2 dr} \\ &\approx \exp\left(-\frac{2TE\rho_2 \int P(r)r dr}{\int P(r)r^2 dr}\right). \end{aligned} \quad (\text{B1})$$

Therefore,

$$r_{\text{eff-MRI-R}} \approx \frac{\int P(r)r^2 dr}{\int P(r)r dr} = \langle r^2 \rangle / \langle r \rangle. \quad (\text{B2})$$

APPENDIX C

Figure C1 shows the spherical mean diffusion signal for various models, including the van Gelderen model

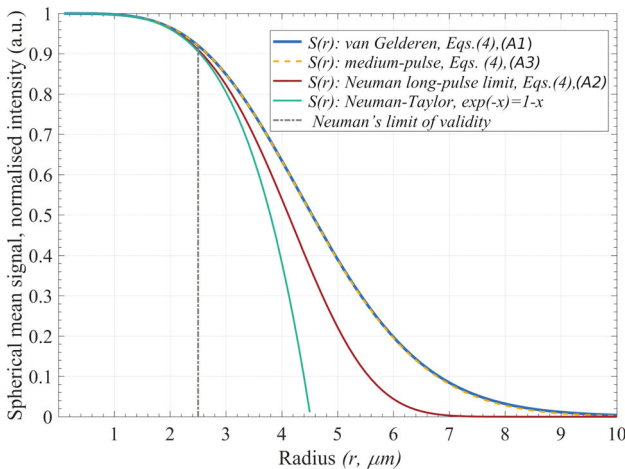


FIGURE C1 Spherical mean diffusion signal as a function of the radius for the acquisition sequence parameters used in this study with $b = 10\,000 \text{ s/mm}^2$. Four models are displayed, including the van Gelderen model (Eqs. [4] and [A1]), the medium-pulse approximation (Eqs. [4] and [A3]), the Neuman approximation in the long-pulse limit (Eqs. [4] and [A2]) and the first-order Taylor expansion of the Neuman model.

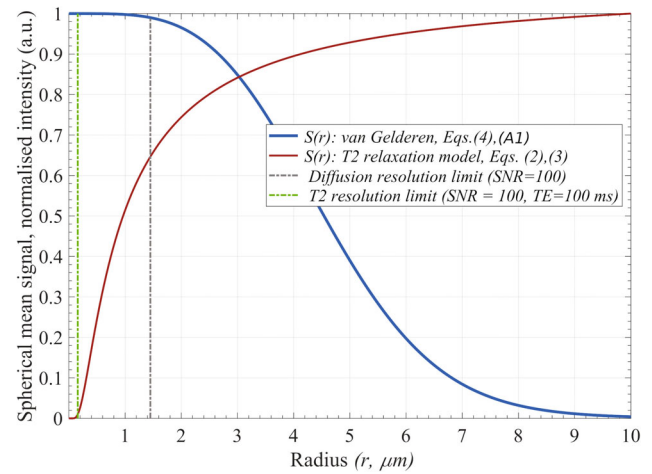


FIGURE C2 Spherical mean diffusion signal and T_2 relaxation signal as a function of the radius for the acquisition sequence parameters used in this study. The diffusion signal was generated for $b = 10\,000 \text{ s/mm}^2$, and the T_2 relaxation signal was generated for $TE = 100 \text{ ms}$, using the parameters $\bar{\rho}_2 = 3.7 \text{ nm/ms}$ and $T_2^b = 3 \text{ s}$ estimated in this study. The resolution limits are shown for the noise level $\sigma = 1/100$, that is, $SNR = 100$.

(Eqs. [4] and [A1]), the approximation for medium-pulse times (Eqs. [4] and [A3]), the Neuman long-pulse limit (Eqs. [4] and [A2]) and the first-order Taylor approximation of the Neuman model. Note that for fiber radii larger than $2.5 \mu\text{m}$, the Neuman approximations deviate from the more accurate van Gelderen model. Conversely, the approximation for medium-pulse times produced accurate results.

Figure C2 displays the spherical mean diffusion and T_2 relaxation signals as a function of the fiber radius for the acquisition parameters used in this study. Moreover, we plot the resolution limits for both normalized signals, defined as the minimum radius for which the signal deviates more than one noise SD σ compared to the signal generated for $r \rightarrow 0$. This definition considers that we cannot accurately detect signal decays smaller than σ . Note that the diffusion resolution limit is $>1.4 \mu\text{m}$, whereas the T_2 -based resolution limit is much smaller, $<0.2 \mu\text{m}$. The T_2 -based resolution limit for shorter TEs is even smaller (result not shown).

APPENDIX D

By considering Eqs. (1), (7), and (8) it is possible to demonstrate that neglecting the relaxation term in the spherical mean power-law approach leads to an effective radius estimate that corresponds to a distorted radius distribution $\tilde{P}(r)$,

$$\bar{S}_{\text{Diff}}(b, \tilde{r}_{\text{eff-MRI-D}}) \approx \frac{\int \tilde{P}(r)r^2 \bar{S}_{\text{Diff}}(b, r) dr}{\int P(r)r^2 dr}, \quad (\text{D1})$$

where $\tilde{P}(r) = P(r) \exp(-TE/T_2^i(r))$ is a distorted version of $P(r)$ because of the relaxation process not being modeled in a pure diffusion model. For a constant TE, the signal from the relaxation term $\exp(-TE/T_2^i(r))$ is higher for larger T_2^i

times. As T_2^i increases with r , the values of $\tilde{P}(r)$ for big radii are more inflated than those with small radii. Hence, this approximation leads to overestimating the effective radius calculated by the spherical mean power-law method.