



## **HAWCStab2 with super element foundations: A new tool for frequency analysis of offshore wind turbines**

**Henriksen, Lars Christian; Hansen, Anders Melchior; Kragh, Knud Abildgaard; Yde, Anders**

*Publication date:*  
2013

[Link back to DTU Orbit](#)

*Citation (APA):*

Henriksen, L. C., Hansen, A. M., Kragh, K. A., & Yde, A. (2013). *HAWCStab2 with super element foundations: A new tool for frequency analysis of offshore wind turbines*. Poster session presented at EWEA Offshore 2013, Frankfurt, Germany.

---

### **General rights**

Copyright and moral rights for the publications made accessible in the public portal are retained by the authors and/or other copyright owners and it is a condition of accessing publications that users recognise and abide by the legal requirements associated with these rights.

- Users may download and print one copy of any publication from the public portal for the purpose of private study or research.
- You may not further distribute the material or use it for any profit-making activity or commercial gain
- You may freely distribute the URL identifying the publication in the public portal

If you believe that this document breaches copyright please contact us providing details, and we will remove access to the work immediately and investigate your claim.



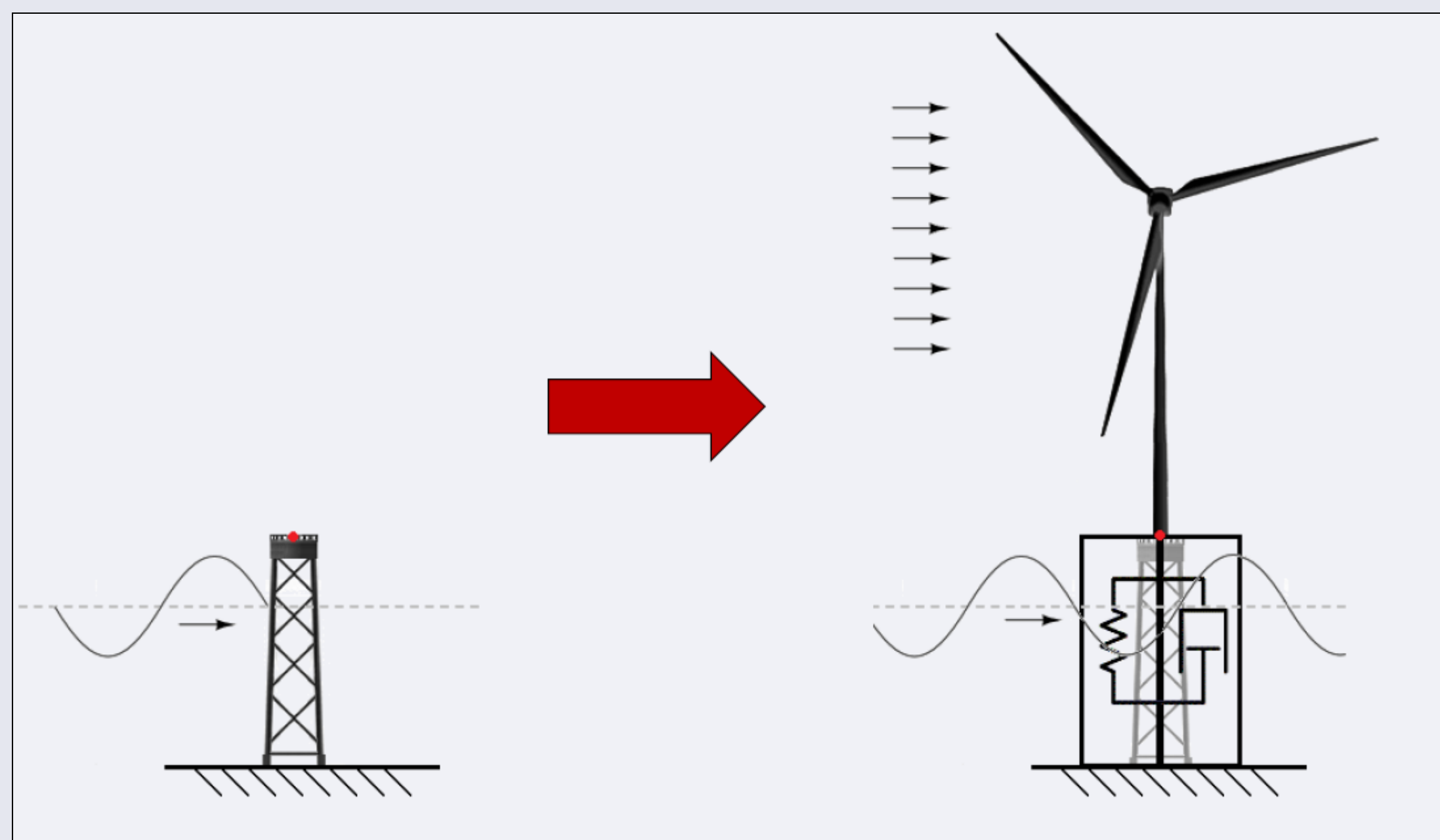
## Abstract

HAWCStab2 is a linear frequency domain aero-elastic tool, developed by DTU Wind Energy, suitable for frequency and stability analysis of horizontal axis 3 bladed wind turbines [1]. This tool has now been extended to also handle complex offshore foundation types, such as jacket structures and floating structures with mooring lines, using super elements calculated by the nonlinear time domain aero-elastic code HAWC2 [2,3].

In this work the NREL 5MW Offshore RWT [4] mounted on a jacket support structure [5] is investigated using both HAWC2 and HAWCStab2.

## Super Elements in HAWC2

A jacket structure consisting of many interconnected bodies greatly increases the computational burden of an aero-elastic code, such as HAWC2. Similar considerations apply for a floating wind turbine concept with nonlinear mooring lines and hydrodynamic interaction with the floating structure. In order to reduce the computational burden caused by the complex model, while still achieving high accuracy in the computations, super elements have been developed for HAWC2.



A super element is a reduced order model of a complex structure which seeks to reduce the number of degrees of freedom describing the structure while still maintaining the important dynamic properties of the structure.

## Super Elements in HAWCStab2

HAWCStab2 has previously only been able to analyze wind turbines with normal tubular towers and monopile foundations modeled with Timoshenko beam elements. A newly developed extension to the HAWCStab2 code has enabled the inclusion of super element in the tower base, giving rise to new possibilities for frequency analysis of wind turbines with e.g. jacket structure foundations and soil-structure interaction, as well as various floating concepts.

HAWCStab2 is modeled with an external disturbances system (aerodynamics)

$$\dot{x}_d = f_d(x_d, q_a, \dot{q}_a) \quad (1a)$$

$$F_d = g_d(x_d, q_a, \dot{q}_a, \ddot{q}_a) \quad (1b)$$

Which is coupled to a mechanical system (wind turbine structure)

$$M_a \ddot{q}_a + D_a \dot{q}_a + K_a q_a = F_a + F_d \quad (1c)$$

A new system is introduced (super element)

$$M_b \ddot{q}_b + D_b \dot{q}_b + K_b q_b = F_b \quad (1d)$$

which is connected to the wind turbine through the equality constraint

$$c(q_a, q_b) = 0 \quad (1e)$$

The fully coupled linearized system can be written as

$$-\dot{x}_d + A_d x_d + D_d \dot{q} + K_d q = 0 \quad (2a)$$

$$G x_d + M \ddot{q} + D \dot{q} + K q + C^T \lambda - F = 0 \quad (2b)$$

$$C q = 0 \quad (2c)$$

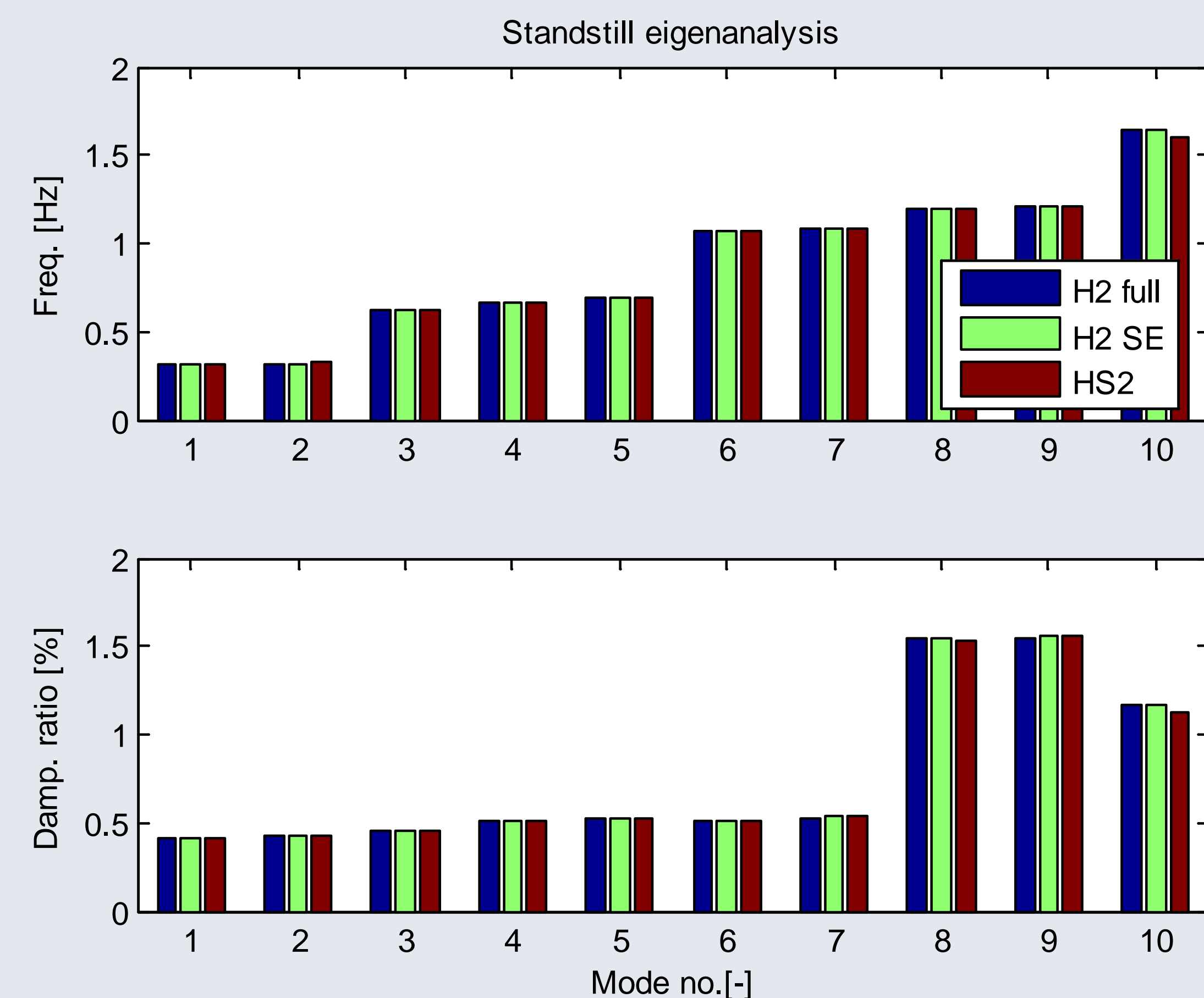
where

$$q \equiv [q_a^T \ q_b^T]^T$$

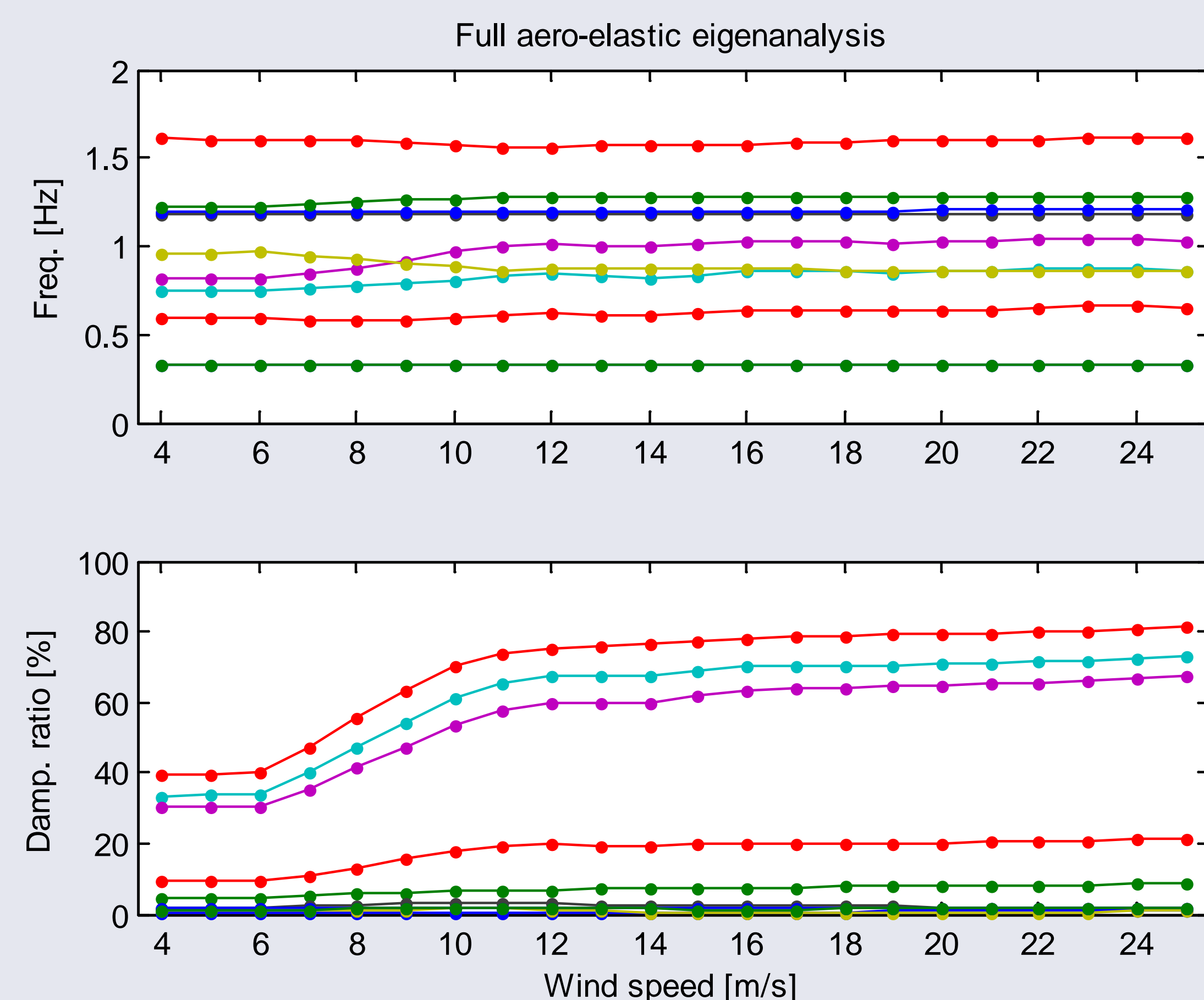
and the matrices are Jacobians with the respect to the appropriate variables.

## Results

Standstill eigenanalysis has been computed for 3 different cases: The first is, **H2 full**, is the fully coupled jacket and wind turbine in HAWC2. The second, **H2 SE**, is the jacket condensed as a super element coupled with the wind turbine in HAWC2. The third, **HS2**, is the jacket condensed as a super element coupled with the wind turbine in HAWCStab2.



A full aero-elastic stability analysis for the entire operating range of wind speeds can then be performed taking the complex support structure into account.



## Conclusions

The new development of HAWCStab2 enables frequency analysis of complex offshore wind turbines in operation where effects such as aerodynamic damping, gyroscopic forces and centrifugal stiffening of the blades are included in the analysis as opposed to standstill structural analysis, which is often the only option in time simulation codes such as HAWC2.

Future work will investigate the possibilities of coupling super element to nodes other than the tower base in HAWCStab2 and how super elements generated for different loading conditions can be handled.

## References

1. M. H. Hansen, Aeroelastic properties of backward swept blades. 49th AIAA Aerospace Sciences Meeting including the New Horizons Forum and Aerospace Exposition 4 - 7 January 2011, Orlando, Florida
2. T. J. Larsen and A. M. Hansen. How to HAWC2, the users manual. Tech. Rep. Risø-R-1597(ver.4-3)(EN), DTU Wind Energy, Roskilde, Denmark, April 2012.
3. A. M. Hansen, T. J. Larsen, A. Yde. Influence of foundation model complexity on the design loads for offshore WTG on jacket foundation. EWEA Annual Event 2013. Vienna, Austria.
4. J. Jonkman, S. Butterfield, W. Musial, and G. Scott. Definition of a 5-MW reference wind turbine for offshore system development. Technical Report NREL/TP-500-38060, NREL, 2009.
5. Vorpahl, F., Popko, W., and Kaufer, D., 2011, "Description of a basic model of the "UpWind reference jacket" for code comparison in the OC4 project under IEA Wind Annex 30." Tech. rep., Fraunhofer University.