



Traffic Adaptive Base Station Management Scheme for Energy-Aware Mobile Networks

Michail, Sotirios; Checko, Aleksandra; Dittmann, Lars

Publication date:
2014

Document Version
Publisher's PDF, also known as Version of record

[Link back to DTU Orbit](#)

Citation (APA):

Michail, S., Checko, A., & Dittmann, L. (2014). *Traffic Adaptive Base Station Management Scheme for Energy-Aware Mobile Networks*. Poster session presented at 2014 European Conference on Networks and Communications, Bologna, Italy.

General rights

Copyright and moral rights for the publications made accessible in the public portal are retained by the authors and/or other copyright owners and it is a condition of accessing publications that users recognise and abide by the legal requirements associated with these rights.

- Users may download and print one copy of any publication from the public portal for the purpose of private study or research.
- You may not further distribute the material or use it for any profit-making activity or commercial gain
- You may freely distribute the URL identifying the publication in the public portal

If you believe that this document breaches copyright please contact us providing details, and we will remove access to the work immediately and investigate your claim.

Traffic Adaptive Base Station Management Scheme for Energy-Aware Mobile Networks

Sotirios Michail
Master Student
DTU Fotonik

Aleksandra Checko
Industrial PhD Student
MTI Radiocomp, DTU Fotonik

Lars Dittmann
Professor
DTU Fotonik

Background

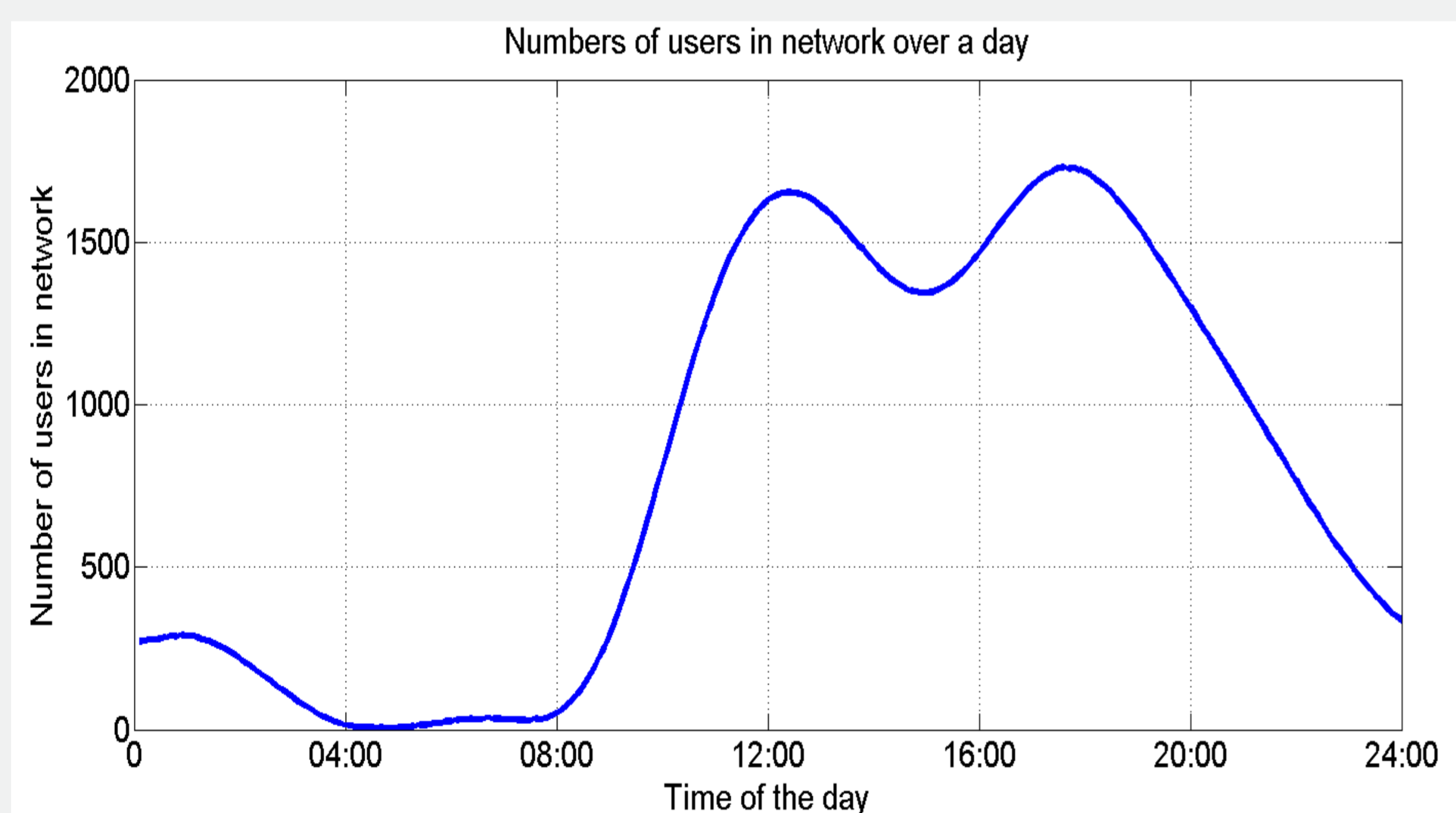
Current situation:

- Increased traffic demand must be supported by network operators.
- This leads in the deployment of multiple base stations (BSs).
- Base stations consume a large amount of energy.
- Increasing the energy consumption, the costs of the operators also increase.
- Networks must be economically feasible.

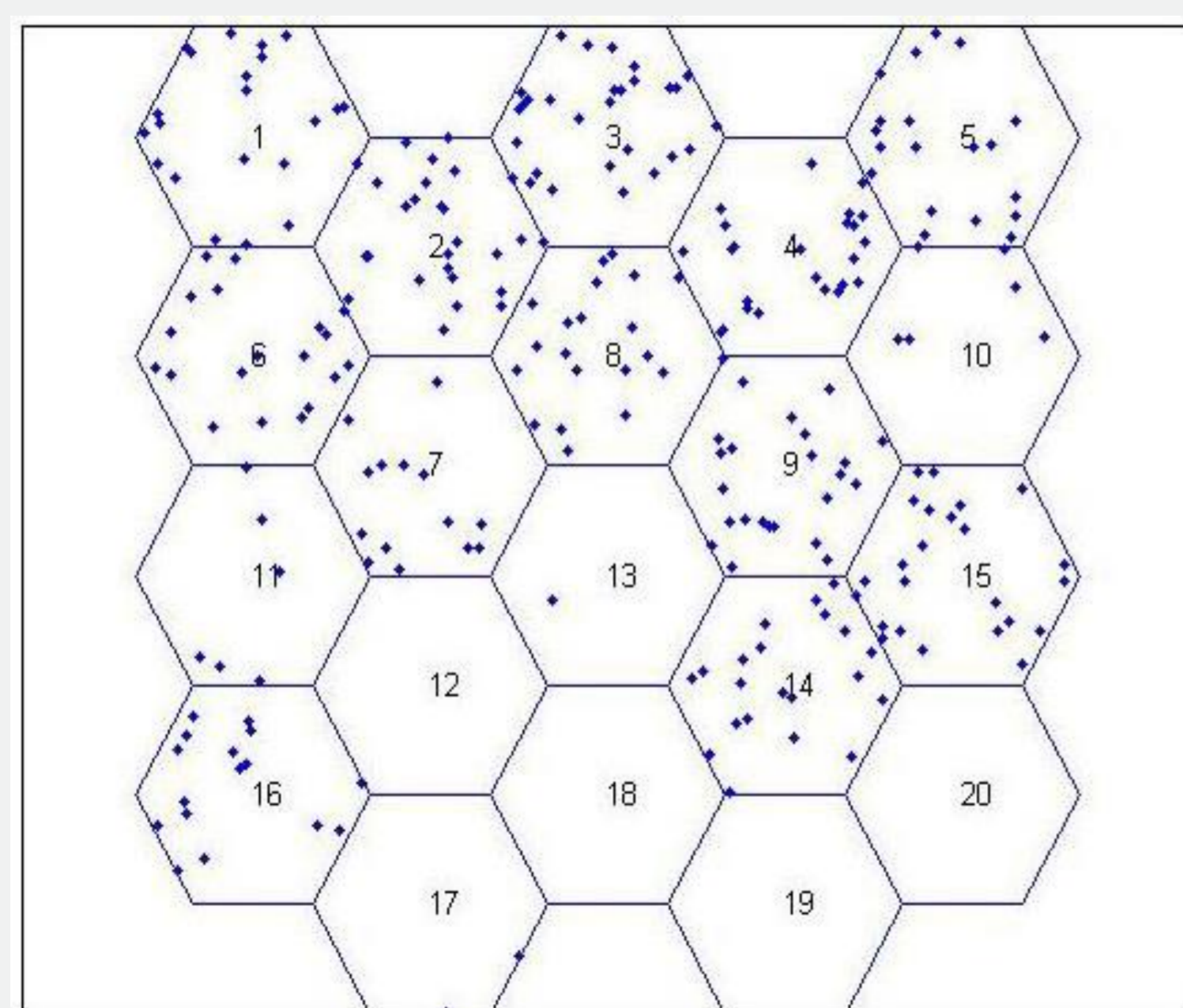
Solution:

- Reduce the energy consumption of the network.
- Focus on the base stations which use large portion of the total consumption.
- Exploit energy savings techniques on base stations switching ON/OFF schemes.
- Propose two algorithms and compare them.
- 3 different scenarios

System Model

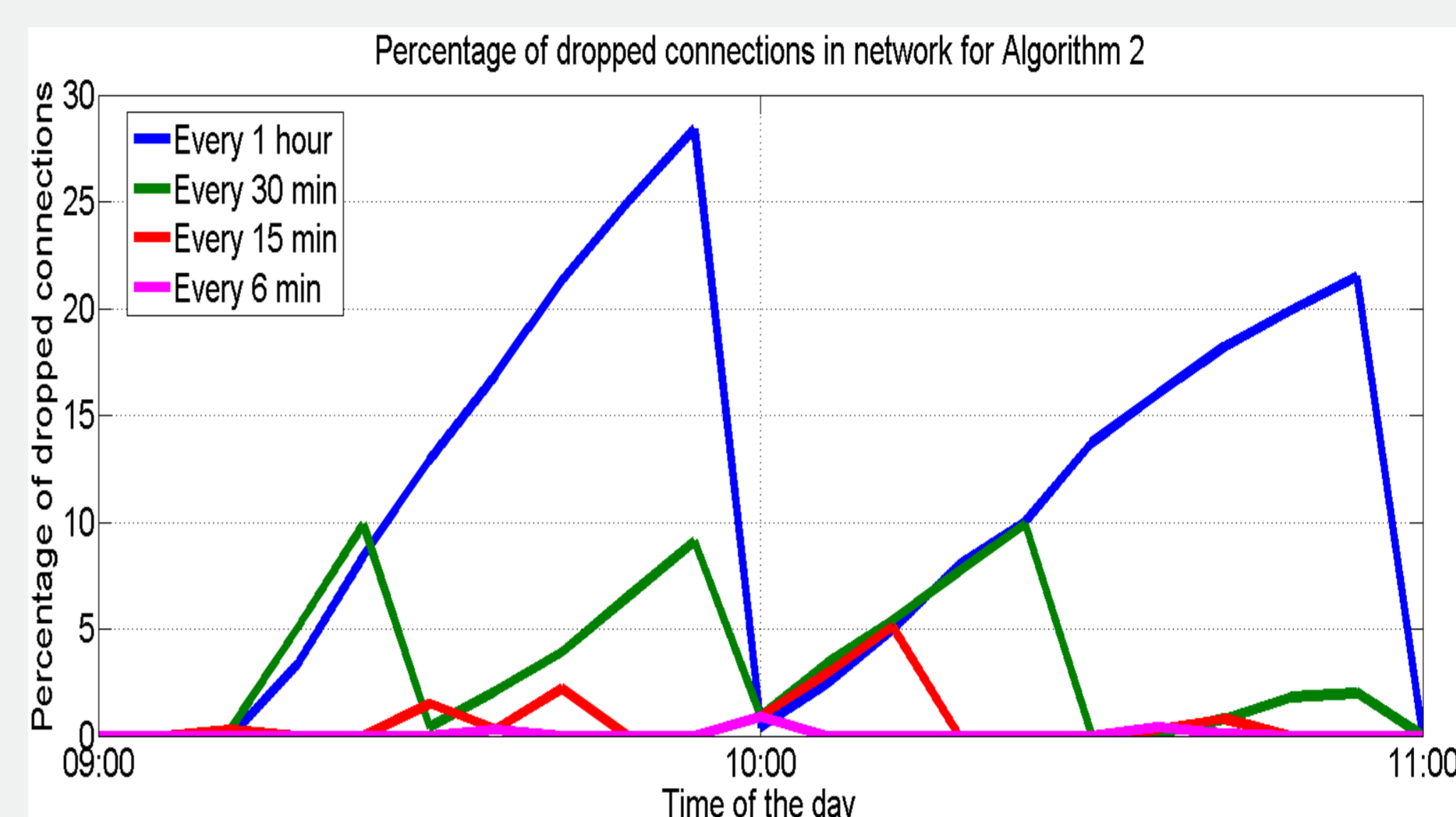


Each of the base stations follows a random traffic pattern. The traffic pattern in each of the base stations follows a sinusoidal distribution in which there is a high and a low bound. The aggregated network traffic from areas of low and high traffic.

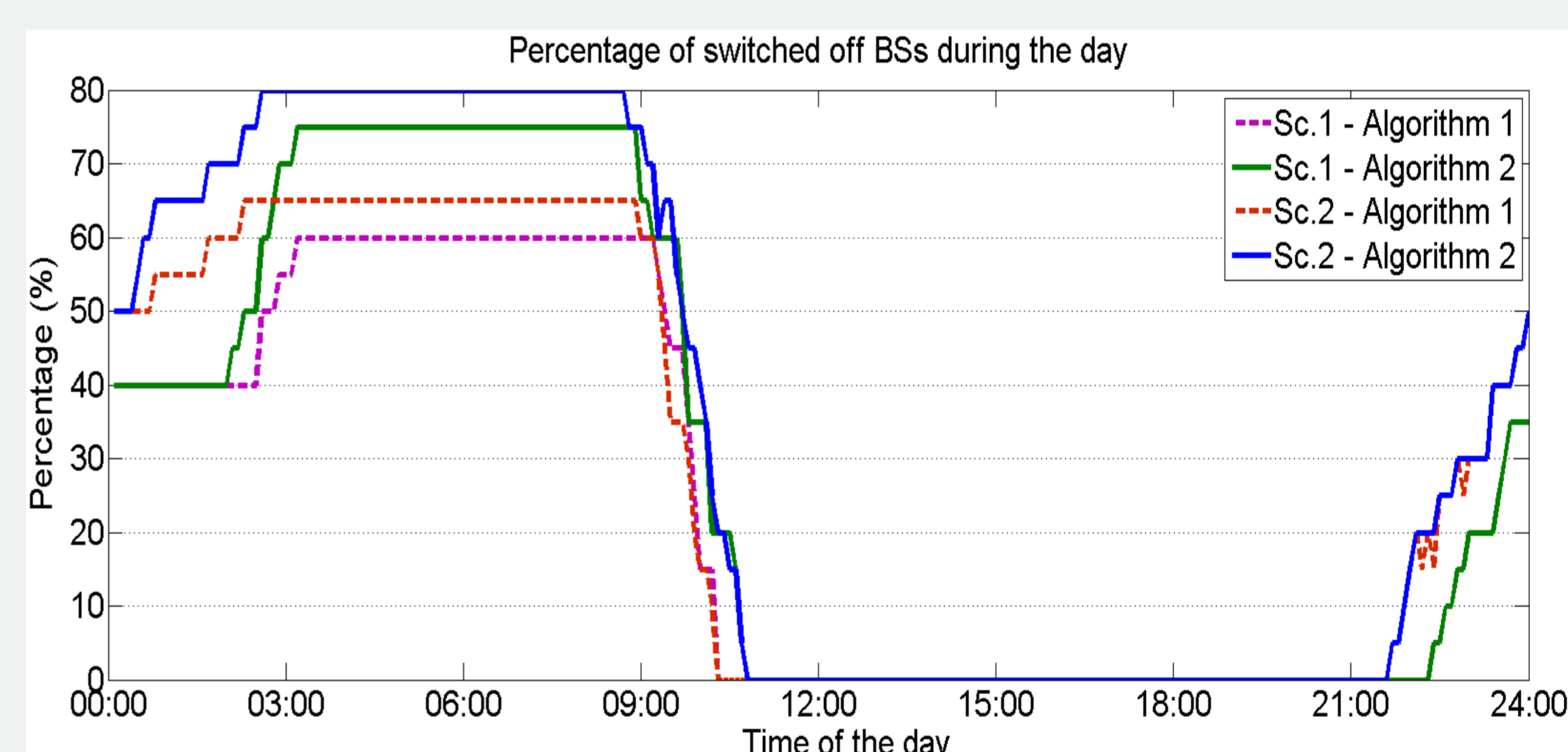


Users are generated in random coordinates inside the cell's area. The number of users in each cell is determined by the traffic pattern of each cell and the maximum users that a cell can serve. Traffic profiles, cell radius and maximum cell capacity are input parameters of the algorithm to represent a scenario of interest.

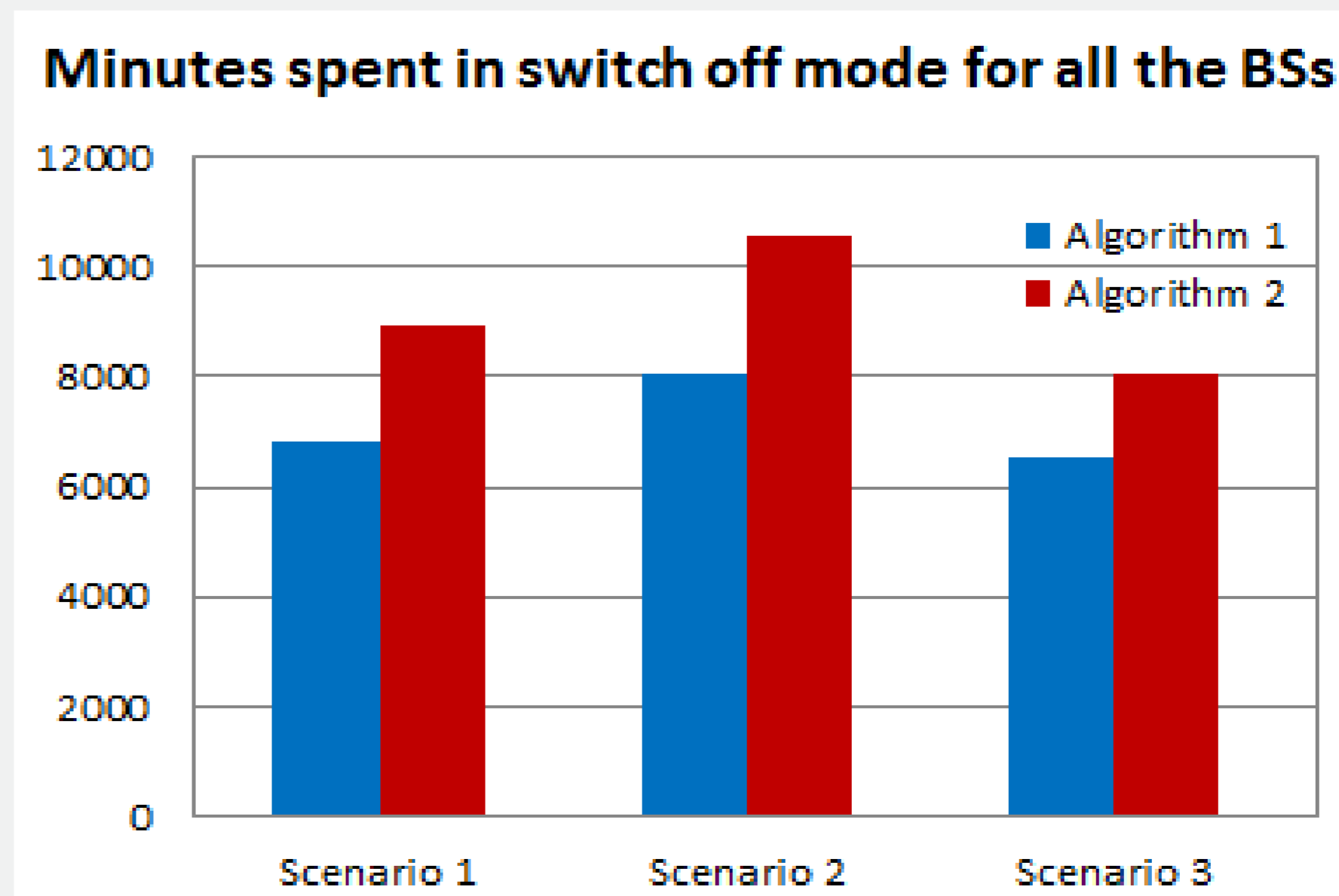
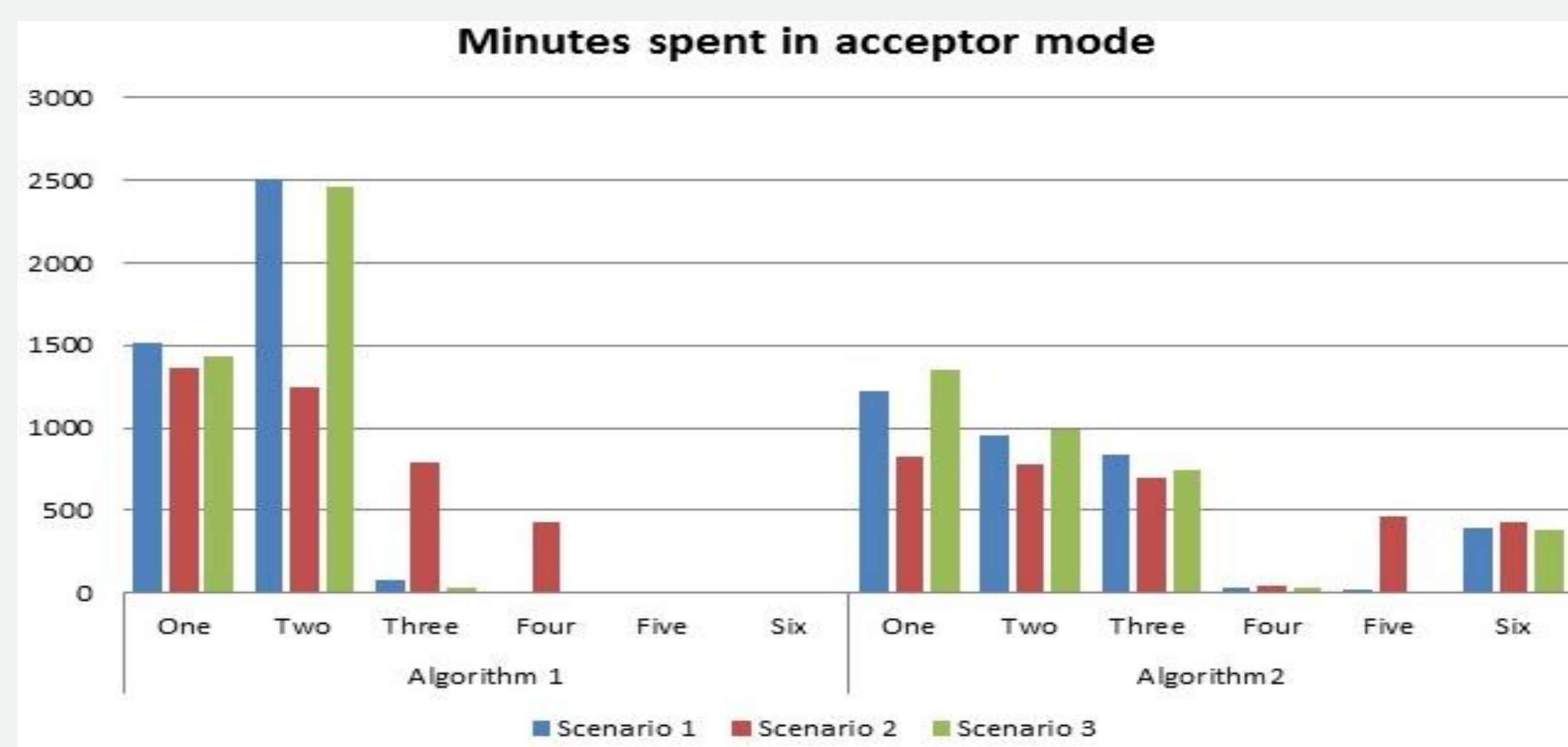
Research results



- Traffic increases drastically during the busy hours (if all the BSs peak at the same time).
- Dropped connections rate must be kept low.
- Dropped connections rate depends on the traffic pattern and the sampling frequency.



Parameter	Values		
	Sc.1	Sc.2	Sc.3
Maximum threshold	80	80	60
Minimum threshold	10	20	10
Sampling Frequency	1 hour, 30 min, 15 min or 6 min		



Each base station will sleep on average for maximum 35% of time during the day