



Power system services provided by inverter connected distributed energy resources

Isleifsson, Fridrik Rafn

Publication date:
2011

[Link back to DTU Orbit](#)

Citation (APA):

Isleifsson, F. R. (Author). (2011). Power system services provided by inverter connected distributed energy resources. Sound/Visual production (digital)

General rights

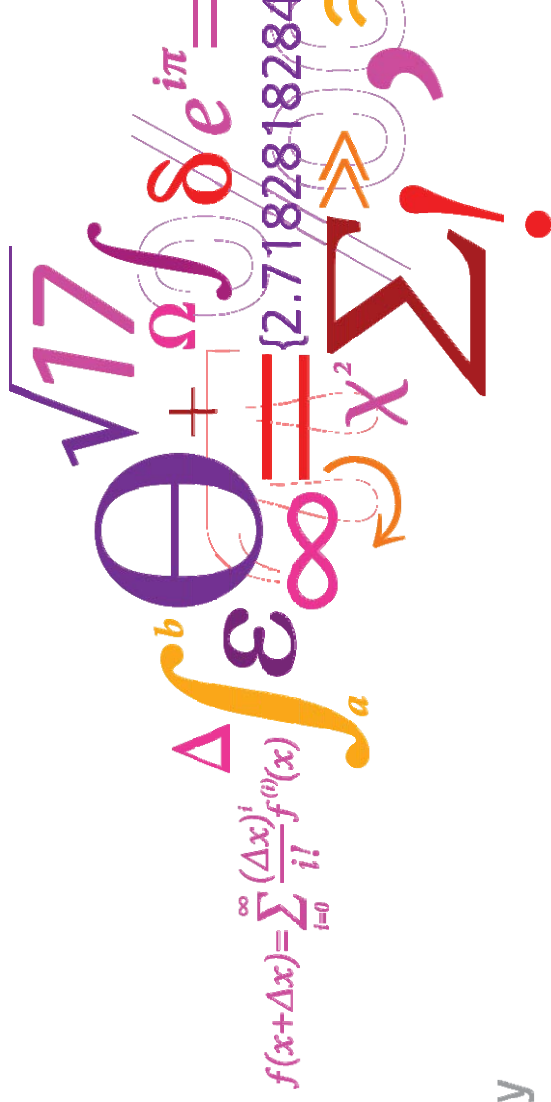
Copyright and moral rights for the publications made accessible in the public portal are retained by the authors and/or other copyright owners and it is a condition of accessing publications that users recognise and abide by the legal requirements associated with these rights.

- Users may download and print one copy of any publication from the public portal for the purpose of private study or research.
- You may not further distribute the material or use it for any profit-making activity or commercial gain
- You may freely distribute the URL identifying the publication in the public portal

If you believe that this document breaches copyright please contact us providing details, and we will remove access to the work immediately and investigate your claim.

Power system services provided by inverter connected distributed energy resources

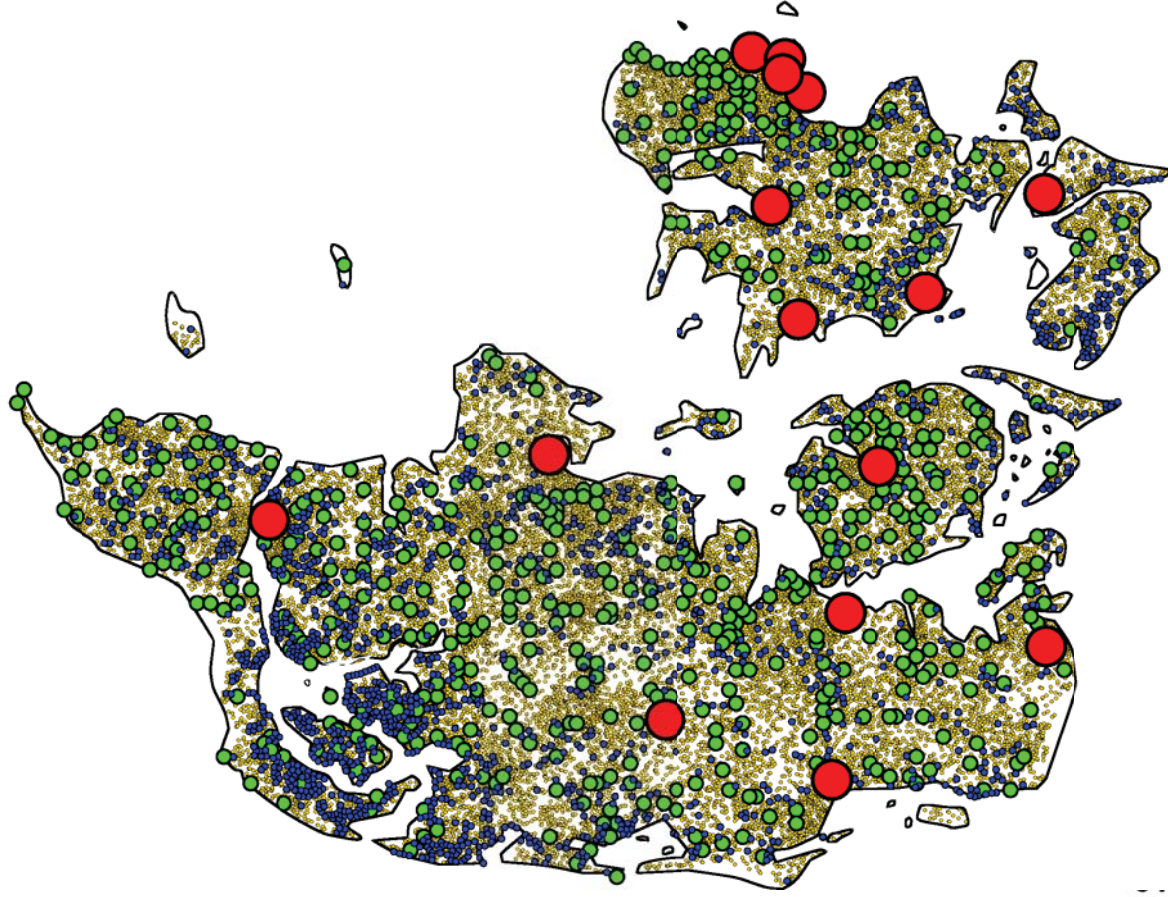
Fridrik Rafn Isleifsson
Risø DTU


$$f(x+\Delta x) = \sum_{i=0}^{\infty} \frac{(\Delta x)^i}{i!} f^{(i)}(x)$$

Introduction

- Electricity production from distributed renewable energy sources is increasing
- This distributed generation is becoming a larger and more significant resource in the power system
- More and more of these units are connected to the system using power inverters
- These inverters offer new opportunities in control and communications
- Inverter connected resources have the potential to enhance and increase power system stability

Distributed Small Energy Resources



Year 2025:

- 15 central power plants
- 500 local CHP plants
- 6.000 wind turbines
(50% of energy)
- 1.000.000 small energy resources
(households, vehicles, industrial consumers)

Small energy resources need to participate in the provision of ancillary services.

Danish grid codes

- Requirements for units smaller than 11 kW
 - External start and stop
 - Over and under voltage protection
 - Over and under frequency protection
 - Rate of change of frequency limits

Inverter capabilities

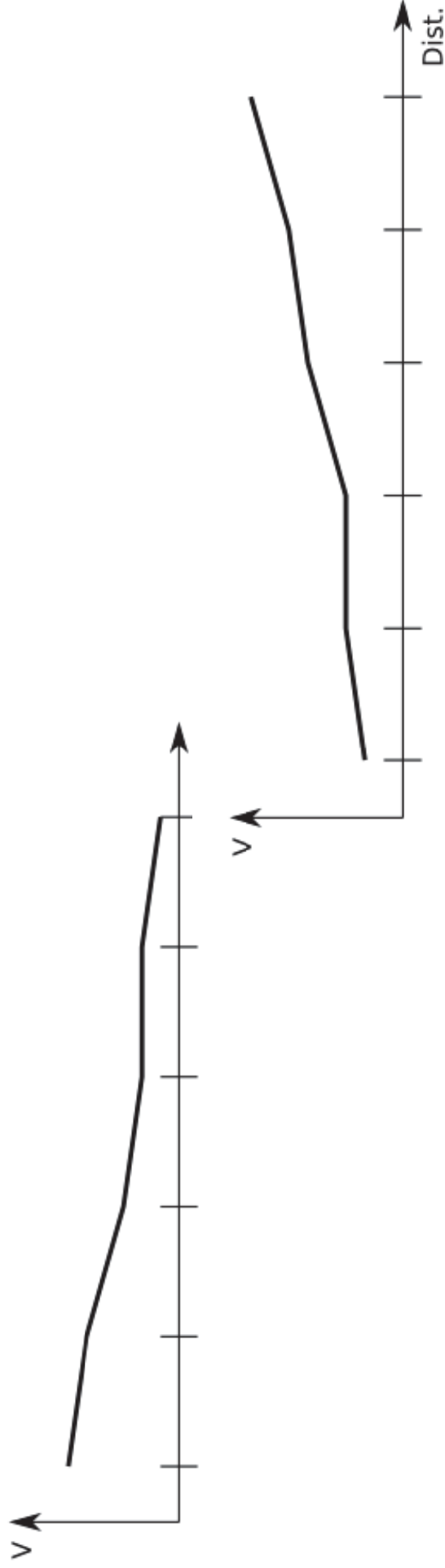
- The latest inverters have reactive power consumption and generation capabilities largely independent of active power generation
- The inverters are usually computer controlled, facilitating communications and fast control
- An aggregate of inverters can significantly contribute to power system control
- To enable aggregation, inverters need to have common functions and communication protocols

Inverter functions

- Connect/Disconnect from Grid
- Power Output Adjustment
- Reactive power Management
- Storage Management (Charging/Discharging)
- Event/History Logging
- Status Reporting/Reading
- Time Adjustment

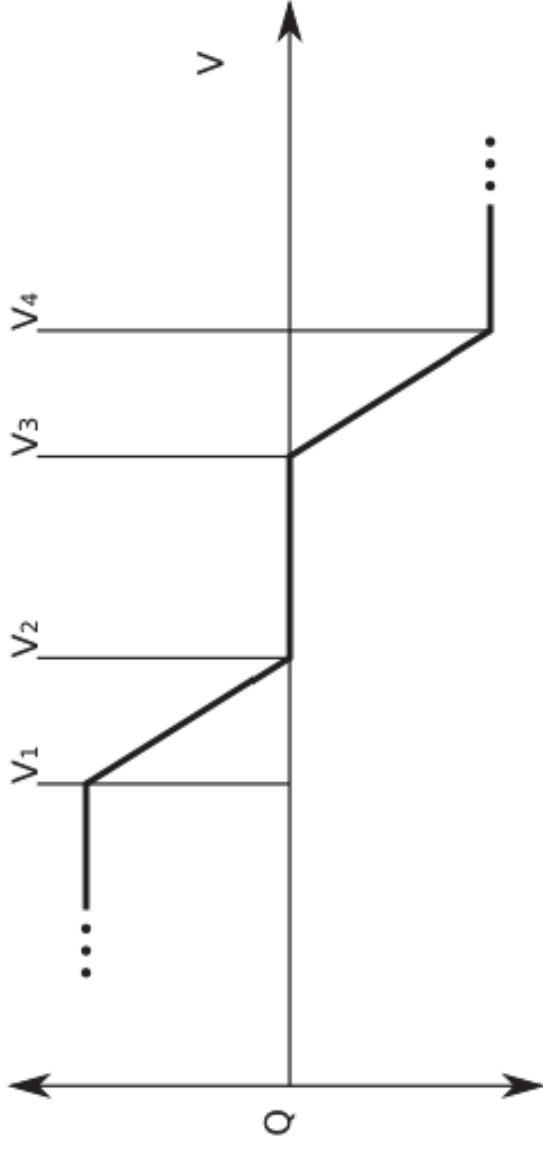
Voltage control in the distribution grid

- Distribution grids face increased loads and production
- Voltage control on the 400 volt level is not automatic and set for predetermined situations
- Cases such as low load and high production in a feeder can cause local voltage problems



Control methods

- Control has to be achieved without frequent communication
- It should be possible to send out control signals without addressing individual units
- It should be possible to achieve a coordinated response from multiple inverters

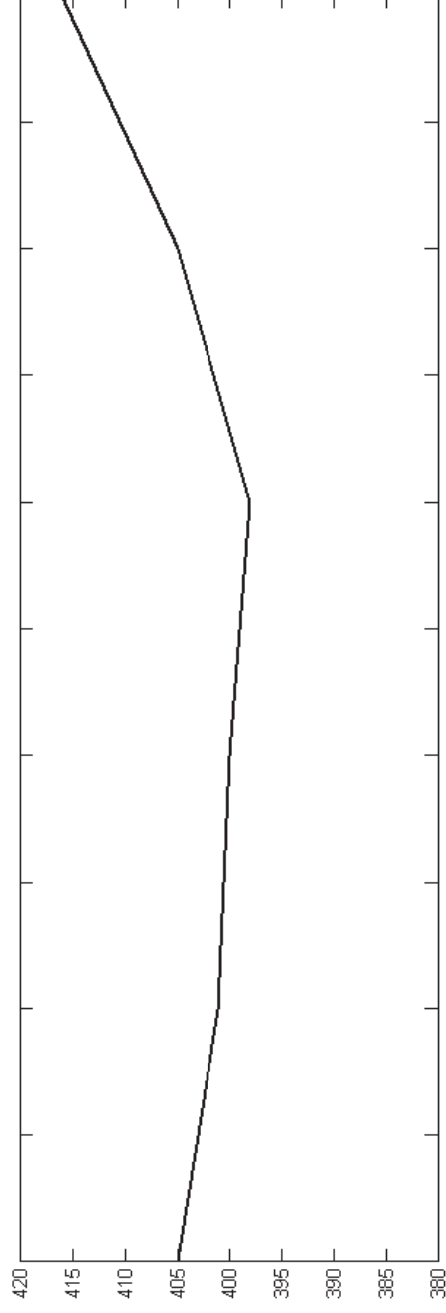


Feedback to system operators

- How can the system operator know how much of the resource is available?
- How can the system operator know which units will respond and have responded?
- Should this information come from bi-directional communication between the inverter or an aggregator and the system operator or are other methods needed?

Results from the DERlab workshop

- A 10 kW PV inverter was tested for voltage support capabilities in different grid setups with 20 kW load distributed along the feeder
- The tests showed that the inverter was able to improve voltage profile along the feeder
- The tests also showed that a relatively small amount of reactive power injection can induce a considerable voltage increase in a loaded feeder



Summary

- Inverters could be a cheap and simple way to provide ancillary services
- Control and feedback require an increased level of communication in the distribution system
- If services from inverter connected units is to be utilized a more advanced grid code is needed
- Methods for estimating and evaluating the response from multiple units are needed