



Integrated Wind Power Planning Tool

Rosgaard, Martin H.; Hahmann, Andrea N.; Nielsen, Torben S.; Madsen, Henrik; Giebel, Gregor; Sørensen, Poul Ejnar

Publication date:
2012

Document Version
Publisher's PDF, also known as Version of record

[Link back to DTU Orbit](#)

Citation (APA):
Rosgaard, M. H., Hahmann, A. N., Nielsen, T. S., Madsen, H., Giebel, G., & Sørensen, P. E. (2012). *Integrated Wind Power Planning Tool*. Poster session presented at EWEC 2012 - European Wind Energy Conference & Exhibition, Copenhagen, Denmark.

General rights

Copyright and moral rights for the publications made accessible in the public portal are retained by the authors and/or other copyright owners and it is a condition of accessing publications that users recognise and abide by the legal requirements associated with these rights.

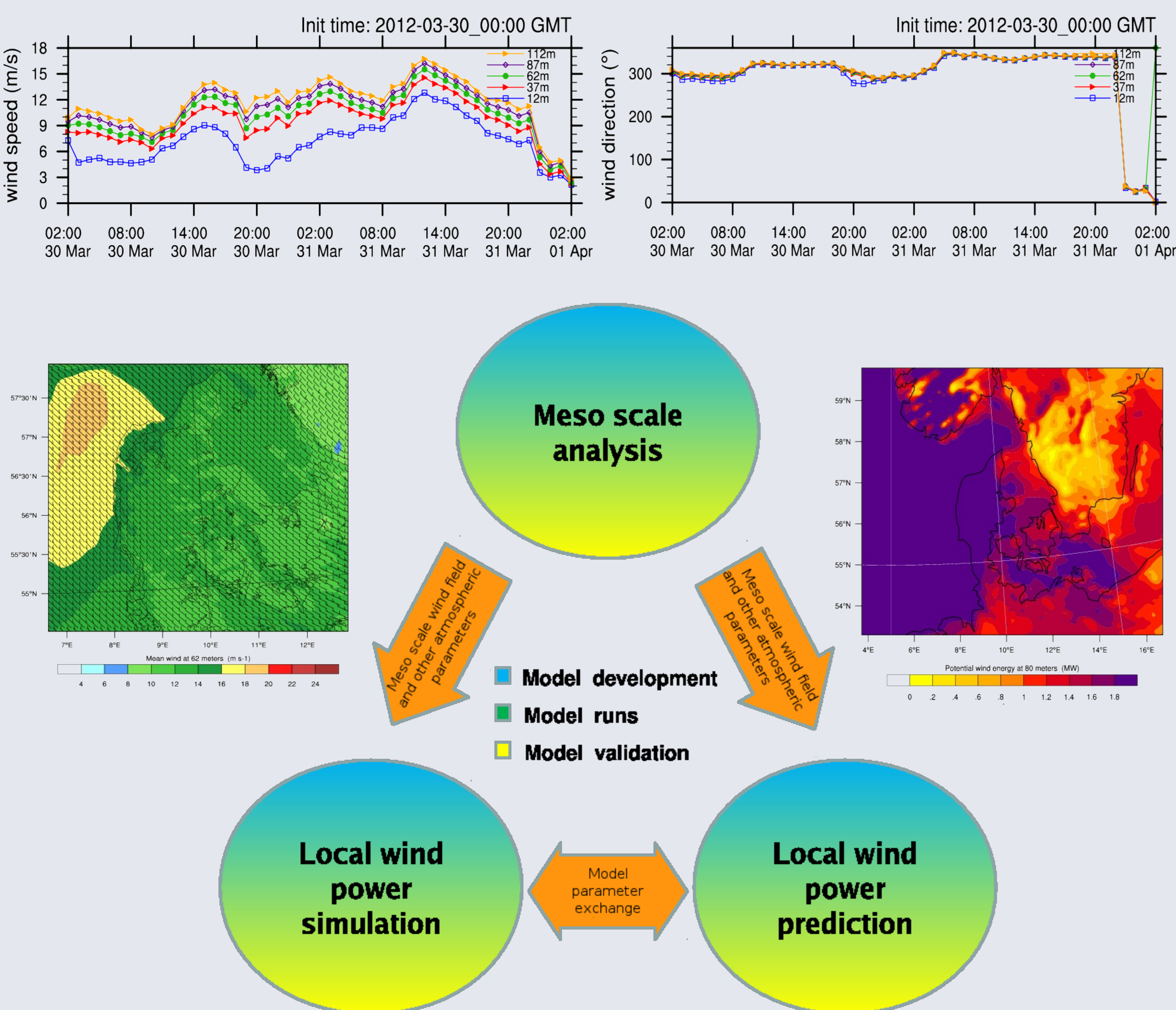
- Users may download and print one copy of any publication from the public portal for the purpose of private study or research.
- You may not further distribute the material or use it for any profit-making activity or commercial gain
- You may freely distribute the URL identifying the publication in the public portal

If you believe that this document breaches copyright please contact us providing details, and we will remove access to the work immediately and investigate your claim.

Abstract

This poster presents the Public Service Obligation (PSO) funded project PSO 10464 "Integrated Wind Power Planning Tool". The project goal is to integrate a Numerical Weather Prediction (NWP) model with statistical tools in order to assess wind power fluctuations, with focus on short term forecasting for existing wind farms, as well as long term power system planning for future wind farms.

Schematic Diagram



Expected Outcomes of PSO 10464

The major aim with PSO 10464 is to develop and improve wind power forecasting models, that allow for the description of:

- The expected variability in wind power production in the coming hours to days,
- variability in wind power production over periods of several years, as well as estimates of future wind farm production,

both depending upon prevailing weather conditions defined by a NWP model.

The high resolution of the WRF results used in the integrated short term prediction model will ensure a high accuracy data basis for use in the decision making process of the Danish transmission system operator and energy authority. The need for correct wind power predictions will only increase over the next decade as Denmark approaches the new goal of 50% wind power based electricity in 2020. In that respect, accurate simulations of the power contribution from future wind farms constitute valuable input to the planning process.

References

- Temporal Changes in Wind as Objects for Evaluating Mesoscale Numerical Weather Prediction
Author(s): Daran L. Rife; Christopher A. Davis; Jason C. Knievel
WEATHER AND FORECASTING Vol.: 24 Issue: 5 Pages: 1374-1389 DOI: 10.1175/2009WAF2222223.1 Published: OCT 2009
- Verification of temporal variations in mesoscale numerical wind forecasts
Author(s): Daran L. Rife; Christopher A. Davis
MONTHLY WEATHER REVIEW Vol.: 133 Issue: 11 Pages: 3368-3381 DOI: 10.1175/MWR3052.1 Published: NOV 2005
- Verification of a high-resolution mesoscale NWP system
Author(s): Claire L. Vincent; William Bourke; Jeffrey D. Kepert; et al.
AUSTRALIAN METEOROLOGICAL MAGAZINE Vol.: 57 Issue: 3 Pages: 213-233 Published: SEP 2008
- Non-parametric Probabilistic Forecasts of Wind Power: Required Properties and Evaluation
Author(s): Pierre Pinson; Henrik Aa. Nielsen; Jan K. Møller; Henrik Madsen; George N. Kariniotakis
WIND ENERGY Vol.: 10 Issue: 6 Pages: 497-516 DOI: 10.1002/we.230 First published: MAY 2007
- Towards the definition of a standardised evaluation protocol for probabilistic wind power forecasts
Author(s): Robin Girard; Pierre Pinson; Jeremie Juban; George Kariniotakis
Deliverable D-1.3, ANEMOS.plus
- Wind farm power fluctuations
Author(s): Poul E. Sørensen.; Jacob Mann; Uwe S. Paulsen; Allan Vesth
Proceedings of the Euromech colloquium. EUROMECH colloquium 464b: Wind energy. International colloquium on fluid mechanics and mechanics of wind energy conversion, Oldenburg (DE), 4-7 Oct 2005. Peinke, J.; Schaumann, P.; Barth, S. (eds.). (Springer, Berlin, 2006) p. 139-145.
- Power Fluctuations From Large Wind Farms
Author(s): Poul Sørensen; Nicolaos A. Cutululis; Antonio Viguera-Rodríguez; Leo E. Jensen; Jesper Hjerrild;
Martin H. Donovan; Henrik Madsen
IEEE TRANSACTIONS ON POWER SYSTEMS Vol.: 22 No. 3 Published: AUG 2007
- Modelling of Power Fluctuations from Large Offshore Wind Farms
Author(s): Poul Sørensen; Nicolaos A. Cutululis; Antonio Viguera-Rodríguez; Henrik Madsen; Pierre Pinson; Leo E. Jensen;
Jesper Hjerrild; Martin Donovan
WIND ENERGY Vol.: 11 Issue: 1 Pages: 29-43 DOI: 10.1002/we.246 Published: JAN-FEB 2008

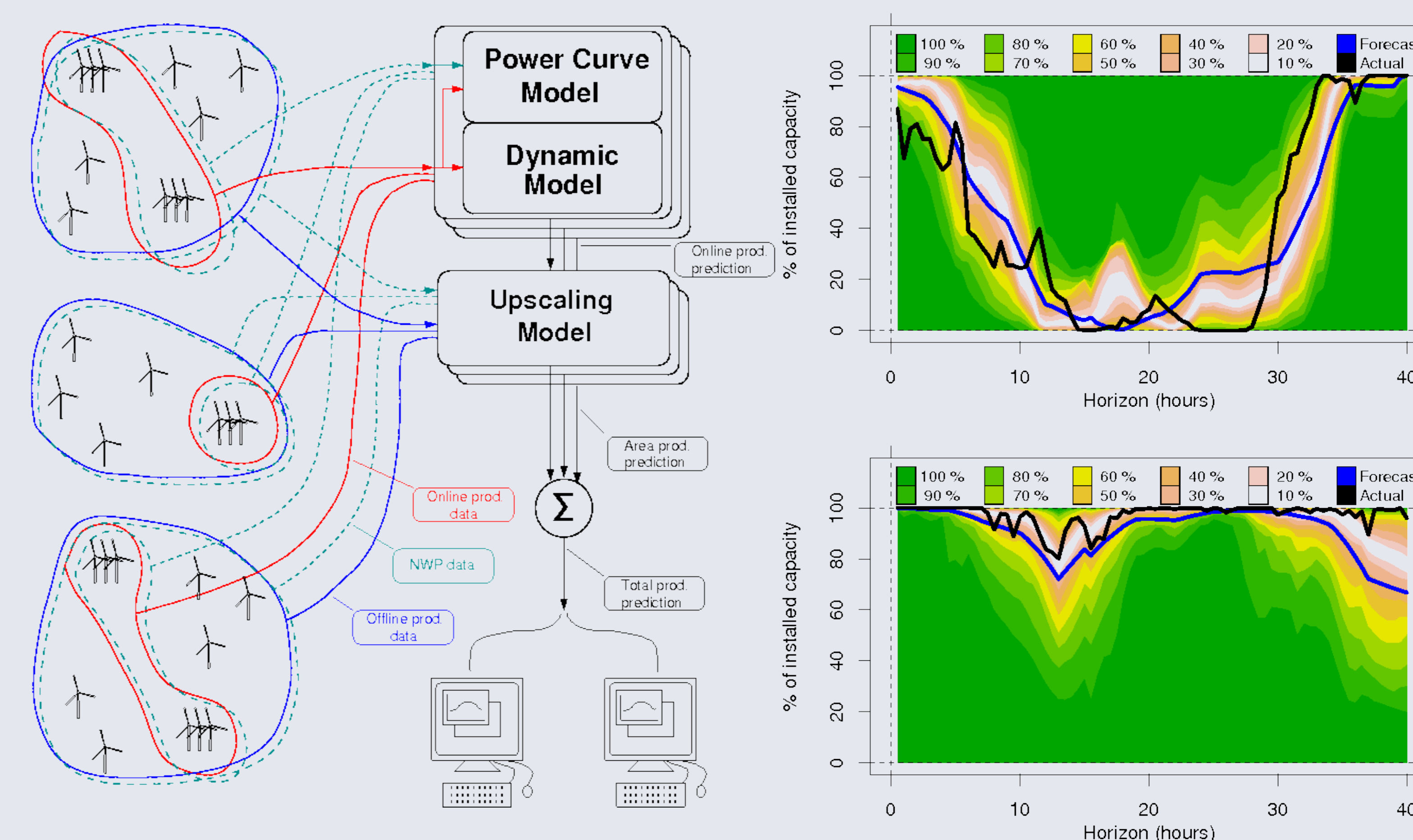
Objectives & Methods

Currently, wind power fluctuation models are either purely statistical or integrated with NWP models with limited resolution. The two objectives outlined below address this issue. For both tasks, the meso scale state-of-the-art Weather Research & Forecasting (WRF) NWP model is used to generate the required input wind fields in the domain of interest.



Short term forecasting: Tools and verification

After validation^{1,2,3}, the WRF output wind fields will be coupled to a widely used wind power prediction model, namely the Wind Power Prediction Tool (WPPT), maintained by ENFOR A/S; a Danish company that specialises in forecasting and optimisation for the energy sector. The output from the integrated prediction tool constitutes scenario forecasts for the coming period, which can then be fed into any type of system model or decision making problem to be solved. The model output will be verified using state-of-the-art probabilistic forecast verification approaches^{4,5}, and also using some new concepts that are appearing in the literature (e.g. the spectral verification works performed at the Technical University of Denmark's DTU Wind Energy department⁶).



Long term planning: Tools and verification

A simulation tool, CorWind 7, has been developed at DTU Wind Energy⁷, intended for long term power system planning. At present, this simulation model runs smoothly with 331 individual wind turbines, representing 6 large offshore wind farms simulated simultaneously. The current global NWP model will be replaced by the meso scale WRF model in order to improve the quality of the input wind fields. The aim is then to run the improved model for a setup including all wind turbines in Denmark simultaneously. The run period includes all years where meso scale data can be made available, but focus will be on using historical wind data from this millennium where most data is available for validation. Also, a 2025 scenario involving 3 GW offshore wind power and repowered wind turbines on land will be simulated. The basis for model validation is power data from the Danish transmission system operator, Energinet.dk, which is expected to be minute's resolution of data at transmission system station level.

Results obtained with the current version are shown below⁸ in the plots of measured and simulated power spectral densities for Nysted (left) and Horns Rev (right) wind farms

