



Application of the measure-correlate-predict approach for wind resource assessment

Nielsen, M.; Landberg, L.; Mortensen, N.G.; Barthelmie, R.J.; Joensen, A.

Published in:
Wind energy for the new millennium. Proceedings

Publication date:
2001

Document Version
Peer reviewed version

[Link back to DTU Orbit](#)

Citation (APA):
Nielsen, M., Landberg, L., Mortensen, N. G., Barthelmie, R. J., & Joensen, A. (2001). Application of the measure-correlate-predict approach for wind resource assessment. In P. Helm, & A. Zervos (Eds.), *Wind energy for the new millennium. Proceedings* (pp. 773-776). WIP - Renewable Energies.

General rights

Copyright and moral rights for the publications made accessible in the public portal are retained by the authors and/or other copyright owners and it is a condition of accessing publications that users recognise and abide by the legal requirements associated with these rights.

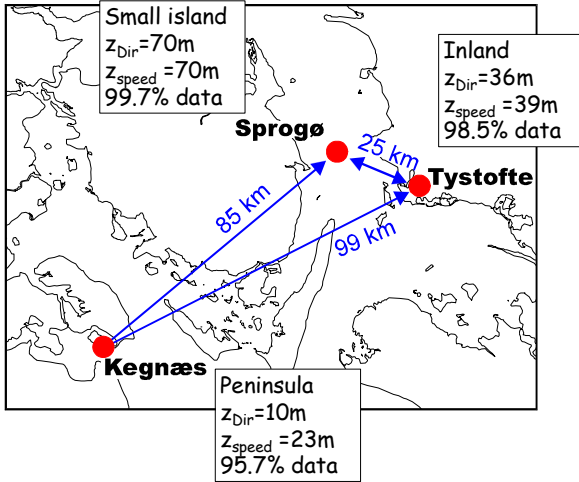
- Users may download and print one copy of any publication from the public portal for the purpose of private study or research.
- You may not further distribute the material or use it for any profit-making activity or commercial gain
- You may freely distribute the URL identifying the publication in the public portal

If you believe that this document breaches copyright please contact us providing details, and we will remove access to the work immediately and investigate your claim.

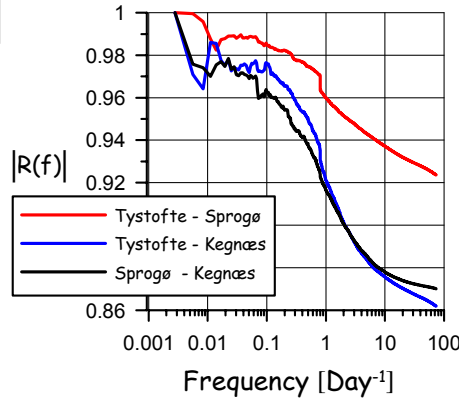
Measure-Correlate-Predict for Wind Resource Assessment

M. Nielsen, L. Landberg, N. G. Mortensen, R. J. Barthelmie & A. Joensen*
Risø National Laboratory and *WaveTech ApS

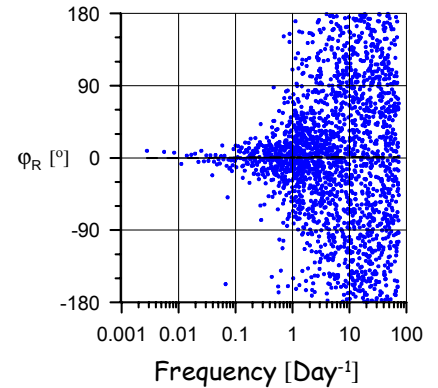
Measurements



The band-limited correlation coefficient depends on the cut-off frequency and spatial separation.



Phases of cross-correlation (Sprogø/Tystofte) are quite scattered at high frequencies!



Correlation

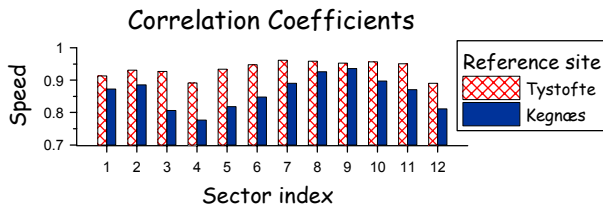
Linear regression models, for speed, direction or wind vector are constructed for each sector at the reference stations.

Speed: $s_p = a_s + b_s s_r$

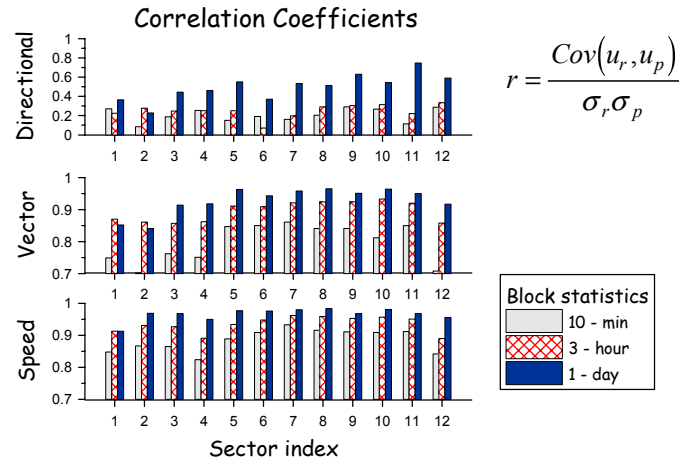
Direction: $\Delta\theta_p = a_\theta + b_\theta \Delta\theta_r$

Vector:
$$\begin{bmatrix} x_p \\ y_p \end{bmatrix} = \begin{bmatrix} a_1 \\ a_2 \end{bmatrix} + \begin{bmatrix} b_{11} & b_{12} \\ b_{21} & b_{22} \end{bmatrix} \begin{bmatrix} x_r \\ y_r \end{bmatrix}$$

Correlations between Sprogø and two reference sites based on 3-hour data are best for the closest station.



The Correlation between Tystofte and Sprogø based on 7-year time series by increasing block length of the input data. Speed is easier to predict than the wind vector and wind-direction predictions are very difficult.



Predictions

The MCP principle is to construct a long time series for the new site by a correlation model and a long record from the reference site.

Predictions for Sprogø based on measurements from Tystofte repeated for various data overlap periods.

