



Life Cycle Assessment of Injection Molding Inserts: Additively Manufactured, in Brass, and in Steel

Mischkot, Michael; Hofstätter, Thomas; Bey, Niki; Lunzer, Andreas

Publication date:
2015

Document Version
Publisher's PDF, also known as Version of record

[Link back to DTU Orbit](#)

Citation (APA):
Mischkot, M., Hofstätter, T., Bey, N., & Lunzer, A. (2015). *Life Cycle Assessment of Injection Molding Inserts: Additively Manufactured, in Brass, and in Steel*. Poster session presented at DTU Sustain Conference 2015, Lyngby, Denmark.

General rights

Copyright and moral rights for the publications made accessible in the public portal are retained by the authors and/or other copyright owners and it is a condition of accessing publications that users recognise and abide by the legal requirements associated with these rights.

- Users may download and print one copy of any publication from the public portal for the purpose of private study or research.
- You may not further distribute the material or use it for any profit-making activity or commercial gain
- You may freely distribute the URL identifying the publication in the public portal

If you believe that this document breaches copyright please contact us providing details, and we will remove access to the work immediately and investigate your claim.

Life Cycle Assessment of Injection Molding Inserts: Additively Manufactured, in Brass, and in Steel

Michael Mischkot^{1*}, Thomas Hofstätter¹, Niki Bey², Andreas Lunzer¹, David Bue Pedersen¹, Hans Nørgaard Hansen¹

1: DTU Mechanical Engineering
2: DTU Management Engineering
* Corresponding author: micmi@mek.dtu.dk

Environmental impact of 3D printing

- Screening life cycle analysis for injection molding (IM) inserts (20 x 20 x 2.6 mm³)
- Digital light processing (DLP) allows for production of injection molding inserts used in low volume production (10 inserts for production of 300 plastic parts)
- Little information is known about the eco-impact of 3D printing materials.
- Brass is a standard material for IM inserts in low-volume and pilot production

Methods

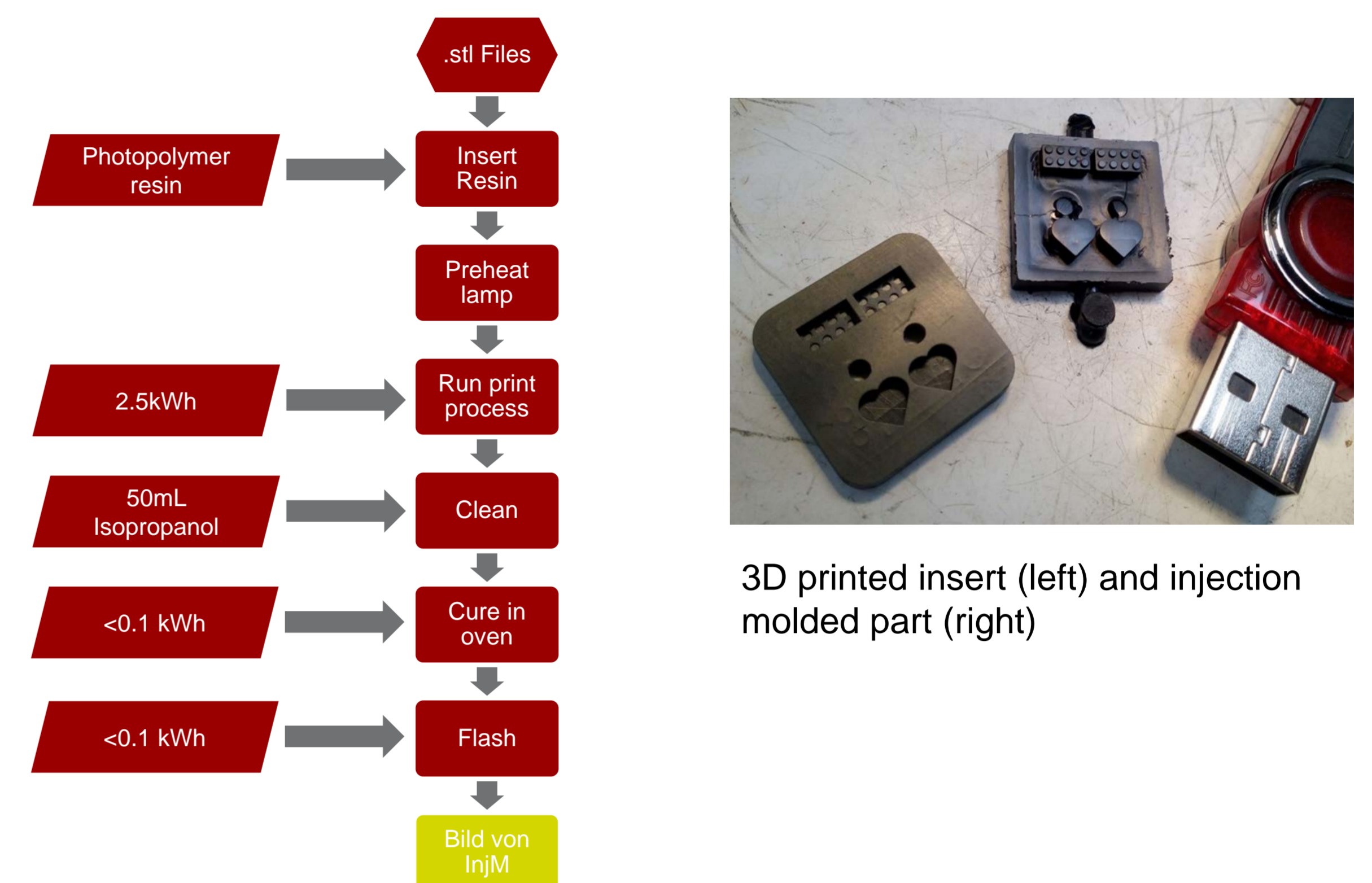
- Screening life cycle analysis in SimaPro LCA software
- 1 brass insert (10,2 g), 10 photopolymer inserts (13 g in total), 1 steel insert (9,4 g)
- Material assessment (3%wt antimony in the photopolymer)

Results

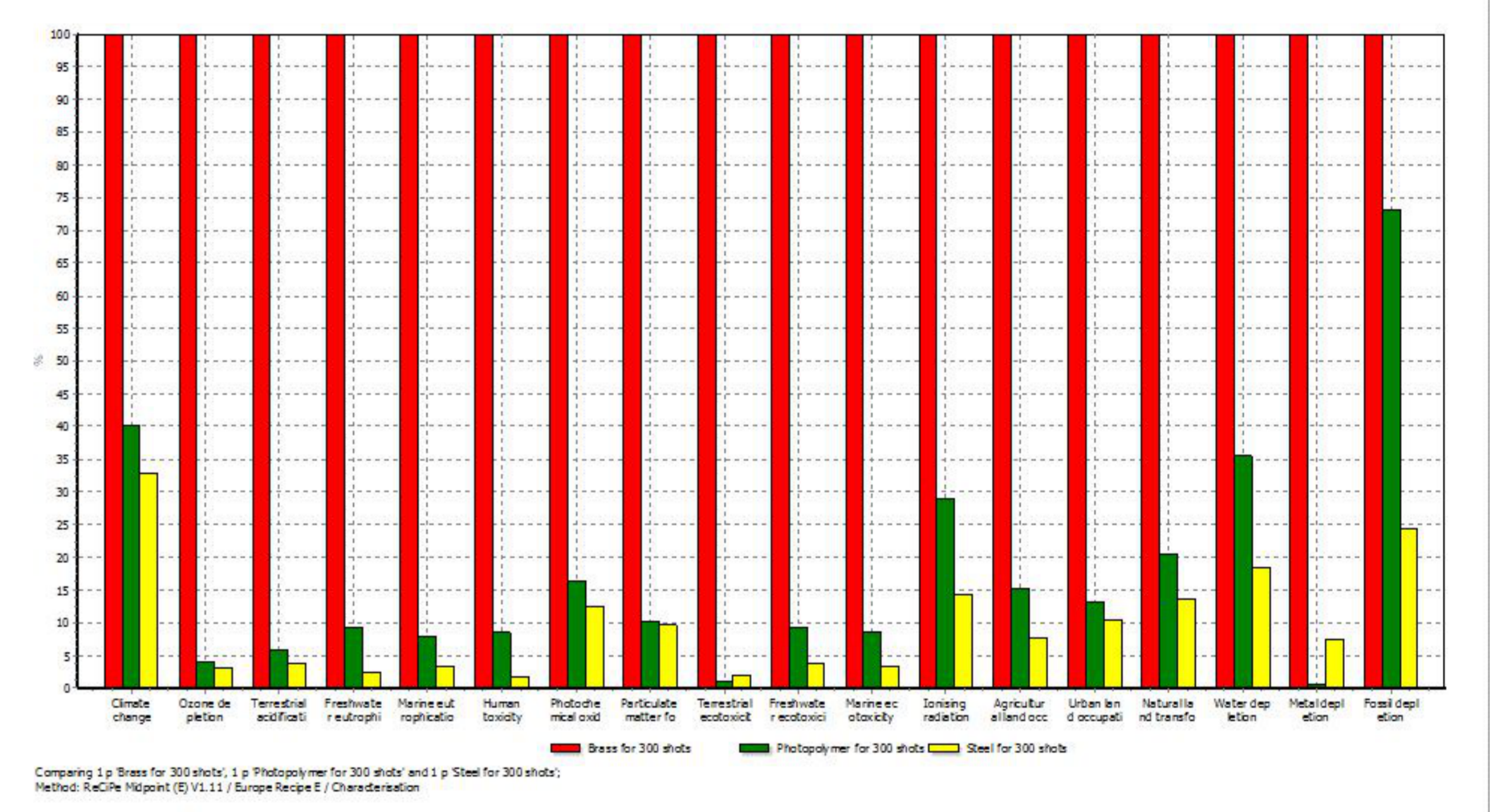
- CO₂ and human toxicity are the key indicators for this eco-assessment.
- 3D printing can significantly improve eco-performance compared to brass.
- Antimony in the photopolymer; exact amount unknown
- More detailed investigations necessary to qualitatively compare 3D printing and steel

Outlook

- Analysis of exact photopolymer composition
- Analysis of the entire process chain
- Inclusion of grey energy and similar
- Better understanding of photopolymer insert life time for more accurate assessment



Process diagram for 3D print process



Approximating Screening Life Cycle Assessment

3D printed inserts can reduce CO₂ by 60% and human toxicity by 92% compared to brass.

	Brass	Photopolymer	Steel
Climate Change in g CO ₂ eq.	101	40.6	33.1
Human Toxicity in kg 1.4-DB eq.	95.5	8.1	1.63