



## Surface-enhanced Raman spectroscopic study of DNA and 6-mercapto-1-hexanol interactions using large area mapping

Frøhling, Kasper Bayer; Alstrøm, Tommy Sonne; Bache, Michael; Schmidt, Michael Stenbæk; Schmidt, Mikkel Nørgaard; Larsen, Jan; Jakobsen, Mogens Havsteen; Boisen, Anja

*Published in:*  
Vibrational Spectroscopy

*Link to article, DOI:*  
[10.1016/j.vibspec.2016.08.005](https://doi.org/10.1016/j.vibspec.2016.08.005)

*Publication date:*  
2016

*Document Version*  
Peer reviewed version

[Link back to DTU Orbit](#)

*Citation (APA):*  
Frøhling, K. B., Alstrøm, T. S., Bache, M., Schmidt, M. S., Schmidt, M. N., Larsen, J., Jakobsen, M. H., & Boisen, A. (2016). Surface-enhanced Raman spectroscopic study of DNA and 6-mercapto-1-hexanol interactions using large area mapping. *Vibrational Spectroscopy*, 86, 331-336.  
<https://doi.org/10.1016/j.vibspec.2016.08.005>

---

### General rights

Copyright and moral rights for the publications made accessible in the public portal are retained by the authors and/or other copyright owners and it is a condition of accessing publications that users recognise and abide by the legal requirements associated with these rights.

- Users may download and print one copy of any publication from the public portal for the purpose of private study or research.
- You may not further distribute the material or use it for any profit-making activity or commercial gain
- You may freely distribute the URL identifying the publication in the public portal

If you believe that this document breaches copyright please contact us providing details, and we will remove access to the work immediately and investigate your claim.

# Surface-enhanced Raman spectroscopic study of DNA and 6-mercapto-1-hexanol interactions using large area mapping

Kasper Bayer Frøhling<sup>a,\*</sup>, Tommy Sonne Alstrøm<sup>b</sup>, Michael Bache<sup>a</sup>, Michael Stenbæk Schmidt<sup>a</sup>, Mikkel Nørgaard Schmidt<sup>b</sup>, Jan Larsen<sup>b</sup>, Mogens Havsteen Jakobsen<sup>a</sup>, Anja Boisen<sup>a</sup>

<sup>a</sup> *Technical University of Denmark, Department of Micro- and Nanotechnology, Ørsteds Plads building 345Ø, 2800 Kgs. Lyngby, Denmark*

<sup>b</sup> *Technical University of Denmark, Department of Applied Mathematics and Computer Science, Richard Petersens Plads building 324, 2800 Kgs. Lyngby, Denmark*

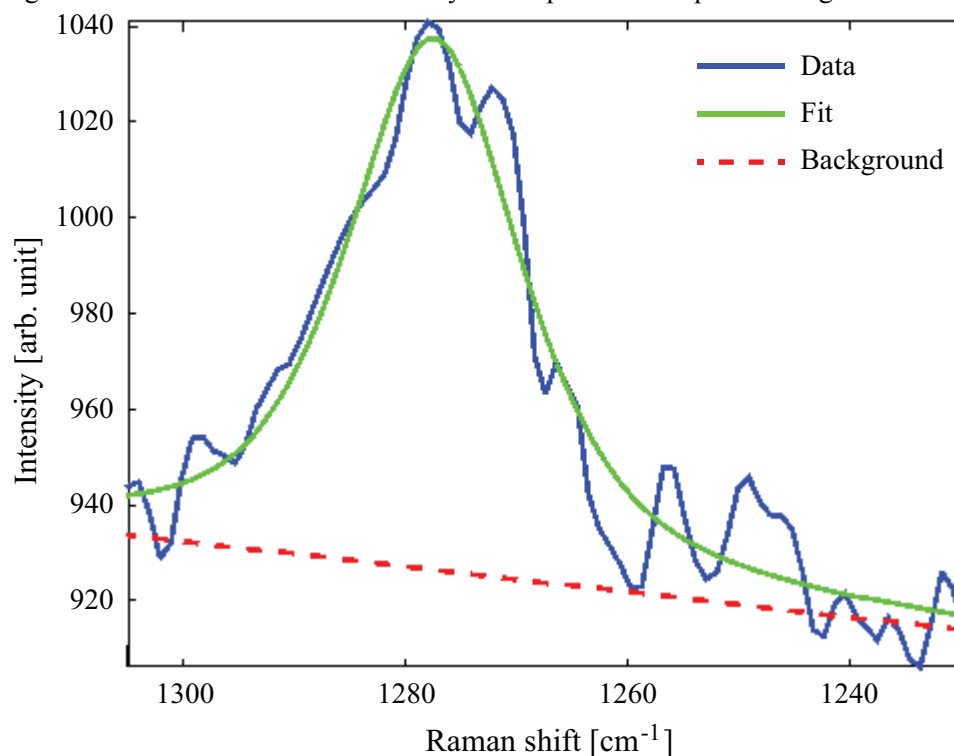
\* Corresponding author. Tel.: +45 45255890, Fax: N/A

E-mail address: [kasper.frohling@gmail.com](mailto:kasper.frohling@gmail.com) (K.B. Frøhling).

## Supplementary information

### S1. Example of fitted peak

Figure S1 shows a fitted peak in a given spectral window. The background was modelled as a straight line as shown in the figure. The model is seen to accurately fit the peak in the spectral range in which it was applied.

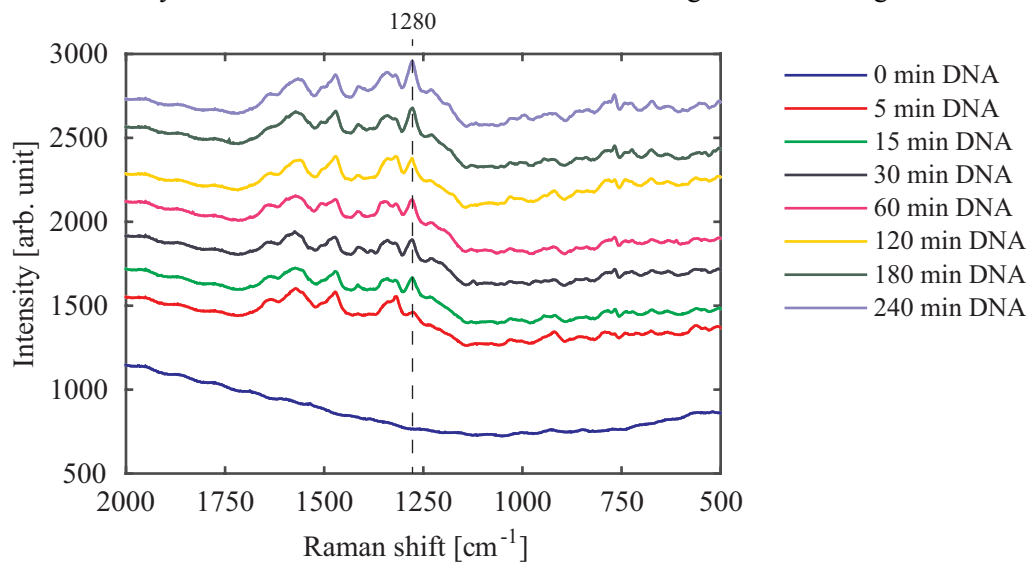


**Figure S1:** Example of a fitted peak using a pseudo-Voigt model and a linear background. The fit is seen to accurately model the data with the spectral noise.

## S2.

### Full range average (n=300) spectra of DNA immobilized on gold nanopillars

Figure S2 shows the average spectra of varying incubation time of DNA on the gold nanopillar surface. No particular Raman activity is observed outside the 1000-1750  $\text{cm}^{-1}$  range showed in Figure 2.

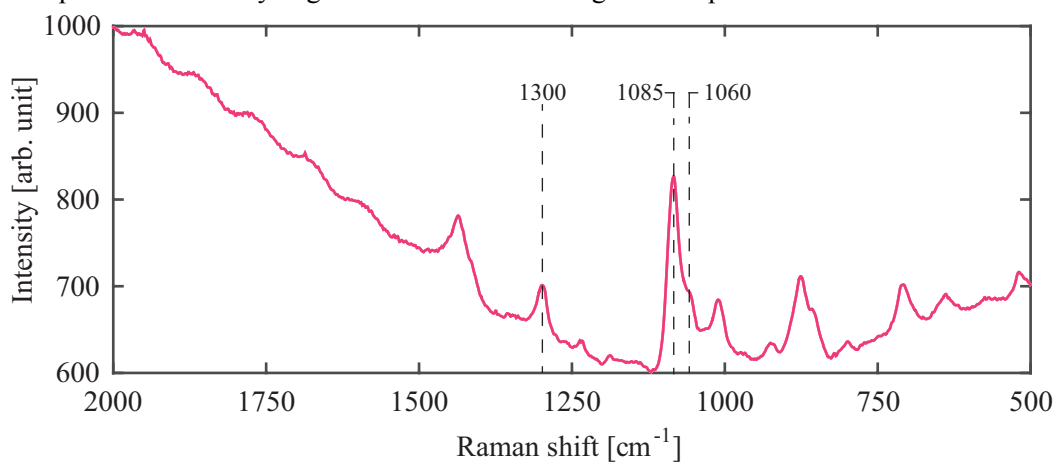


**Figure S2:** Full range average (n=300) spectra of DNA functionalised nanopillars for varying incubation time.

## S3.

### Full range average (n=300) spectra of MCH immobilized on gold nanopillars

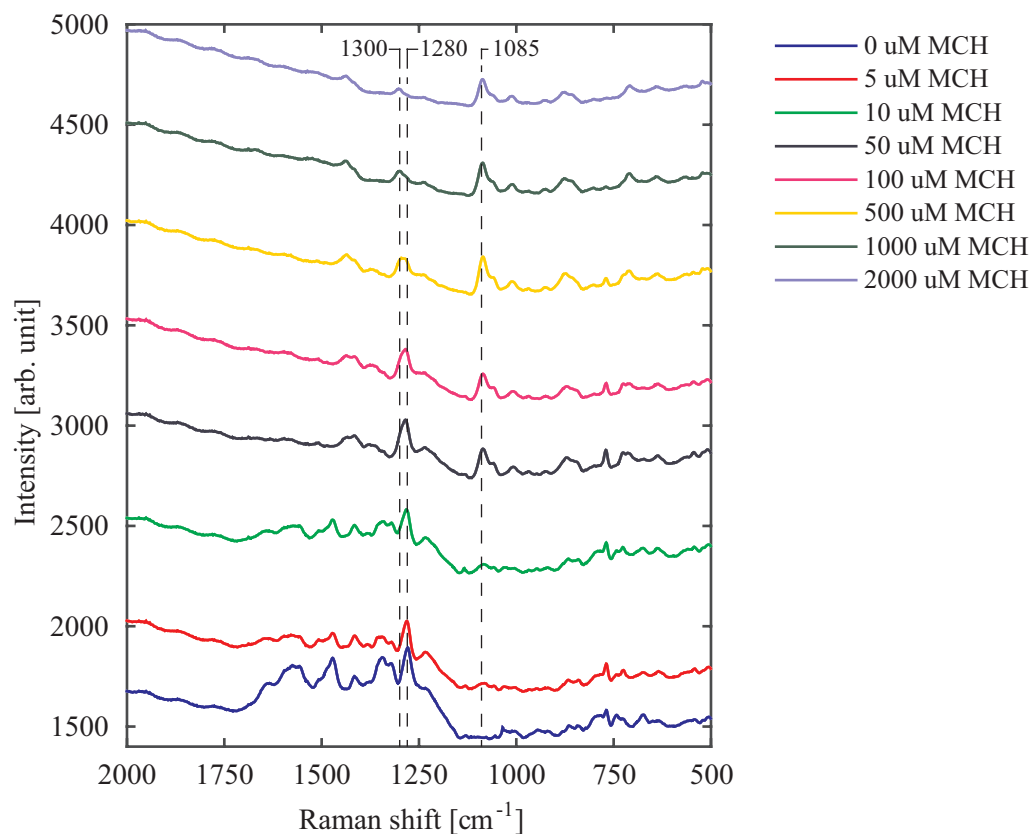
Figure S3 shows the average spectra 2 mM MCH incubated for 1 hour on cleaned nanopillars. A peak at 1300  $\text{cm}^{-1}$  and the characteristic double peak around 1085  $\text{cm}^{-1}$  are clearly seen. This is considered as the “pure MCH” spectra when analysing DNA immobilized on gold nanopillars.



**Figure S3:** Average spectra of 2 mM MCH on cleaned nanopillars. A peak at 1300  $\text{cm}^{-1}$  and the characteristic double peak around 1085  $\text{cm}^{-1}$  are clearly seen.

## S4.

**Full range average (n=300) spectra of varying MCH concentration on gold nanopillars with immobilized DNA**



**Figure S4:** Average spectra of varying MCH concentration on gold nanopillars with immobilized DNA. It should be noted that the characteristic double peak of MCH around 1085 cm<sup>-1</sup> is not observed until 50  $\mu$ M.