



Improving the Gibraltar/Reykjavik NAO index

Vinther, B. M.; Andersen, Katrine Krogh; Hansen, A.W.; Schmith, T.; Jones, P. D.

Published in:
Geophysical Research Letters

Link to article, DOI:
[10.1029/2003GL018220](https://doi.org/10.1029/2003GL018220)

Publication date:
2003

Document Version
Publisher's PDF, also known as Version of record

[Link back to DTU Orbit](#)

Citation (APA):
Vinther, B. M., Andersen, K. K., Hansen, A. W., Schmith, T., & Jones, P. D. (2003). Improving the Gibraltar/Reykjavik NAO index. *Geophysical Research Letters*, 30(23), CLM 8-1 - CLM 8-4.
<https://doi.org/10.1029/2003GL018220>

General rights

Copyright and moral rights for the publications made accessible in the public portal are retained by the authors and/or other copyright owners and it is a condition of accessing publications that users recognise and abide by the legal requirements associated with these rights.

- Users may download and print one copy of any publication from the public portal for the purpose of private study or research.
- You may not further distribute the material or use it for any profit-making activity or commercial gain
- You may freely distribute the URL identifying the publication in the public portal

If you believe that this document breaches copyright please contact us providing details, and we will remove access to the work immediately and investigate your claim.

Improving the Gibraltar/Reykjavik NAO index

B. M. Vinther, K. K. Andersen, and A. W. Hansen

Niels Bohr Institute for Astronomy, Physics and Geophysics, University of Copenhagen, Copenhagen, Denmark

T. Schmith

Danish Meteorological Institute, Copenhagen, Denmark

P. D. Jones

Climatic Research Unit, University of East Anglia, Norwich, UK

Received 21 July 2003; revised 10 October 2003; accepted 28 October 2003; published 12 December 2003.

[1] The longest instrumental index of the North Atlantic Oscillation (NAO) is based on pressure measurements from Gibraltar and Reykjavik. Recently two long pressure series from the town of Cádiz and the nearby San Fernando observatory in southern Spain have been digitized. As Gibraltar is situated within 100 kilometers from Cádiz and San Fernando, a long held suspicion that early pressure data from Gibraltar contains several problems can now be investigated. This leads to the creation of an improved version of the long NAO index in which the period from 1821 to 1856 has been revised. *INDEX TERMS*: 1620 Global Change: Climate dynamics (3309); 3309 Meteorology and Atmospheric Dynamics: Climatology (1620); 9325 Information Related to Geographic Region: Atlantic Ocean; 9335 Information Related to Geographic Region: Europe. *Citation*: Vinther, B. M., K. K. Andersen, A. W. Hansen, T. Schmith, and P. D. Jones, Improving the Gibraltar/Reykjavik NAO index, *Geophys. Res. Lett.*, 30(23), 2222, doi:10.1029/2003GL018220, 2003.

1. Introduction

[2] During the last decade interest in the North Atlantic Oscillation (NAO) has increased markedly as its influence on climate in the North Atlantic region has become more and more evident [Hurrell, 1995, 1996; Hurrell and van Loon, 1997; Hurrell *et al.*, 2003]. The importance of the NAO has also led to a strong desire to extend our knowledge of its behavior further back in time [Jones *et al.*, 2001]. As instrumental pressure data at the centers of action of the NAO (Iceland and the Azores/Iberia) are available for the past ~180 years only [Jones *et al.*, 1997] many efforts have been made to reconstruct the NAO from early instrumental and documentary data [Luterbacher *et al.*, 1999, 2002] as well as various proxy data [Cook, 2003; Vinther *et al.*, 2003].

[3] All NAO reconstructions are characterized by some kind of verification process in which an instrumental NAO index is used for comparison with the proposed NAO reconstruction. For these verification purposes it is of immense importance to have as long and as accurate an instrumentally based index of the NAO as possible.

[4] During the recently concluded IMPROVE project a range of high quality pressure series was generated. Of particular interest for improving the Gibraltar/Reykjavik

NAO index are the new series from Cádiz and San Fernando in southern Spain [Barriendos *et al.*, 2002]. As these two observation sites are located only a few kilometers apart it is possible to create a homogenous pressure series spanning almost two centuries. Furthermore their proximity to Gibraltar gives the opportunity to independently verify the Gibraltar data.

[5] In a recent paper [Jones *et al.*, 2003] such an effort led to the conclusion that the combined Cádiz/San Fernando (CSF) record was inhomogeneous. Here however we postulate that the inhomogeneities in the Cádiz and San Fernando records can be removed and a new homogenized version of the combined CSF pressure record can be created. A comparison between the new CSF and the Gibraltar pressure records is carried out leading to the development of an improved version of the Gibraltar/Reykjavik NAO index for the period 1821 to 1856.

2. The Cádiz and San Fernando Pressure Records

[6] Table 1 provides general information on the Cádiz and San Fernando observatory locations.

2.1. Cádiz Observation Details

[7] 19th century observations in Cádiz can broadly speaking be categorized as follows: Observations carried out by the Urrutia brothers and other observations. During more than 50 years the three Urrutia brothers took three daily observations every day, for every month in every year. No gaps in their impressive observation series except for the years 1851 and 1852 where their notebooks are missing [Barriendos *et al.*, 2002].

[8] A drawback concerning the observations performed by the Urrutia brothers is the complete lack of metadata. Not even the exact location of their instruments is known. Nevertheless their observations seem to be of high quality.

[9] The other 19th century pressure series from Cádiz are short and discontinuous. Hence the recently digitized 1821 to 1869 period of the thrice daily observations carried out by the Urrutia brothers [Barriendos *et al.*, 2002] will be used for creating the combined CSF record.

2.2. San Fernando Observation Details

[10] At the San Fernando Naval Observatory situated nearby Cádiz, systematic hourly pressure observations have been performed for more than a century. Daily mean

Table 1. Early Pressure Series From Stations Located in the Southern Part of the Iberian Peninsula

| Station | Start Year (A.D.) | Latitude (°N) | Longitude (°W) | Source |
|--------------|-------------------|---------------|----------------|--|
| Cádiz | 1816 ^a | 36.5 | 6.2 | <i>Barriendos et al.</i> [2002] |
| Gibraltar | 1821 | 36.2 | 5.4 | <i>Jones et al.</i> [1997]. |
| San Fernando | 1850 | 36.5 | 6.3 | <i>Barriendos et al.</i> [2002] ^b |

^aDiscontinuous observations since 1786 A.D.

^bThe source for the 1850–1869 period is: *Hann* [1887].

pressure has been digitized for the period 1870 to 2000. The data are generally of excellent quality except for the two last decades where some inhomogeneities remain [*Barriendos et al.*, 2002; *Jones et al.*, 2003].

[11] From the period 1850 to 1885 an old tabulation of monthly mean pressure from the San Fernando observatory can be found in *Hann* [1887]. For the 1870–1885 period the tabulation is practically identical to the newly digitized data as both data sets have the same source. The 1850 to 1869 part of the old tabulation has been obtained by *Hann* [1887] from Cecilio Pujazón the director of the San Fernando observatory in the late 19th century. Hence the old tabulation can be expected to be highly reliable.

3. Homogenizing the Pressure Data

3.1. Cádiz Observations

[12] As no metadata are available for the Cádiz pressure observations the only way of assessing the homogeneity of the series is by studying the data themselves. A comparison between the Cádiz and the San Fernando mean monthly pressure data yields two results. First, corrections to the San Fernando data applied by *Hann* [1887] are not consistent with the Cádiz series (the corrections were based partly on suspect Lisbon pressure data). Removing the corrections from the San Fernando series improves monthly correlations between the two pressure series markedly (see Table 2). Second, having removed the Hann corrections from the San Fernando data a yearly cycle in the mean monthly pressure differences between Cádiz and San Fernando is revealed (see Figure 1). Cádiz data shows systematic deviations from the San Fernando values with higher values measured in Cádiz during summer months and lower values during winter months as compared to San Fernando.

[13] It is well known that a wide range of factors can contribute to inhomogeneities in pressure series [*Schmith et al.*, 1997]. Nevertheless an inhomogeneity which varies with an annual cycle with an amplitude of ~ 1 hPa strongly suggests a lack of correction for barometer temperature in the Cádiz data. As no metadata are available for the Cádiz pressure series the only means of correcting the pressure data is to use the outdoor temperature measurements also performed thrice daily by the Urrutia brothers [*Barriendos et al.*, 2002]. Hence

Table 2. Monthly Correlations Between Cádiz and San Fernando Pressure Observations Before and After Corrections Were Removed From the San Fernando Pressure Series

| | Jan | Feb | Mar | Apr | May | Jun | Jul | Aug | Sep | Oct | Nov | Dec |
|--------|------|------|------|------|------|------|------|------|------|------|------|------|
| Before | 0.98 | 0.99 | 0.98 | 0.85 | 0.80 | 0.43 | 0.80 | 0.82 | 0.55 | 0.95 | 0.96 | 0.99 |
| After | 0.99 | 0.99 | 0.99 | 0.93 | 0.85 | 0.57 | 0.93 | 0.92 | 0.81 | 0.98 | 0.99 | 1.00 |

Correlations are calculated for the period 1853–1869.

corrections were applied to each of the thrice daily pressure observations using the standard formula:

$$C = -B\alpha t$$

Here C is the correction, B is uncorrected pressure, α is the volume thermal expansion coefficient for the combined mercury-scale system ($\alpha = 1.818 \cdot 10^{-4}/^{\circ}\text{C}$) and t the barometer temperature in Celsius [*Schmith et al.*, 1997].

[14] The mean monthly differences between the temperature corrected Cádiz data and the San Fernando data are shown in Figure 1. It can be seen that the annual cycle in the difference is now completely removed. This strongly supports the validity of the correction. It should however be noted that a constant difference between the two pressure series remains. The complete lack of Cádiz metadata however impedes further clarification on the possible causes of this difference. It is likely to be the result of a barometer index error.

[15] Finally an inhomogeneity of unknown origin between the years 1835 and 1836 was found. This inhomogeneity results in a mean pressure which is lower during 1821–35 as compared to 1836–69.

3.2. San Fernando Observations

[16] As mentioned in the previous section corrections applied by *Hann* [1887] to the early tabulation of San Fernando data were removed. These corrections amounted to 0.3 mmHg (1850–54), 1.2 mmHg (1855) and 0.7 mmHg (1856–67). As the tabulation gave pressures in mmHg the corrections were subtracted before conversion to hPa (conversion factor 1.333 hPa/mmHg).

[17] The newly digitized part of the San Fernando series (1870–2000) contains suspected inhomogeneities in the last two decades as well as the year 1950 which shows abnormally low pressures throughout the year. A further

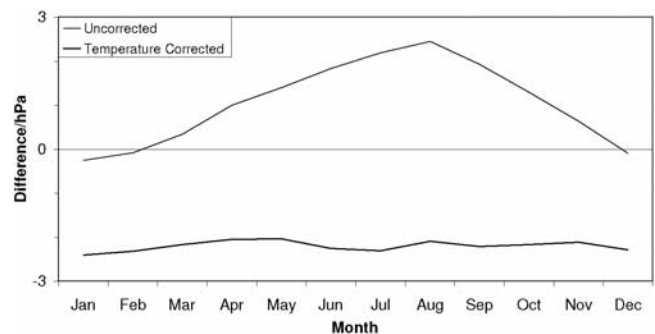
**Figure 1.** Cádiz minus San Fernando mean monthly pressure (1853–1869). Before and after Cádiz pressure observations were corrected for temperature.

Table 3. Corrections Applied to the Mean Monthly Values of the Cádiz and San Fernando Pressure Series

| Period | Observation Station | Correction/hPa |
|---------|---------------------------|----------------|
| 1821–35 | Cádiz (Urrutia Brothers) | 5.4 |
| 1836–50 | Cádiz (Urrutia Brothers) | 3.1 |
| 1851–69 | San Fernando (Naval Obs.) | 0.9 |

discussion of these inhomogeneities is beyond the scope of this paper.

3.3. The Combined Series

[18] To create a single homogenous pressure record from the Cádiz and San Fernando series it is assumed that each homogenous period of observation has the same mean pressure. This assumption has been applied successfully to a large inhomogeneous European pressure database before [Slonosky *et al.*, 1999]. Further, the San Fernando data are chosen when both Cádiz and San Fernando data are available. The choice being a consequence of the better documentation of the San Fernando series. Finally it is required that overlapping homogeneous periods of observations have the same mean pressure in the overlapping years.

[19] Using these assumptions corrections were calculated for the 1821 to 1869 period. The reference period was chosen to be the longest homogenous period (1870–1980, not using the single year of 1950). The corrections are given in Table 3.

[20] It should be noted that Cádiz observations were chosen over the San Fernando observations for the year 1850 as at least the month of January 1850 disagreed markedly with both Cádiz and the nearby Gibraltar (see Table 1) pressure records [Jones *et al.*, 1997].

4. Comparison Between the Gibraltar and the New CSF Pressure Series

[21] To assess the quality of both the Gibraltar and the new CSF pressure record, monthly pressure differences between the two series were calculated for all months during the period 1821 to 1980. Subsequently the standard deviations for the monthly differences were calculated for each year in the period (see Figure 2).

[22] From Figure 2 it can be seen that the standard deviation of the monthly pressure differences (for a single year) are generally around or below 1 hPa in the years after 1856. In 1856 and before however, large excursions in the pressure differences are observed. The deviation peaks in 1829, 1840, 1842 and 1851 coincide exactly with shifts in

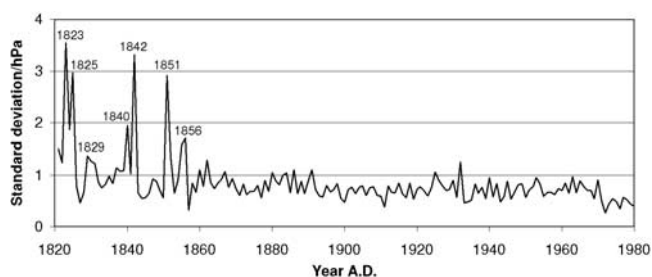


Figure 2. Standard deviations of monthly pressure differences between the Gibraltar and CSF observation series.

Table 4. Correlations With Reykjavik Seasonal Pressure

| Pressure Series | Period | DJF | MAM | JJA | SON |
|--------------------|------------------------|-------|-------|-------|-------|
| Cádiz/San Fernando | 1825–1856 | −0.55 | −0.20 | −0.08 | −0.37 |
| Gibraltar | 1825–1856 | −0.50 | −0.18 | −0.02 | −0.17 |
| Gibraltar | 1857–1999 | −0.68 | −0.34 | +0.16 | −0.29 |
| San Fernando | 1857–1980 ^a | −0.72 | −0.31 | +0.05 | −0.31 |

^aExcept the year 1950.

corrections applied in order to homogenize the Gibraltar pressure record [Jones *et al.*, 1997]. The early peaks in 1823 and 1825 are probably also explained by inhomogeneities in the Gibraltar series as some months are missing in the early part of that record.

[23] The only deviation peak not obviously explained by inhomogeneities in the Gibraltar record is the one corresponding to the years 1855 and 1856. In these years however observations are available from both Cádiz and San Fernando. An analysis similar to the one presented in Figure 2 yields standard pressure deviations between Cádiz and San Fernando of only 0.5 hPa and 0.2 hPa for the two years. Hence the Gibraltar record is most probably to blame for the large deviation peaks in Figure 2.

[24] Finally the agreement between the Gibraltar and the CSF record in the period from 1832 to 1839 suggests that the timing of the shift in corrections (1835/36) applied to the Cádiz record is very reasonable.

5. Improving the NAO Index

[25] The Gibraltar/Reykjavik NAO index is created by normalizing each of the pressure series with respect to the 1951–80 period and subsequently subtracting the Reykjavik normalized pressure from Gibraltar normalized pressure.

[26] As pre-1857 pressure data from CSF have been shown to be more reliable than the data from Gibraltar, the CSF series is now an obvious choice for a southern station in a NAO index. There is however the problem that modern San Fernando data has considerable problems such as changes of stations and instruments [Barriendos *et al.*, 2002]. Therefore the most desirable solution is to change the southern station from Gibraltar to CSF for the 1821–56 period only. This decision relies on the fact that pressure variations are very similar in CSF and Gibraltar. Thus shifting the southern station should not by itself create inhomogeneities in the NAO index.

[27] That the CSF series is indeed more suitable for calculating the NAO in the first half of the 19th century than the Gibraltar series is also suggested by Table 4. CSF pressure correlates slightly higher with Reykjavik than does Gibraltar pressure for their common complete 1825–56 period. The early CSF series is thus more in line with later observed correlations between Reykjavik and Gibraltar as well as Reykjavik and CSF (see Table 4).

[28] Hence a new version of the NAO index using CSF and Reykjavik pressure data for the 1821–56 period was

Table 5. Monthly Pressure Standard Deviations for the Period 1951–80

| Station | Jan | Feb | Mar | Apr | May | Jun | Jul | Aug | Sep | Oct | Nov | Dec |
|------------------|-----|-----|-----|-----|-----|-----|-----|-----|-----|-----|-----|-----|
| Before Gibraltar | 3.2 | 3.5 | 3.4 | 1.9 | 1.4 | 1.0 | 0.8 | 0.9 | 1.1 | 2.1 | 2.3 | 3.0 |
| San Fernando | 3.3 | 3.4 | 3.1 | 1.9 | 1.3 | 0.9 | 0.7 | 0.7 | 0.9 | 2.0 | 2.5 | 3.2 |

All values are given in hPa.

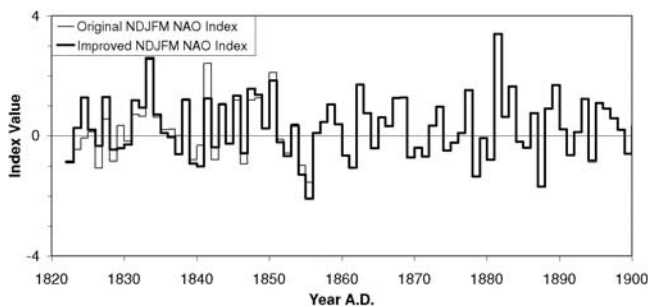


Figure 3. November to March values of the original and the improved NAO index.

calculated. The reference period again being 1951–80 for the normalization. Standard deviations for each month in the reference period are given for both Gibraltar and CSF in Table 5. Note that the similarities of the values confirms the validity of using Gibraltar and CSF pressure variations (almost interchangeably). Nov–Mar values of the new improved NAO index and the original Gibraltar/Reykjavik NAO index are presented in Figure 3.

6. Comparison With NAO Proxies

[29] No alternative NAO index based on pressure observations in the centers of action of the NAO is presently available for the pre-1857 period. Hence further verification of the improved NAO has to be based on comparisons with NAO proxies. This is however problematic because most reconstructions of the NAO are either partly based on the Gibraltar pressure series [Luterbacher *et al.*, 2002], calibrated against the original Gibraltar/Reykjavik NAO index [Cook, 2003] or proven to be unreliable [Cook, 2003].

[30] Only the NAO proxy presented by Vinther *et al.* [2003] is both independent of the Gibraltar data and of sufficient quality for a meaningful comparison to take place. From multiple Greenland ice core records Vinther *et al.* [2003] derived a southern Greenland winter temperature index. As the NAO strongly influences winter temperatures in southern Greenland the temperature index can also be used as a NAO proxy. It should however be noted that the NAO and the Greenland winter temperatures are negatively correlated.

[31] The longest period for which NAO winter (Dec–Mar) data are continuously available for both the original and the improved NAO index is 1824–56. Correlations between the southern Greenland temperature index and the two versions of the NAO index were calculated for this period. Dec–Mar values of the new improved NAO index correlate at $r = -0.52$ with the southern Greenland winter temperature index. The original NAO index correlated at $r = -0.49$. Hence the improved NAO index agrees better with the NAO proxy presented by Vinther *et al.* [2003].

7. Conclusion

[32] Recently digitized pressure observations from Cádiz and San Fernando situated in southern Spain were compared to the Gibraltar pressure record. The comparison shows good agreement between all pressure records except for some of the years between 1821 and 1856. The disagree-

ments during that period were found to coincide with known uncertainties in the Gibraltar record.

[33] The longest instrumental NAO index presently available is based partly on the Gibraltar pressure record. Having demonstrated the deficiencies of the early Gibraltar record the early part of the NAO index was revised. Hence an improved version of the NAO index was created in which Gibraltar data were exchanged with Cádiz and San Fernando observations for the 1821–56 period.

[34] The improved NAO index will provide a better foundation for verifying future NAO reconstructions. A more solid basis for future investigations of NAO influence on 19th century Northern Hemisphere climate is also given by the new version of the NAO index.

[35] **Acknowledgments.** We would first and foremost acknowledge the enormous task of collecting and digitizing the early European pressure data during the IMPROVE project. KKA thanks the Carlsberg foundation for funding. PDJ acknowledges support of the Office of Science (BER), U.S. Dept. of Energy, Grant No. DE-FG02-98ER62601. Finally the two anonymous reviewers are thanked for their helpful comments and suggestions.

References

- Barriendos, M., J. Martín-Vide, J. C. Peña, and R. Rodríguez, Daily meteorological observations in Cádiz-San Fernando. Analysis of the documentary sources and the instrumental data content (1786–1996), *Climatic Change*, 53, 151–170, 2002.
- Cook, E. R., Multi-Proxy Reconstructions of the North Atlantic Oscillation (NAO) Index: A Critical Review and a New Well-Verified Winter NAO Index Reconstruction Back to AD 1400, In North Atlantic Oscillation, Climatic Significance and Environmental Impact, *Geophysical Monograph*, 134, 63–79, 2003.
- Hann, J., Die Vertheilung des Luftdruckes über Mittel- und Süd-Europa, Geographische Abhandlung, Band II, Heft 2, 220 pp., Vienna, 1887.
- Hurrell, J. W., Decadal trends in the North Atlantic Oscillation regional temperatures and precipitation, *Science*, 269, 676–679, 1995.
- Hurrell, J. W., Influence of variations of extratropical wintertime teleconnections on Northern Hemisphere temperatures, *grl*, 23, 665–668, 1996.
- Hurrell, J. W., and H. van Loon, Decadal variations in climate associated with the North Atlantic Oscillation, *Climatic Change*, 36, 301–326, 1997.
- Hurrell, J. W., Y. Kushnir, G. Ottersen, and M. Visbeck, An Overview of the North Atlantic Oscillation, In North Atlantic Oscillation, Climatic Significance and Environmental Impact, *Geophysical Monograph*, 134, 1–35, 2003.
- Jones, P. D., T. Jonsson, and D. Wheeler, Extension to the North Atlantic Oscillation using early instrumental pressure observations from Gibraltar and south-west Iceland, *Int. J. Climatol.*, 17, 1433–1450, 1997.
- Jones, P. D., T. J. Osborn, and K. R. Briffa, The evolution of climate over the last millenium, *Science*, 292, 662–667, 2001.
- Jones, P. D., T. J. Osborn, and K. R. Briffa, Pressure-Based Measures of the North Atlantic Oscillation (NAO): A Comparison and an Assessment of Changes in the Strength of the NAO and in its Influence on Surface Climate Parameters, *Geophysical Monograph*, 134, 51–62, 2003.
- Luterbacher, J., C. Schmutz, D. Gyalistras, E. Xoplaki, and H. Wanner, Reconstruction of Monthly NAO and EU Indices back to AD 1675, *Geophys. Res. Lett.*, 26, 2745–2748, 1999.
- Luterbacher, J., et al., Extending North Atlantic Oscillation reconstructions back to 1500, *Atmospheric Science Letters*, 2002.
- Schmith, T., H. Alexandersson, K. Iden, and H. Tuomenvirta, North Atlantic-European pressure observations 1868–1995 (WASA dataset version 1.0), Danish Meteorological Institute, Technical Report, 97-03, 1997.
- Slonosky, V. C., P. D. Jones, and T. D. Davis, Homogenization techniques for European mean monthly pressure series, *J. Climate*, 27, 2658–2672, 1999.
- Vinther, B. M., S. J. Johnsen, K. K. Andersen, H. B. Clausen, and A. W. Hansen, NAO signal recorded in the stable isotopes of Greenland ice cores, *Geophys. Res. Lett.*, 30(7), 1387, doi:10.1029/2002GL016193, 2003.

B. M. Vinther, K. K. Andersen, and A. W. Hansen, Niels Bohr Institute for Astronomy, Physics and Geophysics, Juliane Maries Vej 30, DK-2100 Copenhagen Oe., Denmark. (bo@gfy.ku.dk)

T. Schmith, Danish Meteorological Institute, Lyngbyvej 100, DK-2100 Copenhagen Oe., Denmark.

P. D. Jones, Climatic Research Unit, University of East Anglia, Norwich NR4 7TJ, UK.