



Pressure Induced Effects During in situ Characterization of Supported Metal Catalysts

Nielsen, Monia R.; Liu, Xi; Wagner, Jakob B.; Damsgaard, Christian D.; Hansen, Thomas W.; Schumann, Max; Jensen, Anker D.; Christensen, Jakob M.

Publication date:
2018

Document Version
Peer reviewed version

[Link back to DTU Orbit](#)

Citation (APA):
Nielsen, M. R., Liu, X., Wagner, J. B., Damsgaard, C. D., Hansen, T. W., Schumann, M., Jensen, A. D., & Christensen, J. M. (2018). *Pressure Induced Effects During in situ Characterization of Supported Metal Catalysts*. Abstract from Microscopy & Microanalysis 2018, Baltimore, Maryland, United States.

General rights

Copyright and moral rights for the publications made accessible in the public portal are retained by the authors and/or other copyright owners and it is a condition of accessing publications that users recognise and abide by the legal requirements associated with these rights.

- Users may download and print one copy of any publication from the public portal for the purpose of private study or research.
- You may not further distribute the material or use it for any profit-making activity or commercial gain
- You may freely distribute the URL identifying the publication in the public portal

If you believe that this document breaches copyright please contact us providing details, and we will remove access to the work immediately and investigate your claim.

Pressure Induced Effects During *in situ* Characterization of Supported Metal Catalysts

Monia R. Nielsen¹, Xi Liu³, Jakob B. Wagner¹, Christian D. Damsgaard^{1,2}, Thomas W. Hansen¹, Max Schumann⁴, Anker D. Jensen⁴ and Jakob M. Christensen⁴

¹Center for Electron Nanoscopy, Technical University of Denmark, DK-2800 Kgs. Lyngby, Denmark

²Department of Physics, Technical University of Denmark, DK-2800 Kgs. Lyngby, Denmark

³SynCat@Beijing, Synfuels China Technology Co., Ltd, Beijing, 101407, China

⁴Department of Chemical and Biochemical Engineering, Technical University of Denmark, DK-2800 Kgs. Lyngby, Denmark

A combination of different *in situ* techniques were used to investigate the activation and deactivation processes of supported metal catalysts such as α -Fe₂O₃ for Fischer-Tropsch synthesis and Rh based catalysts for the synthesis of higher alcohols. The pressure was varied between a few millibars and atmospheric pressure.

Iron-based catalysts are typically used commercially for Fischer-Tropsch synthesis, as they are cheaper than their cobalt and ruthenium-based counterparts [1]. Therefore, looking at their activation process is critical for gaining further insight on the nature of the active sites in order to further enhance their performance. α -Fe₂O₃, used as precursor for Fischer-Tropsch catalysts, is typically activated in either H₂, CO or syngas before synthesis reaction. As CO or syngas activation lead to iron carbides and iron oxides we look at the unsupported α -Fe₂O₃ precursors exposed to hydrogen to gain information about their evolution in time under *in situ* conditions. The activation involve interaction between the precursor, α -Fe₂O₃, and the surrounding gas constituents, in this case hydrogen, which is not only altering the morphology and surface structure but eventually also the catalytic performance.

To better understand the gas-induced shape evolution of the α -Fe₂O₃ precursor, we look at the activation process at different pressures. First, we look at low pressure (a few millibars) using a Cs-corrected FEI Titan 80-300 environmental TEM and a DENSsolution Wildfire S3 MEMS based heating holder, see Figure 1. Under these conditions, the catalyst can be reduced from Fe₂O₃ to Fe₃O₄ and finally to metallic Fe. In order to further understand what happens at higher pressure, a DENSsolution Climate system was used. Here the catalyst can be exposed to the same gas composition at pressures up to 1 bar. While reducing α -Fe₂O₃ to Fe₃O₄ and further to α -Fe, we aim to look into the shape evolution of iron and to demonstrate the difference that occur at different pressures, which is an important result of the influence of pressure in terms of obtaining the real structure-activity correlation for nanoparticles in reaction condition. Furthermore, since the high electron energies and current densities typically used in HRTEM measurements often causes beam induced dynamic processes, we also want to address some of the effects that occur at higher pressures.

In order to further understand pressure effects under *in situ* investigations of supported metal catalysts, strong metal support interactions (SMSI) were investigated on Rh based catalysts for the synthesis of higher alcohols, see Figure 2.

Reference:

[1] X. Liu, *et al*, ACS Catalysis **7** (2017), p. 4867.

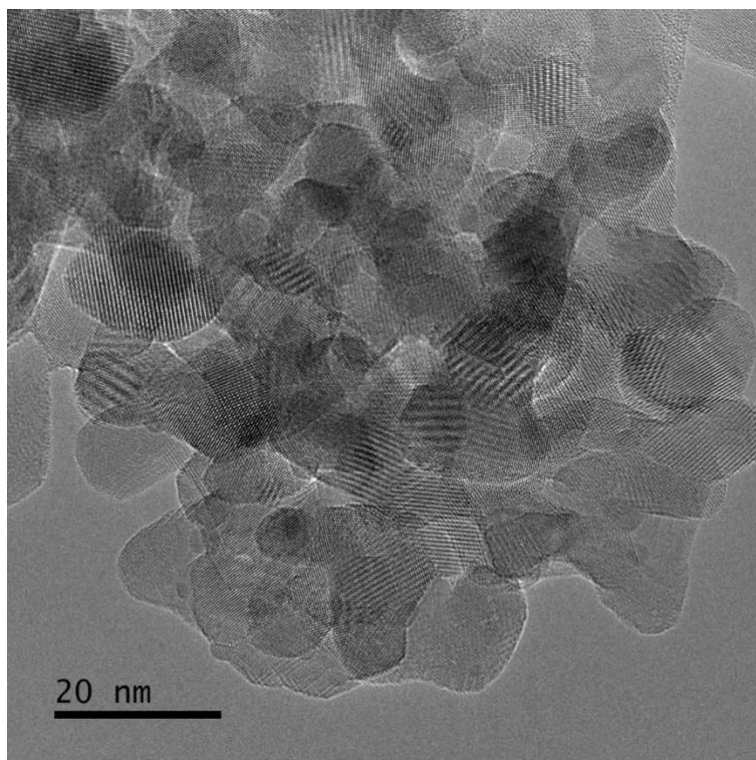


Figure 1. Iron oxide particles showing the general structure, currently in the Fe_2O_3 -state.

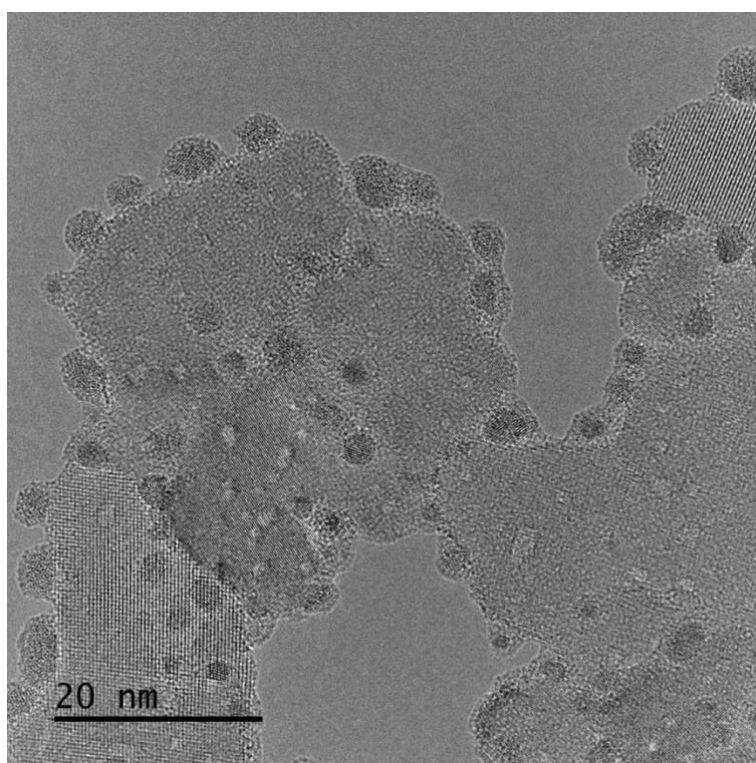


Figure 2. Rh particles on a TiO_2 support illustrating the strong metal support interaction (SMSI).