



## Aeroelastic Analysis of B49 blade-Blatigue Project

**Galinos, Christos; Larsen, Torben J.**

*Publication date:*  
2018

*Document Version*  
Publisher's PDF, also known as Version of record

[Link back to DTU Orbit](#)

*Citation (APA):*  
Galinos, C., & Larsen, T. J. (2018). *Aeroelastic Analysis of B49 blade-Blatigue Project*. DTU Wind Energy I Vol. 638

---

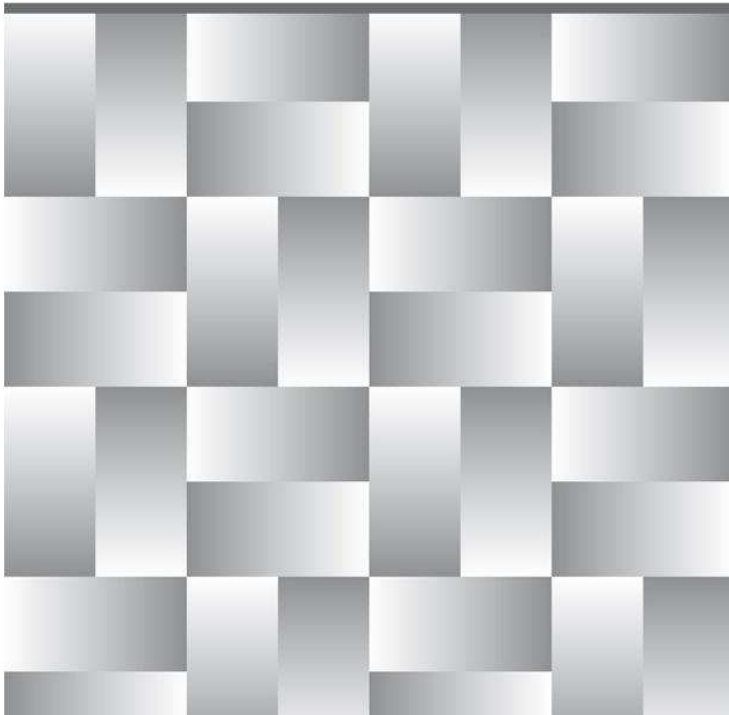
### General rights

Copyright and moral rights for the publications made accessible in the public portal are retained by the authors and/or other copyright owners and it is a condition of accessing publications that users recognise and abide by the legal requirements associated with these rights.

- Users may download and print one copy of any publication from the public portal for the purpose of private study or research.
- You may not further distribute the material or use it for any profit-making activity or commercial gain
- You may freely distribute the URL identifying the publication in the public portal

If you believe that this document breaches copyright please contact us providing details, and we will remove access to the work immediately and investigate your claim.

# Aeroelastic Analysis of B49 blade Blatigue Project



Christos Galinos and Torben J. Larsen

DTU Wind Energy Report I-0638(EN)

September 2018



**Author(s):** Christos Galinos and Torben J. Larsen

**Title:** Aeroelastic analysis of B49 blade, Blatigue Project

**Department:** Wind Energy

**Summary:**

This report is part of the EUDP Blatigue project, Fast and efficient fatigue test of large wind turbine blades. In the study the Siemens B49 blade loads are computed using HAWC2 aeroelastic code. The blade is coupled in a generic wind turbine tower and nacelle structure within HAWC2. Furthermore the basic DTU WE controller is used. The aim is to evaluate the blade fatigue and ultimate loads based on the IEC 61400-1 ed.3 standard. The results are further used in the project for the set-up and testing of the real blade at the DTU Risø Large Scale Facility.

In the first part the model properties are summarized. Then the IEC load cases are simulated using the HAWC2 code and the analysis is focused on the blade performance. A blade load comparison between HAWC2 and the Siemens results is presented together with a summary of the uncertainties related with the present analysis. Finally, an analysis is performed on a potential way to compute the blade lifetime fatigue damage based on few time series instead of running the full design load basis.

The work is funded by the EUDP project BLATIGUE: Fast and efficient fatigue test of large wind turbine blades under project number 64016-0023 which is gratefully acknowledged.

Several contributions have been made in the model set-up as well as in the interpretation of the results from Torben J. Larsen, Anders M. Hansen, Kim Branner, Perer Berring and Federico Belloni who are gratefully acknowledged.

**DTU Wind Energy I-0638(EN)**

**September 2018**

**Contract no.:**

**Group's own reg. no.:**

**Sponsorship:**

EUDP Project BLATIGUE

**Pages: 46**

**Tables: 13**

**Figures: 54**

**References: 8**

Technical University of Denmark

DTU Wind Energy

P.O.Box 49

4000 Roskilde

Denmark

Telephone +45 4677 5085

communication@windenergy.dtu.dk



# Contents

<b>1</b>	<b>Introduction</b>	<b>4</b>
1.1	Wind Turbine Model . . . . .	4
1.2	Component Structural Properties . . . . .	5
1.3	Blade Geometry . . . . .	5
1.4	HAWC2 Simulation Parameters . . . . .	7
<b>2</b>	<b>Eigenvalue Analysis</b>	<b>8</b>
2.1	WT structure natural frequencies and damping . . . . .	8
2.2	Blade natural frequencies and damping . . . . .	8
<b>3</b>	<b>Normal Power Production Simulations</b>	<b>9</b>
<b>4</b>	<b>Blade Section Stresses-Strains</b>	<b>11</b>
<b>5</b>	<b>Blade Lifetime Fatigue Damage</b>	<b>14</b>
<b>6</b>	<b>Ultimate Load Analysis</b>	<b>24</b>
<b>7</b>	<b>Uncertainties in the Load Analysis</b>	<b>28</b>
<b>8</b>	<b>Simplified Fatigue Target approach</b>	<b>29</b>
<b>9</b>	<b>Acknowledgements</b>	<b>31</b>
<b>10</b>	<b>References</b>	<b>32</b>
	<b>Appendices</b>	<b>33</b>
<b>A</b>	<b>WT component structural properties</b>	<b>33</b>
<b>B</b>	<b>DLC 1.2 Blade section - statistics and 1Hz equivalent loads</b>	<b>39</b>
<b>C</b>	<b>Blade lifetime fatigue</b>	<b>45</b>
C.1	Section Moments . . . . .	45
C.2	Section Strains . . . . .	45