



Folate receptor targeting of radiolabeled liposomes reduces intratumoral liposome accumulation in human KB carcinoma xenografts

Christensen, Esben; Henriksen, Jonas R.; Jørgensen, Jesper T.; Amitay, Yasmine; Schmeeda, Hilary; Gabizon, Alberto A.; Kjær, Andreas ; Andresen, Thomas Lars; Hansen, Anders Elias

Published in:
International Journal of Nanomedicine

Link to article, DOI:
[10.2147/IJN.S182579](https://doi.org/10.2147/IJN.S182579)

Publication date:
2018

Document Version
Publisher's PDF, also known as Version of record

[Link back to DTU Orbit](#)

Citation (APA):
Christensen, E., Henriksen, J. R., Jørgensen, J. T., Amitay, Y., Schmeeda, H., Gabizon, A. A., Kjær, A., Andresen, T. L., & Hansen, A. E. (2018). Folate receptor targeting of radiolabeled liposomes reduces intratumoral liposome accumulation in human KB carcinoma xenografts. *International Journal of Nanomedicine*, 13, 7647-7656. <https://doi.org/10.2147/IJN.S182579>

General rights

Copyright and moral rights for the publications made accessible in the public portal are retained by the authors and/or other copyright owners and it is a condition of accessing publications that users recognise and abide by the legal requirements associated with these rights.

- Users may download and print one copy of any publication from the public portal for the purpose of private study or research.
- You may not further distribute the material or use it for any profit-making activity or commercial gain
- You may freely distribute the URL identifying the publication in the public portal

If you believe that this document breaches copyright please contact us providing details, and we will remove access to the work immediately and investigate your claim.

Folate receptor targeting of radiolabeled liposomes reduces intratumoral liposome accumulation in human KB carcinoma xenografts

Esben Christensen¹⁻³

Jonas R Henriksen^{2,4}

Jesper T Jørgensen³

Yasmine Amitay⁵

Hilary Shmeeda⁵

Alberto A Gabizon⁵

Andreas Kjær³

Thomas L Andresen^{1,2}

Anders E Hansen¹⁻³

¹Department of Micro- and Nanotechnology, DTU Nanotech, Technical University of Denmark, DK-2800 Kongens Lyngby, Denmark;

²Center for Nanomedicine and Theranostics, Technical University of Denmark, DK-2800 Kongens Lyngby, Denmark; ³Cluster for Molecular Imaging, Department of Biomedical Sciences and Department of Clinical Physiology, Nuclear Medicine & PET, University of Copenhagen and Rigshospitalet, DK-2200 & DK-2100, Copenhagen, Denmark; ⁴Department of Chemistry, DTU Chemistry, Technical University of Denmark, DK-2800 Kongens Lyngby, Denmark; ⁵Shaare Zedek Medical Center and Hebrew University – School of Medicine, Jerusalem, Israel

Correspondence: Anders E Hansen
Department of Micro- and Nanotechnology, DTU Nanotech, Technical University of Denmark, Anker Engeldunds Vej 1, DK-2800 Kongens Lyngby, Denmark
Tel +45 6083 8079
Email aehan@nanotech.dtu.dk

Background: Active, ligand-mediated, targeting of functionalized liposomes to folate receptors (FRs) overexpressed on cancer cells could potentially improve drug delivery and specificity. Studies on folate-targeting liposomes (FTLs) have, however, yielded varying results and generally fail to display a clear benefit of FR targeting.

Method: Tumor accumulating potential of FTLs and NTLs were investigated in a FR overexpressing xenograft model by positron emission tomography/computed tomography imaging.

Results: Tumors displayed significantly lower activity of FTLs than NTLs. Furthermore, FTLs displayed worse circulating properties and increased liver-accumulation than NTLs.

Conclusion: This study underlines that long-circulating properties of liposomes must be achieved to take advantage of EPR-dependent tumor accumulation which may be lost by functionalization. FR-functionalization negatively affected both tumor accumulation and circulation properties.

Keywords: liposomes, folate, cancer, imaging, PET, EPR

Background

Since the first description of the enhanced penetration and retention (EPR) effect in solid cancers, nano-sized drug delivery systems have been the subject for extensive research following their passive accumulation in malignant tissue.¹ Liposome-based drug delivery systems is the most successful EPR-dependent nano-sized drug delivery systems due to highly flexible and versatile nature of liposomes.² Despite their ability to achieve high level of fat accumulation in the cancerous tissue, liposomal drug delivery systems relying on passive uncontrolled drug release mechanisms have not revolutionized cancer therapy. Based on this, functionalized liposomes, which combine the passive EPR accumulation with selective uptake in cancer cells displaying a specific cell receptor, have been subject for intense research. Several studies and reviews conclude and state that actively targeting liposomes can significantly increase the amount of drug delivered to the target cell in comparison to the free-drug and passively targeting liposomal drug delivery systems.³ Even though these statements have been published extensively, very limited in vivo data support them. In vitro data provide extensive evidence of receptor targeting liposomes being taken up actively by cancer cells expressing the specific surface receptor.⁴⁻⁶ Notwithstanding these observations, we speculate that the tumor microenvironment creates an extensive barrier toward the trafficking and distribution of nano-sized molecules. This barrier may limit the access of active targeting liposomes to a very limited number of cancer cells in solid tumors and

therefore reduce any therapeutic benefit relative to passively targeting liposome. The microregional intratumoral distribution of nano-sized liposomes has been illustrated to primarily be in the extracellular compartment adjacent to functional tumor blood vessels, which indicate that the proportion of cancer cells in direct contact with liposomes may be limited.⁷ This observation is further complicated by the existence of disorganized tumor vasculature and intervascular distance and highly therapy-resistant hypoxic tumor regions.⁸ Active targeting of liposome formulations may additionally make them more prone to recognition by the reticuloendothelial system (RES) thereby altering the circulating properties and reducing liposome availability for tumor accumulation.^{3,9} Despite the theoretical potential of active targeting liposomes the described obstacles may directly hinder the translation of in vitro efficacy to in vivo tumor models.

In the present study, we investigated the biodistribution and tumor-targeting potential of folate-targeting liposomes (FTLs). This was achieved using a highly flexible radiolabeled liposome platform, which was applied for somatostatin receptor targeting liposomes in human neuroendocrine cancer xenografts.¹⁰ Folate receptors (FRs) are highly expressed on a wide spectrum of cancers, including ovarian, lung, brain, head and neck, renal cell, and breast cancers and display relatively low expression on nontumorous tissues with the main exception being inflamed tissue.^{11,12} Importantly, FRs mediate endocytosis to nonlysosomal endosomal vesicles and therefore provides an attractive therapeutic target for intracellular liposomal drug delivery.¹³ The use of radiolabeled nontargeting liposomes (NTLs), radiolabeled FTLs, and functional positron emission tomography (PET) imaging combined with computed tomography (CT) allows for quantification of biodistribution and tumor accumulation levels of both formulations.

Previous studies evaluating the therapeutic potential of FTL drug delivery systems are limited and results are conflicting in regards to therapeutic advantage for intravenously administered formulations.^{4,6,14–16} In comparison, intraperitoneal administration to ascites cancer models have improved the therapeutic efficacy of FTLs in comparison to NTLs. Thus, FTLs have potential, but this may require very directly accessible cancer cells.^{4,17} FTLs has been shown to be selectively taken up in the liver via receptor-mediated endocytosis in hepatic macrophages and display increased blood clearance relative to NTLs.⁹ Administering folic acid in mice intravenously or intraperitoneally has been shown to reduce hepatic uptake and increase circulating properties of liposomes, folate-targeting imaging agents, and folate-targeting liposomes.^{9,11}

The current study was conducted in two stages; first, the biodistribution of copper-64 radiolabeled FTLs (⁶⁴Cu-FTLs) was compared to copper-64 radiolabeled NTLs (⁶⁴Cu-NTLs) in mice bearing subcutaneous folate expressing KB-cell xenografts, and second, the effect of intravenous excess folic acid or vehicle on tumor uptake and biodistribution was compared for radiolabeled FTLs and NTLs.

Methods

Preparation of ⁶⁴Cu-radiolabeled FTLs and NTLs

Preparation of nontargeted liposomes

NTLs entrapping the high-affinity copper chelator, DOTA, were prepared. Briefly, 50 mg/mL freeze-dried lipid powder (HSPC:Chol:DSPE-PEG2k 56.5:38.2:5.3, Lipoid) was dispersed in a buffer containing 10 mM DOTA, 10 mM HEPES, and 150 mM NaCl (pH 7.4). The lipid suspension was hydrated for 60 minutes at 65°C and subsequently sized to 100 nm using a Lipex thermo barrel extruder (Northern lipids). The nonencapsulated DOTA was removed by tangential flow filtration (Minimate™, Pall Corporation).

Preparation of FTLs

FTLs were prepared by postinsertion of 0.5 mol% DSPE-PEG5k-folate into NTLs containing DOTA. Briefly, 1.7 mL NTLs (9.4 mM lipid) was added to 0.5 mg freeze-dried DSPE-PEG5k-Folate powder, incubated for 20 minutes at 45°C with gentle shaking, then cooled on an ice bath, and checked for precipitates. The folate concentration was determined by UV-vis. Samples were diluted 1:9 in 10% SDS solution and incubated for 30 minutes at 60°C. Absorbance was measured at 282 nm and the folate concentration was determined via the molar extinction coefficient of DSPE-PEG5k-Folate 27,500 M⁻¹cm⁻¹ using the absorbance of NTLs as a reference. The liposome size and zeta potential were verified by DLS (ZetaPALS Brookhaven) and the lipid concentration was determined by ICP-MS (iCAP Q, Thermo Scientific). NTLs were produced having an average size of 110 nm (polydispersity index=0.07) and a zeta potential of -5±1 mV. No change in size or zeta potential was determined for the FTLs upon post insertion of DSPE-PEG5k-Folate.

Remote loading of ⁶⁴CuCl₂ into NTLs and FTLs

A total of 3.3 mM liposomes were added to a vial containing dried ⁶⁴CuCl₂. The liposome sample was incubated for 75 minutes at 65°C using constant stirring and then cooled to room temperature. The ⁶⁴Cu loading efficiency was determined by radio-HPLC and radio-thin-layer chromatography.¹⁸

The activity concentration was set to 60–75 MBq/mL corresponding to 12–15 MBq/animal at the time of injection.

Animal tumor model

KB cells (human nasopharyngeal carcinoma cell line, CCL-17; known for overexpressing FRs^{19,20}) were obtained from the American Type Culture Collection (ATCC, VA, USA). Cells were grown in monolayers in FFRPMI culture medium (modified RPMI without folic acid, vitamin B₁₂, and phenol red) in a humidified atmosphere at 37°C containing 5% CO₂. The media was supplemented with 10% FBS, 2 mM L-glutamine, 1 mM sodium pyruvate, nonessential amino acids, 100 U/mL penicillin, and 100 µg/mL streptomycin.

Six-week-old female, athymic nude mice (NMRI *nu/nu*, Taconic Europe, Borup, Denmark) were allowed to acclimatize for 1 week before subcutaneous inoculation on both flanks with KB cancer cells (1.5×10⁶ cells in 100 µL serum-free media and Matrigel).

Experimental setup

Tumor xenografts were allowed to grow for 10 (study part 1) and 14 days (study part 2) prior to imaging. In study part 1, animals were randomized into two groups to receive either; ⁶⁴Cu-FTLs (n=7) or ⁶⁴Cu-NTLs (n=7). In study part 2, animals were randomized into four groups: group 1, ⁶⁴Cu-FTLs preinjected with folic acid (n=8); group 2, ⁶⁴Cu-FTLs preinjected with vehicle (n=8); group 3, ⁶⁴Cu-NTLs preloaded pre-injected with folic acid (n=5); and group 4, ⁶⁴Cu-NTLs preinjected with vehicle (n=7). All experimental procedures were approved by and conducted under the guidelines of The Danish Animal Experiments Inspectorate.

Imaging procedures

All animals were anesthetized with a sevoflurane gas mixture and anesthetized mice had a tail vein catheter position to ensure strict intravenous injection of all formulations. All mice received 3.3 mM of lipid. Two anesthetized mice were positioned side-by-side, separated by a 6 mm polystyrene block, on a heated platform for PET/CT imaging. PET/CT imaging was performed on a dedicated Inveon® small animal PET/CT system with CT-based PET image attenuation (Siemens Medical Systems, Malvern, PA, USA).

In study part 1, ⁶⁴Cu-labelled FTLs (⁶⁴Cu-FTLs) and ⁶⁴Cu-labelled NTLs (⁶⁴Cu-NTL) were administered as a bolus injection performed simultaneously with the start of a 10-minute dynamic PET acquisition. Three PET/CT sessions were conducted; a 10-minute dynamic acquisition commencing simultaneously with the bolus injection of

liposomes, 5-minute static PET scan 3 hours after injection, and a 15-minute static PET scan 24 hours after injection. Following all PET scans, the imaging platform was moved automatically into the CT-scanner for anatomical imaging. The 10-minute dynamic PET scan was reconstructed into 10×3 seconds, 6×5 seconds, 4×30 seconds, and 7×1 minutes frames. PET scans were reconstructed using a maximum a posteriori (MAP) reconstruction algorithm (pixel size: 0.815×0.815×0.796 mm) and attenuation correction was performed based on the corresponding CT scan.

For study part 2, mice were injected with 100 µg of folic acid (Sigma-Aldrich, St Louis, MO, USA) suspended in 100 µL of isotonic bicarbonate solution or 100 µL of isotonic bicarbonate solution (vehicle) 2 minutes prior to infusing ⁶⁴Cu-FTLs or ⁶⁴Cu-NTLs. Animals were allowed to cage rest until performing PET/CT scans. Scans were performed using the same PET/CT scanner and set up as study part 1.

Dynamic PET imaging was performed on two mice from groups 1, 2, and 4 using a MicroPET® Focus 120 (Siemens Medical Systems, Malvern, PA, USA). Mice were subsequently CT imaged using a MicroCAT-II system (Siemens Medical Systems, Malvern, PA, USA). The PET scan commenced simultaneously with the injection of ⁶⁴Cu-labelled liposomes and dynamic images were collected for 2 hours. Only the static 24-hour PET/CT scans were performed for these mice. The 2-hour dynamic PET scans were reconstructed into 10×3 seconds, 6×5 seconds, 4×30 seconds, 7×1 minutes, and 22×5 minutes frames using a similar MAP reconstruction.

Image analysis

Image analysis was performed using commercially available Inveon software (Siemens Medical Systems, Malvern, PA, USA). Regions of interests (ROIs) were manually constructed based on the coregistered PET/CT images. The following ROIs were constructed: tumors (complete volume delineated), liver (multiple slices taking care to avoid the hilar region), spleen, muscle, and blood. Blood activity was estimated from a constructed volume of interest ROI covering the left ventricular lumen of the heart, except for the dynamically scanned mice from study part 2, where an ROI was placed in the abdominal aorta. ROIs in the left ventricle and abdominal aorta were subsequently segmented to only include the voxels displaying above 80% of maximum activity with the original ROI. Time-activity curves (TACs) were constructed based on the dynamic images.

Statistical analysis

Statistical analysis was performed using Prism 5.0 software (GraphPad Software Inc., La Jolla, San Diego, CA, USA).

Comparison between activity of ^{64}Cu -FTLs and ^{64}Cu -NTLs in study part one was performed using unpaired *t*-test. For intergroup comparison between liposome activities in study part 2, one-way ANOVA with Tukey post hoc multiple comparison analysis was used. Data were tested to follow a normal distribution by Komolgorov-Smirnov test. Results reported mean \pm SEM (unless otherwise stated) and $P < 0.05$ were considered statistically significant.

Results

Tumor uptake of FR-targeted and nontargeted radiolabeled liposomes

Tumor volume was compatible between groups displaying a mean size of $78.4 \pm 7.4 \text{ mm}^3$. The PET ^{64}Cu activity levels were determined as % injected dose per gram of tissue (%ID/g) for the PET scans performed 3 hours and 24 hours postinjection (pi.). No tumor uptake was reported for the initial 10-minute dynamic PET scan. There was no statistical difference between mean and maximum activity between ^{64}Cu -FTLs ($2.6\% \pm 0.3\% \text{ID/g}$ and $5.6\% \pm 0.5\% \text{ID/g}$) and ^{64}Cu -NTLs ($2.5\% \pm 0.2\% \text{ID/g}$ and $5.7\% \pm 0.4\% \text{ID/g}$) at 3 hours pi. (unpaired *t*-test) (Figure 1A). However, ^{64}Cu -FTLs displayed a statistically significant lower tumor-to-liver ratio compared with ^{64}Cu -NTLs ($P = 0.0052$). No difference between mean tumor-to-blood or tumor-to-spleen ratios was observed between groups (Figure 1B).

At the PET scan 24 hours pi., ^{64}Cu -NTLs displayed a statistically significant higher mean ($7.8\% \pm 0.5\% \text{ID/g}$) and maximum ($18.2\% \pm 1.5\% \text{ID/g}$) tumor activity in

comparison to the mean ($5.9\% \pm 0.6\% \text{ID/g}$) and maximum ($13.4\% \pm 1.0\% \text{ID/g}$) tumor activity of ^{64}Cu -FTLs ($P = 0.025$ and $P = 0.011$) (Figure 1A). Mean tumor-to-blood ratio was statistically higher and tumor-to-liver ratio statistically lower for the ^{64}Cu -NTLs compared to ^{64}Cu -FTLs ($P = 0.005$ and $P = 0.001$), whereas tumor-to-spleen ratio was compatible between groups (Figure 1B). This reflects the increased liver uptake and the decreased circulating half-life of ^{64}Cu -FTLs.

Biodistribution and uptake kinetics of FTLs and NTLs

Mean liver activity of ^{64}Cu -FTLs was statistically higher than ^{64}Cu -NTLs 3 hours pi. ($18.2\% \pm 0.5\% \text{ID/g}$ and $11.5\% \pm 0.7\% \text{ID/g}$, respectively, $P < 0.0001$) and at 24 hours pi. ($24.4\% \pm 1.2\% \text{ID/g}$ and $10.3\% \pm 0.7$, respectively, $P < 0.0001$). No difference was observed for mean activity in the blood between ^{64}Cu -FTLs and ^{64}Cu -NTLs 3 hours pi. ($28.7\% \pm 1.3\% \text{ID/g}$ and $29.6\% \pm 1.7\% \text{ID/g}$, respectively). However, 24 hours pi. activity of ^{64}Cu -FTLs was significantly lower than ^{64}Cu -NTLs ($4.9\% \pm 0.3\% \text{ID/g}$ and $9.1\% \pm 1.0\% \text{ID/g}$, $P = 0.001$). On the contrary, splenic uptake of ^{64}Cu -FTLs was significantly lower 24 hours pi. relative to ^{64}Cu -NTLs ($8.5\% \pm 0.6\% \text{ID/g}$ and $12.3\% \pm 1.5\% \text{ID/g}$, respectively, $P = 0.032$), whereas no significant difference was observed for mean activity 3 hours pi. ($10.4\% \pm 0.4\% \text{ID/g}$ and $13.2\% \pm 1.5\% \text{ID/g}$, respectively). However, the potential influence of blood volume in the spleen and the difference observed in blood activity 24 hours pi., must be taken into consideration and differences

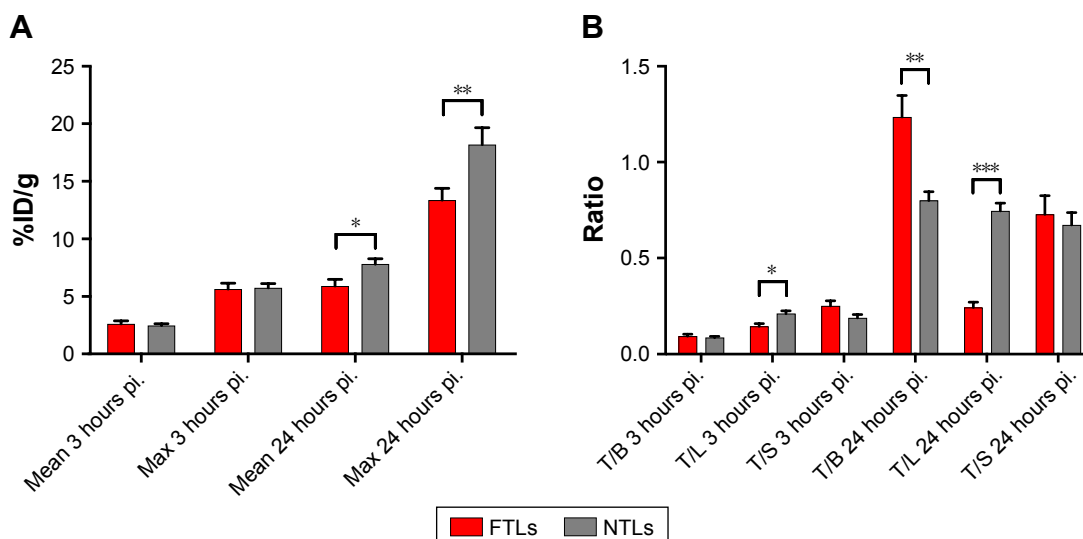


Figure 1 Accumulation of FTL and NTL in tumors.

Notes: (A) PET tumor activity of ^{64}Cu -FTLs and ^{64}Cu -NTLs 3 hours pi and 24 hours pi in tumors. Asterisks indicate statistically different means between mean and maximum activity of ^{64}Cu -FTLs and ^{64}Cu -NTLs ($*P = 0.025$, $**P = 0.011$, unpaired Student's *t*-test). (B) Tumor (T) to blood (B), liver (L), and spleen (S) activity ratios of ^{64}Cu -FTLs and ^{64}Cu -NTLs 3 hours pi. and 24 hours pi. ($*P = 0.0052$, $**P = 0.005$, $***P = 0.001$, unpaired Student's *t*-test, bars represent mean %ID/g \pm SEM).

Abbreviations: NTL, nontargeting liposomes; FTL, folate-targeting liposomes; SEM, standard error of mean; pi., postinjection.

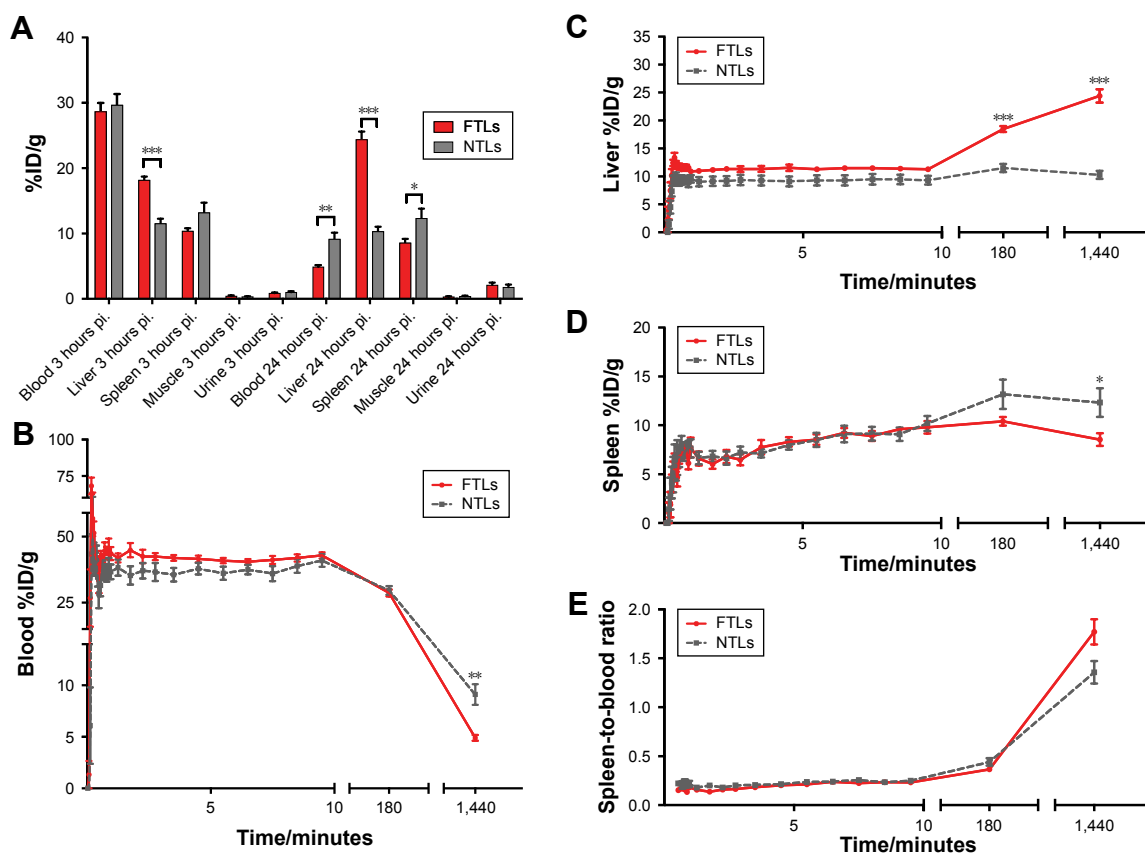


Figure 2 Biodistribution of FTLs and NTLs.

Notes: (A) Biodistribution of ^{64}Cu -FTLs and ^{64}Cu -NTLs 3 hours pi. and 24 hours pi. Asterisks indicate statistically different means between the mean and maximum activity of ^{64}Cu -FTLs and ^{64}Cu -NTLs (bars represent mean %ID/g \pm SEM). (B–D) TAC of blood (B), liver (C), and spleen (D) activity of ^{64}Cu -FTLs and ^{64}Cu -NTLs during a 10-minute dynamic PET scan immediately after injection and static 3 hours and 24 hours pi. scans (mean \pm SEM). (E) TAC of spleen-to-blood ratios for ^{64}Cu -FTLs and ^{64}Cu -NTLs during the initial 10-minute dynamic PET scan and static 3 hours and 24 hours pi. scans (mean \pm SEM, * $P=0.032$, ** $P=0.001$, *** $P<0.00001$, unpaired Student's *t*-test).

Abbreviations: NTL, nontargeting liposomes; FTL, folate-targeting liposomes; TAC, time-activity curves; PET, positron emission tomography; SEM, standard error of mean.

can probably not solely be attributed to splenic uptake. No difference was observed for uptake levels in muscle 3 in 24 hours pi. (Figures 2A and 3).

Dynamic uptake of the liposomal formulation was determined from the initial dynamic PET scan and scans 3 and 24 hours pi. (Figure 2B). TACs illustrate the increased blood clearance and hepatic accumulation of ^{64}Cu -FTLs relative to ^{64}Cu -NTLs (Figure 2B and C). Interestingly, splenic TAC illustrates the higher activity of ^{64}Cu -NTLs rather ^{64}Cu -FTLs 24 hours pi. (Figure 2D). However, constructing a TAC of the spleen-to-blood ratio reverses this observation, which could indicate that the observed difference could be attributed to the higher activity of ^{64}Cu -NTLs in the blood (Figure 2E).

Tumor uptake of FTLs after folic acid coadministration

Tumor volume was compatible between the four groups of mice in the study part 2 ($119.6\pm 12.9\text{ mm}^3$), although slightly larger than the mean tumor volume of the tumors in study part 1 following a longer growth period. No difference in

mean tumor activity between the group receiving excess folic acid or vehicle and ^{64}Cu -FTLs or ^{64}Cu -NTLs was observed 3 hours pi. (Figure 4A). However, 24 hours pi., tumors in both ^{64}Cu -NTLs groups display a higher mean and maximum activity of radiolabeled liposomes relative to groups receiving ^{64}Cu -FTLs ($P<0.0001$). Treatment with folic acid or vehicle mediated no change in tumor uptake between the ^{64}Cu -FTLs groups or between the folic acid and vehicle ^{64}Cu -NTLs mice (Figure 4A).

Effect of coadministration of excess folic acid on biodistribution and uptake kinetics of FTLs and NTLs

The coadministration of excess folic acid reduced the mean liver activity of ^{64}Cu -FTLs 3 hours pi. to $12.85\pm 0.9\%$ ID/g, which was not statistically higher than the folic acid ($11.7\pm 0.9\%$ ID/g) and vehicle ($11.3\pm 0.4\%$ ID/g) treated ^{64}Cu -NTLs mice. Liver activity in ^{64}Cu -FTLs mice receiving vehicle was significantly higher ($18.3\pm 1.6\%$ ID/g) compared to all other groups ($P=0.0005$). However, the

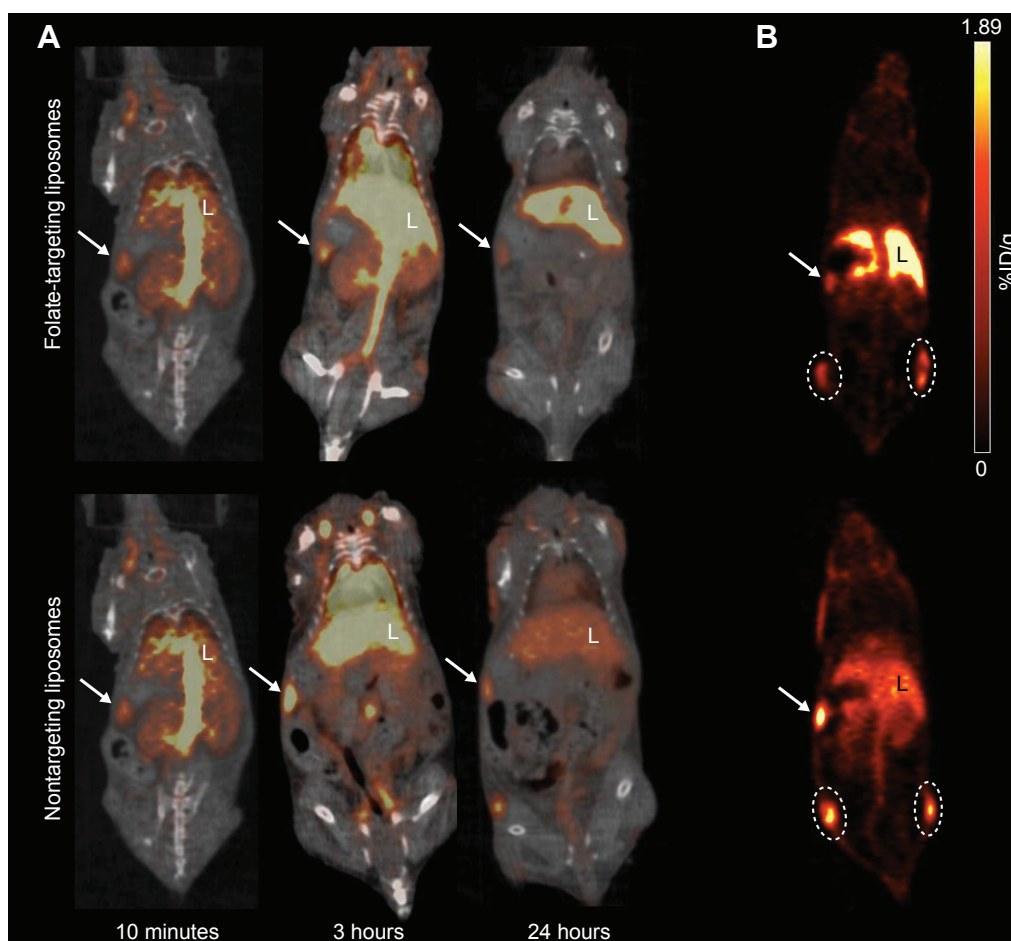


Figure 3 PET/CT of FTLs and NTLs in tumor-bearing mice.

Notes: (A) ^{64}Cu -liposome PET/CT images of ^{64}Cu -FTLs 10 minutes, 3 hours, and 24 hours pi. (top images) and ^{64}Cu -NTLs 10 minutes, 3 hours, and 24 hours pi. (bottom images). Liver (L), spleen (arrow). (B) ^{64}Cu -liposome PET images 24 hours pi. of tumor uptake of ^{64}Cu -FTLs (top image) and ^{64}Cu -NTLs (bottom image). Left and right flank tumors are encircled in white, liver (L), spleen (arrow).

Abbreviations: FTL, folate-targeting liposomes; NTL, nontargeting liposomes; PET/CT, positron emission tomography/computed tomography.

effect of excess folic acid on liver uptake was no longer evident 24 hours pi., where mean liver activity of ^{64}Cu -FTLs in the folic acid ($19.3\% \pm 0.9\% \text{ID/g}$) and vehicle group ($22.4\% \pm 1.1\% \text{ID/g}$) was no longer significantly different and both were significantly higher than ^{64}Cu -NTLs in the folic acid ($11.6\% \pm 0.6\% \text{ID/g}$) and vehicle group ($11.2\% \pm 0.8\% \text{ID/g}$) ($P < 0.0001$) (Figure 4B). Additionally, liver activities during the first 120 minutes pi. of FTLs coadministered with folic acid resembled NTLs administered with a vehicle while FTLs with vehicle displayed higher liver activity (Figure 4C).

Blood activity of radiolabeled liposomes was not statistically different between groups 3 hours pi. The blood activity levels 24 hours pi. were statistically lower in both ^{64}Cu -FTLs groups (folic acid; $2.8\% \pm 0.3\% \text{ID/g}$ and vehicle; $2.8\% \pm 0.3\% \text{ID/g}$) in comparison to ^{64}Cu -NTLs (folic acid; $6.1\% \pm 0.4\% \text{ID/g}$ and vehicle; $6.3\% \pm 0.2\% \text{ID/g}$) ($P < 0.0001$). The activity of radiolabeled liposomes in the spleen was not

statistically different between any of the groups 3 hours pi. nor 24 hours pi. (Figure 4B).

Dynamic PET scanning was performed to evaluate the influence of coadministration of excess folic acid on the initial liver uptake of mice receiving ^{64}Cu -FTLs and excess folic acid or vehicle and ^{64}Cu -NTLs plus vehicle. Comparison of the liver TAC indicates that coadministration of excess folic acid delays the initial liver activity of ^{64}Cu -FTLs to a level comparable to ^{64}Cu -NTLs. However, after the first-hour uptake rate increases to a level comparable to that of ^{64}Cu -FTLs vehicle-treated mice. TACs are based on only two mice in each group and they must be carefully interpreted.

Discussion

Despite the generally positive effects of FTLs in vitro, studies conducted in vivo have failed to yield compatible improved efficacy. This limited success of intravenously administered

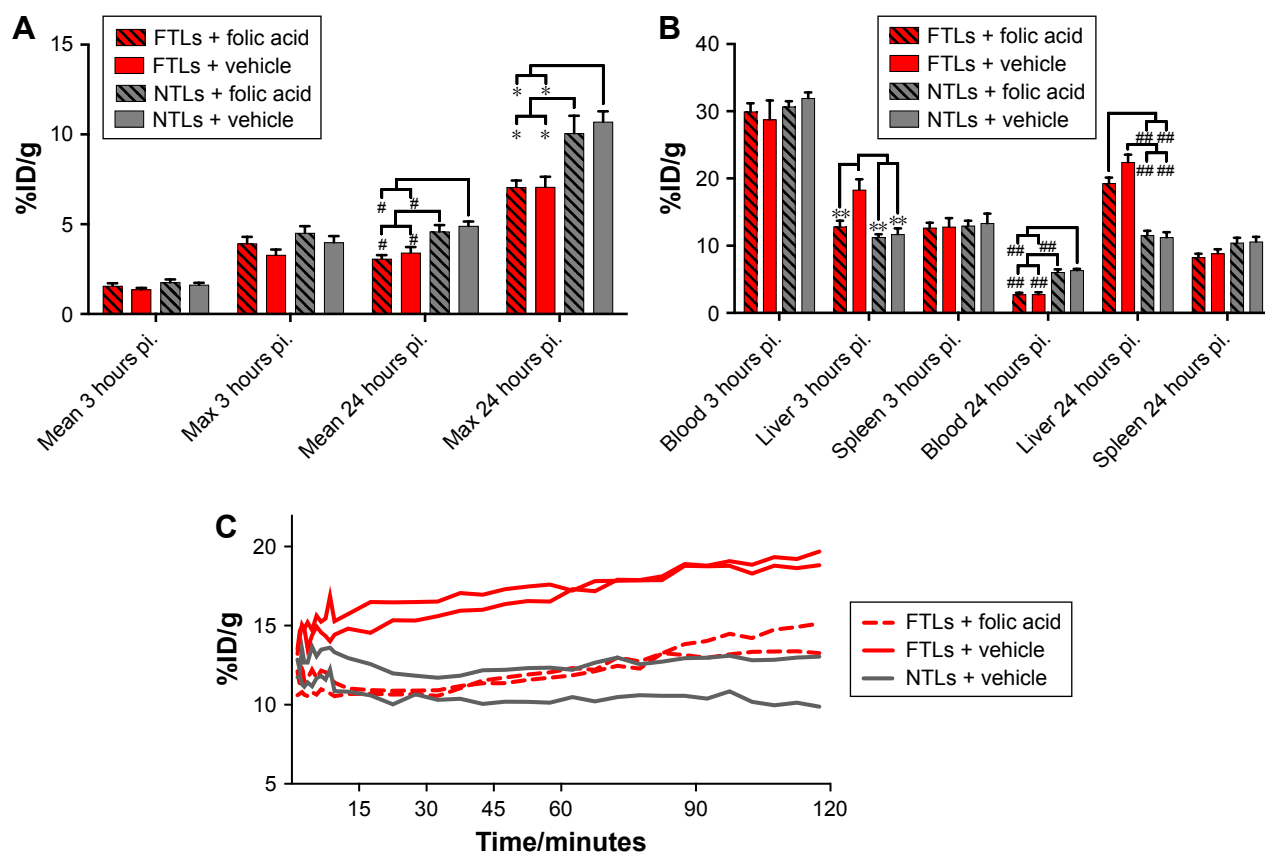


Figure 4 Biodistribution of FTLs and NTLs in competition with folic acid.

Notes: (A) PET tumor activity of ^{64}Cu -FTLs and ^{64}Cu -NTLs with folic acid or vehicle coadministration 3 hours pi. and 24 hours pi. Tumor mean and maximum activity was statistically higher for ^{64}Cu -NTL in comparison to ^{64}Cu -FTL independent of administration of folic acid ($^{##}P=0.0005$ and $^{*}P<0.0001$). (B) Biodistribution of ^{64}Cu -FTLs and ^{64}Cu -NTLs with folic acid or vehicle coadministration 3 hours pi. and 24 hours pi. Folic acid predosing was able to reduce early (3 hours pi.) mean liver activity of ^{64}Cu -FTL to the level of ^{64}Cu -NTL liver activity. The liver activity of vehicle administered ^{64}Cu -FTL was significantly higher than ^{64}Cu -NTL (vehicle and folic acid predosed) and folic acid predosed ^{64}Cu -FTL ($^{**}P<0.01$). Independent of folic acid or vehicle predosing the blood mean activity 24 hours pi. was significantly higher for ^{64}Cu -NTL in comparison to the both ^{64}Cu -FTL groups ($^{###}P<0.0001$). At 24 hours pi. mean liver activity of both folic acid and vehicle predosed ^{64}Cu -FTL groups was significantly higher than ^{64}Cu -NTL groups independent of predosing ($^{###}P<0.0001$). (C) 2-hour dynamic liver activity (%ID/g) of ^{64}Cu -FTL and folic acid predosing ($n=2$) or vehicle ($n=2$) and ^{64}Cu -NTL and vehicle ($n=2$) on PET scans commencing simultaneously with the injection of radiolabeled liposomes (bars represent mean %ID/g \pm SEM. All comparisons were performed using one-way ANOVA analysis and post hoc Tukey multiple comparison analysis).

Abbreviations: FTL, folate-targeting liposomes; NTL, nontargeting liposomes; PET, positron emission tomography; SEM, standard error of mean; pi., postinjection.

liposome formulations targeting FRs was the basis for the present study, which aimed to provide direct quantitative information on tumor accumulation and circulating characteristics of FTLs by high sensitive and quantitative PET imaging.^{4,6,21}

The presented data illustrate the impact of the reduced circulating half-life of FTLs on tumor accumulation and that actively targeting FRs, highly expressed on cancer cells, does not improve overall delivery. FTLs were rapidly taken up in the liver which was already observable 3 hours pi. The high level of liver uptake has previously been reported for both FTLs and folate-targeting imaging agents.^{9,11}

This study was conducted on relatively small solid tumors. This was based on the previously reported improved therapeutic efficacy of encapsulated doxorubicin in FTLs in comparison to NTLs in small KB xenografts inoculated in the footpad of mice,⁴ which suggested a potential targeting

possibility in small tumors. The larger tumors in the second part of the study displayed slightly lower mean tumor uptake, supporting previous reports of lower EPR-based liposome uptake with increasing tumor size.²²

Although a folate-restricted diet might be expected to boost FR expression, it has been shown not to influence folate binding of KB xenografts and M109 tumors in mice⁹, and thus this study was conducted without feeding mice folate-restricted diets. Additionally, low-folate diets were shown to increase tissue retention of folate-targeted radiopharmaceuticals^{23,24} which would further deplete circulating FTLs.

The effect of blocking uptake by liver by coadministering excess folic acid to improve the circulating properties of FTLs was investigated. This approach has been identified to decrease uptake in liver and other tissues expressing high levels of FRs¹¹ and a similar folate preinjection approach has

been safely performed in human ovarian and endometrial cancer patients.²⁵ Thus, intravenous preinjection of excess folate had acceptable translational potential and was chosen over the intraperitoneal administration of very high doses of folic acid, which may result in a more prolonged blockade of hepatic receptors.²⁴ A preinjection of excess folic acid has, additionally, been shown to decrease tumor accumulation of folate-targeting radiotracers^{11,26} and may have no effect on liposome accumulation in tumor.⁹ In this study, the results of folic acid coadministration demonstrate no difference between FTLs and NTLs uptake levels in tumors of mice pretreated with folic acid or vehicle. Liver uptake was only significantly reduced in folic acid injected mice in the 3 hours PET scan, indicating that the blockade is short lived and insufficient for liposomes with long-circulating half-lives. To increase the circulating half-life of FTLs, multiple doses or long-acting folic acid may be needed which, following the reported blockade of tumor cell receptors by the excess folic acid administration, could directly inhibit the cancer cell-targeting strategy. Importantly, the influence of folate-mediated liver uptake in humans injected with FTLs remains to be determined. However, the liver is the primary storage organ for folate and FRs are expressed by activated human macrophages. Macrophage-mediated uptake and elimination may therefore also be an important issue for circulatory properties in humans.^{27–29} Alternatively, administration of antifolates (eg, pemetrexed) has been performed in conjunction with FR-targeting agents and shown to decrease renal uptake without affecting tumor uptake.³⁰ Administration of pemetrexed may, however, be associated with unwanted side effects, especially in patients already undergoing chemotherapy.

The results of this study indicate that the EPR effect and circulating properties of liposome formulations determine the liposome levels that may be achieved, independently of active tumor cell receptor targeting. This statement is supported by the previously observed reduced, but more compatible, uptake levels of somatostatin receptor targeting liposomes relative to NTLs.¹⁰

The results demonstrate that the active targeting of FRs on human cancer cells with known high expression decreases the overall liposome uptake within solid tumor xenografts. Thus, drug delivery by liposomes targeting FRs significantly decrease the total amount of liposomes delivered to solid tumors. It is therefore of key importance to include a nontargeting liposomal comparator when evaluating anti-cancer therapy based on targeting liposomes if statements on the improved efficiency of active targeting are to be

valid. Despite the lack of valid comparators, FTLs have been purported to provide improved therapeutic efficacy based on their targeting properties although this effect is primarily attributable to an EPR-based improved drug delivery within tumors.³¹

The presented data do not provide information on the uptake levels achieved in single cancer cells within the solid tumor mass between targeting and NTLs. Several studies and reviews highlight the increased cellular uptake by active targeting as a method to increase the amount of drug delivered and thus improve the therapeutic efficacy.³

This consideration might be attractive if all cells within solid tumors were readily accessible for nano-sized particles. However this does not seem to be the case.⁷ Active targeting to the more readily available neo-angiogenic tumor vasculature is far more appealing. Several attractive vascular targets are probably directly accessible to circulating liposomes and could allow accumulation and subsequent triggered drug release within the vasculature to increase loco-regional drug concentration.^{32,33} FTLs may have therapeutic potential beyond the direct targeting of FR expressing cancer cells as important associations between tumor-associated macrophages (TAMs) expressing FR- β and malignant characteristics has been identified. TAMs play prominent roles in angiogenesis, cancer cell invasion, and extravasation. FR- β expressing TAM has additionally been shown to mediate potent immunosuppressive functions.^{34–36} Importantly, with respect to the perivascular accumulation liposomes, the TAMs reside in the perivascular compartment thus making them potential targets that could be reached by FTLs.^{34,37} The majority FR- β expressing TAM in human pancreatic cancer has additionally been shown to express vascular endothelial growth factor which increases vascular permeability and therefore potentially improved liposome extravasation to perivascular areas harboring FR- β TAMs.^{34,38}

Notwithstanding the challenges faced EPR-based liposome accumulation in solid cancer remains an attractive methodology for drug delivery, however, achieving improved targeting and triggered release within the accessible extracellular compartments remain an important goal.

Directly targeting specific cancer cell receptors, including FRs, has proven successful in numerous *in vitro* studies.^{39–42} Varying therapeutic effects of FR-targeting in tumor models has been observed in *in vivo* studies, ranging from promising to discouraging results^{4,6,14,15,43,44} However, other *in vivo* studies has also, in agreement with the current study, targeted FR with liposomes with poor tumor accumulation compared to controls.^{9,12,45} Although results by previous studies are

somewhat contradicting, it may be partly explained by differences in tumor models, formulations, and other experimental details and, as previously stated, be partly explained by differences in cellular uptake. Previous *in vivo* studies have mainly used ^3H - or fluorophore-imaging to assess biodistribution while the current study included PET/CT imaging to obtain more dynamic and sensitive results. Furthermore, this study demonstrates the importance of *in vivo* studies to demonstrate the actual targeting potential.

In conclusion, targeting FRs provided no improvement of the overall liposome delivery to solid KB xenografts determined by PET. Although only FTLs were included in the present study. It clearly demonstrates that surface modifications to liposomes must be carefully evaluated as this may significantly influence the circulation and biodistribution. Any observed improved *in vitro* cytotoxic efficacy must, therefore, be carefully evaluated as this improved effect, in comparison to long-circulating controls, can easily be lost following significant difference in EPR-dependent tumor accumulation. Further studies are warranted to fully elucidate the potential of various ligands targeting cancer cell receptors and subsequent intratumoral microregional distribution. Importantly, the present study was conducted in a murine xenograft model, which may display a far less complicated tumor environment than clinical cancers and therefore potentially illustrate the problems targeted drug delivery systems faced in clinical cancers. The targeting and therapeutic potential of FTLs may benefit from investigations in additional animal models with a folate metabolism that better simulate human folate metabolism to elucidate their and therapeutic potential fully.

Disclosure

The authors report no conflicts of interest in this work.

References

- Matsumura Y, Maeda H. A new concept for macromolecular therapeutics in cancer chemotherapy: mechanism of tumoritropic accumulation of proteins and the antitumor agent smancs. *Cancer Res.* 1986;46(12 Pt 1):6387–6392.
- Petersen AL, Hansen AE, Gabizon A, Andresen TL. Liposome imaging agents in personalized medicine. *Adv Drug Deliv Rev.* 2012;64(13):1417–1435.
- Noble GT, Stefanick JF, Ashley JD, Kiziltepe T, Bilgicer B. Ligand-targeted liposome design: challenges and fundamental considerations. *Trends Biotechnol.* 2014;32(1):32–45.
- Gabizon A, Tzemach D, Gorin J, et al. Improved therapeutic activity of folate-targeted liposomal doxorubicin in folate receptor-expressing tumor models. *Cancer Chemother Pharmacol.* 2010;66(1):43–52.
- Saul JM, Annapragada A, Natarajan JV, Bellamkonda RV. Controlled targeting of liposomal doxorubicin via the folate receptor *in vitro*. *J Control Release.* 2003;92(1–2):49–67.
- Riviere K, Huang Z, Jerger K, Macaraeg N, Szoka FC. Antitumor effect of folate-targeted liposomal doxorubicin in KB tumor-bearing mice after intravenous administration. *J Drug Target.* 2011;19(1):14–24.
- Yuan F, Leunig M, Huang SK, Berk DA, Papahadjopoulos D, Jain RK. Microvascular permeability and interstitial penetration of sterically stabilized (stealth) liposomes in a human tumor xenograft. *Cancer Res.* 1994;54(13):3352–3356.
- Vaupel P, Mayer A. Hypoxia in cancer: significance and impact on clinical outcome. *Cancer Metastasis Rev.* 2007;26(2):225–239.
- Gabizon A, Horowitz AT, Goren D, Tzemach D, Shmeeda H, Zalipsky S. *In vivo* fate of folate-targeted polyethylene-glycol liposomes in tumor-bearing mice. *Clin Cancer Res.* 2003;9(17):6551–6559.
- Petersen AL, Binderup T, Jølcck RI, et al. Positron emission tomography evaluation of somatostatin receptor targeted ^{64}Cu -TATE-liposomes in a human neuroendocrine carcinoma mouse model. *J Control Release.* 2012;160(2):254–263.
- Müller C, Forrer F, Schibli R, Krenning EP, de Jong M. SPECT study of folate receptor-positive malignant and normal tissues in mice using a novel $^{99\text{m}}\text{Tc}$ -radiofolate. *J Nucl Med.* 2008;49(2):310–317.
- Poh S, Chelvam V, Low PS. Comparison of nanoparticle penetration into solid tumors and sites of inflammation: studies using targeted and nontargeted liposomes. *Nanomedicine.* 2015;10(9):1439–1449.
- Yang J, Chen H, Vlahov IR, Cheng JX, Low PS. Evaluation of disulfide reduction during receptor-mediated endocytosis by using FRET imaging. *Proc Natl Acad Sci U S A.* 2006;103(37):13872–13877.
- Pan XQ, Zheng X, Shi G, Wang H, Ratnam M, Lee RJ. Strategy for the treatment of acute myelogenous leukemia based on folate receptor beta-targeted liposomal doxorubicin combined with receptor induction using all-trans retinoic acid. *Blood.* 2002;100(2):594–602.
- Pan XQ, Wang H, Lee RJ. Antitumor activity of folate receptor-targeted liposomal doxorubicin in a KB oral carcinoma murine xenograft model. *Pharm Res.* 2003;20(3):417–422.
- Yamada A, Taniguchi Y, Kawano K, Honda T, Hattori Y, Maitani Y. Design of folate-linked liposomal doxorubicin to its antitumor effect in mice. *Clin Cancer Res.* 2008;14(24):8161–8168.
- Pan XQ, Lee RJ. *In vivo* antitumor activity of folate receptor-targeted liposomal daunorubicin in a murine leukemia model. *Anticancer Res.* 2005;25(1A):343–346.
- Henriksen JR, Petersen AL, Hansen AE, et al. Remote Loading of $(^{64}\text{Cu}(2+))$ into liposomes without the use of ion transport enhancers. *ACS Appl Mater Interfaces.* 2015;7(41):22796–22806.
- Forster MD, Ormerod MG, Agarwal R, Kaye SB, Jackman AL. Flow cytometric method for determining folate receptor expression on ovarian carcinoma cells. *Cytometry A.* 2007;71(11):945–950.
- Siwowska K, Schmid RM, Cohrs S, Schibli R, Müller C. Folate receptor-positive gynecological cancer cells: *in vitro* and *in vivo* characterization. *Pharmaceuticals.* 2017;10(3):E72.
- Tong L, Chen W, Wu J, Li H. Folic acid-coupled nano-paclitaxel liposome reverses drug resistance in SKOV3/TAX ovarian cancer cells. *Anticancer Drugs.* 2014;25(3):244–254.
- Harrington KJ, Mohammadtaghi S, Uster PS, et al. Effective targeting of solid tumors in patients with locally advanced cancers by radiolabeled pegylated liposomes. *Clin Cancer Res.* 2001;7(2):243–254.
- Leamon CP, Reddy JA, Dorton R, et al. Impact of high and low folate diets on tissue folate receptor levels and antitumor responses toward folate-drug conjugates. *J Pharmacol Exp Ther.* 2008;327(3):918–925.
- Gabizon A, Shmeeda H, Horowitz AT, Zalipsky S. Tumor cell targeting of liposome-entrapped drugs with phospholipid-anchored folic acid-PEG conjugates. *Adv Drug Deliv Rev.* 2004;56(8):1177–1192.
- Siegel BA, Dehdashti F, Mutch DG, et al. Evaluation of ^{111}In -DTPA-folate as a receptor-targeted diagnostic agent for ovarian cancer: initial clinical results. *J Nucl Med.* 2003;44(5):700–707.
- Ross TL, Honer M, Müller C, Groehn V, Schibli R, Ametamey SM. A new ^{18}F -labeled folic acid derivative with improved properties for the PET imaging of folate receptor-positive tumors. *J Nucl Med.* 2010;51(11):1756–1762.

27. Hoppner K, Lampi B. Folate levels in human liver from autopsies in Canada. *Am J Clin Nutr.* 1980;33(4):862–864.
28. Müller A, Beck K, Rancic Z, et al. Imaging atherosclerotic plaque inflammation via folate receptor targeting using a novel 18F-folate radiotracer. *Mol Imaging.* 2014;13(2):1–11.
29. van der Heijden JW, Oerlemans R, Dijkmans BA, et al. Folate receptor beta as a potential delivery route for novel folate antagonists to macrophages in the synovial tissue of rheumatoid arthritis patients. *Arthritis Rheum.* 2009;60(1):12–21.
30. Müller C, Schibli R. Prospects in folate receptor-targeted radionuclide therapy. *Front Oncol.* 2013;3:249.
31. Morton SW, Lee MJ, Deng ZJ, et al. A nanoparticle-based combination chemotherapy delivery system for enhanced tumor killing by dynamic rewiring of signaling pathways. *Sci Signal.* 2014;7(325):ra44.
32. Petersen AL, Binderup T, Rasmussen P, et al. 64Cu loaded liposomes as positron emission tomography imaging agents. *Biomaterials.* 2011;32(9):2334–2341.
33. Chen Q, Tong S, Dewhirst MW, Yuan F. Targeting tumor microvessels using doxorubicin encapsulated in a novel thermosensitive liposome. *Mol Cancer Ther.* 2004;3(10):1311–1317.
34. Kurahara H, Takao S, Kuwahata T, et al. Clinical significance of folate receptor β -expressing tumor-associated macrophages in pancreatic cancer. *Ann Surg Oncol.* 2012;19(7):2264–2271.
35. Puig-Kröger A, Sierra-Filardi E, Domínguez-Soto A, et al. Folate receptor beta is expressed by tumor-associated macrophages and constitutes a marker for M2 anti-inflammatory/regulatory macrophages. *Cancer Res.* 2009;69(24):9395–9403.
36. Quail DF, Joyce JA. Microenvironmental regulation of tumor progression and metastasis. *Nat Med.* 2013;19(11):1423–1437.
37. Wyckoff JB, Wang Y, Lin EY, et al. Direct visualization of macrophage-assisted tumor cell intravasation in mammary tumors. *Cancer Res.* 2007;67(6):2649–2656.
38. Chen XL, Nam JO, Jean C, et al. VEGF-induced vascular permeability is mediated by FAK. *Dev Cell.* 2012;22(1):146–157.
39. Patil Y, Shmeeda H, Amitay Y, Ohana P, Kumar S, Gabizon A. Targeting of folate-conjugated liposomes with co-entrapped drugs to prostate cancer cells via prostate-specific membrane antigen (PSMA). *Nanomedicine.* 2018;14(4):1407–1416.
40. Watanabe K, Kaneko M, Maitani Y. Functional coating of liposomes using a folate-polymer conjugate to target folate receptors. *Int J Nanomedicine.* 2012;7:3679–3688.
41. Guo B, Xu D, Liu X, Yi J. Enzymatic synthesis and in vitro evaluation of folate-functionalized liposomes. *Drug Des Devel Ther.* 2017;11:1839–1847.
42. Wang F, Chen Y, Zhang D, et al. Folate-mediated targeted and intracellular delivery of paclitaxel using a novel deoxycholic acid-O-carboxymethylated chitosan-folic acid micelles. *Int J Nanomedicine.* 2012;7:325–337.
43. Ke X, Lin W, Li X, Wang H, Xiao X, Guo Z. Synergistic dual-modified liposome improves targeting and therapeutic efficacy of bone metastasis from breast cancer. *Drug Deliv.* 2017;24(1):1680–1689.
44. Sriraman SK, Salzano G, Sarisozen C, Torchilin V. Anti-cancer activity of doxorubicin-loaded liposomes co-modified with transferrin and folic acid. *Eur J Pharm Biopharm.* 2016;105:40–49.
45. Patil Y, Amitay Y, Ohana P, Shmeeda H, Gabizon A. Targeting of pegylated liposomal mitomycin-C prodrug to the folate receptor of cancer cells: Intracellular activation and enhanced cytotoxicity. *J Control Release.* 2016;225:87–95.

International Journal of Nanomedicine

Publish your work in this journal

The International Journal of Nanomedicine is an international, peer-reviewed journal focusing on the application of nanotechnology in diagnostics, therapeutics, and drug delivery systems throughout the biomedical field. This journal is indexed on PubMed Central, MedLine, CAS, SciSearch®, Current Contents®/Clinical Medicine,

Submit your manuscript here: <http://www.dovepress.com/international-journal-of-nanomedicine-journal>

Dovepress

Journal Citation Reports/Science Edition, EMBase, Scopus and the Elsevier Bibliographic databases. The manuscript management system is completely online and includes a very quick and fair peer-review system, which is all easy to use. Visit <http://www.dovepress.com/testimonials.php> to read real quotes from published authors.