



Supra-threshold perception and neural representation of tones presented in noise in conditions of masking release

Egger, Katharina; Dau, Torsten; Epp, Bastian

Published in:
PLOS ONE

Link to article, DOI:
[10.1371/journal.pone.0222804](https://doi.org/10.1371/journal.pone.0222804)

Publication date:
2019

Document Version
Publisher's PDF, also known as Version of record

[Link back to DTU Orbit](#)

Citation (APA):
Egger, K., Dau, T., & Epp, B. (2019). Supra-threshold perception and neural representation of tones presented in noise in conditions of masking release. *PLOS ONE*, 14(10), [e0222804].
<https://doi.org/10.1371/journal.pone.0222804>

General rights

Copyright and moral rights for the publications made accessible in the public portal are retained by the authors and/or other copyright owners and it is a condition of accessing publications that users recognise and abide by the legal requirements associated with these rights.

- Users may download and print one copy of any publication from the public portal for the purpose of private study or research.
- You may not further distribute the material or use it for any profit-making activity or commercial gain
- You may freely distribute the URL identifying the publication in the public portal

If you believe that this document breaches copyright please contact us providing details, and we will remove access to the work immediately and investigate your claim.

RESEARCH ARTICLE

Supra-threshold perception and neural representation of tones presented in noise in conditions of masking release

Katharina Egger[‡], Torsten Dau[‡], Bastian Epp[‡]*

Hearing Systems Section, Department of Health Technology, Technical University of Denmark, Kgs. Lyngby, Denmark

‡ Current address: Magna Steyr Fahrzeugtechnik AG & Co KG, Graz, Austria

* bepp@dtu.dk

OPEN ACCESS

Citation: Egger K, Dau T, Epp B (2019) Supra-threshold perception and neural representation of tones presented in noise in conditions of masking release. *PLoS ONE* 14(10): e0222804. <https://doi.org/10.1371/journal.pone.0222804>

Editor: Manuel S. Malmierca, Universidad de Salamanca, SPAIN

Received: March 15, 2019

Accepted: September 6, 2019

Published: October 10, 2019

Copyright: © 2019 Egger et al. This is an open access article distributed under the terms of the [Creative Commons Attribution License](https://creativecommons.org/licenses/by/4.0/), which permits unrestricted use, distribution, and reproduction in any medium, provided the original author and source are credited.

Data Availability Statement: All data can be freely downloaded from: Egger K, Epp B. Raw data: Supra-threshold perception and neural representation of tones presented in noise in conditions of masking release; 2019 [cited 15 March 2019]. Database: Zenodo [Internet]. Available from: <https://doi.org/10.5281/zenodo.2594667>

Funding: The authors received no specific funding for this work.

Competing interests: The authors have declared that no competing interests exist.

Abstract

The neural representation and perceptual salience of tonal signals presented in different noise maskers were investigated. The properties of the maskers and signals were varied such that they produced different amounts of either monaural masking release, binaural masking release, or a combination of both. The signals were then presented at different levels above their corresponding masked thresholds and auditory evoked potentials (AEPs) were measured. It was found that, independent of the masking condition, the amplitude of the P2 component of the AEP was similar for the same stimulus levels above masked threshold, suggesting that both monaural and binaural effects of masking release were represented at the level of the auditory pathway where P2 is generated. The perceptual salience of the signal was evaluated at equal levels above masked threshold using a rating task. In contrast to the electrophysiological findings, the subjective ratings of the perceptual signal salience were less consistent with the signal level above masked threshold and varied strongly across listeners and masking conditions. Overall, the results from the present study suggest that the P2 amplitude of the AEP represents an objective indicator of the audibility of a target signal in the presence of complex acoustic maskers.

Introduction

One major task of the auditory system is to distinguish between different sound sources and segregate single sources from the acoustic background. For sound segregation and identification, the auditory system utilizes monaural cues, such as spectro-temporal information contained in the sound, as well as binaural cues, such as interaural disparities occurring at the two ears (i.e., interaural level- and time differences). The ability of the auditory system to benefit from these cues is often assessed via the effect of masking of a tonal signal by a noise masker.

Many aspects of auditory signal detection in noise can be accounted for by the power spectrum model of masking [1]. This model assumes that the frequency selectivity of the auditory system can be represented as a bank of overlapping band-pass filters and that the detection threshold of a tonal signal in the presence of a noise masker is mainly determined by the signal-to-masker energy ratio at the output of a band-pass filter centered at the signal frequency.

Some masking data, however, cannot be accounted for by the power spectrum model. For example, when the masker exhibits coherent intensity fluctuations across frequency, the masked thresholds of signals presented in noise are lower than predicted by the power spectrum model. This monaural phenomenon of improved signal detectability due to coherent intensity fluctuations of the masker across frequency has been referred to as comodulation masking release (CMR) (for a review, see [2]). There are two experimental CMR paradigms, the band-widening paradigm and the flanking-band paradigm. In the band-widening paradigm, the masker is spectrally centered at the signal frequency and is either unmodulated or comodulated. The bandwidth-dependent difference in masked threshold between the comodulated and the unmodulated masker conditions is then referred to as CMR, or modulated-unmodulated difference [3].

In the flanking-band paradigm, the masker consists of several narrow bands of noise whereby one masker band is centered at the signal frequency, the signal centered band (SCB), and one or more bands, the flanking bands (FBs), are spectrally separated from the signal frequency (e.g., [4–6]). In this paradigm, CMR has been defined in two ways: 1) as the difference in masked threshold between the conditions with the SCB alone and when the SCB and comodulated FBs are presented; or 2) as the difference in masked threshold for uncorrelated versus comodulated masker bands. In the first definition, the addition of masker bands leads to a broadening of the masker power spectrum. In contrast, in the second definition, the release from masking can be attributed to the change from uncorrelated to comodulated masker intensity fluctuations while keeping the power spectrum of the masker constant. A release from masking can also be found when the signal and the masker are presented at different spatial locations compared to a condition in which both sounds are presented at the same location. Differences in the spatial location of the signal and the masker lead to differences in binaural cues between the signal and the masker. These binaural cues can lead to an enhanced signal detectability which is commonly referred to as binaural masking level difference (BMLD) [7–8]. Effects of BMLD have typically been investigated in experiments with tonal signals masked by a band of noise centered at the signal frequency where either the signal or the noise masker contained an interaural phase difference (IPD) [9]. The BMLD has been defined as the difference in threshold between the diotic condition, where the signal and the masker are presented in phase across ears, and a dichotic condition, where either the signal or the masker is presented interaurally out of phase. The magnitude of the BMLD is large for narrow bands of noise and decreases with increased bandwidths.

The effects of CMR, BMLD, and their combination have commonly been studied at signal levels close to masked threshold (e.g., [10–15]), whereas their contribution to the perception of signals above masked threshold (i.e., supra-threshold) has received much less attention. The benefit of CMR at supra-threshold levels has mainly been discussed in connection to either speech detection and recognition tasks (e.g., [16–18]) or regarding signal intensity and frequency discrimination tasks (e.g., [19–20]). In terms of binaural processing, the perceived intensity of a signal, i.e., its loudness, has primarily been studied in conditions of BMLD at different supra-threshold levels of the signal in the presence of noise (e.g., [9, 21–22]). More recently, Verhey and Heise [23] investigated the magnitude of the tonal content as well as the partial loudness of a tonal signal in the presence of a noise masker. In their study, conditions with and without monaural and binaural masking releases at different signal levels above the respective masked thresholds were used. Verhey and Heise [23] showed that the masking releases were strongest at low signal levels above masked threshold and decreased towards higher levels. The connection of loudness and CMR was investigated using a categorical loudness-scaling procedure and loudness matching by Verhey and Heeren [24]. Their study was aimed to measure the partial loudness of a tonal signal in the presence of an unmodulated or a

square-wave modulated noise masker. Verhey and Heeren [24] found an increase in loudness in conditions of masking release compared to their reference condition. However, large inter-individual differences were found, especially when using the loudness-scaling procedure.

The above-mentioned studies were all either focused on monaural processing, regarding CMR, or on binaural processing, regarding BMLD, whereas the supra-threshold perception of the combined effect of CMR and BMLD has not yet been investigated. It is therefore still unknown to what extent the two effects contribute to supra-threshold perception. An important factor in combined CMR/BMLD paradigms evaluating perception is the difference in maskers used in CMR and BMLD experiments. The narrow-band maskers used in flanking-band types of CMR experiments have a tonal character, whereas noise maskers with a broad bandwidth commonly used in BMLD experiments do not show a tonal character when exceeding a certain bandwidth. While this presumably does not play a role in detection experiments, it must be thoroughly considered at supra-threshold levels. Another challenging factor in supra-threshold perception is the high dimensionality of the perceptual space. Most perceptual attributes co-exist and contribute to the separation of a complex sound into auditory objects. Hence, when evaluating the connection between a neural marker and the perceptual characteristics of a sound in a supra-threshold paradigm, it is important to assess a combined perceptual attribute rather than only one perceptual dimension.

Various physiological studies investigated the neural mechanisms underlying the processing and representation of the auditory cues that lead to a perceptual masking release. A physiological correlate of CMR in human listeners has been proposed at cortical levels using electroencephalography (EEG) [25], magnetoencephalography (MEG) [26], as well as functional magnetic resonance imaging (fMRI [27–28]). Physiological correlates of BMLD in humans have also been investigated at different levels along the auditory pathway using EEG [29–31], MEG [32–33], and fMRI [34].

Billings et al. [35] compared late auditory potentials evoked by a speech syllable presented in speech-shaped noise with the performance in a behavioral sentence identification task at different signal-to-masker ratios. They identified the N1 component of the electrophysiological response as a correlate of behavioral performance. However, while the N1 component was found to be mainly dependent on the signal-to-masker ratio, the behavioral data showed a signal-level dependent behavior, complicating the relation between behavioral performance and evoked potentials amplitude.

Epp et al. [36] recorded evoked potentials of masked tonal signals in conditions of masking release at different signal-to-masker ratios in a flanking-band paradigm. At a fixed signal-to-masker ratio, the level of the signal above masked threshold was altered by the introduction of monaural across-frequency cues to the masker (yielding CMR), binaural cues to the tonal signal (yielding BMLD), or a combination of both. Epp et al. [36] found a combined effect of CMR and BMLD reflected in the N1/P2 complex of the evoked potential. The N1 component was sensitive to the introduction of binaural cues, but did not show any sensitivity to monaural across-frequency cues. In contrast, the amplitude of the P2 component at a given signal-to-masker ratio was found to be larger in conditions with comodulated noise than in conditions with uncorrelated noise. A larger P2 amplitude was also observed when binaural cues were introduced to the tonal signal as well as when both cues were present. In fact, the P2 amplitude was of similar size in experimental conditions where the signal was presented at a similar level above its masked threshold. This was not the case for neither the N1 component nor the P2-N1 difference amplitude. Epp et al. [36] therefore suggested that the P2 component might be a potential candidate for the neural representation of the partially masked signal at the corresponding level above masked threshold.

In [36], CMR was defined as the difference in threshold when using masker bands with uncorrelated and with comodulated intensity fluctuations across frequency. This choice was based on the argument that the BMLD depends on the masker bandwidth. In order to quantify the contribution of IPD to the overall masking release in the presence of comodulation, the masker bandwidth needs to be constant for the conditions with and without comodulation of the FBs. In the alternative definition of CMR, where the masking release is defined as the difference in threshold between absence and presence of comodulated FBs, the masker bandwidth changes. This might affect the amount of BMLD, which, in turn, complicates the interpretation of the data. It is, however, still unclear if the spectral notches between the masker bands (as used in [36]) have an influence on the BMLD or if only the minimum and maximum frequency of the masker components define the effective bandwidth contributing to the BMLD.

The hypothesis of the present study was that signals at the same level above masked threshold evoke the same P2 amplitudes in the corresponding evoked potential, inspired by the data in [36]. It was further postulated that there exists a perceptual correlate of the pure-tone signal level above masked threshold, the “perceptual salience”. It is hypothesized that the P2 amplitude correlates with the perceptual salience of the pure tone, independent of the presence, magnitude or mechanism of masking release. To test this, the present study extended the investigations of [36] and considered three experiments using a flanking-band paradigm: In the first experiment, behavioral detection thresholds of masked tonal signals were obtained in conditions reflecting either purely monaural, purely binaural, or a combination of monaural and binaural masking releases. In a second experiment, AEPs for the masked signals were recorded in the same listeners at individually adjusted signal levels corresponding to equal levels above their respective masked thresholds. Finally, in a third experiment, the listeners rated the perceptual salience of the signal embedded in the noise masker at equal signal levels above their respective masked thresholds. Following [36], narrowband masker bands with uncorrelated or comodulated intensity fluctuations across frequency were used in order to avoid frequency-dependent effects of the BMLD. In order to test the potential impact of spectral gaps on the BMLD and the tonal character of the FBs on the perceived salience, a broadband masker covering the same spectral range as the set of narrowband maskers was included in the study.

Materials and methods

Stimuli

The signal was a 700 Hz tone of 300 ms duration, including 20 ms raised-cosine on- and offset ramps. The signal was presented either with the same interaural phase, i.e., an IPD of 0 degree (diotic condition), or interaurally out of phase (dichotic condition) with an IPD of 150 degree. An IPD of 150 degrees was encouraged by the maximum IPD that human listeners can perceive due to the limitation of the circumference of the head, based on the average maximum, nonambiguous IPD calculated out of head-related transfer functions (HRTFs) of 68 listeners (HRTF database of the Acoustics Research Institute, Austrian Academy of Sciences).

The masker consisted of either five narrowband noise bands (“multi-band conditions”) or one broadband noise (“broadband condition”). In the multi-band conditions, each noise band was 24 Hz wide and had a sound pressure level (SPL) of 50 dB. One noise band, the SCB, was centered at the signal frequency (700 Hz) and the other four bands, the FBs, were arranged symmetrically (on a linear frequency scale) with respect to the SCB at 300, 400, 1000, and 1100 Hz. The remote spectral distance between the SCB and the FBs was chosen in order to reduce interactions of the FBs with the SCB, which might lead to within-channel cues contributing to

CMR (see also [37]). The noise bands had either uncorrelated or comodulated intensity fluctuations across frequency, subsequently denoted as UN and CM masker, respectively. The broadband (BB) masker was an 824-Hz wide noise band centered at the signal frequency (700 Hz) and had an overall level of 60 dB SPL. This level was chosen since it produces approximately the same amount of energy that passes the auditory filter centered at the signal frequency as the SCB in the multi-band conditions [38]. Hence, a similar masking effect produced by the BB masker was expected as for the UN masker.

All maskers were presented diotically and had a duration of 900 ms, including 20 ms raised-cosine on- and offset ramps. The signal was presented in the last 300 ms of the masker. This was done to avoid a temporal overlap of the masker onset response and the signal onset response in the AEPs. The signal in both binaural conditions was combined with each of the maskers resulting in six different stimulus conditions: the diotic signal presented in either uncorrelated noise (UN₀), comodulated noise (CM₀), or broadband noise (BB₀) and the dichotic signal presented in the same masker types (UN₁₅₀, CM₁₅₀, and BB₁₅₀, respectively).

The noise bands were generated by multiplying a random-phase sinusoidal carrier at the desired frequency with a low-pass noise without a DC component. The low-pass noise was generated in the frequency domain by assigning numbers between ± 0.5 from a uniformly distributed random process to the real and imaginary parts of the respective frequency components with a frequency resolution of 1 Hz. For the UN and BB maskers, independent realizations of the low-pass noise were used for each masker band, while the same low-pass noise was used for all five bands of the CM masker. The masking noise was newly generated for each interval and each trial, transformed into the time domain and shortened to a duration of 900 ms.

Apparatus

All stimuli were digitally generated in MATLAB with a sampling rate of 44100 Hz and a 16-bit resolution, converted from digital to analogue (RME DIGI96/8 PAD, experiments 1 and 3; RME Fireface UCX, experiment 2) and presented via circumaural headphones (Sennheiser HD580, experiments 1 and 3) or via in-ear headphones (Etymotic ER-2, experiment 2). In experiment 2, the Psychophysics Toolbox extensions for MATLAB [39–40] were used. The headphones were calibrated and equalized at the signal frequency of the tone.

AEPs were recorded using a BioSemi ActiveTwo measurement system. The listeners wore an elastic cap with plastic electrode holders for 64 sintered Ag/AgCl pin-type electrodes. The electrode holders were filled with highly conductive, Signa electrode gel to reduce the contact impedance between electrode and skin. The common reference was the electrode placed at the left mastoid (P9), according to the extended 10/20 layout as standardized by the American Electroencephalographic Society (e.g., [40–41]). The electrodes were connected to the ActiveTwo AD-box, which amplified and performed A/D conversion of the measured potentials with a sampling rate of 1024 Hz and a 24-bit resolution. The potentials were recorded with the data acquisition software ActiView (version 6.05), which streamed the continuous EEG to hard disk. During the recordings, an anti-aliasing digital low-pass filter with a cut-off frequency of 200 Hz was used together with a digital high-pass filter with a cut-off frequency of 0.16 Hz to reduce the influence of slow, non-neural potentials, such as skin potentials [42].

Listeners

Eight listeners (three female, five male), aged between 22 and 28 years, participated in the experiments. None of them reported any history of hearing impairment. All listeners had pure-tone hearing thresholds within 15 dB HL for the standard audiometric frequencies

from 125 to 4000 Hz. All listeners were paid an hourly wage for their participation. The listeners were the same in all three experiments. During the psychoacoustical experiments, the listeners were seated in a double-walled, sound-attenuating booth. The AEP experiment was carried out in a double-walled and electrically shielded, sound-attenuating booth. All participants provided written consent and all experiments and procedures were approved by the Science-Ethics Committee for the Capital Region of Denmark (reference H-KA-04149-g).

Procedure

In the first experiment, detection thresholds of the masked signals were measured for each listener in all six stimulus conditions: UN, CM, and BB maskers with a diotic signal (UN₀, CM₀, BB₀) and UN, CM, and BB masker with a signal IPD of 150 degrees (UN₁₅₀, CM₁₅₀, and BB₁₅₀). An adaptive, three interval, three-alternative forced-choice procedure with visual feedback was used. The intervals within a trial were separated by pauses of 500 ms. The listeners had to indicate the interval in which the signal was presented by pressing the corresponding key on the keyboard. The adaptive signal level adjustment followed a one-up two-down algorithm to estimate the 70.7% point of the psychometric function [43]. The initial step size was 8 dB. After each lower reversal, the step size was halved until it reached the minimum step size of 1 dB. This step size was kept constant for another six reversals and the mean of the signal level at the reversals was calculated and used as the estimated threshold for that run. Each listener performed four threshold measurements per stimulus condition whereof the arithmetic mean of the threshold estimates of the last three runs was taken as the final individual threshold estimate. The different stimulus conditions were presented in random order within blocks, where each condition occurred once.

In the second experiment, late AEPs for the masked signals were recorded for all stimulus conditions. The signal levels were adjusted to 10, 15, 20, and 25 dB above the masked thresholds of the individual listener (obtained in experiment 1). The stimuli were presented in random order, evenly distributed over 400 sweeps (i.e., 400 repetitions per stimulus condition and level). The presentations were separated by a random inter-stimulus interval between 550–650 ms. During the EEG recordings, the listeners were presented a quiet movie of their choice with subtitles on a low-radiation screen. The listeners were asked to relax but not to fall asleep and to avoid moving as far as possible. The experiment was divided in six blocks of approximately 35 minutes each, whereof two blocks were recorded in one session. The listeners participated in three sessions distributed over different days.

In the third experiment, the listeners rated the perceptual salience of the tone embedded in the masking noise for all stimulus conditions by magnitude estimation. The signal levels were individually-adjusted to -10, 0, 5, 10, 15, and 20 dB relative to the masked thresholds. The test signals to be judged (i.e., the tones embedded in masking noise) were presented in paired trials with a fixed reference which was a diotic 700-Hz tone presented at 70 dB SPL. In each trial, the reference tone and the test signal could be played as often as the listeners desired and were accessed either by pressing the corresponding keys or by clicking the corresponding buttons with the mouse. The listeners had to rate the salience of the tone in the test signal on an endpoint-anchored scale by using a continuous slider. The scale was anchored by 'not audible' on the lower end and by 'reference' on the upper end. These anchors were combined with a scale without labels in between, as suggested in [44]. The slider's position was linearly mapped onto a numerical scale between 0 (designating the lower anchor 'not audible') and 10 (designating the upper anchor 'reference'). The listeners were not aware of the mapping. Prior to the experiment, the listeners were told that the experiment contained the same types of stimuli they had

been listening to in the previously performed measurements. The following written instructions were displayed on the screen preceding the actual experiment:

You will hear signal pairs consisting of a fixed reference (pure tone) and the test signal (pure tone plus noise). While the tone in the test signal has the same frequency as the reference, other properties may differ.

Please evaluate the salience of the target tone (i.e., how well can the tone be segregated from its background noise?).

Do not limit your judgment to the loudness of the test signal. Instead, please focus on how well the tone in the test signal stands out from the background. It may help to focus on the frequency of the tone in the test signal.

You will be able to listen to both the reference and the test signal as often as you wish. Please place your rating of the salience of the tone in the test signal by moving the slider's position on the given scale. The lowest end of the scale corresponds with 'not audible'. The highest end of the scale is labeled 'reference' and indicates that you perceive the target tone to be as salient as the reference.

The experiment will be preceded by a training session.

To familiarize the listeners with the task, a short training session was provided before the initial run of the experiment, using stimulus examples of varying perceptual saliences. Four different types of stimulus examples were presented: (1) the reference tone; (2) the masking noise alone, randomly representing either the UN, CM, or BB masker; (3) the masked signal in one stimulus condition randomly selected out of all six (UN₀, CM₀, BB₀, UN₁₅₀, CM₁₅₀, or BB₁₅₀), at a supra-threshold level, corresponding to 25 dB above masked threshold; and (4) randomly selected stimuli of all stimulus conditions with signal levels as used in the experiment.

The stimuli were tested in random order within blocks, where each level for each stimulus condition occurred once, i.e., each block contained each stimulus condition once. Sixteen blocks were presented, whereof the very first block was considered as additional training and excluded from further data analysis. The individual salience ratings were therefore derived from fifteen responses per stimulus condition and level.

Data analysis

The continuous EEG data were processed off-line in MATLAB to extract the late AEPs. Single sweeps of a time interval of 1200 ms (150 ms pre-stimulus period and 1050 ms following the stimulus onset) were extracted corresponding to the different stimulus conditions and levels. For each sweep, a linear fit was subtracted from the waveform to remove low-frequency potential drifts (e.g., [45]). The fit was based on the intervals 150 ms before the signal onset (at 600 ms) and 150 ms after the stimulus. The data were then digitally filtered with a zero-phase, second order forward-backward Butterworth low-pass filter with a cut-off frequency of 20 Hz. Each sweep was baseline corrected by subtracting the arithmetic mean over the 150 ms pre-stimulus period. An iterative weighted averaging method was used to average all single sweeps per stimulus condition and level for each listener [45]. The weighted average was computed by weighting each single sweep by the inverse power of its noise [46]. Single sweeps which exceeded the artefact rejection threshold of ± 100 μ V in any of the recorded channels were discarded and not included in the average. This resulted in the average AEP including the response to the masker onset.

To obtain the neural response following the signal onset within the masker for each listener, referred to as the AEP change complex, the AEP in the latency interval between 600 and 1050 ms was extracted from the averaged sweeps. Baseline correction was applied considering a 150 ms pre-stimulus period (with respect to the signal onset at 600 ms). The grand mean AEP change complex was computed as an arithmetic mean over all individual AEPs.

In addition, the amplitude components of the AEP change complex were evaluated individually for each listener. The change complex can be described by the response extrema N1, a negative deflection measured between 90 and 190 ms, and P2, a positive deflection measured between 180 and 290 ms (with respect to the signal onset). Peak amplitudes for the N1 and P2 components were extracted for the electrode placed at the vertex (Cz), individually for each listener. Electrode Cz was used since it showed the largest response averaged across all conditions. Peak amplitudes were extracted separately for each stimulus condition and level, using a semi-automatic procedure including identification of N1 and P2 components by a peak-scan algorithm and subsequent verification by visual inspection of all waveforms. The algorithm located minima and maxima in the time windows defined for N1 and P2, respectively. The peaks were indicated automatically if the first derivative of the potential showed a zero-crossing and had a change in sign within the time window. If multiple extrema were found, the algorithm selected the ones with the largest amplitude. If an extremum with the wrong polarity or no response maximum was found by the algorithm, peaks were selected manually by requiring a clear peak within the time window with correct curvature.

The behavioral salience data were analyzed in MATLAB using a non-parametric Friedman test. The effects of level and stimulus condition on the rated signal salience were tested. The analysis was based on median salience ratings across all listeners. Since no interaction effects can be tested using the Friedman test, two separate tests were conducted. To test the effects of level, the data obtained at the different levels were arranged in columns and the stimulus conditions were represented along the rows of the data matrix. To test the effects of stimulus condition, the matrix was transposed before testing.

Results & discussion

Experiment 1: Masked signal detection thresholds in noise

Masked thresholds for the eight individual listeners as a function of the signal IPD are shown in (Fig 1A–1H). The error bars in each panel indicate the standard deviations of the thresholds. The bottom right panel shows the grand average thresholds across the listeners. The results are shown for the UN masker (squares), the CM masker (triangles), and the BB masker (circles). For all masker types, the thresholds obtained in the dichotic conditions (150 degree IPD) were lower than those obtained in the diotic conditions (0 degree IPD), reflecting a BMLD. All listeners, except for the one represented in panel A, showed a decrease in threshold when the masker envelope across frequency was changed from being uncorrelated (UN masker) to comodulated (CM masker), reflecting a CMR effect. This was the case in both binaural conditions. For listener A, the difference in masked threshold between the UN and the CM maskers, i.e., the effect of CMR, nearly vanished in the dichotic condition. The thresholds obtained with the signal presented in the BB masker were similar to those obtained with the UN masker, except for listener A, who showed a considerably lower threshold for the BB masker in the diotic condition than all other listeners. The amount of BMLD obtained for the different masker types differed across the listeners. The BMLD ranged from 8.7 dB (listener H) to 20.4 dB (listener A) for the UN masker, from 7.4 dB (listener H) to 14.6 dB (listener F) for the CM masker, and from 8 dB (listener A) to 13 dB (listeners B and D) for the BB masker. The amount of CMR decreased with increasing IPD for half of the listeners (A, C, D, and E). Three listeners

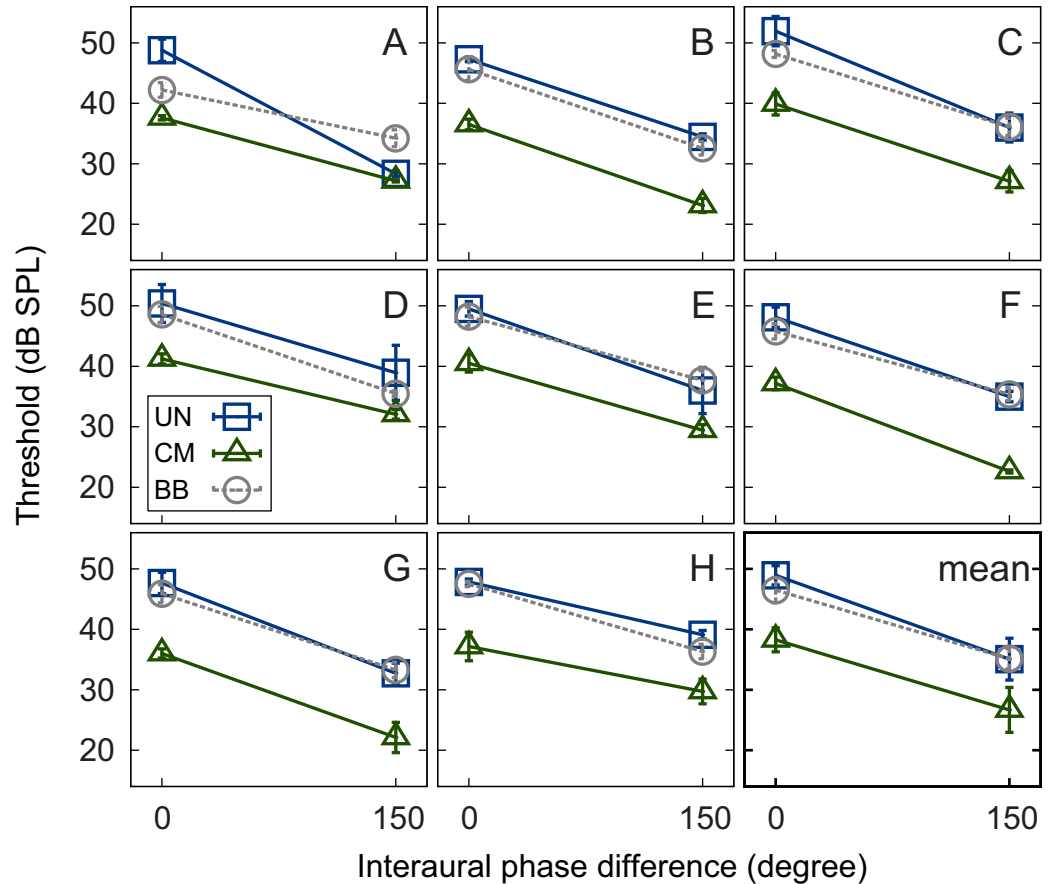


Fig 1. Mean thresholds. Individual mean thresholds of the listeners (panels A-H) and grand average thresholds across all listeners (bottom right panel) as a function of signal IPD. Thresholds are plotted for UN (squares), CM (triangles), and BB (circles) maskers. Error bars indicate plus-minus one standard deviation.

<https://doi.org/10.1371/journal.pone.0222804.g001>

(B, G, and H) showed roughly the same amount of CMR for the two signal IPDs; listener F showed a larger CMR in the dichotic condition compared to the diotic condition. The diotic CMR varied from 9 dB (listener E) to 12 dB (listener C) and the dichotic CMR varied from 1.2 dB (listener A) to 12.4 dB (listener F).

Regarding the average data, a benefit was observed by introducing masker comodulation (yielding CMR), a signal IPD (yielding BMLD), or a combination of both. The thresholds were largest for UN₀ (48.9 dB) and smallest for CM₁₅₀ (26.7 dB). CMR reached a magnitude of 10.7 dB in the diotic condition and decreased to 8.4 dB in the dichotic condition. Thresholds were lower in the dichotic conditions than in the diotic conditions, demonstrating a BMLD of 13.9 dB in the case of the UN masker and approximately 11.5 dB in the cases of the CM and BB maskers.

The data are consistent with findings reported in the literature [12,15,36]. Interestingly, also in Epp and Verhey [12] and Hall et al. [15], a few listeners showed a strong reduction of CMR in the dichotic relative to the diotic condition in combination with large BMLDs, whereas the majority of the listeners showed a smaller BMLD and a comparable CMR in the diotic and dichotic conditions.

When comparing the thresholds for the BB and the UN maskers, the data show that most listeners have a slightly lower threshold for the BB masker than for the UN masker in the diotic

condition. One reason for this difference might be a poor estimate of auditory filter bandwidth at the signal frequency. This estimate was used to select the power spectral density of the BB masker such that it results in the same masker energy in that filter compared to the UN and CM conditions. When focusing on the BMLD, the mean difference between BMLD obtained with the BB versus obtained with the UN masker is about 3 dB. This finding indicates that the BMLD is hardly affected by the spectral gaps in the masker used in the flanking-band paradigm of the present study. Therefore, the magnitude of the BMLD found with the UN and CM maskers in the present study can, although with some caution, be compared to BMLD studies using a continuous band of noise.

Experiment 2: Auditory-evoked potentials to tones in conditions of masking release

Fig 2 shows the grand mean AEPs across all listeners, for the latency interval of 550 to 950 ms relative to the stimulus onset, i.e., the interval associated with the AEP change complex. The three panels illustrate the results obtained with the diotic signals (solid lines) and the dichotic signals (dashed lines) in the presence of the UN masker (left panel), the CM masker (middle panel), and the BB masker (right panel), respectively. The ordinate represents different levels of the signal above the individual listeners' masked thresholds. Independent of the masker condition (UN, CM, and BB) and the binaural condition (0 versus 150 degree IPD), the magnitude of the AEP change complex increased with increasing signal level relative to masked threshold (bottom to top in Fig 2). This is consistent with the initial hypothesis of this study that a higher signal level above masked threshold yields a stronger neural response. However, for a given level above masked threshold, the grand mean AEP magnitude was larger in the dichotic (dashed) than in the diotic (solid) conditions. Hence, the grand mean data, when ignoring possible individual differences in latency of the AEP, is at odds with the initial hypothesis of this study that signals presented at equal levels above masked threshold evoke the same P2 magnitude in the AEP, independent of the stimulus condition.

The results shown in Fig 2 are compatible with the data obtained in [47] where AEPs evoked by a diotic or antiphase tone in a broadband masker were measured. In their study, larger responses were found for antiphase than for diotic signals at a fixed level above masked threshold. However, only the N1-P2 peak of the change complex was evaluated and only three listeners were considered. The grand average AEP data show also a similar trend as the results obtained in Epp et al. [36], where larger grand average potentials were obtained for dichotic than for diotic signals. However, in the study by Epp et al. [36], the signal was presented at equal SPLs rather than at equal levels above masked threshold.

The grand average AEPs, however, do not account for individual differences in latency across listeners which might challenge the interpretation of the grand mean AEP. To compensate for individual differences in AEP latency, the peak amplitudes of the change complex were extracted and analyzed individually for each listener. Even though the latency was shown to represent an informative dimension in the evaluation of AEPs [48], this dimension is closely correlated to the amplitude of the change complex component and shows the same or an even larger variability. Fig 3 shows the grand mean of the extracted amplitudes of the first negative deflection (N1, left panel), the second positive deflection (P2, middle panel), and the difference between those two (P2-N1, right panel) as a function of the signal level relative to the individual listeners' masked thresholds. The open symbols represent the stimulus conditions with the diotic signal in the presence of the UN (squares), CM (triangles), and BB (circles) maskers, respectively. The filled symbols represent the corresponding stimulus conditions with the dichotic signal. The magnitude of the N1 (negativity) increased with signal level. For a given

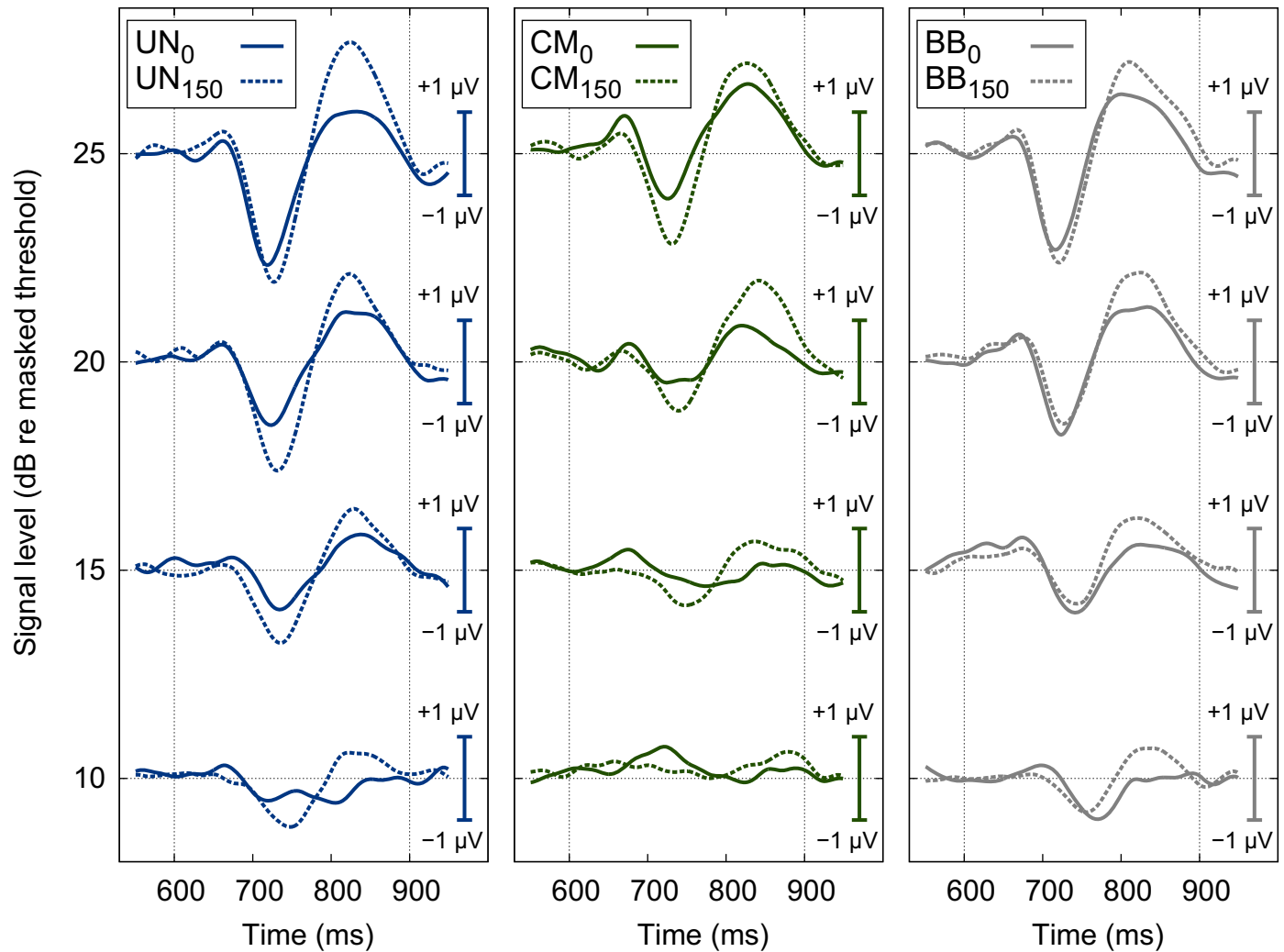


Fig 2. Grand mean AEP. Grand mean evoked potential data for all listeners for a latency interval of 550 to 950 ms relative to the stimulus onset. The three panels illustrate the averaged AEPs measured for diotic (solid lines) and dichotic (dashed lines) signals in the presence of UN (left), CM (middle), and BB (right) maskers. Waveforms are plotted for four different signal levels: 10, 15, 20, and 25 dB relative to masked thresholds (indicated on the y-axes on the left-hand side). The potentials were baseline corrected considering a 150 ms pre-stimulus period (with respect to the signal onset at 600 ms).

<https://doi.org/10.1371/journal.pone.0222804.g002>

level, the mean N1 amplitude varied between 1.1 and 2.2 μV across the stimulus conditions. The magnitude of the P2 (positivity) also increased with signal level but showed a markedly smaller amount of variability (of 0.5 to 1.1 μV) across stimulus conditions than N1. The difference amplitude, P2-N1, often considered in AEP studies, showed variability of up to 3 μV .

The P2 amplitudes for both binaural conditions were found to be similar at equal levels above masked thresholds (Fig 3, middle panel), in agreement with the initial hypothesis of this study. Hence, individual differences in latency resulted in a broadening of the grand mean AEP peaks and therefore in different amplitudes for different conditions in Fig 2. The N1 amplitude (and, hence, the P2-N1 difference) showed a large variability across stimulus conditions and, in contrast to the P2 amplitude, no clear pattern between N1 amplitude and condition was found. Besides a small offset, the data show a very similar trend as the data from [36] (see also S1 Fig). It is interesting to note that the data from [36] were obtained in response to a tone presented at a constant level in dB SPL, the level above masked threshold was modulated

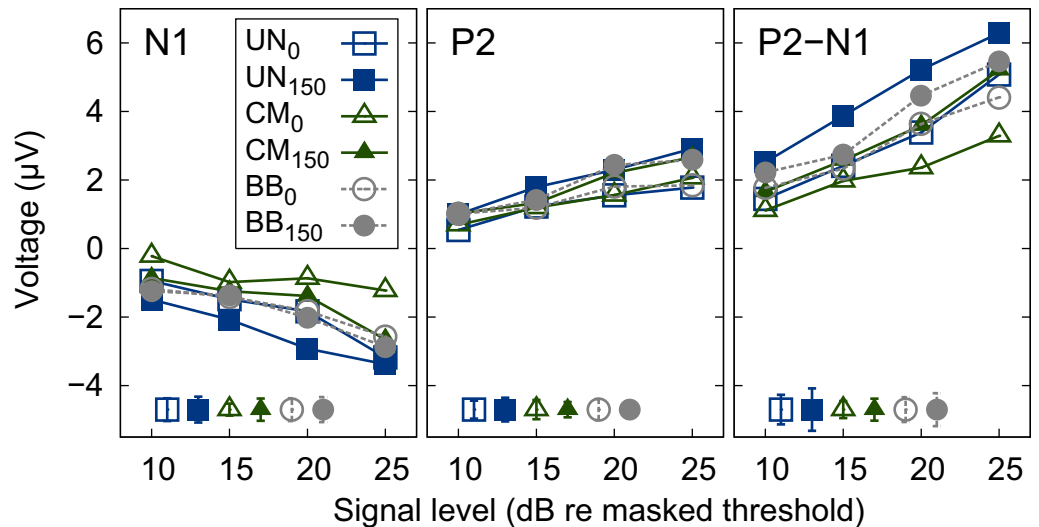


Fig 3. Mean amplitudes of AEP. Grand mean of amplitudes N1 (left panel), P2 (middle panel), and the difference between P2 and N1 (right panel) across all listeners as a function of signal level relative to masked threshold. Amplitudes are shown for diotic (open symbols) and dichotic (filled symbols) signals in the presence of UN (squares), CM (triangles), or BB (circles) maskers. Error bars in the lower, left corner indicate plus-minus one standard error (averaged over all signal levels) for each stimulus condition, respectively.

<https://doi.org/10.1371/journal.pone.0222804.g003>

by the introduction of comodulation and/or IPD. The data were then transformed to the same level axis as the data of the present study. The data of the present study, however, indicate a tendency towards higher P2 amplitudes for dichotic conditions compared to diotic conditions, which is in contradiction to the initial hypothesis. This point may be addressed separately by considering an increased magnitude of BMLD, e.g., by using a single narrow band of noise and then comparing the P2 amplitudes in the presence and absence of an IPD. The small dynamic range tested and shown in the present study does, however, not allow to further clarify this point.

In summary, the present results are in general agreement with the hypothesis that the P2 component of the AEP change complex correlates with the signal level above masked threshold, showing a tendency towards higher amplitudes at higher levels above masked threshold for dichotic conditions. For the levels and the masking conditions investigated, the data indicate that P2 amplitude may represent an objective indicator of the overall perceptual masking release, obtained here with monaural and binaural signal-masker configurations.

Experiment 3: Perceptual salience ratings of tones in conditions of masking release

Panels A-H of Fig 4 show the individual salience ratings of the signal as a function of the signal level relative to the masked threshold. Since the salience scale had fixed endpoints, the data are represented by the median and the corresponding interquartile ranges. The open symbols represent the results for the diotic conditions, whereas the filled symbols indicate the results for the dichotic conditions obtained with the UN masker (squares), the CM masker (triangles), and the BB maskers (circles), respectively. For all listeners, the salience ratings increased with increasing signal level in each stimulus condition. The salience tended to be highest for stimulus conditions without a release from masking (UN₀ and BB₀). Two listeners (F, G) rated the salience of the dichotic tone embedded in the CM masker (CM₁₅₀) clearly lower than in all other stimulus conditions. Some listeners (A, C, D, and H) showed a similar increase in

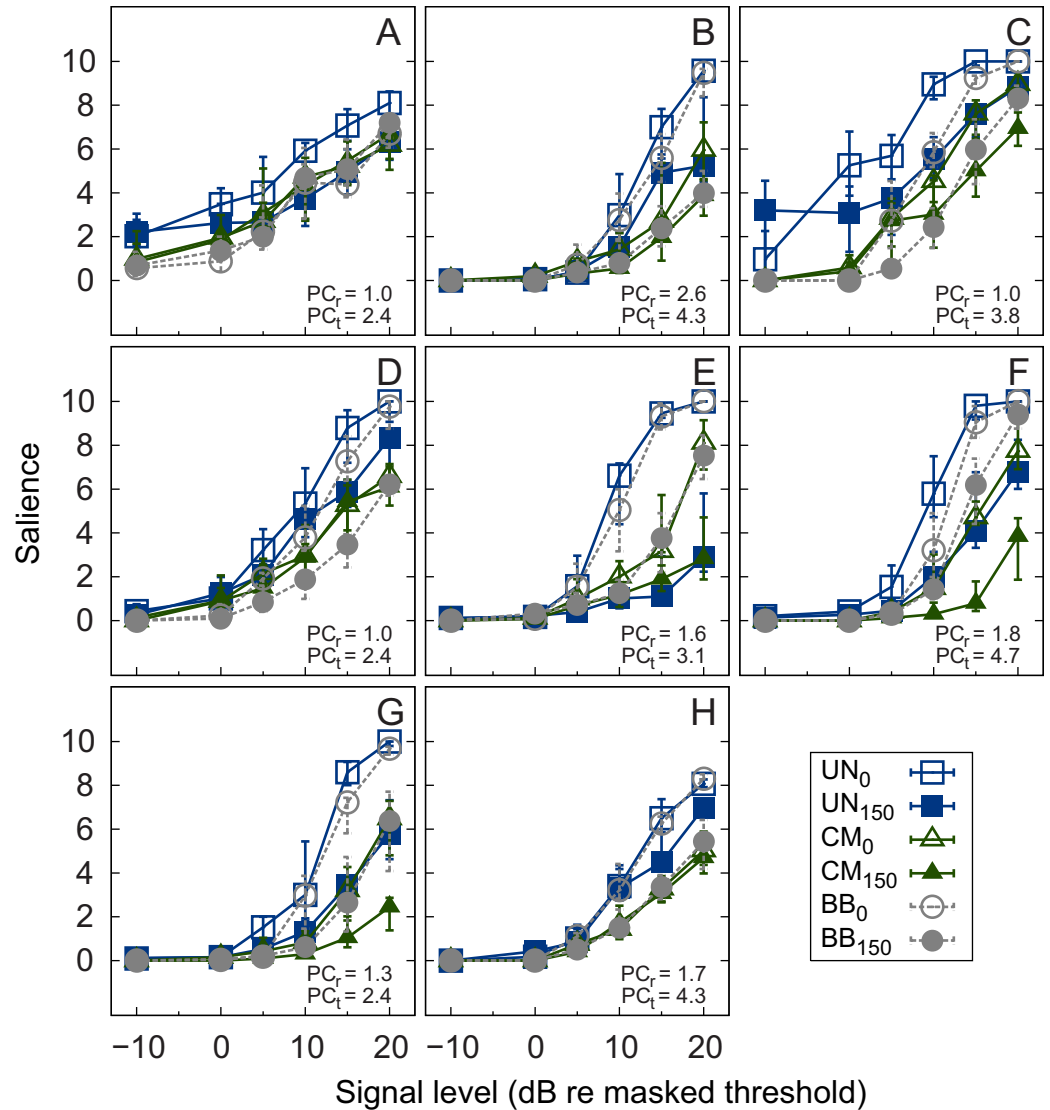


Fig 4. Individual salience ratings. Individual median salience ratings of the individual listeners (panels A-H) as a function of masked threshold. Salience is plotted for diotic (open symbols) and dichotic (filled symbols) signals in the presence of UN (squares), CM (triangles), and BB (circles) maskers. Error bars indicate the interquartile range (panels A-H).

<https://doi.org/10.1371/journal.pone.0222804.g004>

salience with increasing signal level relative to masked threshold, particularly for the CM masker conditions. Other listeners (B, E, F, and G) showed ratings that are ordered according to their physical signal-to-masker level ratio rather than according to the signal level relative to masked threshold. The salience for signals that were presented below masked threshold (i.e., -10 dB SL) nearly vanished for all but listeners A and C.

A non-parametric Friedman test was used on the pooled data to investigate the effects of level and stimulus condition on the rated salience. The test provided a significant main effect of level [$\chi^2(5) = 224.03, p < 0.001$] and of stimulus condition [$\chi^2(5) = 71.03, p < 0.001$]. The significant effect of stimulus condition is contrary to the initial hypothesis of this study that signals at the same level above masked threshold evoke the same perceptual salience for all stimulus conditions.

The variability across listeners observed in these data suggests that different perceptual attributes might have influenced the salience rating. The perception of a tone in the presence of a background noise has been discussed mainly in connection to perceptual attributes like tonality, tonalness, pitch strength, and partial loudness, or in relation to measures of annoyance (for a review, see [49]). Effects of monaural and/or binaural masking releases on the salience of a tone, which might affect the stimuli's tonality or loudness, have received much less attention. The order of the ratings at a given signal level (above threshold) in one of the listener groups (B, E, F, G) suggests that the partial loudness of the signal might have contributed to the judgments, but to which extent and which other perceptual attributes contributed remains unclear.

Relation between auditory evoked potential amplitude and salience rating

The salience ratings increased monotonically with increasing signal level relative to masked threshold. The data clearly show different patterns across the individual listeners. For many listeners both the slope and the magnitude of the salience change with increasing signal level and across the different stimulus conditions. More specifically, there is a clear trend across listeners that the UN masker in the presence of a diotic signal (UN₀, open squares) is rated highest, while the CM masker in the presence of a dichotic signal (CM₁₅₀, filled triangles) is rated lowest. This is not the case for the P2 amplitude in the AEP where the amplitude is very similar across stimulus conditions, with a small tendency of higher amplitudes for dichotic signals (UN₁₅₀ and CM₁₅₀). Hence, no clear connection between the salience ratings, as measured in the present study, and the AEP amplitudes was found.

The observed mismatch between the salience ratings and the electrophysiological responses using the measurement paradigm chosen in the present study may be caused by the dominance of certain perceptual attributes in the salience rating. The individual contributing factors, such as partial loudness or tonalness, would need to be investigated further by isolating them separately in additional perceptual experiments. The variability of the data is consistent with the data of Verhey and Heeren [24]. In that study, the listeners also showed different patterns in loudness scaling in conditions of masking release, even though a single perceptual attribute was specifically targeted. The results were more consistent when using a matching paradigm, indicating that scaling paradigms might be challenging in experiments under conditions of masking release at supra-threshold levels.

An attempt to relate partial loudness to electrophysiological data was made by Rupp et al. [50]. They measured auditory evoked fields (AEFs) in response to stimulation with tone pulses in the presence of Schroeder-phase tone-complex maskers and compared the AEFs with patterns of a loudness experiment obtained with the same listeners. While the tone pulses were kept at a constant sound pressure level, the temporal position of the pulses within the maskers was varied, resulting in varying neuromagnetic response amplitudes and a varying partial loudness of the tone pulses. The behavioral measure in [50] was a two-alternative-forced choice paired-comparison of the stimuli. The paired comparisons were then projected on a perceptual ratio scale using the Bradley-Terry-Luce (BTL) method [51]. Rupp et al. [50] found a correlation between the AEFs and the partial loudness patterns. In particular, in those conditions where the tone pulses were masked more effectively by the tone-complex maskers, the corresponding AEF showed a smaller amplitude than in the conditions where the signal was masked less effectively. The BTL method has also been used to measure other perceptual attributes of sounds like annoyance with subsequent analysis of other contributing factors [52]. Since loudness most likely was a contributing factor to the

perceptual salience of the signal in the present study, a similar approach might help to clarify the observed disparity between AEP amplitude and salience rating.

Summary and conclusions

The present study investigated the neural representation and perceptual salience of tonal signals presented in different noise maskers. The maskers and the target signals were chosen such that they produced different amounts of either monaural masking release (CMR), binaural masking release (BMLD), or a combination of both. The signals were then presented at different levels above their respective masked thresholds. AEPs were considered as an objective indicator of the signal's neural representation in the maskers. It was found that signals presented at equal levels above the listeners' individual masked threshold (but at different physical intensities) resulted in similar amplitudes of the P2 component (but different amplitudes of the N1 component) across various conditions of masking release. This suggests that both monaural and binaural effects of perceptual masking release are represented at the level of the auditory pathway where wave P2 is generated. In contrast to the electrophysiological findings, the subjective ratings of the signal salience showed a significant effect of stimulus condition. Hence, the perceptual salience as considered in the present study did not show a consistent correlation with the corresponding P2 amplitude patterns. The reason for this might be the contribution of several other perceptual cues to the salience ratings, with relative weights that may vary across listeners. Possibly, the partial loudness and the magnitude of tonal content of the supra-threshold tone embedded in the complex masker contributed to the perceived salience of the signal.

Overall, if the correlation of the P2 amplitude of the AEP change complex with the level above masked threshold also holds true for other conditions of masking release and more complex signals like speech, P2 might serve as an indicator of the supra-threshold signal audibility in the presence of a complex masker in various conditions of perceptual masking.

All data are available for download [53].

Supporting information

S1 Fig. Comparison of AEP amplitudes with data from [37]. Same as Fig 3, but with grey lines added to indicate the data from [37]. The data from [37] was measured at a constant level in dB SPL and was transformed to the same level axis as the data of the present study (level above masked threshold). Besides a small offset, the data show very similar trends, indicating the robustness of the measure.

(EPS)

Acknowledgments

We thank all our listeners for their participation in this study. We also thank the editor and the anonymous reviewer for their valuable comments on an earlier version of this manuscript.

Author Contributions

Conceptualization: Katharina Egger, Bastian Epp.

Data curation: Katharina Egger, Bastian Epp.

Formal analysis: Katharina Egger, Bastian Epp.

Investigation: Katharina Egger, Bastian Epp.

Methodology: Katharina Egger, Torsten Dau, Bastian Epp.

Project administration: Bastian Epp.

Resources: Torsten Dau, Bastian Epp.

Software: Katharina Egger, Bastian Epp.

Supervision: Torsten Dau, Bastian Epp.

Validation: Katharina Egger, Bastian Epp.

Visualization: Katharina Egger.

Writing – original draft: Katharina Egger, Bastian Epp.

Writing – review & editing: Katharina Egger, Torsten Dau, Bastian Epp.

References

1. Fletcher H. Auditory Patterns. *Rev Mod Phys.* 1940; 12(1): 47–65.
2. Verhey JL, Pressnitzer D and Winter IM. The psychophysics and physiology of comodulation masking release. *Experimental Brain Research.* 2003; 153(4):405–17. <https://doi.org/10.1007/s00221-003-1607-1> PMID: 13680049
3. Carlyon RP, Buus S and Florentine M. Comodulation masking release for three types of modulator as a function of modulation rate. *Hearing Research* 1989; 42(1):37–45. [https://doi.org/10.1016/0378-5955\(89\)90116-0](https://doi.org/10.1016/0378-5955(89)90116-0) PMID: 2584158
4. Hall JW, Haggard MP and Fernandes M. A., Detection in noise by spectro-temporal pattern analysis, *The Journal of the Acoustical Society of America* 1984; 76(1):50–56. <https://doi.org/10.1121/1.391005> PMID: 6747111
5. Hall JW, Grose JH and Haggard MP. Effects of flanking band proximity, number, and modulation pattern on comodulation masking release. *The Journal of the Acoustical Society of America* 1990; 87(1):269–283. <https://doi.org/10.1121/1.399294> PMID: 2299038
6. Schooneveldt GP and Moore BCJ. Comodulation masking release (CMR): Effects of signal frequency, flanking-band frequency, masker bandwidth, flanking-band level, and monotic versus dichotic presentation of the flanking band. *The Journal of the Acoustical Society of America* 1987; 82(6):1944–1956. <https://doi.org/10.1121/1.395639> PMID: 3429732
7. Jeffress LA, Blodgett HC, Sandel TT and Wood CLI. Masking of tonal signals. *The Journal of the Acoustical Society of America* 1956; 28(3): 416–426.
8. van de Par S and Kohlrausch A. Dependence of binaural masking level differences on center frequency, masker bandwidth, and interaural parameters. *The Journal of the Acoustical Society of America* 1999; 106(4):1940–7.
9. Hirsh I and Pollack I. The role of interaural phase in loudness. *The Journal of the Acoustical Society of America* 1948; 20(6):761–766.
10. Cohen MF and Schubert ED. Comodulation masking release and the masking-level difference. *The Journal of the Acoustical Society of America* 1991; 89(6): 3007–3008. <https://doi.org/10.1121/1.400739> PMID: 1918636
11. Epp B and Verhey JL. Superposition of masking releases. *J Comput Neurosci* 2009; 26(3):393–407. <https://doi.org/10.1007/s10827-008-0118-2> PMID: 19039657
12. Epp B and Verhey JL. Combination of masking releases for different center frequencies and masker amplitude statistics. *The Journal of the Acoustical Society of America* 2009; 126(5): 2479–89. <https://doi.org/10.1121/1.3205404> PMID: 19894828
13. Hall JW, Cokely JA and Grose JH. Combined monaural and binaural masking release. *The Journal of the Acoustical Society of America* 1988; 83:1839–1845. <https://doi.org/10.1121/1.396519> PMID: 3403799
14. Hall JW, Buss E and Grose JH. Binaural comodulation masking release: Effects of masker interaural correlation. *The Journal of the Acoustical Society of America* 2006; 120(6):3878–3888. <https://doi.org/10.1121/1.2357989> PMID: 17225415
15. Hall JW, Buss E and Grose JH. Exploring the additivity of binaural and monaural masking release. *The Journal of the Acoustical Society of America* 2011; 129(4): 2080–7. <https://doi.org/10.1121/1.3562563> PMID: 21476663

16. Festen JM. Contributions of comodulation masking release and temporal resolution to the speech-reception threshold masked by an interfering voice. *The Journal of the Acoustical Society of America* 1993; 94:1295–1300. <https://doi.org/10.1121/1.408156> PMID: 8408970
17. Grose JH and Hall JW. Comodulation masking release for speech stimuli. *The Journal of the Acoustical Society of America* 1992; 91: 1042–1050. <https://doi.org/10.1121/1.402630> PMID: 1556306
18. Kwon BJ. Comodulation masking release in consonant recognition. *The Journal of the Acoustical Society of America* 2002; 112(2): 634–41. <https://doi.org/10.1121/1.1490351> PMID: 12186043
19. Buss E, Grose JH and Hall JW. Frequency discrimination under conditions of comodulation masking release (L). *The Journal of the Acoustical Society of America* 2012; 134(4):2557–2560.
20. Buss E and Hall JW. Effects of masker envelope coherence on intensity discrimination. *The Journal of the Acoustical Society of America* 2009; 126(5):2467–2478. <https://doi.org/10.1121/1.3212944> PMID: 19894827
21. Soderquist RD and Shilling DR. Loudness and the binaural masking level difference. *Bull. Psychon. Soc.* 1990; 28: 553–555.
22. Townsend TH and Goldstein DR. Suprathreshold binaural unmasking. *The Journal of the Acoustical Society of America* 1972; 621–624.
23. Verhey JL and Heise SJ. Suprathreshold Perception of Tonal Components in Noise Under Conditions of Masking Release. *Acta Acustica united with Acustica* 2012; 1–24.
24. Verhey JL, Heeren W. Categorical scaling of partial loudness in a condition of masking release. *The Journal of the Acoustical Society of America*, 2015; 138:904–915 <https://doi.org/10.1121/1.4927415> PMID: 26328706
25. Androulidakis AG and Jones SJ. Detection of signals in modulated and unmodulated noise observed using auditory evoked potentials. *Clin Neurophysiol* 2006; 117(8): 1783–93. <https://doi.org/10.1016/j.clinph.2006.04.011> PMID: 16793334
26. Rupp A, Las L, Nelken I. Neuromagnetic representation of comodulation masking release in the human auditory cortex. In: Kollmeier B, Klump G, Hohmann V, Langemann U, Mauermann M, Uppenkamp S and Verhey JL, editors. *Hearing—From Sensory Processing to Perception*. Berlin, Heidelberg: Springer Berlin Heidelberg; 2007. pp. 125–132.
27. Ernst SMA, Verhey JL and Uppenkamp S., Spatial dissociation of changes of level and signal-to-noise ratio in auditory cortex for tones in noise. *NeuroImage* 2008; 43(2): 321–8. <https://doi.org/10.1016/j.neuroimage.2008.07.046> PMID: 18722535
28. Ernst SMA, Uppenkamp S. and Verhey JL. Cortical representation of release from auditory masking. *NeuroImage* 2010; 49(1):835–42. <https://doi.org/10.1016/j.neuroimage.2009.07.014> PMID: 19616635
29. Fowler C and Mikami C. Phase effects on the middle and late auditory evoked potentials. *Journal of the American Academy of America* 1996; 7:23–30.
30. Ishida IM and Stapells DR. Does the 40-Hz auditory steady-state response show the binaural masking level difference?, *Ear and hearing* 2009; 30(6): 713–5. <https://doi.org/10.1097/AUD.0b013e3181b61cc8> PMID: 19701090
31. Wong WYS and Stapells DR. Brain stem and cortical mechanisms underlying the binaural masking level difference in humans: an auditory steady-state response study. *Ear and hearing* 2004; 25(1):57–67. <https://doi.org/10.1097/01.AUD.0000111257.11898.64> PMID: 14770018
32. Ross B, Fujioka T, Tremblay KL and Picton TW. Aging in binaural hearing begins in mid-life: Evidence from cortical auditory-evoked responses to changes in interaural phase. *J Neurosci* 2007; 27(42): 11172–8. <https://doi.org/10.1523/JNEUROSCI.1813-07.2007> PMID: 17942712
33. Sasaki T, Kawase T, Nakasato N, Kanno A, Ogura M, Tominaga T and Kobayashi T. Neuromagnetic evaluation of binaural unmasking. *NeuroImage* 2005; 25(3): 684–9. <https://doi.org/10.1016/j.neuroimage.2004.11.030> PMID: 15808969
34. Wack DS, Cox JL, Schirda CV, Magnano CR, Sussman JE, Henderson D and Burkard RF. Functional Anatomy of the Masking Level Difference, an fMRI Study. *PLoS ONE* 2012; 7(7): e41263. <https://doi.org/10.1371/journal.pone.0041263> PMID: 22848453
35. Billings CJ, McMillan GP, Penman TM and Gille SM. Predicting perception in noise using cortical auditory evoked potentials. *Journal of the Association for Research in Otolaryngology* 2013; 14:891–903. <https://doi.org/10.1007/s10162-013-0415-y> PMID: 24030818
36. Epp B, Yasin I and Verhey JL. Objective measures of binaural masking level differences and comodulation masking release based on late auditory evoked potentials. *Hearing research* 2013; 306:21–8. <https://doi.org/10.1016/j.heares.2013.08.013> PMID: 24047593
37. Glasberg BR and Moore BCJ. Derivation of auditory filter shapes from notched-noise data. *Hear Res* 1990; 47(1–2):103–38. [https://doi.org/10.1016/0378-5955\(90\)90170-t](https://doi.org/10.1016/0378-5955(90)90170-t) PMID: 2228789

38. Brainard DH. The Psychophysics Toolbox, Spatial Vision, 1997. PMID: [9176952](#)
39. Kleiner DM, Brainard D, Pelli D, Ingling A, Murray R et al. What's new in Psychtoolbox-3. *Perception* 2007; 36(14):1.
40. Jasper HH. The ten twenty electrode system of the international federation. *Electroen Clin Neuro* 1957; 10:append 371–375.
41. Sharbrough F, Chatrian G, Lesser R, Lüders H, Nuwer M and Picton TW. American Electroencephalographic Society guidelines for standard electrode position nomenclature. *J Clin Neurophysiol* 1991; 8(2): 200–202. PMID: [2050819](#)
42. Luck J. *An Introduction to the Event-Related Potential Technique*, 2nd edition MIT press; 2014.
43. Levitt H. Transformed up-down methods in psychoacoustics. *The Journal of the Acoustical society of America* 1971; 11:467–477.
44. Guski R. Psychological Methods for Evaluating Sound Quality and Assessing Acoustic Information. *Acta Acustica united with Acustica* 1997; 38(5):765–774.
45. Riedel H, Granzow M and Kollmeier B. Single-sweep-based methods to improve the quality of auditory brain stem responses Part II: Averaging methods. *Zeitschrift für Audiologie / Audiological Acoustics* 2001; 40(2): 62–85.
46. Hoke M, Ross B, Wickersberg R and Lütkenhöner B. Weighted averaging—theory and application to electric response audiometry. *Electroen Clin Neuro* 1984; 57:484–9.
47. Yonovitz A, Thompson CL and Lozar J. Masking level differences: auditory evoked responses with homophasic and antiphase signal and noise. *Journal of speech and hearing research* 1997; 22(2): 403–11.
48. Billings CJ C. J., Tremblay KL K. L., Stecker GC G. C. and Tolin WM W. M., Human evoked cortical activity to signal-to-noise ratio and absolute signal level. *Hearing research* 2009; 254(1–2):15–24. <https://doi.org/10.1016/j.heares.2009.04.002> PMID: [19364526](#)
49. Hansen H, Verhey JL and Weber R. The Magnitude of Tonal Content. A Review. *Acta Acustica united with Acustica* 2011; 97(3):355–363.
50. Rupp A, Sieroka N, Gutschalk A and Dau T. Representation of Auditory-Filter Phase Characteristics in the Cortex of Human Listeners. *Journal of Neurophysiology* 2008; 99(3):1152–1162. <https://doi.org/10.1152/jn.00778.2007> PMID: [18184891](#)
51. David H. *The Method of Paired Comparisons*. New York: Oxford University Press; 1988.
52. Ellermeier W, Mader M and Daniel P. Scaling the Unpleasantness of Sounds According to the BTL Model: Ratio-Scale Representation and Psychoacoustical Analysis. *Acta Acustica* 2004; 90(1):101–107
53. Egger K, Epp B. Raw data: Supra-threshold perception and neural representation of tones presented in noise in conditions of masking release; 2019 [cited 15 March 2019]. Database: Zenodo [Internet]. Available from: <https://doi.org/10.5281/zenodo.2594667>