



Time Constants and Clustering of Building.

Real, Jaume Palmer; Rasmussen, Christoffer; Leerbeck, Kenneth; Li, Rongling; Jensen, Ole Michael; Wittchen, Kim Bjarne; Madsen, Henrik

Publication date:
2021

Document Version
Publisher's PDF, also known as Version of record

[Link back to DTU Orbit](#)

Citation (APA):
Real, J. P., Rasmussen, C., Leerbeck, K., Li, R., Jensen, O. M., Wittchen, K. B., & Madsen, H. (2021). Time Constants and Clustering of Building. Technical University of Denmark.

General rights

Copyright and moral rights for the publications made accessible in the public portal are retained by the authors and/or other copyright owners and it is a condition of accessing publications that users recognise and abide by the legal requirements associated with these rights.

- Users may download and print one copy of any publication from the public portal for the purpose of private study or research.
- You may not further distribute the material or use it for any profit-making activity or commercial gain
- You may freely distribute the URL identifying the publication in the public portal

If you believe that this document breaches copyright please contact us providing details, and we will remove access to the work immediately and investigate your claim.



Time Constants and Clustering of Building

BY JAUME PALMER REAL¹, CHRISTOFFER RASMUSSEN¹, KENNETH LEERBECK¹, RONGLING LI², OLE MICHAEL JENSEN³, KIM B. WITTCHEN³ and HENRIK MADSEN¹

¹ DTU Compute, Technical University of Denmark, Lyngby, Denmark

² DTU Byg, Technical University of Denmark, Lyngby, Denmark

³ Department of the Built Environment, University of Aalborg, Aalborg, Denmark

Published December 2020



Access to complete document

<https://doi.org/10.1016/j.enbuild.2020.110530>

Introduction

Buildings account for a large portion of the total energy consumption and they might serve as a significant thermal storage capacity that can be advantageous for the future energy grid. To utilise this capacity, it is necessary to characterise the thermal dynamics in buildings. Existing methods often rely on data that is difficult to measure, or models that are case-specific. Thus, it is necessary to find new methods that are more general to be applicable to a larger share of the building stock.

Idea

At night, many variables that add noise to our building models are negligible or directly zero (e.g. solar radiation and occupant activity).

Moreover, when a building uses a *nigh-setback* strategy, the heating is turned off during night hours. In such periods the indoor temperature decays freely.

Then, this decay trend is characteristic from the particular building and can be used as a fingerprint that described heat loss dynamics of the building.

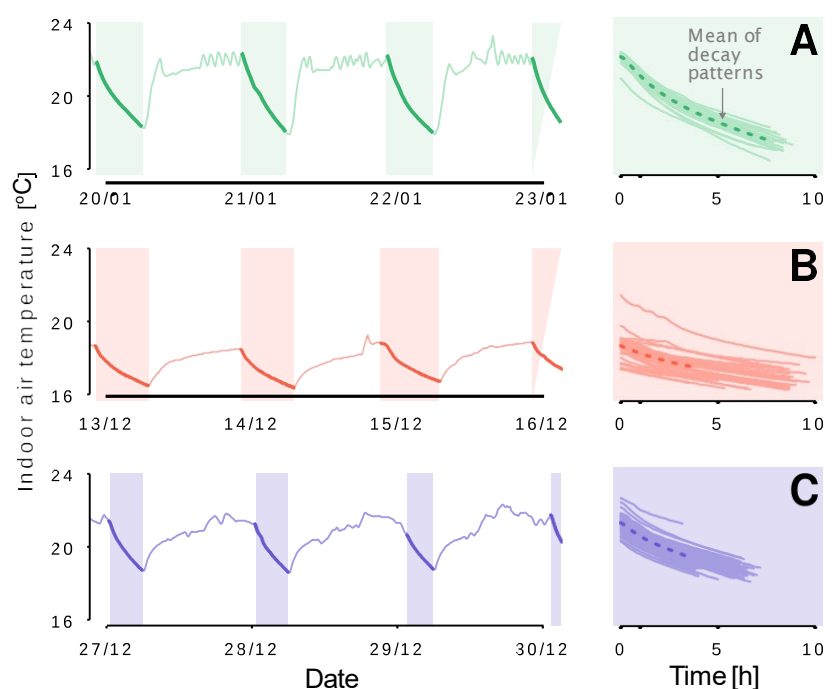


Figure 1. Example of three captured decay patterns for three example buildings: A, B, C

Solution approach

We propose a data-driven method to characterise thermostatically controlled buildings. The method uses Hidden Markov Models to select night data periods with a steady decay of the indoor temperature. Afterwards, a linear model is fitted using the selected night-time data.

Based on this linear system, it is possible to compute two time-constant parameters that characterise the heat-loss dynamics of the building. With these two parameters (τ_1, τ_2) it is possible to cluster and categorise buildings according to their thermal response.

This method uses scarce data that is often easy to measure. Thus, it can be scaled to compare the potential of buildings as thermal storage units.

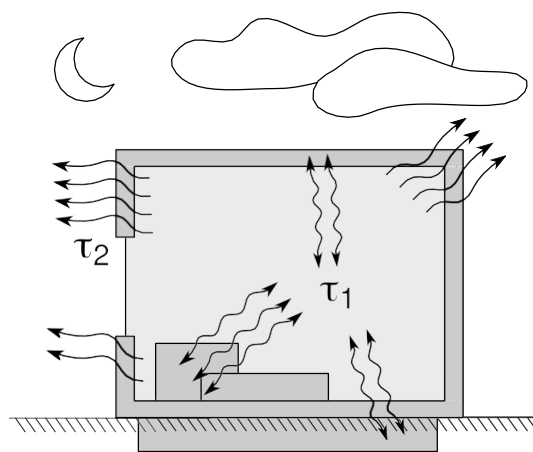


Figure 2. Schematic of the two main heat-loss dynamics inside of a building

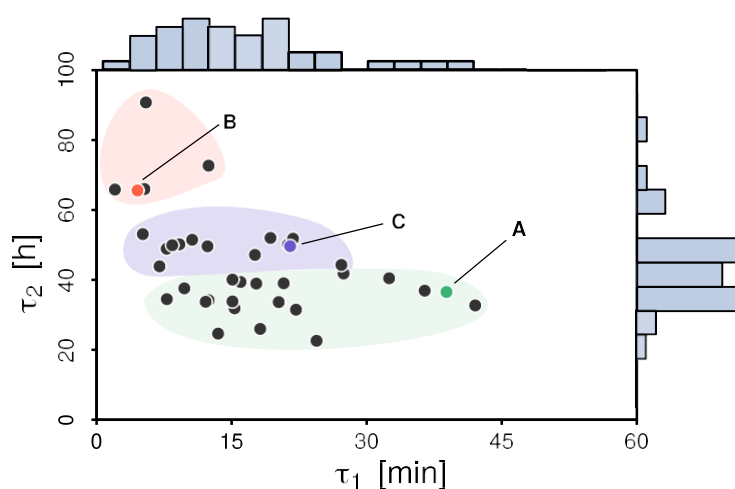


Figure 3. Map of the two time constants for 39 different danish residential buildings

Conclusion

- The results show that it is possible to gain insight about the dynamic thermal response of buildings using accessible limited data
- The obtained characteristics help assessing the potential of a particular building as a flexible thermal storage unit
- This method requires limited resources, it can be used easily for large-scale screenings of buildings to compare their thermal response

Contact

Jaume Palmer Real (jpre@dtu.dk) is a PhD student at DTU Compute

Christoffer Rasmussen (chrras@dtu.dk) is a PostDoc at DTU Compute

Kenneth Leerbeck (kenle@dtu.dk) is a Research Assistant at DTU Compute

Rongling Li (liron@byg.dtu.dk) is an Associate Professor at DTU Byg

Ole Michael Jensen (omrj@build.aau.dk) is a Senior Researcher at the Department of Built Environment at the University of Aalborg

Kim B. Wittchen (kiwi@build.aau.dk) is a Senior Researcher at the Department of Built Environment at the University of Aalborg

Henrik Madsen (hmad@dtu.dk) is a Professor and Section Head at DTU Compute

Acknowledgments: Innovation Fund Denmark. Grant DSF 1305-00027B