



## Seasonality in onshore normalized wind profiles above the surface layer

**Nissen, Jesper Nielsen; Gryning, Sven-Erik**

*Published in:*  
Advances in Science and Research

*Link to article, DOI:*  
[10.5194/asr-4-57-2010](https://doi.org/10.5194/asr-4-57-2010)

*Publication date:*  
2010

*Document Version*  
Publisher's PDF, also known as Version of record

[Link back to DTU Orbit](#)

*Citation (APA):*  
Nissen, J. N., & Gryning, S.-E. (2010). Seasonality in onshore normalized wind profiles above the surface layer. *Advances in Science and Research*, 4, 57-62. <https://doi.org/10.5194/asr-4-57-2010>

---

### General rights

Copyright and moral rights for the publications made accessible in the public portal are retained by the authors and/or other copyright owners and it is a condition of accessing publications that users recognise and abide by the legal requirements associated with these rights.

- Users may download and print one copy of any publication from the public portal for the purpose of private study or research.
- You may not further distribute the material or use it for any profit-making activity or commercial gain
- You may freely distribute the URL identifying the publication in the public portal

If you believe that this document breaches copyright please contact us providing details, and we will remove access to the work immediately and investigate your claim.

# Seasonality in onshore normalized wind profiles above the surface layer

J. N. Nissen and S.-E. Gryning

Risø National Laboratory for Sustainable Energy, Technical University of Denmark, Frederiksborgej 399,  
P.O. Box 49, 4000 Roskilde, Denmark

Received: 14 January 2010 – Revised: 15 March 2010 – Accepted: 24 March 2010 – Published: 12 May 2010

**Abstract.** This work aims to study the seasonal difference in normalized wind speed above the surface layer as it is observed at the 160 m high mast at the coastal site Høvsøre at winds from the sea (westerly).

Normalized and stability averaged wind speeds above the surface layer are observed to be 20 to 50% larger in the winter/spring seasons compared to the summer/autumn seasons at winds from west within the same atmospheric stability class.

A method combining the mesoscale model, COAMPS, and observations of the surface stability of the marine boundary layer is presented. The objective of the method is to reconstruct the seasonal signal in normalized wind speed and identify the physical process behind. The method proved reasonably successful in capturing the relative difference in wind speed between seasons, indicating that the simulated physical processes are likely candidates to the observed seasonal signal in normalized wind speed.

## 1 Introduction

An increasing demand for the ability to estimate the wind climate above the surface layer in coastal regions has been generated by the wind power industry because of the steady increase of modern wind turbines with hub heights well above the surface layer height. To choose the optimal site for a wind turbine, information about the wind energy potential needs to be properly assessed. The wind energy potential is proportional to the cube of the wind speed at hub height, implying that even a small error in estimating the wind speed can have a large impact on the wind energy assessment. Conventional methods for assessing wind speed at heights of up to 200 m, such as that of Troen and Lundtang (1989), are derived from wind measurement taken close to the surface and extrapolated to greater heights by assuming a logarithmic increase of the wind speed with height, with a correction for stability effects. The derivation of the logarithmic wind profile assumes homogeneous surface properties and a constant momentum flux and is therefore confined to the surface layer. Little is known about boundary layer wind profiles above the surface layer, but recent attempts to address this

problem have been put forward by Högström et al. (2006) and Gryning et al. (2007), where extension to the Monin-Obukhov surface similarity scaling is suggested with some success. In a coastal region, the description of the wind profile is however complicated by non-homogenous upstream surface conditions, orography, change of roughness and heat capacity, all of which influence the wind profile and are difficult to describe using simple, universal formulas. An observational study is undertaken in order to quantify the effects on the wind profile from the upstream surface conditions. The observed effects are caused by multiple boundary layer processes at play in the coastal boundary layer and in order to identify the most significant ones, we apply a well-validated mesoscale model in an idealized setup. The selected boundary layer processes in the idealized modelling are kept under easy control and we are therefore able to test the models ability to reproduce the observed wind profile in an idealized atmosphere where only a few boundary layer processes are at play.

## 2 Observations

The observational basis for this work consists of measurements from the Høvsøre National Test Station for Large Wind Turbines situated in the northwestern part of Denmark (Fig. 1). The data is gathered during the period from



Correspondence to: J. Nielsen Nissen  
(jesper.nissen@risoe.dk)



Figure 1. Høvsøre and Horns Rev position.

February 2004 to May 2008 for the onshore wind direction sector  $260^{\circ}$ – $280^{\circ}$ .

Upstream observations of the stability distribution in the marine boundary layer were found to be of importance in describing the seasonal differences in the normalized wind profiles at Høvsøre and measurements from offshore wind park Horns Rev were therefore used. To classify the stability for the Høvsøre observations, the Obukhov length,  $L$ , defined in Eq. (1), is evaluated from the Høvsøre sonic anemometer mounted at 20 m height. The observations are subsequently sorted into 7 stability bins following Gryning et al. (2007) and normalized by the friction velocity at 20 m as defined in Eq. (2) and finally averaged according to season.

$$L = \frac{-u_{*20m}^3}{\kappa(g/T_{20m})(w'T')_{20m}} \quad (1)$$

$\kappa$  = von Karman constant  
 $g$  = Acceleration of gravity  
 $T$  = Temperature

$$u_{*20m}^2 = \left[ \overline{u'w'_{20m}}^2 + \overline{v'w'_{20m}}^2 \right]^{0.5} \quad (2)$$

The results from this procedure can be seen in Fig. 2. It is here observed how the seasons wind speed systematically splits at heights above 40 m. The spring season is always the most windy (except for bin  $-500 < L < -200$  which is poorly represented for the winter season) and the summer is the less windy season. Winter and autumn falls systematically between the spring and summer seasons for all stability bins.

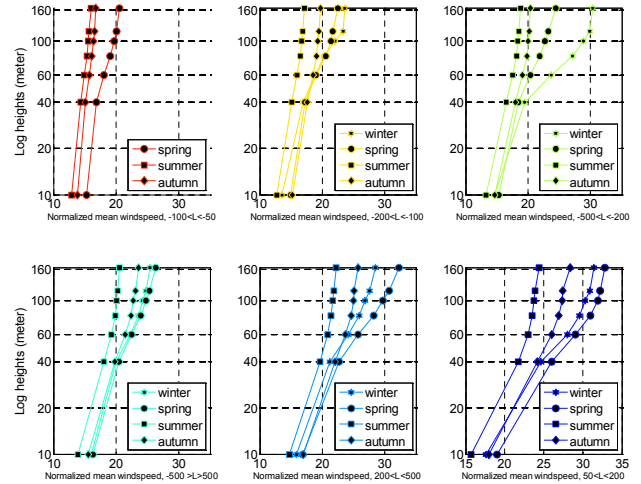


Figure 2. Observed stability-bin-averaged and normalized wind profiles for each season at Høvsøre for the onshore wind direction sector ( $260^{\circ}$ – $280^{\circ}$  degree west.)

### 3 Method and physical process

It was during this work observed, that the annual stability distribution between the coastal station Høvsøre (Fig. 3) and the upstream marine station Horns Rev (Fig. 4) was phase shifted. It is posed here that the associated boundary layer processes from the observed phase shift in annual stability distribution are responsible for the observed seasonal signal in the normalized wind profiles in the following way.

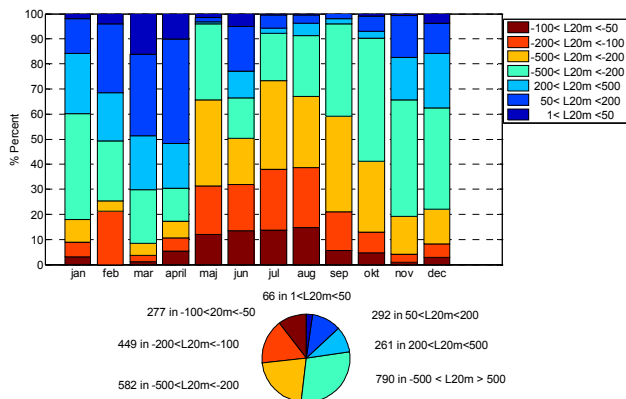
When a majority of observations reflect unstable marine atmospheric boundary layers (hereafter mabl), which is advected over a neutral coastal internal boundary layer (cibl), then the upper normalized wind profile will bend to the left (autumn and summer scenario, neutral case). The opposite will happen when the majority of observations reflect stable mabl's, which are advected over a neutral cibl and make the upper normalized wind profiles bend to the right (spring and winter scenarios, neutral case). The method presented here was designed to test this hypothesis accordingly.

At Horns Rev  $L$  is calculated from the bulk Richardson number, following Grachev and Fairall (1996) in Eqs. (3) and (4) respectively, where  $C_1 = C_2 = 10$  and  $C_3 = 5$ .

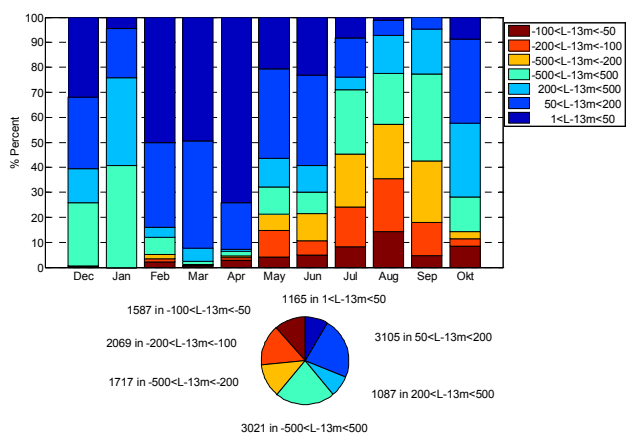
$$Ri_b = \frac{gz(\Delta\theta)_{13m-(-4m)}}{\theta_{13m}u_{15m}^2} \quad (3)$$

$$\begin{aligned} \frac{z}{L} &= C_1 Ri_b && \text{Unstable} \\ \frac{z}{L} &= \frac{C_2 Ri_b}{1 - C_3 Ri_b} && \text{Stable} \end{aligned} \quad (4)$$

Modeling and result: The numerical method consists of 2 sets of simulations, denoted step 1 and step 2, and are conceptually outlined in Fig. 5.



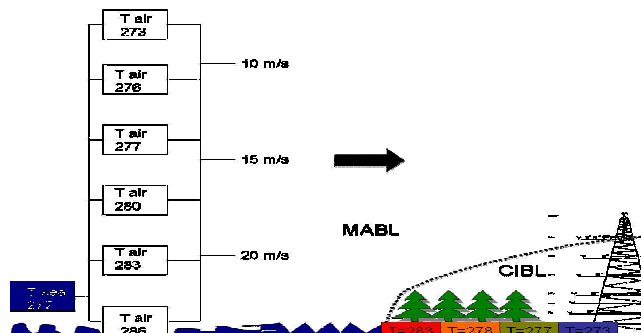
**Figure 3.** Høvsøre test station: monthly stability distribution (bar graph, upper) and yearly distribution of the stability distribution (pie chart, lower). Left hand integers denote number of observation in stability class (legend, lower).



**Figure 4.** Horns Rev wind farm: monthly stability distribution (bar graph, upper) and yearly distribution of the stability distribution (pie chart, lower). Left hand integers denote number of observation in stability class (legend, lower). The data is from the period December 2003 to November 2004, for the 225°–315° wind direction sector.

Step 1. Generation of 18 marine atmospheric boundary layers (mabl).

Procedure: In this step, air is allowed 6 different initial temperatures and is swept across a sea surface, which is kept at temperature 277 K. The initial speed of the wind is varied from 10 m/s over 15 to 20 m/s and is initially constant with height. The marine atmospheric boundary layer is then spun up by the model and profiles of wind and temperature in equilibrium with the sea surface is generated during the 6 h of integration time.



**Figure 5.** Conceptual model of the numerical method.

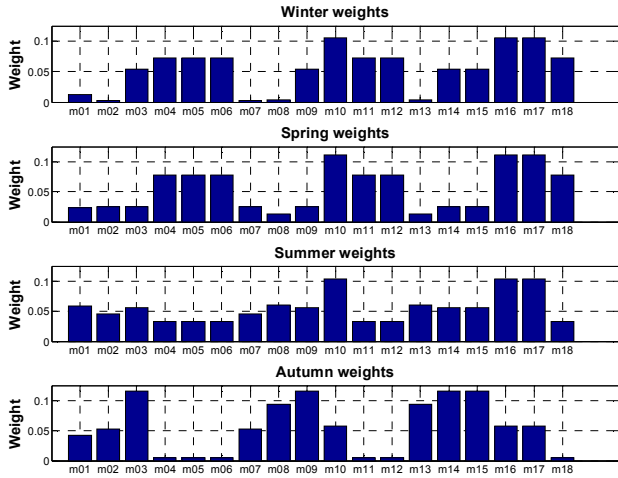
Step 2. Generation of 72 coastal wind profiles.

Procedure: The 18 mabl are hereafter exposed to a cost line with 4 different temperatures. The end result of these two simulation steps is 72 simulations, where wind profiles are extracted from a position in the model domain relating to Høvsøre test station in terms of distance from the coast.

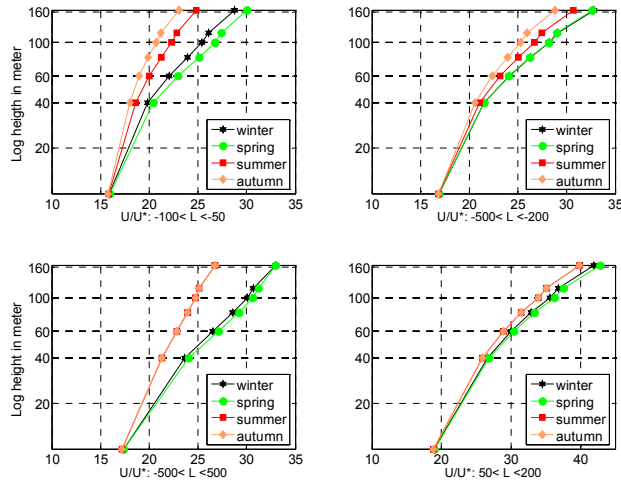
To make the extracted profiles comparable to the normalized and seasonal averaged observations from Høvsøre, an averaging procedure reflecting the particular season is needed. The observed phase shift in annual stability distribution over the North Sea is used to average the profiles in the following way. Each extracted wind profile is assigned a weight for each season reflecting how often the mabl it originates from occurs in that season. The seasonal weights are attained by assuming that a mabl is fully characterised by the computed surface  $L$ . The probability/weight of the mabl in a given season is then the same as the probability of the computed  $L$  to occur in that season divided by the number of simulated mabl with the same  $L$ . The weight of each mabl for each season, depicted in Fig. 6, is then used to average the normalized wind profiles within each stability bin. This result is one wind profiles for each season and stability bin, as depicted in (Fig. 7) which is then immediately comparable to the observed wind profiles from Høvsøre (Fig. 2).

#### 4 Results and conclusions

The observed seasonal pattern as seen in Fig. 2 is to some extent reproduced by the method as seen in Fig. 7. The relatively larger wind speeds observed in spring and winter is clearly detectable in all 4 simulated stability bins. Also the trend towards higher wind speed at the top of the seasonal averaged profile with increasing stability is clearly seen. The height of the equilibrium layer is also seen to be captured quite well to 40 m. The experiment proved skill in predicting the seasonality in the normalized wind profiles for Høvsøre when incorporating information on the upstream stability distribution. Using the time lag in stability distribution in

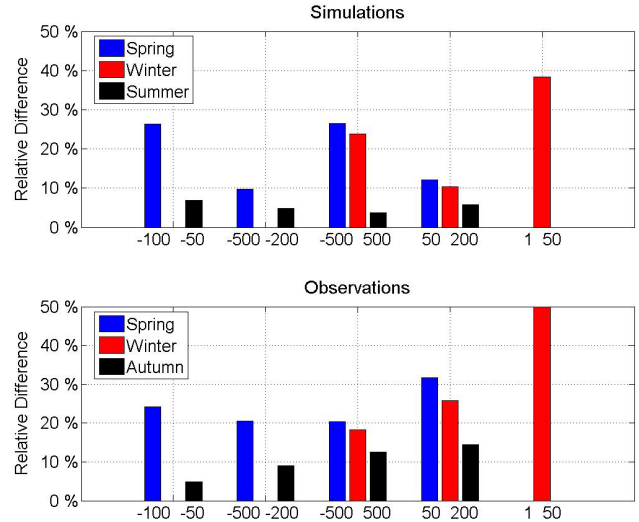


**Figure 6.** Seasonal weights for the generated mabl. The syntax for the mabl is listed in Table A2.



**Figure 7.** Simulated stability-bin-averaged and normalized wind profiles for each season at a position in model domain relating to Høvsøre.

terms of  $L$  between the North Sea and Høvsøre made it possible to partially reproduce the observed seasonality indicating that some of the important physical processes behind the observations are captured in the idealized setup presented here. The observed normalized bin averaged wind profiles are, to a reasonable degree, seen to follow the conceptual model suggested by Sempreviva et al. (1990); Jensen and Peterson (1977). The wind profiles from 100 m and up are characterized by a smaller slope and according to Sempreviva et al. (1990) and Jensen and Peterson (1977) can the smaller slope be interpreted as an equilibrium with the upstream smoother sea surface. This feature is not captured in the numerical setup and the upper part of the simulated bin averaged wind profile is seen to be over predicted for all seasons and bins. The difference between the simulations and



**Figure 8.** Simulated and observed relative difference between seasons at 100 m found according to Eqs. (5) and (6).

$$RD-winter = \frac{[Winter\_Wspd_{100m} - Autumn\_Wspd_{100m}]}{Autumn\_Wspd_{100m}} 100$$

Simulated profiles (5)

$$RD-winter = \frac{[Winter\_Wspd_{100m} - Summer\_Wspd_{100m}]}{Summer\_Wspd_{100m}} 100$$

Observed profiles (6)

the observations for wind speed above 100 m clearly shows that the highly idealized simulations utilities here does not capture correctly the boundary layer processes responsible for the mabl structures over the North Sea, as seen in the observations above 100 m. The most likely explanation for this mismatch between the observations and the simulations is a possible too low simulated height of the averaged upstream constant flux layer. The conceptual model suggested by Sempreviva et al. (1990) and Jensen and Peterson (1977) assumes logarithmic upwind wind profile dictating an upwind average constant flux layer height of at least 160 m in order to diagnose the characteristically kink feature in the wind profile as seen in the observations from Høvsøre.

### 5 Model skills relative comparison

Better agreement between the observations and the simulations is found when comparing the relative differences, denoted RD, calculated as outlined in Eqs. (5), (6) and depicted in Fig. 8. The 100 m height is chosen for a number of reasons. The most important one is that it close to the height of the internal boundary layer at the position of the observations mast and therefore reflects both local and upstream properties.

**Table A1. Model details.**

Grid information		Resolution		Boundary condition
Nr. Horizontal grid points 120 (E–W) 60 (N–S) Step 1 120*60 sea points Step 2: 60*60 land points 60*60 sea points	Vertical 62 levels Top: 3825 m	Horizontal (50*50) m	Vertical: 10 m below 250 m hereafter stretched gradually to 200 m above 1000 m	Step 1: Periodic Step 2 : Western: Rayleigh damping on the inflow Eastern, southern and northern: Radiation condition.
Initial profile		Surface		ABL physics
Profiles of wind speed and temperature extracted from the mabl simulations in step 1 are used as initial profiles in step 2.		Step 1: 120*60 grid points of constant sea roughness = 0.0001 m Step 2: 60*60 grid points of land roughness = 0.01 m 60*60 grid points of constant sea roughness 0.0001 m		No moisture, no radiation PBL scheme: 1.5 order, level 2.5 (Mellor and Yamada, 1982) Surface layer : Louis (1979) Mixing length: Blackadar (1962)

**Table A2. Syntax for the simulated mabl listed in Fig. 6.**

mabl nr	m01	m02	m03	m04	m05	m06	m07	m08	m09
Wspd	10	10	10	10	10	10	15	15	15
Air tmp (K)	273	276	277	280	283	286	273	276	277
mabl nr	m10	m11	m12	m13	m14	m15	m16	m17	m18
Wspd m/s	15	15	15	20	20	20	20	20	20
Airtmp (K)	280	283	286	273	276	277	280	283	286

Good agreement is found between simulations and observations for the most convective bin 1 as seen in Fig. 8. The observed relative difference between the high wind season (winter) and the low wind season (summer) is seen to be 24% while the simulations gave 26%. The same good agreement is evident when comparing the second lowest to the lowest wind season, in the same stability class. Here observations read 4.8% and simulations 7.8%. Similar good agreements are found in the neutral stability class. A general pattern was that we found good agreement for the stability bins with numerous observations and simulations, and not so good agreements were found for the bins with only a few observations and simulations. This is encouraging and indicates that the method captures the relevant physical processes behind the seasonality in the normalized wind profile and we can therefore conclude that the phase shift in annual offshore/onshore stability distribution plays a major role in the observed seasonality in the normalized onshore wind profiles.

## 6 Summary

We can summarize the findings as follows. The observational analysis showed that onshore normalized wind profiles at Høvsøre had a strong seasonal dependence and the modelling strongly indicated that this was caused by boundary layer processes, associated with the offshore/onshore phase shift in annual stability distribution. We expect the seasonality to be present on the entire west coast of Jutland and therefore recommend including offshore stability condition when addressing the wind resource climate at west coast stations in Jutland.

## Appendix A Model details

COAMPS is a finite-difference approximation to the non-hydrostatic fully compressible equations of motion following Klemp and Wilhelmson (1977) with a suite of physical parameterizations of surface fluxes, boundary layer physics and moist processes described in Hodur (1997) and Hodur and Doyle (1998). The physical processes behind the

parameterizations can be switched on and off in order to meet the complexity of the area of interest in the numerical experiment. Below is listed information on the model-setup during simulations carried out in this study.

**Acknowledgements.** This work was supported in part by the Danish Council for Strategic Research sagsnr. 2104-08-0025.

Edited by: A. M. Sempreviva

Reviewed by: two anonymous referees

## References

- Blackadar, A. K.: The vertical distribution of wind and turbulent exchange in a neutral boundary atmosphere, *J. Geophys. Res.*, 67, 3095–3102, 1962.
- Grachev, A. and Fairall, C.: Dependence of the Monin-Obukhov stability parameter on the Bulk Richardson number over the Ocean, *J. Appl. Meteorol.*, 36, 406–414, 1996.
- Gryning, S. E., Batcvarova, E., Brümmner, B., Jørgensen, H. E., and Larsen, S. E.: On the extension of the wind profile over homogeneous terrain beyond the surface layer, *Bound.-Lay. Meteorol.*, 124, 251–268, 2007.
- Hodur, R. M.: The Naval Research Laboratory's coupled Ocean/atmosphere meso scale prediction system (COAMPS), *Mon. Weather Rev.*, 125, 1414–1430, 1997.
- Hodur, R. M. and Doyle, J. D.: The coupled ocean/atmosphere model prediction system COAMPS ". *Coastal ocean predict, Coast. Estuar. Stud.*, 56, 125–155, 1998.
- Högström, U., Smedman, A., and Bergström, H.: Calculation of the wind speed variation with height over the sea, *Wind Engineering*, 30, 269–286, 2006.
- Jensen, N. O. and Peterson, E. W.: Wind flow near the surface of non uniform terrain, Report of progress for the year 1976 Progress report for US army grant available at Risø National Laboratory, 1976.
- Klemp, J. B. and Wilhelmson, R. B.: The simulation of three-dimensional convective storm dynamics, *J. Atmos. Sci.*, 35, 1070–1096, 1977.
- Mellor, G. L. and Yamada, T.: Development of a turbulence closure model for geophysical fluid problems, *Rev. Geophys.*, 20, 851–875, 1982.
- Sempreviva, A. M., Larsen, S. E., Mortensen, N. G., and Troen I.: Response of neutral boundary layers to change in Roughness, *Bound.-Lay. Meteorol.*, 50, 205–226, 1990.
- Troen, I. and Lundtang Petersen, E.: *European Wind Atlas*, Risø National Laboratory, Risø, Denmark, 1989.