



Salmonella genes involved in attachment on carcass surface and pork meat contamination

Riber, Leise

Publication date:
2009

Document Version
Publisher's PDF, also known as Version of record

[Link back to DTU Orbit](#)

Citation (APA):
Riber, L. (2009). *Salmonella genes involved in attachment on carcass surface and pork meat contamination*. Poster session presented at BIOTRACER Dissemination Conference and Third General Meeting, Berlin, Germany.

General rights

Copyright and moral rights for the publications made accessible in the public portal are retained by the authors and/or other copyright owners and it is a condition of accessing publications that users recognise and abide by the legal requirements associated with these rights.

- Users may download and print one copy of any publication from the public portal for the purpose of private study or research.
- You may not further distribute the material or use it for any profit-making activity or commercial gain
- You may freely distribute the URL identifying the publication in the public portal

If you believe that this document breaches copyright please contact us providing details, and we will remove access to the work immediately and investigate your claim.

BACKGROUND

Human infections caused by *Salmonella* from contaminated food is a common problem. Consequently, there is a need for optimizing food production environment in order to reduce any threat to human health caused by the food chain.

AIM

Establish a new approach to identify and use genes of *Salmonella* involved in the attachment on carcass surfaces and in pork chain contamination. With the design of a new meat surface model, we will analyze a number of meat and non-meat isolates for their ability to express the attachment genes. Subsequently, we will look at the

time-course of the expression profile of attachment, virulence and lag-phase genes to see if specific probes can be designed to be used for "early-warning" assays. This may give us an idea of what kind of food products and production environments that facilitate expression of lag-phase genes.

STRATEGY

- Identify genes involved in attachment to meat
- Study the influence of the "history" of *Salmonella* on attachment potential
- Measure the expression of selected genes over time for *Salmonella* on a meat surface

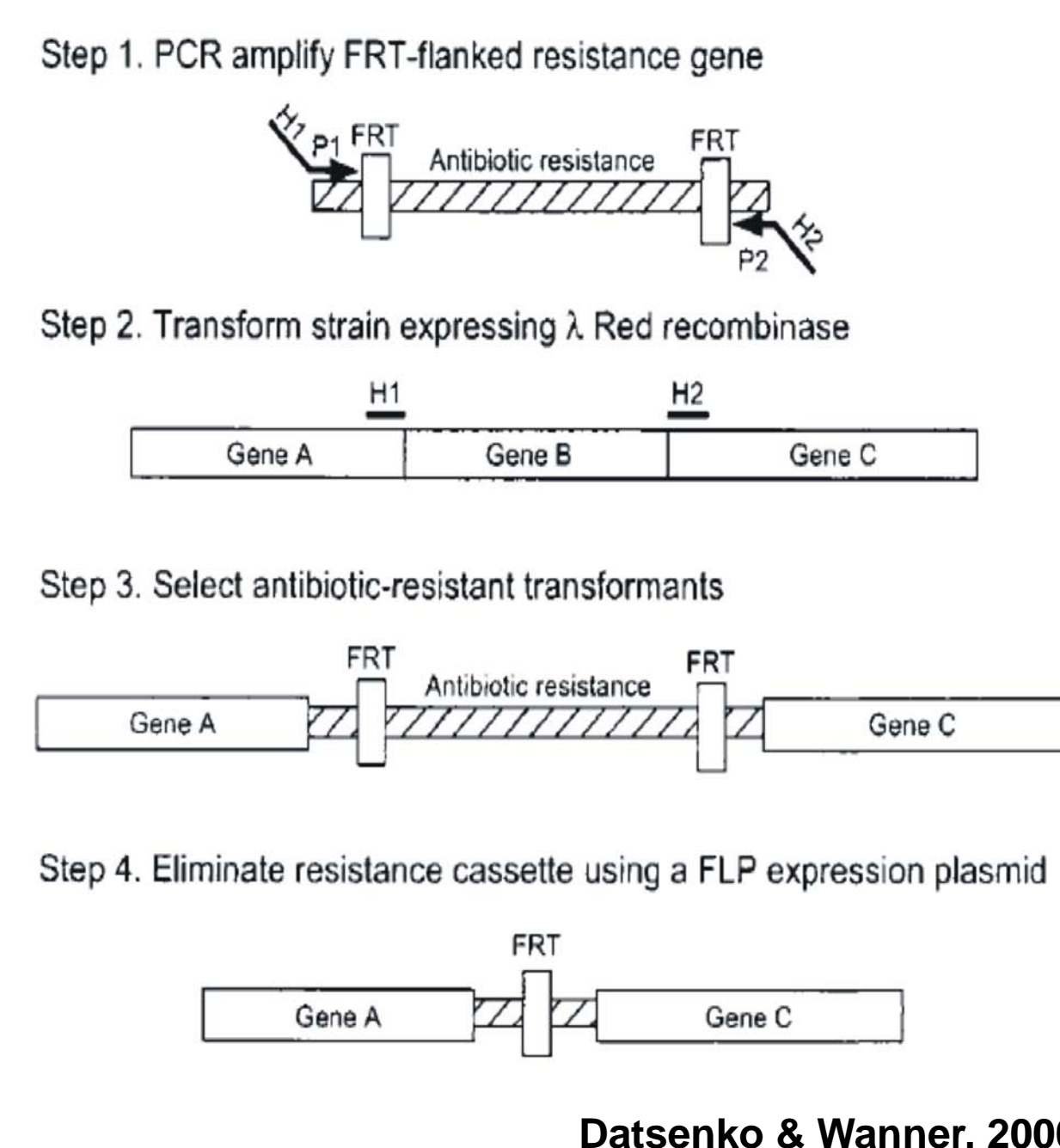
METHODS

1. Identify genes involved in attachment to meat

- Genes are selected from literature studies and expression data from gel cassette system (KU-Life)
- Selected genes:
 - flagellar genes (*fli*, *flj*, *flh*, *flg*, *mot*)
 - fimbriae and curli genes (*agf*, *fim*, *pef*, *lpf*, *std*)
 - genes related to extracellular matrix (*prg*, *bap*, *mis*, *shd*)
 - genes involved in cellulose biosynthesis (*yhj*, *bcs*)

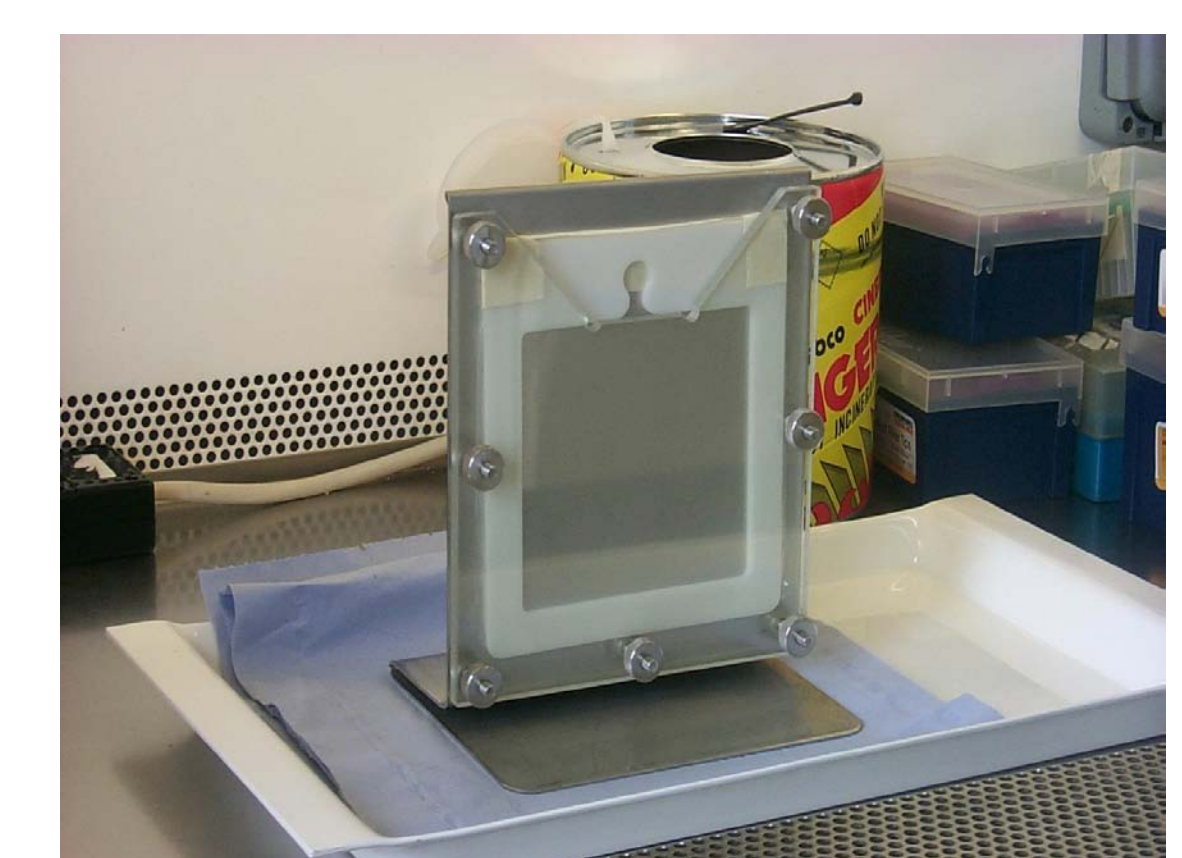
- Knock-out mutants are constructed using lambda red system (Datsenko & Wanner, 2000) and P22 transduction
- Strain: *S. Typhimurium* 4/74

- The ability to attach to meat for mutant cells and wild type cells is compared



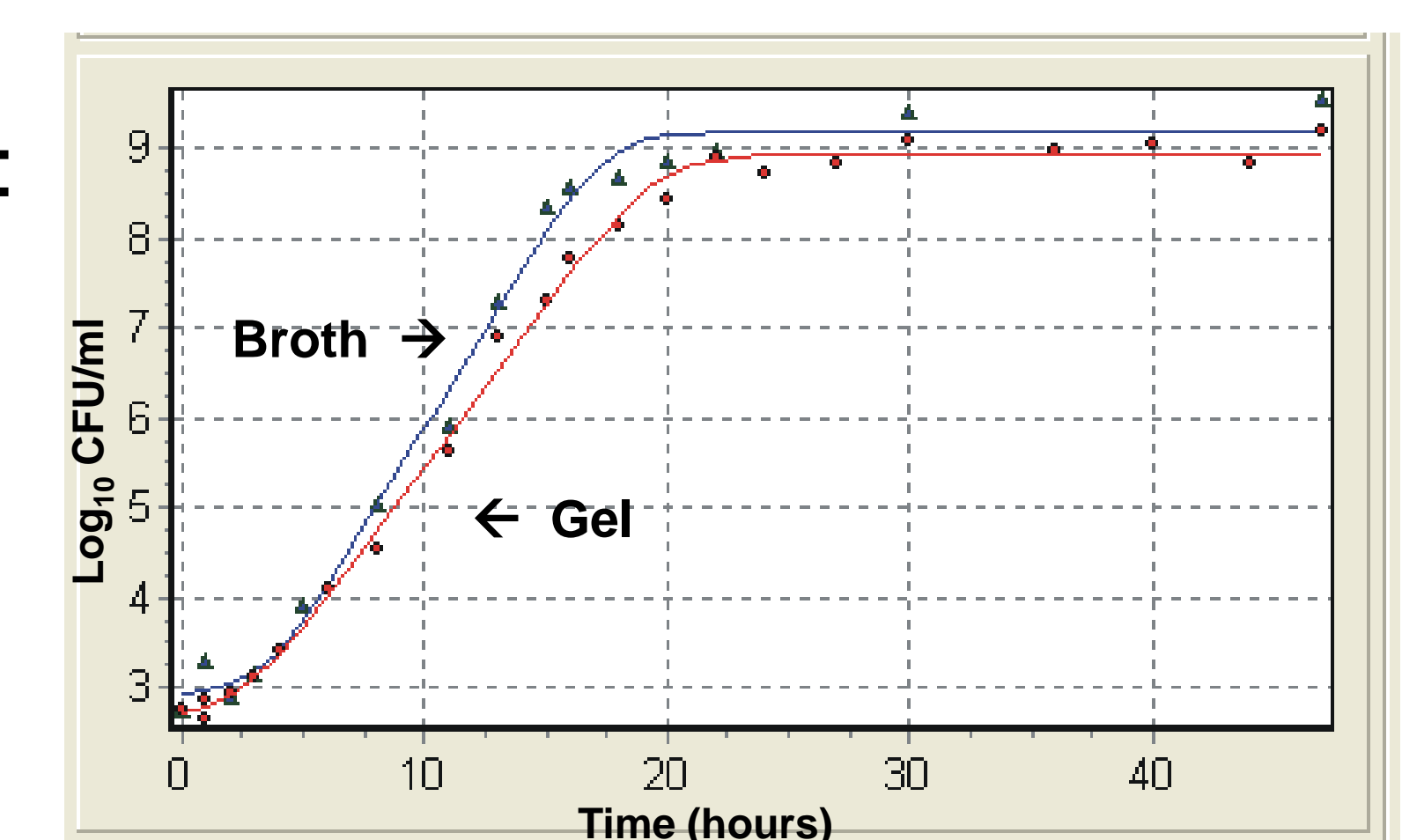
2. Attachment studies – "history of cells"

- Influence of physiological state of *Salmonella* on adhesion is studied:
 - Liquid state – broth
 - Immobilized state – gel cassette
- Gel cassette system developed by IFR (Brocklehurst et al., 1995)



Gel cassette ready for inoculation medium (IFR)

- Growth experiments in broth + gel:
- Temperature: 25 °C
- Medium (gel): LB + 22% pluronic
- Medium (broth): LB

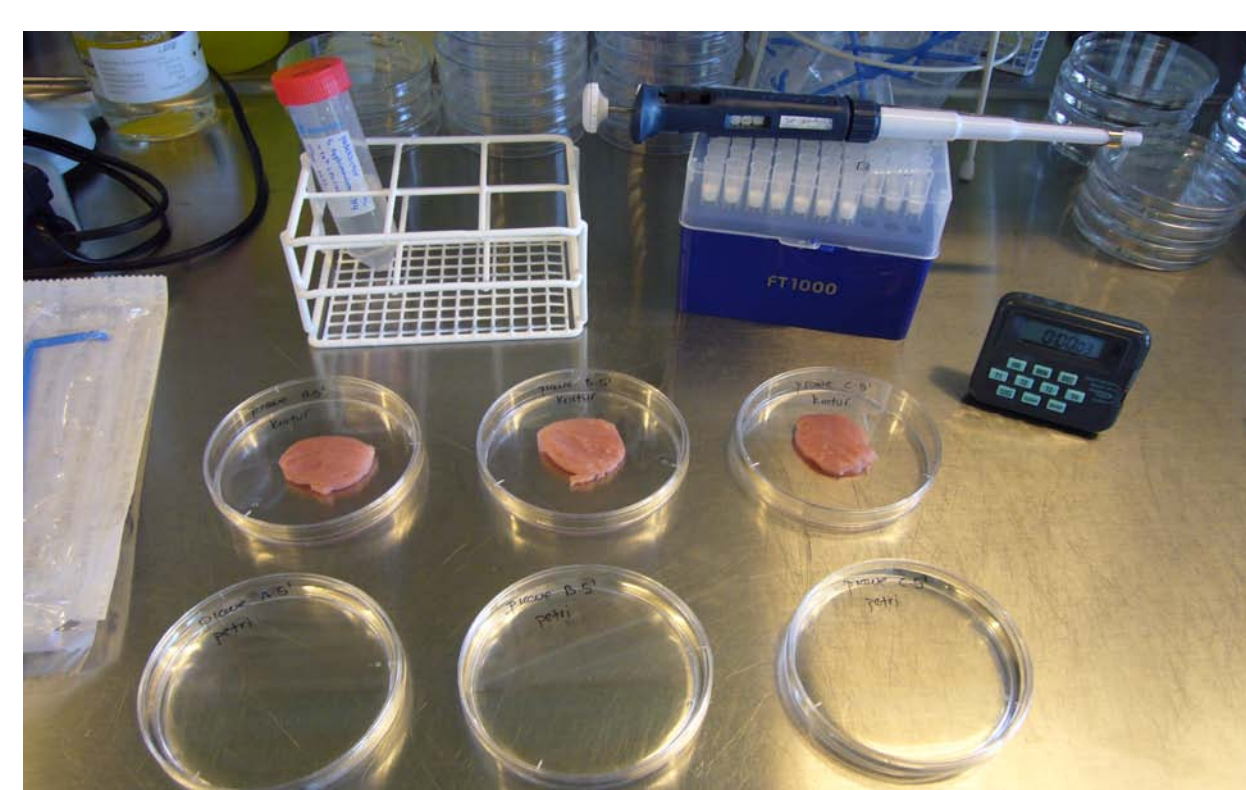


Growth curves for *S. Typhimurium* 4/74

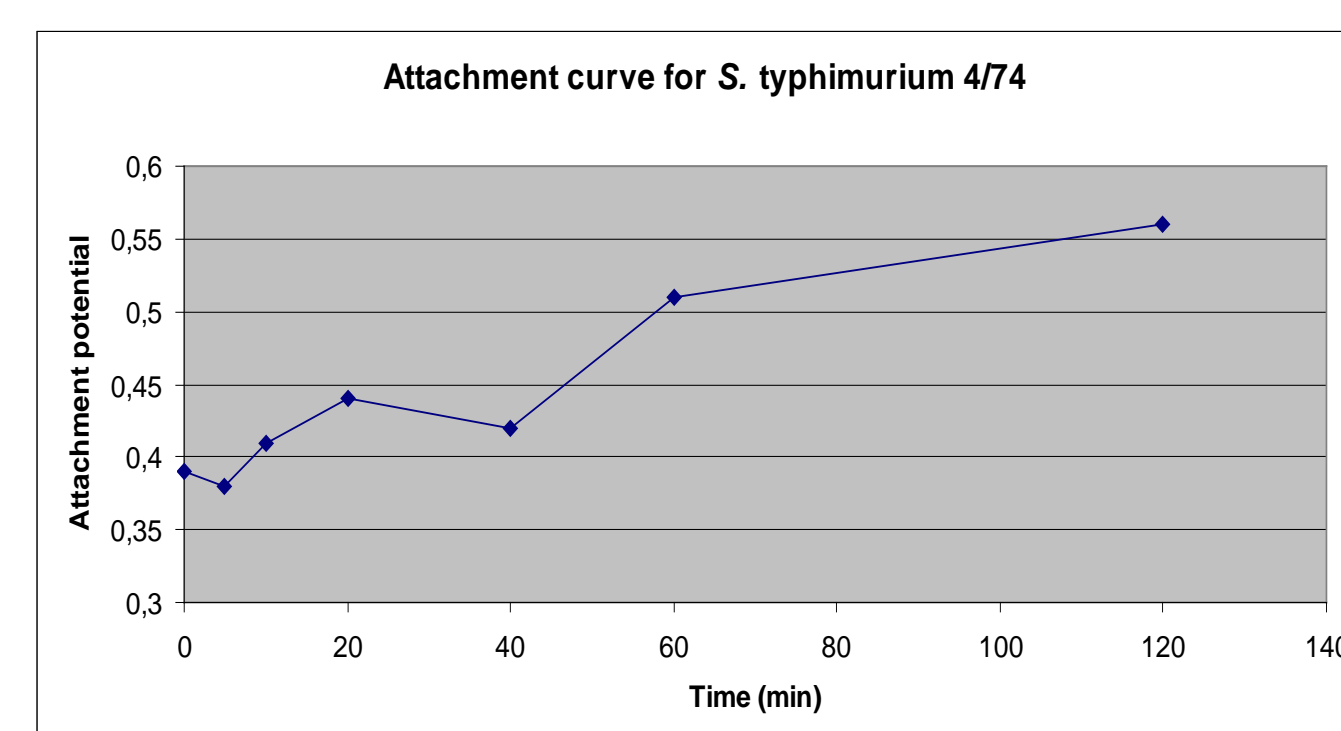
- Directly from broth and gel cassette cells are applied to a meat model at the same inoculation level (~ 10⁸ CFU/ml)

3. Attachment studies – pork meat surface model

Salmonella cells from broth and gel are diluted ten times in sterilized maximum recovery diluent (MRD) and inoculated onto pieces (9.6 cm²) of pork fillets (meat model)



Meat model



Initial test study of attachment potential of *Salmonella* to pork meat

4. Time-course of gene expression on meat

- Isolate RNA from cells strongly attached to meat over time:
 - Qiagen RNeasy mini kit using combined enzymatic lysis and Proteinase K digestion
 - Quality check using Bioanalyzer
 - Conversion of total RNA into cDNA
 - Preparing for expression analysis either by whole genome microarray technology or by quantitative RT-PCR
 - Genes of interest: attachment, virulence and lag-phase

- Optimization needed:
 - Minimize background flora?
 - Increase amount of cells extracted from the meat surface?



Microarray lab at National Food Institute, DTU

Inoculation level (CFU/ml)	Strain	Adhesion time (min)	Temperature	Treatment	Attachment potential
~ 10 ⁷ 500 µl spread on meat surface	<i>S. Typhimurium</i> 4/74: wt vs. mutant gel vs. broth	0, 5, 10, 30, 60, 120	Room temp.	Loosly attached: wash in 40 ml MRD for 1 min Strongly attached: stomach in 40 ml MRD for 1 min	Calculated as: <u>Strongly</u> Strongly+Loosly