



Matrix Assisted Pulsed Laser Evaporation for growth of fullerene thin films

Canulescu, Stela; Schou, Jørgen; Fæster Nielsen, Søren

Publication date:
2011

[Link back to DTU Orbit](#)

Citation (APA):

Canulescu, S., Schou, J., & Fæster Nielsen, S. (2011). *Matrix Assisted Pulsed Laser Evaporation for growth of fullerene thin films*. Abstract from Mediterranean Conference on Innovative Materials and Applications, Beirut, Lebanon. <http://www.cima1.org/>

General rights

Copyright and moral rights for the publications made accessible in the public portal are retained by the authors and/or other copyright owners and it is a condition of accessing publications that users recognise and abide by the legal requirements associated with these rights.

- Users may download and print one copy of any publication from the public portal for the purpose of private study or research.
- You may not further distribute the material or use it for any profit-making activity or commercial gain
- You may freely distribute the URL identifying the publication in the public portal

If you believe that this document breaches copyright please contact us providing details, and we will remove access to the work immediately and investigate your claim.

Matrix Assisted Pulsed Laser Evaporation for growth of fullerene thin films

S. Canulescu^{1,a,*}, J. Schou^{1,b}, and S.F. Nielsen^{2,c}

^(a,b)Department of Photonics Engineering, Risø Campus, Technical University of Denmark, DK-4000 Roskilde, Denmark

^(c)Materials Research Division, Risø National Laboratory for Sustainable Energy, Technical University of Denmark, DK-4000 Roskilde, Denmark

^astec@fotonik.dtu.dk, ^bjosc@fotonik.dtu.dk, ^csfni@risoe.dtu.dk

*Corresponding author

C₆₀ fullerene thin films of average thickness of more than 100 nm can be produced in vacuum by matrix-assisted pulsed laser evaporation (MAPLE). A 355 nm Nd:YAG laser was directed onto a frozen target of anisole with a concentration of 0.67 wt% C₆₀. At laser fluences below 1.5 J/cm², a dominant fraction of the film molecules are C₆₀ transferred to the substrate without any fragmentation. High-resolution SEM images of MAPLE deposited films reveal large circular droplets on the surface with high amount of material concentrated at edges (Fig. 1A). These features, observed over a wide range of laser fluences, are caused by ejection of large matrix-fullerene liquid droplets into the gas-phase and subsequent deposition. At similar laser energies, but using an unfocused laser beam, MAPLE favours evaporation of matrix and organic molecules, resulting in production of films with smooth surfaces and minimal contamination (Fig. 1B).

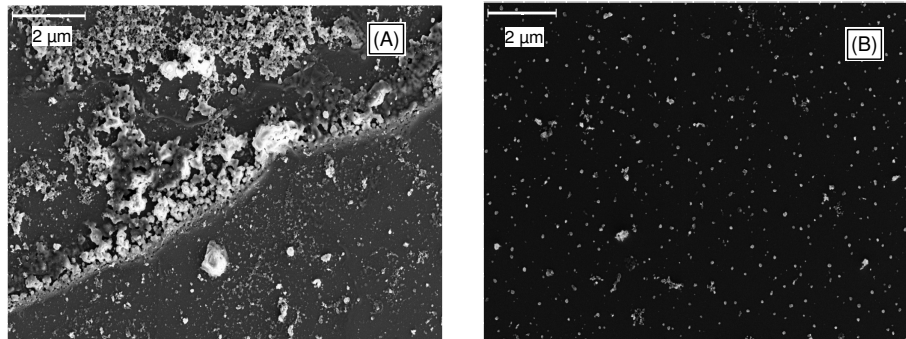


Fig.1 SEM images of MAPLE deposited films of C₆₀. The micrographs show the edge of a droplet observed in rough surfaces (A) and uniform deposition of smooth films (B).