



## Low Carbon Development and Nationally Appropriate Mitigation Actions:2nd Capacity Building Workshop Vietnam

Olsen, Karen Holm

*Publication date:*  
2013

[Link back to DTU Orbit](#)

*Citation (APA):*

Olsen, K. H. (2013). Low Carbon Development and Nationally Appropriate Mitigation Actions:2nd Capacity Building Workshop Vietnam. Sound/Visual production (digital)

---

### General rights

Copyright and moral rights for the publications made accessible in the public portal are retained by the authors and/or other copyright owners and it is a condition of accessing publications that users recognise and abide by the legal requirements associated with these rights.

- Users may download and print one copy of any publication from the public portal for the purpose of private study or research.
- You may not further distribute the material or use it for any profit-making activity or commercial gain
- You may freely distribute the URL identifying the publication in the public portal

If you believe that this document breaches copyright please contact us providing details, and we will remove access to the work immediately and investigate your claim.

2nd Capacity Building Workshop:

**‘Low Carbon Development and  
Nationally Appropriate Mitigation  
Actions’**

*Karen Holm Olsen*

Senior Researcher, UNEP Risø Centre

Do Son, Hai Pong, Vietnam 16-18 December 2013

**Welcome!**



# Objectives and overview of workshop

## Objectives of the workshop:

- To understand the work so far by country team on LCDS and NAMAs and discuss challenges and solutions
- Hear the plans for further work and provide technical guidance on; baselines for LCDS and NAMA scenarios, barrier and solution analysis, operational arrangements

## Overview:

- Low Carbon Development strategy
- Wind NAMA
- Biogas NAMA

# Who are the UNEP Risø Centre?

# UNEP Risø Centre – Energy, Climate and Sustainable Development

International research team of over 45 economists and scientists.

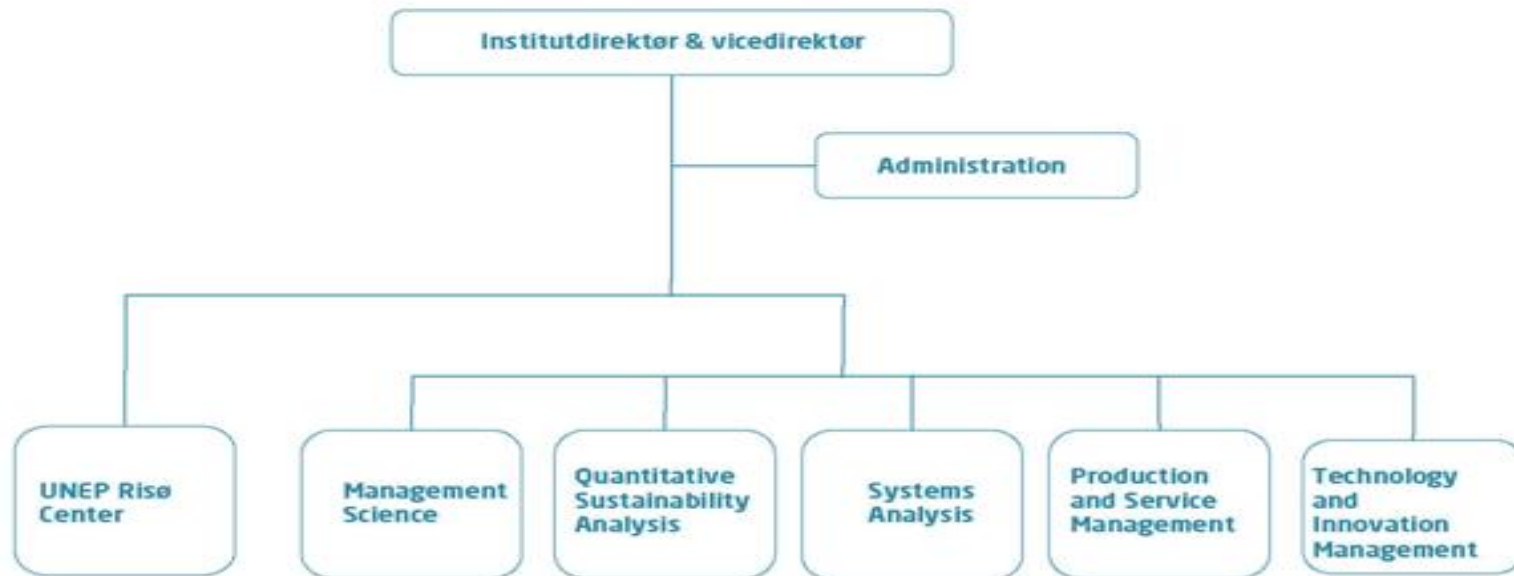
Based on agreement between Risø, UNEP and Danida. Located at Roskilde, Denmark since 1990.

Mandate is to support and promote UNEP activities in the areas of energy and climate change, with a special emphasis on developing countries.



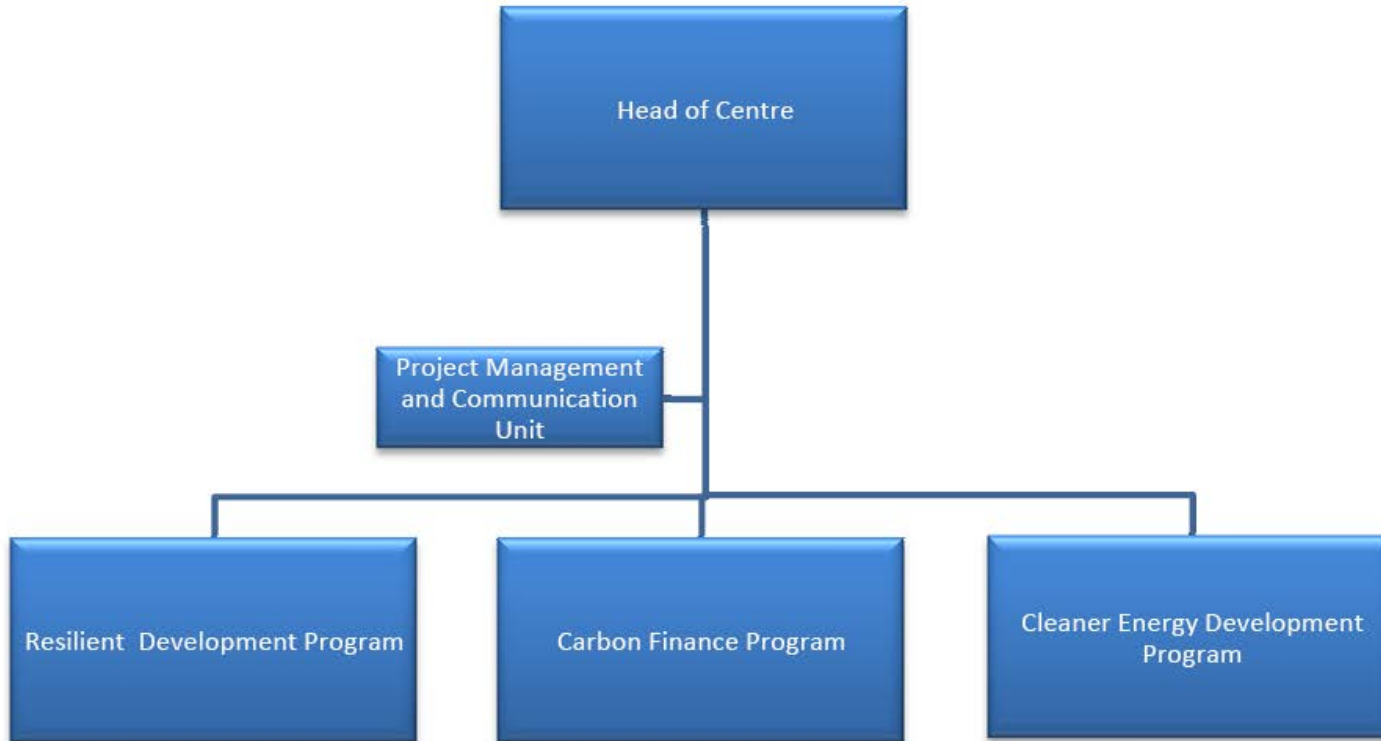
# Part of DTU Management Engineering

## DTU Management Engineering: Head of Department, Administration, UNEP Risø Center and 5 Divisions



© 2011 DTU

# URC Structure



# UNEP and UNEP Risø NAMA related activities

## Projects & Technical Support

- Facilitating Implementation and readiness for Mitigation (FIRM)
- NAMA Development for the Building sector in Asia
- Low Carbon Mobility Plan for three cities in India
- Green Facility – Ghana and Maldives
- Technology Needs Assessment (TNA)
- Regional Gateway for Technology Transfer and Climate Change Action (REGATTA).
- Regional NAMAs studies and NAMAs Prioritisation Framework for Philippines
- National and Sectoral LCDS - Baselines

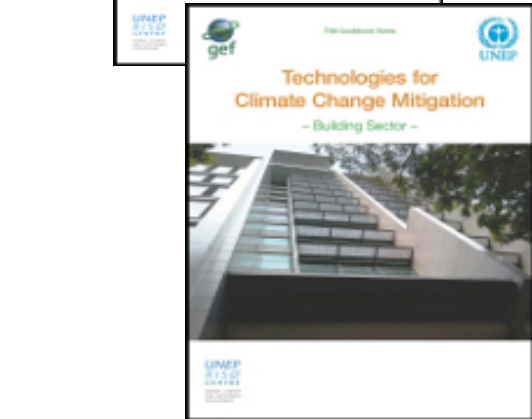
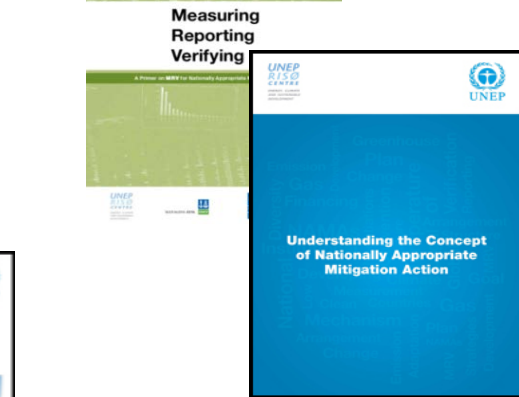
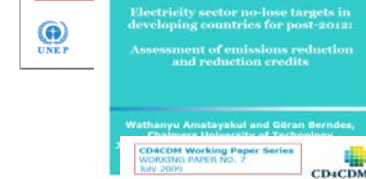
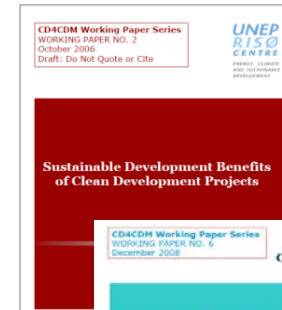
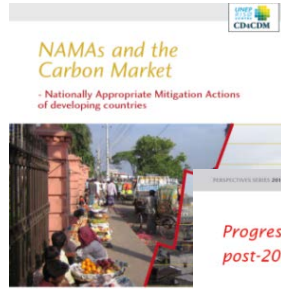
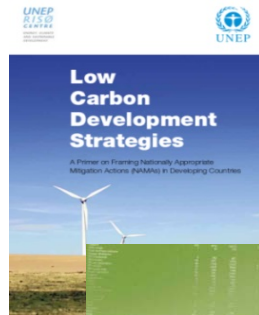
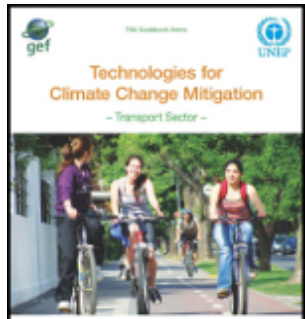
## Institutional Capacity Building & Partnerships

- NAMA Academy
- Individual Coaching for NAMAs to partner countries
- GG/LCD training in the Emirates
- NAMA Partnership & LEDS GP
- Africa & LA Carbon Forums
- Energy Efficiency Hub

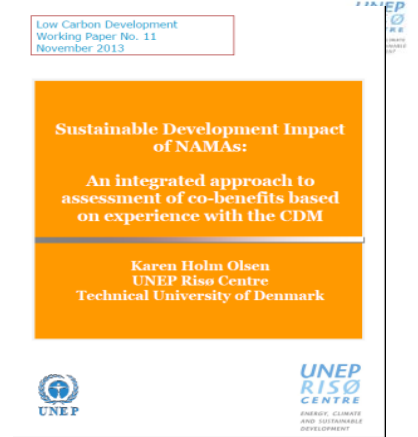
## Analytical work & Publications

- Institutional challenges for NAMAs
- Financial engineering
- Understanding NAMAs
- SD impacts of NAMAs
- MRV of NAMAs
- NAMA Handbook
- NAMA Guidebook for Enlighten





**More information:**  
[www.uneprisoe.org](http://www.uneprisoe.org)  
[www.namapipeline.org](http://www.namapipeline.org)  
[www.lowcarbondev-support.org](http://www.lowcarbondev-support.org)  
[www.tech-action.org](http://www.tech-action.org)  
[www.ggemirates.net](http://www.ggemirates.net)



# Guidance for NAMA Design

UNFCCC with UNEP Risø and UNDP released publication at COP-19, Warsaw.

Find the publication here:

[http://unfccc.int/files/cooperation\\_support/nama/application/pdf/guidance\\_for\\_nama\\_design\\_\(2013\)\\_final.pdf](http://unfccc.int/files/cooperation_support/nama/application/pdf/guidance_for_nama_design_(2013)_final.pdf)

Or here:

<http://www.uneprisoe.org/Newsbase/Nyhed?id=8F3EA191-FF13-40BA-92E7-43DB13C6F7E3>



UNEP  
RISØ  
CENTRE

**GUIDANCE FOR NAMA DESIGN**  
BUILDING ON COUNTRY EXPERIENCES



United Nations  
Framework Convention on  
Climate Change



Empowered lives.  
Resilient nations.



RISØ

# The NAMA partnership

## COP19 – Warsaw

UNEP Risø is leading the WG on SD



# NAMA PARTNERSHIP WEBSITE

## <http://www.namapartnership.org/>

← → ↻ www.namapartnership.org ☆ ☰

Home | Intranet Search


## NAMA PARTNERSHIP

ABOUT WORKING GROUPS PARTNERS PUBLICATIONS LINKS CONTACT

### NAMA Partnership

Developing countries have agreed to prepare and implement nationally appropriate mitigation actions (NAMAs) as a part of their contribution to global mitigation efforts. While initiatives to assist developing countries to prepare and implement NAMAs are scattered, uncoordinated and in short supply; multilateral, bilateral and other organizations are in the process of supporting developing countries with different aspects of mitigation.

In this context, the NAMA Partnership emerges as a group of multilateral organizations, bilateral cooperation agencies and think tanks that have come together to work on Nationally Appropriate Mitigation Actions (NAMAs). The international partnership on NAMAs will focus on information and knowledge sharing to deliver know-how in support of developing countries.



### Areas of Work

The partnership aims to identify best practices and share knowledge to inform the preparation and implementation of NAMAs around three main areas.

The three areas of work are:

- NAMAs in the context of national development
- Preparation and implementation of individual NAMAs in different sectors or technologies
- Finance

### NEWS

**NAMA Partnership side-event at COP 19 in Warsaw, Poland**

Place: The National Stadium, Room 2

Date: 14 November 2013


Time: 13.15 – 14.45

See the agenda for the NAMA Partnership side event [here](#).

**NAMA Partnership Workshop at COP 19 in Warsaw, Poland**

Place: Hyatt Hotel – Topaz Room Meeting, Warsaw

### NAMA PARTNERSHIP FLYER



### WORKING GROUP ACTIVITIES

Access materials from the first brainstorming session of the Working Group on NAMAs and Sustainable Development [here](#).

### NEW PAPER

Linkages between NAMA, LEDS and MRV

### NAMA PARTNERSHIP WIKI

Access the NAMA Partnership Wiki [here](#).

### EVENTS

**UNFCCC regional workshop on promoting international collaboration to facilitate preparation and implementation of NAMAs**

Singapore; 13 - 15 August 2013

**UNFCCC regional workshop on promoting international collaboration to facilitate preparation, submission and**

# NAMA WIKI WEBSITE

<http://namapartnership.wikispaces.com/>

The screenshot shows the NAMA Wiki website interface. At the top left, the logo reads "NAMA Wiki". Below it is a navigation menu with items: Wiki Home, Recent Changes, Pages and Files, Members, and Settings. A search bar is located below the menu. On the left side, there is a "Favorites" section with a star icon, listing categories like HOME, General, Sustainable Development, Measuring Reporting and Verification, Finance, News and events, and Discussion. The main content area features a "home" page with a "Welcome to the NAMA - Wiki!" message. It includes a paragraph explaining the NAMA-Wiki platform, a section for "Areas of discussion" with links to Sustainable development (SD), Measuring, reporting, and verification (MRV), and Finance, and a section for "For Registered Members:" which invites users to explore interactive platforms. At the bottom of the main content area, there is a download link for "NAMA Partnership\_ WikiSpaces Guideli..." with a PDF icon, a "Details" link, and a "Download" button indicating a 2 MB file. The footer of the page displays a row of logos for various organizations, including UNEP RISO CENTRE, FAO, UNDP, unitar, IDB NEFCO, THE WORLD BANK, afc, jica, KFW giz, CLIMATE POLICY INITIATIVE, WORLD RESOURCES INSTITUTE, and CCAP.

## NAMA Wiki

- Wiki Home
  - Recent Changes
  - Pages and Files
  - Members
  - Settings
- 

- Favorites ★
- HOME
- General
- HOME
- What are NAMAs?
- NAMAs in the negotiations
- NAMA registry
- Work with other initiatives
- NAMA training
- Publications
- The NAMA cycle
- Sustainable Development
- SD - Home
- Measuring Reporting and Ver
- MRV - Home
- Finance
- Finance - Home
- News and events
- News
- Events
- Discussion
- Discussion forum

### ★ home

Edit 0 48 ...

#### Welcome to the NAMA - Wiki!

The NAMA-Wiki is a platform created as an initiative of the [NAMA-Partnership](#), open to anyone involved and/or interested to know more about Nationally Appropriate Mitigation Actions (NAMAs). Its aim is to provide access to information that can help gain an understanding of the basic concepts regarding NAMAs, as well as the latest developments within the related fields of sustainable development (SD), measuring, reporting, and verifying (MRV), finance, and the status of the negotiations.

The NAMA-Wiki welcomes and encourages an active participation of users, who can contribute to the content of the website by posting comments, creating discussions and sparking debates, and/or providing relevant information for this knowledge database.

#### Areas of discussion

- [Sustainable development \(SD\)](#)
- [Measuring, reporting, and verification \(MRV\)](#)
- [Finance](#)

#### For Registered Members:

Registered members of the NAMA Partnership WikiSpace are kindly invited to take a look at the links to the Interactive Platforms situated on the left of this webpage, under "All Pages". To view, edit, and interact in a Wiki Page representing a thematic area that you would like to participate in, please follow the instructions provided in these Guidelines:

 [NAMA Partnership\\_ WikiSpaces Guideli...](#)  
[Details](#) [Download](#) 2 MB

Tweets [Follow](#)

 [osec.manila](#) 27 Sep  
[@sec2mayorJEE](#)  
Mayor Estrada and delegation briefed by JICA officials on the



Thanks!