



Estimation of Effect Factors for application to marine eutrophication in LCIA

Cosme, Nuno Miguel Dias; Hauschild, Michael Zwicky

Publication date:
2014

[Link back to DTU Orbit](#)

Citation (APA):

Cosme, N. M. D., & Hauschild, M. Z. (2014). Estimation of Effect Factors for application to marine eutrophication in LCIA. Sound/Visual production (digital), SETAC Europe.

General rights

Copyright and moral rights for the publications made accessible in the public portal are retained by the authors and/or other copyright owners and it is a condition of accessing publications that users recognise and abide by the legal requirements associated with these rights.

- Users may download and print one copy of any publication from the public portal for the purpose of private study or research.
- You may not further distribute the material or use it for any profit-making activity or commercial gain
- You may freely distribute the URL identifying the publication in the public portal

If you believe that this document breaches copyright please contact us providing details, and we will remove access to the work immediately and investigate your claim.

Estimation of Effect Factors for application to marine eutrophication in LCIA



Session: *Advancements in life cycle impact assessment and footprint method development (II)*
Tue May 13th 2014 – Shanghai Room

Nuno Cosme and Michael Z. Hauschild

nmdc@dtu.dk

PhD student

Quantitative Sustainability Assessment
Department of Management Engineering

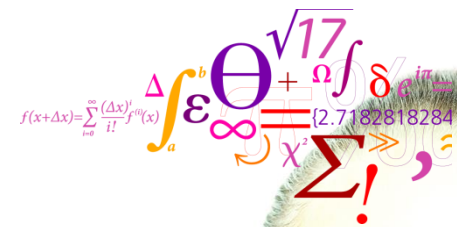


OTTO MØNSTEDS FOND

Meeting participation partly financed by Otto Mønstedts Fond



Research partly financed by the EU LC-IMPACT project: Development and application of environmental Life Cycle Impact assessment Methods for imProved sustAinability Characterisation of Technologies (Grant agreement No.: 243827 – LC-IMPACT) under the 7th FP Environment ENV.2009.3.3.2.1.

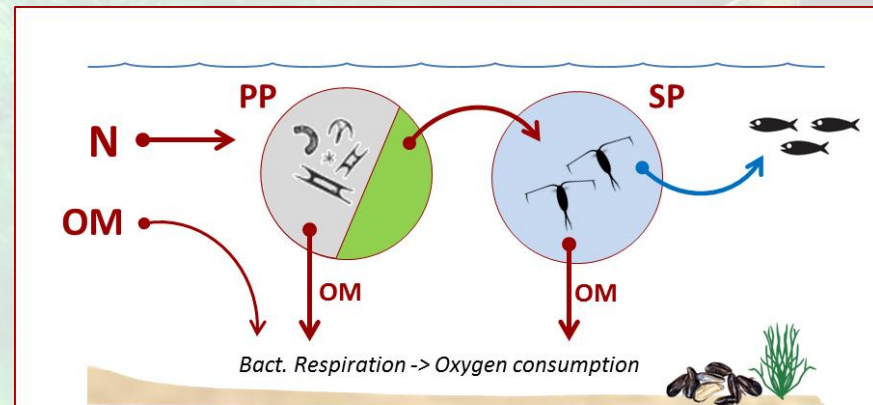


Marine eutrophication

Ecosystem response to an excessive input of nutrients promoting an increase of primary production

Also from emissions of organic matter (e.g. river transport, sewage discharge)

Results in excessive oxygen depletion and impacts on biota, ecosystem and (socio)economy



Characterisation modelling

LCIA -> Characterisation Factors (**CF**) to translate emissions to potential impacts

$$CF = FF * XF * EF$$

Factors:

Fate (FF): how much N available ?

Exposure (XF): how N originates O₂ depletion ?

Effect (EF): benchmarks the impacts of oxygen depletion on biota

Damage dimension: species affected/
disappeared (i.e. loss of biodiversity)



Species sensitivity to hypoxia

The dataset:

PNAS Thresholds of hypoxia for marine biodiversity

Raquel Vaquer-Sunyer* and Carlos M. Duarte

15452-15457 | PNAS | October 7, 2008 | vol. 105 | no. 40

- Data of sublethal threshold concentration (mgO_2/L) for 71 marine species
- 58 relevant species: only benthic, demersal and benthopelagic
- Fish (12), crustaceans (13), molluscs (7), echinoderms (7), annelids (7), cnidarians (11), plants (1)



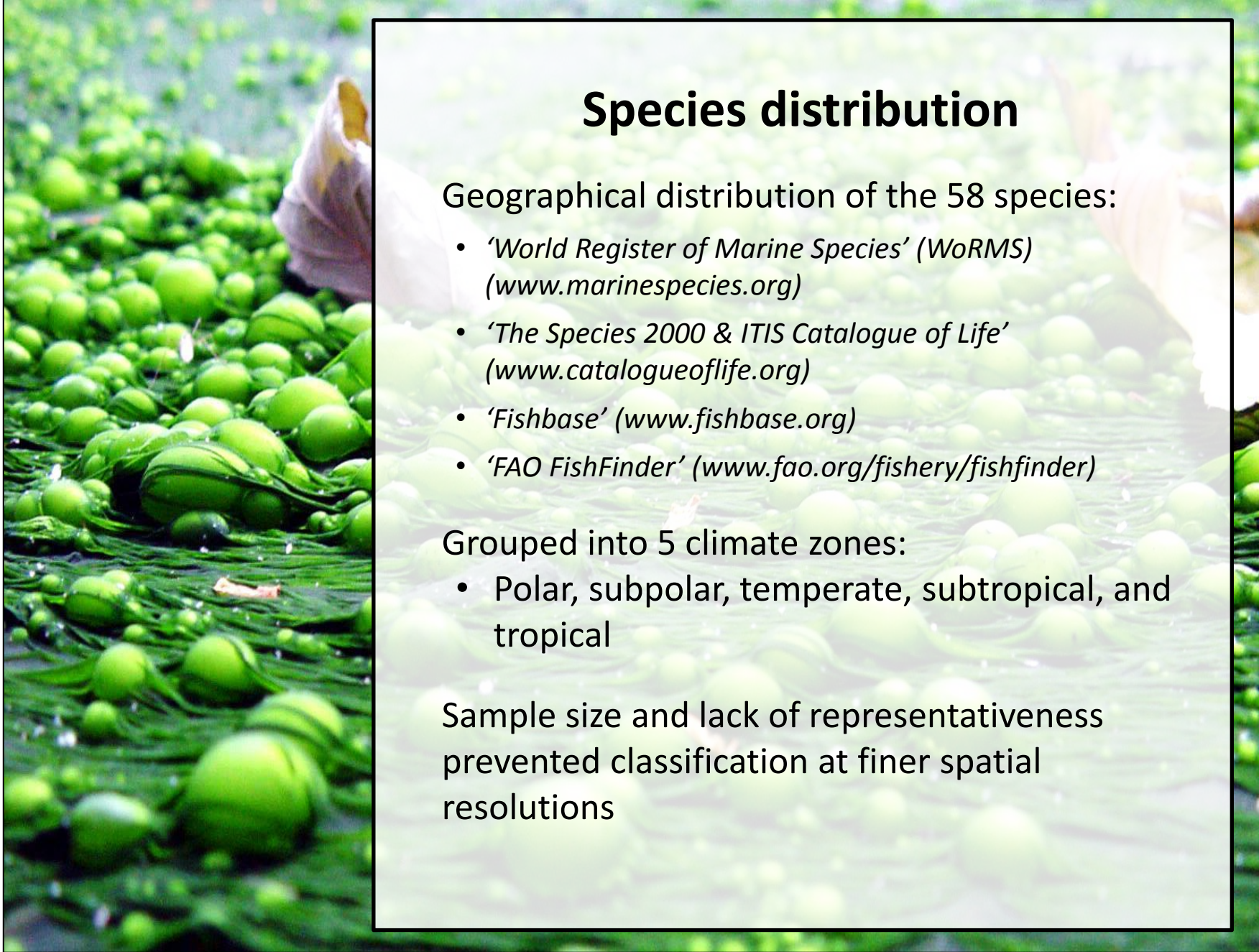
Endpoints tested

Sub-lethal responses:

- **Behavioural** level
(e.g. avoidance strategies)
- **Physiological** level
(e.g. limiting growth, activity and respiration rates)
- *(NOT) Ecological* level
(e.g. altering structure, function, and services of benthic communities)

Sensitivity to dissolved oxygen levels = **LOEL**,
Lowest Observed Effect Level

How to extrapolate individual species
sensitivity to ecosystem's?



Species distribution

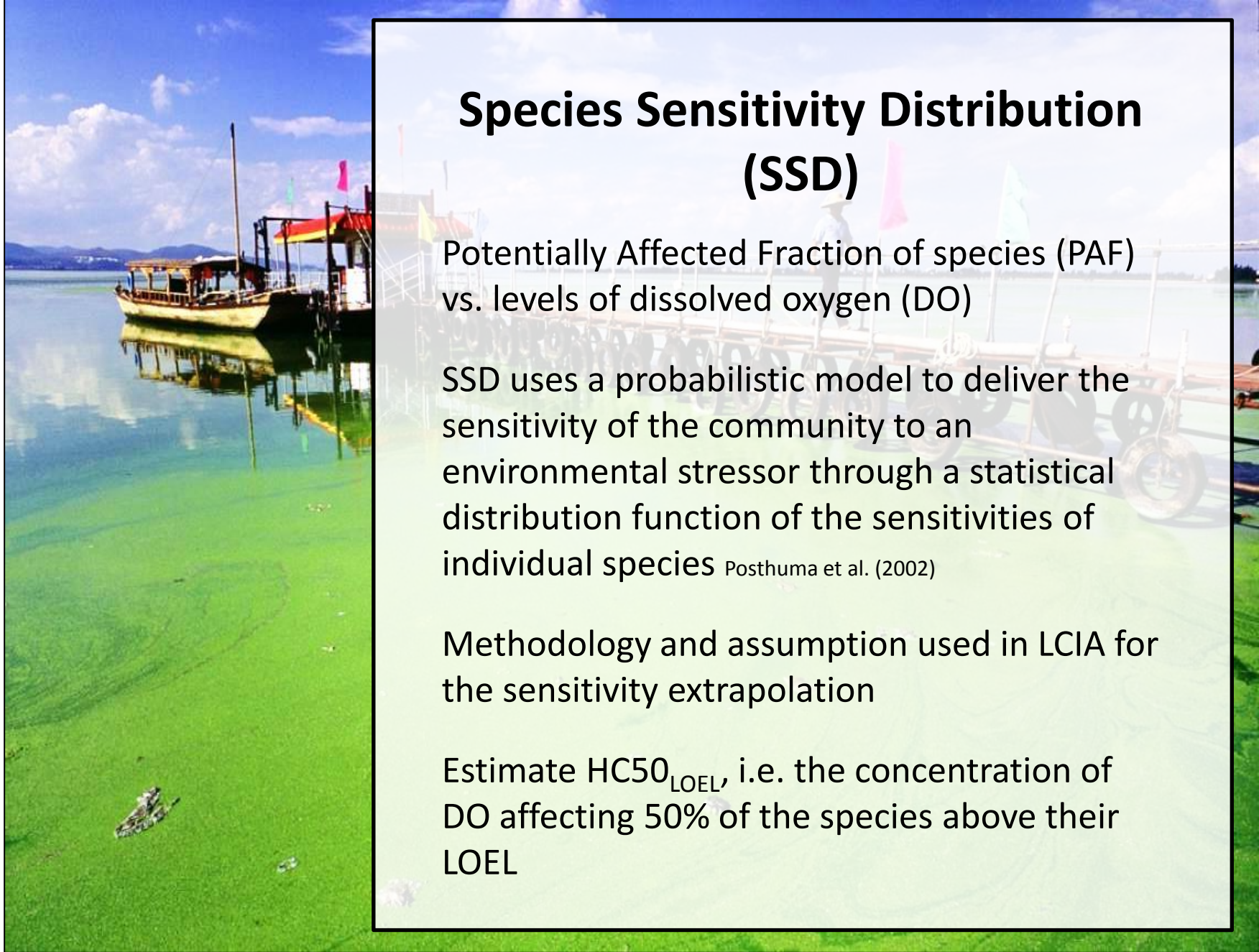
Geographical distribution of the 58 species:

- *'World Register of Marine Species' (WoRMS)* (www.marinespecies.org)
- *'The Species 2000 & ITIS Catalogue of Life'* (www.catalogueoflife.org)
- *'Fishbase'* (www.fishbase.org)
- *'FAO FishFinder'* (www.fao.org/fishery/fishfinder)

Grouped into 5 climate zones:

- Polar, subpolar, temperate, subtropical, and tropical

Sample size and lack of representativeness prevented classification at finer spatial resolutions



Species Sensitivity Distribution (SSD)

Potentially Affected Fraction of species (PAF) vs. levels of dissolved oxygen (DO)

SSD uses a probabilistic model to deliver the sensitivity of the community to an environmental stressor through a statistical distribution function of the sensitivities of individual species Posthuma et al. (2002)

Methodology and assumption used in LCIA for the sensitivity extrapolation

Estimate $HC50_{LOEL}$, i.e. the concentration of DO affecting 50% of the species above their LOEL

Effect Factor (EF)

The EF expresses the change of effect (ΔPAF) due to a variation of the stressor intensity (depletion of DO, i.e. $\Delta[\text{O}_2]$)

$$\mathbf{EF} = \frac{\Delta\text{PAF}}{\Delta[\text{O}_2]} = \frac{0.5}{\text{HC50}_{\text{LOEL}}}$$

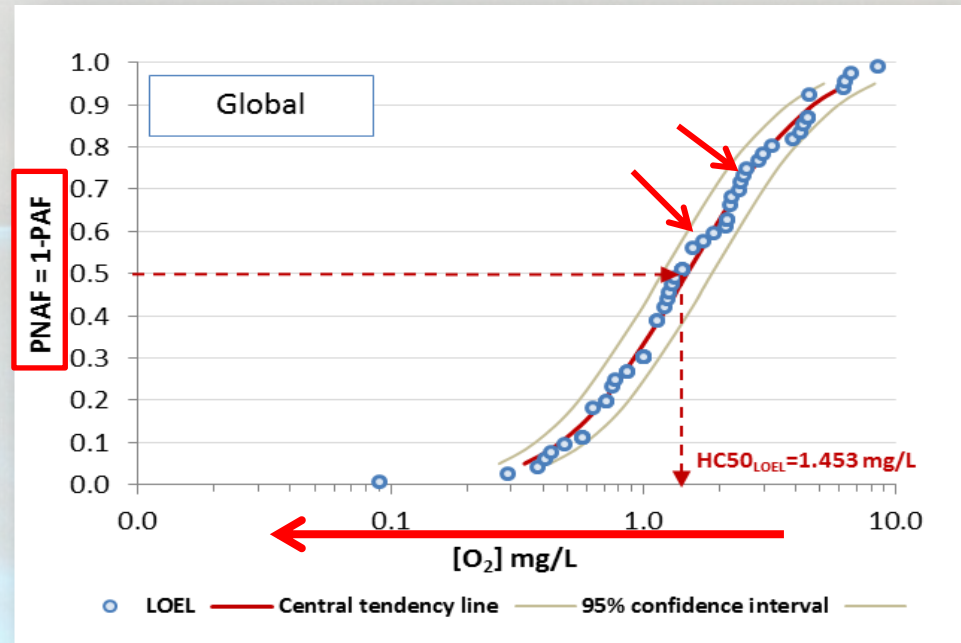
$\text{HC50}_{\text{LOEL}}$ can be obtained with SSD curves

$$\text{by } PNAF = \frac{1}{1 + e^{-(\log\text{HC50}_{\text{LOEL}} - \alpha)/\beta}}$$

or calculating the geometric mean of the LOEL data, $\text{HC50}_{\text{LOEL}} = 10^{\text{avg}(\log\text{LOEL})}$

[$\text{PAF} \cdot \text{m}^3/\text{kgO}_2$]

Preliminary results (I)



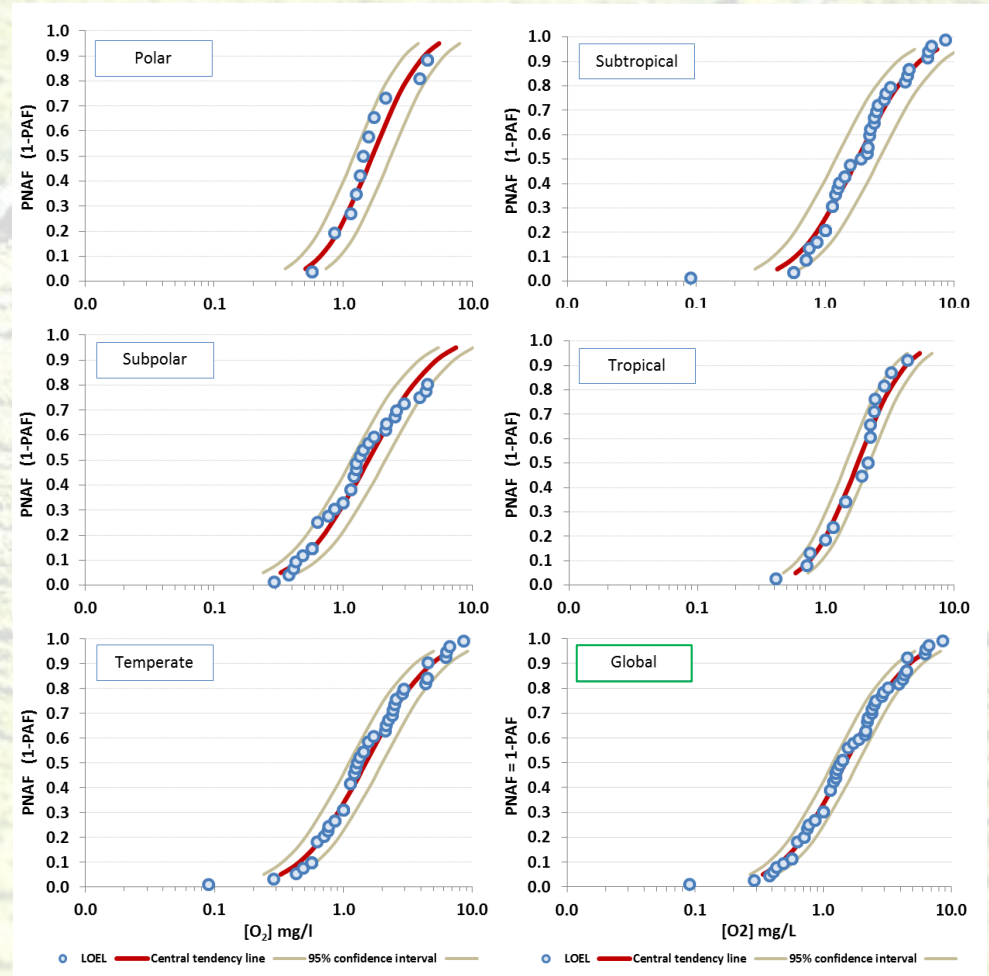
SSD curve of sensitivity to hypoxia (LOEL)

Estimation of e.g. the global default
 $HC50_{LOEL} = 1.453 \text{ mgO}_2/\text{L}$ (n=58)

PNAF, Potentially Not Affected Fraction of species

Preliminary results (II)

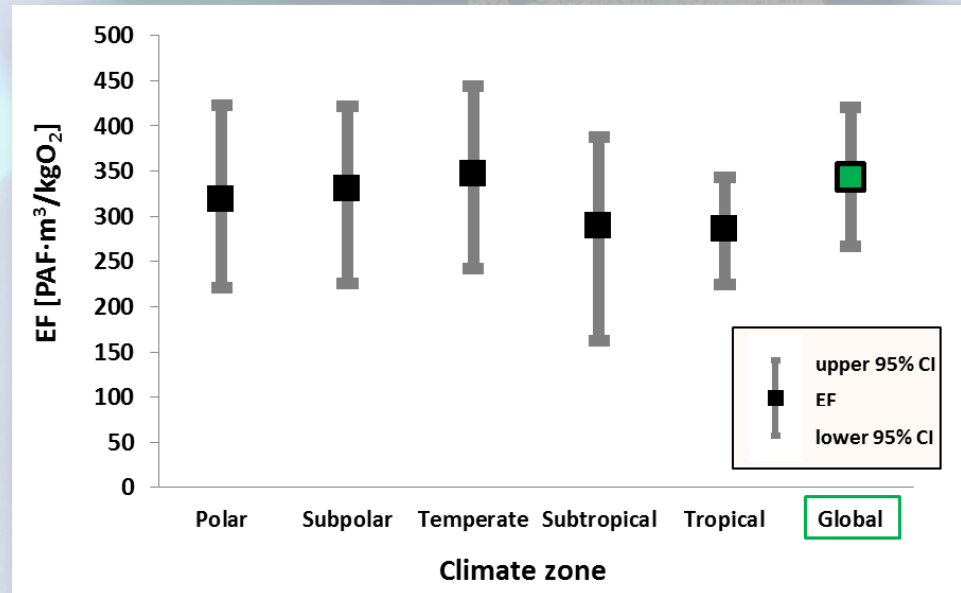
SSD curves for 5 climate zones and global default



Preliminary results (III)

EF estimation for 5 climate zones and global default

Climate zone	<i>n taxa</i>	HC50 _{LOEL}	EF	
		mgO ₂ /L	lower CI	PAF·m ³ /kgO ₂ upper CI
Polar	13	1.57	215.18	318.90 416.34
Subpolar	38	1.52	237.51	329.88 434.47
Temperate	47	1.44	249.72	347.07 452.15
Subtropical	41	1.73	191.01	289.48 416.32
Tropical	19	1.75	229.18	285.93 347.16
Global	58	1.45	267.76	344.10 421.23



Discussion (I)

Why such low spatial differentiation?

Species per climate zone range from 13 (polar) to 47 (temperate) – too few?

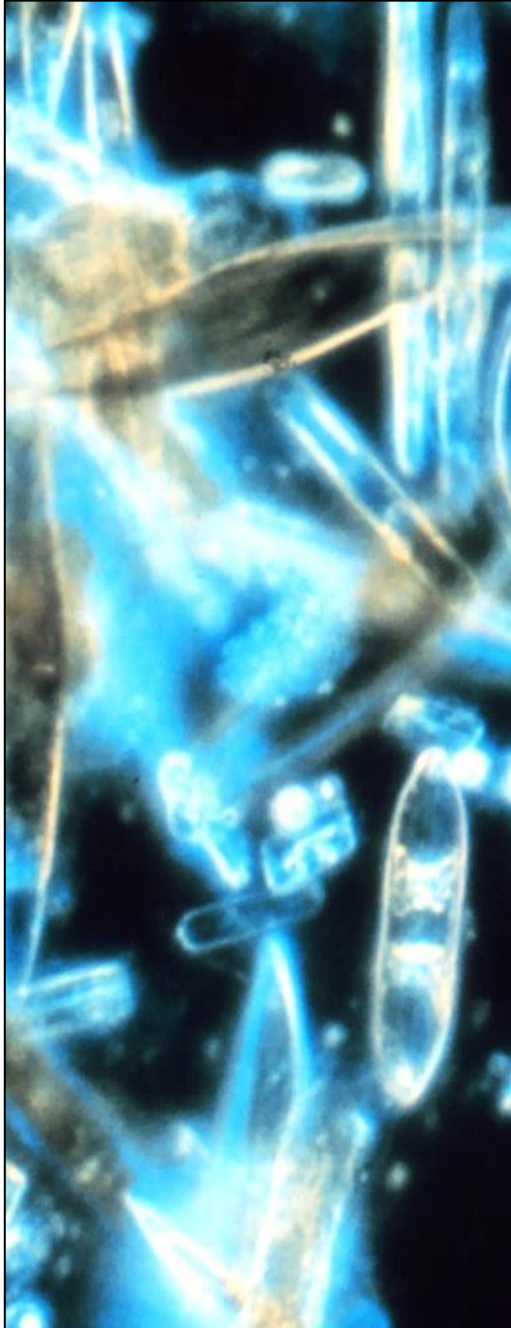
Species overlap:

- | | | |
|---|-----------|-------------|
| | 25 | Test |
| • 100% Polar also found in <u>Subpolar</u> | | -2% |
| • 72% Subpolar found in <u>Temperate</u> | 9 | -25% |
| • 72% <u>Temperate</u> found in Subtropical | 13 | -44% |

Overlap = high contribution from sensitive species

Spatial resolution at climate zone level – is it too low?

Is there actually a natural differentiation of sensitivity? (*water Temp, metabolism, solubility*)



Discussion (II)

Issues with data representativeness?

Test-related errors – experimental methods, endpoints classification or identification

Biased selection for ‘preferred’ species or taxonomic groups:

- Easier to rear/maintain
- Show visible (easy) endpoints
- Commercial value
- Locally available

Geographical representativeness and species coverage

e.g. Mediterranean Sea (18/170) – LOEL for only 11% of potentially occurring species (IUCN db)

Preliminary conclusions

Method based on SSD and sensitivity to oxygen depletion was proposed

Applicable in LCIA as an EF for the marine eutrophication indicator

Contribute to a CF expressing the damage to ecosystem quality

The global default EF can be used for any region

Low spatial differentiation obtained mainly due to a short dataset and some concerns about representativeness

To increase resolution → expand the dataset



Thank you all for your attention

Quantitative Sustainability Assessment
Department of Management Engineering

nmdc@dtu.dk - www.qsa.man.dtu.dk

