



## Relationship between Beta-Lactoglobulin and Bovine Submaxillary Mucin: Structure and Tribology Studies

Celebioglu, Hilal Yilmaz; Guðjónsdóttir, María; Chronakis, Ioannis S.; Duus, Jens Øllgaard; Lee, Seunghwan

*Publication date:*  
2014

[Link back to DTU Orbit](#)

*Citation (APA):*  
Celebioglu, H. Y., Guðjónsdóttir, M., Chronakis, I. S., Duus, J. Ø., & Lee, S. (2014). *Relationship between Beta-Lactoglobulin and Bovine Submaxillary Mucin: Structure and Tribology Studies*. Poster session presented at 12th International Conference on the Applications of Magnetic Resonance in Food Science, Cesena, Italy.

---

### General rights

Copyright and moral rights for the publications made accessible in the public portal are retained by the authors and/or other copyright owners and it is a condition of accessing publications that users recognise and abide by the legal requirements associated with these rights.

- Users may download and print one copy of any publication from the public portal for the purpose of private study or research.
- You may not further distribute the material or use it for any profit-making activity or commercial gain
- You may freely distribute the URL identifying the publication in the public portal

If you believe that this document breaches copyright please contact us providing details, and we will remove access to the work immediately and investigate your claim.

# Relationship between Beta-Lactoglobulin and Bovine Submaxillary Mucin: Structure and Tribology Studies



Hilal Y. Çelebioğlu<sup>1</sup>, María Guðjónsdóttir<sup>1</sup>, Ioannis S. Chronakis<sup>1</sup>, Jens Ø. Duus<sup>3</sup>, Seunghwan Lee<sup>2</sup>

<sup>1</sup>National Food Institute, Technical University of Denmark, 2800 Kgs. Lyngby, Denmark  
<sup>2</sup>Department of Mechanical Engineering, Technical University of Denmark, 2800 Kgs. Lyngby, Denmark  
<sup>3</sup>Department of Chemistry, Technical University of Denmark, 2800 Kgs. Lyngby, Denmark

## INTRODUCTION

For food oral processing, any specific component in the food products and its structural changes in varying environment can give crucial influence on the sensory acceptance of the products. The objective of this research was to investigate the interaction between beta-Lactoglobulin (BLG), the major whey protein, and bovine submaxillary mucin (BSM), a (model) major salivary component, when mixed (1:1) at different pHs (pH 3.0, 5.0 and 7.4) in order to broaden our understanding of food oral processing on the molecular level. High and low field Nuclear Magnetic Resonance (NMR), Dynamic Light Scattering (DLS) and Circular Dichroism (CD) techniques were employed to study the structural changes. A Mini-Traction Machine (MTM) was then employed to investigate the friction and lubrication properties of the proteins at a compliant interface, as a mimic of oral processing of dairy products.

## High field-NMR results

The possible interaction mainly takes place based on the chemical shifts between 3.1 to 4.4 ppm, mostly corresponding to polar amino acids, sulfate ester, sialic acid, and GalNAc residues. To conclude, the interaction between these two proteins is mostly of hydrophilic origin.

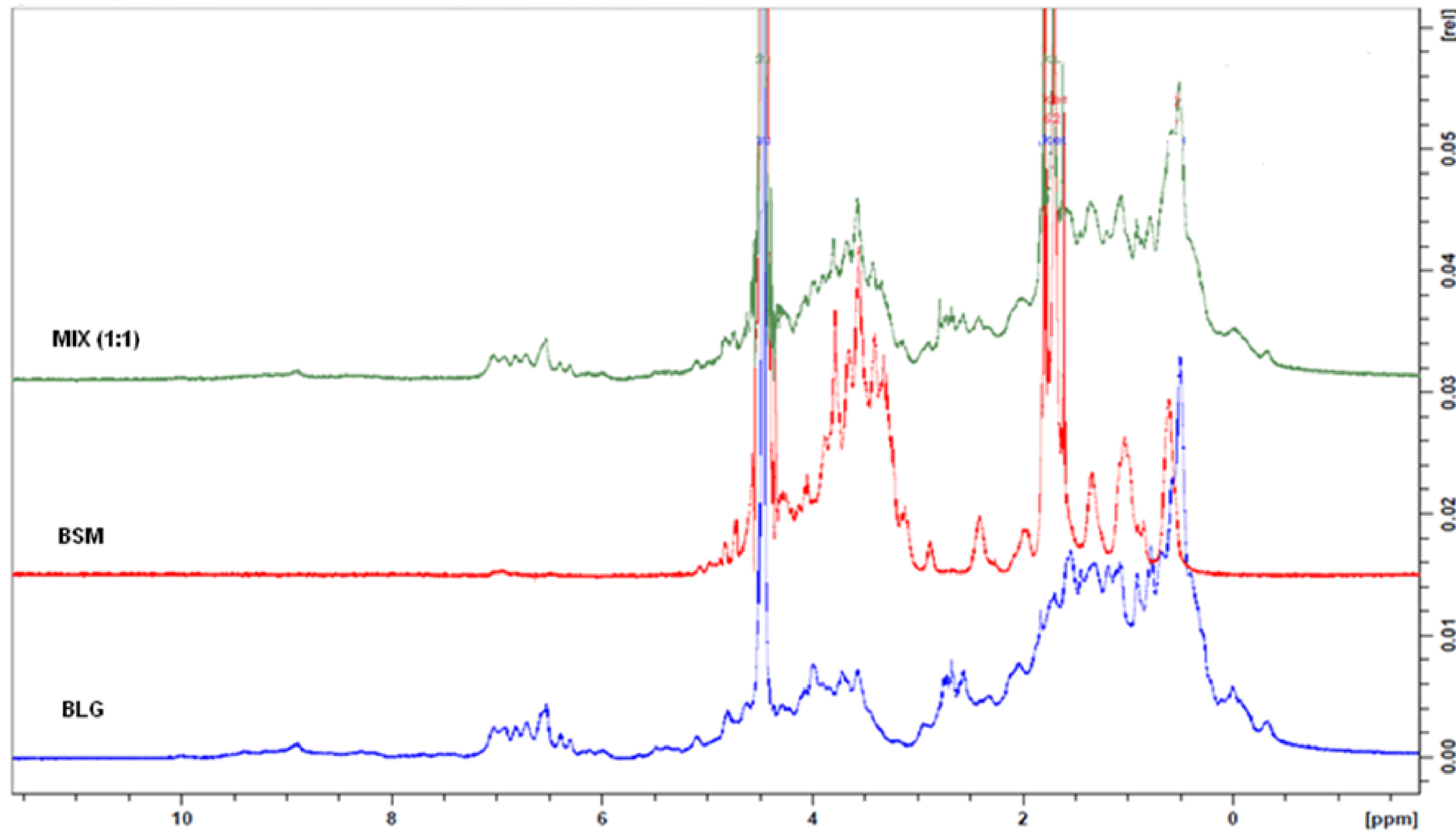
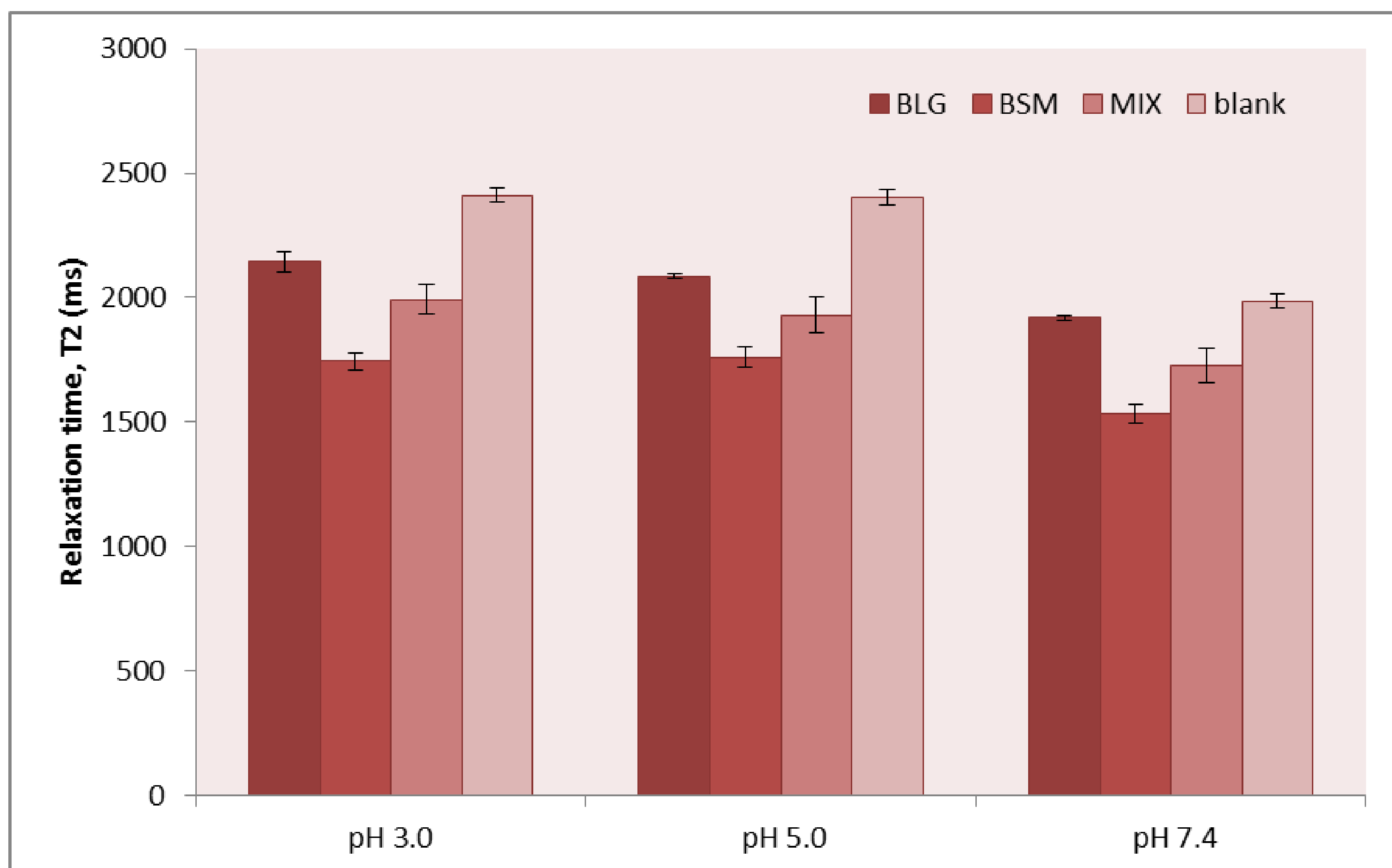


Figure 2. High field NMR spectra of BLG, BSM, and the mixture at pH 7.4.

## Low field-NMR results

A decrease in water mobility in the mixture compared to the pure BLG and buffer solutions was possibly connected to the fewer number of hydrophilic binding sites available for water-protein interaction. The interaction between BLG and BSM also caused a more compact configuration than BSM alone and resulted in higher water mobility compared to pure BSM solution.

Figure 3. Low field NMR spectra of BLG, BSM, and the mixture at pH 3.0, 5.0, and 7.4



## Dynamic Light Scattering results

An intermediate size distribution of the mixture compared to BSM or BLG alone suggested that the interaction between BSM and BLG led to a compact aggregation.

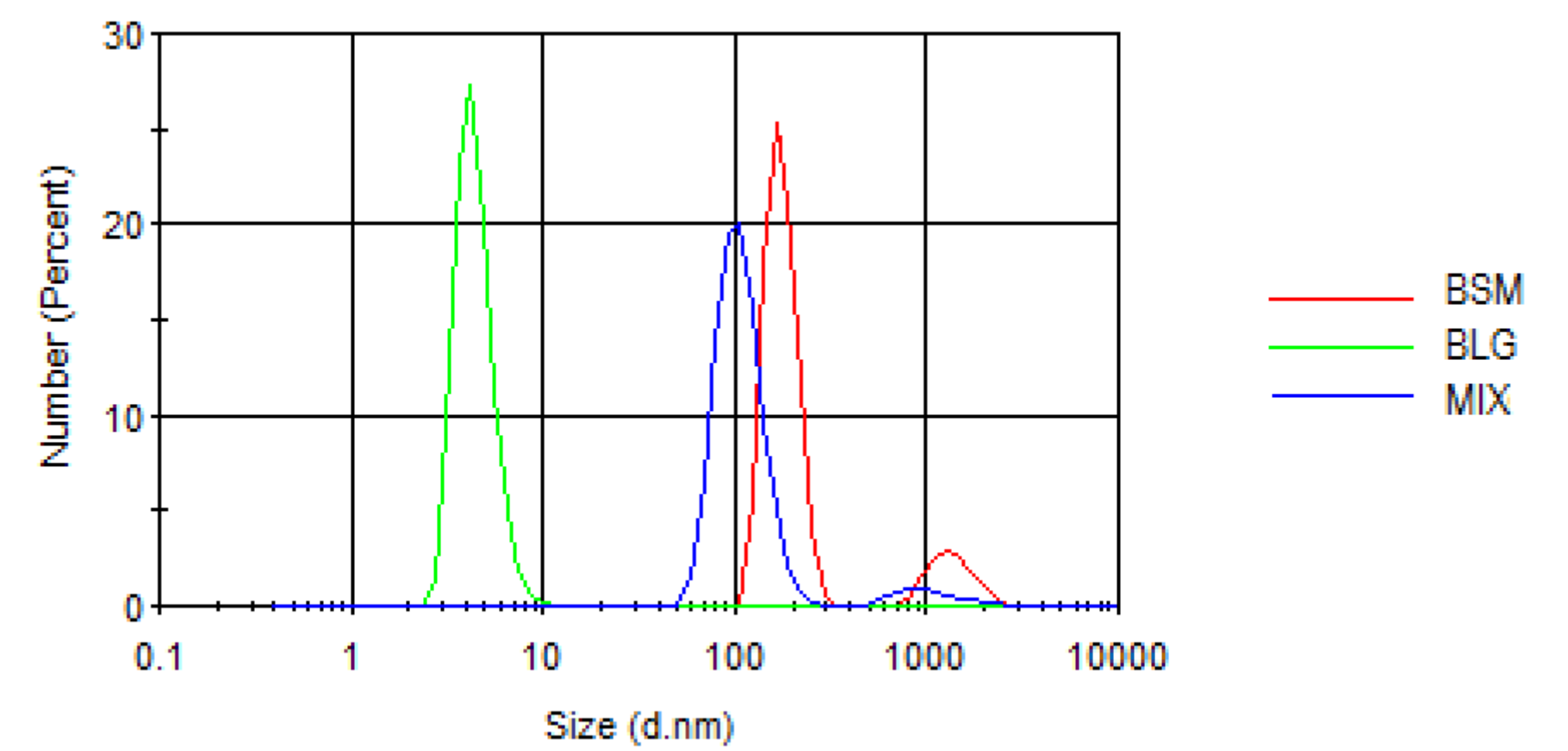


Figure 1. Size distribution curve of BSM, BLG and the mixture at pH 7.4

Table 1. Chemical shifts of the repeated amino acids and other residues in BSM molecules

Chemical shift (ppm)	Residues
0.6 – 0.9	Valine
1.2	Nonglycosylated Threonine
1.4	Alanine
1.5 – 1.8	GalNAc residues
2.1 – 2.3	Proline
2.8 – 3.1	Cysteine
3.2 – 4.4	Threonine, Serine, sulfate esters, sialic acid residues
4.6 – 4.9	GalNAc residues

Table 2. The interacted residues of BSM and BLG in their mixture (1:1)

Residues 3.1– 4.4 ppm
BSM
Threonine
Serine
Sulfate ester
Sialic acid
Threonine
Tryptophan
Serine
Aspartic acid
Tyrosine
BLG
Asparagine
Phenylalanine
Cysteine
Histidine
Proline
Glutamine
Leucine

## Mini-Traction Machine results

At all pH conditions, BSM was observed to provide the lowest friction forces. However, the relative difference compared to BLG and the BSM-BLG mixture was gradually diminishing with lowering pH. This is partly due to increasing friction forces of BSM with decreasing pH, and partly due to the complexation of BLG and BSM at low pH, where these components are oppositely charged.

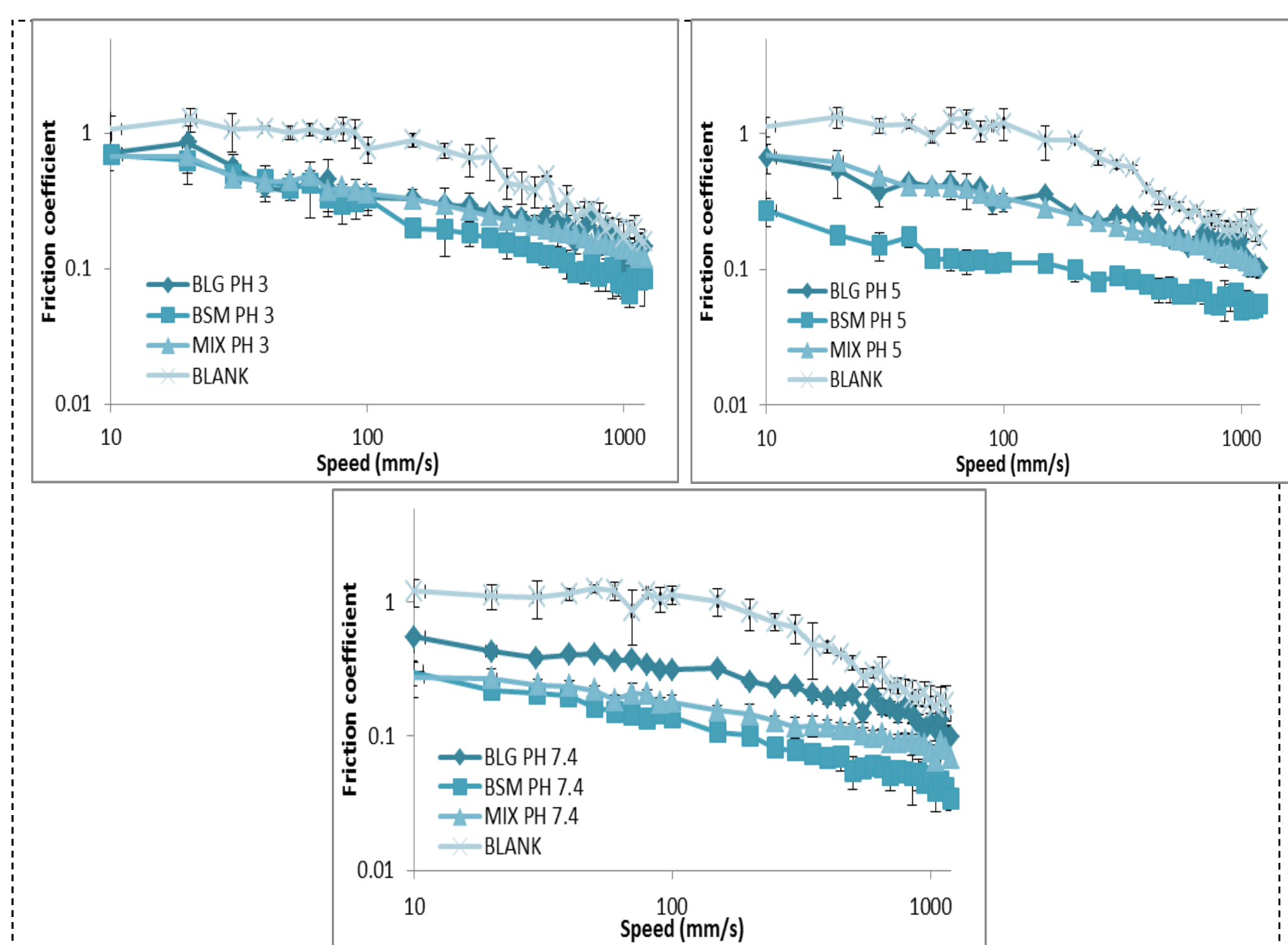


Figure 4. Friction coefficient distribution of BLG, BSM and the mixture over buffer at pH 3.0, 5.0, and 7.4

The present results provide insight into the interactions of the BSM protein with the BLG; further model biopolymers and methods are currently under investigation.

### Acknowledgments:

Financial support from the Ministry of National Education, the Republic of Turkey for the PhD scholarship to Mrs. Çelebioğlu, and from the Danish Strategic Research Council (DSF -10-93456, FENAMI Project), is gratefully acknowledged.

