



## OSPF-TE Extensions for Green Routing in Optical Networks

Wang, Jiayuan; Ricciardi, S. ; Fagertun, Anna Manolova; Ruepp, Sarah Renée; Careglio, D. ; Dittmann, Lars

*Published in:*  
Proceedings of the 17th OptoElectronics and Communications Conference

*Publication date:*  
2012

[Link back to DTU Orbit](#)

*Citation (APA):*  
Wang, J., Ricciardi, S., Fagertun, A. M., Ruepp, S. R., Careglio, D., & Dittmann, L. (2012). OSPF-TE Extensions for Green Routing in Optical Networks. In *Proceedings of the 17th OptoElectronics and Communications Conference* IEEE.

---

### General rights

Copyright and moral rights for the publications made accessible in the public portal are retained by the authors and/or other copyright owners and it is a condition of accessing publications that users recognise and abide by the legal requirements associated with these rights.

- Users may download and print one copy of any publication from the public portal for the purpose of private study or research.
- You may not further distribute the material or use it for any profit-making activity or commercial gain
- You may freely distribute the URL identifying the publication in the public portal

If you believe that this document breaches copyright please contact us providing details, and we will remove access to the work immediately and investigate your claim.

# OSPF-TE Extensions for Green Routing in Optical Networks

J.Wang\*, S. Ricciardi\*\*, A.V. Manolova\*, S. Ruepp\*, D. Careglio\*\*, and L. Dittmann\*

\* Technical University of Denmark, Ørsted Pl., 2800 Kgs. Lyngby, Denmark

\*\* Technical University of Catalonia, C. Jordi Girona 1-3, 08034, Barcelona, Spain

## Abstract

**This paper proposes extensions to the OSPF-TE protocol to enable green routing in GMPLS-controlled optical networks. Simulation results show a remarkable reduction in CO<sub>2</sub> emissions by preferring network elements powered by green energy sources in the connection routing.**

## I. INTRODUCTION

The growing energy consumption and emissions of CO<sub>2</sub> in the networks are becoming major issues for network development. This paper focuses on the network operation level, utilizing Generalized Multiprotocol Label Switching (GMPLS) control plane in optical core networks. Smart Grid power distribution networks will enable telecommunication networks to be *aware* of the energy source which is currently powering them. The availability of green energy sources (which emit little or no CO<sub>2</sub>) can be greatly influenced by natural phenomena, such as sunlight, wind and tide, or by geographic location, like hydro-electrical and geothermal power plants. Thus, in order to operate the network in a greener manner, it is necessary to have the energy sources information spread and updated in the whole network area, which can influence the routing decision process. In this paper, an extension is proposed for the Open Shortest Path First - Traffic Engineering (OSPF-TE) [1] protocol, and the impact of energy sources information on the network CO<sub>2</sub> emissions is discussed. Simulations are conducted in a dynamic network environment, and analysis of network performance is presented, where the green energy source availability changes in time.

## II. COST FUNCTION

The Smart Grid provides the control plane with the energy source information, each with its own carbon footprint. All the traffic is assumed to be optical and unsplitable, and no wavelength conversion or regeneration is considered. The network is modeled as an undirected graph  $G=(V,E)$ , with the nodes  $V$  being the optical cross-connect (OXC) and the edges  $E$  being the optical links. For generality sake, we assume that devices in the network can be powered by any type of energy source based on a random selection, and the energy sources availability randomly changes on prefixed time basis. In the proposed model, OXCs, optical links and

optical amplifiers (OAs) influence the routing decision. The proposed energy-efficient (EE) routing algorithm is based on the Dijkstra shortest path. Therefore, the cost of edge  $(u,v) \in E$ , used in the path computation, depend on the mentioned energy values:

$$e_{uv} = \frac{e_u}{n_u} + \frac{e_v}{n_v} + \sum_{i=1}^{\lfloor l_{uv}/\Lambda \rfloor} e_i^{(u,v)}, \quad (1)$$

where  $u, v \in V$ ,  $e_u$  and  $e_i^{(u,v)}$  are respectively the energy sources (Table 1) of node  $u$  and of the  $i^{\text{th}}$  OA on link  $(u,v)$  (if any),  $l_{uv}$  is the physical length of link  $(u,v)$  and  $\Lambda$  is the maximum link length without optical amplification. Note that the energy source contribution of nodes is divided among the number of links, indicated by  $n_u$  and  $n_v$ .

Thus, the cost of a lightpath  $P$  from source node  $s$  to destination node  $d$  is given by the sum of the energy costs of all the links in  $P$ :

$$E_{sd}^P = \sum_{(u,v) \in P} e_{uv}. \quad (2)$$

In this way, each connection request will be routed selecting the less costly lightpath, lowering the carbon footprint of the network.

## III. GMPLS EXTENSIONS

In order to obtain the energy information specified in the cost function (1), extensions to OSPF-TE protocol are proposed. Opaque Link State Advertisements (LSAs) [2] of the OSPF protocol are used to implement the proposed extensions. Considering an agile implementation, new TLVs can be added directly to the TE extensions for OSPF (TE-LSA, *Opaque Type 1*). The TE-LSA formats start with the standard LSA header as shown in [2]. The proposal uses *Type 10* LSAs, which have an area flooding scope. TLVs are contained in the payload of LSAs. TE LSAs define two types of top-level TLVs. In this paper, Link level TLV is used as the top-level TLV. The TLV format is shown in [2]. Thus, the defined parameters are carried by setting up new sub-TLVs inside Link TLV (type 2) of TE LSAs [1]. *Type* in sub-TLVs is considered in the range of 32768-32777, as defined for experimental use. Table 1 lists the implementation of TLVs proposed in this paper. Each value in the TLV corresponds to a different type of energy source, where greater values correspond to higher CO<sub>2</sub> emissions (i.e. higher energy level). *Length* indicates the standard length of the *Value* field. The proposed TE LSAs will be flooded over the whole network on a fixed time-basis, informing the current energy source information per edge.

---

This work was supported in part by the COST Action IC0804, the Spanish Ministry of Science and Innovation under the DOMINO project (TEC2010-18522), the Catalan Government under the contract SGR 1140 and the DIUE/ESF under the grant FI-201000740. The authors also acknowledge the support received from OPNET Technologies Inc.

TABLE I. SUB-TLVs FOR TE-LSA

Type	Length	Value
32768	4 octets	0 (Solar, Wind, Hydro-electrical)
32768	4 octets	1 (Nuclear)
32768	4 octets	2 (Geothermal)
32768	4 octets	3 (Natural Gas)
32768	4 octets	4 (Biomasses)
32768	4 octets	5 (Fuel)
32768	4 octets	6 (Coal)

#### IV. RESULTS AND DISCUSSIONS

The cost function and the proposed OSPF-TE extension are implemented in the event driven simulator OPNET [3]. The simulated network is the COST266 [4], with 37 nodes and 55 bidirectional links, each with sixty-four wavelengths. More details regarding model implementation can be found in [5]. Optical amplifiers are placed every 80km on each link. Label Switched Path (LSP) connection requests are generated as a Poisson process, with exponentially distributed connection duration. The total traffic load is dynamically maintained at 12 Erlangs per node. In the simulation model, first fit algorithm is applied for the wavelength assignment. At fixed time intervals (*PowerChangeInterval*) energy sources randomly change and a new update of the energy source information (TE-LSA) is originated and flooded between neighbors using the proposed OSPF-TE extension, and the new energy cost is updated in nodes LSA databases, and thus, used for routing calculation.

Three performance metrics have been evaluated: Energy cost (Fig. 1), average path length (in hop count) (Fig. 2) and connection blocking rate (Fig. 3). As a comparison, results using a hop based shortest path (SP) algorithm are presented. The mean value of connection duration is 6 hours, with mean inter-arrival rate of 30 minutes. *PowerChangeInterval* values vary among 3, 6, 12, 24 hours, during 30 days of simulation runtime.

With the proposed algorithm, a network convergence time of 17ms can be obtained, assuming a processing delay of 1ms in each node. The network energy level (carbon footprint) notably decreased with the EE algorithm (regardless of the *PowerChangeInterval*). Compared to the SP algorithm, the hop count number has a marginal increase (less than 1 hop), indicating that using the proposed algorithm will result in slightly longer routes. An interesting result is that EE connection blocking rate is higher, due to the congestion on greener paths. Further simulations found that in order to reach the same blocking rate as the SP algorithm, 90 wavelengths per link have to be used, instead of 64. This implies a trade-off between the reduction of CO<sub>2</sub> emissions and the network capacity.

#### V. CONCLUSIONS

In this paper, a green routing algorithm is proposed, aiming to route the traffic towards green energy sources. Results show a 16% reduction in the energy level and an increase of 3.3% at most in the blocking rate. Although the blocking rate can be reduced at the expenses of extra

capacity, the trade-off between resource usage and energy level will be further investigated as future work.

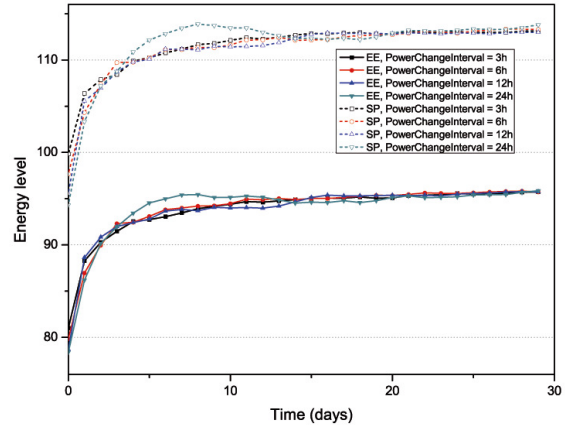
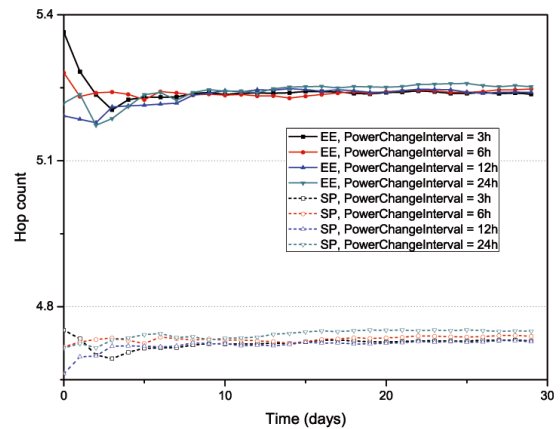
Fig. 1. Energy level (CO<sub>2</sub> emission units) vs Time.

Fig. 2. Hop count vs Time.

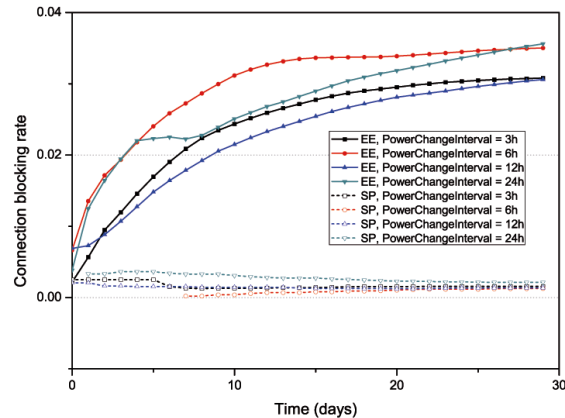


Fig. 3. Connection blocking rate vs Time.

#### REFERENCES

- [1] D. Katz, "Traffic Engineering (TE) Extensions to OSPF Version 2," *RFC 2370*, Sep., 2003.
- [2] R. Coltun, "The OSPF Opaque LSA Option," *RFC 2328*, Jul., 1998.
- [3] OPNET Technologies, Inc., <http://www.opnet.com>
- [4] R. Inkret et al., "HWDN Network Availability Performance Analysis for the COST 266 Case Study Topologies," available on the internet, 2003.
- [5] J. Wang et al., "Green-Aware Routing in GMPLS Networks," *ICNC workshop*, Jan., 2012.