



## The Proteasome System in Infection: Impact of $\beta 5$ and LMP7 on Composition, Maturation and Quantity of Active Proteasome Complexes.

**Joeris, Thorsten; Schmidt, Nicole; Ermert, David; Krienke, Petra; Visekruna, Alexander; Kuckelkorn, Ulrike; Kaufmann, Stefan H. E.; Steinhoff, Ulrich**

*Published in:*  
PLOS ONE

*Link to article, DOI:*  
[10.1371/journal.pone.0039827](https://doi.org/10.1371/journal.pone.0039827)

*Publication date:*  
2012

*Document Version*  
Publisher's PDF, also known as Version of record

[Link back to DTU Orbit](#)

### *Citation (APA):*

Joeris, T., Schmidt, N., Ermert, D., Krienke, P., Visekruna, A., Kuckelkorn, U., Kaufmann, S. H. E., & Steinhoff, U. (2012). The Proteasome System in Infection: Impact of  $\beta 5$  and LMP7 on Composition, Maturation and Quantity of Active Proteasome Complexes. *PLOS ONE*, 7(6), Article e39827. <https://doi.org/10.1371/journal.pone.0039827>

---

### General rights

Copyright and moral rights for the publications made accessible in the public portal are retained by the authors and/or other copyright owners and it is a condition of accessing publications that users recognise and abide by the legal requirements associated with these rights.

- Users may download and print one copy of any publication from the public portal for the purpose of private study or research.
- You may not further distribute the material or use it for any profit-making activity or commercial gain
- You may freely distribute the URL identifying the publication in the public portal

If you believe that this document breaches copyright please contact us providing details, and we will remove access to the work immediately and investigate your claim.

# The Proteasome System in Infection: Impact of $\beta$ 5 and LMP7 on Composition, Maturation and Quantity of Active Proteasome Complexes

Thorsten Joeris<sup>1</sup>, Nicole Schmidt<sup>1</sup>, David Ermert<sup>2</sup>, Petra Krienke<sup>1</sup>, Alexander Visekruna<sup>3</sup>, Ulrike Kuckelkorn<sup>4</sup>, Stefan H. E. Kaufmann<sup>1</sup>, Ulrich Steinhoff<sup>1,3\*</sup>

**1** Department of Immunology, Max Planck Institute for Infection Biology, Berlin, Germany, **2** Department of Cellular Microbiology, Max Planck Institute for Infection Biology, Berlin, Germany, **3** Institute for Microbiology and Hygiene, Philipps University Marburg, Hessen, Marburg, Germany, **4** Institute for Biochemistry, Charité Berlin, Berlin, Germany

## Abstract

Proteasomes are the major enzyme complexes for non-lysosomal protein degradation in eukaryotic cells. Mammals express two sets of catalytic subunits: the constitutive subunits  $\beta$ 1,  $\beta$ 2 and  $\beta$ 5 and the immunosubunits LMP2 ( $\beta$ 1i), MECL-1 ( $\beta$ 2i) and LMP7 ( $\beta$ 5i). The LMP7-propeptide (proLMP7) is required for optimal maturation of LMP2/MECL-1-containing precursors to mature immunoproteasomes, but can also mediate efficient integration into mixed proteasomes containing  $\beta$ 1 and  $\beta$ 2. In contrast, the  $\beta$ 5-propeptide (pro $\beta$ 5) has been suggested to promote preferential integration into  $\beta$ 1/ $\beta$ 2-containing precursors, consequently favouring the formation of constitutive proteasomes. Here, we show that pro $\beta$ 5 predominantly promotes integration into LMP2/MECL-1-containing precursors in IFN $\gamma$ -stimulated, LMP7-deficient cells and infected LMP7-deficient mice. This demonstrates that pro $\beta$ 5 does not direct preferential integration into  $\beta$ 1/ $\beta$ 2-containing precursors, but instead promotes the formation of mixed LMP2/MECL-1/ $\beta$ 5 proteasomes under inflammatory conditions. Moreover, the propeptides substantially differ in their capacity to promote proteasome maturation, with proLMP7 showing a significantly higher chaperone activity as compared to pro $\beta$ 5. Increased efficiency of proteasome maturation mediated by proLMP7 is required for optimal MHC class I cell surface expression and is equally important as the catalytic activity of immunoproteasomes. Intriguingly, induction of LMP7 by infection not only results in rapid exchange of constitutive by immunosubunits, as previously suggested, but also increases the total proteasome abundance within the infected tissue. Hence our data identify a novel LMP7-dependent mechanism to enhance the activity of the proteasome system in infection, which is based on the high chaperone activity of proLMP7 and relies on accelerated maturation of active proteasome complexes.

**Citation:** Joeris T, Schmidt N, Ermert D, Krienke P, Visekruna A, et al. (2012) The Proteasome System in Infection: Impact of  $\beta$ 5 and LMP7 on Composition, Maturation and Quantity of Active Proteasome Complexes. PLoS ONE 7(6): e39827. doi:10.1371/journal.pone.0039827

**Editor:** Rachel Louise Allen, University of London, St George's, United Kingdom

**Received:** March 17, 2012; **Accepted:** May 27, 2012; **Published:** June 29, 2012

**Copyright:** © 2012 Joeris et al. This is an open-access article distributed under the terms of the Creative Commons Attribution License, which permits unrestricted use, distribution, and reproduction in any medium, provided the original author and source are credited.

**Funding:** Funding was provided by the following sources: German Research Foundation, projects KU1261/1 and SFB650 TP18 (<http://www.dfg.de>), and a PhD grant of the Charité Berlin (<http://www.charite.de>); a PhD grant of the Sonnenfeld-Stiftung (<http://www.sonnenfeld-stiftung.de>); and a PhD grant of the IMPRS-IDI (<http://www.zibi-graduateschool-berlin.de>). The funders had no role in study design, data collection and analysis, decision to publish, or preparation of the manuscript.

**Competing Interests:** The authors have declared that no competing interests exist.

\* E-mail: [ulrich.steinhoff@staff.uni-marburg.de](mailto:ulrich.steinhoff@staff.uni-marburg.de)

## Introduction

Proteasomes execute the majority of non-lysosomal protein degradation in eukaryotic cells [1]. The central 20S complex of the proteasome is a barrel-like structure composed of  $\alpha$ - and  $\beta$ -subunits, which form heptameric rings arranged in an  $\alpha_{1-7}\beta_{1-7}\beta_{1-7}\alpha_{1-7}$  stoichiometry [2]. The assembly of 20S proteasomes is a well-ordered process. At first the proteasome assembling chaperones (PAC1-4) form a scaffold for the organisation of an  $\alpha$ -ring, which subsequently serves as a matrix for binding of the  $\beta$ -subunits, resulting in the formation of 13-15S precursor proteasomes [3,4,5]. Finally, the proteasome maturation protein (POMP) assists the assembly of two 15S half proteasomes to mature 20S complexes [6,7]. During the assembly process the propeptides of  $\beta$ -subunits exert a chaperone-like function, which is required for the effective maturation of precursor proteasomes [6,8]. Completion of 20S proteasome assembly is accompanied by autocatalytic

removal of the propeptides, which activates the catalytic sites of the mature  $\beta$ -subunits [9].

The 20S proteasome has three major proteolytic activities defined as caspase-, trypsin- and chymotrypsin-like [2], with the corresponding catalytic sites being assigned to the constitutive subunits  $\beta$ 1 (Y),  $\beta$ 2 (Z) and  $\beta$ 5 (X), respectively [10]. In mammals, the proteasome system displays further plasticity as three interferon-gamma (IFN $\gamma$ -inducible  $\beta$ -subunits, the immunosubunits LMP2 ( $\beta$ 1i), MECL-1 ( $\beta$ 2i) and LMP7 ( $\beta$ 5i), can replace their constitutive counterparts. Integration of either constitutive or immunosubunits gives rise to the major 20S proteasome subsets, named constitutive and immunoproteasomes respectively [11].

In the immune system proteasomes are the major source of antigenic peptides presented on major histocompatibility complex (MHC) class I molecules [1] and induction of immunoproteasomes is known to optimize this process [11]. Deletion of

LMP7, but not LMP2 or MECL-1, reduces MHC class I cell surface expression by about 25–50% [11,12], demonstrating the unique importance of this subunit for optimal antigen presentation.

In addition, LMP7 containing proteasomes have been described to drive inflammatory responses, which can in part be attributed to enhanced activation of the transcription factor NF- $\kappa$ B [13,14,15] and expression of LMP7 was shown to be crucial for resistance against oxidative stress [16]. At present, these diverse functions of LMP7 are solely attributed to its specific proteolytic activity [11,15,16]. However, besides its catalytic activity, expression of LMP7 has a substantial impact on the assembly and composition of 20S proteasomes. In this context, it has been shown that expression of LMP7 accelerates the rate of proteasome assembly, supporting the rapid formation of immunoproteasomes in infection and inflammation [17]. Further, it has been described that efficient maturation of LMP2/MECL-1-containing precursor proteasomes requires the propeptide of LMP7 (proLMP7), a concept known as cooperative assembly of immunoproteasomes [18,19]. However, integration of LMP7 is not restricted to immunoproteasomes, since proLMP7 also mediates integration into proteasomes containing  $\beta$ 1 and  $\beta$ 2 [19]. In line with this, various combinations of mixed proteasomes were recently identified in human tissues and cell lines [20,21]. In contrast to proLMP7, the propeptide of  $\beta$ 5 (pro $\beta$ 5) has been suggested to favour integration into  $\beta$ 1/ $\beta$ 2-containing precursors and thus formation of mixed proteasomes with LMP2/MECL-1/ $\beta$ 5 stoichiometry is supposed to be a rare event [18,19]. Despite this extensive knowledge on the impact of LMP7 and  $\beta$ 5 on proteasome assembly and composition, it is still not clear how the structural functions of these two subunits influence the proteasome system in infection.

Here, we analyzed the function of proLMP7 and pro $\beta$ 5 in reconstituted LMP7-deficient murine embryonic fibroblasts (*lmp7*<sup>-/-</sup> Mefs) and mimicked inflammatory conditions by IFN $\gamma$  stimulation. We found that not only proLMP7, but also pro $\beta$ 5 mediates predominant integration into LMP2/MECL-1-containing precursor proteasomes following IFN $\gamma$  stimulation, leading to considerable formation of mixed proteasomes with LMP2/MECL-1/ $\beta$ 5 stoichiometry. High abundance of such mixed proteasomes was also detected following infection of *lmp7*<sup>-/-</sup> mice, confirming that pro $\beta$ 5 does not have a preference for  $\beta$ 1/ $\beta$ 2-containing precursors, but can also generate mixed proteasomes. The propeptides however differed significantly in their capacity to promote proteasome maturation under inflammatory conditions, with proLMP7 showing a significantly higher efficiency to promote this process as compared to pro $\beta$ 5. In infection, accelerated proteasome maturation driven by LMP7 did not only result in a rapid exchange of constitutive by immunoproteasomes as previously suggested [17,22], but also in increased total proteasome quantity within the infected tissue. The specific proteolytic activity of LMP7 was however not crucial for enhanced proteasome maturation, since the chimeric proLMP7m $\beta$ 5 protein had a similar capacity to promote this process as compared to full-length LMP7. This identifies proLMP7 as the critical pacemaker, which accelerates the maturation of proteasomes under inflammatory conditions. Thus, we delineate a novel mechanism of LMP7-dependent regulation of the proteasome system in infection, which increases the proteasomal activity by enhanced generation of mature proteasome complexes.

## Results

### proLMP7 and pro $\beta$ 5 mediate incorporation into LMP2/MECL-1-containing precursor proteasomes upon IFN $\gamma$ stimulation

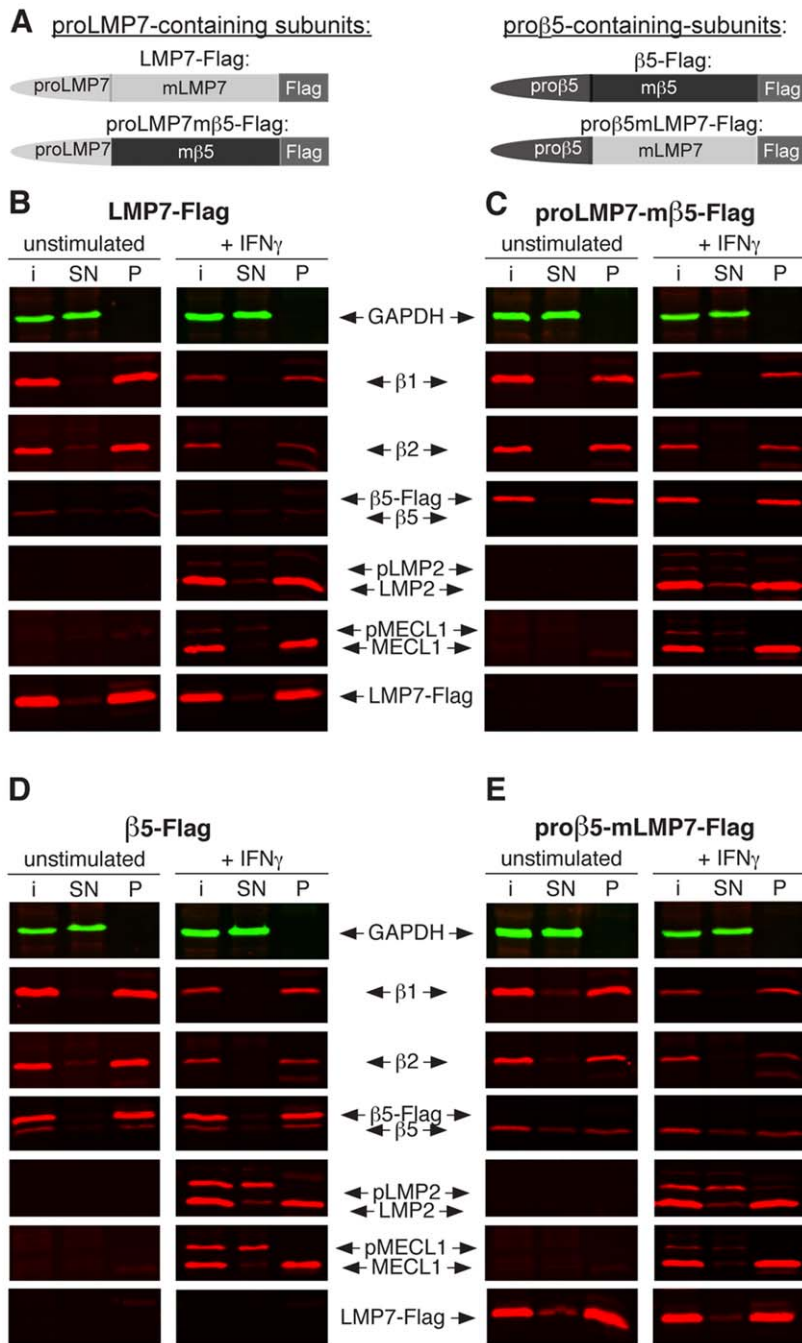
To study the function of pro $\beta$ 5 and proLMP7 under homeostatic and inflammatory conditions, we generated LMP7-deficient murine embryonic fibroblasts (*lmp7*<sup>-/-</sup> Mefs), which were reconstituted with Flag-tagged constructs of either full-length LMP7 (LMP7-Flag), proLMP7 fused to mature  $\beta$ 5 (proLMP7m $\beta$ 5-Flag), full-length  $\beta$ 5 ( $\beta$ 5-Flag) or pro $\beta$ 5 fused to mature LMP7 (pro $\beta$ 5mLMP7-Flag) (Fig. 1A). The reconstituted *lmp7*<sup>-/-</sup> Mefs displayed high expression of  $\beta$ 1 and  $\beta$ 2 during homeostasis and high amounts of LMP2 and MECL-1 after IFN $\gamma$  stimulation, which mimicked inflammatory conditions (Fig. 1B–E). The anti-Flag antibody did not precipitate proteasomes in *lmp7*<sup>-/-</sup> Mefs transduced with the empty vector construct (Fig. S1A), verifying that the precipitation was specific for flag-tagged complexes. Immunoprecipitation of the proLMP7-containing subunits, LMP7-Flag and proLMP7m $\beta$ 5-Flag, cleared the supernatants of all catalytic proteasome subunits in unstimulated and IFN $\gamma$  treated cells, demonstrating that proLMP7 mediates effective integration into all types of proteasomes, present under both conditions (Fig. 1B–C). Complete co-precipitation of  $\beta$ 1 and  $\beta$ 2 was also observed in unstimulated *lmp7*<sup>-/-</sup> Mefs expressing the pro $\beta$ 5-containing subunits,  $\beta$ 5-Flag or pro $\beta$ 5mLMP7-Flag (Fig. 1D–E), demonstrating effective maturation of  $\beta$ 1/ $\beta$ 2-containing precursors as expected. However, following IFN $\gamma$  stimulation, LMP2 and MECL-1 were efficiently co-precipitated with pro $\beta$ 5-containing subunits (Fig. 1D–E), revealing that pro $\beta$ 5 can also mediate substantial maturation of LMP2/MECL-1-containing precursors. Simultaneously, the abundance of  $\beta$ 1 and  $\beta$ 2 was reduced upon IFN $\gamma$  stimulation (Fig. 1B–E, Fig. S1A), suggesting that the pro $\beta$ 5-containing subunits did not favour integration into proteasomes containing  $\beta$ 1 and  $\beta$ 2, but integrated into LMP2/MECL-1-containing precursors instead.

To assess, whether  $\beta$ 5 is capable to integrate into LMP2/MECL-1-containing precursors in the presence of LMP7,  $\beta$ 5-Flag was over-expressed in wild type Mefs (WT-Mefs). In this setting,  $\beta$ 5-Flag also co-precipitated with LMP2 and MECL-1 following IFN $\gamma$  stimulation, while the amount of co-precipitated  $\beta$ 1 and  $\beta$ 2 was reduced (Fig. S1B). This confirms that  $\beta$ 5 can integrate into LMP2/MECL-1-containing precursors, even in competition with LMP7.

Still, low levels of unprocessed pLMP2 and pMECL-1 were only detected in supernatants of *lmp7*<sup>-/-</sup> Mefs reconstituted with the pro $\beta$ 5-containing subunits (Fig. 1D–E), revealing that pro $\beta$ 5 is a limiting factor for maturation of proteasomes under inflammatory conditions. However, our data indicate that this is not due to a preference of pro $\beta$ 5 for  $\beta$ 1/ $\beta$ 2-containing precursors as suggested previously [19]. Instead, it appears that pro $\beta$ 5 displays a generally lower capacity to promote proteasome maturation, which subsequently becomes a limiting factor for the maturation of proteasomes under inflammatory conditions.

### proLMP7 mediates higher efficiency of proteasome maturation compared to pro $\beta$ 5

It has been suggested that accelerated proteasome maturation by LMP7 is a function of its propeptide, since proLMP7 shows high affinity to the maturation factor POMP [17]. However, direct experimental evidence that proLMP7 mediates accelerated proteasome maturation is missing. Thus it remains unclear, whether only the propeptide or also the specific proteolytic activity



**Figure 1. Co-immunoprecipitation analysis using pro $\beta$ 5- and LMP7-containing proteasome subunits over-expressed in *Imp7*<sup>-/-</sup> Mefs.** Flag-tagged full-length LMP7 (LMP7-Flag), proLMP7 fused to mature  $\beta$ 5 (proLMP7m $\beta$ 5-Flag), full-length  $\beta$ 5 ( $\beta$ 5-Flag) and pro $\beta$ 5 fused to mature LMP7 (pro $\beta$ 5mLMP7-Flag) were over-expressed in *Imp7*<sup>-/-</sup> Mefs by retroviral transduction (A). The *Imp7*<sup>-/-</sup> Mef lines expressing the four different constructs were either left unstimulated or cultured in the presence of 50 U/ml IFN $\gamma$  for 4 days. Following cell lysis, the Flag-tagged subunits were precipitated with anti-Flag-M2<sup>®</sup> agarose. Co-precipitation of the catalytic proteasome subunits  $\beta$ 1,  $\beta$ 2, LMP2 and MECL-1 with the proLMP7-containing subunits LMP7-Flag (B) and proLMP7m $\beta$ 5-Flag (C) or the pro $\beta$ 5-containing subunits  $\beta$ 5-Flag (D) and pro $\beta$ 5mLMP7-Flag (E), was analysed by Two-colour fluorescent immunoblot analysis. The abundance of each subunit was determined in the input material (i), the supernatant of the immunoprecipitation (SN) and the precipitate (P) for both conditions tested.  
doi:10.1371/journal.pone.0039827.g001

and/or the carboxy-terminus of LMP7 are involved in this process. To address this issue, we analysed proteasome maturation in the reconstituted *Imp7*<sup>-/-</sup> Mefs.

The maturation factor POMP was used as an indicator for the presence of precursor proteasomes, since it is found in 13-15S precursors, but not in mature complexes [6,7]. POMP was

exclusively detected in IFN $\gamma$ -treated *Imp7*<sup>-/-</sup> Mefs reconstituted with the pro $\beta$ 5-containing subunits,  $\beta$ 5-Flag or pro $\beta$ 5mLMP7-Flag (Fig. 2A), confirming that pro $\beta$ 5 limits proteasome-maturation specifically under inflammatory conditions. When IFN $\gamma$ -stimulated, reconstituted *Imp7*<sup>-/-</sup> Mefs were analysed by immunoprecipitation, POMP was exclusively detected in the superna-

tants, but not the precipitates (Fig. 2B), demonstrating separation of mature proteasomes and the precursor fraction (Fig. 2B). This enabled us to determine the relative abundance of mature vs. precursor proteasomes in the reconstituted *lmp7*<sup>-/-</sup> Mefs. The abundance of  $\alpha 4$  was used as correlate for the quantity of mature and precursor proteasomes, since this structural subunit is integrated in both fractions. The efficiency of proteasome maturation was expressed as ratio of  $\alpha 4$ -abundance in mature vs. precursor proteasomes. Accordingly, high ratios indicate effective maturation, while low ratios reflect accumulation of precursors and thus low maturation efficiency (Fig. 2C). LMP7-Flag and proLMP7m $\beta 5$ -Flag showed no significant difference in the ratios of mature vs. precursor proteasomes, revealing that the proLMP7-containing subunits are equally efficient in driving proteasome maturation (Fig. 2C). Similarly,  $\beta 5$ -Flag or pro $\beta 5$ mLMP7-Flag did not show a significant difference in their ratios; demonstrating that the pro $\beta 5$ -containing subunits also have a similar capacity to mediate proteasome maturation (Fig. 2C). These results were confirmed by staining with a polyclonal antiserum recognizing various  $\alpha$ - and  $\beta$ subunits (pan-20S-subunits, Fig. 2B, D).

It is well known that proteasome maturation requires the catalytic activity of the  $\beta$ -subunits for autocatalytic removal of the propeptides and for degradation of POMP [6,9]. However, the efficiency of proteasome maturation observed for full-length LMP7 and the chimeric proLMP7m $\beta 5$  protein did not differ and the same holds true for full-length  $\beta 5$  and the chimeric pro $\beta 5$ mLMP7 protein (Fig. 2C, D). Hence, the specific proteolytic activity of the fused catalytic subunit is of minor importance for the efficiency of proteasome maturation, since it is not impaired as long as the proteolytic activity of either LMP7 or  $\beta 5$  is present. Accordingly, the propeptides are the crucial protein domains, which regulate the efficiency of proteasome maturation, whereas the proteolytic activities of the respective subunits or their carboxy-termini have no significant impact on this process.

Intriguingly, the ratios of mature vs. precursor proteasomes for the proLMP7-containing subunits were 3 to 4-fold higher as compared to the pro $\beta 5$ -containing subunits (Fig. 2C–D), demonstrating that proLMP7 has a substantially higher capacity to promote proteasome maturation as compared to pro $\beta 5$ . This confirms that accelerated proteasome maturation mediated by LMP7 is an exclusive function of its propeptide, as previously proposed [17]. Moreover, this finding underlines that the chaperone-function of pro $\beta 5$  might become a limiting factor for proteasome maturation under inflammatory conditions.

### Optimal MHC class I expression requires both, catalytic activity of LMP7 and efficient proteasome maturation by proLMP7

Deletion of LMP7 results in a significant decrease in MHC class I cell surface expression [12], but it is not known whether this phenotype is entirely caused by a lack of proteolytic activity of LMP7 or also affected by impaired proteasome maturation. Since proteasome maturation was restored in *lmp7*<sup>-/-</sup> Mefs expressing proLMP7m $\beta 5$ -Flag (Fig. 2A–D), we wondered whether the formation of mixed LMP2/MECL-1/ $\beta 5$  proteasomes, was also capable of rescuing MHC class I cell surface expression. However, in contrast to reconstitution with LMP7-Flag, expression of proLMP7m $\beta 5$ -Flag did not rescue surface expression of the MHC I molecules H2K<sup>b</sup> and H2D<sup>b</sup> (Fig. 3A–B). Accordingly, even strong formation of mixed LMP2/MECL-1/ $\beta 5$  proteasomes in *lmp7*<sup>-/-</sup> Mefs expressing proLMP7m $\beta 5$ -Flag (Fig. 1C) could not substitute for the formation of immunoproteasomes, demonstrating that the proteolytic activity of LMP7 is indispensable for

optimal MHC class I cell surface expression. Nevertheless, surface expression of H2K<sup>b</sup> and H2D<sup>b</sup> was also impaired in *lmp7*<sup>-/-</sup> Mefs reconstituted with pro $\beta 5$ mLMP7-Flag (Fig. 3A–B), but since considerable amounts of immunoproteasomes were detected in these cells after IFN $\gamma$  stimulation (Fig. 1E), an increase in MHC class I surface expression would have been expected. Accordingly, the fusion of pro $\beta 5$  to LMP7 also limits the MHC class I cell surface expression. This reveals that optimal MHC class I cell surface expression does not only require the proteolytic activity of LMP7, but furthermore requires the chaperone activity of proLMP7 to drive optimal proteasome maturation.

### Infection of *lmp7*<sup>-/-</sup> mice with listeriae induces formation of mixed proteasomes

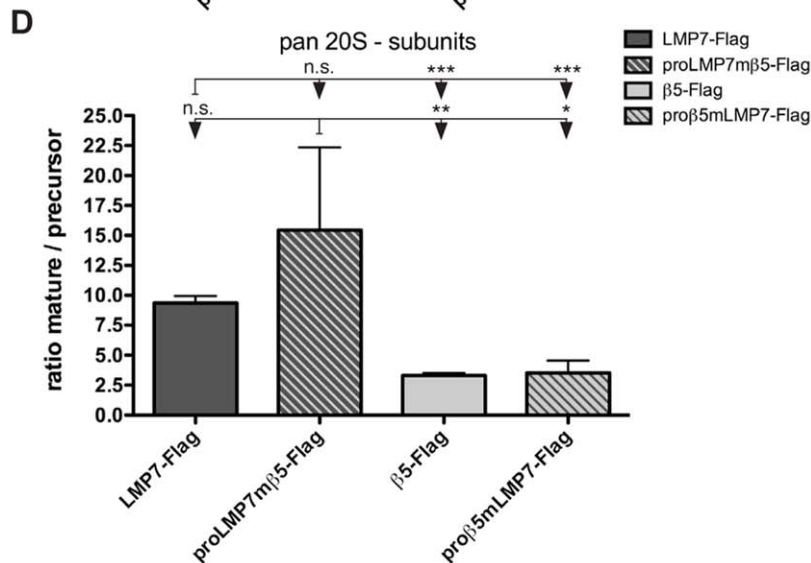
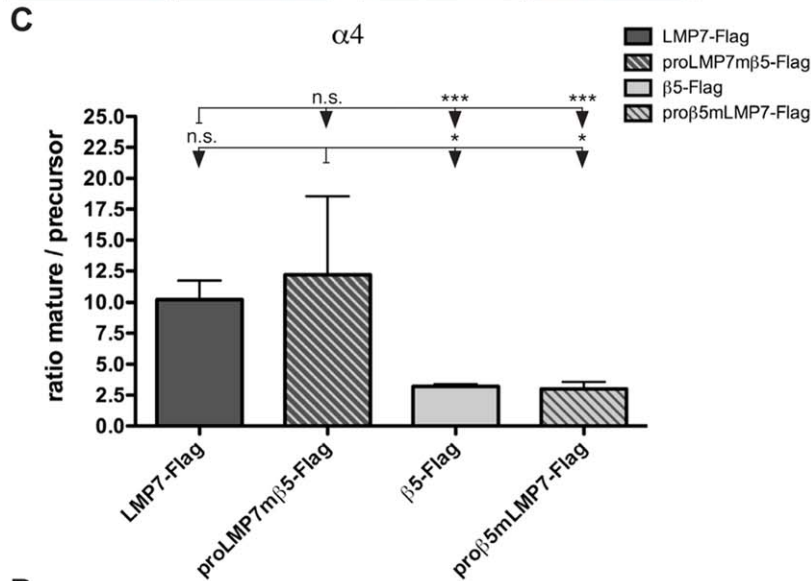
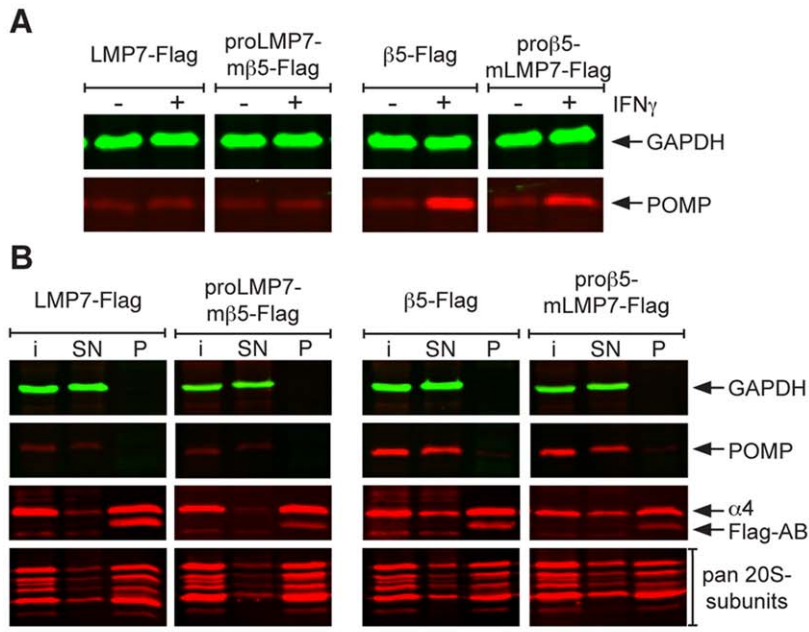
The formation of mixed proteasomes containing LMP2, MECL-1 and  $\beta 5$  has been suggested to be inefficient due to preferential integration of  $\beta 5$  into constitutive proteasomes [18,19]. Since we predominantly found LMP2/MECL-1/ $\beta 5$  proteasomes in IFN $\gamma$ -stimulated *lmp7*<sup>-/-</sup> Mefs *in vitro*, we wondered to which extent these mixed proteasomes were formed following infection of *lmp7*<sup>-/-</sup> mice *in vivo*. To this end, wild type control mice (WT mice) and *lmp7*<sup>-/-</sup> mice were infected with *Listeria monocytogenes*, which is known to trigger IFN $\gamma$ -dependent expression of immunosubunits [22,23]. 2D Blue Native/SDS-PAGE was used to identify various mature and precursor proteasome complexes (Fig. S2), which allowed to track the integration of catalytic proteasome subunits into diverse proteasome complexes.

As expected listeria-infection of WT mice induced increased formation of immunoproteasomes in the liver (Fig. S3A), while their abundance was constitutively high in spleen (Fig. S3B). Noteworthy, high abundance of LMP2 and LMP7 but not MECL-1 was detected in mature proteasomes of naïve WT liver (Fig. S3A), indicating the formation of LMP2/ $\beta 2$ /LMP7 or  $\beta 1$ / $\beta 2$ /LMP7 proteasomes, which were recently also identified in various human tissues [20].

Interestingly, LMP2 but not MECL-1 was detected in mature proteasomes of naïve *lmp7*<sup>-/-</sup> liver, revealing the formation of LMP2/ $\beta 2$ / $\beta 5$  proteasomes, which have not been described yet (Fig. 4A). Infection induced the integration of both, LMP2 and MECL-1, into mature proteasomes in *lmp7*<sup>-/-</sup> liver, confirming the formation of LMP2/MECL-1/ $\beta 5$  proteasomes *in vivo* (Fig. 4A). LMP2/MECL-1/ $\beta 5$  proteasomes were also detected in spleens of naïve and infected *lmp7*<sup>-/-</sup> mice, demonstrating constitutive formation of mixed proteasomes in the spleen. This is in line with the constitutively high expression of LMP2 and MECL-1 commonly found in lymphoid tissues [23]. Taken together this underlines that pro $\beta 5$  does not only promote the formation of mixed LMP2/MECL-1/ $\beta 5$  *in vitro*, but also in infected or lymphoid tissue of *lmp7*<sup>-/-</sup> mice *in vivo*.

### Mixed LMP2/MECL-1/ $\beta 5$ proteasomes are the predominant proteasome type assembled following listeria-infection of *lmp7*<sup>-/-</sup> mice

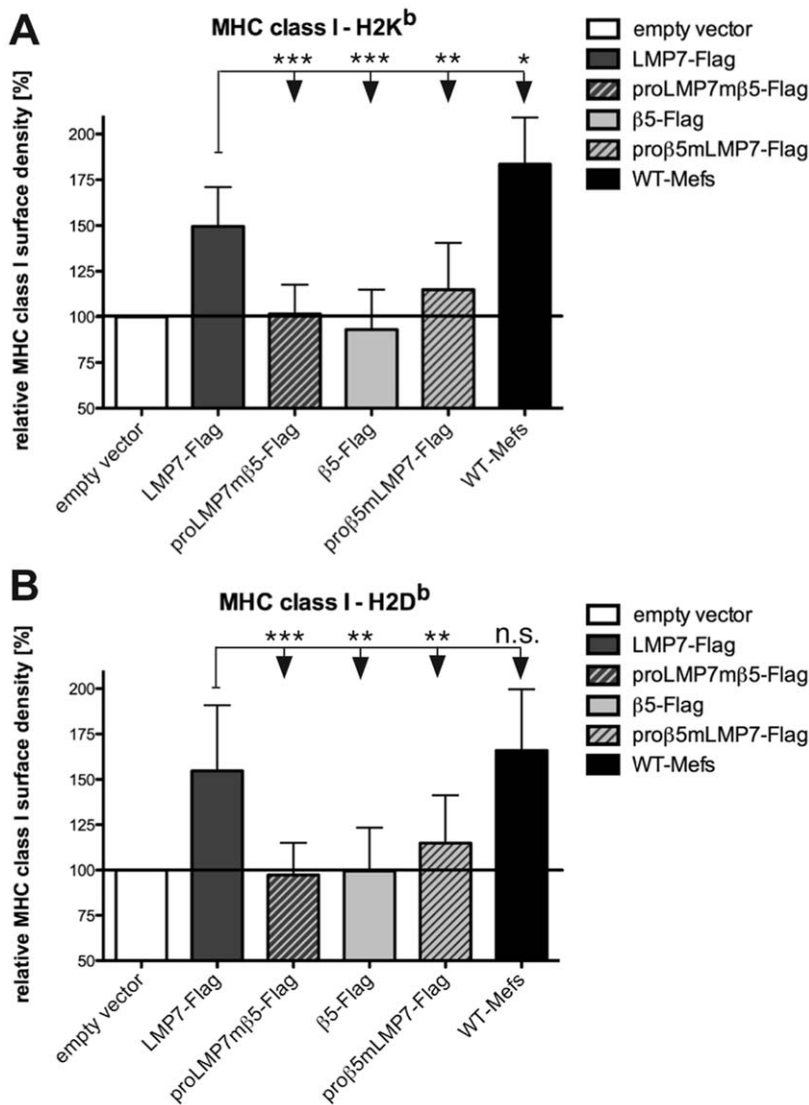
Next, we aimed to quantify the abundance of constitutive and mixed LMP2/MECL-1/ $\beta 5$  proteasomes during the course of infection in *lmp7*<sup>-/-</sup> mice. In addition, we wanted to assess the maturation efficiency of LMP2/MECL-1-containing precursors in infected *lmp7*<sup>-/-</sup> compared to WT mice. For this purpose, the abundance of mature  $\beta 1$ - $\beta 2$ -, LMP2- and MECL-1- subunits was determined by immunoblot analysis in mutant- and WT-mice (Fig. 5A). Following normalization we found that the abundance of  $\beta 1$  and  $\beta 2$  was substantially decreased at days 4 and 8 after



**Figure 2. Relative quantification of proteasome maturation in *Imp7*<sup>-/-</sup> Mefs expressing proLMP7- or pro $\beta$ 5-containing subunits.** (A) *Imp7*<sup>-/-</sup> Mefs expressing the proLMP7-containing subunits LMP7-Flag and proLMP7m $\beta$ 5-Flag or the pro $\beta$ 5-containing subunits  $\beta$ 5-Flag and pro $\beta$ 5mLMP7-Flag were either left unstimulated or cultured in the presence of 50 U/ml IFN $\gamma$  for 4 days. The abundance of POMP in the cell lysates of the four cell lines was determined by immunoblot analysis. (B) Immunoprecipitation was performed with anti-Flag M2<sup>®</sup> agarose using cell lysates of the four different *Imp7*<sup>-/-</sup> Mef lines, which were grown in the presence of 50 U/ml IFN $\gamma$  for 4 days. The abundance of GAPDH, POMP,  $\alpha$ 4 and pan-20S proteasome subunits (pan 20S subunits) was determined by immunoblot analysis of the input material (i), the supernatants (SN) and precipitates (P) following immunoprecipitation with anti-Flag M2<sup>®</sup> agarose. (C, D) The ratio mature/precursor resembles the abundance of  $\alpha$ 4 subunits (C) or pan 20S subunits (D) integrated into mature proteasomes divided by their abundance in precursor proteasomes and was calculated as follows: band intensity of subunit X in the precipitate (P) divided by the band intensity of subunit X in the supernatant (SN). Given values for each cell line are mean values  $\pm$  standard deviations of at least three independent experiments. doi:10.1371/journal.pone.0039827.g002

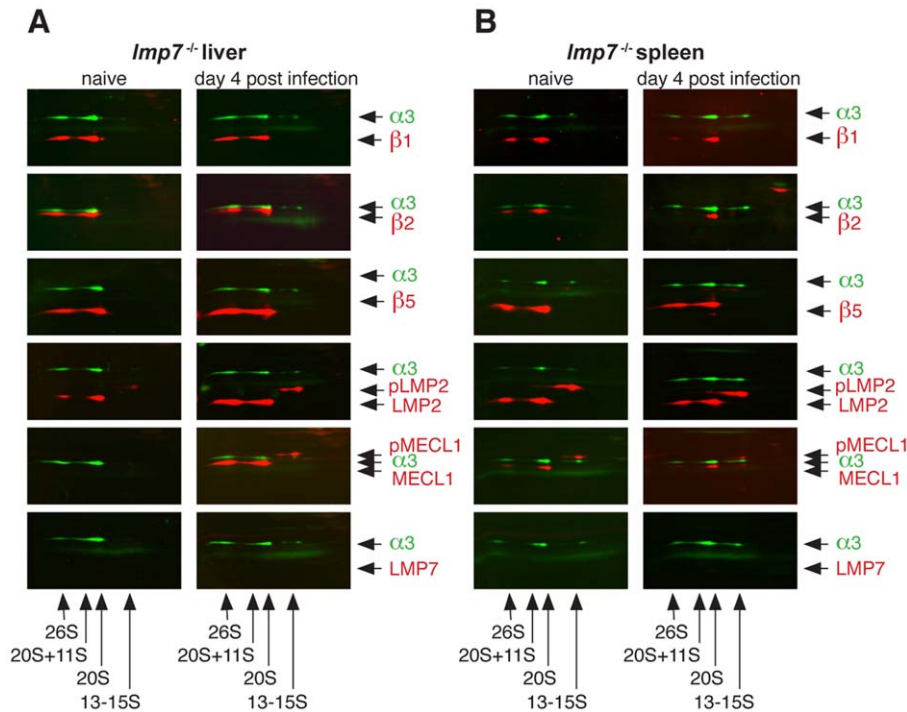
infection in both groups of mice (Fig. 5 B–C). However, this drop in constitutive subunits was more pronounced in *Imp7*<sup>-/-</sup> as compared to WT mice (Fig. 5 B–C), indicating stronger replacement of constitutive proteasomes in infected *Imp7*<sup>-/-</sup> mice. Simultaneously, the abundance of mature LMP2 and MECL-1

was increased following listeria infection of *Imp7*<sup>-/-</sup> mice (Fig. 5 D–E), which is in line with the formation of LMP2/MECL-1/ $\beta$ 5 proteasomes in infected *Imp7*<sup>-/-</sup> liver as shown in Fig. 4A. Similar results were obtained for the spleen of infected *Imp7*<sup>-/-</sup> mice, in which the abundance of  $\beta$ 1 and  $\beta$ 2 was also lower compared to



**Figure 3. Analysis of MHC class I cell surface expression in *Imp7*<sup>-/-</sup> Mefs expressing proLMP7- or pro $\beta$ 5-containing subunits.** *Imp7*<sup>-/-</sup> Mefs expressing LMP7-Flag, proLMP7m $\beta$ 5-Flag,  $\beta$ 5-Flag, pro $\beta$ 5mLMP7-Flag or cells transduced with the empty vector construct were cultured in the presence of 50 U/ml IFN $\gamma$  for 4 days. WT-Mefs stimulated with IFN $\gamma$  for 4 days were used as a positive control. The MHC class I cell surface expression of the haplotypes H-2K<sup>b</sup> (E) and H-2D<sup>b</sup> (F) on the various cell lines was determined by flow cytometry. The relative MHC class I density of the different cell lines was calculated by normalization of the median fluorescence intensity (MFI) of the indicated cell line to the MFI of *Imp7*<sup>-/-</sup> Mefs transduced with the empty vector construct. Given values are means  $\pm$  standard deviations of five independent experiments. doi:10.1371/journal.pone.0039827.g003





**Figure 4. Analysis of proteasome composition in naive and listeria-infected *Imp7*<sup>-/-</sup> mice.** Organ lysates of liver (A) and spleen (B) of naive and infected *Imp7*<sup>-/-</sup> mice were analysed by 2D two-colour fluorescent immunoblot analysis. The mice were infected i.v. with  $5 \times 10^3$  cfu *L. monocytogenes* and sacrificed 4 days post infection. Organs of three to four mice per group were pooled for the analysis. The different proteasome complexes present in the tissues were first separated by Blue Native-PAGE and subsequently by SDS-PAGE followed by two-colour fluorescent immunoblot analysis. Each membrane was stained for proteasome subunit  $\alpha 3$  (green signal) and as it is present in all early to mature complexes in proteasome assembly,  $\alpha 3$  serves as a marker for the presence and positions of 13-15S precursor proteasomes, 20S proteasomes and 20S proteasomes + 11S and 19S regulators. Further, membranes were stained for the indicated catalytic  $\beta$ -subunits (red signals) to identify, in which of the indicated proteasome complexes they were integrated. doi:10.1371/journal.pone.0039827.g004

infected WT mice, whereas the abundance of LMP2 and MECL-1 was increased by infection (Fig. S4A–E). This strongly suggests that LMP2/MECL-1/ $\beta 5$  proteasomes were the predominant proteasome subtype assembled during listeria-infection of *Imp7*<sup>-/-</sup> mice and underlines that  $\beta 5$  does not have a preference for integration into constitutive proteasomes in infection.

Still, maturation of LMP2 and MECL-1 was less efficient in *Imp7*<sup>-/-</sup> as compared to WT mice, as seen by accumulation of unprocessed LMP2 (pLMP2) and MECL-1 (pMECL-1) (Fig. 5A) and significantly lower levels of mature LMP2 and MECL-1 (Fig. 5D–E). Taken together, this suggests that although  $\beta 5$  does not seem to have a preference for integration into constitutive proteasomes, it is still less efficient in mediating proteasome maturation in infection. This is most likely due to the low chaperone activity of pro $\beta 5$ , which we identified as a limiting factor for proteasome maturation in IFN $\gamma$  stimulated *Imp7*<sup>-/-</sup> Mef5 (Fig. 2).

Noteworthy, the mRNA expression levels of all analysed subunits did not differ between both groups of mice throughout the course of infection (Fig. 5F–I; Fig. S4F–I), ruling out that the differences in protein abundance, which were observed between both groups of mice (Fig. 5A–E; Fig. S4A–E), were due to differential mRNA expression.

### Infection induces an LMP7-dependent increase in proteasome quantity

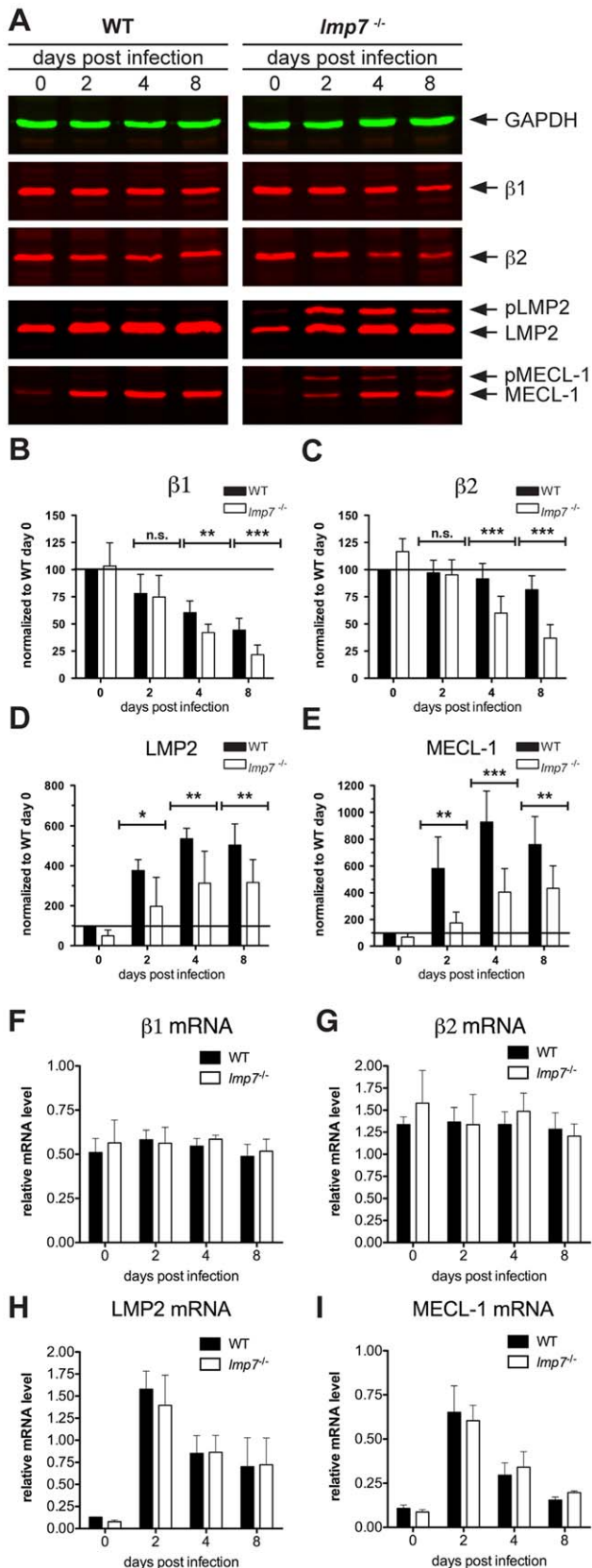
Expression of LMP7 accelerates proteasome maturation [17], but it is not clear how this function affects the proteasome system

in infection. To analyse this, we quantified the abundance of various structural proteasome subunits in listeria-infected WT and *Imp7*<sup>-/-</sup> mice during the course of infection. As a correlate of proteasome quantity, antibodies recognizing multiple subunits (pan 20S-subunits and pan  $\alpha$ -subunits; Fig. 6B, C) or antibodies specific for  $\alpha 3$  and  $\alpha 4$  were used (Fig. 6D, E). In livers of infected WT mice, we found increased abundance of all analysed proteasome subunits, which was highest at day 4 after listeria-infection (Fig. 6B–E). In contrast, proteasome subunits were not up-regulated in infected *Imp7*<sup>-/-</sup> mice. This resulted in a significantly higher abundance of all analysed subunits in WT mice throughout the course of infection (Fig. 6B–E). 2D Blue Native/SDS-PAGE confirmed that all proteasome subunits detected in WT mice (Fig. 6A), were integrated in mature proteasome complexes (Fig. 6F), demonstrating that the abundance of these subunits determined by immunoblot analysis serves as a suitable correlate for the amount of proteasomes. In conclusion, infection induced an increase in the quantity of mature proteasome complexes in WT but not *Imp7*<sup>-/-</sup> liver.

Interestingly, mRNA expression of  $\alpha 3$  and  $\alpha 4$  in the liver of WT mice was not induced by listeria-infection (Fig. 6 H, I), suggesting that the increased abundance of these subunits on protein level was caused by accelerated integration and stabilization in mature proteasome complexes of infected WT mice.

Similar results were obtained for the spleen, in which the abundance of all proteasome subunits was increased upon infection of WT, but not *Imp7*<sup>-/-</sup> mice (Fig. S5A–I). The major difference to the liver was that the abundance of all subunits was





**Figure 5. Quantification of  $\beta$ 1,  $\beta$ 2, LMP2 and MECL-1 expression at protein and mRNA level in WT and *Imp7*<sup>-/-</sup> mice during the course of listeria infection.** Both groups of mice were infected i.v. with  $5 \times 10^3$  cfu of *L. monocytogenes* and livers of three to four mice per

group were pooled for two-colour fluorescent immunoblot analysis. Naïve mice (day 0) were used as controls in both groups of mice. Each membrane was stained against GAPDH as loading control. Further, membranes were stained with antibodies specific for  $\beta$ 1,  $\beta$ 2, LMP2 and MECL-1 as indicated. Following densitometric analysis the relative protein abundance of  $\beta$ 1 (B),  $\beta$ 2 (C), LMP2 (D) and MECL-1 (E) was expressed as band intensity normalized to WT day 0, which was calculated as follows: (band intensity of proteasome subunit X at day Y/band intensity of GAPDH at day Y)/(band intensity of proteasome subunit X in WT day 0/band intensity of GAPDH in WT day 0)  $\times$  100. The given results are means  $\pm$  standard deviation of three independent infections and each sample was analysed in duplicates during immunoblot analysis (B–E). Total liver RNA of naïve and listeria-infected WT and *Imp7*<sup>-/-</sup> mice was isolated at the indicated time points and semi-quantitative qPCR analysis was performed. The relative mRNA expression of the proteasome subunits  $\beta$ 1 (F),  $\beta$ 2 (G), LMP2 (H) and MECL-1 (I) was calculated by normalization to the house keeping gene ribosomal protein subunit 9 (RPS9) using the  $\Delta\Delta$ CT method. Each value represents mean  $\pm$  standard deviation of three individual mice. Representative results of one of two independent infection experiments are shown.

doi:10.1371/journal.pone.0039827.g005

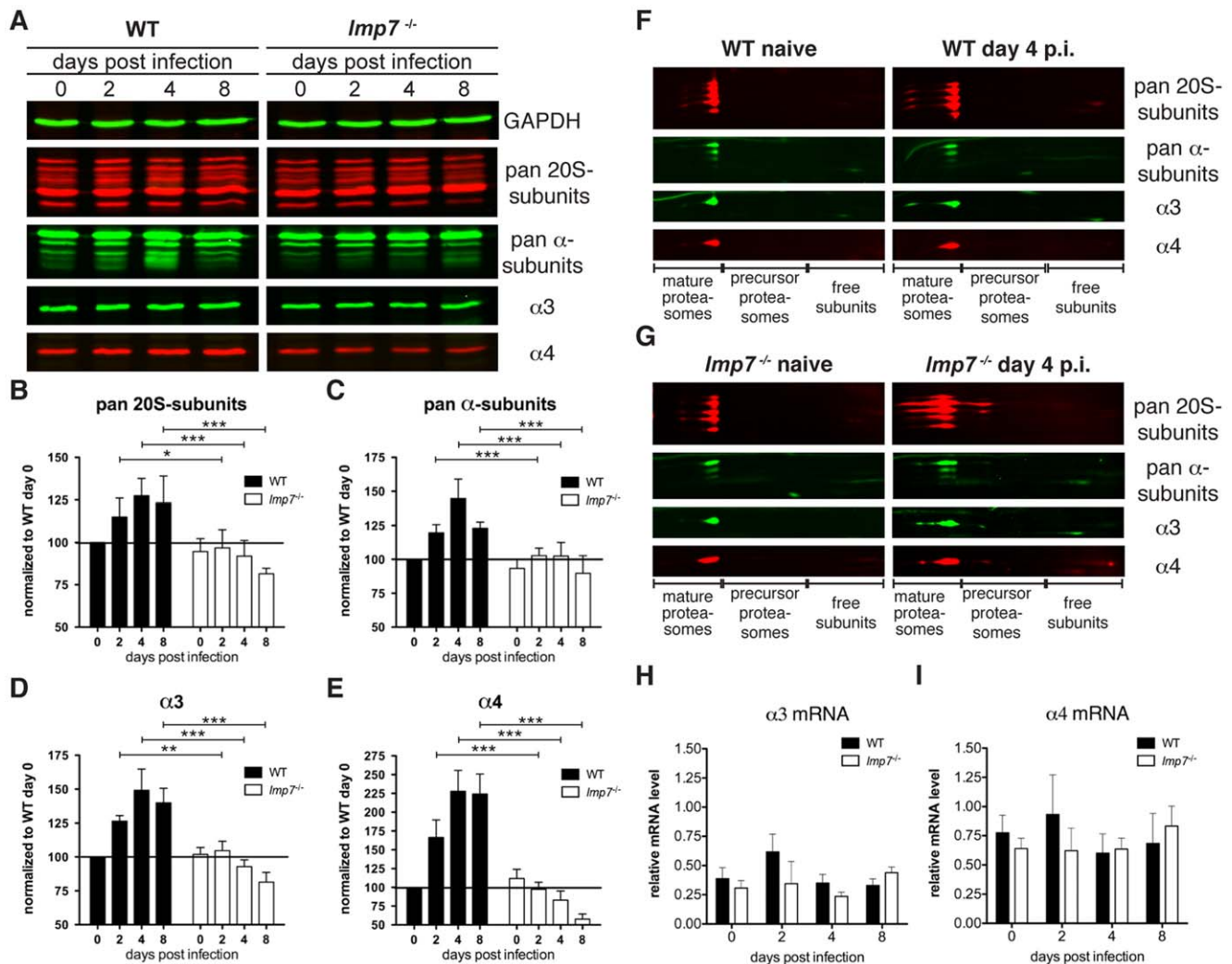
already higher in naïve WT mice as compared to *Imp7*<sup>-/-</sup> mice (Fig. S5B–E). This might be explained by the high basal expression of LMP7 in WT spleen, which is likely to promote accelerated proteasome maturation also in steady state lymphoid tissue.

To verify that the observed up-regulation of proteasome quantity is not unique to listeria-infection, the abundance of the structural proteasome subunits was further quantified in livers and spleens of WT and *Imp7*<sup>-/-</sup> mice infected with Lymphocytic choriomeningitis virus (LCMV), which is known to induce immunosubunit expression [22]. Comparable to listeria-infection, increased abundance of all analysed subunits was detected in both organs of WT, but not *Imp7*<sup>-/-</sup> mice (Fig. S6A–B). This demonstrates that the LMP7-dependent up-regulation of proteasome quantity also occurs after viral infection, suggesting that it is a general mechanism, which enhances the activity of the proteasome system in infection.

## Discussion

It has been shown that proLMP7 can mediate effective integration into various proteasome complexes, but is especially required for the maturation of LMP2/MECL-1-containing precursor proteasomes, which is known as model of cooperative immunoproteasome assembly (17, 18). In contrast, pro $\beta$ 5 has been suggested to mediate preferential formation of constitutive proteasomes due to specific interactions with  $\beta$ 1/ $\beta$ 2-containing precursor proteasomes. Accordingly, formation of mixed LMP2/MECL-1/ $\beta$ 5 proteasomes is regarded as a rare event even in the absence of LMP7 [19]. Here, we analysed the impact of LMP7 and  $\beta$ 5 on proteasome composition and maturation under inflammatory conditions and found that proLMP7- and pro $\beta$ 5-containing subunits integrated predominantly into LMP2/MECL-1-containing precursors. Thus pro $\beta$ 5 does not seem to mediate preferential integration into constitutive proteasomes under inflammatory conditions. Since this was confirmed in listeria-infected *Imp7*<sup>-/-</sup> mice, we conclude that in infection and inflammation, in which expression of LMP2 and MECL-1 is strongly induced, none of the propeptides mediates cooperative assembly of certain proteasome subtypes.

Our findings differ from reports defining the rules of cooperative assembly, which might be explained by the different approaches. While Griffin and Kingsbury et al. analysed cell lines



**Figure 6. Relative quantification of mature proteasomes in WT and *Imp7*<sup>-/-</sup> mice during the course of listeria infection.** WT and *Imp7*<sup>-/-</sup> mice were infected i.v. with  $5 \times 10^3$  cfu of *L. monocytogenes* and livers of three to four mice per group were pooled for two-colour fluorescent immunoblot analysis. Naïve mice (day 0) were used as controls in both groups of mice. Each membrane was stained against GAPDH as loading control. Further, membranes were stained with antibodies recognizing pan-20S subunits, pan- $\alpha$ -subunits,  $\alpha 3$  and  $\alpha 4$  as indicated. Representative blots of three independent experiments are shown (A). Following densitometric analysis the relative protein abundance of pan-20S subunits (B), pan- $\alpha$ -subunits (C),  $\alpha 3$  (D) and  $\alpha 4$  (E) was expressed as band intensities normalized to WT day 0, which was calculated as follows: (band intensity of proteasome subunit X at day Y)/(band intensity of GAPDH at day Y)/(band intensity of proteasome subunit X in WT day 0)/(band intensity of GAPDH in WT day 0)  $\times$  100. The given results are means  $\pm$  standard deviation of three independent infection experiments and each sample was analysed in duplicates during immunoblot analysis (B–E). To analyse in which proteasome complexes the analysed structural subunits are integrated, 2D two-colour fluorescent immunoblot analysis was performed on liver lysates of naïve and infected WT (F) and *Imp7*<sup>-/-</sup> mice (G). Brackets mark the areas, in which the different proteasome fractions are found. qPCR analysis on total liver cDNA was performed to assess the mRNA expression of  $\alpha 3$  (H) and  $\alpha 4$  (I) during the course of listeria infection in WT and *Imp7*<sup>-/-</sup> mice. The relative mRNA expression of the proteasome subunits was calculated by normalization to the housekeeping gene RPS9 using the  $\Delta\Delta CT$  method. Each value represents mean  $\pm$  standard deviation of three individual mice. doi:10.1371/journal.pone.0039827.g006

in the steady state with fixed expression of constitutive and immunosubunits [18,19], we used inducible systems, in which expression of LMP2 and MECL1 is strongly up-regulated by IFN $\gamma$  stimulation or infection. The strong induction of immunosubunits might have shifted the balance considerably towards formation of mixed LMP2/ MECL1/ $\beta 5$  proteasomes as compared to studies using fixed subunit expression. This is in line with work by Früh et al, who similar to our study employed inducible systems for the expression of immunosubunits and demonstrated that the expression level substantially influences the integration of immunosubunits. Hence, they suggested that integration of constitutive or immunosubunits is regulated by competition at the protein level

[24]. In addition, they describe that integration of LMP2 and LMP7 can occur independent of each other, consequently resulting in any combination of  $\beta 1$  or LMP2 with  $\beta 5$  or LMP7, which is also in conflict with the rules of cooperative assembly [24]. In accordance, we found that  $\beta 5$  has a high capacity to integrate into mixed proteasomes with LMP2 and MECL1, if competition with LMP7 is abrogated in mutant cell lines or mice, supporting that integration of constitutive or immunosubunits is rather regulated by competition at protein level than by cooperative assembly.

A further explanation for the conflicting data might be the different origins of the cell lines used to study the impact of

immunoglobulin on proteasome composition. We and Fröh et al. used fibroblasts [24], which display high expression of constitutive subunits in the steady state, but strongly induced expression of immunoglobulins upon IFN $\gamma$  stimulation. In contrast, the data suggesting cooperative assembly were derived from T2 cells, which are of lymphoid origin and presumably express low levels of constitutive subunits [18,19]. However, the expression level of  $\beta 5$  has not been defined in T2 cells and thus low formation of mixed LMP2/MECL-1/ $\beta 5$  proteasomes might be a result of restricted availability of  $\beta 5$  in this lymphoid cell line. In line with this, we found that formation of mixed LMP2/MECL-1/ $\beta 5$  proteasomes is less efficient in the spleen of *lmp7*<sup>-/-</sup> mice, which mostly contains lymphoid cell types, as compared to the liver, in which the tissue largely consists of non-lymphoid cells.

It has been proposed that proLMP7 is required for accelerated proteasome maturation mediated by LMP7, due to its high affinity to the proteasome maturation factor POMP [17], but direct experimental evidence was missing. Moreover it has been described that the catalytic activity of  $\beta$ -subunits is crucial to complete proteasome assembly [6,9] and that carboxy-terminal domains of some  $\beta$ -subunits can have stabilizing effects, which facilitate proteasome maturation [25,26]. Accordingly, each of these factors could contribute to accelerated proteasome maturation mediated by LMP7. Here we found that the fusion protein proLMP7m $\beta 5$  is equally efficient in mediating proteasome maturation as compared to full-length LMP7. Hence the proteolytic activity of  $\beta 5$  is not limiting for proteasome maturation and we can rule out that the specific catalytic activity of LMP7 is required to accelerate proteasome assembly. Moreover the proLMP7m $\beta 5$  fusion protein reveals that the carboxy-terminus of LMP7 is not required for accelerated proteasome maturation. These findings clearly identify proLMP7 as critical pacemaker, which drives accelerated proteasome maturation following induction of LMP7.

In yeast it has been shown that the propeptide of the  $\beta 5$  homologue Doa3 can support proteasome assembly, if it is expressed *in trans*, suggesting that it serves as an intra-molecular chaperone in the full-length protein [9]. In mammalian cells, we found that subunits containing proLMP7 have a 3 to 4-fold higher capacity to promote proteasome maturation in comparison to subunits containing pro $\beta 5$ , revealing that proLMP7 has a substantially higher chaperone activity as compared to pro $\beta 5$ . With regard to the regulation of proteasome composition, the high chaperone activity of proLMP7 constitutes a major advantage and is consistent with the fact that  $\beta 5$  is rapidly replaced, as soon as LMP7 is expressed [22,23,24]. This also explains, why mixed proteasomes with LMP2/ $\beta 2$ /LMP7 or  $\beta 1/\beta 2$ /LMP7 stoichiometry can even be found during low-level expression of LMP7 in the steady state. Such mixed proteasomes were recently identified in various human tissues and cancer-derived cell lines and have been shown to be crucial for the MHC class I restricted presentation of specific tumour-derived peptides [20]. This clearly shows that the formation of these mixed proteasomes is not simply a bystander product of “unbalanced” expression of constitutive or immunoglobulins, but that the chaperone function of proLMP7 is a relevant biological function.

In contrast, the low chaperone activity of pro $\beta 5$  is a limiting factor for proteasome assembly under inflammatory conditions, resulting in accumulation of precursor proteasomes, if LMP7 is deleted. Moreover, the low chaperone activity of pro $\beta 5$  is in line with the low abundance of LMP2/MECL-1/ $\beta 5$  proteasomes, when LMP7 is present. Still, we were able to detect LMP2/MECL-1/ $\beta 5$  proteasomes in WT-Mefs, however only, if the capacity of  $\beta 5$  to compete with LMP7 was increased by exogenous

over-expression. Although this situation might be artificial, this finding is still mechanistically relevant, since it further underlines that integration of LMP7 and  $\beta 5$  is substantially regulated by their expression level and competition at the protein level. However, in this competition LMP7 has a substantial advantage due to its propeptide, which displays a higher affinity to POMP [17] and a superior chaperone activity as compared to pro $\beta 5$ . This does not only explain the rapid formation of immunoproteasomes in infection and inflammation, but is also consistent with the fact that LMP2/MECL-1/ $\beta 5$  proteasomes are rarely found in a normal wild-type situation.

Noteworthy, the proteasome content in *lmp7*<sup>-/-</sup> mice remained constant throughout the course of infection. This is in line with the low chaperone activity of pro $\beta 5$  shown here and the approximately 4-fold lower rate of proteasome assembly mediated by  $\beta 5$  described by others [17]. It suggests that the physiological role of  $\beta 5$  is to provide a constant low-level turnover of proteasomes in the steady state. In this respect, the low chaperone activity of pro $\beta 5$  is reasonable, as it appears to be adjusted to the long half-life, which has been reported for constitutive proteasomes [17].

Infection with *L. monocytogenes* or *Lymphocytic choriomeningitis virus* induces rapid replacement of constitutive by immunoproteasomes [22,23] and accelerated proteasome assembly mediated by LMP7 supports this process [17]. However, beyond this mere shift to immunoproteasome formation, we found that induction of LMP7 leads to increased total proteasome quantity within the infected tissue. Hence, we identified a novel role of LMP7 in regulating the proteasome system by enhancing the output of active proteasome complexes. Still, the possibility remains that increased proteasome quantity of infected tissues in WT mice is a consequence of higher influx of immune cells as compared to *lmp7*<sup>-/-</sup> mice. This however is unlikely, since *lmp7*<sup>-/-</sup> mice develop normal, have unaltered numbers of T and B cells [12] and generate similar frequencies of listeria-specific CD8<sup>+</sup> T cells as compared to WT mice [23].

Expression of LMP7 has been shown to promote inflammatory responses, which is in part due to improved NF- $\kappa$ B activation by LMP7-containing proteasomes [13,14,15]. Further, expression of LMP7 has been shown to facilitate degradation of oxidatively damaged proteins [16] and MHC class I antigen presentation [12]. So far, these functions of LMP7 have been exclusively associated with its proteolytic activity. Here, we show that optimal MHC class I antigen presentation was equally dependent on efficient maturation of proteasomes mediated by proLMP7. Thus it is tempting to speculate that the increase in proteasome quantity mediated by proLMP7, does not only improve MHC class I presentation, but might also be relevant for NF- $\kappa$ B activation and resistance to oxidative stress. Indeed, an increase in proteasome quantity mediated by the NFR2/KEAP-1 signalling pathway or the transcription factor NCF11 is known to enhance the resistance towards oxidative stress [27,28]. At the same time, oxidative stress has been shown to induce LMP7 expression [29]. Thus it is likely that the LMP7-mediated increase in proteasome quantity protects against oxidative stress, either by itself or synergistically with other factors like e.g. NRF2/KEAP-1 and NCF11.

In summary, we describe a novel pathway of LMP7-mediated proteasome regulation, which relies on increased output of active proteasome complexes during infection and probably other inflammatory conditions. Moreover, we could identify proLMP7 as the critical pacemaker driving accelerated maturation of proteasomes in this context. Although it is likely that this mechanism contributes to the defence against infections, its precise impact on distinct biological functions such as MHC class

I presentation, NF- $\kappa$ B activation and oxidative stress responses, remains a matter of future studies.

## Materials and Methods

### Experimental animals

All mice were kept under specific pathogen-free conditions (SPF). C57Bl/6N (WT) mice were obtained from Charles River (Berlin, Germany) and *lmp7*<sup>-/-</sup> mice were bred at the Max Planck Institute for Infection Biology (Berlin, Germany). Mice were infected intravenously (i.v.) with  $5 \times 10^3$  colony forming units (cfu) of *Listeria monocytogenes* strain EGD or  $10^6$  pfu of *Lymphocytic choriomeningitis virus* strain WE (LCMV WE). All experiments were performed in strict accordance with German Animal Protection Law and granted by the ethical committee of the "Landesamt für Gesundheit und Soziales Berlin" (permission numbers G0165/04 and T0144/05) in Berlin, Germany.

### Cell cultures

Phoenix E cells, for ecotropic packaging of retroviral vectors (ATCC product # SD 3444), were kept in D10 Medium [Dulbeccos Modified Eagle Medium (Gibco) with 10% fetal calf serum (FCS), 1 mM L-glutamine, 1 mM sodium-pyruvate, 1  $\times$  penicillin/streptomycin solution (Gibco), 50  $\mu$ M  $\beta$ -mercaptoethanol]. Primary murine embryonic fibroblasts (MEFs) were isolated from 13- to 14-day-old embryos of WT or *lmp7*<sup>-/-</sup> mice. Spontaneous immortalization of MEFs was achieved by frequent passaging.

### Preparation of protein lysates

Frozen organs or cells were homogenized with a pestle. The homogenates were resuspended in 1 volume of 1  $\times$  NativePAGE™ Sample Buffer (Invitrogen) complemented with 0.5% Igepal, 0.2 mM sodium vanadate, 5 mM sodium fluoride, 1 mM PMSF, 1 mM Pefabloc® SC (Roche Applied Science), 1  $\times$  complete protease inhibitor cocktail (Roche Applied Science) and subjected to three freeze-thaw cycles. The debris was sedimented at 13,000 rpm for 30 min at 4°C. Protein concentrations were determined with Protein-Assay solution (Bio-Rad) according to manufacturer's instructions.

### Two-colour fluorescent immunoblot analysis

Twenty-five to fifty  $\mu$ g total protein diluted in 1  $\times$  Laemmli buffer (50 mM TrisHCl pH6.8, 100 mM dithiothreitol, 2% (w/v) sodium dodecyl sulfate (SDS), 10% (v/v) glycerol, 0.1% (w/v) Bromophenol Blue) per lane were loaded on tris-glycine buffered 15% (w/v) SDS-PAGE gels and run in tris-glycine buffer (25 mM Tris, 250 mM Glycine, 0.1% (w/v) SDS). Following SDS-PAGE, proteins were transferred to Immobilon-FL PVDF membrane. Membranes were blocked in Odyssey Blocking Reagent (Licor Bioscience) and stained with rabbit or chicken polyclonal antibodies against proteasome subunits or POMP as well as mouse monoclonal antibodies against GAPDH. This was followed by staining with the respective secondary antibodies goat anti-rabbit IgG AlexaFluor680 (Molecular Probes), goat anti-chicken IgG IrDye700 (Rockland) or goat anti-mouse IgG IrDye800 (Rockland). For evaluation, membranes were scanned with the Odyssey® Infrared Imaging system (Licor Biosciences). Densitometric analysis was performed with the Odyssey® Image Analyser Software Version 1.2 (Licor Biosciences). Band intensities were first normalized to the signal of the loading control GAPDH and subsequently to the signal of naïve WT mice (WT day 0), which was used as an internal standard on each gel.

Polyclonal rabbit antisera against  $\beta$ 5, LMP2 as well as polyclonal chicken antibodies against  $\beta$ 2 and POMP were obtained from Abcam. Rabbit polyclonal antibodies specific for MECL-1 were obtained from Biomol. The mouse monoclonal antibodies against  $\alpha$ -subunits (MCP231),  $\alpha$ 3 (clone MCP257) and GAPDH (clone 6C5) were obtained from Calbiochem. Rabbit polyclonal antibodies against  $\beta$ 1, LMP7, 20S proteasome subunits (MP3),  $\alpha$ 4, PA28 $\alpha$  and 19S subunit S4 were kindly provided by the Institute for Biochemistry, Charité, Berlin.

### 2D Two-colour fluorescent immunoblot analysis

Organ lysates (50  $\mu$ g per lane) supplemented with 0.125% (v/v) NativePAGE™ G-250 Sample Additive (Invitrogen) were loaded on NativePAGE™ Novex 4–16% Bis-Tris Gels (Invitrogen) and gels were run according to manufacturers instructions. Gels were sliced into single lanes and equilibrated in 2  $\times$  Laemmli buffer for 30 min. Slices were placed in preparative slots of tris-glycine-buffered 15% (w/v) SDS-PAGE gels and run in tris-glycine buffer, which was followed by two-colour fluorescent immunoblot analysis (see above).

### Semiquantitative real-time RT-PCR (qPCR)

Organs were homogenized in TRIzol® Reagent (Invitrogen) and purification of RNA was performed according to manufacturer's instructions. The concentration and quality of the RNA was determined using a 2100 Bioanalyzer (Agilent Technologies). For cDNA synthesis, 2–4  $\mu$ g total RNA were transcribed using random hexamer primers and SuperScript™ II Reverse Transcriptase (Invitrogen) according to manufacturer's instructions. qPCR reactions contained 1  $\times$  SYBR Green mix (Applied Biosystems), 10 pmol forward-primer, 10 pmol reverse-primer and 5  $\mu$ l cDNA template diluted 1:20 in UltraPure Water (Millipore). The amplification was performed with an ABI Prism 7900H detection system (Applied Biosystems) and data were evaluated with the SDS2.2.2 Software (Applied Biosystems). The expression of ribosomal protein subunit 9 (RPS9) was used as internal standard. The relative expression was calculated as fold difference to RSP9 using the  $\Delta\Delta$ CT method. Primer sequences are listed in Table S1.

### Generation of retrovirally transduced MEFs

The coding sequences of pro $\beta$ 5, proLMP7,  $\beta$ 5, m $\beta$ 5, LMP7 and mLMP7 with a carboxy-terminal Flag-tag fusion were amplified from a murine liver cDNA by nested PCR. The  $\beta$ 5- and LMP7-Flag inserts were amplified using the primer pairs  $\beta$ 5-start-for/ $\beta$ 5-Flag-rev or LMP7-start-for/LMP7-Flag-rev. The pro $\beta$ 5mLMP7 or proLMP7m $\beta$ 5 were generated by blunt-end ligation of the respective fragments using T4 Ligase (Fermentas) at 16°C overnight. The fragments were amplified using the following primer pairs:  $\beta$ 5-start-for/pro $\beta$ 5-rev for pro $\beta$ 5, LMP7-start-for/proLMP7-rev for proLMP7, m $\beta$ 5-for/ $\beta$ 5-Flag-rev for m $\beta$ 5 and LMP7-start-for/mLMP7-rev for mLMP7. All inserts were then amplified with the attB1- and attB2-adapter primers introducing the full attachment sites for Gateway recombination. The IRES-eGFP coding sequence was amplified with the primers IRES-eGFP-for/IRES-eGFP-rev containing the attB2/attB3 attachment sites and the EF1 $\alpha$ -Promotor was amplified with primers EF1 $\alpha$ -for-B4/EF1 $\alpha$ -rev-B1 containing the attB4/attB1 attachment sites. Primer sequences are listed in Table S1. The proteasome subunit inserts were first subcloned into the entry vector pDONR™P2R-P3 (Invitrogen), the IRES-eGFP insert into pDONR™P2R-P3 (Invitrogen) and the EF1 $\alpha$ -promotor into pDONR™P4-P1R using the BP-recombination reaction according to the MultiSite Gateway® Three-Fragment Vector Construction Kit Manual.

Final expression vectors were generated by a LR-recombination reaction between pDest-Super, pDONR<sup>TM</sup>P4-P1R-EF-1 $\alpha$ , the pDONR<sup>TM</sup>221 entry vectors containing the proteasome-subunit inserts and pDONR<sup>TM</sup>P2R-P3-IRES-eGFP according to manufacturer's instructions resulting in the expression vectors pEX-EF-1 $\alpha$ - $\beta$ 5-Flag-IRES-eGFP, pEX-EF-1 $\alpha$ -LMP7-Flag-IRES-eGFP, pEX-EF-1 $\alpha$ -proLMP7m $\beta$ 5-Flag-IRES-eGFP and pEX-EF-1 $\alpha$ -pro $\beta$ 5mLMP7-Flag-IRES-eGFP, respectively. The expression vectors were packed into ecotropic retroviral particles by transient transfection of Phoenix E cells using CaPO<sub>4</sub> precipitation. Twenty-four hours after transfection the medium was exchanged and the supernatants containing retroviral particles were harvested after 24 and 48 h. For retroviral transduction 2 ml of the supernatants were added per well to Mefs seeded in 6-well plates with 50% confluency. The supernatants were replaced by fresh supernatant 24 h later and then exchanged against D10 medium supplemented with 10  $\mu$ g/ml puromycin (Sigma-Aldrich) another 24 h later for selection. After 2–4 weeks, eGFP-expressing cells were repeatedly sorted with a DIVA cell sorter (BD Biosciences) until a purity of >98% of eGFP high-expressing Mefs was achieved.

### Co-immunoprecipitation

Retrovirally transduced *lmp7*<sup>-/-</sup> Mefs expressing  $\beta$ 5-Flag, LMP7-Flag, proLMP7m $\beta$ 5-Flag and pro $\beta$ 5mLMP7-Flag or containing an empty eGFP-expression vector were either left untreated or stimulated with 100 U/ml IFN $\gamma$  (Strathmann Biotec). After 4 days the cells were harvested and cell-lysates were prepared according to the instruction described above. Cell-lysates (600  $\mu$ g total protein) were diluted in 300  $\mu$ l lysis buffer (50 mM TrisHCl pH 7.4, 150 mM NaCl, 1mM EDTA, 0,5% Igepal) and mixed with 80  $\mu$ l Anti-Flag<sup>®</sup> M2 Affinity Gel (Sigma Aldrich) equilibrated in TBS (25 mM TrisHCl pH 7.4, 50 mM NaCl). Samples were shaken head over tail at 4°C over night and then the gel matrix was sedimented at 8,000  $\times$  *g* for 1 min. The supernatant was saved and mixed with 1 volume 2 $\times$  Laemmli buffer. The gel matrix was washed thrice with 0.5 ml TBS and subsequently resuspended in 300  $\mu$ l lysis buffer plus 300  $\mu$ l 2 $\times$  Laemmli buffer. The supernatants and the precipitated proteins (pull down) were denaturated at 95°C for 5 min and 25  $\mu$ l/lane, resembling 25  $\mu$ g of the initial total protein input, were loaded on 15% SDS-PAGE gels.

### Measurement of MHC class I cell surface expression

*lmp7*<sup>-/-</sup> Mefs expressing  $\beta$ 5-Flag, LMP7-Flag, proLMP7m $\beta$ 5-Flag and pro $\beta$ 5mLMP7-Flag or the empty eGFP-expression vector were grown in the presence of 50 U/ml IFN $\gamma$  for 4 days. Cells (1 $\times$ 10<sup>6</sup>) were stained in FACS-buffer (PBS, 0.1% BSA, 2 mM NaN<sub>3</sub>) containing the haplotype-specific antibodies H-2K<sup>b</sup>-APC (clone AF88.5.5.3, BD Biosciences) or H-2D<sup>b</sup>-Cy5 (clone HB27) at 4°C for 30 min. Cells were analysed on a FACS-Canto (BD Biosciences). The relative MHC class I surface density of H-2K<sup>b</sup> and H-2D<sup>b</sup> was determined as median fluorescence intensity (MFI).

### References

1. Rock KL, Gramm C, Rothstein L, Clark K, Stein R, et al. (1994) Inhibitors of the proteasome block the degradation of most cell proteins and the generation of peptides presented on MHC class I molecules. *Cell* 78: 761–771.
2. Groll M, Ditzel L, Lowe J, Stock D, Bochtler M, et al. (1997) Structure of 20S proteasome from yeast at 2.4 Å resolution. *Nature* 386: 463–471.
3. Hirano Y, Hayashi H, Iemura S, Hendil KB, Niwa S, et al. (2006) Cooperation of Multiple Chaperones Required for the Assembly of Mammalian 20S Proteasomes. *MolCell* 24: 977–984.

### Statistics

All values presented in figures throughout the manuscript are means  $\pm$  standard deviation. The number of replicates for each experiment is given in the figure legend. Significance was determined by unpaired, two-tailed *t* test and the indicated significance levels are n.s. – not significant, \* P<0.05, \*\* P<0.01, \*\*\* P<0.001.

### Supporting Information

**Figure S1 Co-immunoprecipitation analysis in *lmp7*<sup>-/-</sup> Mefs transduced with the empty vector construct and in WT-MEFs overexpressing  $\beta$ 5.**

(PDF)

**Figure S2 Identification of mature proteasome and precursor complexes by 2D two-colour fluorescent immunoblot analysis.**

(PDF)

**Figure S3 Analysis of proteasome composition in naive and listeria-infected WT mice.**

(PDF)

**Figure S4 Quantifying the expression of  $\beta$ 1,  $\beta$ 2, LMP2 and MECL-1 at protein and mRNA level in WT and *lmp7*<sup>-/-</sup> mice during the course of listeria infection.**

(PDF)

**Figure S5 Relative Quantification of mature proteasomes in WT and *lmp7*<sup>-/-</sup> mice during the course of listeria infection.**

(PDF)

**Figure S6 Relative quantification of proteasome abundance in WT and *lmp7*<sup>-/-</sup> mice during the course of LCMV infection.**

(PDF)

**Table S1 Primer sequences used for qPCR and molecular cloning.**

(PDF)

### Acknowledgments

We thank Dagmar Oberbeck-Müller for excellent technical assistance and Prof. Hansjörg Schild (University of Mainz, Germany) for kindly providing us *lmp7*<sup>-/-</sup> mice and Marie Louise Grossmann for editing of the manuscript. Further, we thank Dr. Constantin Urban, MPIIB (Berlin) for support with molecular cloning strategies.

### Author Contributions

Conceived and designed the experiments: TJ AV UK SHEK US. Performed the experiments: TJ NS DE PK. Analyzed the data: TJ US. Contributed reagents/materials/analysis tools: DE AV UK SHEK US. Wrote the paper: TJ SHEK US.

7. Witt E, Zantopf D, Schmidt M, Kraft R, Kloetzel PM, et al. (2000) Characterisation of the newly identified human Ump1 homologue POMP and analysis of LMP7(beta 5i) incorporation into 20 S proteasomes. *JMolBiol* 301: 1–9.
8. Schmidt M, Zantopf D, Kraft R, Kostka S, Preissner R, et al. (1999) Sequence information within proteasomal prosequences mediates efficient integration of beta-subunits into the 20 S proteasome complex. *JMolBiol* 288: 117–128.
9. Chen P, Hochstrasser M (1996) Autocatalytic subunit processing couples active site formation in the 20S proteasome to completion of assembly. *Cell* 86: 961–972.
10. Dick TP, Nussbaum AK, Deeg M, Heinemeyer W, Groll M, et al. (1998) Contribution of proteasomal beta-subunits to the cleavage of peptide substrates analyzed with yeast mutants. *J Biol Chem* 273: 25637–25646.
11. Groettrup M, Kirk CJ, Basler M (2010) Proteasomes in immune cells: more than peptide producers? *Nat Rev Immunol* 10: 73–78.
12. Fehling HJ, Swat W, Laplace C, Kuhn R, Rajewsky K, et al. (1994) MHC class I expression in mice lacking the proteasome subunit LMP-7. *Science* 265: 1234–1237.
13. Muchamuel T, Basler M, Aujay MA, Suzuki E, Kalim KW, et al. (2009) A selective inhibitor of the immunoproteasome subunit LMP7 blocks cytokine production and attenuates progression of experimental arthritis. *Nat Med*.
14. Schmidt N, Gonzalez E, Visekruna A, Kuhl AA, Loddenkemper C, et al. (2010) Targeting the proteasome: partial inhibition of the proteasome by bortezomib or deletion of the immunosubunit LMP7 attenuates experimental colitis. *Gut* 59: 896–906.
15. Visekruna A, Joeris T, Seidel D, Kroesen A, Loddenkemper C, et al. (2006) Proteasome-mediated degradation of I kappa B alpha and processing of p105 in Crohn disease and ulcerative colitis. *JClinInvest* 116: 3195–3203.
16. Seifert U, Bialy LP, Ebstein F, Bech-Otschir D, Voigt A, et al. (2010) Immunoproteasomes preserve protein homeostasis upon interferon-induced oxidative stress. *Cell* 142: 613–624.
17. Heink S, Ludwig D, Kloetzel PM, Kruger E (2005) IFN-gamma-induced immune adaptation of the proteasome system is an accelerated and transient response. *ProcNatAcadSciUSA* 102: 9241–9246.
18. Griffin TA, Nandi D, Cruz M, Fehling HJ, Kaer LV, et al. (1998) Immunoproteasome assembly: cooperative incorporation of interferon gamma (IFN-gamma)-inducible subunits. *JExpMed* 187: 97–104.
19. Kingsbury DJ, Griffin TA, Colbert RA (2000) Novel propeptide function in 20 S proteasome assembly influences beta subunit composition. *JBiolChem* 275: 24156–24162.
20. Guillaume B, Chapiro J, Stroobant V, Colau D, Van Holle B, et al. (2010) Two abundant proteasome subtypes that uniquely process some antigens presented by HLA class I molecules. *Proc Natl Acad Sci U S A*.
21. Visekruna A, Joeris T, Schmidt N, Lawrenz M, Ritz JP, et al. (2009) Comparative expression analysis and characterization of 20S proteasomes in human intestinal tissues: The proteasome pattern as diagnostic tool for IBD patients. *Inflamm Bowel Dis* 15: 526–533.
22. Khan S, van den BM, Schwarz K, de Giuli R, Diener PA, et al. (2001) Immunoproteasomes largely replace constitutive proteasomes during an antiviral and antibacterial immune response in the liver. *JImmunol* 167: 6859–6868.
23. Strehl B, Joeris T, Rieger M, Visekruna A, Textoris-Taube K, et al. (2006) Immunoproteasomes Are Essential for Clearance of *Listeria monocytogenes* in Nonlymphoid Tissues but Not for Induction of Bacteria-Specific CD8+ T Cells. *JImmunol* 177: 6238–6244.
24. Fruh K, Gossen M, Wang K, Bujard H, Peterson PA, et al. (1994) Displacement of housekeeping proteasome subunits by MHC-encoded LMPs: a newly discovered mechanism for modulating the multicatalytic proteinase complex. *EMBO J* 13: 3236–3244.
25. Li X, Kusmierczyk AR, Wong P, Emili A, Hochstrasser M (2007) beta-Subunit appendages promote 20S proteasome assembly by overcoming an Ump1-dependent checkpoint. *EMBO J*.
26. Ramos PC, Marques AJ, London MK, Dohmen RJ (2004) Role of C-terminal extensions of subunits beta2 and beta7 in assembly and activity of eukaryotic proteasomes. *JBiolChem* 279: 14323–14330.
27. Kwak MK, Wakabayashi N, Greenlaw JL, Yamamoto M, Kensler TW (2003) Antioxidants enhance mammalian proteasome expression through the Kcap1-Nrf2 signaling pathway. *Mol Cell Biol* 23: 8786–8794.
28. Steffen J, Secger M, Koch A, Kruger E (2010) Proteasomal degradation is transcriptionally controlled by TCF11 via an ERAD-dependent feedback loop. *Mol Cell* 40: 147–158.
29. Kotamraju S, Matalon S, Matsunaga T, Shang T, Hickman-Davis JM, et al. (2006) Upregulation of immunoproteasomes by nitric oxide: potential antioxidative mechanism in endothelial cells. *Free RadicBiolMed* 40: 1034–1044.